

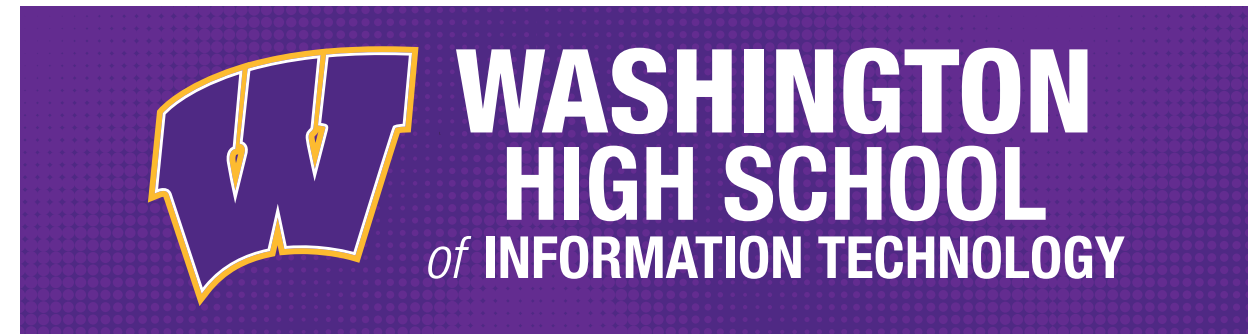
In accordance with the provisions of Section 320-21 (11) and (12) of the Milwaukee Code of Ordinances, the Milwaukee Historic Preservation Commission has issued a certificate of appropriateness for the work listed on these pages. The work was found to be consistent with preservation guidelines. All work must be done in a craftsman-like manner, and must be completed within one year of the date this certificate was issued. Staff must approve any changes or additions to this certificate before work begins. Work that is not completed in accordance with this certificate may be subject to correction orders or citations.

APPROVED

By Tim Askin - Milwaukee HPC at 12:04 pm, Jun 26, 2023



**MILWAUKEE
PUBLIC SCHOOLS**



VJS / MPS 035 - Washington High School

2525 N Sherman Blvd, Milwaukee, WI 53210

MPS 035_Washington_HS_Monument 1 (2)

Date: 06-19-23



SIGNS

4085 North 128th Street
Brookfield, WI 53005
p. 262-781-1500
www.LembergElectric.com

CONCEPTUAL DRAWING

Monument Sign Specifications

One (1) Typical Monument Sign with New Sign Cabinet and Electronic Message Center (EMC) / New Masonry Base.

Illuminated / Double Sided / 21 Sq'

Main Sign Cabinet: Photocell for Automatic On & Off Lighting Control

(A) New Sign Cabinet

24" +/- deep fabricated aluminum sign cabinet with 1/8" routed aluminum faces, decorated with translucent vinyl graphics (and or digitally printed). Internal white LED illumination (Standard White).

(B) Electronic Message Center

Watchfire 16mm Full Color (RBG) LED Message Center. 2' x 5' viewable area. Note: Enclosure size is non-standard, to be custom fabricated. ACCESS PANEL IN TWO PARTS (2' H TOP / 6"H BOTTOM), TO ALLOW EMC SERVICE ONCE LB CONDUIT BODY IS INSTALLED - SEE NEXT SHEET

(C) Reveal

Fabricated aluminum reveal, 3"H x 68"W x 14"D

(D) Drip Cap

Fabricated aluminum brick cap with bent drip edge. To fit over existing masonry base (with holes to fit over existing poles) 6'- 3" x 2'-1" x 1.5"H.

(E) Masonry Base

Typical Masonry Base BY OTHER.

(F) Center Pole

4" x 4" x 1/4" steel center pole, square / sign cabinet and EMC saddle mount pole. Pole is set in footing with masonry base constructed around it BY OTHER. Lemberg to coordinate setting of pole.

(G) Concrete Footing

6' 2" x 2' x 4' deep typical concrete footing / by other

(H) Antenna Location

4G Wireless with Watchfire Life of Sign Cellular Data Plan. Receiver shall be hidden and mounted on the inside of the sign enclosure, to reduce vandalism.

General Notes

All signage components: cabinet, retainers, reveal, and drip cap should be painted black.

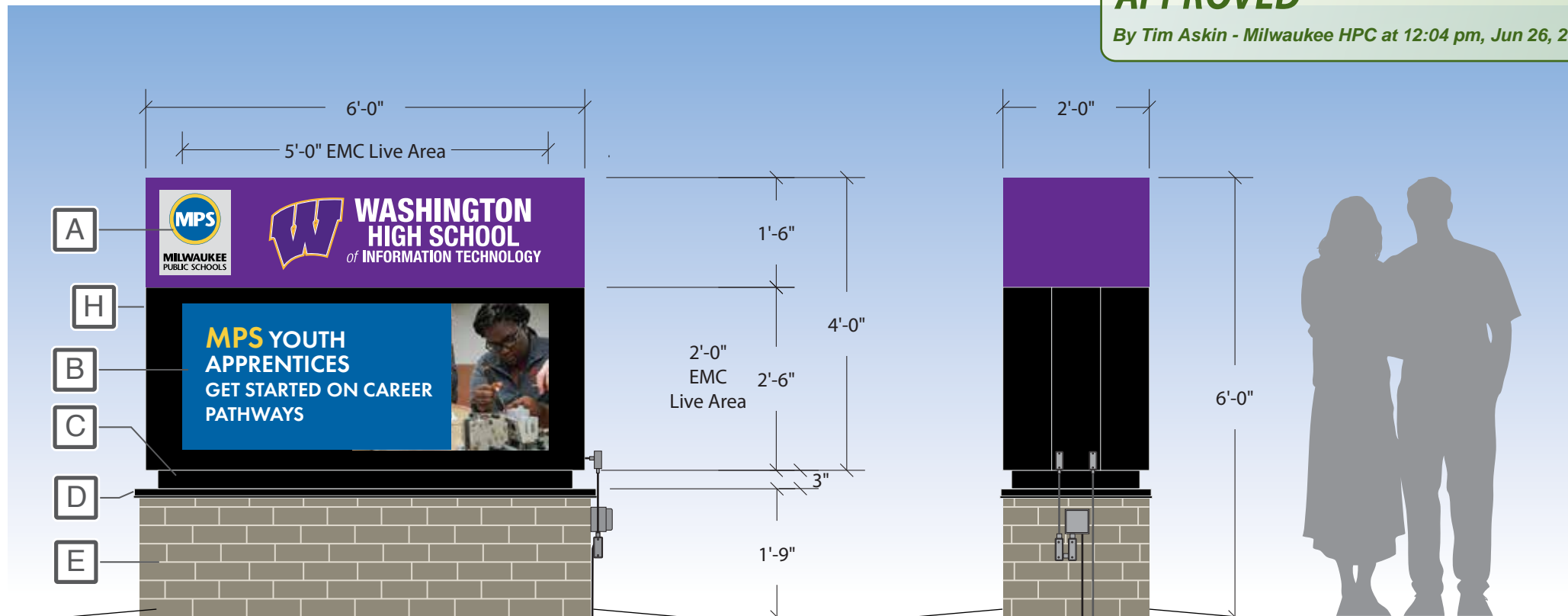
Sign to be oriented perpendicular from adjacent sidewalk and set back out of the public right of way, minimum setback TBD by city planner.

Colors:

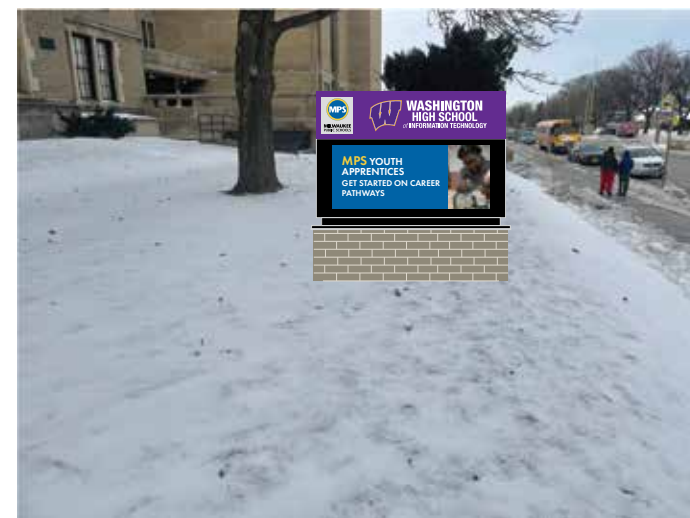
- (1) Match PMS 300C Blue (MPS Logo)
- (2) Match PMS 129C Yellow (MPS Logo)
- (3) Match 268 Victory Purple (Washington Logo)
- (4) Match 1235 Victory Gold (Washington Logo)
- (5) MP Black - Satin Finish
- (6) MP Purple - Satin Finish

APPROVED

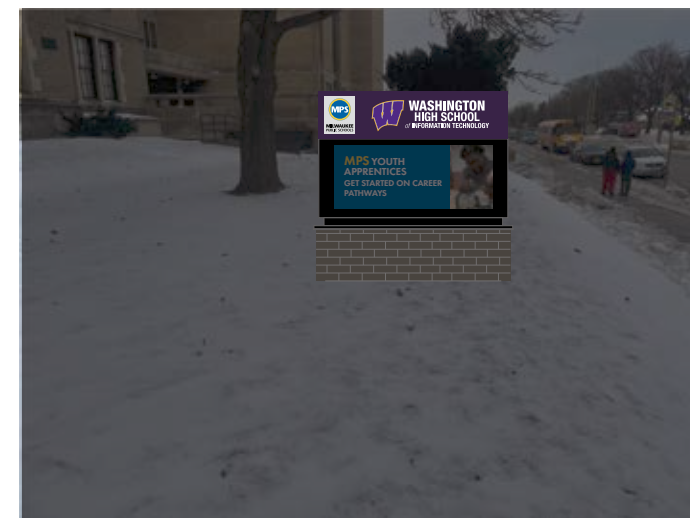
By Tim Askin - Milwaukee HPC at 12:04 pm, Jun 26, 2023



EXISTING VIEW - NTS



PROPOSED VIEW - NTS



PROPOSED NIGHT VIEW - NTS

The sign shown in this photo rendering is approximate and may change pending a tech survey.



4085 North 128th Street
Brookfield, WI 53005
p. 262-781-1500
www.LembergElectric.com

Client: VJS / MPS 035 - Washington High School

Location: 2525 N Sherman Blvd

City: Milwaukee, WI

Sales Representative: Brian Pritzkow

Project Manager: TBD

Designer: Eric Bailey / ALS

Scale: 1/2"=1'

Paper Size: 11x17

Signature / Date:

Client / Location or Project / Sign Classification / Version# or Sheet / Revision# / Drawing Status Date:

MPS_Washington_HS_MON(OV)_v01_r02_D 06-19-23

Monument Sign Specifications

One (1) Typical Monument Sign with New Sign Cabinet and Electronic Message Center (EMC) / New Masonry Base.

Illuminated / Double Sided / 21 Sq'

Main Sign Cabinet: Photocell for Automatic On & Off Lighting Control

(A) New Sign Cabinet

24" +/- deep fabricated aluminum sign cabinet with 1/8" routed aluminum faces, decorated with translucent vinyl graphics (and or digitally printed). Internal white LED illumination (Standard White).

(B) Electronic Message Center

Watchfire 16mm Full Color (RBG) LED Message Center. 2' x 5' viewable area. Note: Enclosure size is non-standard, to be custom fabricated. ACCESS PANEL IN TWO PARTS (2' H TOP / 6"H BOTTOM), TO ALLOW EMC SERVICE ONCE LB CONDUIT BODY IS INSTALLED

(C) Reveal

Fabricated aluminum reveal, 3"H x 68"W x 14"D

(D) Drip Cap

Fabricated aluminum brick cap with bent drip edge. To fit over existing masonry base (with holes to fit over existing poles) 6'-3" x 2'-1" x 1.5"H.

(E) Masonry Base

Typical Masonry Base BY OTHER.

(F) Center Pole

4" x 4" x 1/4" steel center pole, square / sign cabinet and EMC saddle mount pole. Pole is set in footing with masonry base constructed around it BY OTHER. Lemberg to coordinate setting of pole.

(G) Concrete Footing

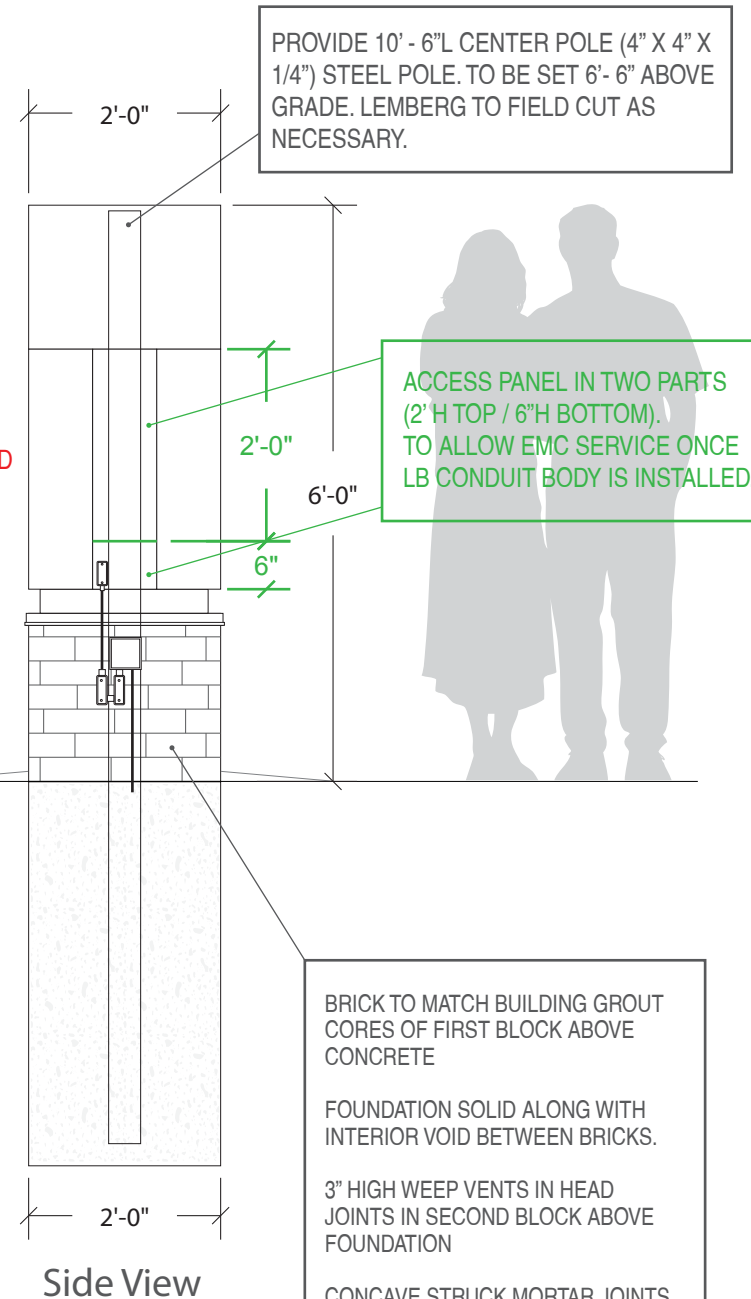
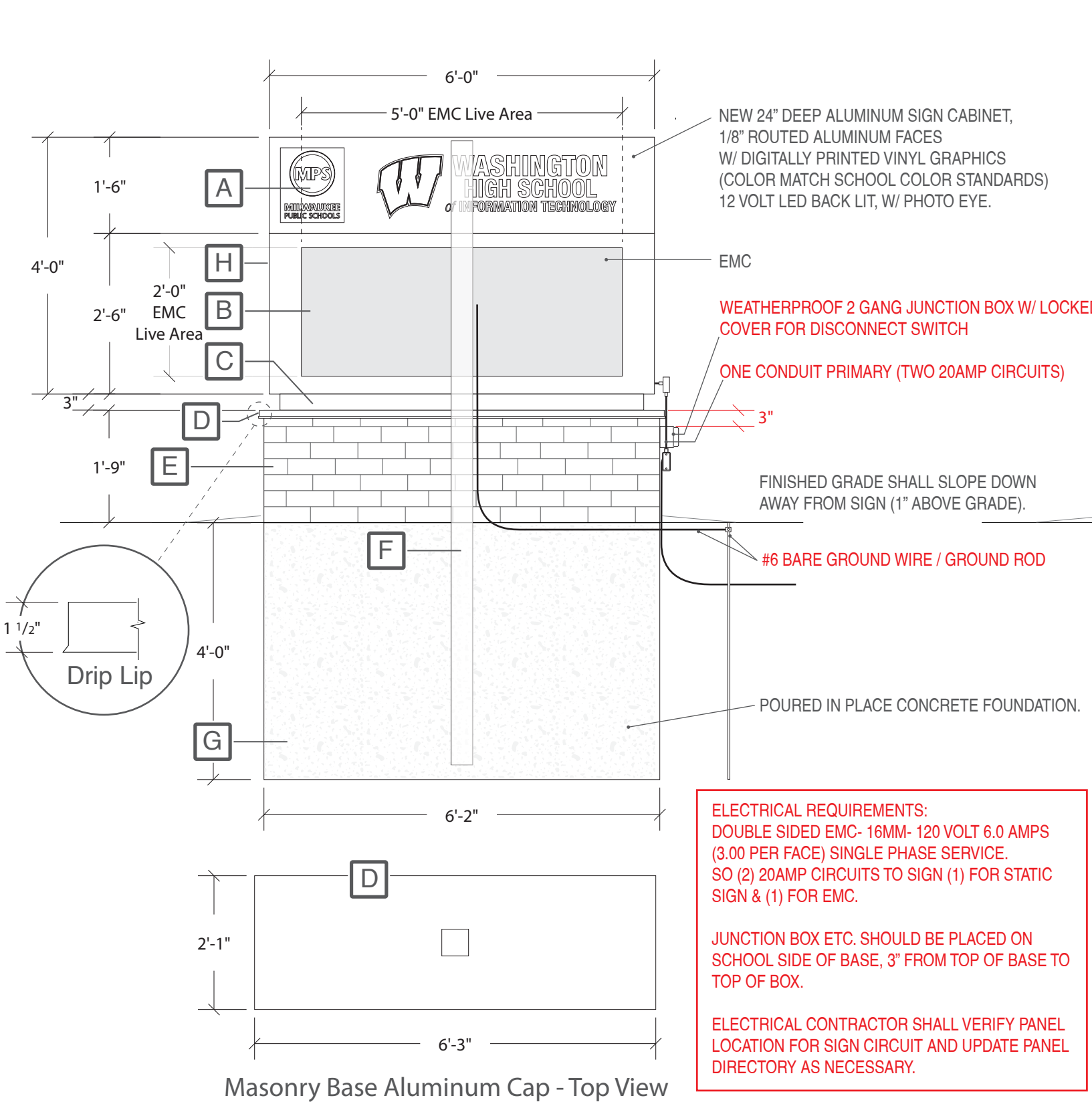
6' 2" x 2' x 4' deep typical concrete footing / by other

(H) Antenna Location

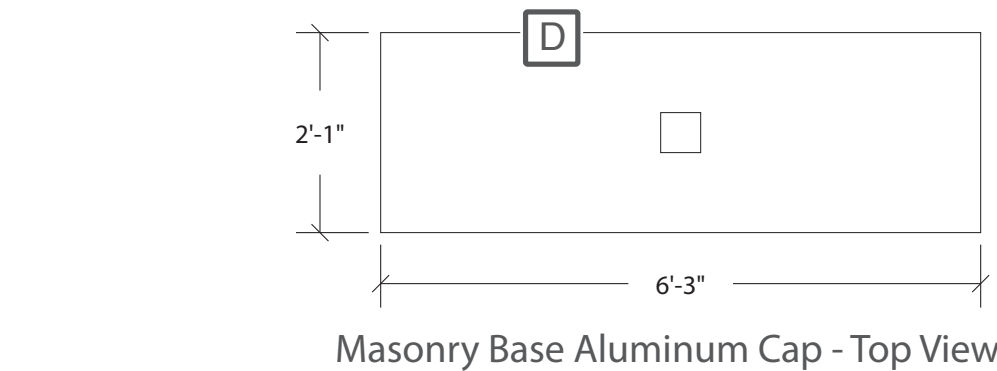
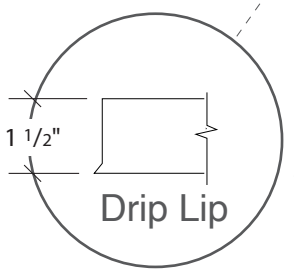
4G Wireless with Watchfire Life of Sign Cellular Data Plan. Receiver shall be hidden and mounted on the inside of the sign enclosure, to reduce vandalism.

General Notes

All signage components: cabinet, retainers, reveal, and drip cap should be painted black.
Sign to be oriented perpendicular from adjacent sidewalk and set back out of the public right of way, minimum setback TBD by city planner.



APPROVED
By Tim Askin - Milwaukee HPC at 12:04 pm, Jun 26, 2023



ELECTRICAL REQUIREMENTS:
DOUBLE SIDED EMC- 16MM- 120 VOLT 6.0 AMPS (3.00 PER FACE) SINGLE PHASE SERVICE. SO (2) 20AMP CIRCUITS TO SIGN (1) FOR STATIC SIGN & (1) FOR EMC.

JUNCTION BOX ETC. SHOULD BE PLACED ON SCHOOL SIDE OF BASE, 3" FROM TOP OF BASE TO TOP OF BOX.

ELECTRICAL CONTRACTOR SHALL VERIFY PANEL LOCATION FOR SIGN CIRCUIT AND UPDATE PANEL DIRECTORY AS NECESSARY.



4085 North 128th Street
Brookfield, WI 53005
p. 262-781-1500
www.LembergElectric.com

Client: VJS / MPS 035 - Washington High School
Location: 2525 N Sherman Blvd
City: Milwaukee, WI

Sales Representative: Brian Pritzkow
Project Manager: TBD
Designer: Eric Bailey / ALS

Scale: 1/2"=1'
Paper Size: 11x17
Signature / Date:

Client / Location or Project / Sign Classification / Version# or Sheet / Revision# / Drawing Status Date:
MPS_Washington_HS_MON(DD)_v01_r02_D 06-19-23



APPROVED
By Tim Askin - Milwaukee HPC at 12:04 pm, Jun 26, 2023



SIGNS

4085 North 128th Street
Brookfield, WI 53005
p. 262-781-1500
www.LembergElectric.com

Client: VJS / MPS 035 - Washington High School

Location: 2525 N Sherman Blvd

City: Milwaukee, WI

Sales Representative: Brian Pritzkow

Project Manager: TBD

Designer: Eric Bailey / ALS

Scale: N/A

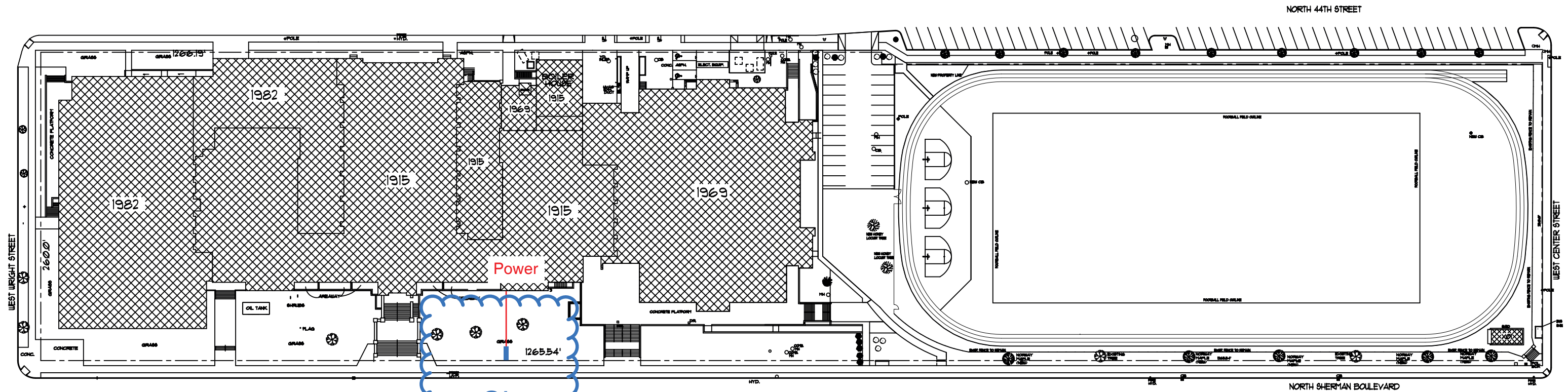
Paper Size: 11x17

Signature / Date:

Client / Location or Project / Sign Classification / Version# or Sheet / Revision# / Drawing Status Date:
MPS_Washington_HS_SURVEY_v01_r00_D 03-07-23

Exterior Digital Monument Sign - New

Sign to be oriented perpendicular from adjacent sidewalk and set back out of the public right of way, minimum setback TBD by city planner.



Split the distance between stair cases.
Install new sign on slight hill
Need Historical Approval

APPROVED
By Tim Askin - Milwaukee HPC at 12:04 pm, Jun 26, 2023



4085 North 128th Street
Brookfield, WI 53005
p. 262-781-1500
www.LembergElectric.com

Client: VJS / MPS 035 - Washington High School

Location: 2525 N Sherman Blvd

City: Milwaukee, WI

Sales Representative: Brian Pritzkow

Project Manager: TBD

Designer: Eric Bailey / ALS

Scale: N/A

Paper Size: 11x17

Signature / Date:

Client / Location or Project / Sign Classification / Version# or Sheet / Revision# / Drawing Status
MPS_Washington_HS_MAP_v01_r00_D

Date:
03-07-23

Notes & Revisions | Check List & Flagged Items

03-07-23
Initial drawing.
ALS

-

04-05-23
Added specs: two part EMC cover, per Tom & Zane.
AS

-

4-5-23
Need school logo colors.

06-19-2023
Changed monument sign face from polycarbonate to routed aluminum. (ZN)
MCM

-

-

-

-

-

-

-

-

-

-

-

-

-

-

-

-

-

-

-

-

-

-

-

Job File Location Sales: Customer Folders / VJS / MPS- ESSER Div 2 Exterior Monument Sign Upgrades / Cluster 3 / 035 - Washington HS / Art Work | Job File Location Design: Lemberg Sign Vault (Sync) / Cluster 3 / Washington HS (MPS 035)



SIGNS

4085 North 128th Street
Brookfield, WI 53005
p. 262-781-1500
www.LembergElectric.com

Client: VJS / MPS 035 - Washington High School

Sales Representative: Brian Pritzkow

Scale: N/A

Client / Location or Project / Sign Classification / Version# or Sheet / Revision# / Drawing Status

MPS_Washington_HS_PN_v01_r01_D

Date:

06-19-23

Location: 2525 N Sherman Blvd

Project Manager: TBD

Paper Size: 11x17

City: Milwaukee, WI

Designer: Eric Bailey / ALS / Mark Mayzik

Signature / Date:

These designs are the exclusive property of Lemberg Electric Inc. Use or duplication without expressed written permission of Lemberg Electric Inc. Is prohibited. Drawings are for conceptual use only. The document represents an approximation of materials & colors. Actual product colors may vary.