

GAS FIRED FURNACE SCHEDULE

TAG	FLOOR	AREA SERVED	LOCATION	MANUFACTURER AND MODEL	HEATING CAPACITY				COOLING COIL				TOTAL COOLING CAPACITY (MBH)	ELECTRICAL			CONDENSING UNIT WEIGHT (LBS)	NOTES			
					INPUT (MBH)	OUTPUT (MBH)	AREA (SQ FT)	VENTING (CFM)	APPROX. MIN. O.A. (CFM)	ESP. (IN.WC)	ESP. (IN.WC)	FAN (TONS)		NOX (PPM)	EAT (SQ. FT.)	LAT (SQ. FT.)			COOLING CAPACITY (MBH)	VOLTS	PHASE
F-1	FIRST	SERVING & SEATING	SERVING & SEATING	CARRIER 885CC06821-20	80.0	73.0	92.1	2-1/2"	1800	350	0.5	0.75	4.00	80.0/87.0	55.0/54.0	48.0	120	1	11.7	CL-1	160
F-2	FIRST	SERVING & SEATING	SERVING & SEATING	CARRIER 885CC06821-20	80.0	73.0	92.1	2-1/2"	1800	350	0.5	0.75	4.00	80.0/87.0	55.0/54.0	48.0	120	1	11.7	CL-1	160
F-3	FIRST	SOJIN AREA	KITCHEN & SEATING	CARRIER 885CC06821-20	80.0	75.0	92.1	2-1/2"	1800	400	0.5	0.75	4.00	80.0/87.0	55.0/54.0	48.0	120	1	11.7	CL-1	160

NOTES
1

CONDENSING UNIT SCHEDULE

TAG	SERIES	LOCATION	MANUFACTURER AND MODEL	TON	SEER	AMBIENT TEMP (DEG F)	DB (DEG F)	WB (DEG F)	DX COIL INLET TEMP (DEG F)	COOLING CAPACITY (MBH)	LIQUID LINE (IN)	REFRIG. SECTION (IN)	REFRIG. VOLTS	PHASE	HZ	MCA	MOCP	REFRIG. WEIGHT (LBS)	NOTES
CU-1	SEE FURNACE SCHEDULE	ROOF	CARRIER 24ABR348	4.0	13.0	95.0	80.0	67.0	48.0	48.0	3/8	1-1/8	208	1	60	25.2	40	R-410A	189
CU-2	SEE FURNACE SCHEDULE	ROOF	CARRIER 24ABR348	4.0	13.0	95.0	80.0	67.0	48.0	48.0	3/8	1-1/8	208	1	60	25.2	40	R-410A	189
CU-3	SEE FURNACE SCHEDULE	ROOF	CARRIER 24ABR348	4.0	13.0	95.0	80.0	67.0	48.0	48.0	3/8	1-1/8	208	1	60	25.2	40	R-410A	189

NOTES:
1. PROVIDE LOW AMBIENT PRESSURE CONTROLS.
2. REFRIGERANT LINE SIZES SHOWN FOR STANDARD INSTALLATION. WHEN EQUIVALENT LENGTH EXCEEDS 80 FT REFER TO MANUFACTURERS TONGUE APPLICATION GUIDE TO VERIFY CORRECT LINE SIZES.

EXHAUST FAN SCHEDULE

TAG	AREA SERVED	LOCATION	MANUFACTURER AND MODEL	APPROX. SP. IN (CFM)	FAN TYPE	HPM	DOME W/TS	HP	VOLT	PH	AMPS	LBS	NOTES
CEF-1	WOMEN TOILET ROOM	CEILING	BROAN R84	80	0.20	-	DIRECT	48	120	1	-	8	3
CEF-2	MEN'S TOILET ROOM	CEILING	BROAN R84	80	0.20	-	DIRECT	48	120	1	-	8	3
CEF-3	FAMILY TOILET ROOM	CEILING	BROAN R84	80	0.20	-	DIRECT	48	120	1	-	8	3
CEF-4	ELECTRICAL CLOSET	CEILING	BROAN R84	80	0.20	-	DIRECT	48	120	1	-	8	3
CEF-5	JANITORS CLOSET	CEILING	BROAN R84	80	0.20	-	DIRECT	48	120	1	-	8	3

NOTES:
1. PROVIDE HANGING ISOLATOR ROOFS AND DISCONNECT SWITCH.
3. EXHAUST FAN TO BE INTERLOCKED WITH WALL SWITCH BY ELECTRICAL CONTRACTOR.

GRILLE & DIFFUSER SCHEDULE

TAG	SERVICE	MANUFACTURER AND MODEL	TYPE	SIZE	LENGTH	DAMPERS	MATERIAL	REMARKS
SG-1	SUPPLY	SPRINK	SPRINK DUCT GRILLE	20x6	-	NO	STEEL	1
SG-2	SUPPLY	SPRINK	SPRINK DUCT GRILLE	28x6	-	NO	STEEL	1
SG-3	SUPPLY	DOUBLE	DOUBLE DEFLECTION SUPPLY GRILLE	14x8	-	NO	STEEL	1, 2
RG-1	RETURN	SURFACE	SURFACE INTD GRILLE	SEE PLAN	-	NO	STEEL	1
TG-1	TRANSFER	PRICE	SURFACE INTD GRILLE	14x2	-	NO	STEEL	1

NOTES:
1. COORDINATE EXACT LOCATIONS AND FRAME TYPE WITH ARCHITECTURAL REFLECTED CEILING PLAN.
2. PROVIDE WITH VOLUME DAMPER IN DUCTWORK.

KEE-1

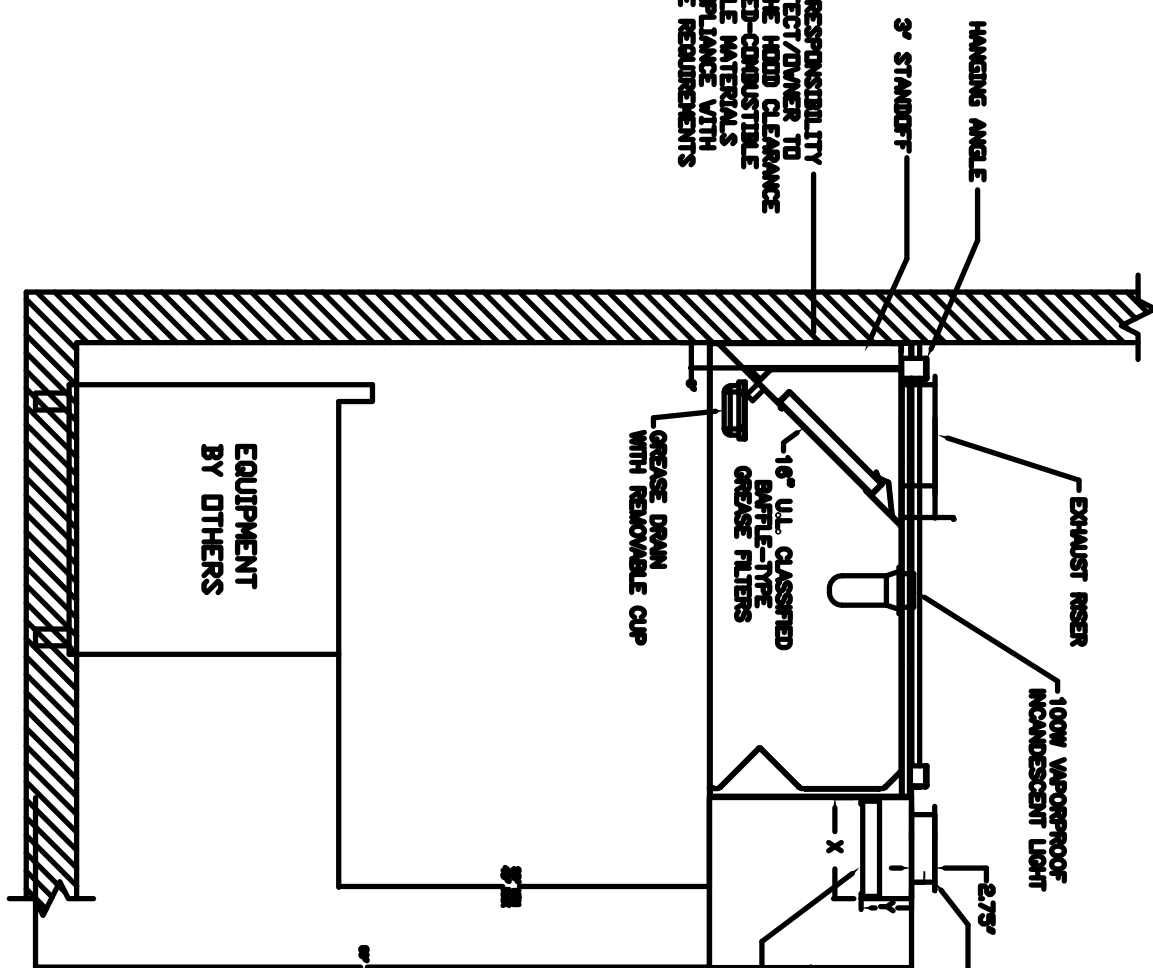
CAPTIVE-AIRE USB1320-RM Direct Drive Exhaust Only Unit With 13,750" Utility Set Exhaust Fan w/ 2" Grease Drain, Clockwise Rotation When Looking At Inlet. Exhaust Fan Handles 440 CFM @ 1,400 w/c ESP. Fan runs at 1951 RPM. Exhaust Fan is UL Classified for Use in Kitchens. Fan is Electrically Commutated Motor (ECM) - Discharge Orientation - Vertical Upper Left - CW Looking At Inlet.

MUA-1

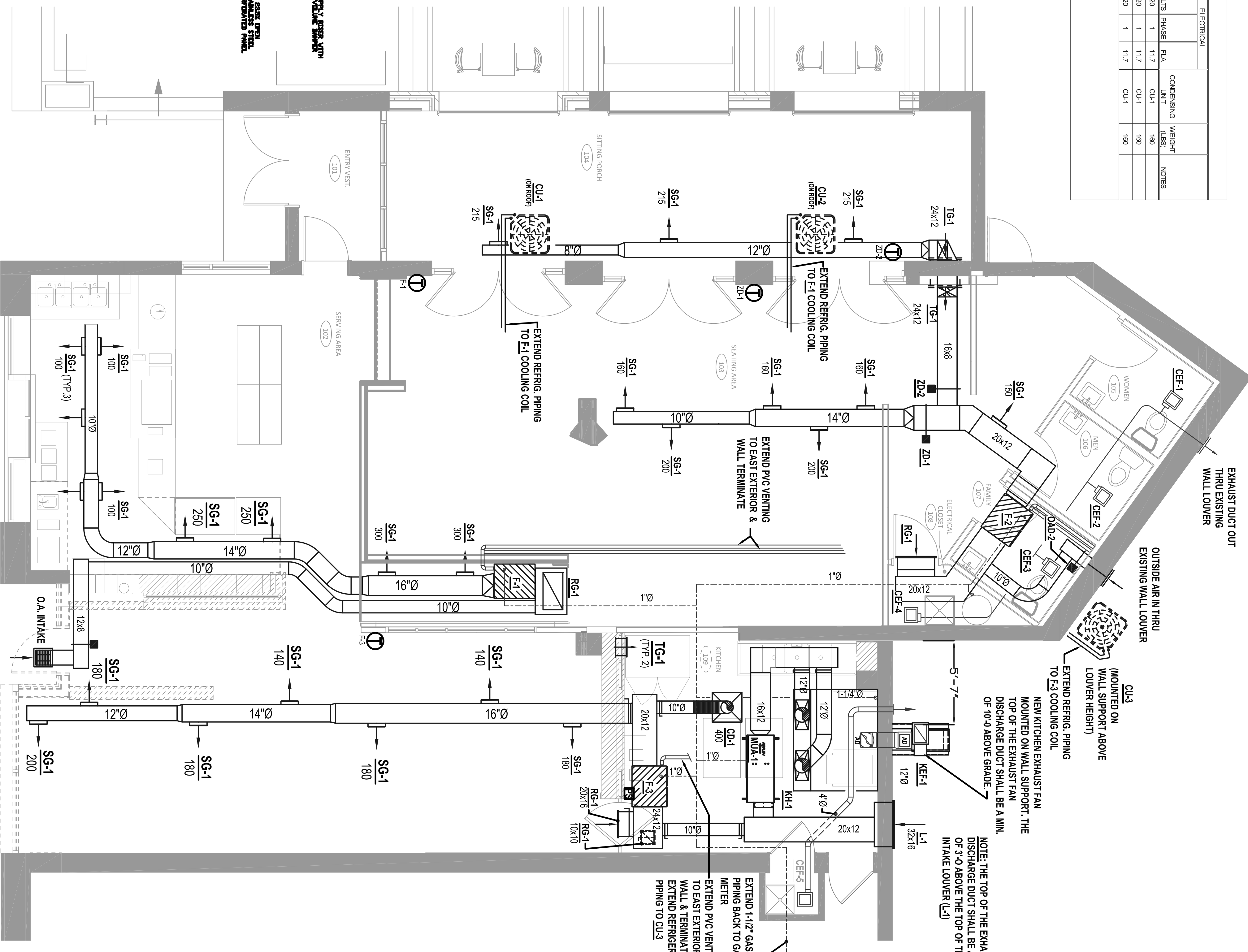
CAPTIVE-AIRE D76 Low CFM Direct Fired Heater. Belt Drive. Supply Fan handles 1125 CFM @ 0.500" w/c ESP. Fan runs at 1803 RPM. Heater supplies 103550 BTUs, 90°F Temperature Rise. Fuel: Natural Gas Supply Motor: 1,000 HP, 1 Phase, 208 V, 60Hz, 4.9 FLA, ODP (Open Drip Proof) Side Discharge

KH-1

CAPTIVE-AIRE #24ND-2-FSP-F - 7ft 0" Long Exhaust-Only Wall Canopy Hood with Front Perforated Supply Plenum with Built-in 3" Back Standoff. Hood is 12" High. Hood is 12" Wide. Hood is 54" Length x 24" Height. Fire Cabinet on the Right Side. Fire Cabinet on the Left Side. Fire Filter - 16" x 16" (15.625" by 15.625") Wide Stainless Steel Captive Solo Filter with hook, ETL Listed. Particulate capture efficiency: 85% efficient at 9 microns, 75% efficient at 5 microns. High Temp Assembly. Includes Clear Thermal and Shock Resistant Globe (L&S Fixture). ANSUL-3.0 Ansul 3 gallon Fire System in Utility Cabinet (includes pre-piped hood) with detection, tank(s), release mechanism, microswitches and pull station.



KITCHEN HOOD DETAIL



1st FLOOR HVAC PLAN
SCALE: 1/4" = 1'-0"

STONE CREEK COFFEE

2650 N. DOWNER AVENUE
MILWAUKEE, WI

W.H. JACKLIN, INC.
MECHANICAL CONTRACTORS
and ENGINEERS

8835 W. HEATHER AVE.
MILWAUKEE, WI 53224
(P) 414-355-6800
(F) 414-355-2211

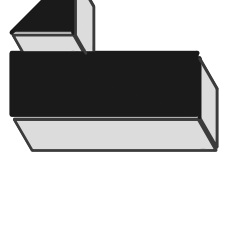
REVISIONS

DATE
SEPTEMBER 28, 2017

PROJECT NO.
S17179

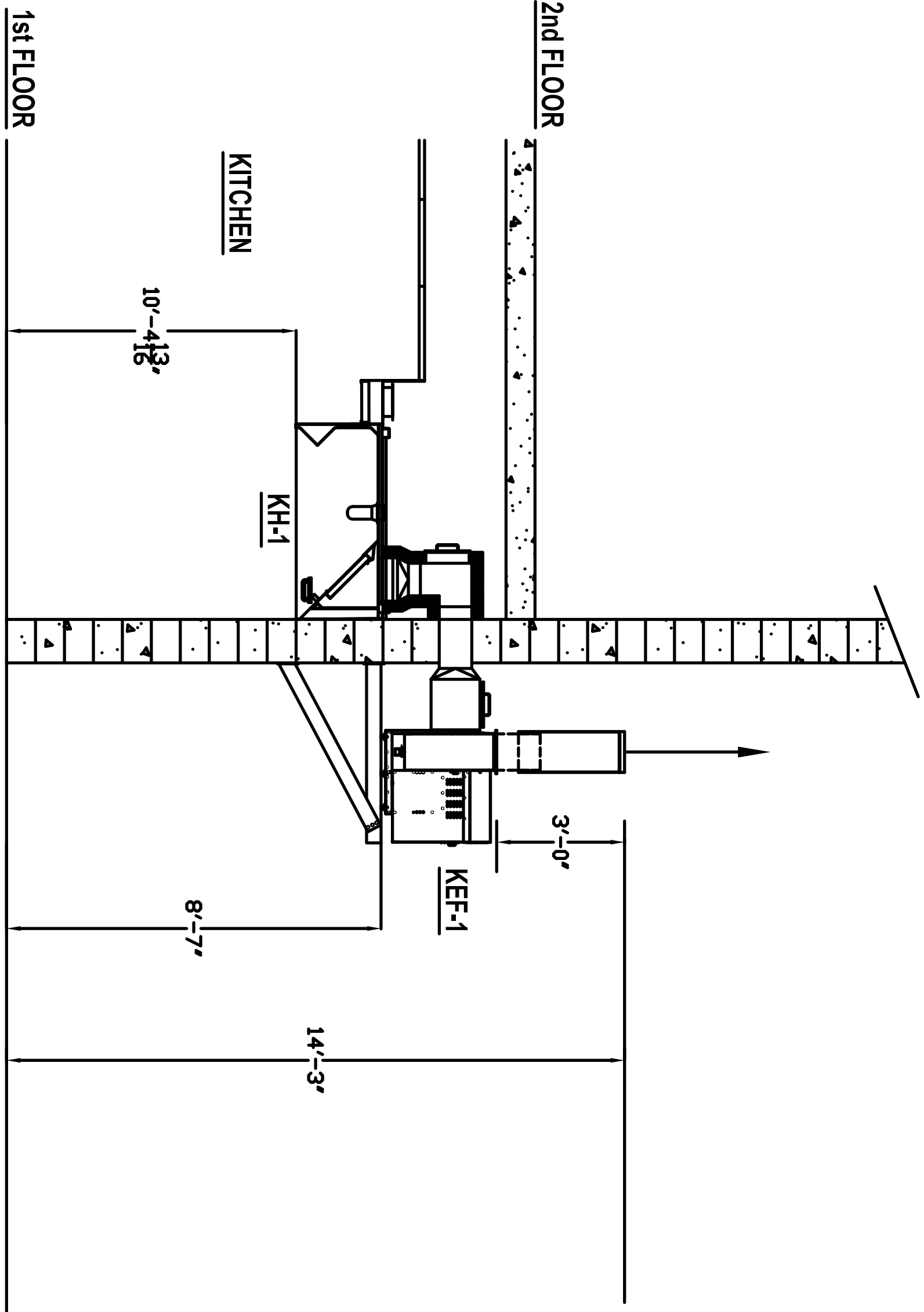
HVAC FIRST FLOOR PLAN

SHEET NUMBER
M-1



W.H. JACKLIN, INC.
MECHANICAL CONTRACTORS
and ENGINEERS

8835 W. HEATHER AVE.
MILWAUKEE, WI 53224
(P) 414-355-6800
(F) 414-355-2211



KITCHEN EXHAUST FAN & HOOD DETAIL



PyreWrap® Elite® 1.5
Duct Insulation – Grease
Duct ASTM E2336 System

PyreWrap® Elite® 1.5 Duct Insulation
Commercial Kitchen Grease Duct System Access Door Systems

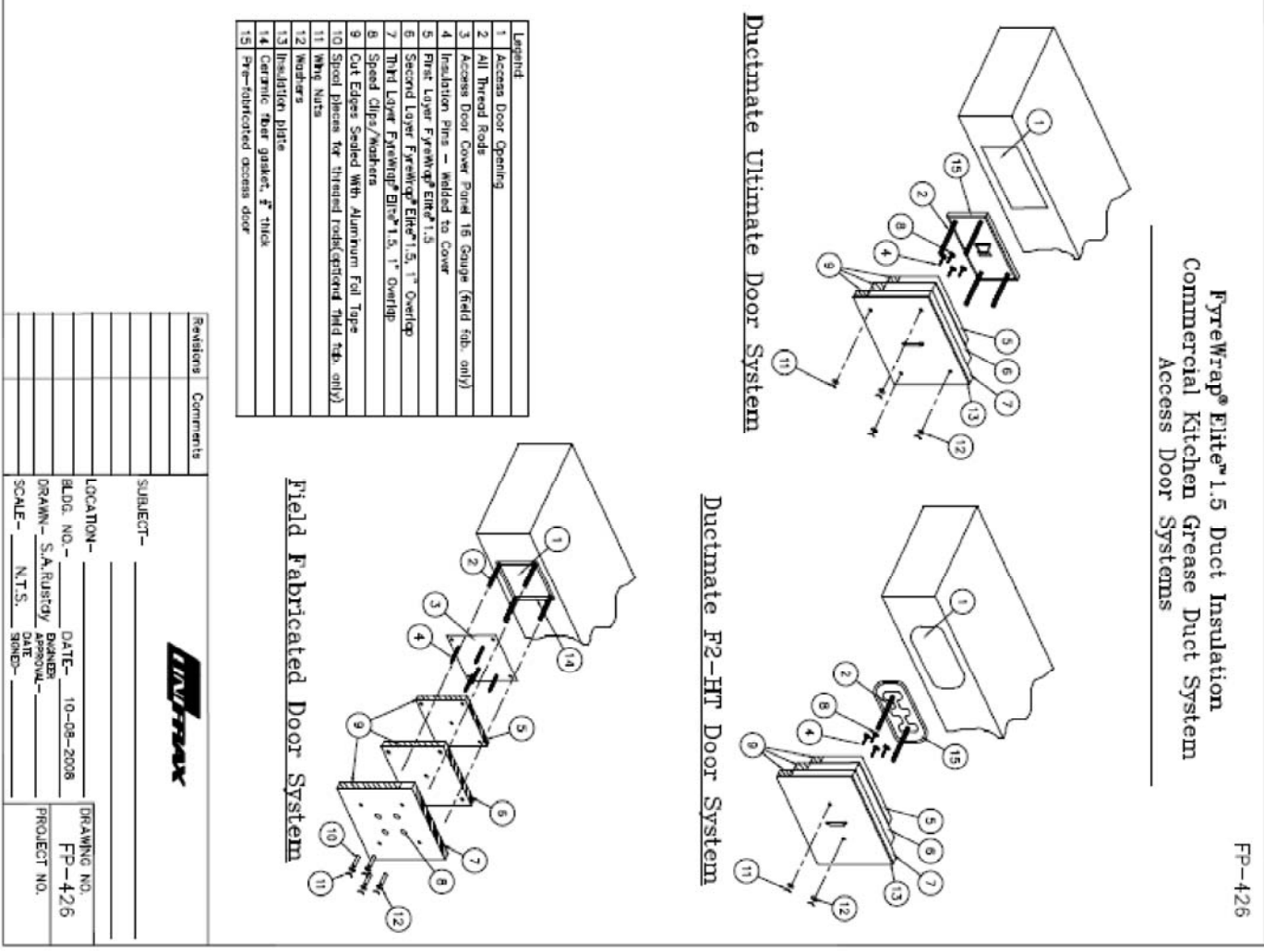
PyreWrap® Elite® 1.5 Duct Insulation is a non-toxic, non-flammable, fire-retardant, and mold-resistant insulation system designed for use in commercial kitchen grease duct systems. It provides superior fire and smoke protection, as well as sound attenuation and energy efficiency.

Key Features:

- Meets or exceeds UL Class 1 and Class 2 fire ratings
- Meets or exceeds ASTM E2336 fire performance criteria
- Non-toxic and non-flammable
- Mold-resistant and mildew-resistant
- Sound attenuation
- Energy efficiency

Typical Product Properties:

UL Class	UL Class 1, UL Class 2
ASTM E2336	Passes Class 1, Class 2
ASTM E119	Passes Class 1, Class 2
ASTM E136	Passes Class 1, Class 2
ASTM E84	Class 1
ASTM E1013	Class 1
ASTM E1190	Class 1
ASTM E1191	Class 1
ASTM E1192	Class 1
ASTM E1193	Class 1
ASTM E1194	Class 1
ASTM E1195	Class 1
ASTM E1196	Class 1
ASTM E1197	Class 1
ASTM E1198	Class 1
ASTM E1199	Class 1
ASTM E1200	Class 1
ASTM E1201	Class 1
ASTM E1202	Class 1
ASTM E1203	Class 1
ASTM E1204	Class 1
ASTM E1205	Class 1
ASTM E1206	Class 1
ASTM E1207	Class 1
ASTM E1208	Class 1
ASTM E1209	Class 1
ASTM E1210	Class 1
ASTM E1211	Class 1
ASTM E1212	Class 1
ASTM E1213	Class 1
ASTM E1214	Class 1
ASTM E1215	Class 1
ASTM E1216	Class 1
ASTM E1217	Class 1
ASTM E1218	Class 1
ASTM E1219	Class 1
ASTM E1220	Class 1



STONE CREEK COFFEE

2650 N. DOWNER AVENUE
MILWAUKEE, WI

REVISIONS

DATE
SEPTEMBER 28, 2017

PROJECT NO.
S17179

HVAC
DETAILS

SHEET NUMBER
M-2

