



WILSON D DESIGNERS
Remodeling & Construction Managers
8084 N 66th Street
Browder, Wisconsin 53223
Phone (414) 807-9675
Fax (414) 463-3366
E-Mail: wilson329@global.net

Project
PROPOSED ADDITION
103 W LLOYD ST
MILWAUKEE, WI 53212

Sheet Title
PLANS, SCHEDULE, AND
DETAIL

Revisions

Item	Date	By

Project Manager CSW

Drawn/Chk By CSW

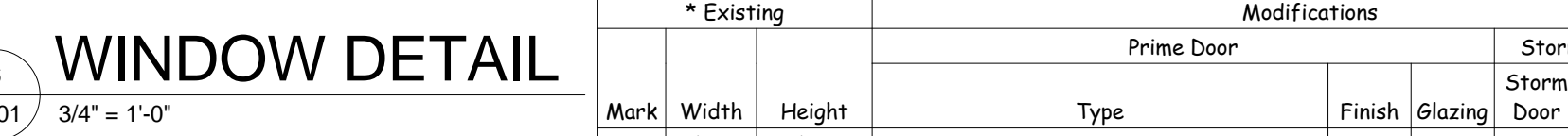
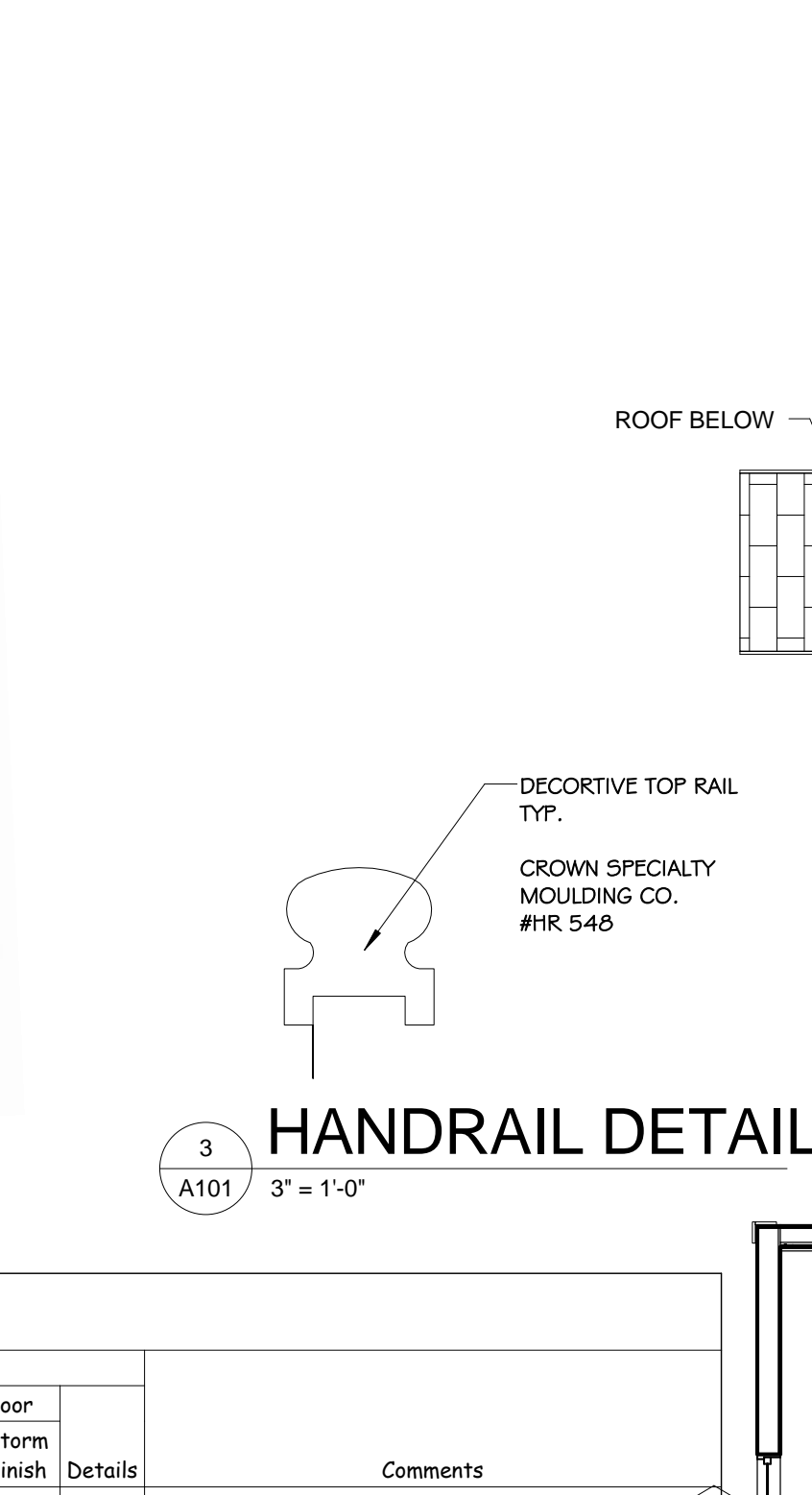
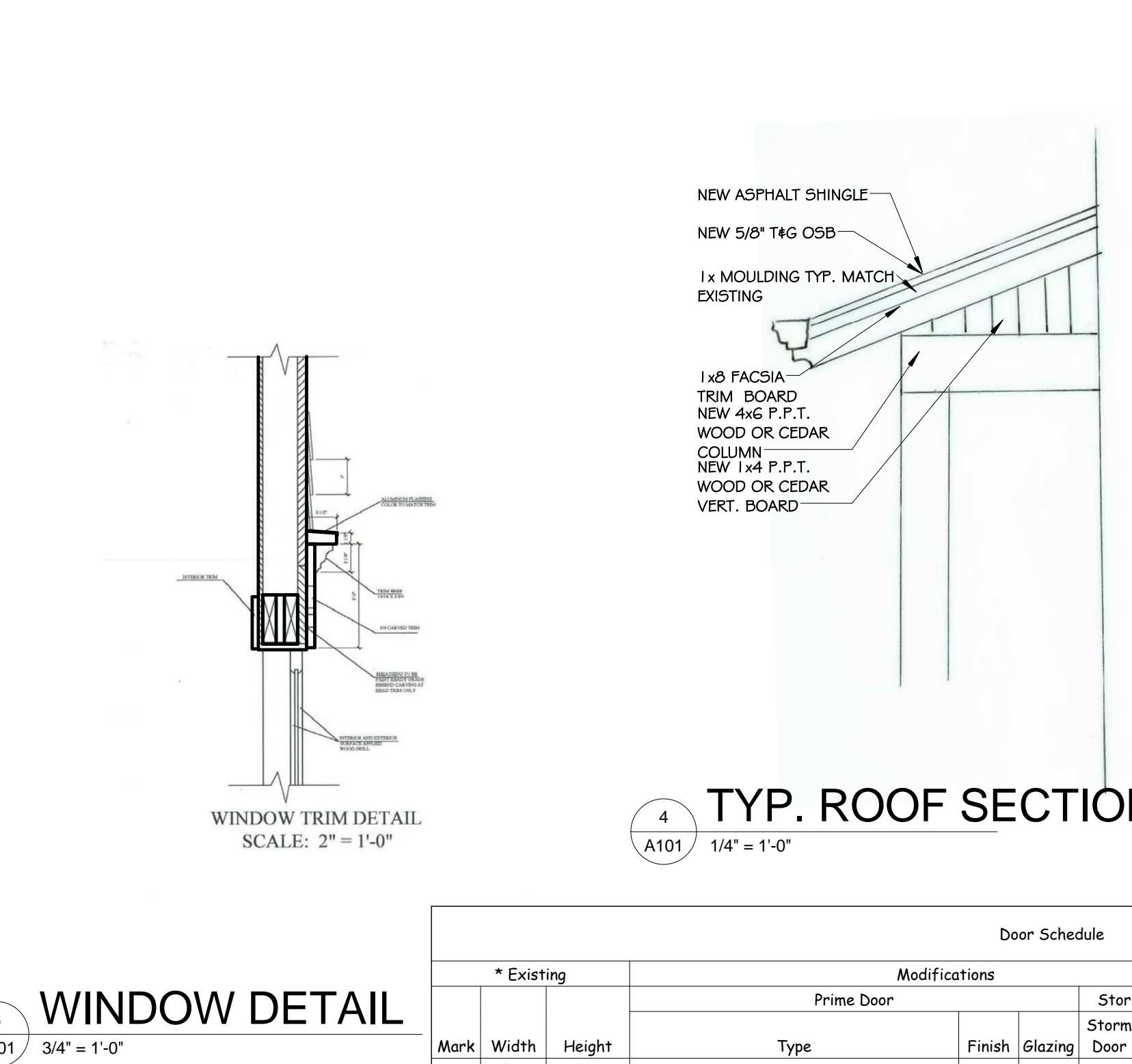
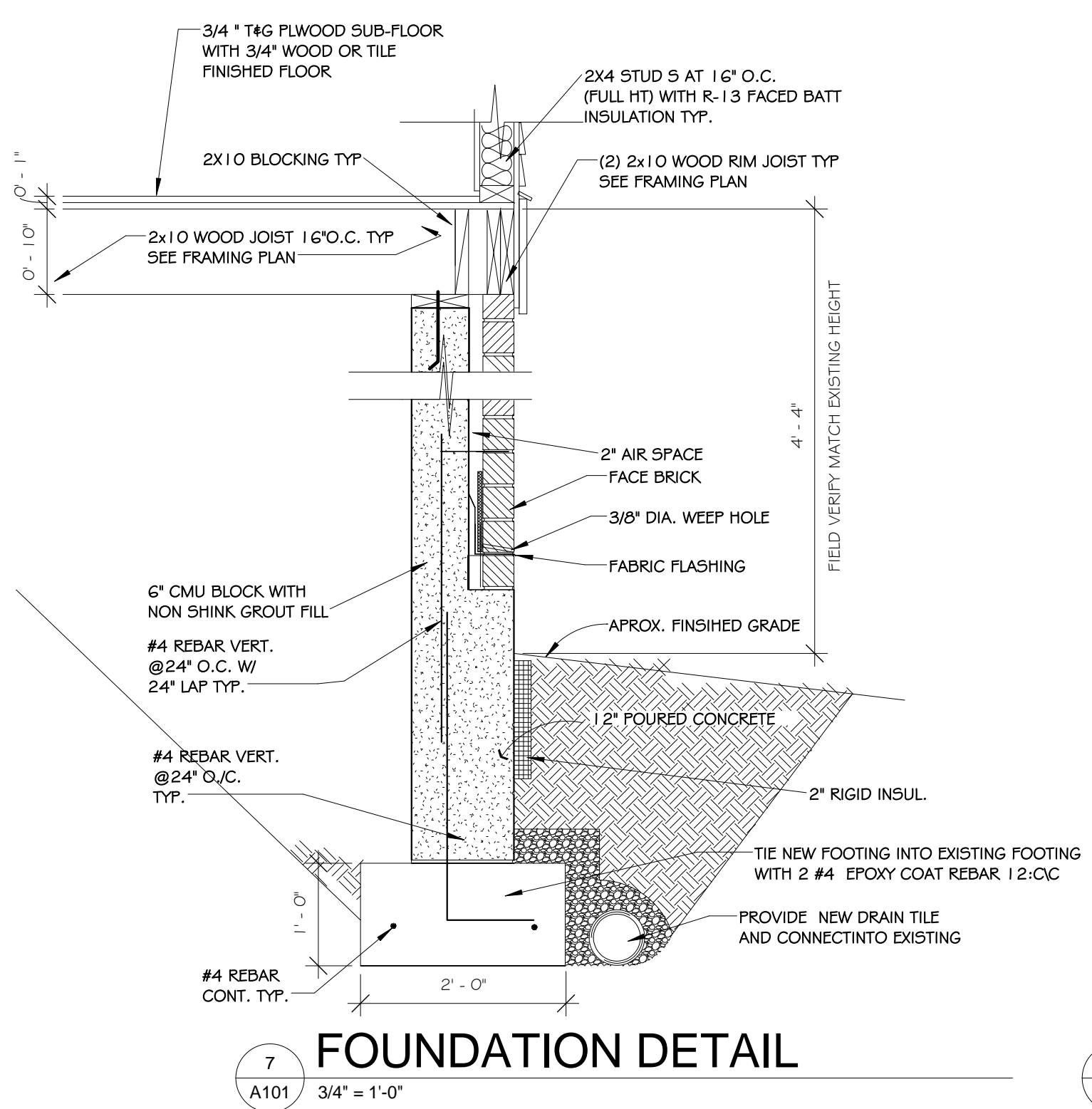
Wilson D Proj. No. Project Number

Client Project No. Project Number

Date 02/05/16

Sheet No.

A101

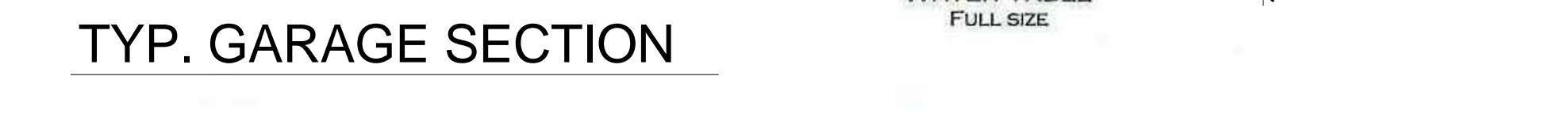
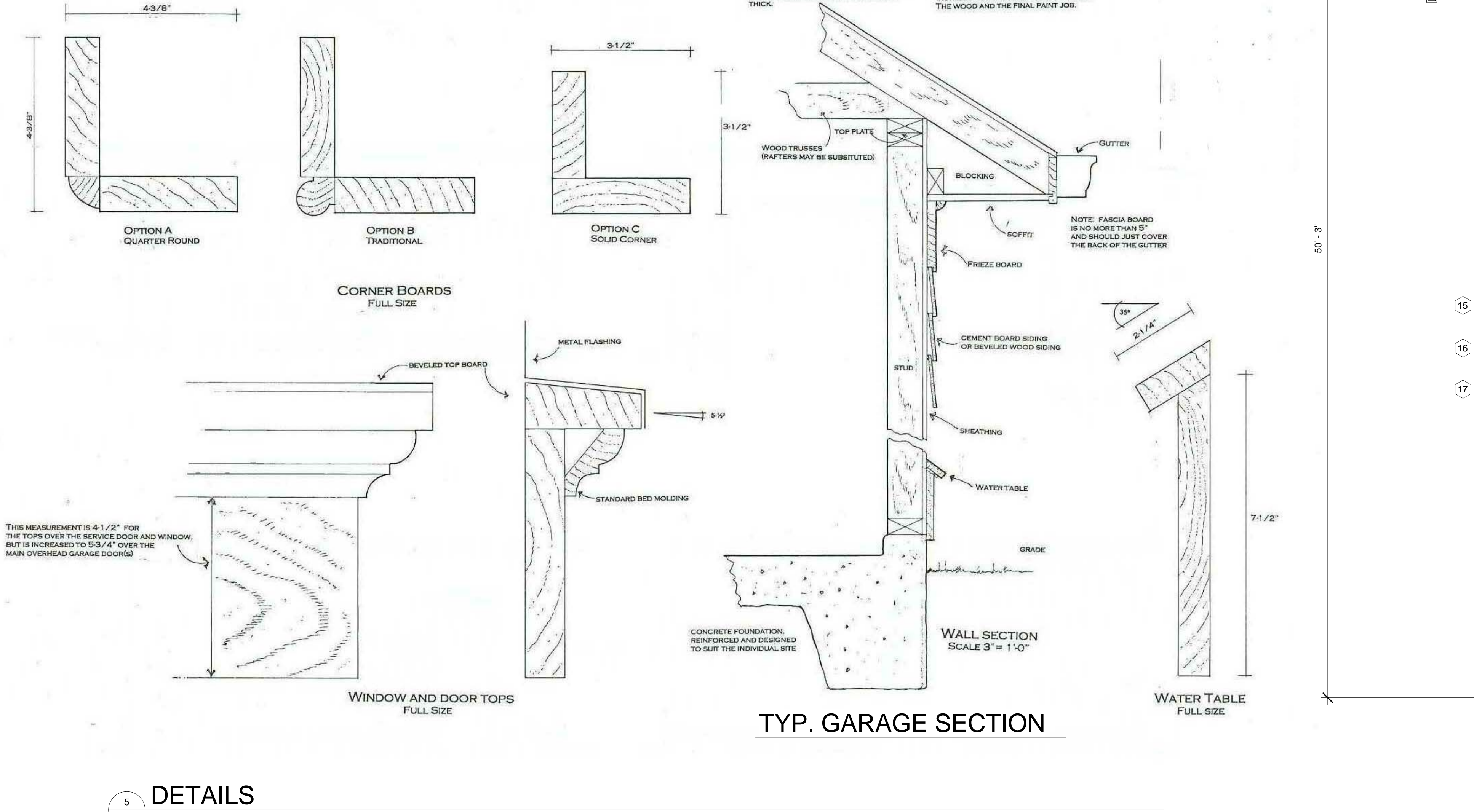
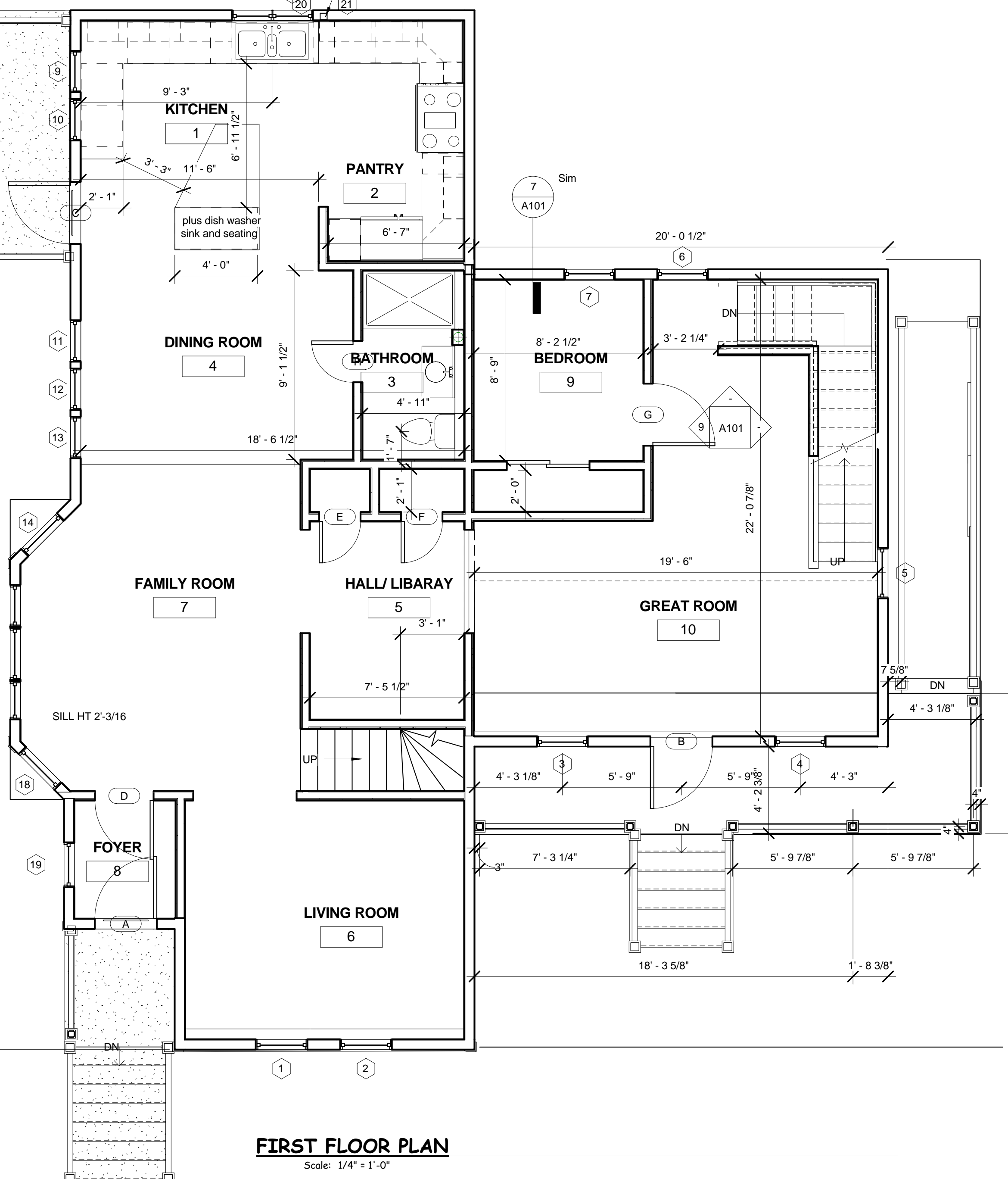
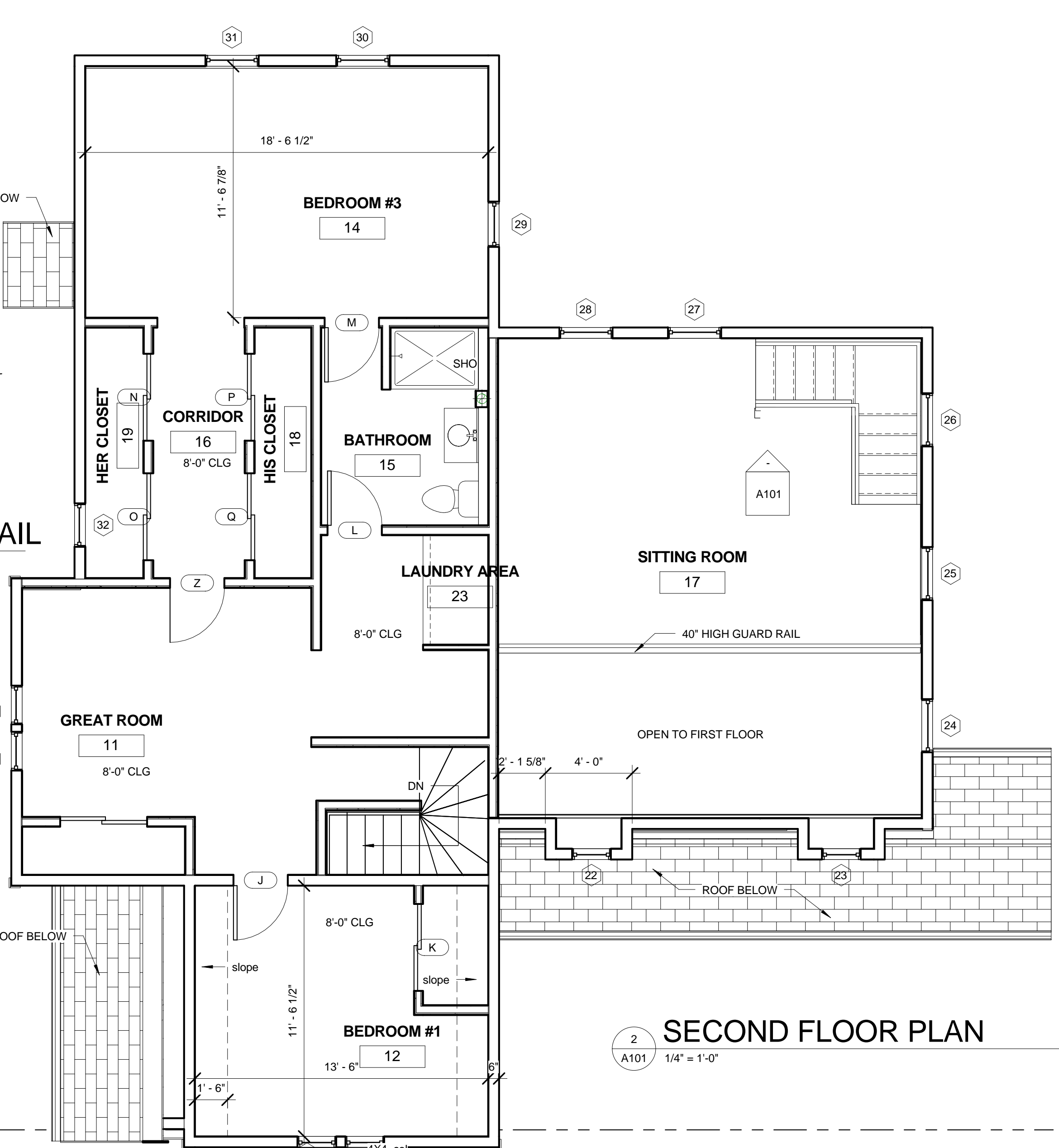


Window Schedule

Mark	g	Type	Width	Height	Type	Glazing	Details	Model	Manufacturer	Comments
1	DH	2'-0"	4'-0"	4'-0"	DH			MARVYN ULTIMATE	MARVYN ULTIMATE	
2	DH	2'-0"	4'-0"	4'-0"	DH			MARVYN ULTIMATE	MARVYN ULTIMATE	
3	DH	2'-5 3/8"	4'-0"	4'-0"	DH			MARVYN ULTIMATE	MARVYN ULTIMATE	
4	DH	2'-5 3/8"	4'-0"	4'-0"	DH			MARVYN ULTIMATE	MARVYN ULTIMATE	
5	DH	2'-5 3/8"	4'-0"	4'-0"	DH			MARVYN ULTIMATE	MARVYN ULTIMATE	
6	DH	2'-5 3/8"	4'-0"	4'-0"	DH			MARVYN ULTIMATE	MARVYN ULTIMATE	
7	DH	2'-5 3/8"	4'-0"	4'-0"	DH			MARVYN ULTIMATE	MARVYN ULTIMATE	
8	DH	2'-0"	4'-0"	4'-0"	DH			MARVYN ULTIMATE	MARVYN ULTIMATE	
9	DH	2'-0"	4'-0"	4'-0"	DH			MARVYN ULTIMATE	MARVYN ULTIMATE	
10	DH	2'-0"	4'-0"	4'-0"	DH			MARVYN ULTIMATE	MARVYN ULTIMATE	
11	DH	2'-0"	4'-0"	4'-0"	DH			MARVYN ULTIMATE	MARVYN ULTIMATE	
12	DH	2'-0"	4'-0"	4'-0"	DH			MARVYN ULTIMATE	MARVYN ULTIMATE	
13	DH	2'-0"	4'-0"	4'-0"	DH			MARVYN ULTIMATE	MARVYN ULTIMATE	
14	DH	2'-5 3/8"	4'-0"	4'-0"	DH			MARVYN ULTIMATE	MARVYN ULTIMATE	
15	DH	2'-0"	4'-0"	4'-0"	DH			MARVYN ULTIMATE	MARVYN ULTIMATE	
16	DH	2'-0"	4'-0"	4'-0"	DH			MARVYN ULTIMATE	MARVYN ULTIMATE	
17	DH	1'-11"	4'-0"	4'-0"	DH			MARVYN ULTIMATE	MARVYN ULTIMATE	
18	DH	2'-5 3/8"	4'-0"	4'-0"	DH			MARVYN ULTIMATE	MARVYN ULTIMATE	
19	DH	2'-2"	4'-0"	4'-0"	DH			MARVYN ULTIMATE	MARVYN ULTIMATE	
20	DH	1'-9 3/8"	4'-0"	4'-0"	DH			MARVYN ULTIMATE	MARVYN ULTIMATE	
21	DH	1'-9 3/8"	4'-0"	4'-0"	DH			MARVYN ULTIMATE	MARVYN ULTIMATE	
22	DH	1'-9 3/8"	4'-0"	4'-0"	DH			MARVYN ULTIMATE	MARVYN ULTIMATE	
23	DH	1'-9 3/8"	4'-0"	4'-0"	DH			MARVYN ULTIMATE	MARVYN ULTIMATE	
24	DH	2'-5 3/8"	4'-0"	4'-0"	DH			MARVYN ULTIMATE	MARVYN ULTIMATE	
25	DH	2'-5 3/8"	4'-0"	4'-0"	DH			MARVYN ULTIMATE	MARVYN ULTIMATE	
26	DH	2'-5 3/8"	4'-0"	4'-0"	DH			MARVYN ULTIMATE	MARVYN ULTIMATE	
27	DH	2'-5 3/8"	4'-0"	4'-0"	DH			MARVYN ULTIMATE	MARVYN ULTIMATE	
28	DH	2'-5 3/8"	4'-0"	4'-0"	DH			MARVYN ULTIMATE	MARVYN ULTIMATE	
29	DH	2'-11"	4'-11"	4'-11"	DH			MARVYN ULTIMATE	MARVYN ULTIMATE	
30	DH	2'-5 3/8"	4'-0"	4'-0"	DH			MARVYN ULTIMATE	MARVYN ULTIMATE	
31	DH	2'-5 3/8"	4'-0"	4'-0"	DH			MARVYN ULTIMATE	MARVYN ULTIMATE	
32	DH	2'-0"	4'-0"	4'-0"	DH			MARVYN ULTIMATE	MARVYN ULTIMATE	
33	DH	1'-9 3/8"	4'-0"	4'-0"	DH			MARVYN ULTIMATE	MARVYN ULTIMATE	
34	DH	1'-9 3/8"	4'-0"	4'-0"	DH			MARVYN ULTIMATE	MARVYN ULTIMATE	
35	DH	2'-0"	4'-0"	4'-0"	DH			MARVYN ULTIMATE	MARVYN ULTIMATE	
36	AWN	3'-0"	2'-0"	2'-0"	AWN					
37	AWN	3'-0"	2'-0"	2'-0"	AWN					
38	AWN	3'-0"	2'-0"	2'-0"	AWN					
39	AWN	3'-0"	2'-0"	2'-0"	AWN					
40	AWN	3'-0"	2'-0"	2'-0"	AWN					
41	AWN	3'-0"	2'-0"	2'-0"	AWN					
42	AWN	3'-0"	2'-0"	2'-0"	AWN					
43	DH	2'-5 3/8"	4'-0"	4'-0"	DH			MARVYN ULTIMATE	MARVYN ULTIMATE	

Door Schedule

Mark	Width	Height	Type	Finish	Glazing	Storm Door	Storm Finish	Details	Comments
A	3'-0"	6'-8"	36" x 84"	Cr	Cr				New primary door finish to be stained at exterior and stained at interior. Provide and install new exterior wood trim.
B	3'-0"	6'-8"	36" x 84"	SI	Cr				New primary door finish to be stained at exterior and stained at interior. Provide and install new exterior wood trim.
C	3'-0"	6'-8"	36" x 84"	SI	Cr				New primary door finish to be stained at exterior and stained at interior. Provide and install new exterior wood trim.
D	2'-10"	6'-8"	34" x 80"	SI	-				
E	2'-0"	6'-8"	24" x 80"	SI	-				
F	2'-0"	6'-8"	24" x 80"	SI	-				
G	3'-0"	6'-8"	36" x 80"	SI	-				
H	2'-0"	6'-8"	24" x 80"	SI	-				
I	4'-0"	6'-8"	48" x 80"	SI	-				
J	2'-4"	6'-8"	30" x 80"	SI	-				
K	4'-0"	6'-8"	48" x 80"	SI	-				
L	2'-4"	6'-8"	30" x 80"	SI	-				
M	2'-4"	6'-8"	30" x 80"	SI	-				
N	4'-0"	6'-8"	48" x 80"	SI	-				
O	4'-0"	6'-8"	48" x 80"	SI	-				
P	4'-0"	6'-8"	48" x 80"	SI	-				
Q	4'-0"	6'-8"	48" x 80"	SI	-				
R	4'-0"	6'-8"	48" x 80"	SI	-				
S	2'-0"	6'-8"	24" x 80"	SI	-				
T	2'-4"	6'-8"	30" x 80"	SI	-				
U	2'-4"	6'-8"	30" x 80"	SI	-				
V	2'-4"	6'-8"	30" x 80"	SI	-				
W	16'-0"	7'-0"	16039_Overhead_Panel_Garage_Door_Colonial_1993	SI	-				
X	2'-4"	6'-8"	30" x 84"	SI	-				
Z	2'-4"	6'-8"	30" x 80"	SI	-				



THIS MEASUREMENT IS 4 1/2" FOR THE TOPS OVER THE BEVELED DOOR AND WINDOW, BUT IS INCREASED TO 5-3/4" OVER THE MAIN OVERHEAD GARAGE DOOR.

NOTE: FASCIA BOARD IS NO MORE THAN 5" AND SHOULD JUST COVER THE BACK OF THE GUTTER.

IF FINE IS USED IT SHOULD BE CLEAR, SMOOTH EASTERN WHITE PINE, WHICH HAS MODERATE DECAY RESISTANCE. WESTERN PINE IS NOT RECOMMENDED BECAUSE THEY ARE HIGHLY SUSCEPTIBLE TO EARLY DECAY IN AN OUTDOOR INSTALLATION.

*FLAT TRIM AROUND WINDOWS AND DOORS, THE CORNER BOARDS, FREEZE BOARDS, AND BARRING CORNER BOARDS ARE ALL 5/4" THICK.

*PLEASE NOTE THAT QUARTER-SAWN WOOD WILL LAY FLATTER, HOLD PAINT BETTER AND GENERALLY LAST LONGER THAN PLAIN SAWS WOOD OF THE SAME SPECIES.

*RADIALLY-SAWN (A TYPE OF QUARTER-SAWN) EASTERN WHITE PINE OR SPRUCE CLAPBOARDS ARE RECOMMENDED.

*RESEARCH HAS SHOWN THAT WHEN NEW, BARE WOOD IS LEFT EXPOSED TO THE EXTERIOR ELEMENTS FOR A PERIOD ONLY A WEEK OR TWO, THE LIFE OF THE PAINT JOB APPLIED TO IT IS LIKELY TO BE DECREASED. PRIME AND PARTING WOOD FROM TO INSTALLATION CAN INCREASE THE LIFE OF THE WOOD AND THE FINAL PAINT JOB.



WILSON DESIGNERS
 Remodeling &
 Construction Managers
 8084 N 66th Street
 Browdeer, Wisconsin 53223
 Phone (414) 807-9675
 Fax (414) 463-3366
 E-Mail : wilson32@bglobal.net

Project

PROPOSED ADDITION
 103 W LLOYD ST
 MILWAUKEE, WI 53212

Sheet Title

ELEVATIONS AND
 SITE PLAN

Revisions

Item	Date	By

Project Manager Designer

DrawnBy/Chk By Author

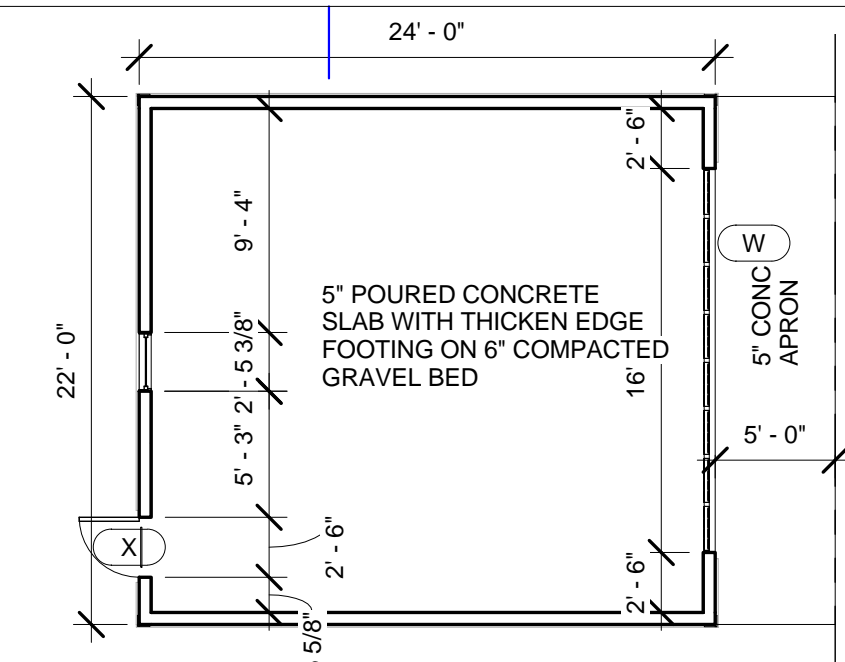
Wilson D Proj.No. Project Number

Client Project No. Project Number

Date 03/10/16

Sheet No.

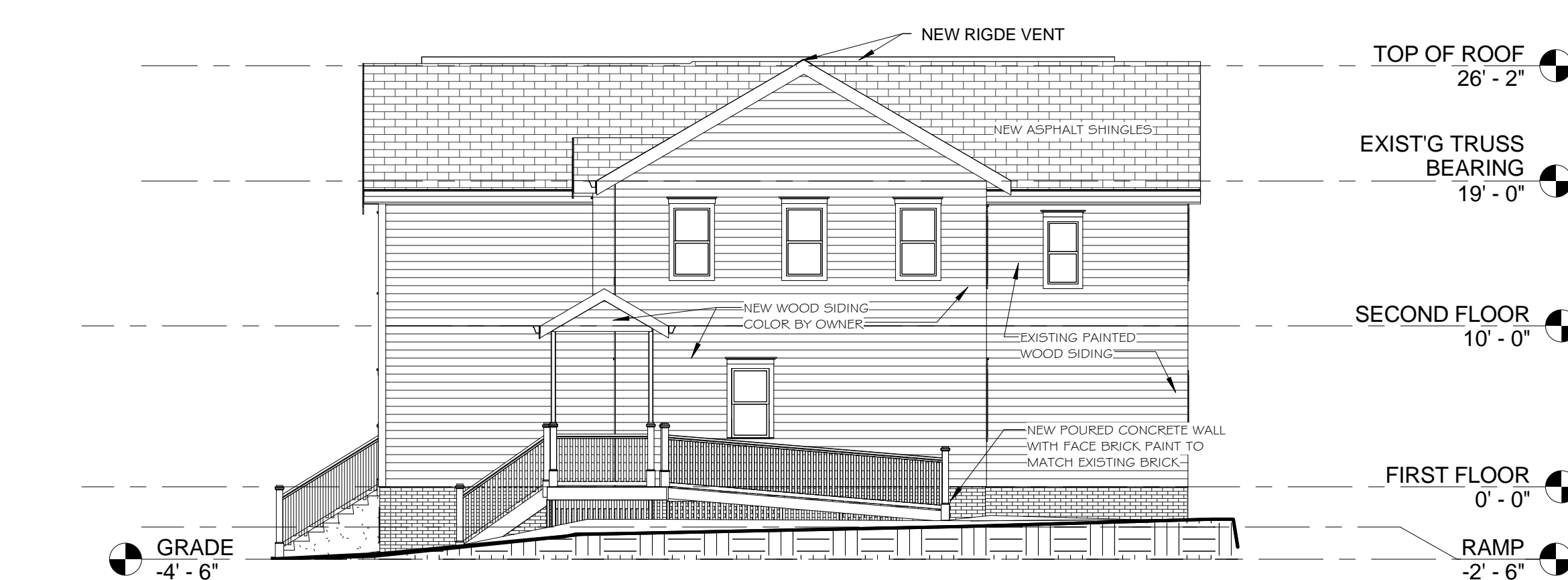
A102



10 GARAGE FLOOR PLAN
 1/8" = 1'-0"



3 SOUTH ELEVATION
 1/8" = 1'-0"



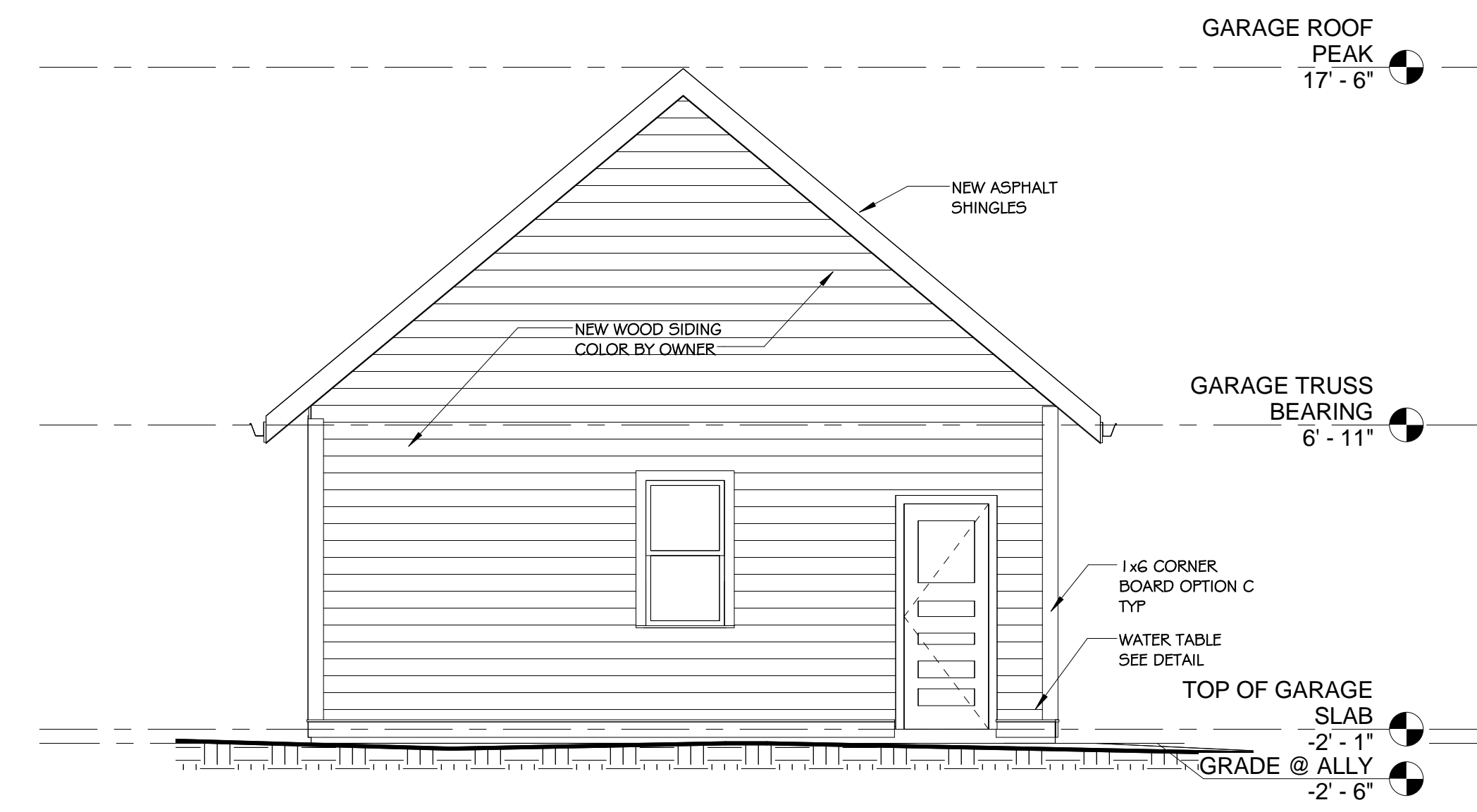
2 WEST ELEVATION
 1/8" = 1'-0"



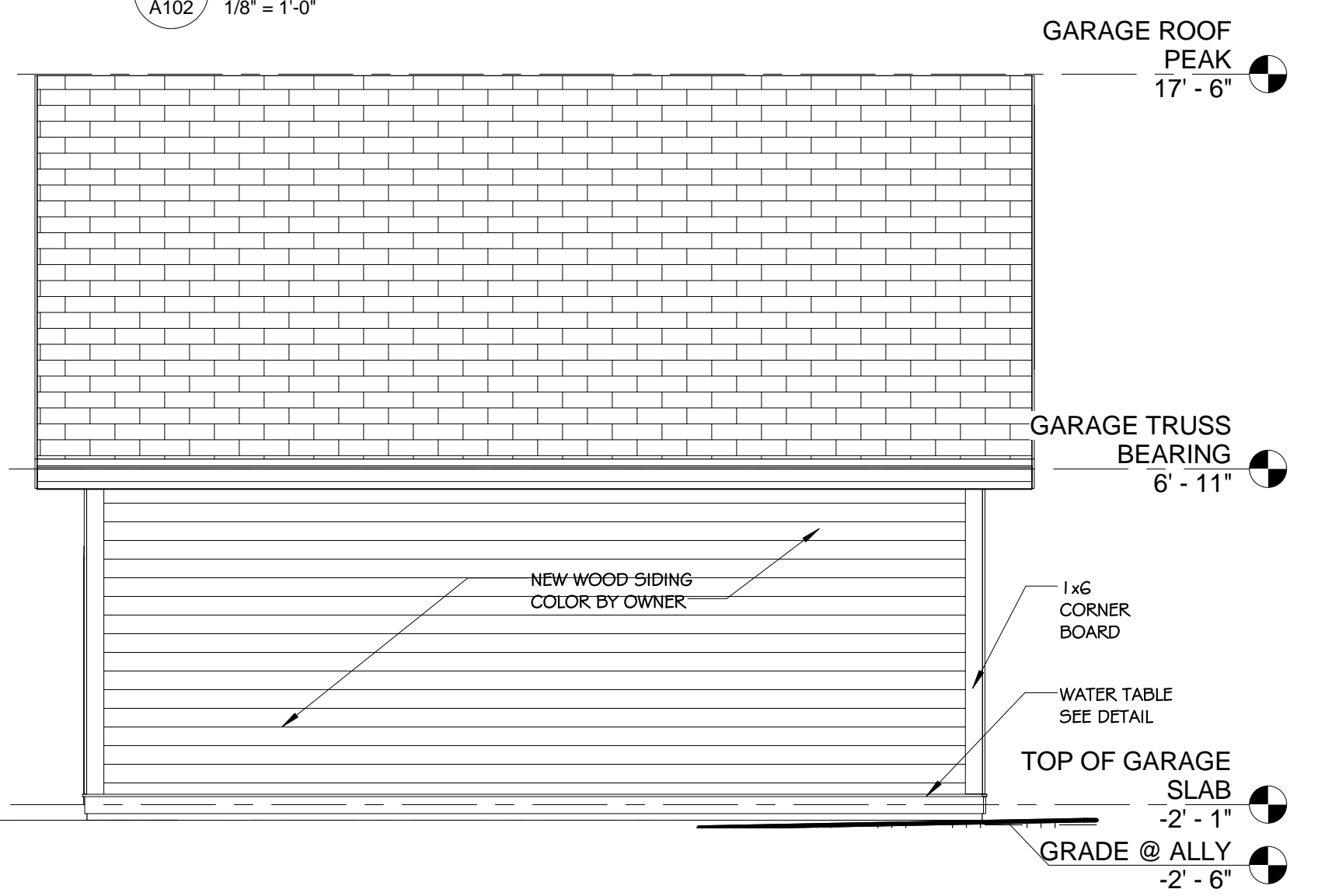
1 NORTH ELEVATION
 1/8" = 1'-0"



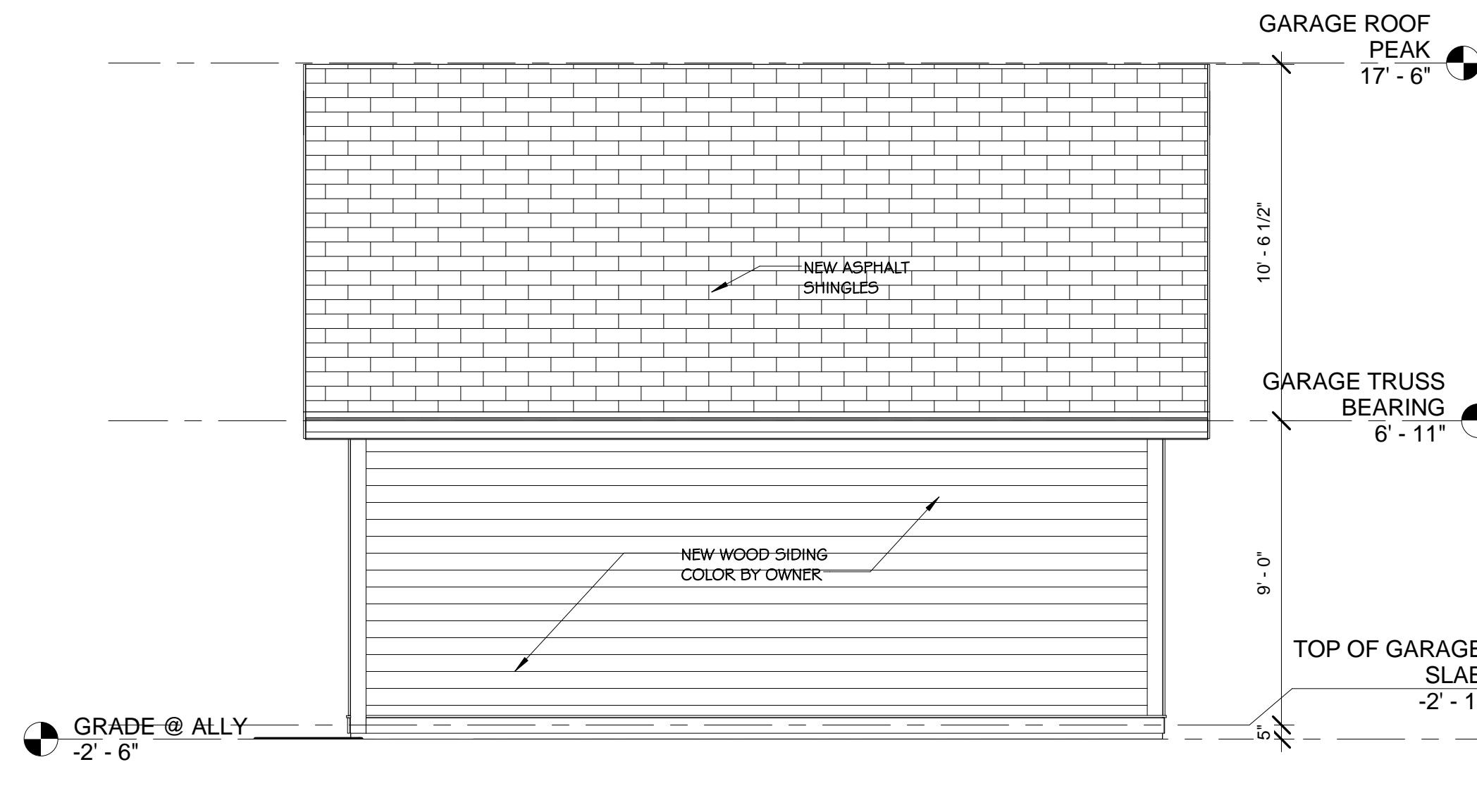
4 EAST ELEVATION
 1/8" = 1'-0"



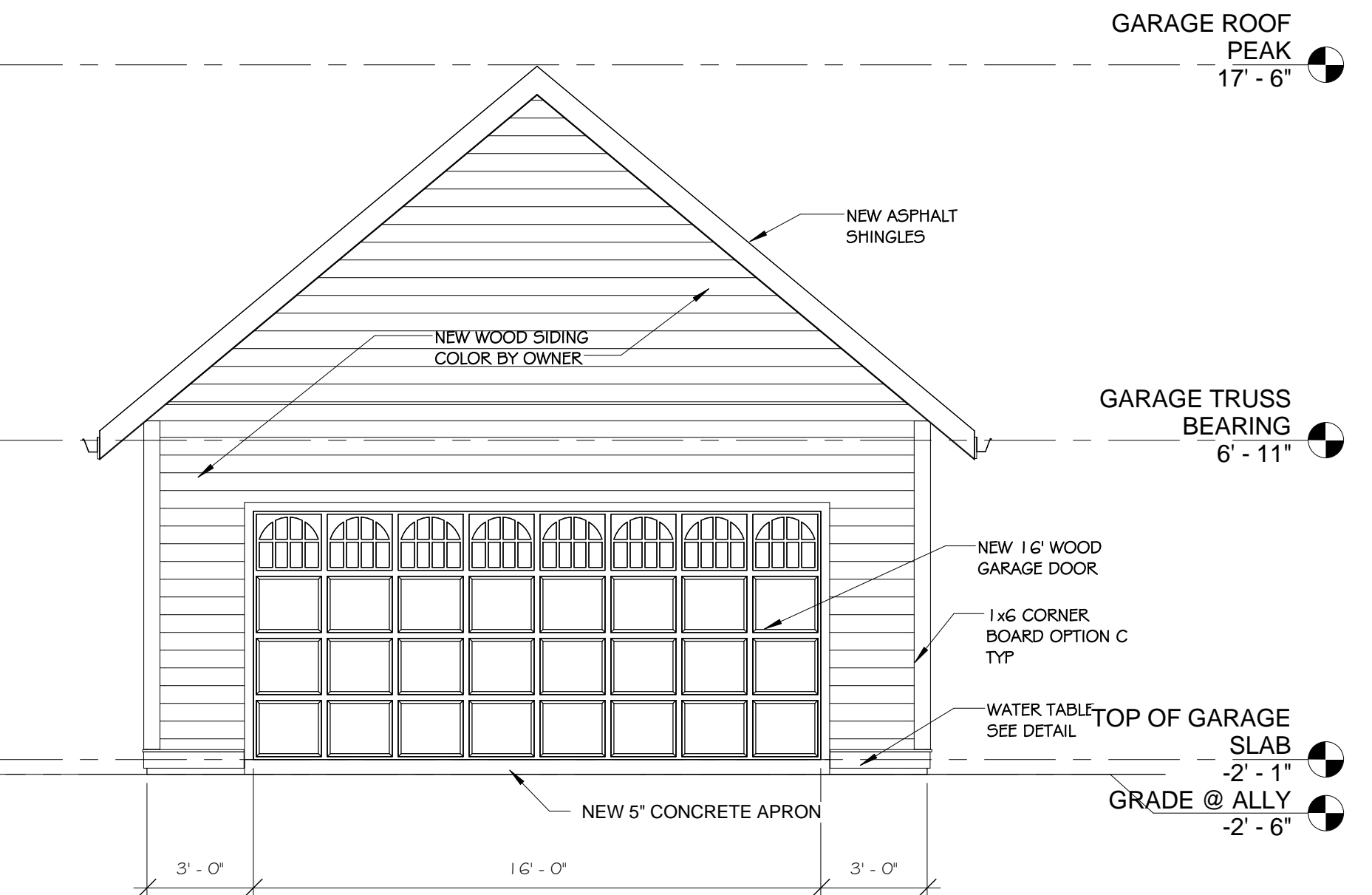
8 GARAGE REAR ELEVATION
 1/4" = 1'-0"



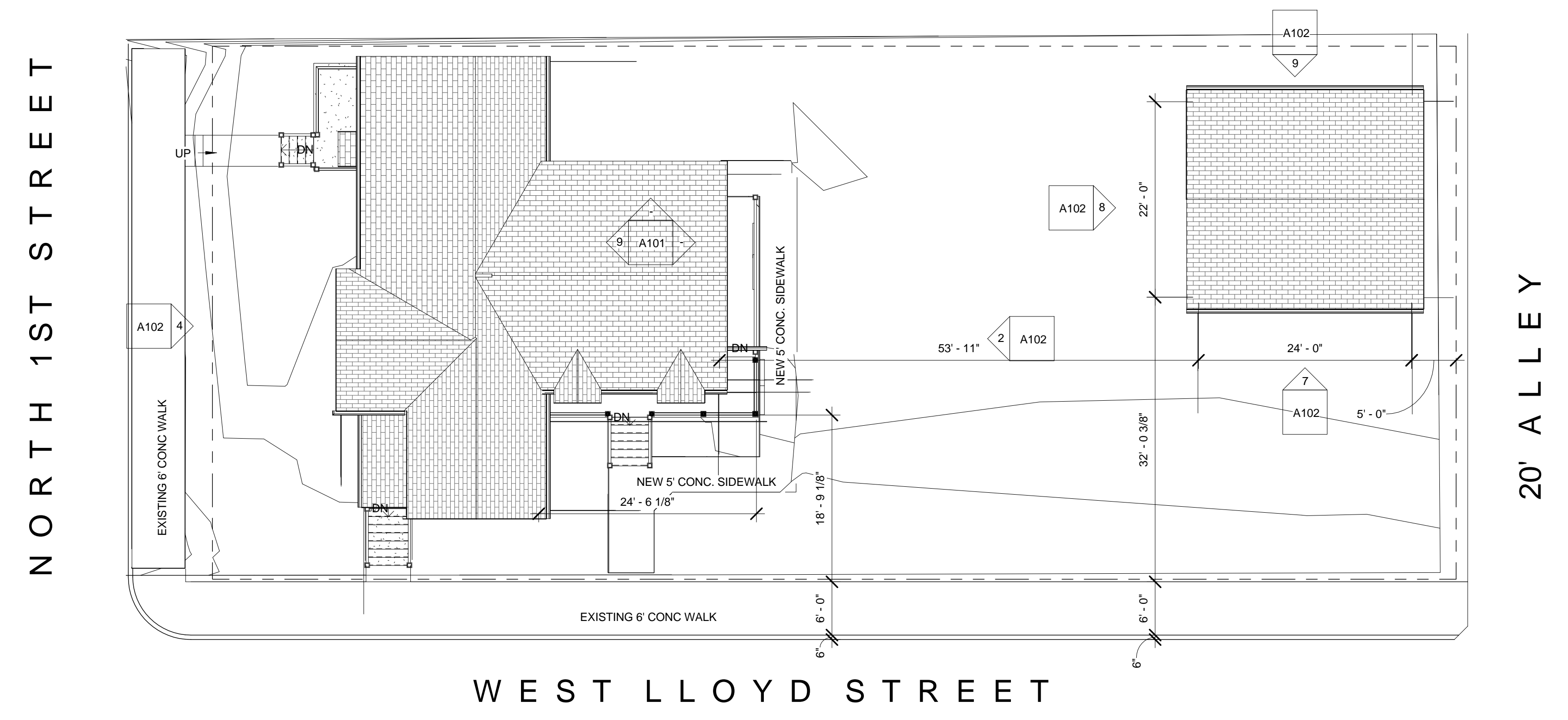
7 GARAGE LEFT ELEVATION
 1/4" = 1'-0"



9 GARAGE RIGHT ELEVATION
 1/4" = 1'-0"



6 GARAGE FRONT ELEVATION
 1/4" = 1'-0"



5 SITE MAP
 1" = 10'-0"