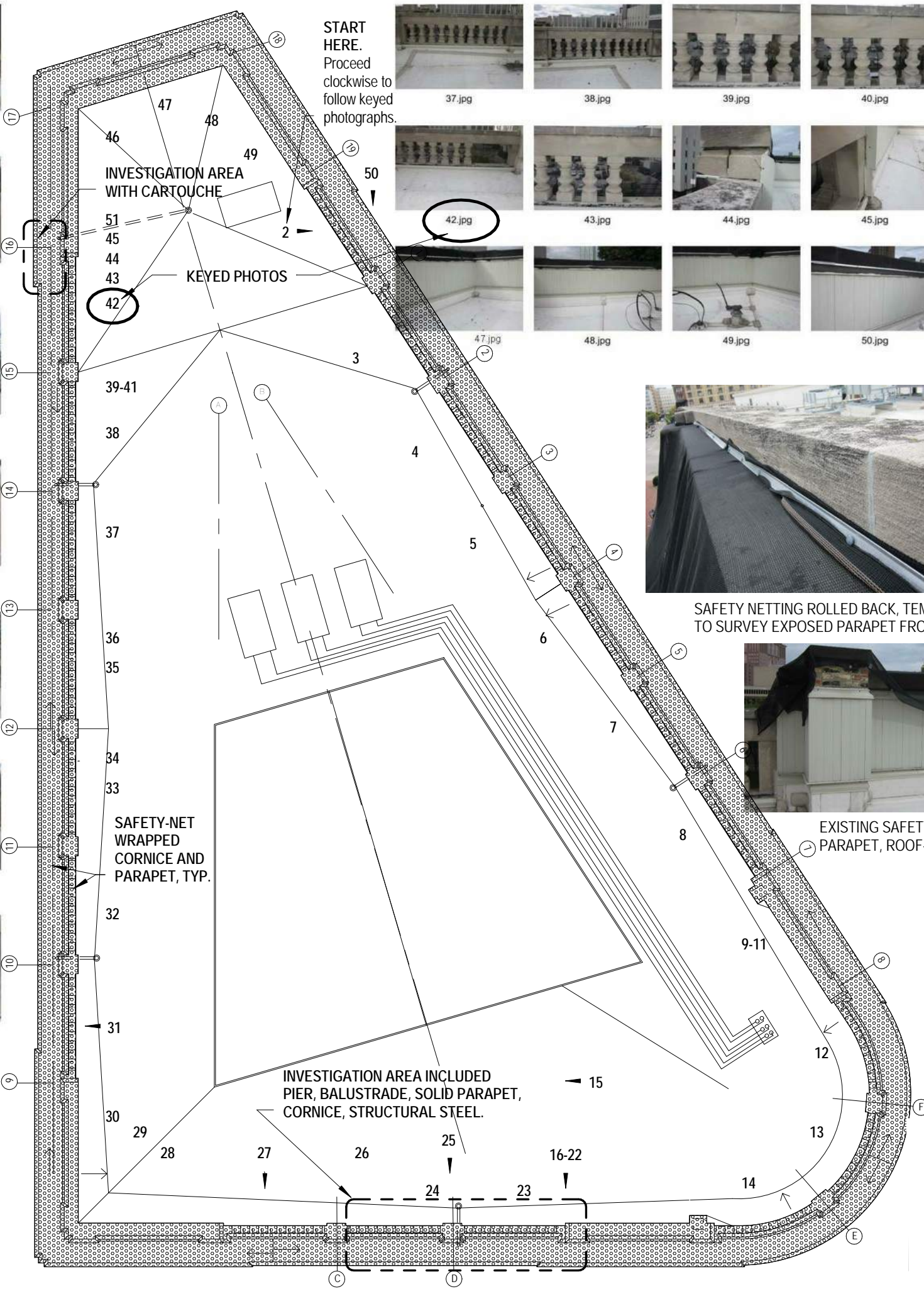




START HERE

START HERE. Proceed clockwise to follow keyed photographs.



SAFETY NETTING ROLLED BACK, TEMPORARILY, TO SURVEY EXPOSED PARAPET FROM ROOF-SIDE.



EXISTING SAFETY NETTING AT SOLID PARAPET, ROOF-SIDE.



NORTH

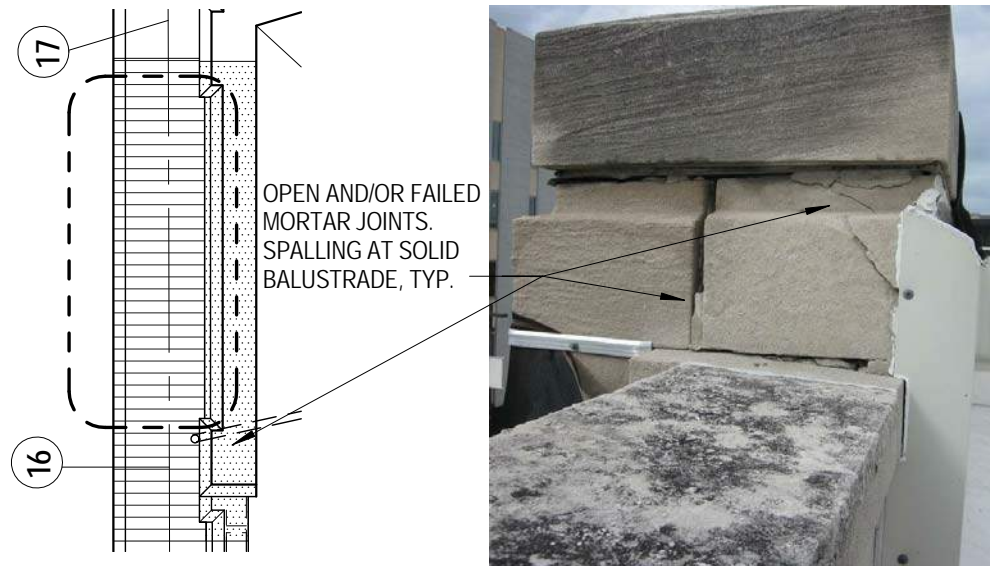
Scale 1/16" = 1'-0"

Drawing No.

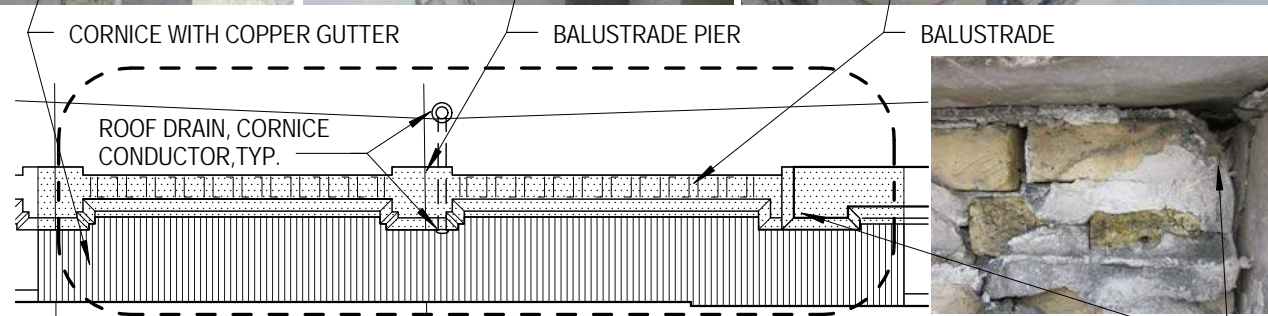
A001



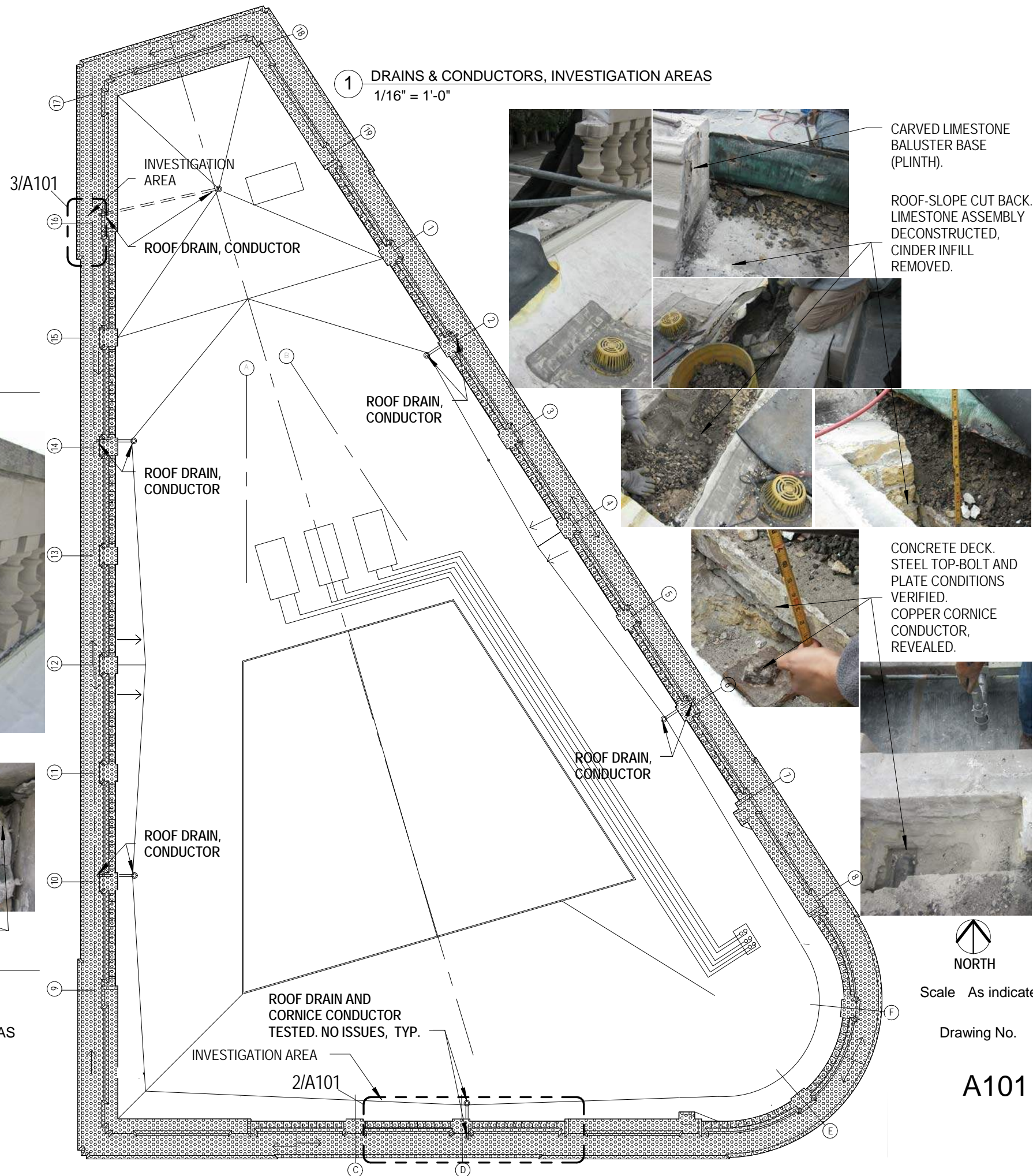
Title PARAPET PLAN - EXISTING CONDITIONS  
 Project MCHS Exterior Renovation Investigative Study  
 910 N. Old World Third St. Milwaukee, WI 53203  
 Project Number Milwaukee County O118-13449; UWA 13-121  
 Drawn by UWA



3 INVESTIGATION AREA - NORTHERN END (3rd St.)  
1/8" = 1'-0"

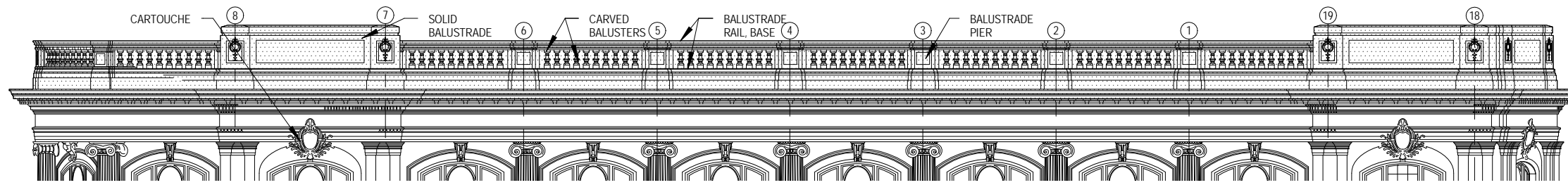


2 INVESTIGATION AREA - SOUTHERN END (Kilbourn Ave.)  
1/8" = 1'-0"



Title ROOFTOP PLAN - DRAINS AND CONDUCTORS, INVESTIGATION AREAS  
 Project MCHS Exterior Renovation Investigative Study  
 Project Number 910 N. Old World Third St. Milwaukee, WI 53203  
 Milwaukee County O118-13449; UWA 13-121  
 Drawn by UWA

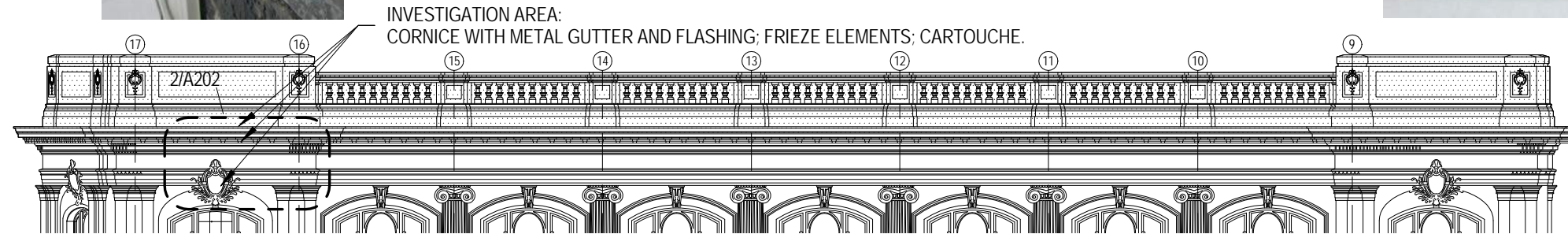
Drawing No.  
**A101**



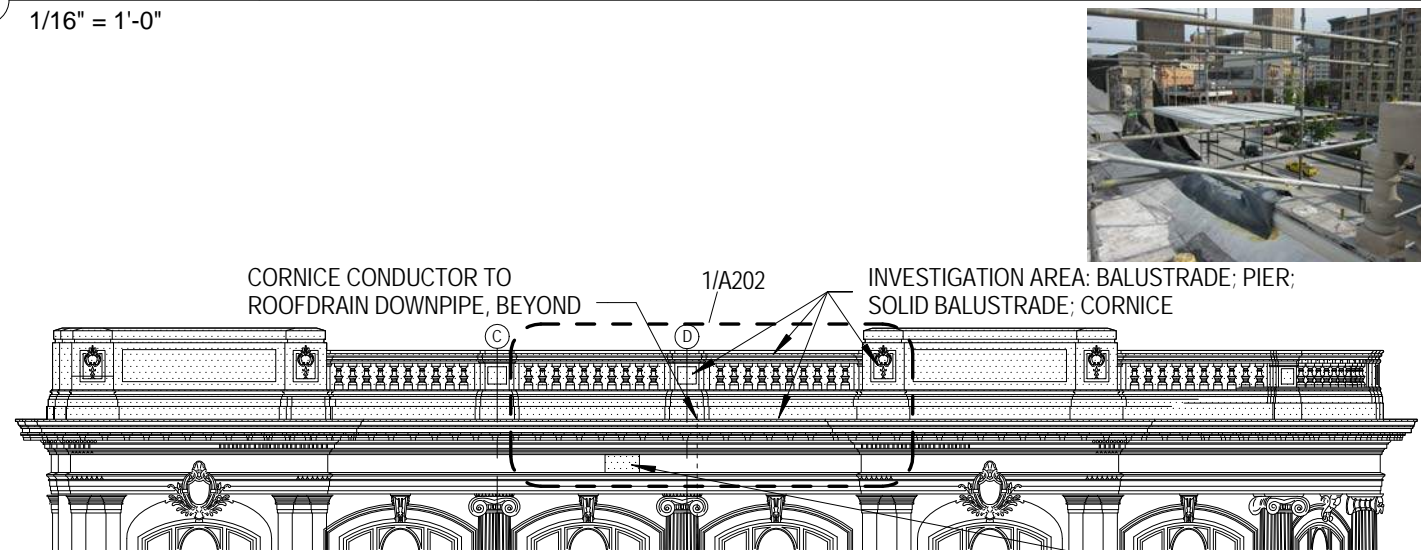
3 EAST - ELEVATION (PARK SIDE)  
1/16" = 1'-0"



REMOVED METAL PANEL AT SOLID BALUSTRADE TO VERIFY CONDITION OF BRICK BACK-UP WALL.  
SPALLED BALUSTRADE BASE, TYP.



2 WEST ELEVATION (OLD WORLD THIRD ST.)  
1/16" = 1'-0"



1 SOUTH ELEVATION (KILBOURN AVE.)  
1/16" = 1'-0"



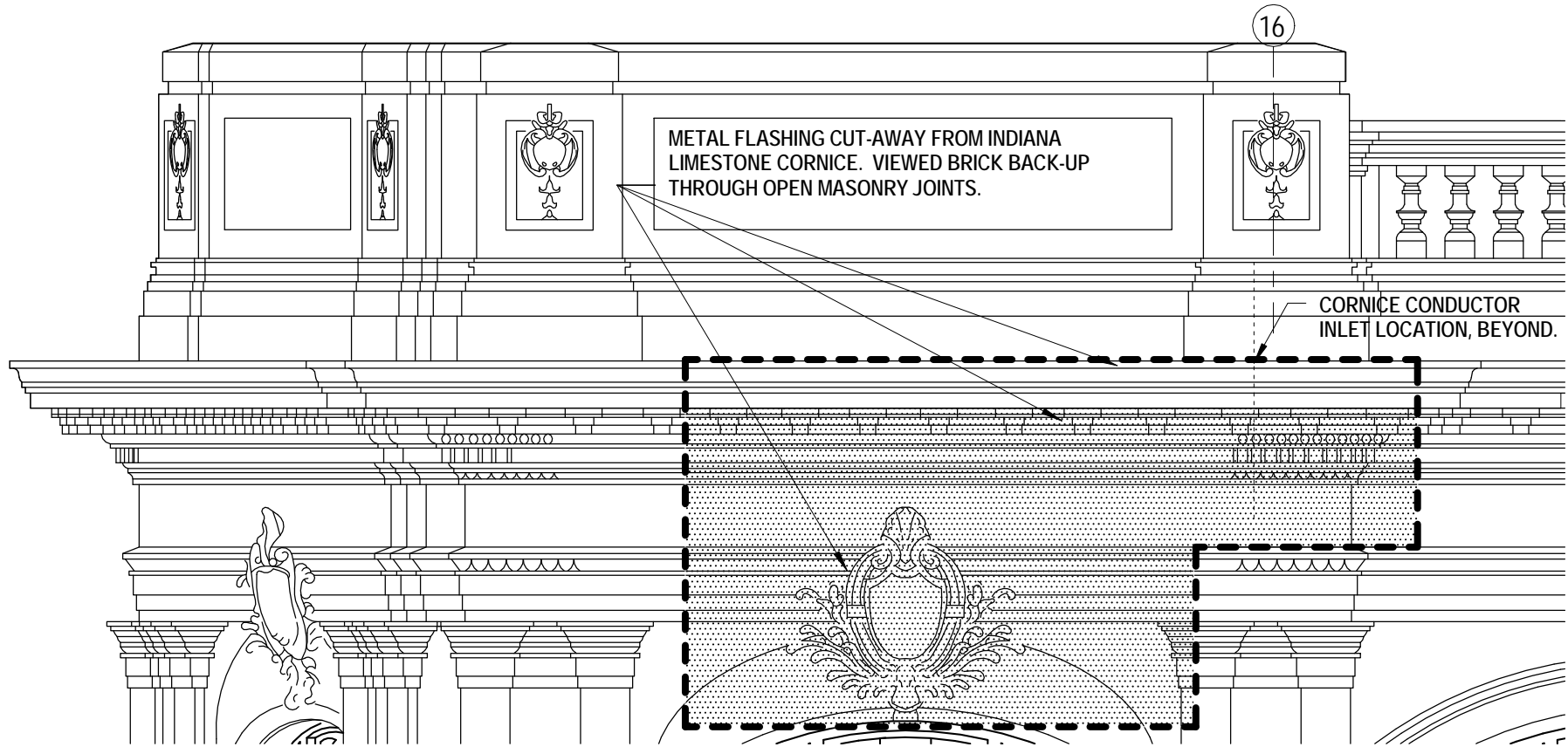
ROTATED FACADE STONE OUTWARD TO VERIFY CONDITION OF STRUCTURAL STEEL CHANNELS, ANCHOR ROD.

<b>PARAPET FACTS</b>	*field verify
<b>PARAPET:</b>	
PERIMETER at cornice edge	487 ft.*
PERIMETER at parapet edge	461 ft.*
BALUSTRADE	330 ft.*
BALUSTRADE, SOLID	131 ft.*
BALUSTRADE BAYS	20
CARVED BALUSTERS	10 per bay
BALUSTRADE PIERS	16
<b>CARTOUCHE UNITS:</b>	
NORTH ELEVATION	1 location
EAST ELEVATION	2 locations
WEST ELEVATION	2 locations
<u>SOUTH ELEVATION</u>	<u>2 locations</u>
TOTAL	7
<b>LIMESTONE:</b>	
INDIANA LIMESTONE - COLOR: BUFF; GRADE: SELECT	
<b>METAL:</b>	
PINS, STRAP ANCHORS: MILD STEEL (EXISTING)	
PINS, STRAP ANCHORS, RODS: SS (PROPOSED)	
FLASHING: GALVANIZED STEEL; ALUMINUM (EXISTING)	
FLASHING: Z-T ALLOY COATED COPPER (PROPOSED)	
<b>CORNICE GUTTER AND FLASHING:</b>	
COPPER, (EXISTING)	
ZINC-TIN ALLOY COATED COPPER (PROPOSED)	
<b>CORNICE CONDUCTOR:</b>	
COPPER. SHEATHED IN 1989	
<b>ROOF DRAINS - CAST IRON. INSTALLED IN 2010</b>	
<b>ROOF DRAIN DOWNPIPES - CAST IRON, 4" diam. ORIGINAL</b>	



Title BUILDING ELEVATIONS AT PARAPET  
 Project MCHS Exterior Renovation Investigative Study  
 910 N. Old World Third St. Milwaukee, WI 53203  
 Project Number Milwaukee County O118-13449; UWA 13-121  
 Drawn by UWA

Scale 1/16" = 1'-0"  
 Drawing No.  
**A201**



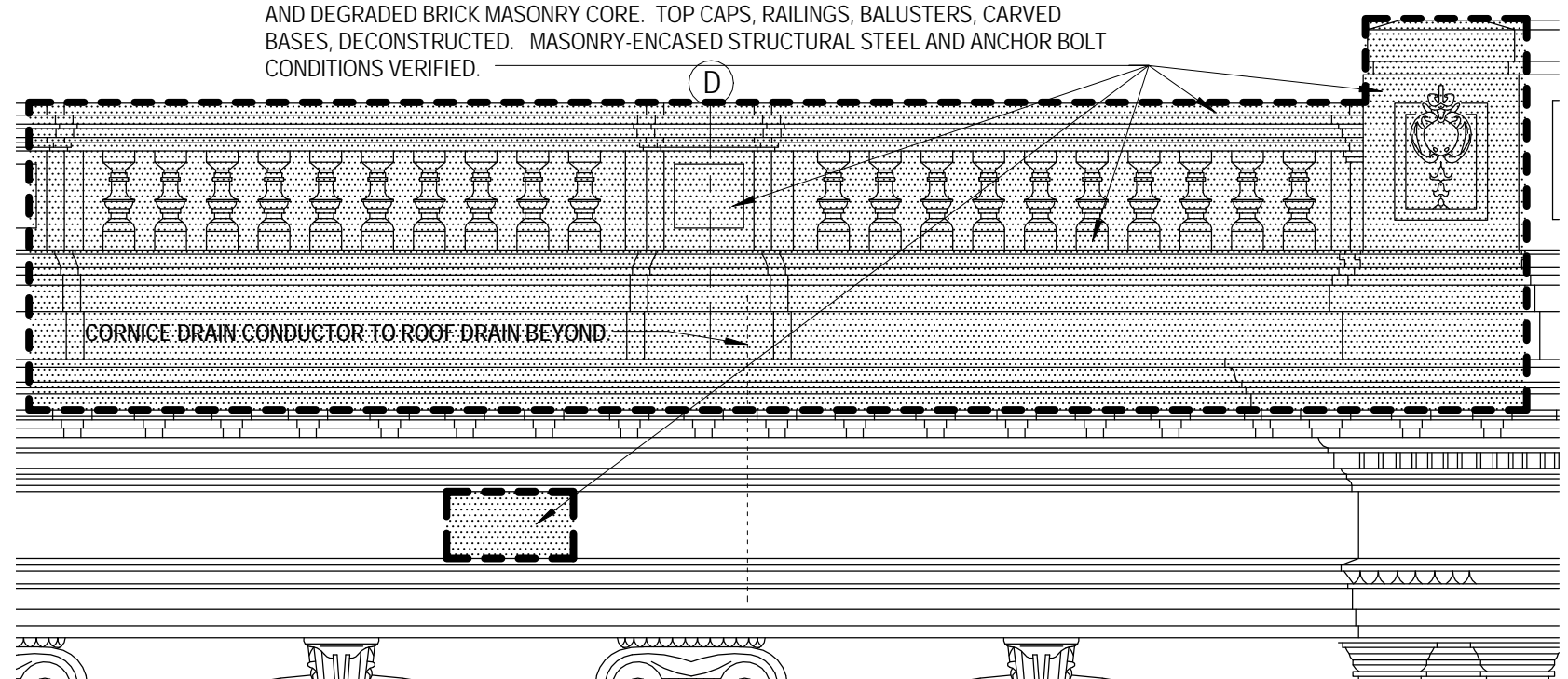
COPPER GUTTER REMOVED. REVEALED WET LIMESTONE CORNICE AND THE SEVERELY-SPALLED EDGE. PAST MAINTENANCE HAD PATCHED AND PAINTED THE CORNICE EDGE.

CONSTANT DRIPPING OF LONG-STANDING WATER IN CORNICE GUTTER. EVIDENCE OF SEEPAGE INTO LIMESTONE MASONRY WALL ASSEMBLY.

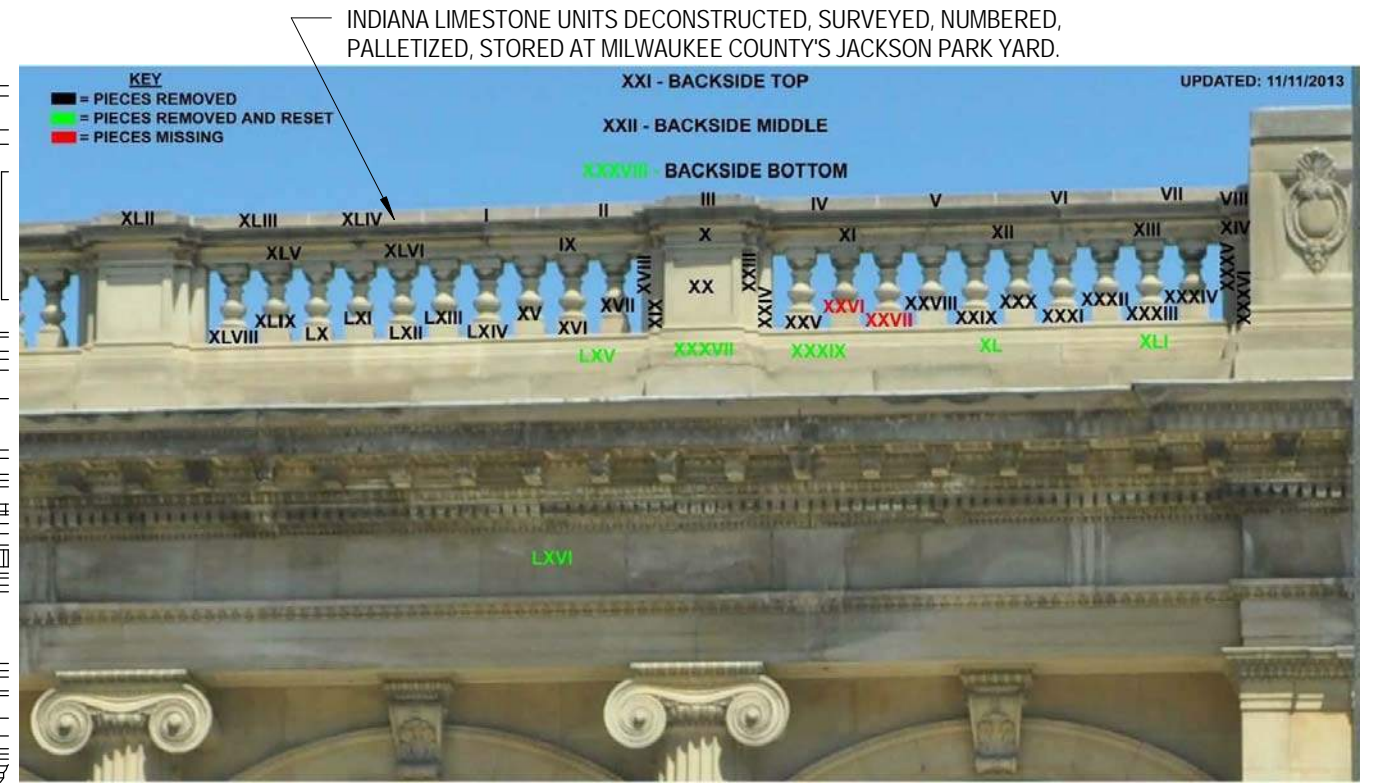


2 WEST ELEVATION - INVESTIGATION AREA  
1/4" = 1'-0"

INDIANA LIMESTONE CLADDING PARTIALLY DECONSTRUCTED AT SOLID BALUSTRADE. BALUSTRADE PIER ASSEMBLY DECONSTRUCTED. FOUND CORRODED STRAP ANCHORS AND DEGRADED BRICK MASONRY CORE. TOP CAPS, RAILINGS, BALUSTERS, CARVED BASES, DECONSTRUCTED. MASONRY-ENCASED STRUCTURAL STEEL AND ANCHOR BOLT CONDITIONS VERIFIED.



1 SOUTH ELEVATION - INVESTIGATION AREA  
1/4" = 1'-0"

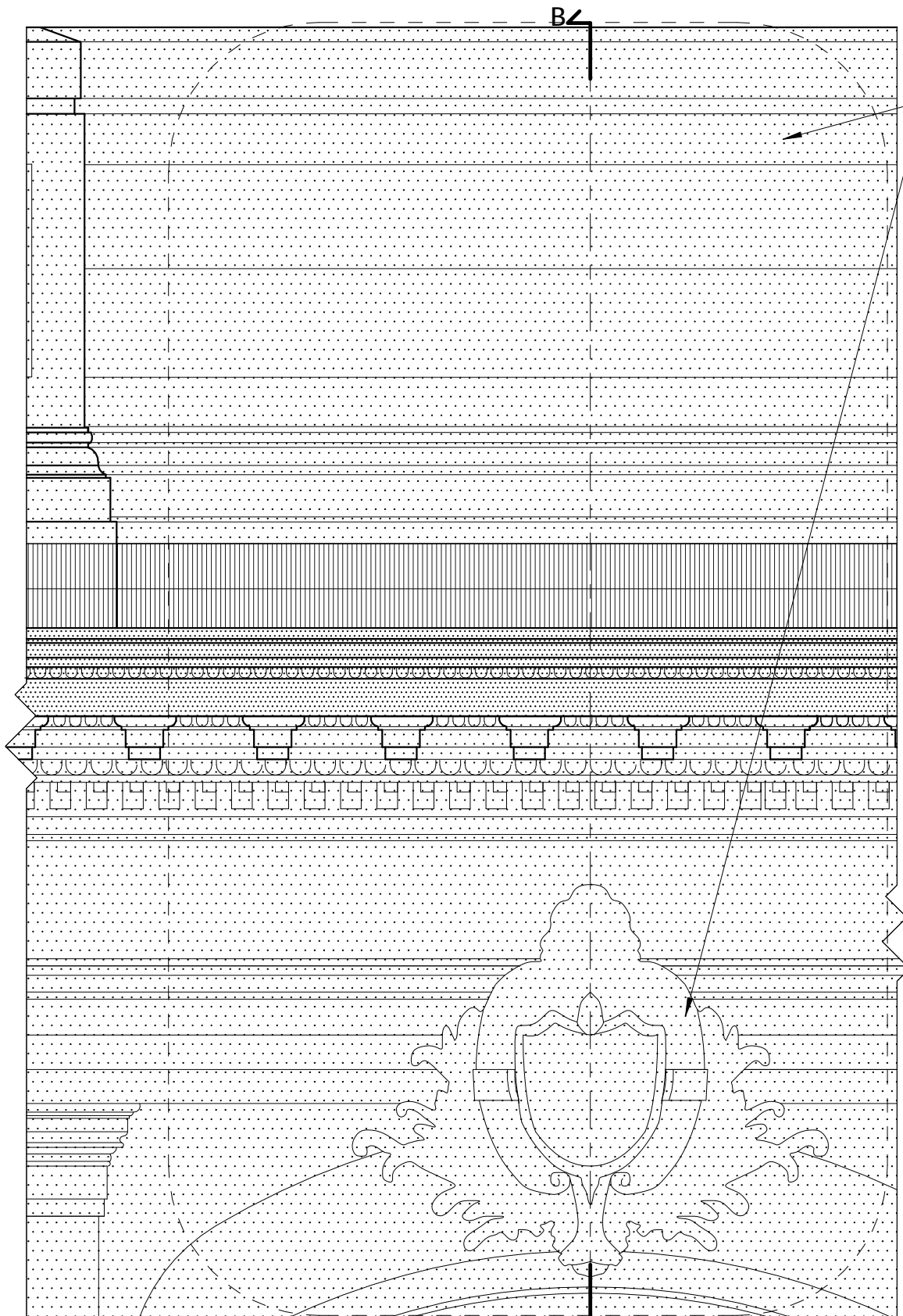


Scale 1/4" = 1'-0"



Title PARAPET ELEVATION DETAILS - AREAS OF INVESTIGATION  
 Project MCHS Exterior Renovation Investigative Study  
 910 N. Old World Third St. Milwaukee, WI 53203  
 Project Number Milwaukee County O118-13449; UWA 13-121  
 Drawn by UWA

Drawing No.  
A202



1 SECTION AT SOLID BALUSTRADE, TYP.

1/2" = 1'-0"

AREA OF INTERVENTION FOR DECONSTRUCTION AND REBUILD OF SOLID BALUSTRADE, CORNICE, BRICK BACK-UP WALL, CARTOUCHE KEYSTONE UNITS. RE-ALIGN DISPLACED UNITS.

REMOVE, REPLACE CONTINUOUS METAL FLASHING AT TOP CAPS, TYP. NEW SS PINS WITH SEALANT/MASTIC. REPOINT ALL DETERIORATED MORTAR JOINTS.

STANDARD METAL PANEL TO REMAIN. VERIFY AIR CIRCULATION.

EXISTING EPDM MEMBRANE ROOFING SYSTEM.

EXISTING LIMESTONE CORNICE EDGE CONDITION. WATER INFILTRATION AT COMMON BRICK BACK-UP WALL.

CARVED LIMESTONE UNITS TO BE CLEANED OF EFFLORESCENCE AND DIRT AND GRIME, TYP.

WORST-CASE CONDITION AT ONE OF SEVEN CARTOUCHE LOCATIONS. KEYSTONE UNITS SHIFTED DOWN AND OUT OF PLANAR ALIGNMENT.

3/A401

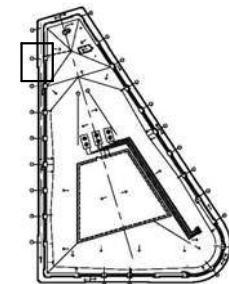
SECTION B - B



Scale 1/2" = 1'-0"

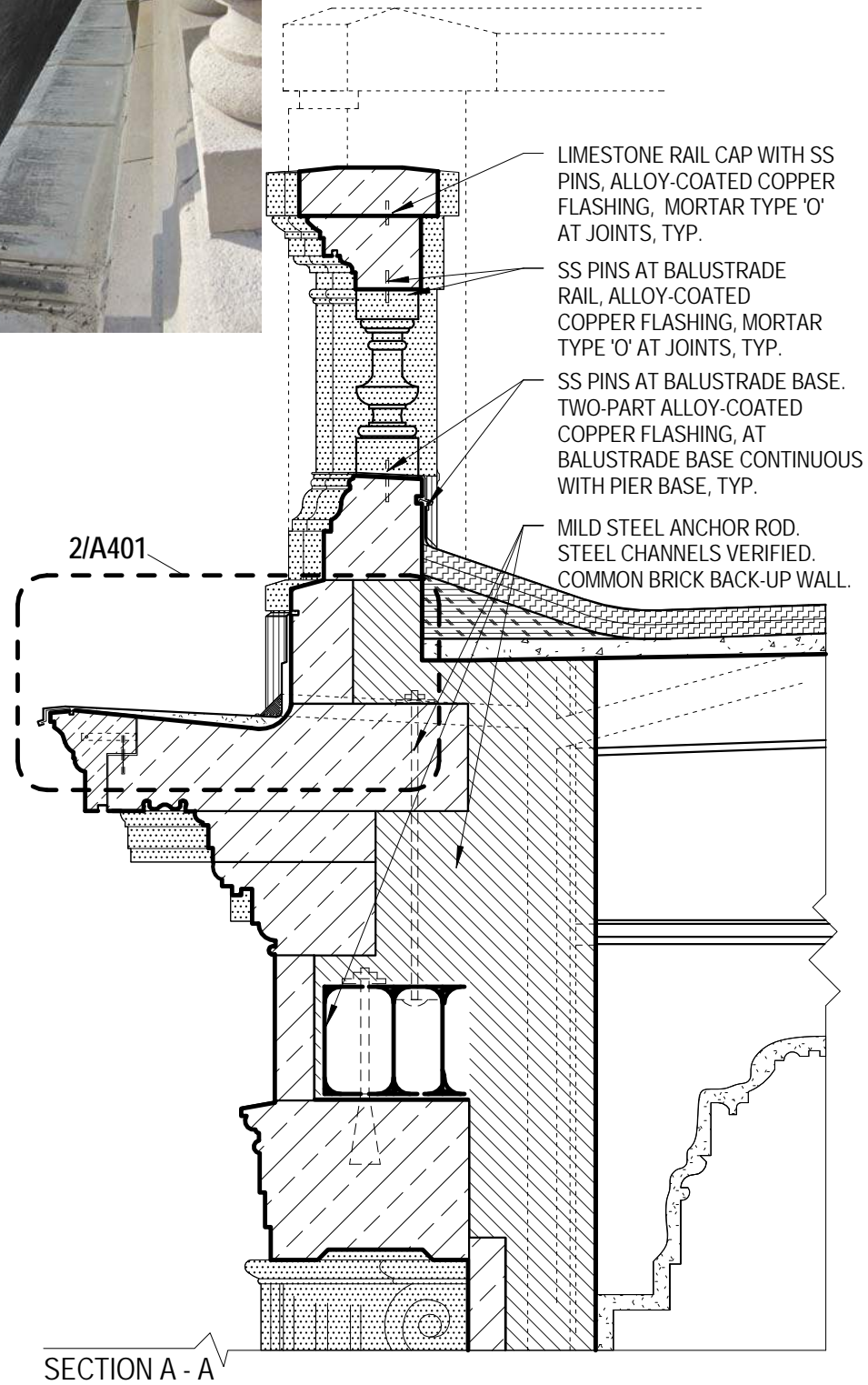
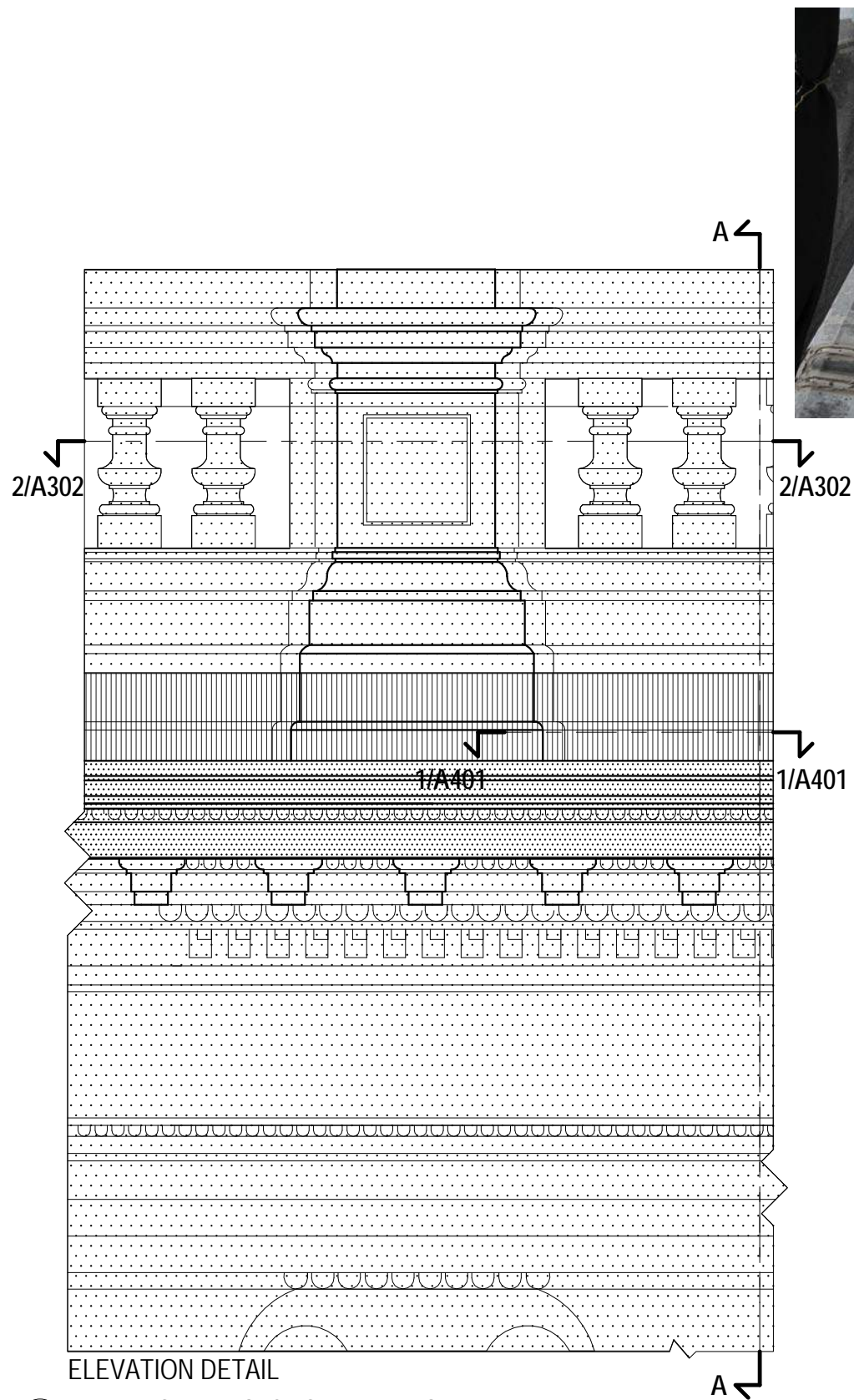


Title SECTION AT SOLID BALUSTRADE WITH CARTOUCHE, TYP.  
 Project MCHS Exterior Renovation Investigative Study  
 910 N. Old World Third St. Milwaukee, WI 53203  
 Project Number Milwaukee County O118-13449; UWA 13-121  
 Drawn by UWA



Drawing No.

A301



BALUSTRADE RAIL WITH SS PINS, METAL FLASHING, MORTAR JOINTS. SS PINS, METAL FLASHING AT BALUSTRADE BASE.



BALUSTRADE SILL/BASE CONDITION, TYP.



CORRODED MILD STEEL PINS AT BALUSTRADE BASE AND RAIL.

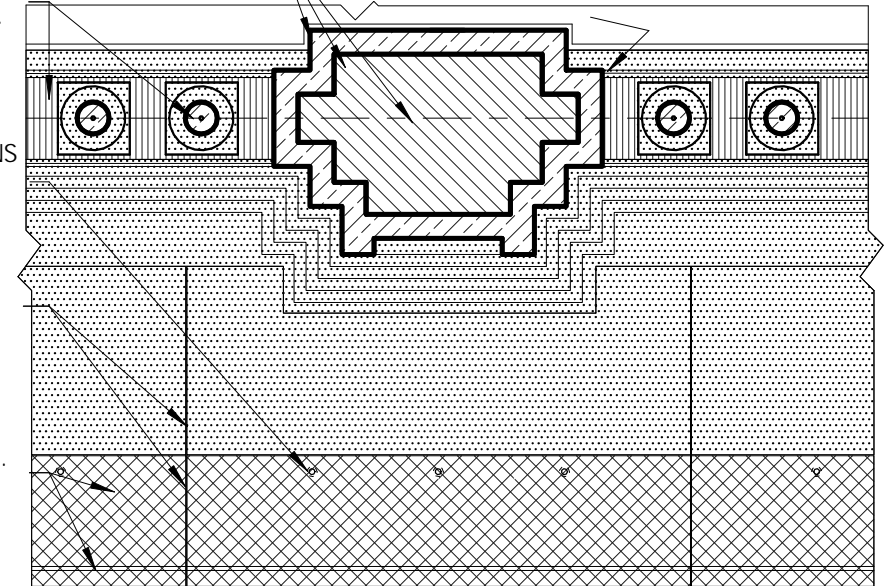
CORE-OUT CORRODED BALUSTER PINS AT RAIL AND BASE. PROVIDE SS PINS, METAL FLASHING, SEALANT/MASTIC, TYP.

SS THREADED PINS AT QUARTERS, MORTAR SET.

MATCH JOINT WIDTHS. MORTAR TYPE 'O'.

LIMESTONE DUTCHMAN TO MATCH EXISTING CORNICE LENGTH. PRE-CUT REGLET FOR METAL FLASHING DRIP EDGE.

DECONSTRUCT STONE-FACED PIER. PROVIDE SS STRAP ANCHORS, REBUILD COMMON BRICK CORE. METAL FLASHING AT BASE ALIGNED WITH BALUSTRADE BASE FLASHING, TYP.



BALUSTERS, PIER, EXPOSED CORNICE W/STONE DUTCHMAN - PLAN DETAIL

1 ELEVATION AND SECTION AT BALUSTRADE, TYP. 1/2" = 1'-0"

2 1/2" = 1'-0"

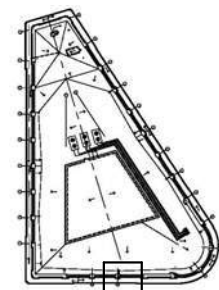
Scale 1/2" = 1'-0"

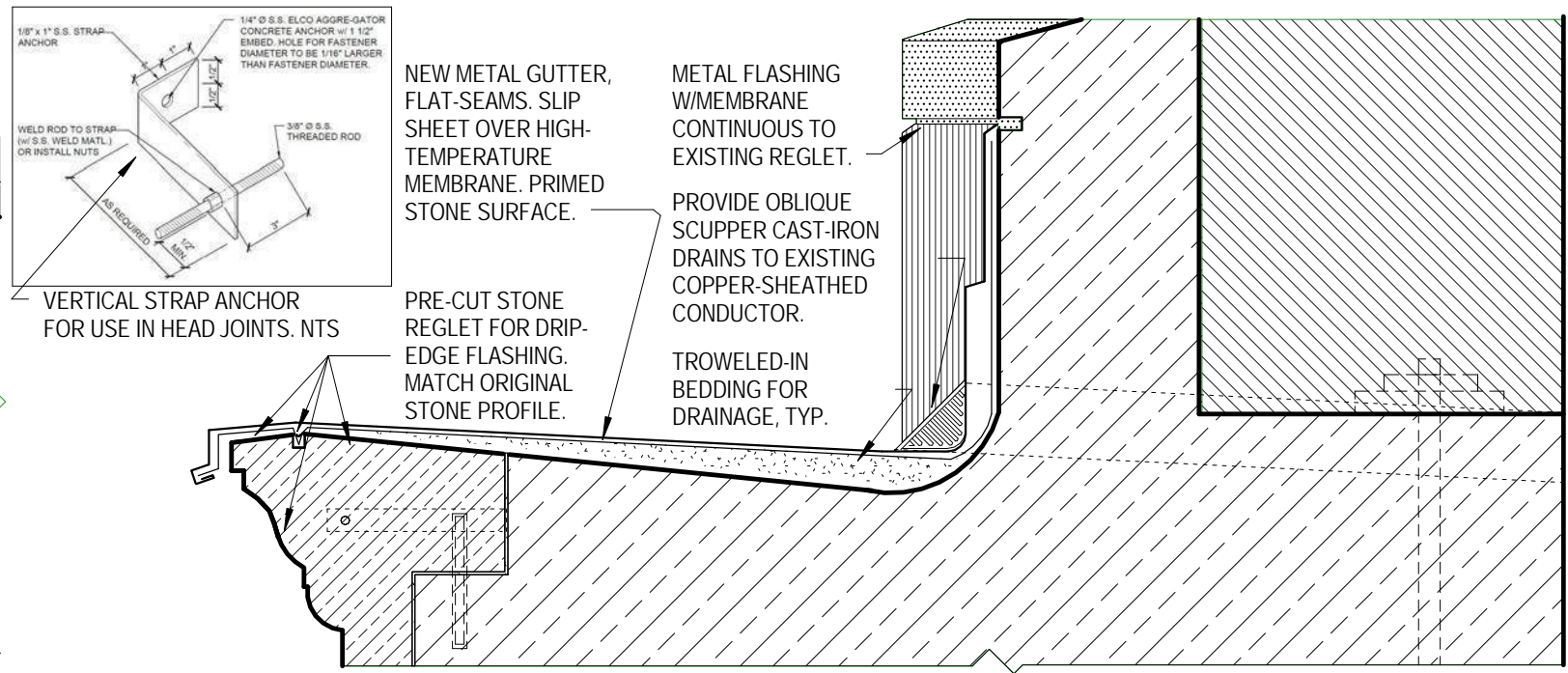
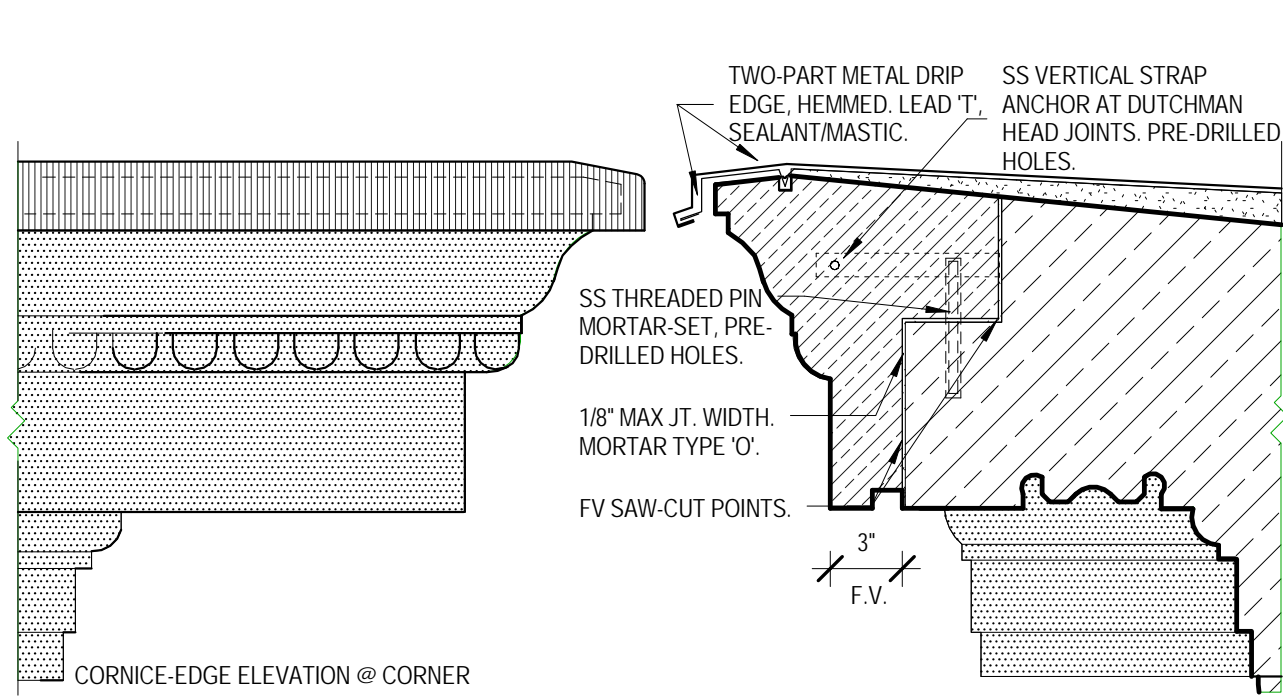


Title SECTION, PLAN AT BALUSTRADE WITH PIER, TYP.  
 Project MCHS Exterior Renovation Investigative Study  
 910 N. Old World Third St. Milwaukee, WI 53203  
 Project Number Milwaukee County O118-13449; UWA 13-121  
 Drawn by UWA

Drawing No.

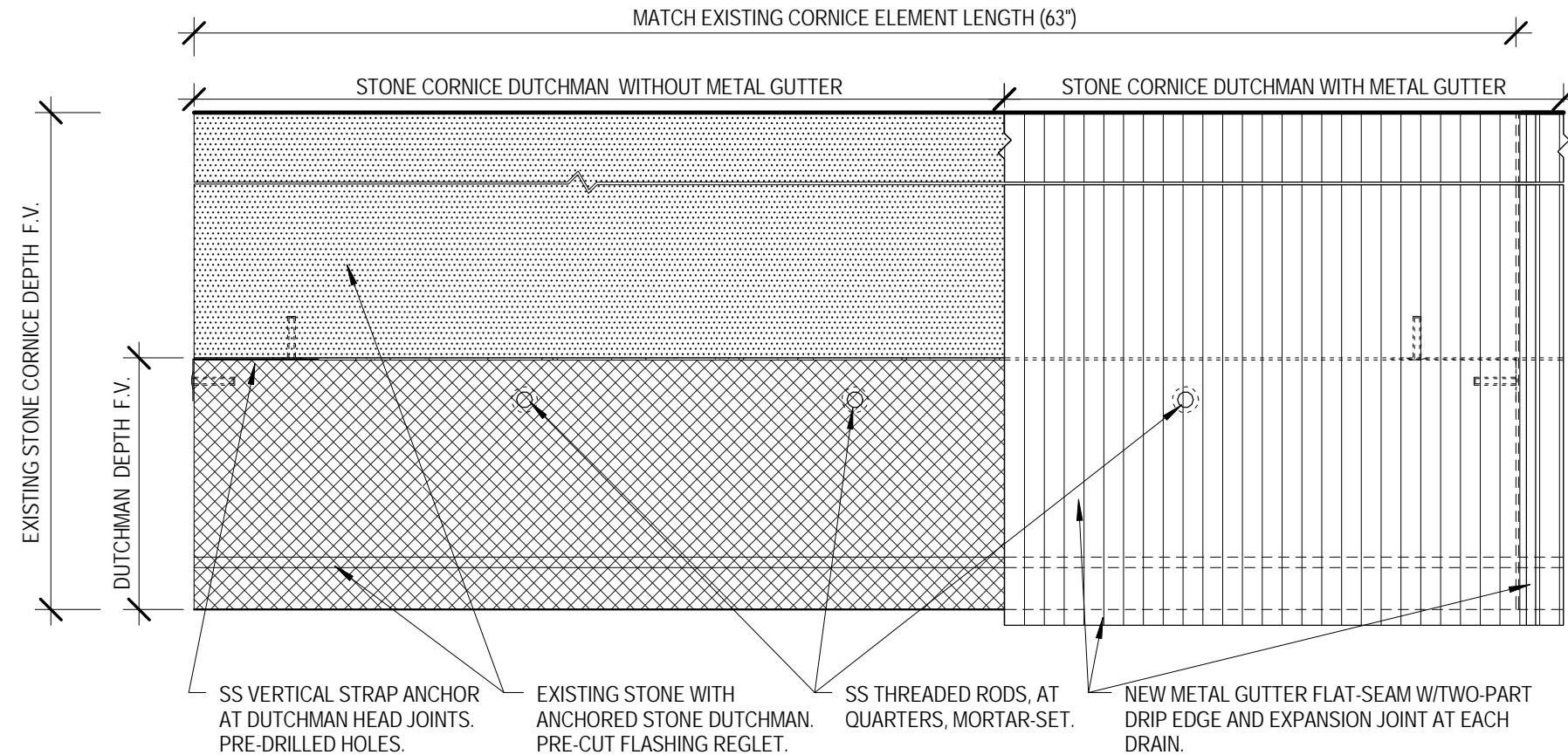
A302



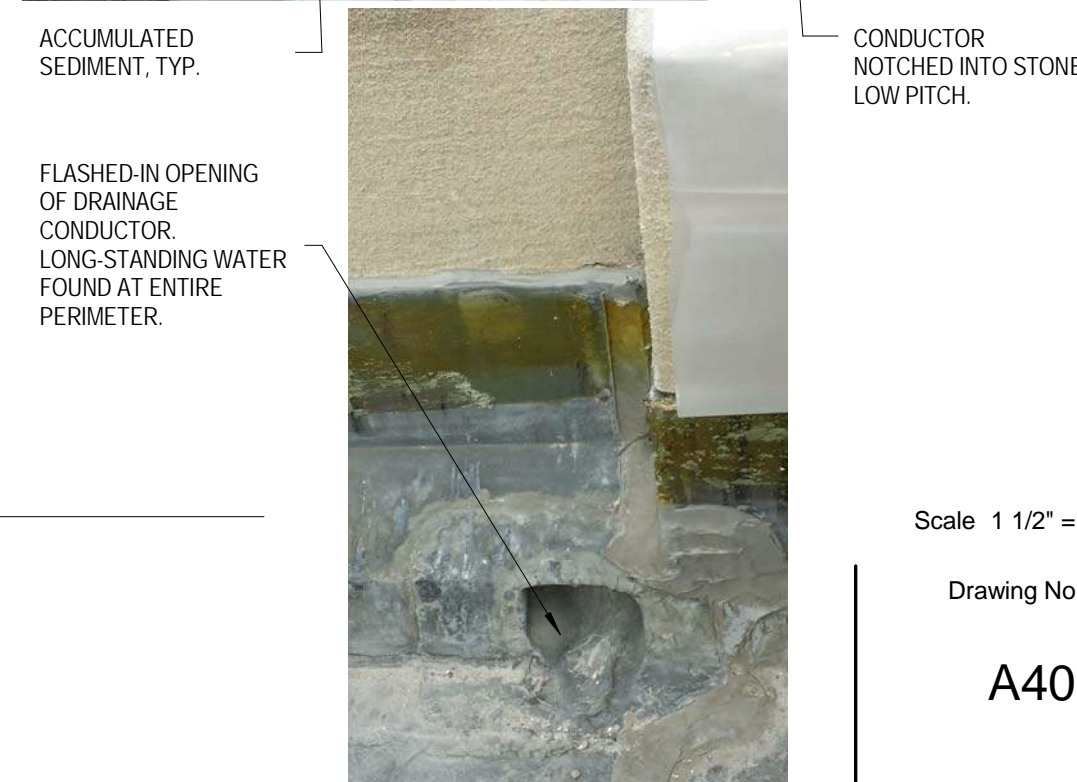


3 CORNICE DUTCHMAN - SECTION DETAIL  
1 1/2" = 1'-0"

2 CORNICE FLASHING, DRAIN - SECTION DETAIL  
1 1/2" = 1'-0"



1 CORNICE DUTCHMAN - WITHOUT AND WITH COPPER ALLOY GUTTER - PLAN DETAIL  
1 1/2" = 1'-0"



Scale 1 1/2" = 1'-0"

Drawing No.

A401

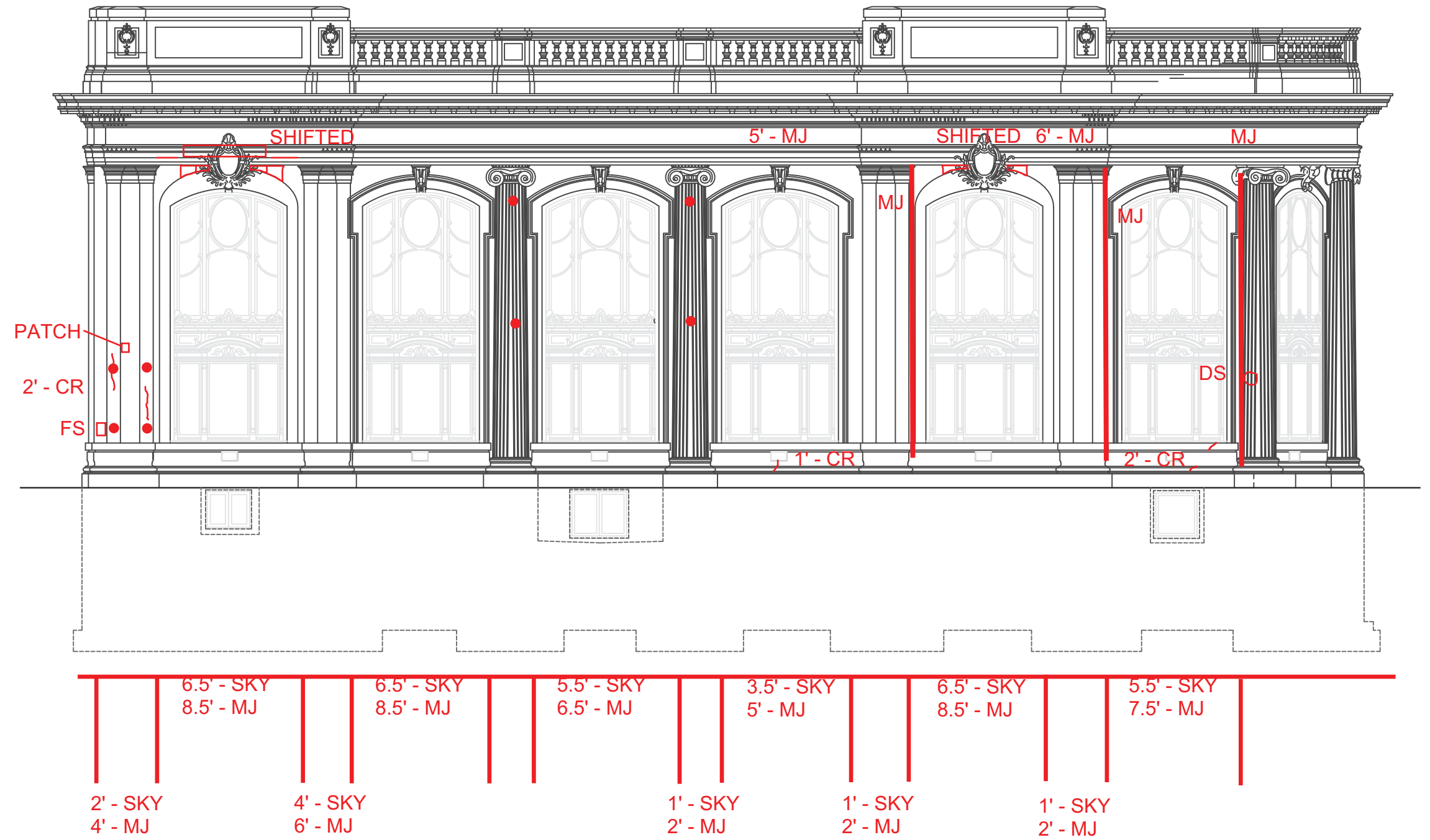


Title DUTCHMAN AT CORNICE - PLAN, SECTION DETAILS  
 Project MCHS Exterior Renovation Investigative Study  
 910 N. Old World Third St. Milwaukee, WI 53203  
 Project Number Milwaukee County O118-13449; UWA 13-121  
 Drawn by UWA

# Kilbourn St. Elevation (SOUTH)

## DRAWING KEY :

- FS = FLAT SPALL
- DS = DECORATIVE SPALL
- MJ = CRACKED MORTAR JOINT
- SKY = SKYWARD FACING JOINT
- CR = CRACK IN LIMESTONE
- = ATTACHMENT LOCATION





# 3rd Street Elevation (WEST)

## DRAWING KEY :

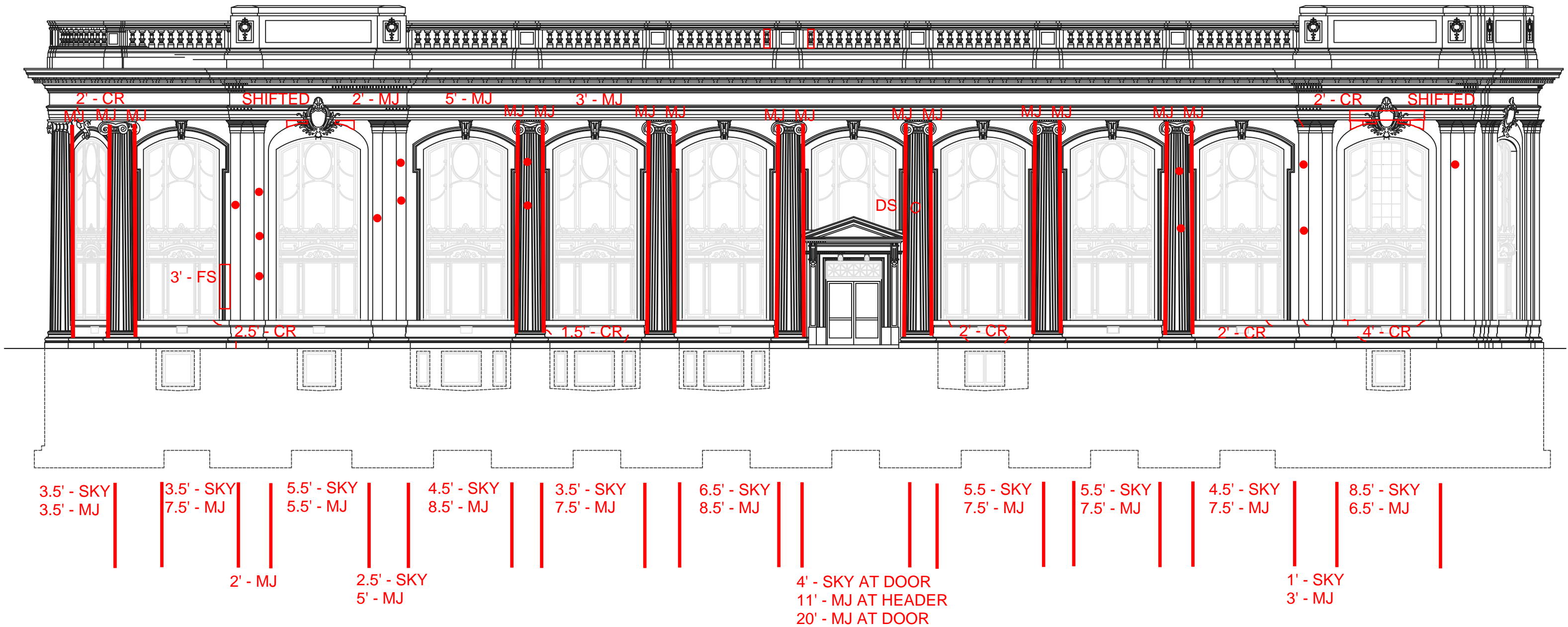
- FS = FLAT SPALL
- DS = DECORATIVE SPALL
- MJ = CRACKED MORTAR JOINT
- SKY = SKYWARD FACING JOINT
- CR = CRACK IN LIMESTONE
- = ATTACHMENT LOCATION



# Pere Marquette Park Elevation (EAST)

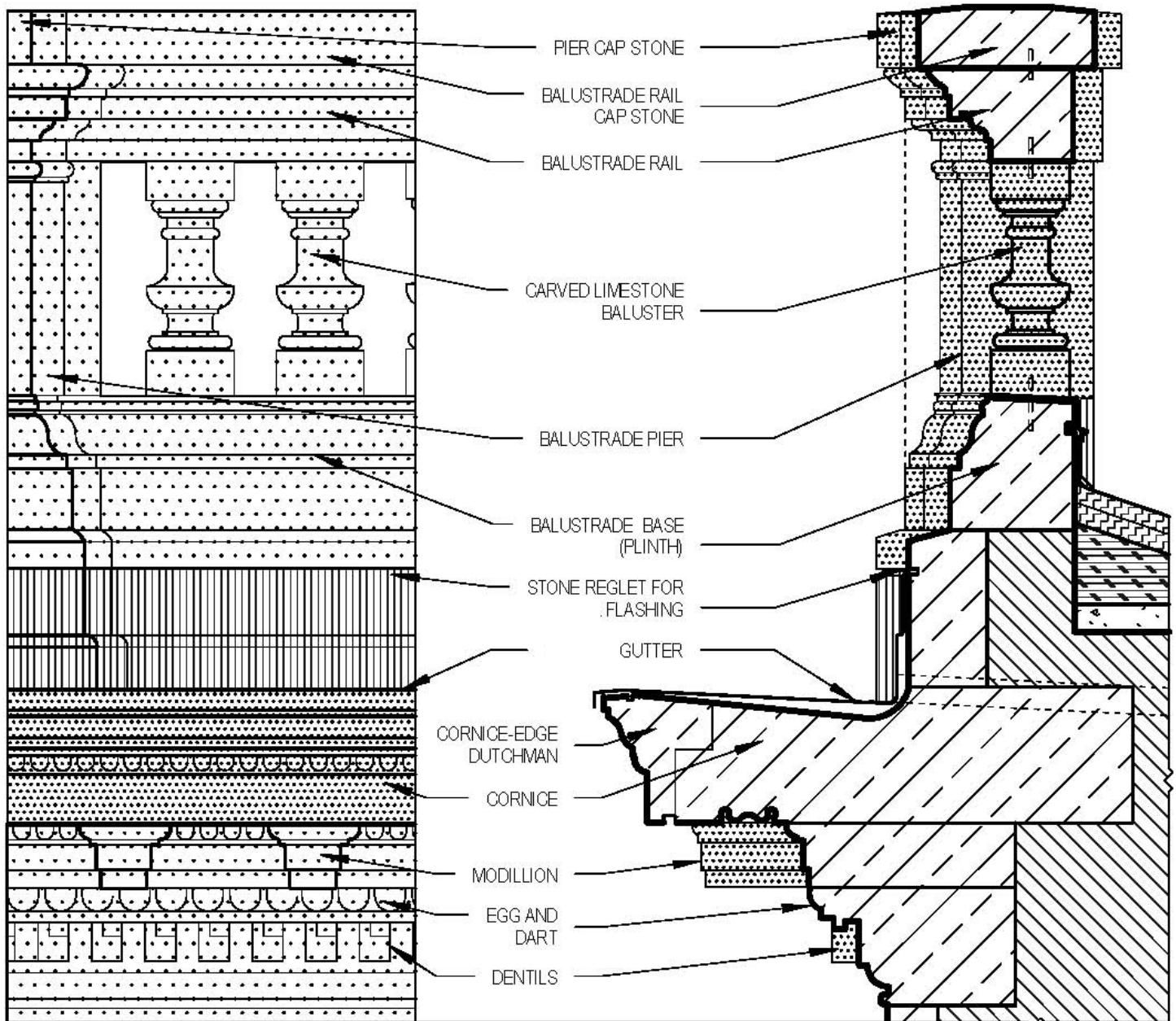
## DRAWING KEY :

- FS = FLAT SPALL
- DS = DECORATIVE SPALL
- MJ = CRACKED MORTAR JOINT
- SKY = SKYWARD FACING JOINT
- CR = CRACK IN LIMESTONE
- = ATTACHMENT LOCATION



## Glossary of Terms – Limestone Units

Inspired by the Petit Trianon (on the grounds of the Palace of Versailles in France) this building was designed by Architects Charles Kirchoff and Thomas Leslie Rose. The construction was completed in 1913. In 1973, the building was registered by National Park Service. The terminology of the classical façade units of carved and structural Indiana limestone is illustrated here.



# National Register of Historic Places



HOME
EURZ VH#
DGYDQFHG #VHDFK#
GRZ QORDG #FHQWHU#
DERXW#
VWDWXV#
KHOS#

- Contact Us**
- Find A Park**
- History & Culture**
- Nature & Science**
- Education & Interpretation**

**FULL RECORD DISPLAY**

**Current Record:** 1 of 1 in NPS Digital Library

[Go back to: Title List](#) | [Revise Search](#)



**DjVu browser plugin1**

1. Choose the option for Autoinstallation
2. takes about 20 seconds
3. About [DjVu](#) and [plugin help](#)

Choose format:

[Begin DjVu install](#)

[JPG](#) | [DjVu](#)



**DjVu browser plugin1**

1. Choose the option for Autoinstallation
2. takes about 20 seconds
3. About [DjVu](#) and [plugin help](#)

Choose format:

[Begin DjVu install](#)

[JPG](#) | [DjVu](#)

## Milwaukee County Historical Center [Image]

**URL:** <http://pdfhost.focus.nps.gov/docs/NRHP/Text/73000086.pdf>

Olqn#z I#k:shq#lq#l#qhz #eurz vhu#z lqgrz

**URL:** <http://pdfhost.focus.nps.gov/docs/NRHP/Photos/73000086.pdf>

Olqn#z I#k:shq#lq#l#qhz #eurz vhu#z lqgrz

**Publisher:** National Park Service

**Published:** 03/14/1973

**Access:** Public access

**Restrictions:** All Rights Reserved

**Format/Size:** Physical document with text, photos and map

**Language:** eng: English

**Note:** 910 N. 3rd St.

**Item No.:** 73000086 *NRIS (National Register Information System)*

**Subject:** **EVENT**

**Subject:** **ARCHITECTURE/ENGINEERING**

**Subject:** **ARCHITECTURE**

**Subject:** **COMMERCE**

**Subject:** **RENAISSANCE**

**Subject:** **BUILDING**

**Subject:** **1900-1924**

**Keywords:** Kirchoff,Charles;Rose,Thomas Leslie;1911;1913

**Place:** WISCONSIN -- Milwaukee County -- Milwaukee

**Record Number:** 363862

**Record Owner:** National Register of Historic Places

[Freedom of Information Act](#)

[Privacy Policy](#)

[Disclaimer](#)

[Accessibility](#)

#Odv#xsgdwhg=#3 : 24 9 24 6 #

: 6 #

<http://nrhp.focus.nps.gov/natregsearchresult.do?fullresult=true&recordid=129>