






**FNs 111711 and 111712  
8th Amendment to GPD  
3rd Amendment to DPD  
May 2012**

 Proposed Zoning Change


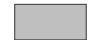

**Residential Districts**

-  Single Family (RS1-6)
-  Two-Family (RT1-4)
-  Multi-Family (RM1-7)
-  Residential and Office (RO1-2)

**Commercial Districts**

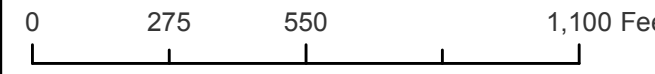
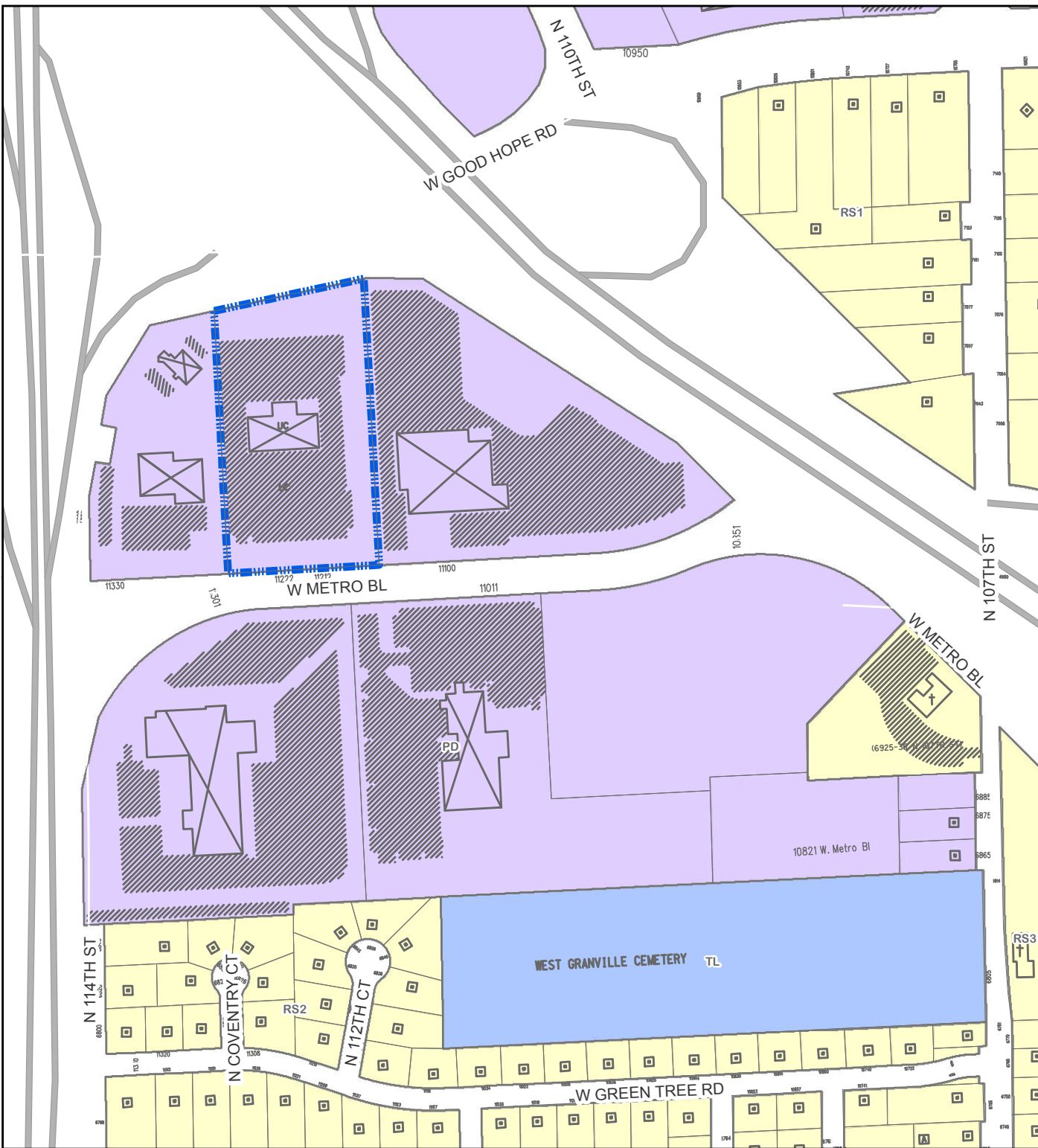
-  Neighborhood Shopping (NS1-2)
-  Local Business (LB1-2)
-  Commercial Service (CS)
-  Regional Business (RB1-2)
-  Central Business (C9A-C9H)

**Industrial Districts**

-  Industrial - Office (IO)
-  Industrial - Light (IL1-2)
-  Industrial - Mixed (IM)
-  Industrial - Heavy (IH)

**Special Districts**

-  Parks (PK)
-  Institutional (TL)
-  Planned Development (PD, DPD)
-  Redevelopment (RED)



Data source: Department of City Development 2012