

S.W. 32-7-22  
ATLAS P. 332

432

432-30

WALKER'S POINT ADDITION

SCALE 50 FT. = 1 INCH



W. NATIONAL AVE. 1039 1037 1035 1033 1031 1029 1027 1025 1021 1019 1017 1015 1013 1011 1007 1003

S.T.

808

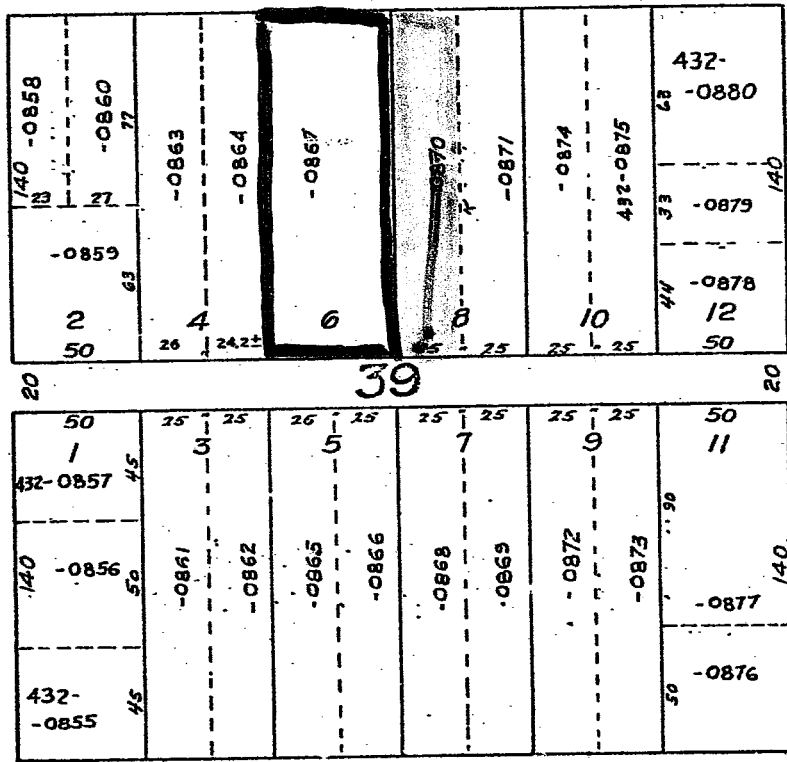
812  
814

S. 11TH

824

828

836



S.T.

809

815

823-7

S. 10TH

837

1032 1028 1024 1022 1016 1018 1014 1010 1008 W. WALKER ST.

MICROFILMED

157  
206  
10