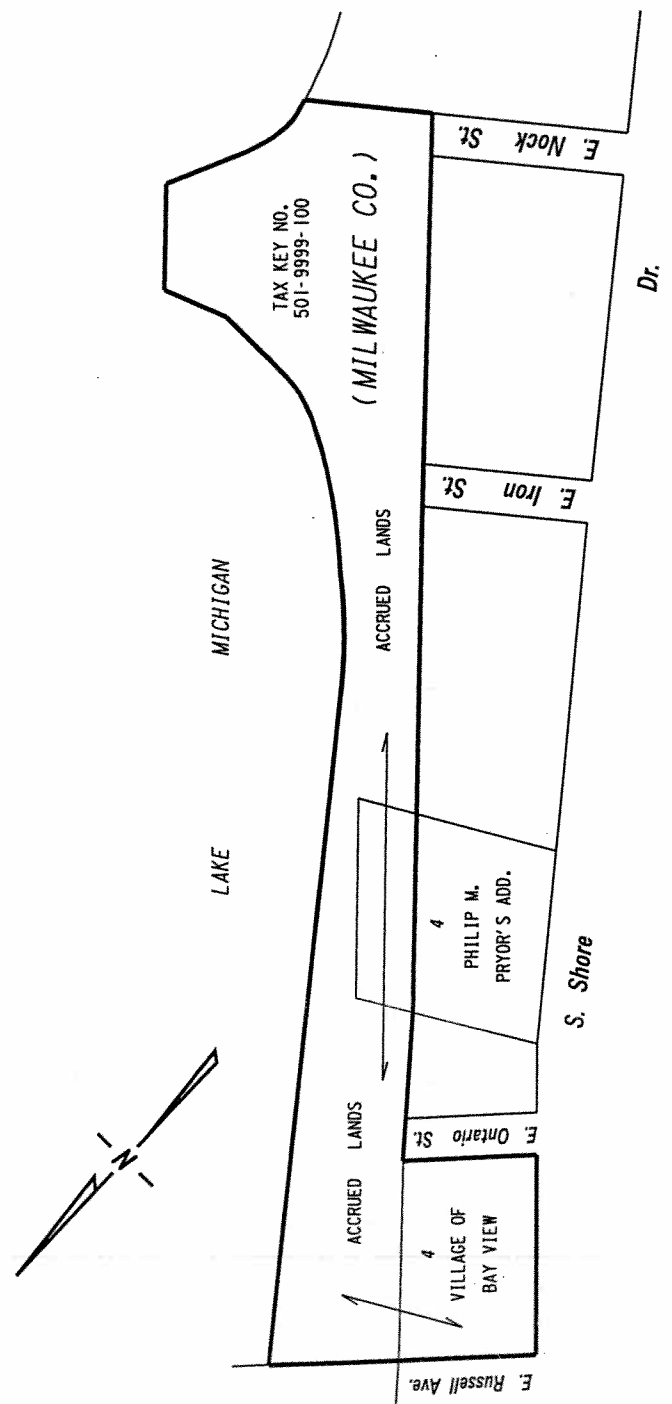
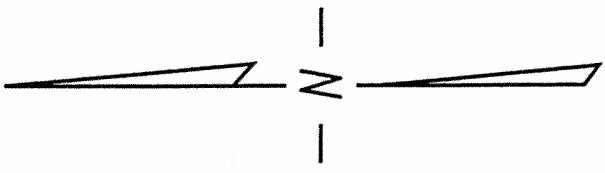
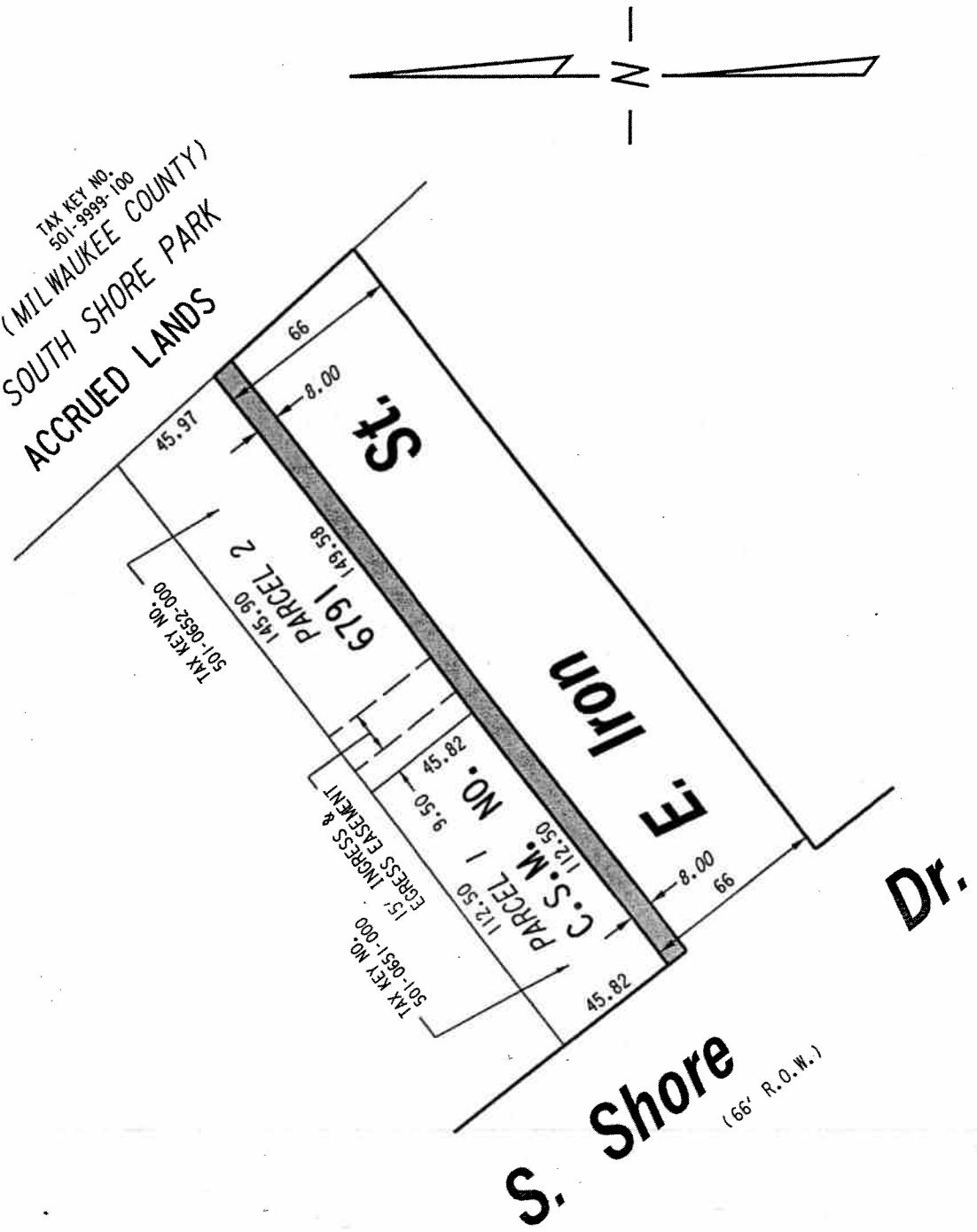


N.W. 1/4 SEC. 10, T.6N., R.22E.

501



TAX KEY NO. 501-9999-100
 (MILWAUKEE COUNTY)
 SOUTH SHORE PARK
 ACCRUED LANDS



PORTION OF PUBLIC STREET PROPOSED TO BE VACATED

EXHIBIT "A"
 FILE NO. 080147

INFRASTRUCTURE SERVICES DIVISION
 MILWAUKEE, WISCONSIN

ASSIGNED TO: W.E. FUCHS
 DRAWN BY: W.E.F.
 PROJECT/GRANT NO.: WK52337264
 APPROVED BY:

CH'K'D. BY: W.E. FUCHS
 DATE: JUNE 23, 2008
 SCALE: 1" = 60'

Maxine Lindholm
 CENTRAL DRAFTING & RECORDS MANAGER

John P. ...
 CITY ENGINEER