

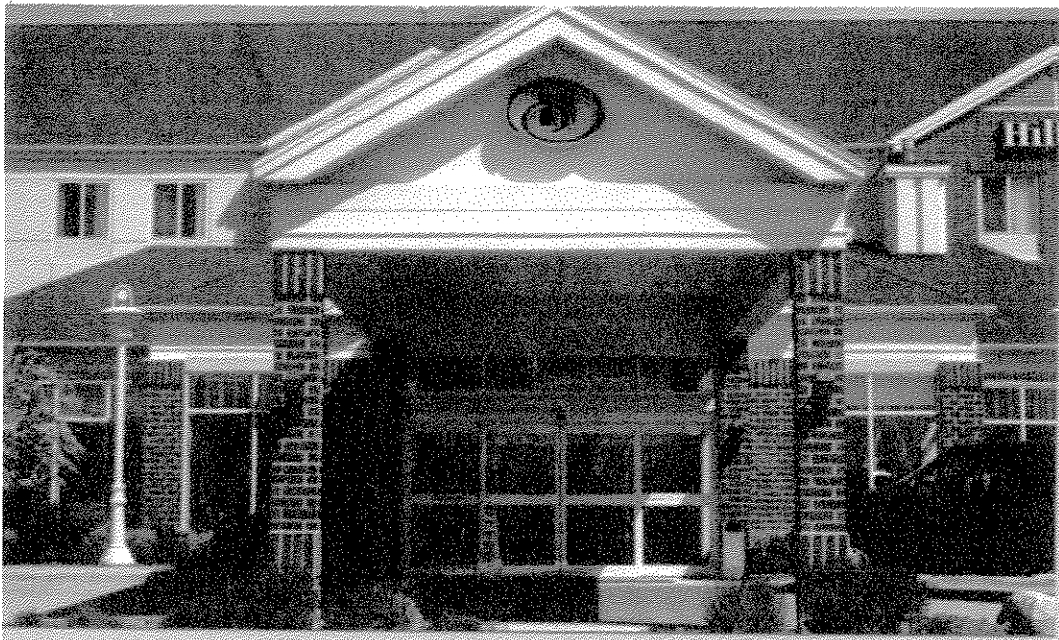


HILTON GARDEN INN  
11600 W. PARK PL.  
MILWAUKEE, WI. 53224

**EXHIBIT A**

File No. 04049B







Milton & Partners

### CHANNEL LETTERS

Individual illuminated channel letters\*, stacked format, based on height of "G" (x). The Hilton "H" is .70x.

•Light color buildings: Standard red trimcap. Returns are painted Akzo 373F6 silver metallic, gloss. Faces are 2283 red Lexan with 3M 3635-30 diffuser film applied second surface to preserve red color by day. Illuminated with 15mm clear red neon.

•Dark color buildings: Standard white trimcap. Returns are painted Akzo 373F6 silver metallic, gloss. Faces are L7328 white Lexan. Illuminated with 15mm 6500 white neon.

\*Note: Hilton and Garden Inn letters have been modified for 15mm neon illumination.

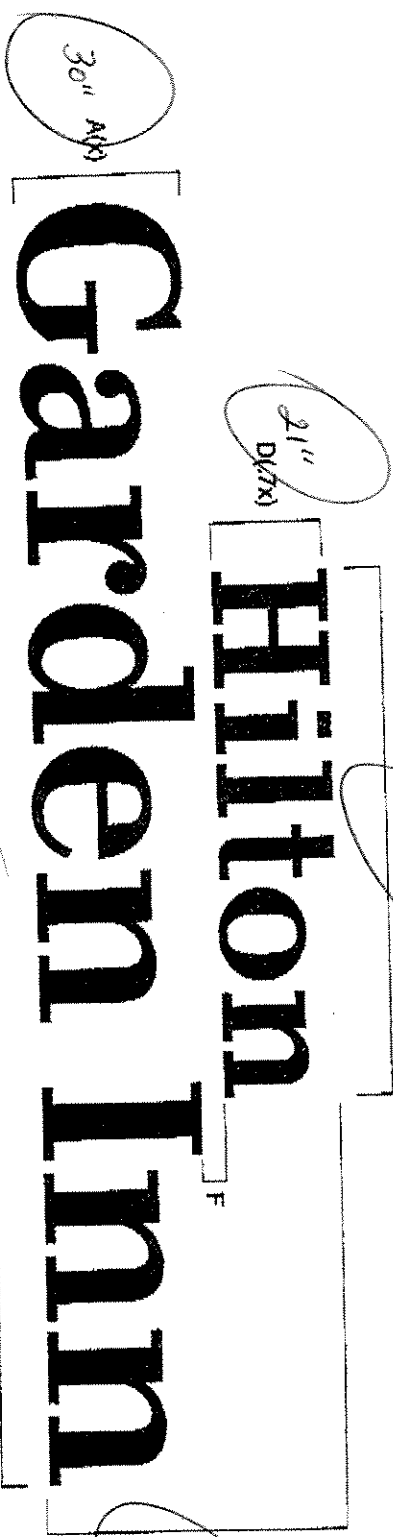
### SQUARE FOOTAGE CALCULATIONS

Two methods have been used to calculate square footage.  
 1. Actual sq. ft. by tracing face outlines:      2. Total sq. ft. by boxing the 2 lines of copy:

Hilton  
Garden Inn

Hilton  
Garden Inn

*Handwritten:* New sign to be installed



SIGN NO.	A	B	C	D	E	F
HGI-IC130S	30"	4'-6-5/8"	19'-9-5/8"	21"	8'-2"	4'-1/4"
HGI-IC136S	36"	5'-5-5/8"	23'-9-1/8"	25'-1/4"	9'-9-7/8"	5'-1/16"
HGI-IC148S	48"	7'-3-1/4"	31'-8-1/8"	33'-5/8"	13'-0-7/8"	6'-9/16"

SIGN NO.	TRACED	BOXED
HGI-IC130S	24.9 sq. ft.	64.04 sq. ft.
HGI-IC136S	36.38 sq. ft.	92.31 sq. ft.
HGI-IC148S	64.61 sq. ft.	169.63 sq. ft.