

GENERAL LANDSCAPE NOTES

- Center edges berms and have the marked prior to any diggs.
- Compare to verify all plant quantities shown on plant list.
- All planting shall comply with standards as described in American Standard of Nursery Stock (ANSI Z602.3-2005). All plant materials must be approved by the Nursery Section. All plants must be specified in the plant schedule or plant material schedule.
- Planting areas shall be prepared to receive a 2" layer of arched landscape fabric, 50' per roll.
- Planting areas shall be prepared to receive a 2" layer of arched landscape fabric, 50' per roll.
- All plants shall be planted with heavy duty poly edging installed with a minimum of 4 inches per 20' of edging. Additional edging may be necessary around tight curves, etc.
- All plants shall be planted with heavy duty poly edging installed with a minimum of 4 inches per 20' of edging. Additional edging may be necessary around tight curves, etc.
- All plants shall be planted with heavy duty poly edging installed with a minimum of 4 inches per 20' of edging. Additional edging may be necessary around tight curves, etc.

Section 502 - Submittal List

One (1) set of submittals shall include:

- 1 set of 2-D drawings of all plants to be used in the project.
- 1 set of 2-D drawings of all plant materials to be used in the project.
- 1 set of 2-D drawings of all plant materials to be used in the project.
- 1 set of 2-D drawings of all plant materials to be used in the project.

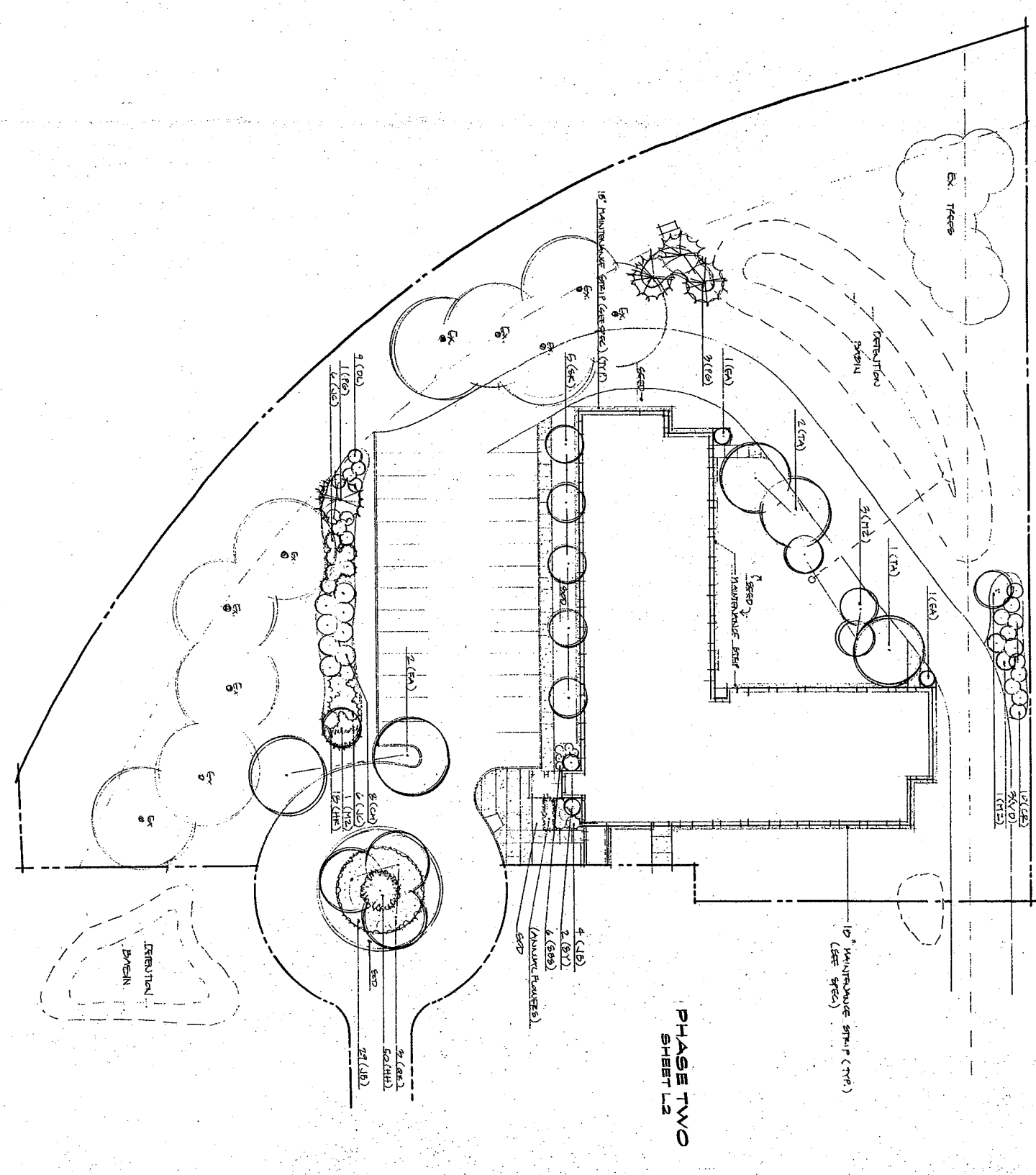
Section 503 - Planting Schedule

One (1) set of submittals shall include:

- 1 set of 2-D drawings of all plants to be used in the project.
- 1 set of 2-D drawings of all plant materials to be used in the project.
- 1 set of 2-D drawings of all plant materials to be used in the project.
- 1 set of 2-D drawings of all plant materials to be used in the project.

PLANT MATERIAL SCHEDULE - THIS SHEET

CODE	QUANTITY	COMMON / BOTANICAL NAME	SIZE	ROOT
01	3	EMULSION OAK / QUERCUS EMULSION	2 1/2"	BB
02	3	WYOMING SPRUCE / PICEA CANADENSIS	2 1/2"	BB
03	3	WYOMING SPRUCE / PICEA CANADENSIS	2 1/2"	BB
04	3	WYOMING SPRUCE / PICEA CANADENSIS	2 1/2"	BB
05	3	WYOMING SPRUCE / PICEA CANADENSIS	2 1/2"	BB
06	3	WYOMING SPRUCE / PICEA CANADENSIS	2 1/2"	BB
07	3	WYOMING SPRUCE / PICEA CANADENSIS	2 1/2"	BB
08	3	WYOMING SPRUCE / PICEA CANADENSIS	2 1/2"	BB
09	3	WYOMING SPRUCE / PICEA CANADENSIS	2 1/2"	BB
10	3	WYOMING SPRUCE / PICEA CANADENSIS	2 1/2"	BB
11	3	WYOMING SPRUCE / PICEA CANADENSIS	2 1/2"	BB
12	3	WYOMING SPRUCE / PICEA CANADENSIS	2 1/2"	BB
13	3	WYOMING SPRUCE / PICEA CANADENSIS	2 1/2"	BB
14	3	WYOMING SPRUCE / PICEA CANADENSIS	2 1/2"	BB
15	3	WYOMING SPRUCE / PICEA CANADENSIS	2 1/2"	BB
16	3	WYOMING SPRUCE / PICEA CANADENSIS	2 1/2"	BB
17	3	WYOMING SPRUCE / PICEA CANADENSIS	2 1/2"	BB
18	3	WYOMING SPRUCE / PICEA CANADENSIS	2 1/2"	BB
19	3	WYOMING SPRUCE / PICEA CANADENSIS	2 1/2"	BB
20	3	WYOMING SPRUCE / PICEA CANADENSIS	2 1/2"	BB
21	3	WYOMING SPRUCE / PICEA CANADENSIS	2 1/2"	BB
22	3	WYOMING SPRUCE / PICEA CANADENSIS	2 1/2"	BB
23	3	WYOMING SPRUCE / PICEA CANADENSIS	2 1/2"	BB
24	3	WYOMING SPRUCE / PICEA CANADENSIS	2 1/2"	BB
25	3	WYOMING SPRUCE / PICEA CANADENSIS	2 1/2"	BB
26	3	WYOMING SPRUCE / PICEA CANADENSIS	2 1/2"	BB
27	3	WYOMING SPRUCE / PICEA CANADENSIS	2 1/2"	BB
28	3	WYOMING SPRUCE / PICEA CANADENSIS	2 1/2"	BB
29	3	WYOMING SPRUCE / PICEA CANADENSIS	2 1/2"	BB
30	3	WYOMING SPRUCE / PICEA CANADENSIS	2 1/2"	BB



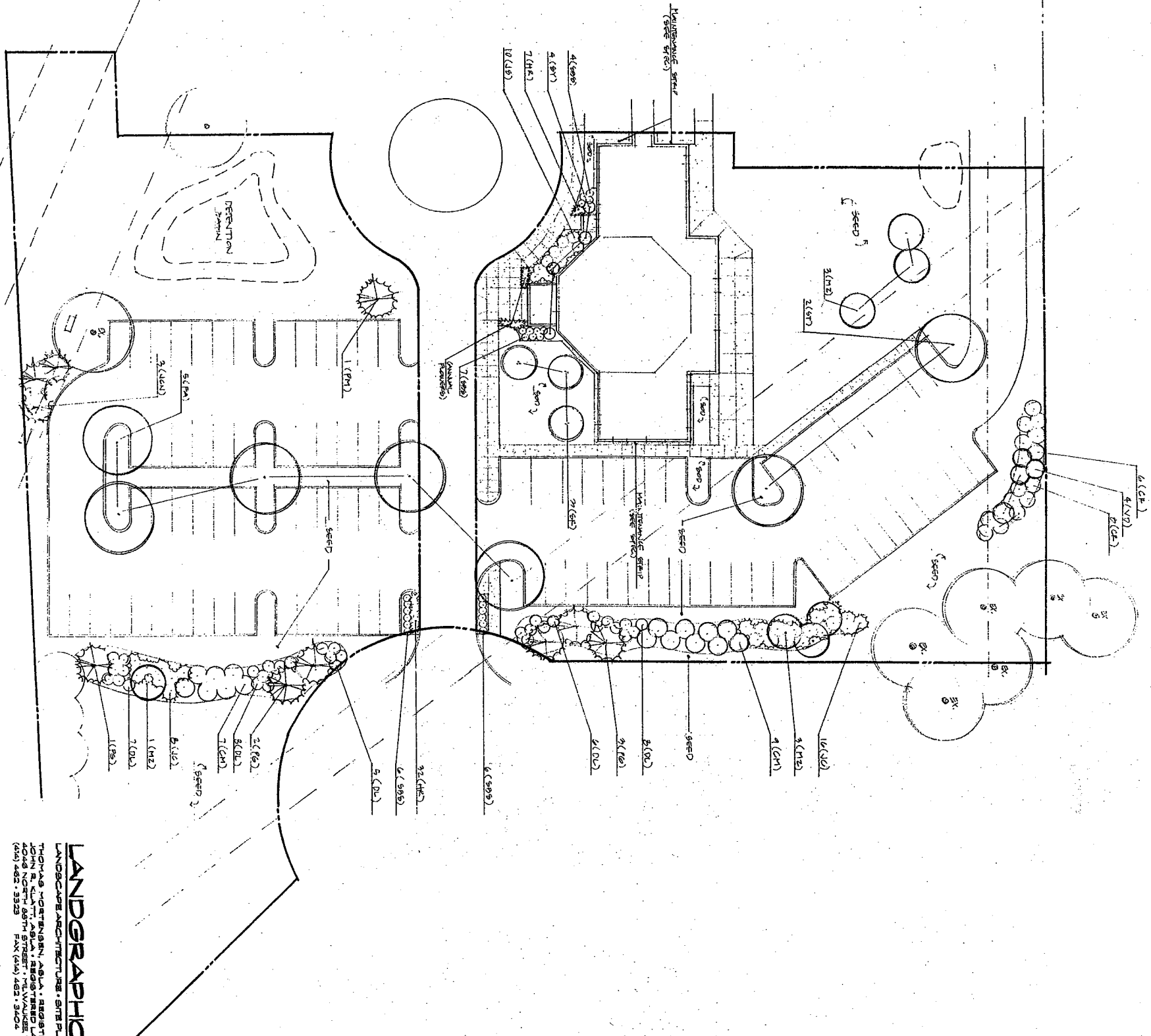
LANDGRAPHICS
 LANDSCAPE ARCHITECTURE • SITE PLANNING • PROJECT CONSULTATION
 THOMAS MORTENSEN, A.S.L.A., REGISTERED LANDSCAPE ARCHITECT
 JOHN R. KLUFT, A.S.L.A., REGISTERED LANDSCAPE ARCHITECT
 4048 NORTH 55TH STREET • WILWAUKEE WISCONSIN 53122
 (262) 282-3322 FAX (262) 982-3404

LANDSCAPE PLAN FOR
 THREE OAKS CIRCLE, NC. • PHASE ONE
 7.8.01



NORTH
 SCALE: 1" = 20' 0"
 SHEET L1
 LANDSCAPE PLAN

PHASE ONE
SHEET L1



PLANT MATERIAL SCHEDULE - THIS SHEET

CODE	QUAN.	COMMON / BOTANICAL NAME	SIZE	ROOT
1A	1	WESTLAKE / MANULIS AMERICANA	24"	BB
1B	1	WESTLAKE / MANULIS AMERICANA	24"	BB
1C	1	WESTLAKE / MANULIS AMERICANA	24"	BB
1D	1	WESTLAKE / MANULIS AMERICANA	24"	BB
1E	1	WESTLAKE / MANULIS AMERICANA	24"	BB
1F	1	WESTLAKE / MANULIS AMERICANA	24"	BB
1G	1	WESTLAKE / MANULIS AMERICANA	24"	BB
1H	1	WESTLAKE / MANULIS AMERICANA	24"	BB
1I	1	WESTLAKE / MANULIS AMERICANA	24"	BB
1J	1	WESTLAKE / MANULIS AMERICANA	24"	BB
1K	1	WESTLAKE / MANULIS AMERICANA	24"	BB
1L	1	WESTLAKE / MANULIS AMERICANA	24"	BB
1M	1	WESTLAKE / MANULIS AMERICANA	24"	BB
1N	1	WESTLAKE / MANULIS AMERICANA	24"	BB
1O	1	WESTLAKE / MANULIS AMERICANA	24"	BB
1P	1	WESTLAKE / MANULIS AMERICANA	24"	BB
1Q	1	WESTLAKE / MANULIS AMERICANA	24"	BB
1R	1	WESTLAKE / MANULIS AMERICANA	24"	BB
1S	1	WESTLAKE / MANULIS AMERICANA	24"	BB
1T	1	WESTLAKE / MANULIS AMERICANA	24"	BB
1U	1	WESTLAKE / MANULIS AMERICANA	24"	BB
1V	1	WESTLAKE / MANULIS AMERICANA	24"	BB
1W	1	WESTLAKE / MANULIS AMERICANA	24"	BB
1X	1	WESTLAKE / MANULIS AMERICANA	24"	BB
1Y	1	WESTLAKE / MANULIS AMERICANA	24"	BB
1Z	1	WESTLAKE / MANULIS AMERICANA	24"	BB

LANDSCAPE ARCHITECTS
THOMAS VOTERBARN, AIA, REGISTERED LANDSCAPE ARCHITECT
4005 NORTH 68TH STREET, MILWAUKEE, WISCONSIN 53222
(414) 462-3323 FAX (414) 462-3404

LANDSCAPE ARCHITECTS • SITE PLANNING • PROJECT CONSULTATION

LANDSCAPE PLAN FOR
THREE OAKS CIRCLE, INC. • PHASE TWO

1-9-01

NORTH
SCALE: 1" = 20' - 0"

SHEET L-2
LANDSCAPE PLAN