

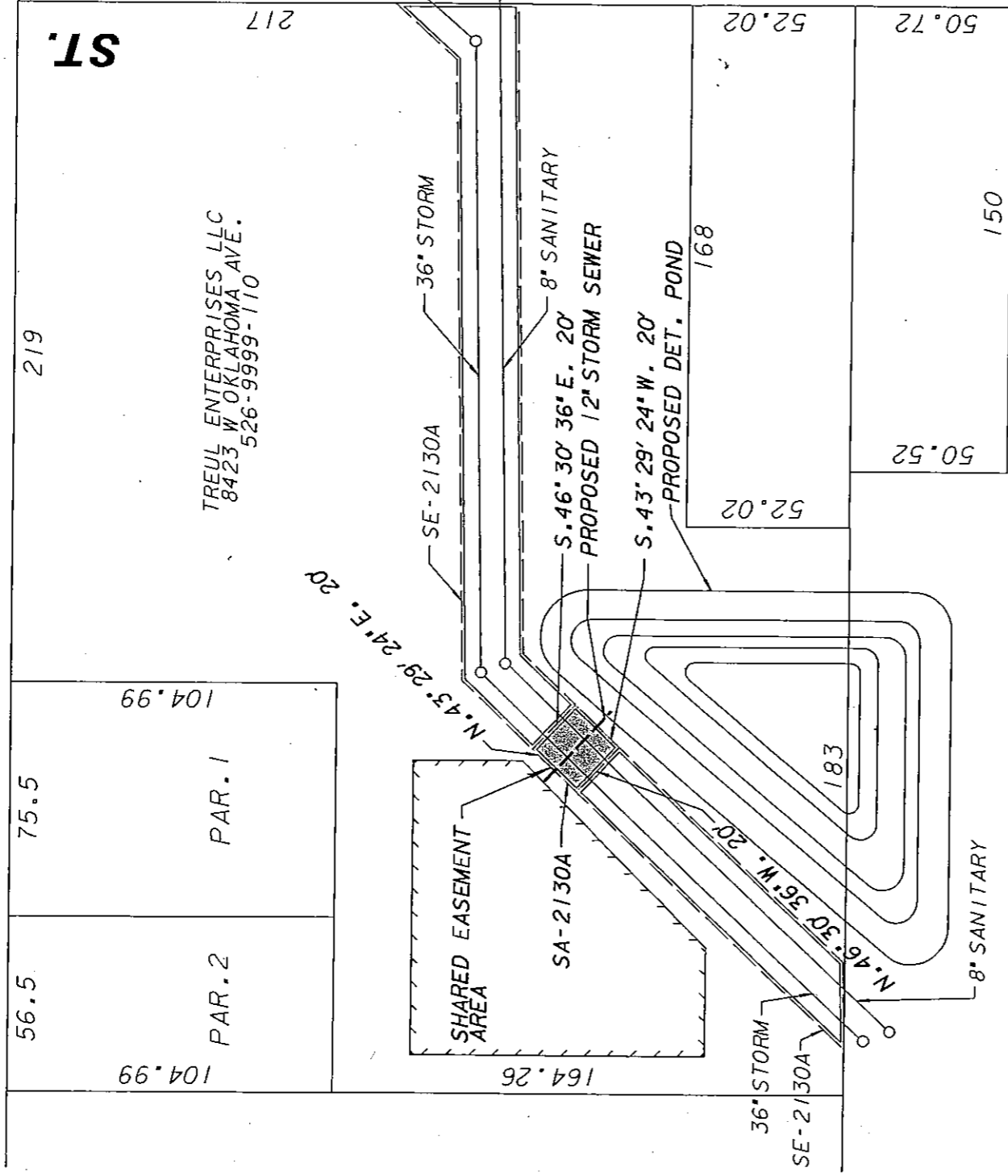
SECTION LINE

CITY OF WEST ALLIS

CITY OF MILWAUKEE

W. OKLAHOMA

AVE.



S. 84TH

EXHIBIT "A"

ENVIRONMENTAL ENGINEERING SECTION
INFRASTRUCTURE SERVICES DIVISION
 DEPARTMENT OF PUBLIC WORKS
 MILWAUKEE, WISCONSIN

PLAN OF SEWER AGREEMENT

AREA IN **N.W. 1/4 SEC. 16, T.6 N., R.21 E.**
IN 170'S OF W. OKLAHOMA AVE
AND 240' W. OF S. 84TH ST.

SCALE 1"=	50'	ATLAS PAGE NO.	526	EASE. NO.	SA-2130-A
DRAWN BY	N.OLEJNICZAK	CH'KD. BY	A.MUNOZ	W.O. NO.	WK683T20009
APPROVED	<i>Timothy J. Thye</i>		DATE	7/31/2007	
APPROVED	<i>[Signature]</i>		FILE NO.	198-6-41	