

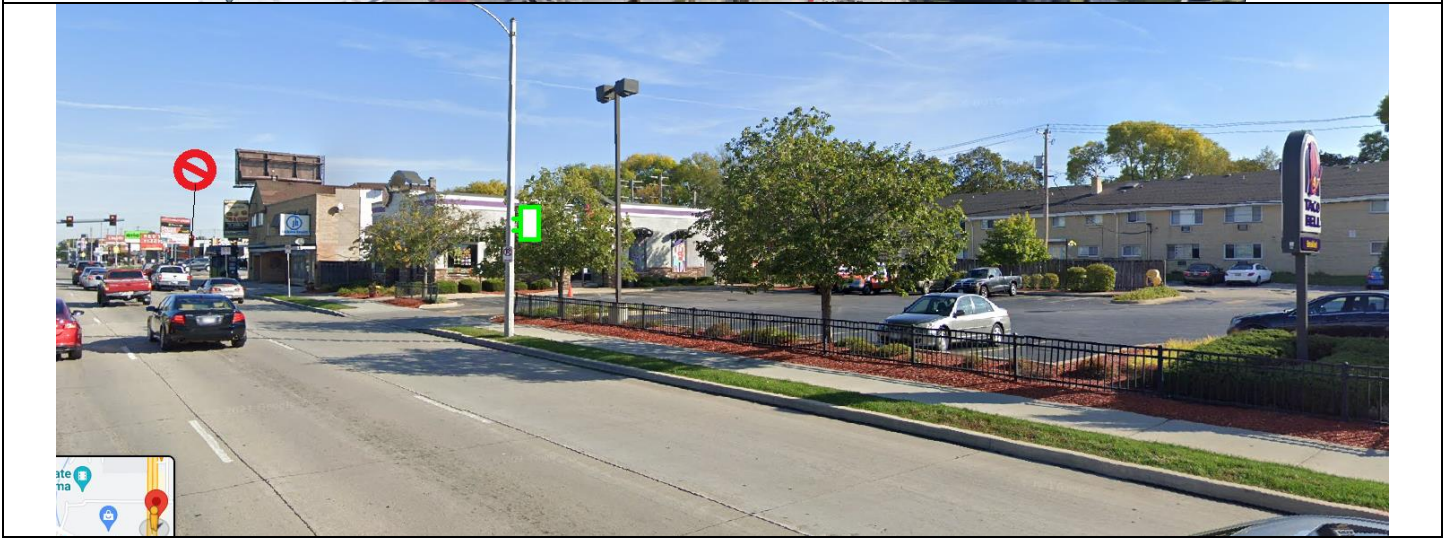
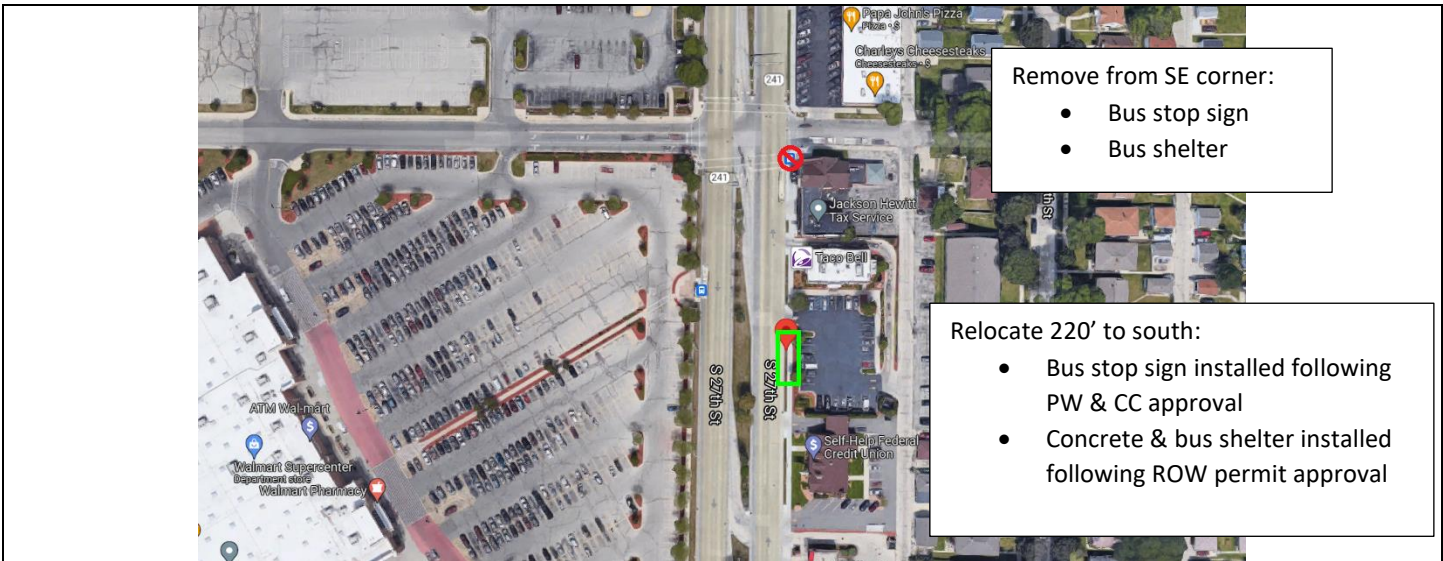
2022-02-04

# MCTS Proposed Bus Stop Location City of Milwaukee February 2022

Recommended by the Transit Stop Technical Advisory Committee



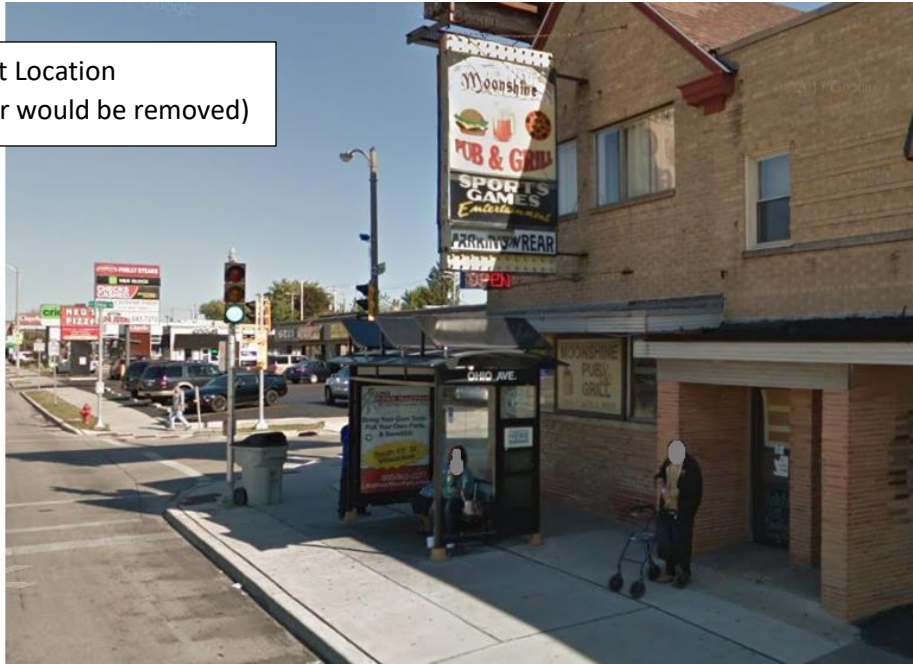
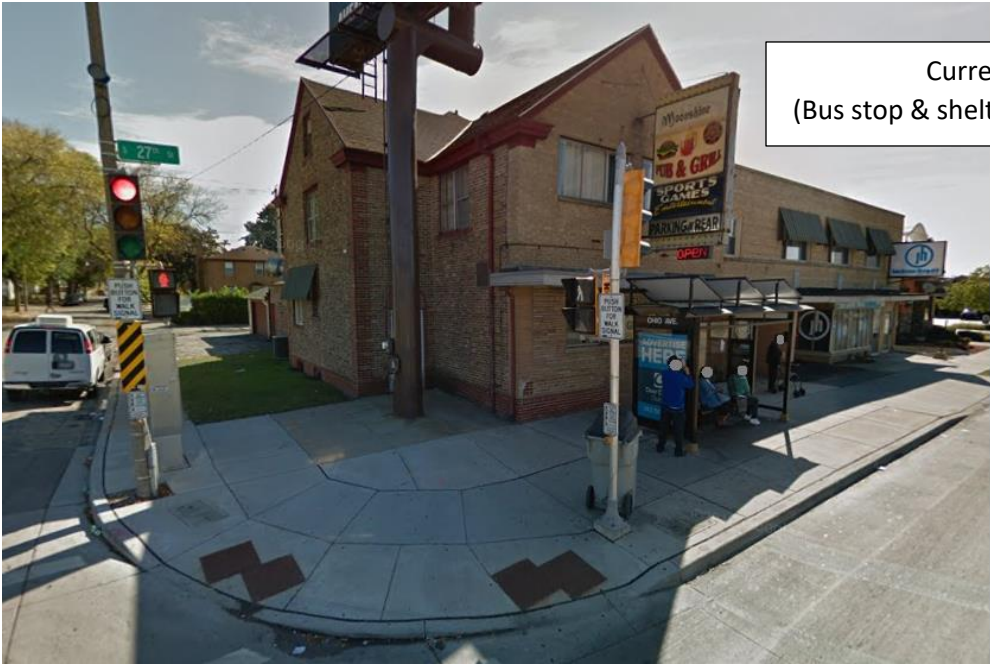
**David Locher**  
**Transportation Manager**  
**414-343-1727**  
[dlocher@mcts.org](mailto:dlocher@mcts.org)



Route(s)	PurpleLine
Reason for New Location	Current location obstructs vacant business property. MCTS is working in coordination with the South 27 <sup>th</sup> Street BID to remove visual barrier (bus shelter), reduce loitering.
Distance from previous stop	0.2 miles, NB 27TH & MORGAN (FARSIDE) #4027 (42.981731, -87.948140)
Distance to following stop	0.3 miles, NB 27TH & OKLAHOMA (FARSIDE) #4031 (42.988853, -87.948009)
Parking Impacts	None
Mobility/Accessibility	The South 27 <sup>th</sup> Street BID is sponsoring concrete work that would support both front and rear doors with an MCTS bus shelter, to be constructed to meet ADA standards. Permit for concrete and shelter installation to be filed concurrently, work contingent upon approval of bus stop relocation by the Public Works Committee and Common Council.
Pedestrian Safety	220-ft from signalized intersection and crosswalk
County Supervisor	Ryan Clancy, Dist. 4 (Jason Haas, Dist. 14 border W/S of 27 <sup>th</sup> )
City Alders	Scott Spiker, Dist. 13 (Mark A. Borkowski, Dist. 11 border W/S of 27 <sup>th</sup> )

Additional Information/Comments

Current Location  
(Bus stop & shelter would be removed)



Proposed Location



**SUPPLEMENTAL – Materials for Concrete and Bus Shelter Installation – to be filed for ROW permit separately**

2022-02-01

**Concrete & Bus Shelter Installation**

**To Accompany Relocation of Existing Bus Stop Northbound 27<sup>th</sup> & Ohio #4029**

**From:** The SE corner of S. 27<sup>th</sup> Street and W. Ohio Avenue

**To:** The east side of S. 27th Street at a point approx. 230-ft south of W. Ohio Avenue  
(Parking lot for 3334 S. 27th Street, Milwaukee, WI 53215)

42.984254, -87.948107

Based on ridership both before and during the pandemic, it is strongly recommended that a shelter be included with this bus stop.

**Average Weekday Daily Ridership**

**Boardings:** 274 (Fall 2019 sample); 177 (Fall 2020 sample)\*

**Alightings:** 51 (Fall 2019 sample); 34 (Fall 2020 sample)\*

*\*Ridership continues to recover from 2020 (negatively impacted by COVID-19), trending upwards in 2021 with final counts pending.*

A bus stop and shelter would require concrete for:

- Bus's front and rear door boarding areas
- Shelter support (in-between bus's doors)
  - Concrete to cover doors and shelter amounts to a 28' long pad filling the grassy area between curb and walk

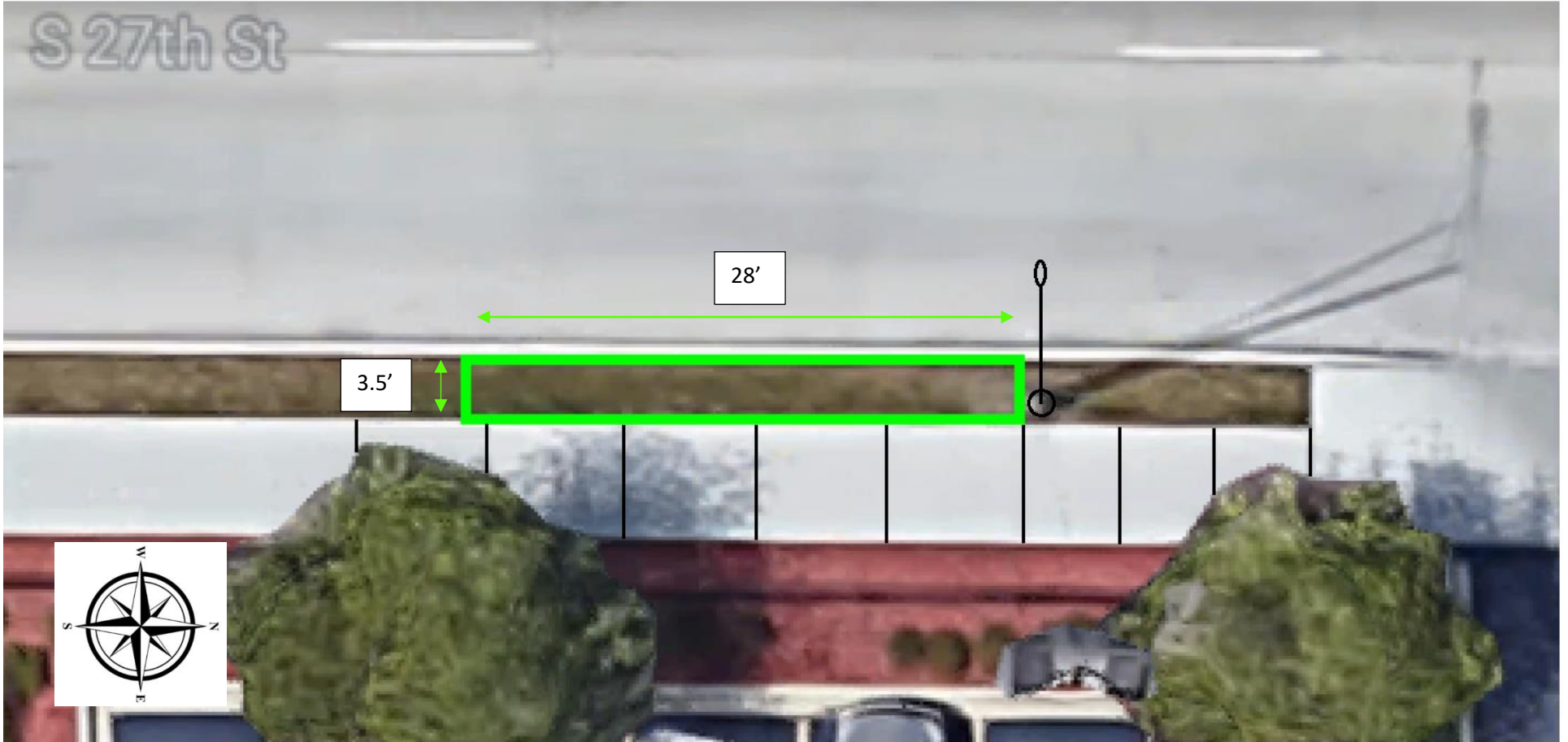
David Locher  
Transportation Manager  
414-343-1727  
[dlocher@mcts.org](mailto:dlocher@mcts.org)



**SUPPLEMENTAL – Materials for Concrete and Bus Shelter Installation – to be filed for ROW permit separately**

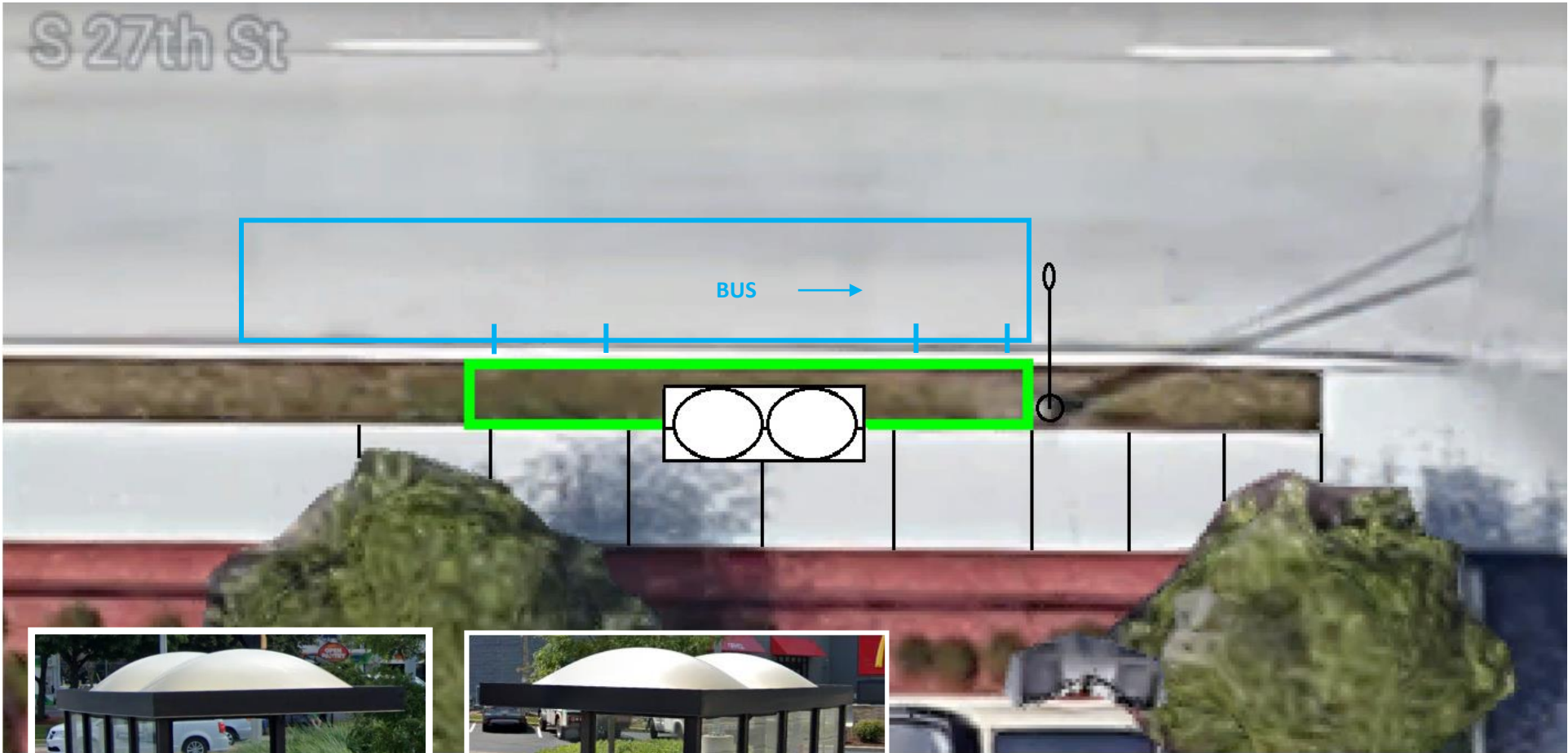
**CONCRETE**

3.5' x 28' (standard 5" thick)



**SUPPLEMENTAL – Materials for Concrete and Bus Shelter Installation – to be filed for ROW permit separately**

**SHELTER PLACEMENT**



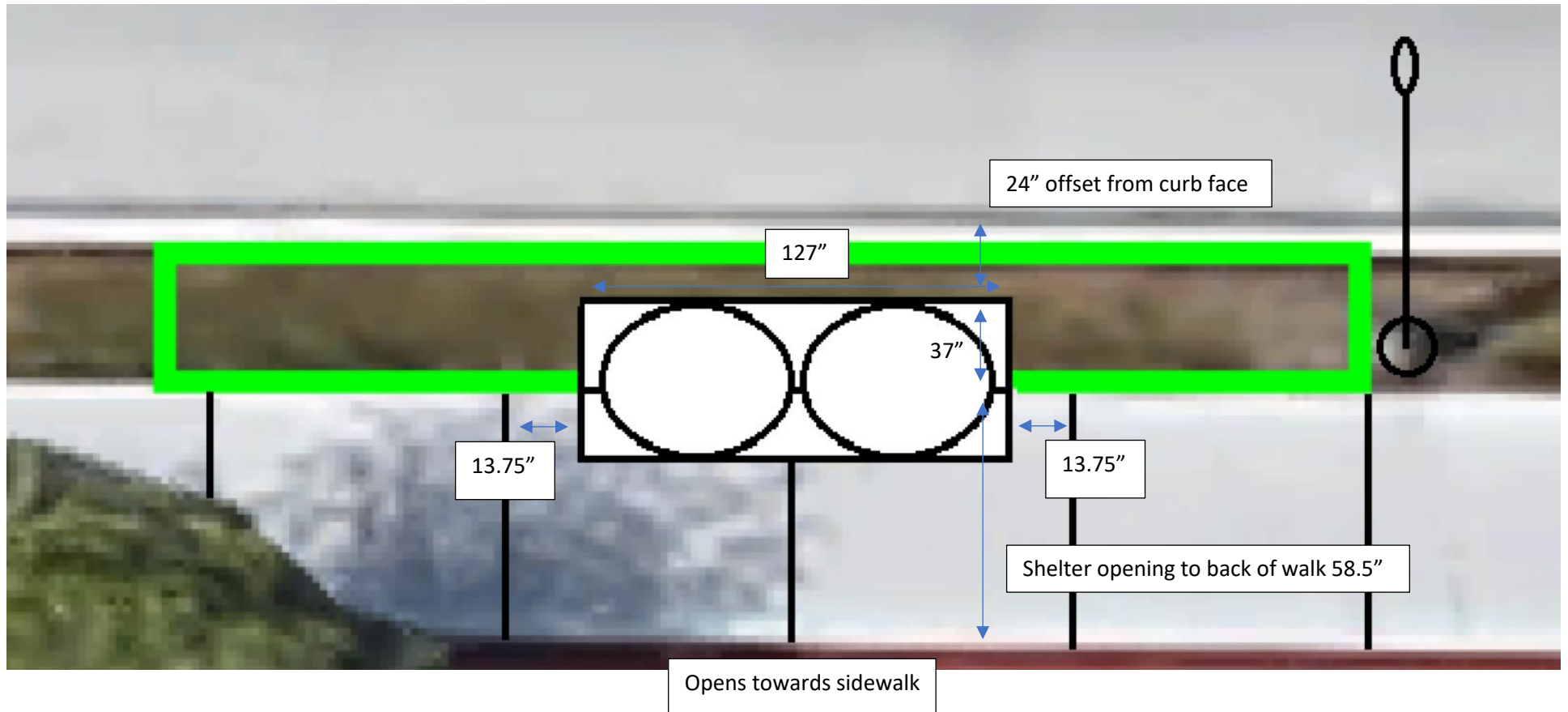
MCTS Shelter  
Model B-2

6 panels

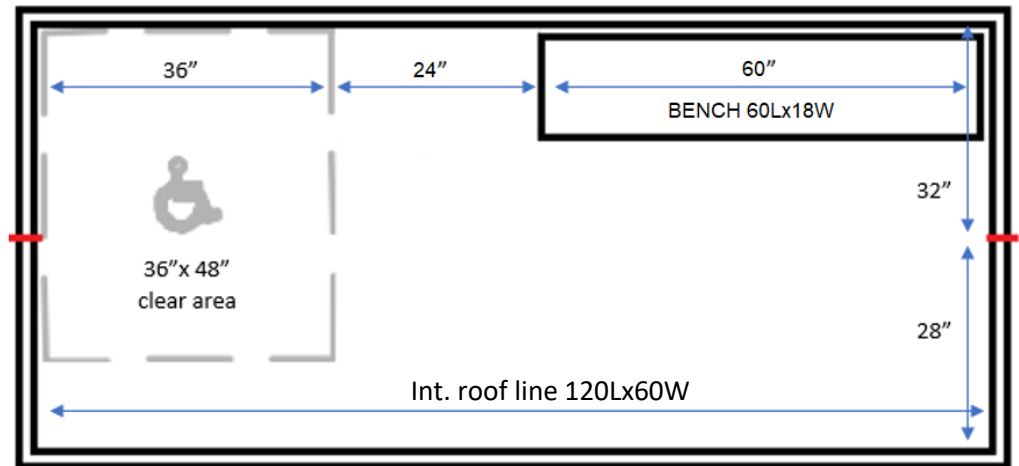
Shelter frame is anchored in concrete at 4 points using 2 bolts for each securement. Each bolt is 5/8" x 4" in typical 5" concrete.

**SUPPLEMENTAL – Materials for Concrete and Bus Shelter Installation – to be filed for ROW permit separately**

**SHELTER PLACEMENT (DETAILS)**



**INTERIOR LAYOUT**



OPENING

**SUPPLEMENTAL – Materials for Concrete and Bus Shelter Installation – to be filed for ROW permit separately**

