



LIVING WITH HISTORY

Certificate of Appropriateness

Milwaukee Historic Preservation Commission/200 E. Wells Street/Milwaukee, WI 53202/phone 414-286-5712/fax 414-286-3004

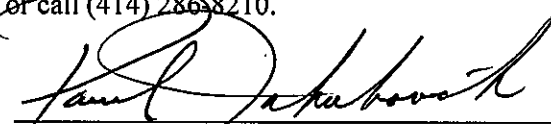
Property 2630 N. DOWNER AV. **Downer Avenue Historic District**
Description of work Install new individual-letter, internally-illuminated signage n signage band above storefront windows.
Date issued 3/27/2013 **PTS ID** 86298 COA, signage

In accordance with the provisions of Section 320-21 (11) and (12) of the Milwaukee Code of Ordinances, the Milwaukee Historic Preservation Commission has issued a certificate of appropriateness for the work listed above. The work was found to be consistent with preservation guidelines. The following conditions apply to this certificate of appropriateness:

All work will be done according to attached drawings and descriptions. Sign will be mounted in the joints between the masonry units and not through the face of the bricks.

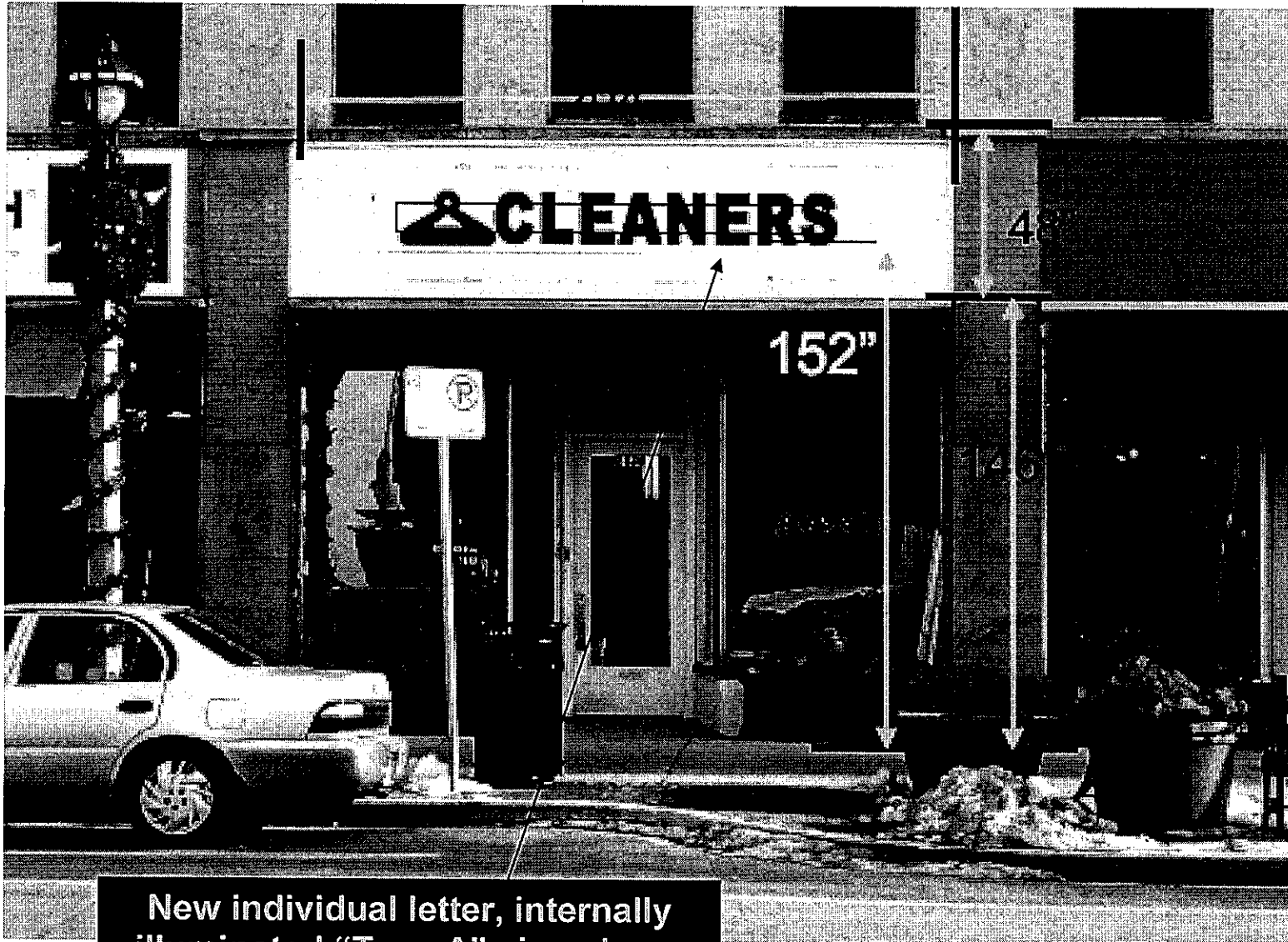
All work must be done in a craftsman-like manner, and must be completed within one year of the date this certificate was issued. Staff must approve any changes or additions to this certificate before work begins. Work that is not completed in accordance with this certificate may be subject to correction orders or citations. If you require technical assistance, please contact Paul Jakubovich of the Historic Preservation staff as follows: Phone: (414) 286-5712 Fax: (414) 286-3004 E-mail: pjakub@milwaukee.gov.

If permits are required, you are responsible for obtaining them from the Milwaukee Development Center. If you have questions about permit requirements, please consult the Development Center's web site, www.milwaukee.gov/build, or call (414) 286-8210.



Paul Jakubovich
City of Milwaukee Historic Preservation

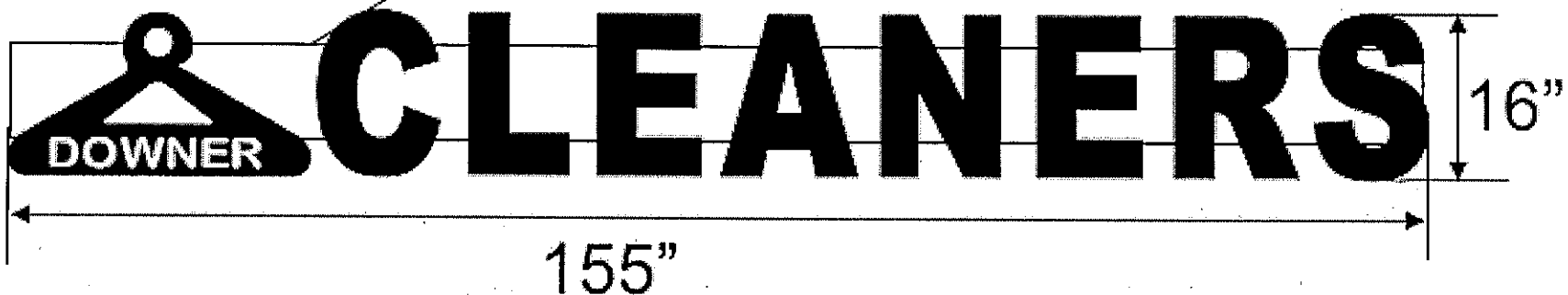
Copies to: Development Center, Ald. Nik Kovac, Contractor Cosmos Sign, Inspector Bill Richter (286-2518), Inspector Heidi Weed



New individual letter, internally illuminated "Type A" sign above storefront windows

Detail of sign

RACE WAY 6"(H) X 155"(W) X 2"(D)



TOTAL SIGN AREA: 16"(H) X 155"(W) = 17.22 SQF

Please note dimensions of raceway.