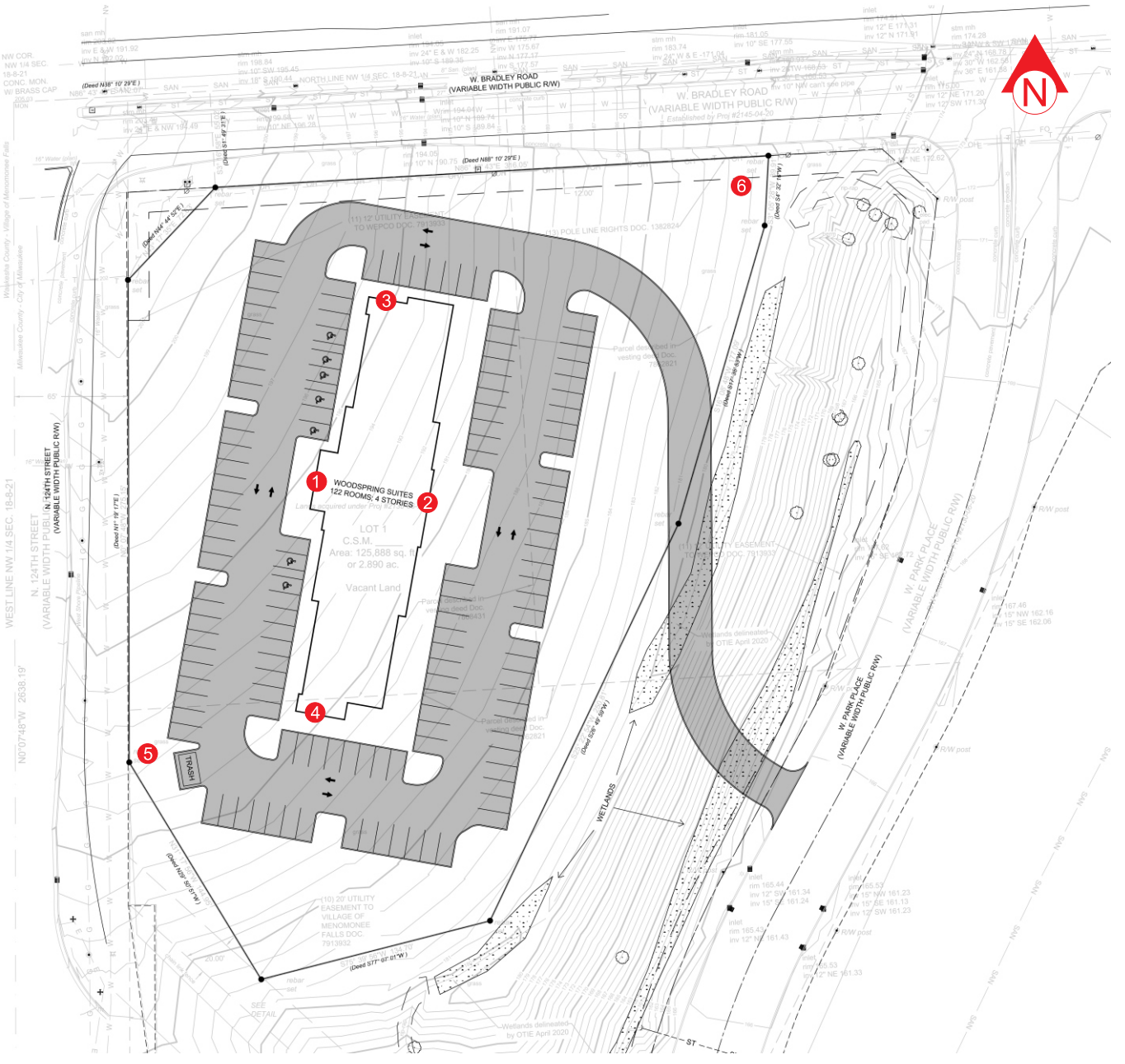


WOODSPRING SUITES MILWAUKEE, WI

PROPOSED SIGNS:

- 1 18" CHANNEL LETTERS
- 2 18" CHANNEL LETTERS
- 3 16" CHANNEL LETTERS
- 4 16" CHANNEL LETTERS
- 5 6'-4 15/16" X 7'-9 7/16" MONUMENT @ 14'-0" OAH
- 6 4'-6 7/16" X 5'-6 1/8" MONUMENT @ 8'-0" OAH



APPROVAL BOX - PLEASE INITIAL		
CUSTOMER APPROVAL		Date

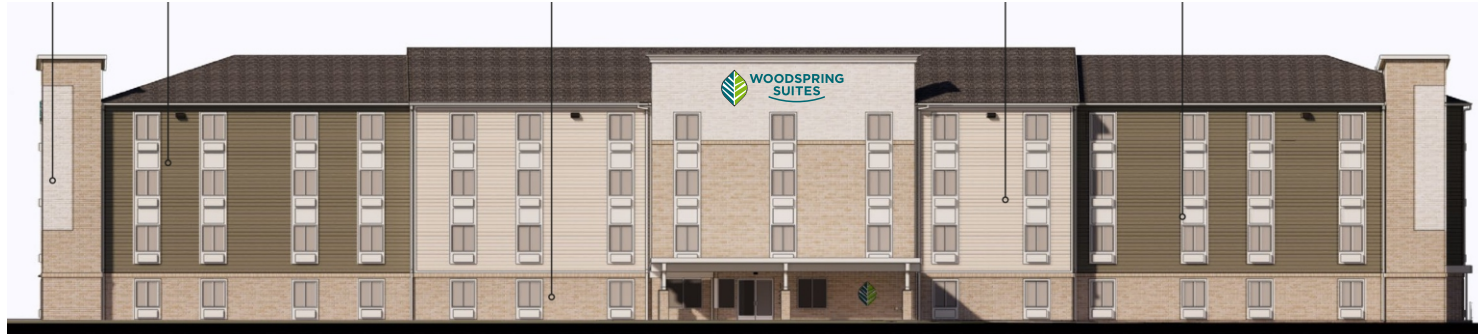
NOTE: Elevation drawings are for customer approval only, drawings are not to be used as any installation guide, all dimensions must be verified before installation.

Customer: WOODSPRING SUITES	Date: 02/04/21	Prepared By: SC/KR/JS/KH/CM/JS	Note: color output may not be exact when viewing or printing this drawing. All colors used are PMS or the closest CMYK equivalent. If these colors are incorrect, please provide the correct PMS match and a revision to this drawing will be made.
Location: MILWAUKEE, WI	File Name: 250194 - R7 - MILWAUKEE, WI	Eng: -	

persona
SIGNS | LIGHTING | IMAGE

DISTRIBUTED BY SIGN UP COMPANY
700 21st Street Southwest
PO Box 210
Watertown, SD 57201-0210
1.800.843.9888 • www.personasigns.com


FRONT ELEVATION
SCALE: 1/32" = 1'-0"



CHANNEL LETTER DETAIL
SCALE: 3/8" = 1'-0"

APPROVAL BOX - PLEASE INITIAL		
CUSTOMER APPROVAL		Date

NOTE: Elevation drawings are for customer approval only, drawings are not to be used as any installation guide, all dimensions must be verified before installation.

Customer: WOODSPRING SUITES	Date: 01/26/21	Prepared By: SC/JS/KH	<small>Note: Color output may not be exact when viewing or printing this drawing. All colors used are PMS or the closest CMYK equivalent. If these colors are incorrect, please provide the correct PMS match and a revision to this drawing will be made.</small>	 SIGNS LIGHTING IMAGE	DISTRIBUTED BY SIGN UP COMPANY 700 21st Street Southwest PO Box 210 Watertown, SD 57201-0210 1.800.843.9888 • www.personasigns.com
Location: MILWAUKEE, WI	File Name: 250194 - R7 - MILWAUKEE, WI	Eng: -			


REAR ELEVATION
SCALE: 1/32" = 1'-0"



CHANNEL LETTER DETAIL
SCALE: 3/8" = 1'-0"

APPROVAL BOX - PLEASE INITIAL		
CUSTOMER APPROVAL		Date

NOTE: Elevation drawings are for customer approval only, drawings are not to be used as any installation guide, all dimensions must be verified before installation.

Customer: WOODSPRING SUITES	Date: 01/26/21	Prepared By: SC/JS	<small>Note: Color output may not be exact when viewing or printing this drawing. All colors used are PMS or the closest CMYK equivalent. If these colors are incorrect, please provide the correct PMS match and a revision to this drawing will be made.</small>	 SIGNS LIGHTING IMAGE	DISTRIBUTED BY SIGN UP COMPANY 700 21st Street Southwest PO Box 210 Watertown, SD 57201-0210 1.800.843.9888 • www.personasigns.com
Location: MILWAUKEE, WI	File Name: 250194 - R7 - MILWAUKEE, WI	Eng: -			

LEFT ELEVATION
SCALE: 1/16" = 1'-0"




CHANNEL LETTER DETAIL
SCALE: 3/8" = 1'-0"

APPROVAL BOX - PLEASE INITIAL

CUSTOMER APPROVAL

Date

NOTE: Elevation drawings are for customer approval only, drawings are not to be used as any installation guide, all dimensions must be verified before installation.

Customer: WOODSPRING SUITES	Date: 01/26/21	Prepared By: SC/JS/KH	<small>Note: Color output may not be exact when viewing or printing this drawing. All colors used are PMS or the closest CMYK equivalent. If these colors are incorrect, please provide the correct PMS match and a revision to this drawing will be made.</small>	 DISTRIBUTED BY SIGN UP COMPANY 700 21st Street Southwest PO Box 210 Watertown, SD 57201-0210 1.800.843.9888 • www.personasigns.com
Location: MILWAUKEE, WI	File Name: 250194 - R7 - MILWAUKEE, WI	Eng: -		

RIGHT ELEVATION
SCALE: 1/16" = 1'-0"




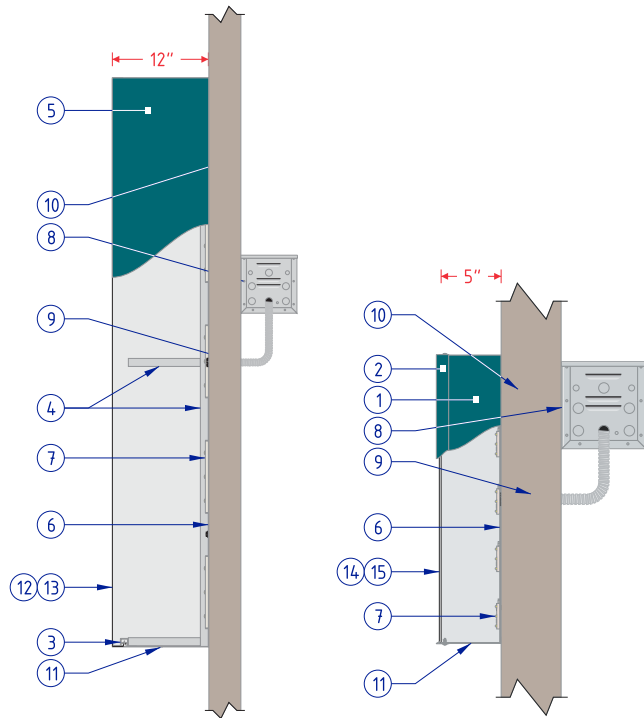
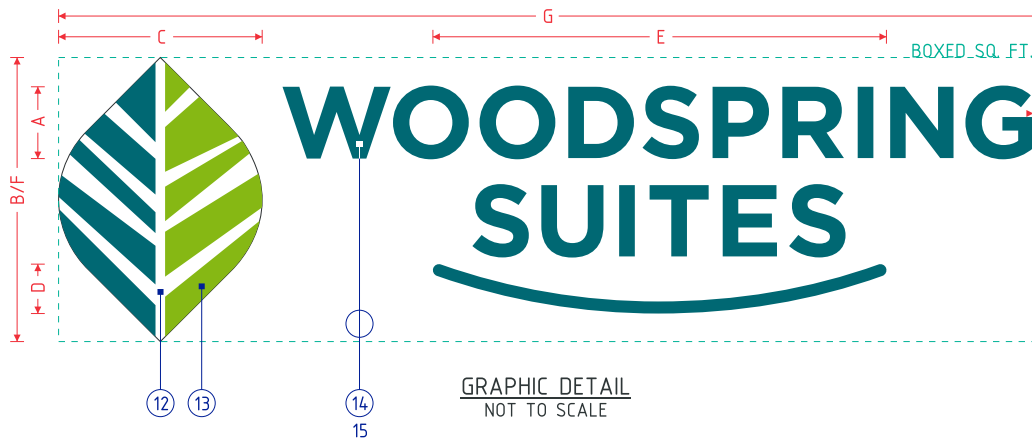
CHANNEL LETTER DETAIL
SCALE: 3/8" = 1'-0"

APPROVAL BOX - PLEASE INITIAL

CUSTOMER APPROVAL		Date
-------------------	--	------

NOTE: Elevation drawings are for customer approval only, drawings are not to be used as any installation guide, all dimensions must be verified before installation.

Customer: WOODSPRING SUITES	Date: 02/03/21	Prepared By: SC/JS/KH/CM	<small>Note: Color output may not be exact when viewing or printing this drawing. All colors used are PMS or the closest CMYK equivalent. If these colors are incorrect, please provide the correct PMS match and a revision to this drawing will be made.</small>	 DISTRIBUTED BY SIGN UP COMPANY 700 21st Street Southwest PO Box 210 Watertown, SD 57201-0210 1.800.843.9888 • www.personasigns.com
Location: MILWAUKEE, WI	File Name: 250194 - R7 - MILWAUKEE, WI	Eng: -		



LOGO PROFILE
NOT TO SCALE

LETTER & UNDERSCORE PROFILE
NOT TO SCALE

WOODSPRING SUITES EXTENDED REMOTE CHANNEL LETTERS SPECIFICATIONS	
NO.	PART/DESCRIPTION
1	.040" X 5" ALUMINUM RETURNS PAINTED TO MATCH PANTONE® 3155 C TEAL
2	1" TRIM CAP PAINTED TO MATCH PANTONE® 3155 C TEAL
3	MILLEKEN MP-5 ALUMINUM EXTRUSION
4	1" X 1" X 1/8" ALUMINUM TUBE
5	.063" ALUMINUM SKIN PAINTED TO MATCH PANTONE® 3155 C TEAL
6	.063" ALUMINUM BACK
7	WHITE LED'S AS REQUIRED
8	REMOTE POWER SUPPLIES AS REQUIRED
9	ELECTRICAL OUT PROVISION: THROUGH BACK
10	MOUNTING HARDWARE AS DETERMINED BY SITE CONDITIONS
11	DRAIN HOLES AS REQUIRED
12	3M PANAGRAPHS III FLEXIBLE FACE
13	DIGITALLY PRINTED DECORATION (1ST SURFACE)
14	3/16" 2447 WHITE ACRYLIC FACE
15	3M 3635-7152 TEAL PERFORATED FILM (1ST SURFACE)

NOTES:

- CHANNEL LETTER INTERIORS TO BE PAINTED REFLECTIVE WHITE
- CHANNEL LETTERS TO USE 120 VOLT STANDARD POWER
- U.L. LISTED

WOODSPRING SUITES EXTENDED REMOTE CHANNEL LETTERS									
"W" HEIGHT	LOGO HEIGHT	LOGO LENGTH	UNDERSCORE HEIGHT	UNDERSCORE LENGTH	OVERALL HEIGHT	OVERALL LENGTH	ELECTRICAL REQUIREMENTS	ACTUAL SQUARE FOOTAGE	BOXED SQUARE FOOTAGE
A	B	C	D	E	F	G			
14"	4'-7 1/4"	3'-3 11/16"	9 5/8"	7'-4 3/16"	4'-7 1/4"	15'-9 9/16"	(1) 20A/120V CIRCUIT	21.38	72.69
16"	5'-3 1/8"	3'-9 5/16"	11"	8'-4 13/16"	5'-3 1/8"	18'-0 5/8"	(1) 20A/120V CIRCUIT	27.92	94.94
18"	5'-11"	4'-3"	1'-0 3/8"	9'-5 3/8"	5'-11"	20'-3 11/16"	(1) 20A/120V CIRCUIT	35.34	120.16
20"	6'-6 7/8"	4'-8 11/16"	1'-1 3/4"	10'-6"	6'-6 7/8"	22'-6 3/4"	(1) 20A/120V CIRCUIT	43.63	148.34
24"	7'-10 11/16"	5'-8"	1'-4 7/16"	12'-7 3/16"	7'-10 11/16"	27'-0 15/16"	(1) 20A/120V CIRCUIT	62.83	213.61
30"	9'-10 5/16"	7'-1"	1'-8 9/16"	15'-9"	9'-10 5/16"	33'-10 3/16"	(1) 20A/120V CIRCUIT	98.17	333.76

APPROVAL BOX - PLEASE INITIAL

CUSTOMER APPROVAL

Date

NOTE: Elevation drawings are for customer approval only, drawings are not to be used as any installation guide, all dimensions must be verified before installation.

Customer:
WOODSPRING SUITES

Date:
02/03/21

Prepared By:
SC/KR/CM

Note: Color output may not be exact when viewing or printing this drawing. All colors used are PMS or the closest CMYK equivalent. If these colors are incorrect, please provide the correct PMS match and a revision to this drawing will be made.

Location:
MILWAUKEE, WI

File Name:
250194 - R7 - MILWAUKEE, WI

Eng:
-

persona
SIGNS | LIGHTING | IMAGE


DISTRIBUTED BY SIGN UP COMPANY
700 21st Street Southwest
PO Box 210
Watertown, SD 57201-0210
1.800.843.9888 • www.personasigns.com

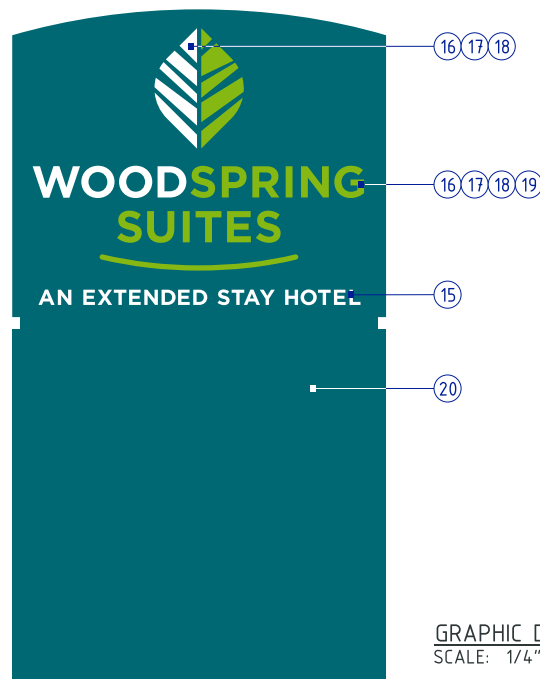
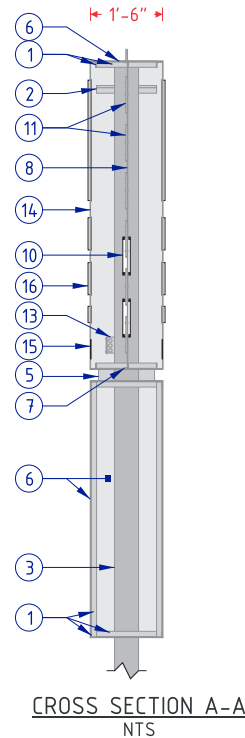
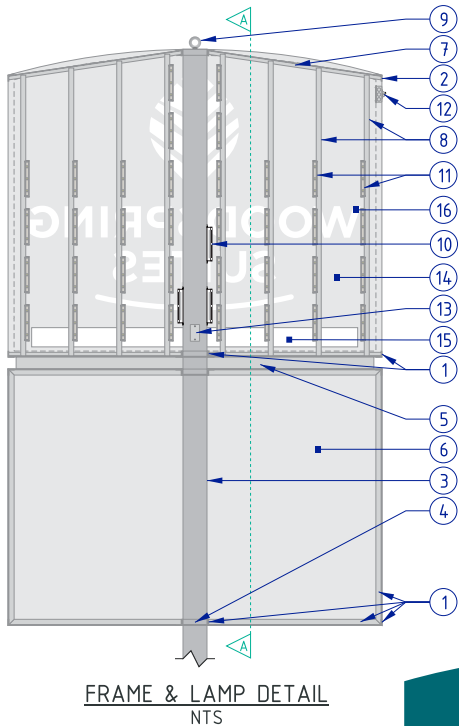


MONUMENT SIGN
SCALE: 3/8" = 1'-0"

APPROVAL BOX - PLEASE INITIAL	
CUSTOMER APPROVAL	Date

NOTE: Elevation drawings are for customer approval only, drawings are not to be used as any installation guide, all dimensions must be verified before installation.

Customer: WOODSPRING SUITES	Date: 02/04/21	Prepared By: SC/KH/JS	<small>Note: Color output may not be exact when viewing or printing this drawing. All colors used are PMS or the closest CMYK equivalent. If these colors are incorrect, please provide the correct PMS match and a revision to this drawing will be made.</small>	 SIGNS LIGHTING IMAGE	DISTRIBUTED BY SIGN UP COMPANY 700 21st Street Southwest PO Box 210 Watertown, SD 57201-0210 1.800.843.9888 • www.personasigns.com
Location: MILWAUKEE, WI	File Name: 250194 - R7 - MILWAUKEE, WI	Eng: -			



WOODSPRING SUITES 6 X 7 MONUMENT DOUBLE FACE SIGN	
NO.	PART/DESCRIPTION
1	1 1/2" X 1 1/2" X 3/16" ALUMINUM ANGLE
2	1 1/2" X 3/16" ALUMINUM STRAP
3	6" X 6" X 3/16" SQUARE TUBE
4	1 1/2" X 1 1/2" X 3/16" ANGLE IRON
5	1/8" X 1" X 3" ALUMINUM C CHANNEL
6	.080" ALUMINUM SKIN
7	1" X 1" X 1/8" ALUMINUM ANGLE
8	ALUMINUM TENSION BAR
9	3/4" EYEBOLT
10	LED POWER SUPPLIES AS REQUIRED
11	GE 7100K WHITE LED'S AS REQUIRED
12	DISCONNECT SWITCH
13	ELECTRICAL OUT PROVISION: LEAVE IN ELECTRICAL BOX
14	.125" ROUTED ALUMINUM FACE
15	.125" 7328 WHITE ACRYLIC
16	3/4" CLEAR ACRYLIC PUSH THROUGH'S
17	3M 3635-70 WHITE DIFFUSER FILM (2ND SURFACE)
18	3M 7725-10 WHITE OPAQUE FILM (1ST SURFACE)
19	DIGITALLY PRINTED OPAQUE FILM TO MATCH PANTONE® 376 C GREEN (1ST SURFACE)
20	PAINT TO MATCH PANTONE® 3155 C TEAL

- NOTES:
- DESIGN FACTOR: TO BE DETERMINED
 - 18" X 1 1/2" X 3/16" ALUMINUM ANGLE FRAME
 - EXTERIOR FINISH: PAINT TO MATCH PANTONE® 3155 C TEAL
 - INTERIOR FINISH: REFLECTIVE WHITE
 - SKINS REMOVABLE FOR SERVICE ACCESS
 - U.L. LISTED
 - ELECTRICAL: 3.30 AMPS/120 VOLTS
 - SQUARE FOOTAGE:
 - BOXED: 49.92
 - ACTUAL: 48.57

APPROVAL BOX - PLEASE INITIAL		
CUSTOMER APPROVAL		Date

NOTE: Elevation drawings are for customer approval only, drawings are not to be used as any installation guide, all dimensions must be verified before installation.

Customer: WOODSPRING SUITES	Date: 02/04/21	Prepared By: SC/KR/JS	<small>Note: Color output may not be exact when viewing or printing this drawing. All colors used are PMS or the closest CMYK equivalent. If these colors are incorrect, please provide the correct PMS match and a revision to this drawing will be made.</small>		DISTRIBUTED BY SIGN UP COMPANY 700 21st Street Southwest PO Box 210 Watertown, SD 57201-0210 1.800.843.9888 • www.personasigns.com
Location: MILWAUKEE, WI	File Name: 250194 - R7 - MILWAUKEE, WI	Eng: -			




MONUMENT SIGN
SCALE: 1/2" = 1'-0"

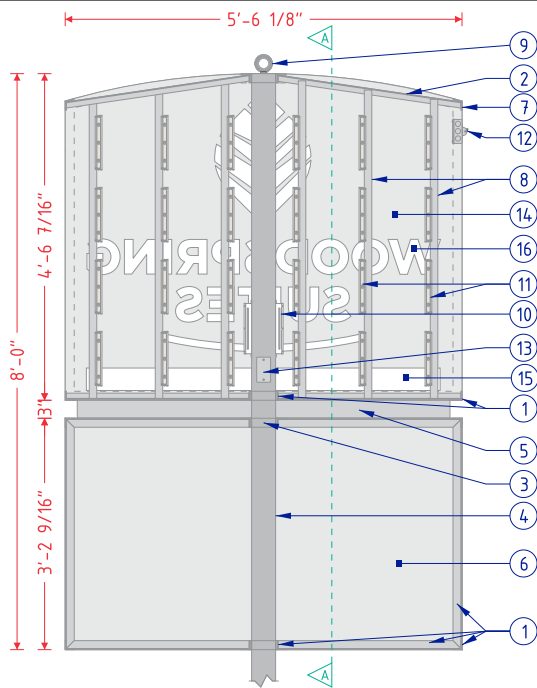
APPROVAL BOX - PLEASE INITIAL

CUSTOMER APPROVAL

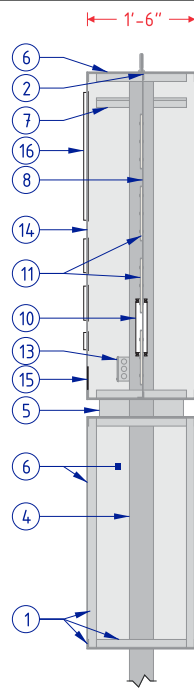
Date

NOTE: Elevation drawings are for customer approval only, drawings are not to be used as any installation guide, all dimensions must be verified before installation.

Customer: WOODSPRING SUITES	Date: 6/17/2020	Prepared By: SC/KR	<small>Note: Color output may not be exact when viewing or printing this drawing. All colors used are PMS or the closest CMYK equivalent. If these colors are incorrect, please provide the correct PMS match and a revision to this drawing will be made.</small>	 persona SIGNS LIGHTING IMAGE	DISTRIBUTED BY SIGN UP COMPANY 700 21st Street Southwest PO Box 210 Watertown, SD 57201-0210 1.800.843.9888 • www.personasigns.com
Location: MILWAUKEE, WI	File Name: 250194 - R7 - MILWAUKEE, WI	Eng: -			



FRAME & LAMP DETAIL
SCALE: 3/8" = 1'-0"



CROSS SECTION A-A
SCALE: 3/8" = 1'-0"



WOODSPRING SUITES 4' X 5' MONUMENT DOUBLE FACE SIGN	
NO.	PART/DESCRIPTION
1	1 1/2" X 1 1/2" X 3/16" ALUMINUM ANGLE
2	1" X 1" X 1/8" ALUMINUM ANGLE
3	1 1/2" X 1 1/2" X 3/16" ANGLE IRON
4	4" X 4" X 3/16" SQUARE TUBE
5	1/8" X 1" X 3" ALUMINUM C CHANNEL
6	.080" ALUMINUM SKIN
7	1 1/2" X 3/16" ALUMINUM STRAP
8	ALUMINUM TENSION BAR
9	3/4" EYEBOLT
10	LED POWER SUPPLIES AS REQUIRED
11	GE 7100K WHITE LED'S AS REQUIRED
12	DISCONNECT SWITCH
13	ELECTRICAL OUT PROVISION: LEAVE IN ELECTRICAL BOX
14	.125" ROUTED ALUMINUM FACE
15	.125" 7328 WHITE ACRYLIC
16	3/4" CLEAR ACRYLIC PUSH THROUGH'S
17	3M 3635-70 WHITE DIFFUSER FILM (2ND SURFACE)
18	3M 7725-10 WHITE OPAQUE FILM (1ST SURFACE)
19	DIGITALLY PRINTED OPAQUE FILM TO MATCH PANTONE® 376 C GREEN (1ST SURFACE)
20	PAINT TO MATCH PANTONE® 3155 C TEAL

NOTES:

- DESIGN FACTOR: TO BE DETERMINED
- 18" X 1 1/2" X 3/16" ALUMINUM ANGLE FRAME
- EXTERIOR FINISH: PAINT TO MATCH PANTONE® 3155 C TEAL
- INTERIOR FINISH: REFLECTIVE WHITE
- SKINS REMOVABLE FOR SERVICE ACCESS
- U.L. LISTED
- ELECTRICAL: 2.20 AMPS/120 VOLTS
- SQUARE FOOTAGE:
BOXED: 25.00
ACTUAL: 24.31

APPROVAL BOX - PLEASE INITIAL

CUSTOMER APPROVAL

Date

NOTE: Elevation drawings are for customer approval only, drawings are not to be used as any installation guide, all dimensions must be verified before installation.

Customer:
WOODSPRING SUITES

Date:
6/17/2020

Prepared By:
SC/KR

Note: Color output may not be exact when viewing or printing this drawing. All colors used are PMS or the closest CMYK equivalent. If these colors are incorrect, please provide the correct PMS match and a revision to this drawing will be made.

Location:
MILWAUKEE, WI

File Name:
250194 - R7 - MILWAUKEE, WI

Eng:
-

persona
SIGNS | LIGHTING | IMAGE

DISTRIBUTED BY SIGN UP COMPANY
700 21st Street Southwest
PO Box 210
Watertown, SD 57201-0210
1.800.843.9888 • www.personasigns.com