

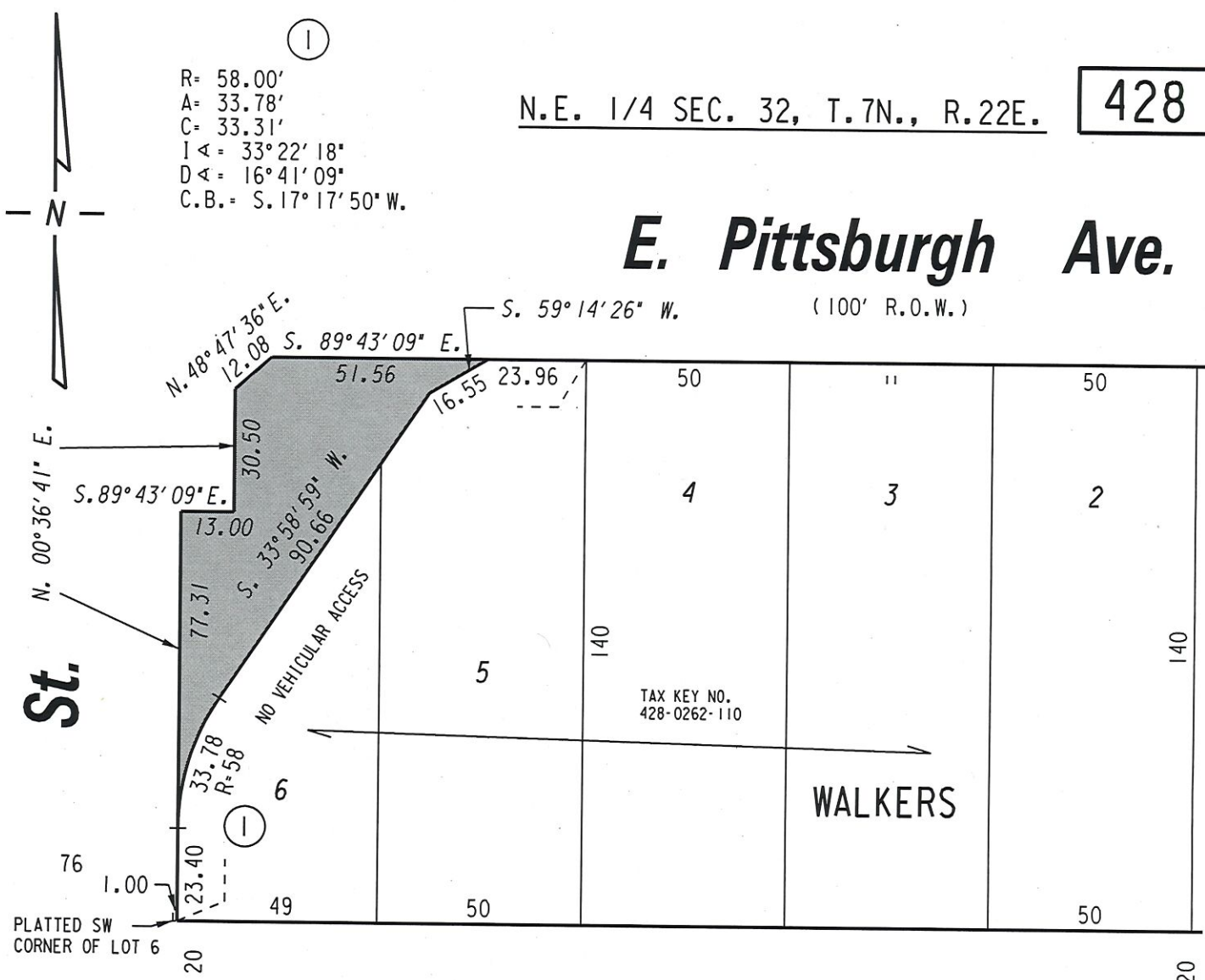
N.E. 1/4 SEC. 32, T.7N., R.22E.

428

R= 58.00'
A= 33.78'
C= 33.31'
I∠= 33°22'18"
D∠= 16°41'09"
C.B.= S.17°17'50" W.

E. Pittsburgh Ave.

(100' R.O.W.)



TAX KEY NO. 428-0262-110

WALKERS

POINT

9

E. Oregon St.

(75' R.O.W.)

St.

PORTION OF PUBLIC STREET PROPOSED TO BE VACATED

EXHIBIT "A" FILE NO. 181877

INFRASTRUCTURE SERVICES DIVISION

MILWAUKEE, WISCONSIN

REVISED: AUGUST 16, 2019
LIMITS REVISED

ASSIGNED TO: W. FUCHS
DRAWN BY: W.F.
PROJECT/GRANT NO.: WK52337421
APPROVED BY:

CH'K'D. BY: W. FUCHS
DATE: APRIL 25, 2019
SCALE: 1" = 40'

[Signature]
CENTRAL DRAFTING & RECORDS MANAGER

[Signature]
CITY ENGINEER