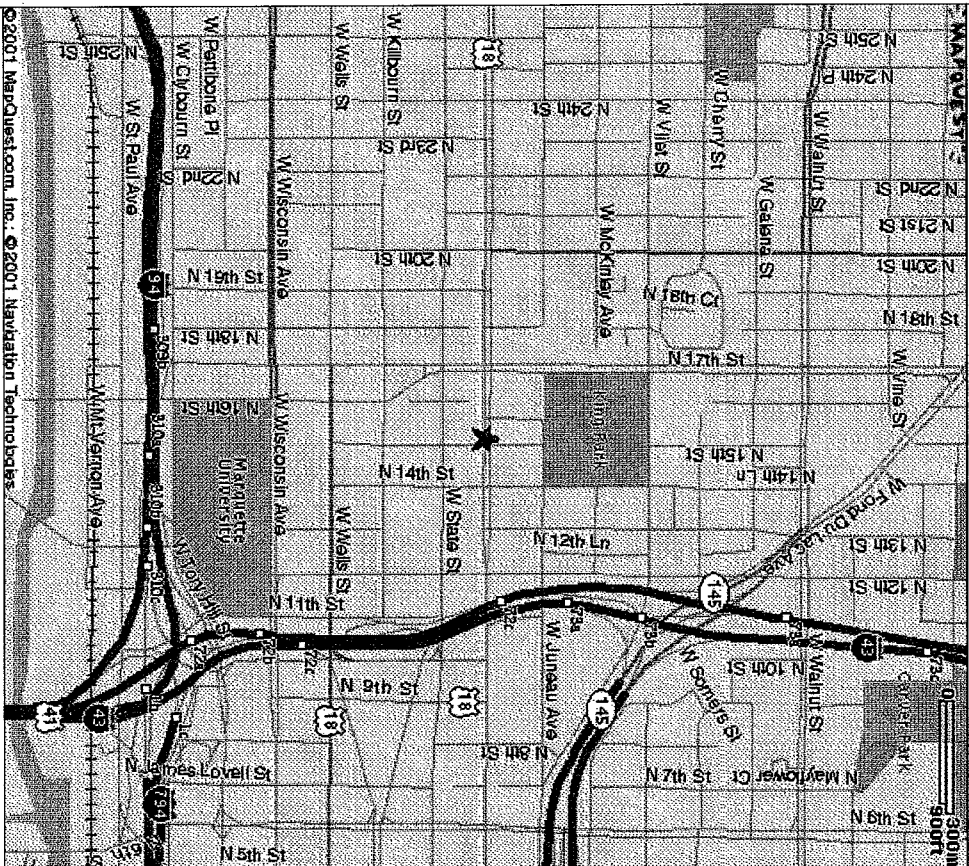


ZND File No. 010312

SOS Children's Village (GPD)

West Highland Avenue @ North 14th Street Milwaukee, Wisconsin

VICINITY MAP



PARTICIPANTS

OWNER:

SOS Children's Village of Wisconsin-Milwaukee Chapter
421 West North Avenue
Milwaukee, WI 53212
Tele: (414) 263-6544
Fax: (414) 263-8675

ARCHITECT:

T-3 Group, Ltd.
222 East Erie Street
Milwaukee, WI 53202
Tele: (414) 272-4440
Fax: (414) 272-7875

GENERAL CONTRACTOR/ CONSTRUCTION MANAGER:

T-3 Group Ltd.
222 East Erie Street
Milwaukee, WI 53202
Tele: (414) 272-4440
Fax: (414) 272-7875

INDEX OF DRAWINGS

ARCHITECTURAL:

TI	TITLE SHEET	06.101
	SURVEY	5.101
V	VICINITY MAP	06.101
PI	PHOTO KEY	06.101
SI	SITE PLAN	06.101

RIGHT T-3 GROUP, LTD., 2000 ALL RIGHTS RESERVED - THIS DRAWING IS NOT TO BE REPRODUCED, CHANGED, COPIED OR ASSIGNED TO ANY THIRD PARTY IN ANY FORM OR MANNER WITHOUT FIRST OBTAINING THE EXPRESSED WRITTEN PERMISSION OF T-3 GROUP, LTD. THE CLIENT AGREES TO INDEMNIFY AND HOLD THE ARCHITECT HARMLESS FROM ANY DAMAGES, LIABILITY, OR COST, INCLUDING ATTORNEY'S FEES AND COSTS OF DEFENSE ARISING FROM ANY CHANGES OR ALTERATIONS MADE BY ANYONE OTHER THAN THE ARCHITECT, OR FROM ANY REUSE OF THE DRAWINGS OR DATA WITHOUT THE PRIOR WRITTEN CONSENT OF THE ARCHITECT.

Revisions:

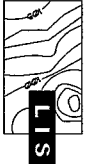
Project:

SOS Children's Village
W. Highland Ave. @ N 14th St.
Milwaukee, Wisconsin

T-3 GROUP, LTD.
222 East Erie Street
Milwaukee, Wisconsin 53202
Tel: 414-272-4440 Fax: 414-272-7875

Drawing Title:
TITLE SHEET

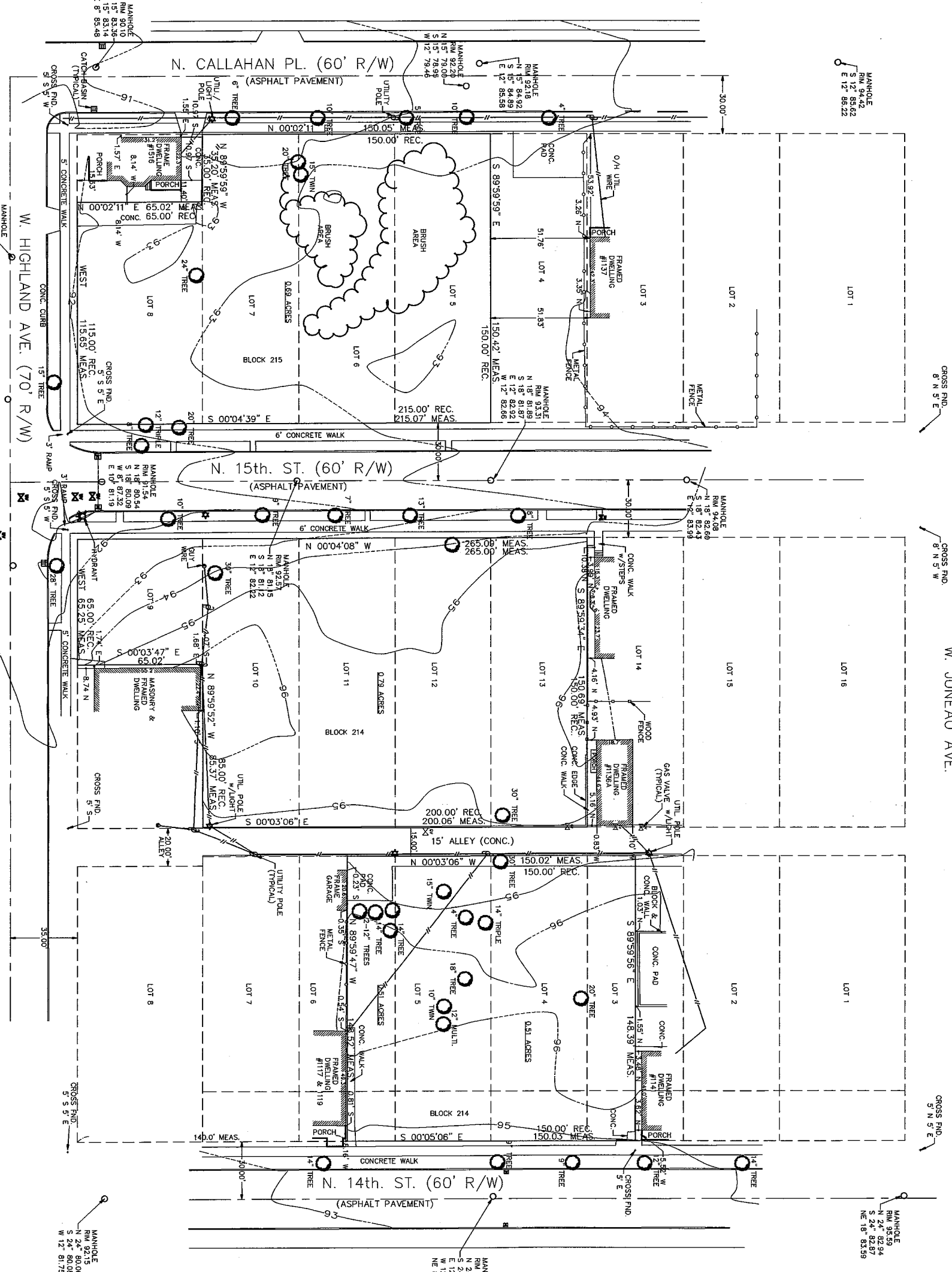
Date: 06.11.01
Scale: NONE
Drawn: BJK/RCK
Job: CV342
Sheet:



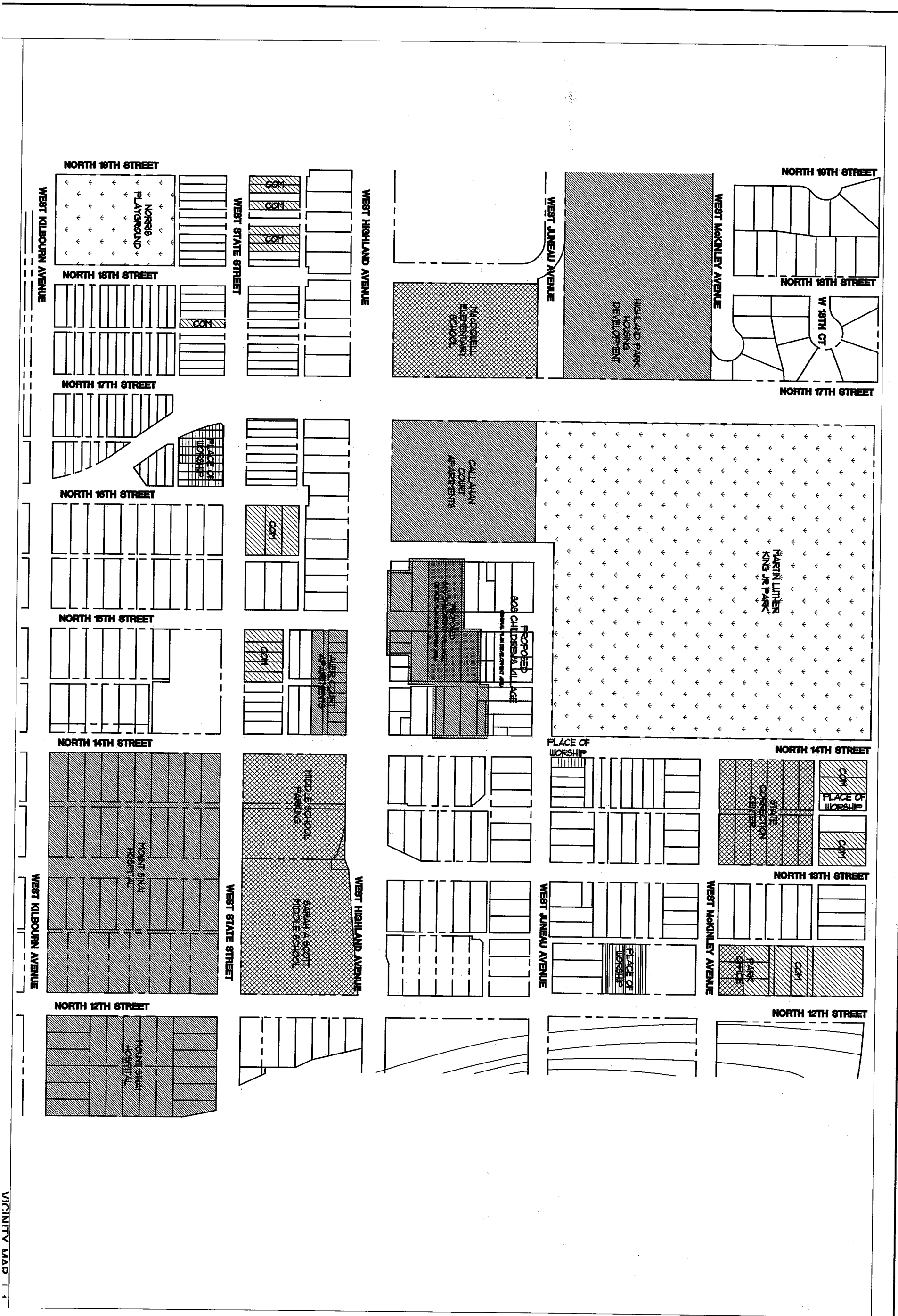
**ENGINEERS, SURVEYORS
AND CONSULTANTS**
 1749 N. DEL. AVE. SUITE 200
 WILMINGTON, DE 19812
 PHONE: 414-261-2222
 FAX: 414-261-2223
 www.lisinc.net

NOTES:
 NOT IN FLOOD PLAN
 1-15-88 ZONE C
 B. ZONED RESIDENTIAL RA 85
 C. FRONT SETBACK 15'
 SIDE SETBACK 6'
 REAR SETBACK 6'
 D. SETBACKS MAY VARY BASED ON BUILDING HEIGHTS. SEE 295-135 CITY ZONING CODES

NOTE:
 BOUNDARY LINES BASED IN BEST AVAILABLE EVIDENCE MUST BE VERIFIED BY RECORDED DOCUMENTS

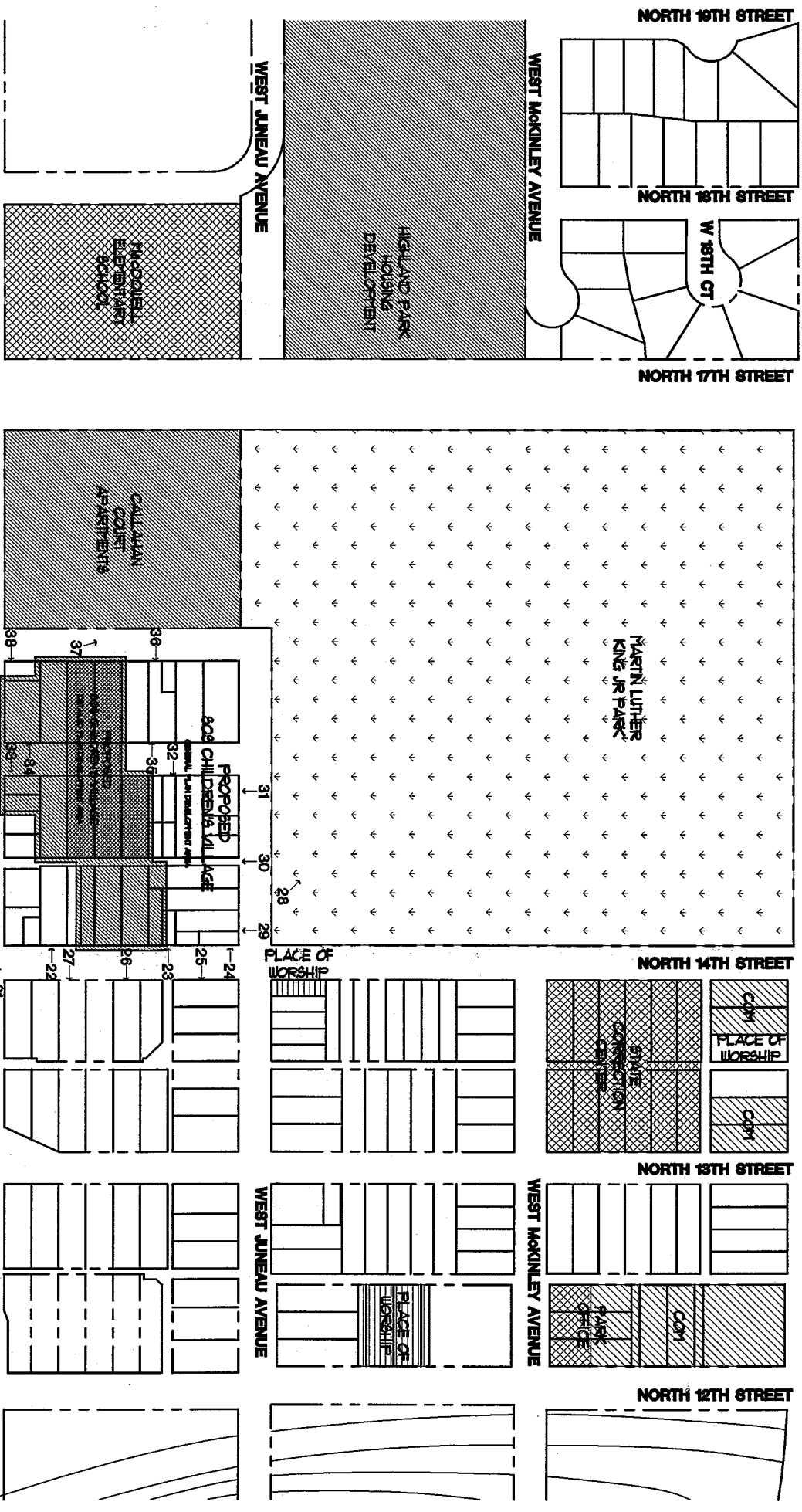


LEGEND
 DRAWN BY: G.G.
 CHECKED BY: J.W.
 DATE: 05/10/01
 JOB NUMBER: 00106580



T-3 GROUP, LTD., 2000 ALL RIGHTS RESERVED - THIS DRAWING IS NOT TO BE REPRODUCED, CHANGED, COPIED OR ASSIGNED TO ANY THIRD PARTY IN ANY FORM OR MANNER WITHOUT FIRST OBTAINING THE EXPRESSED WRITTEN PERMISSION OF T-3 GROUP, LTD. THE CLIENT AGREES TO INDEMNIFY AND HOLD THE ARCHITECT HARMLESS FROM ANY DAMAGES, LIABILITY, OR COST, INCLUDING ATTORNEY'S FEES AND COSTS OF DEFENSE ARISING FROM ANY CHANGES OR ALTERATIONS MADE BY ANYONE OTHER THAN THE ARCHITECT, OR FROM ANY REUSE OF THE DRAWINGS OR DATA WITHOUT THE PRIOR WRITTEN CONSENT OF THE ARCHITECT.

Drawing Title: VICINITY MAP	T-3 GROUP, LTD. 222 East Erie Street Milwaukee, Wisconsin 53202 Tel: 414-272-4440 Fax: 414-272-7875	SOS Children's Village W. Highland Ave. • N 14th St. Milwaukee, Wisconsin	Project:	Revisions:
			Date: 08.11.01 Scale: NTS Drawn: RCK Job: CV342 Sheet: 1	Project:



NOTE:
 NUMBERS & ARROWS
 CORRESPOND TO
 PHOTO NUMBER AND
 THE GENERAL
 DIRECTION THE
 PHOTO IS TAKEN

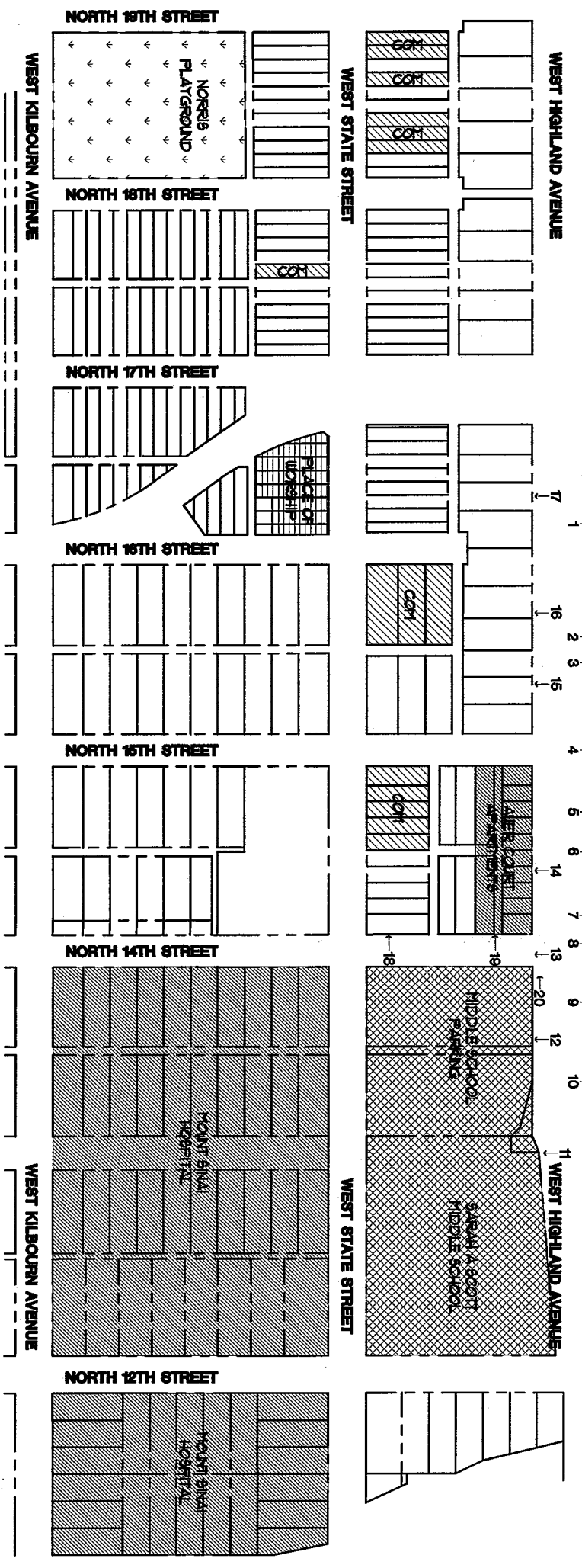


PHOTO KEY
 1
 CT

T-3 GROUP, LTD. 2000 ALL RIGHTS RESERVED - THIS DRAWING IS NOT TO BE REPRODUCED, CHANGED, COPIED OR ASSIGNED TO ANY THIRD PARTY IN ANY FORM OR MANNER WITHOUT FIRST OBTAINING THE EXPRESSED WRITTEN PERMISSION OF T-3 GROUP, LTD. THE CLIENT AGREES TO INDEMNIFY AND HOLD THE ARCHITECT HARMLESS FROM ANY DAMAGES, LIABILITY, OR COST, INCLUDING ATTORNEY'S FEES AND COSTS OF DEFENSE ARISING FROM ANY CHANGES OR ALTERATIONS MADE BY ANYONE OTHER THAN THE ARCHITECT, OR FROM ANY REUSE OF THE DRAWINGS OR DATA WITHOUT THE PRIOR WRITTEN CONSENT OF THE ARCHITECT.

Date: 06.11.01 Scale: NTS Drawn: RCK Job: CV342 Sheet:	T-3 GROUP, LTD. 222 East Erie Street Milwaukee, Wisconsin 53202 Tel: 414-272-4440 Fax: 414-272-7875	SOS Children's Village W. Highland Ave. @ N 14th St. Milwaukee, Wisconsin	Revisions: Project:
--	---	--	------------------------

SITE PLAN
 1
 SP11

RIGHT T-3 GROUP, LTD. 2000 ALL RIGHTS RESERVED - THIS DRAWING IS NOT TO BE REPRODUCED, CHANGED, COPIED OR ASSIGNED TO ANY THIRD PARTY IN ANY FORM OR MANNER WITHOUT FIRST OBTAINING THE EXPRESSED WRITTEN PERMISSION OF T-3 GROUP, LTD. THE CLIENT AGREES TO INDEMNIFY AND HOLD THE ARCHITECT HARMLESS FROM ANY DAMAGES, LIABILITY, OR COST, INCLUDING ATTORNEY'S FEES AND COSTS OF DEFENSE ARISING FROM ANY CHANGES OR ALTERATIONS MADE BY ANYONE OTHER THAN THE ARCHITECT, OR FROM ANY REUSE OF THE DRAWINGS OR DATA WITHOUT THE PRIOR WRITTEN CONSENT OF THE ARCHITECT.

Date: 06/11/01 Scale: 1"=30'-0" Drawn: BLK/RCK Job: CV342 Sheet:	T-3 GROUP, LTD. 222 East Erie Street Milwaukee, Wisconsin 53202 Tel: 414-272-4440 Fax: 414-272-7875	SOS Children's Village W. Highland Ave. @ N 14th St. Milwaukee, Wisconsin	Project:	Revisions:
--	---	--	----------	------------

