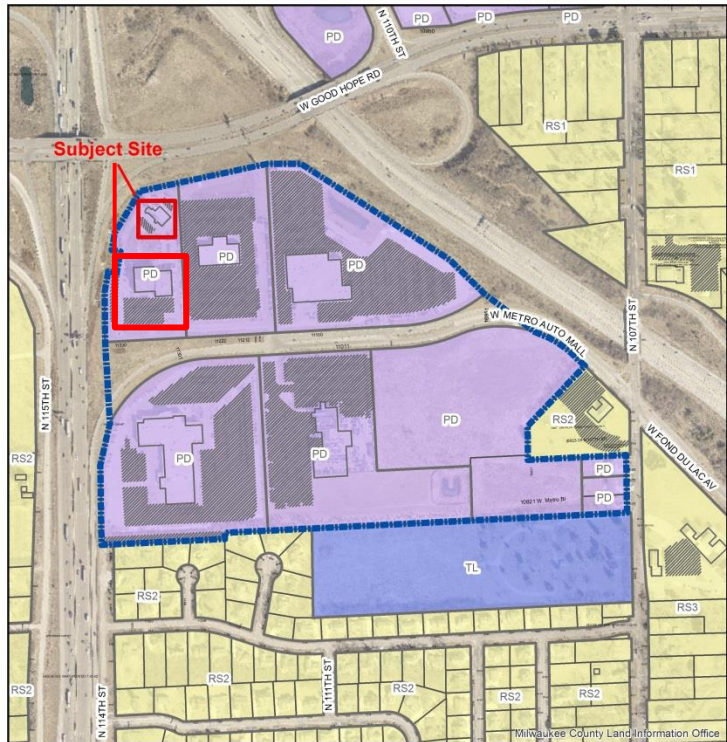


File Nos. 160467 & 160466. A substitute ordinance relating to the Ninth Amendment to the General Planned Development known as Milwaukee Metro Center to allow additional wall signage on the Phase 1 site, and a substitute resolution relating to a Minor Modification to the Detailed Planned Development known as Milwaukee Metro Center, Phase 1, for additional signage at 11330 West Metro Auto Mall, located on the north side of West Metro Auto Mall, east of U.S. Highway 41 and 45, in the 5th Aldermanic District.



160467
9th Amendment to GPD - Metro Center
11330 W. Metro Auto Mall
September 2016

Legend
GPD Boundary



S

File No. 160467 & 160466. Subject Site 1 Context Photos.



View from Interstate 41 off-ramp, looking southeast



View from West Good Hope Road, looking southwest



View from Interstate 41 off-ramp, looking northeast



File No. 160466. Subject Site 2 Context Photos.



View from Interstate 41 off-ramp, looking southeast



View from Interstate 41 off-ramp, looking northeast



View from West Metro Auto Mall, looking northwest

File Nos. 160467 & 160466. Signage.



North & West Elevation



South Elevation

