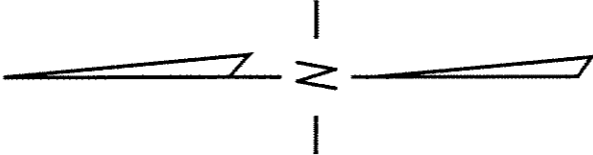
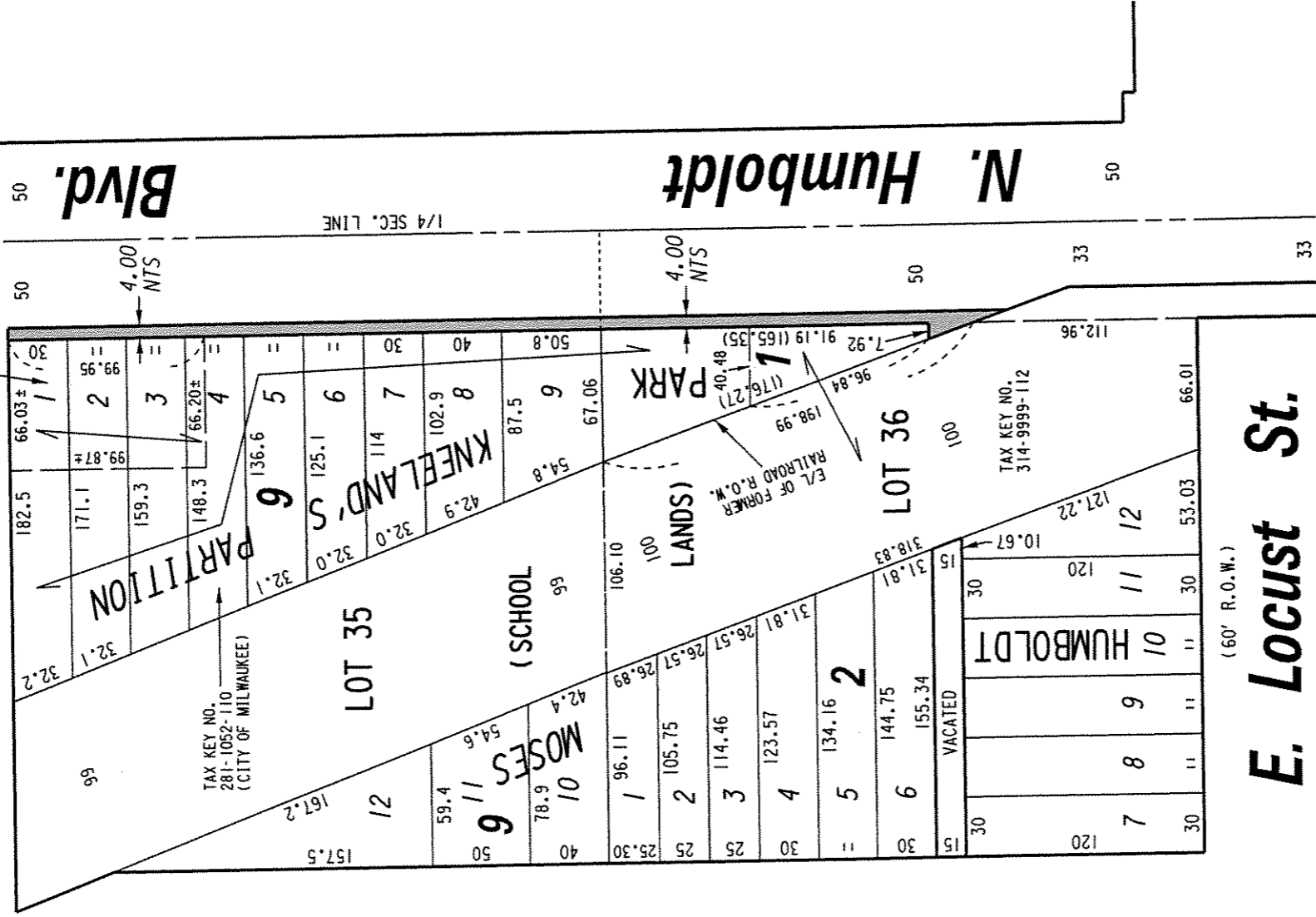


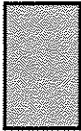
N.W. 1/4 SEC. 16, T.7N., R.22E.

(60' R.O.W.)

E. Chambers St.

TAX KEY NO.
281-1051-100
(CITY OF MILWAUKEE)




 PORTION OF PUBLIC STREET PROPOSED TO BE VACATED

E. Locust St.

(60' R.O.W.)

EXHIBIT "A"

FILE NO. 050938

INFRASTRUCTURE SERVICES DIVISION

MILWAUKEE, WISCONSIN

ASSIGNED TO: W.E. FUCHS
 CH'K'D. BY: W.E. FUCHS
 DRAWN BY: W.E.F.
 DATE: OCT. 17, 2006
 PROJECT/GRANT NO.: WK52337235
 SCALE: 1" = 80'
 APPROVED BY:

Maureen Lindholm
 CENTRAL DRAFTING & RECORDS MANAGER

W.E. Fuchs
 CIVIL ENGINEER