

TID 49: Cathedral Place



- Created in 2002
- Funded \$25,400,000 for parking structure

Amendment 1 to TID 49



Photo: John December

- Amended in 2011
- Funded \$9,700,000 for streetcar project

Amendment 2 to TID 49

TID 49: CATHEDRAL PLACE, AMENDED MAP NO. 3 PROPOSED IMPROVEMENTS AND USES

Prepared by the Department of City Development Planning Division, 1/10/2020
Source: City of Milwaukee Information Technology Management Division

0 125 250 Feet



MAP LEGEND

- TID 49 Boundary
- Parcel Boundary
- Public Infrastructure Improvements

- \$1,850,000 for public infrastructure improvements
- \$7,754,926 for donations to TID 74 (North 35th Street and West Capitol Drive)

Cathedral Square Today

Existing Conditions – Opportunities for Improvements



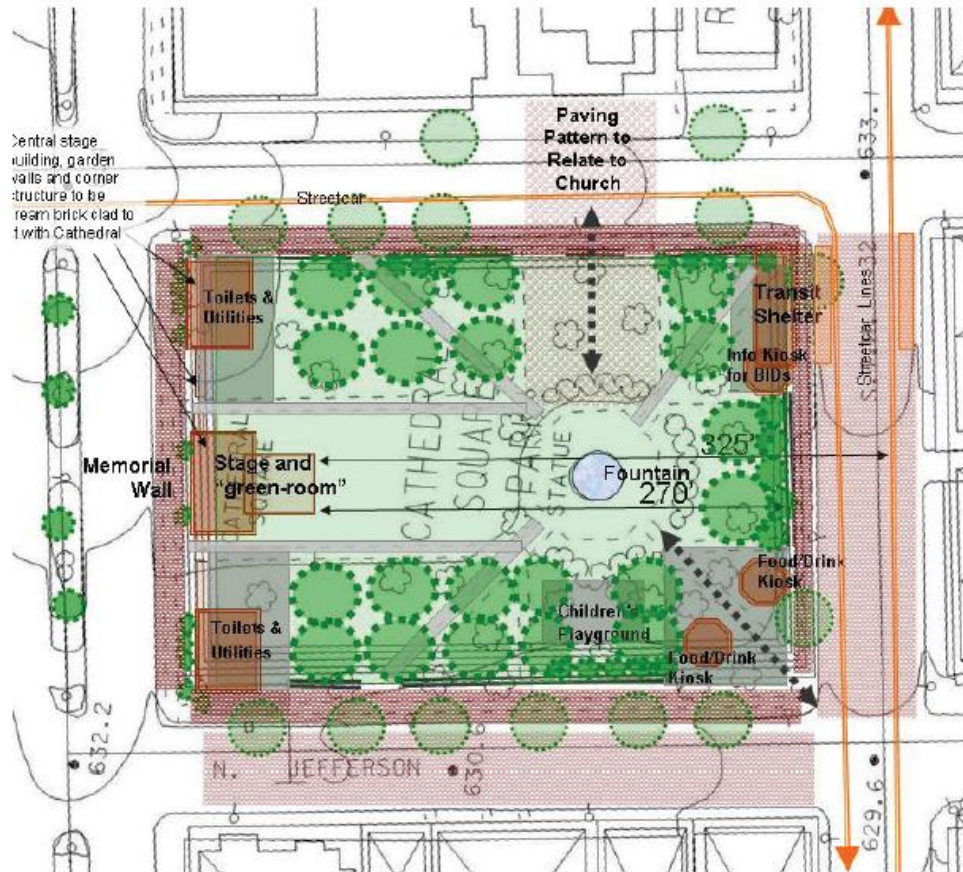
Perimeter Sidewalk &
Pathways in Poor Condition,
Temporary Stage,
Portable Restrooms &
an Abandoned Fountain



2010 Downtown Plan: Cathedral Square

- Cathedral Square is a successful “place” downtown. Expand its influence through substantial streetscaping along Wells, Jefferson, and Kilbourn.
- Support efforts to improve the physical condition of Cathedral Square.
- Establish Cathedral Square as a key streetcar stop.
- Add permanent amenities or public art to Cathedral Square where it would not interfere with event staging.
- Consider a curbless street along Jefferson between Kilbourn and Wells.
- Improve night lighting (in an artistic way) where possible.

2010 Downtown Plan: Cathedral Square



A conceptual plan for a revitalized Cathedral Square



Detailing quality similar to that found at Burns Triangle could be employed at Cathedral Square.

Cathedral Square Friends - Proposed Project Phases

FUTURE PHASES

PHASE 3: NEW FEATURES

- Permanent Stage, Low Garden Walls,
- Water Feature/Fountain,
- + • Small building for Restrooms, Storage Space, & Small Concession
- Create Paver Terrace, Secondary Paths
- Add Public Art

PHASE 2: UPGRADE LAYOUT

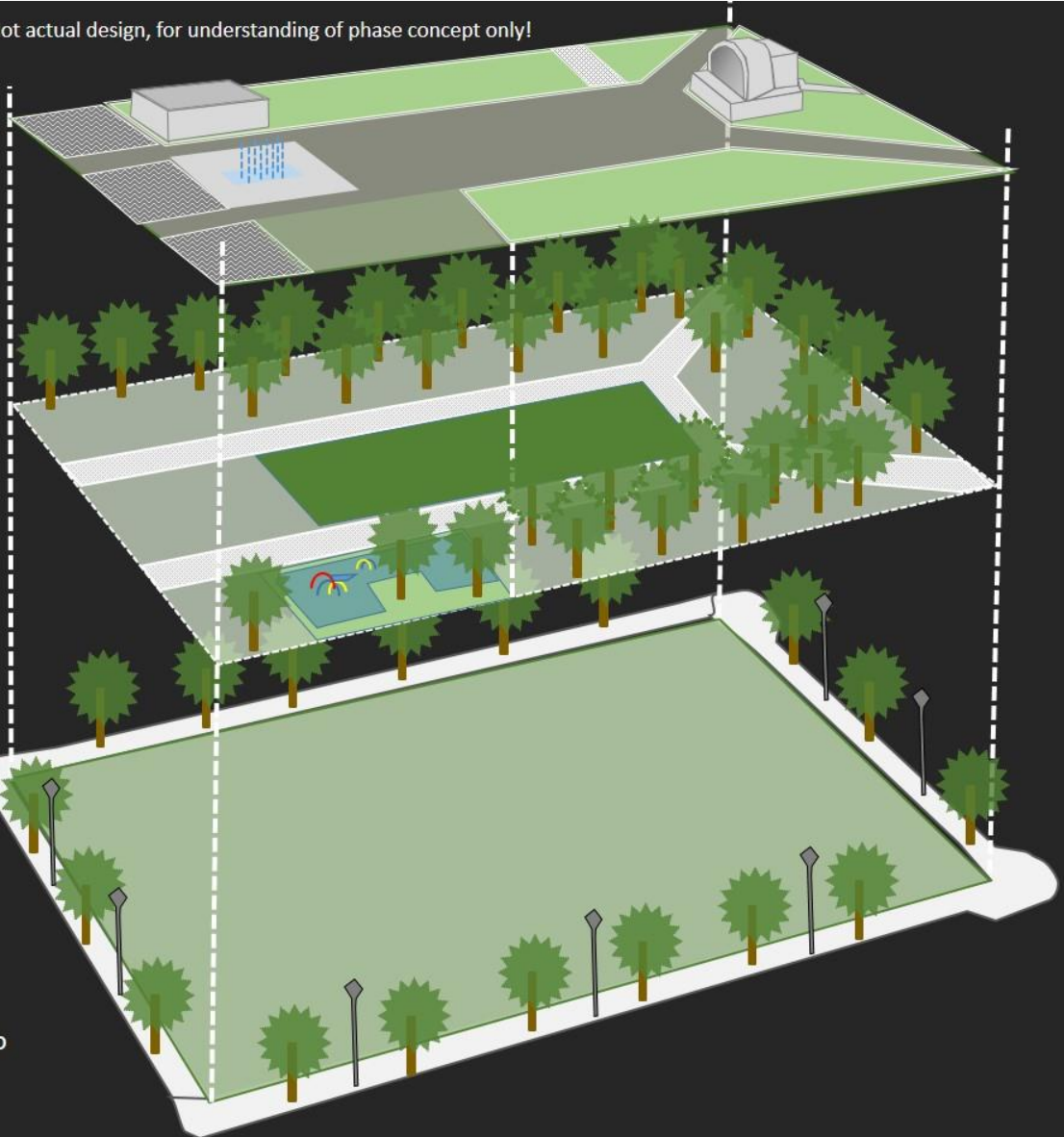
- Remove Abandoned Fountain & Excess Pavement, Rebuild Main Walkways, Add Curbing at Corners Walks
- Add Trees to Improve Perimeter Grove Improved Lawns and Ground Plantings,
- + • Add Locations for Public Art or Decorative Lighting Consider Irrigation and Other Utility Upgrades
- Include Waste Cans, Signage, Information

CURRENT PHASE

PHASE 1: STREET FRAME

- Existing perimeter sidewalk and most curbs removed.
- Upgraded quality sidewalk and new curbs
- Incorporate existing trees where possible
- Add new trees where needed.
- Add Base planting in new tree wells,
- Benches, trash receptacles and other elements
- Some utilities will be adjusted to ensure better access to the square.

Not actual design, for understanding of phase concept only!



PHASES / POSSIBLE COMPONENTS to *ENHANCING THE SQUARE*¹⁰

Cathedral Square Friends Plan

ELEMENTS OF A STREETSCAPE PROJECT

Pedestrian Level Lighting
- Re-space if needed,
- Possibly Upgrade Lamps to LED

**Brackets for Flower
Baskets or Banners**

Street Furniture

Curb Style
- Standard or Rolled Edge

Terrace Area
(between curb & sidewalk)
Paving Treatment
- Same as sidewalk

**BLENDED TERRACE &
SIDEWALK APPROACH**



Trees – Add as Needed

Tree Border (Salt-Lip style)

**Tree Well Ground
Cover**

**Trash Container and
Mounting Pad**

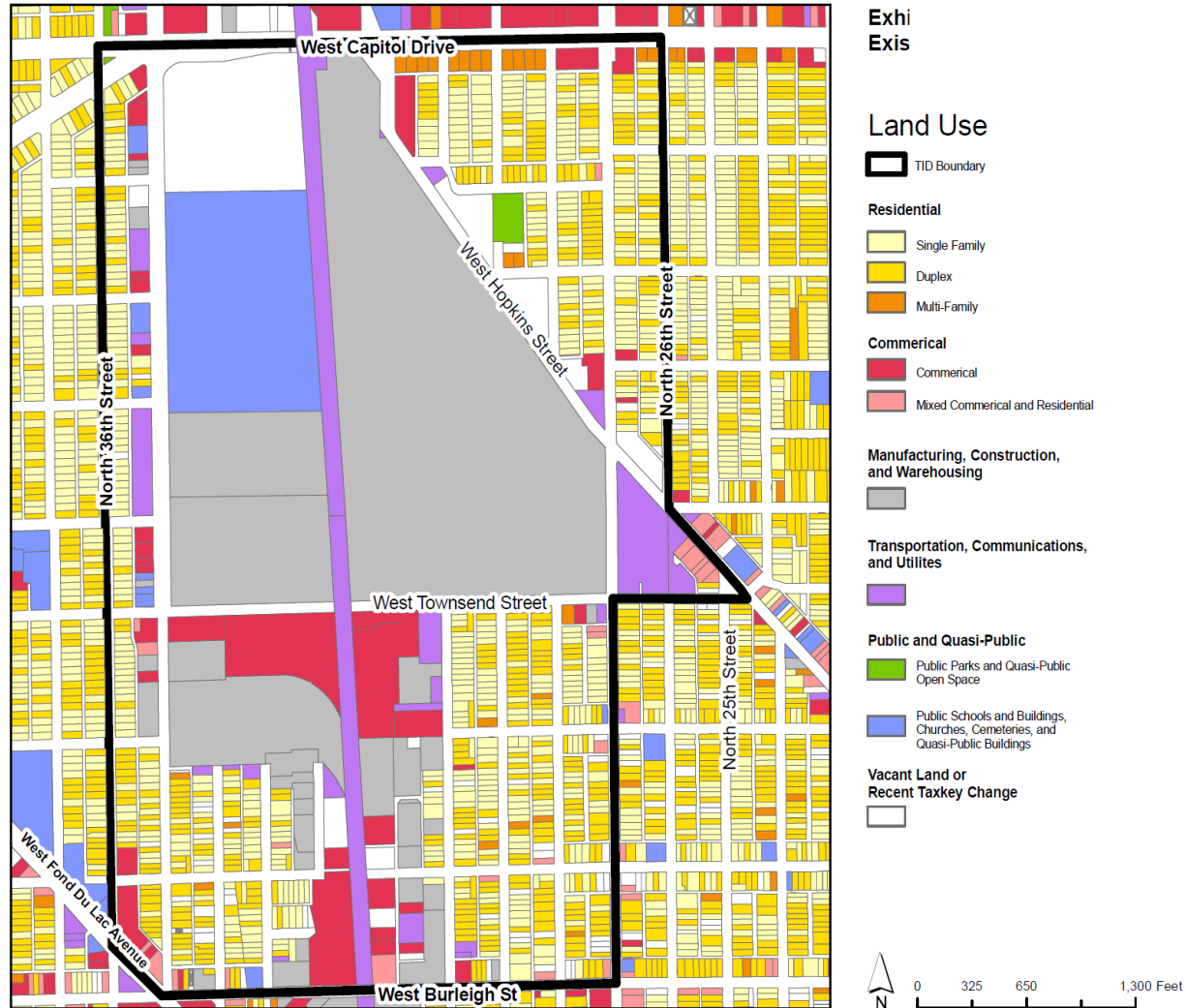
Property Line

Sidewalk Paving
- Same as Terrace Area

Lawn Edge

**Lawn Perimeter
Feature** – Special Features
at Corners of Square

TID 74: North 35th Street and West Capitol Drive



- Created in 2009
- \$24,752,062 in outstanding debt

TID 49: Cathedral Square - Budget and Feasibility

Parking Structure	\$25,400,000
Streetcar Infrastructure (Amend No. 1)	\$9,700,000
Public Infrastructure (Amend No. 2)	\$1,850,000
Donations to TID 74	\$7,754,926
TOTAL	\$44,704,926

TID 49 projected to pay off by 2025 (Year 24 of the District)

MASTER PLAN DEVELOPMENT PROCESS

Cathedral Square Friends is in discussion with Milwaukee County Parks regarding a long range planning process.

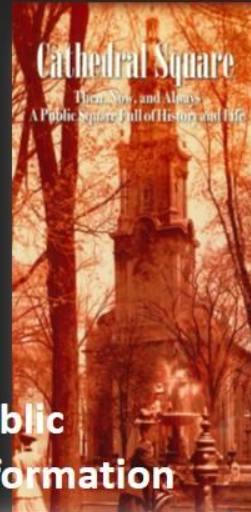


East Town, Milwaukee Downtown, as well as with the local community will continue to be a vital part of the process in future public meetings.

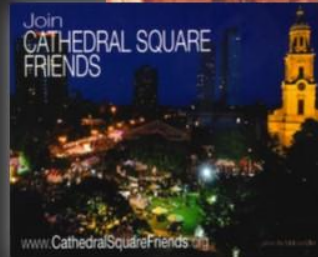


“Cathedral Square Friends” All Volunteer, Non-Profit Group

Public Involvement



Public Information



[Leave a Comment](#)

© Last Updated: July 8, 2017 by Cathedral Square Friends, Inc.

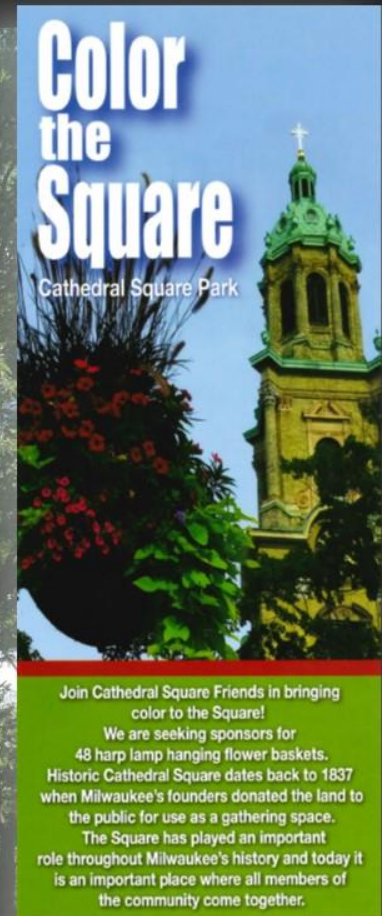
First Public Meeting of Cathedral Square Friends –May 17, 2017

On Wednesday, May 17 2017, Cathedral Square Friends held a public community engagement meeting at the atrium of the Cathedral of St John, located on Cathedral Square. Approximately 50 people attended the event, which lasted about 90 minutes.... [Read More](#)



“Cathedral Square Friends” All Volunteer, Non-Profit Group

Color the Square Project



Flowers in the summers of 2018 & 2019, with funds raised for 2020 and beyond

Cathedral Square Friends - Proposed Phase 1 Project

Explore Elements of Square – Paving Materials and Detail



Existing
Condition



7Seventy7 Bldg.



Clybourn Lakefront Gateway



Wisconsin Avenue



Broadway at Mason



TREE WELL & PERIMETER DETAILS – Example of Options

Cathedral Square Friends - Proposed Phase 1 Project

Explore Streetscaping Furnishings Examples



Existing Wire
Metal Baskets



Waste Receptacles



Stationary Seating



Example of Options



Cathedral Square Friends – Future Phases

Phase 2 – Permanency & Quality to Improve our Civic Square

Examples of Public Spaces with more “finished” quality



Possible Enhancements to Consider:

- Rebuild Main Walkways, Add Curbing on Walks
- Add Trees to Improve Perimeter Grove
- Improve Lawns and Ground Plantings



Cathedral Square Friends – Future Phases

Phase 2 - Respect Elements of Square – Monuments and Plaques



The significant historical story of Joshua Glover could be enhanced and better memorialized.



Existing Monuments and Plaques would be respected, retained and appropriately enhanced if needed.

Not part of Phase 1
Concepts and Ideas for Future Phases of Master Plan.

Cathedral Square Friends – Future Phases

Phase 3- Future Opportunities for Improvements – Accessory Pavilion?



Construct small building to better serve activation of the Square, which includes:

- Permanent restroom facilities.
- Storage area for equipment for Square.
- Small concession area to allow active staffing of Square.
- Location for additional portable toilets to be screened and “nested in” to the design
- Include utility room for water and electrical service to serve Square.



Example Image Above

Not uncommon in many Milwaukee County Parks – Juneau Park Example below



Cathedral Square Friends – Future Phases

Phase 3 - Future Opportunities for Improvements – Permanent Stage?



Construct New Permanent Stage:

- Replace existing temporary stage (constructed each year over abandoned 1960's era fountain.)
- Adjusted location to create a better central lawn area for concert viewing.
- Similar size and scale to existing, however possibly incorporating in some back of house instead of temporary trailers.
- Ramping to allow direct access to a new street loading zone to avoid concert trucks from backing down pedestrian paths and harming lawn.
- Create under the stage storage for events.

Example Images



Cathedral Square Friends – Future Phases

Phase 3 - Future Opportunities for Improvements – New Water Feature?



Example Images – Beauty & Play!

- Removal & replacement of abandoned 1969 era fountain. Existing and adjacent hardscape would be removed.
- Relocation to better suited location with use of Square. (Note: Existing location is not historically accurate location.)
- Future water feature could consider a traditional fountain or more multi-purpose splash pad type installation.

