

W. Marion

(60' R.O.W.)

St.

St.

(60' R.O.W.)

N. 45th

W. Olive

St.

(60' R.O.W.)

( MAP 1 OF 3 )

EXHIBIT "A"

FILE NO. 020522

INFRASTRUCTURE SERVICES DIVISION

MILWAUKEE, WISCONSIN

ASSIGNED TO: W.E. FUCHS

CH'K'D. BY: M.C. WILLIAMS

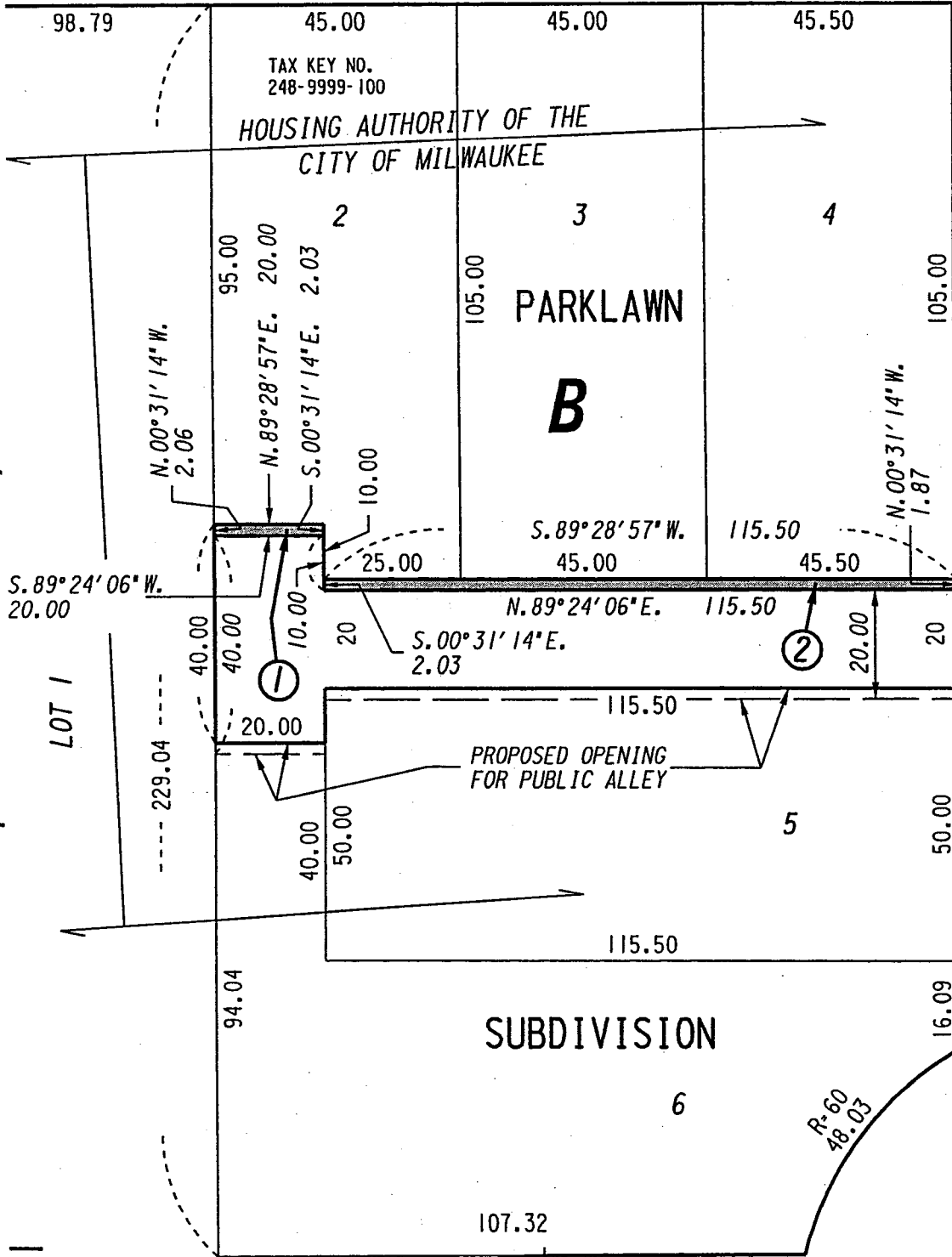
DRAWN BY: W.E.F.

DATE: SEPT. 26, 2002

PROJECT/GRANT NO.: WK52337163

SCALE: 1" = 30'

APPROVED BY:



PORTION OF PUBLIC ALLEY PROPOSED TO BE VACATED

W. Marion St.

(60' R.O.W.)

St.

St.

(60' R.O.W.)

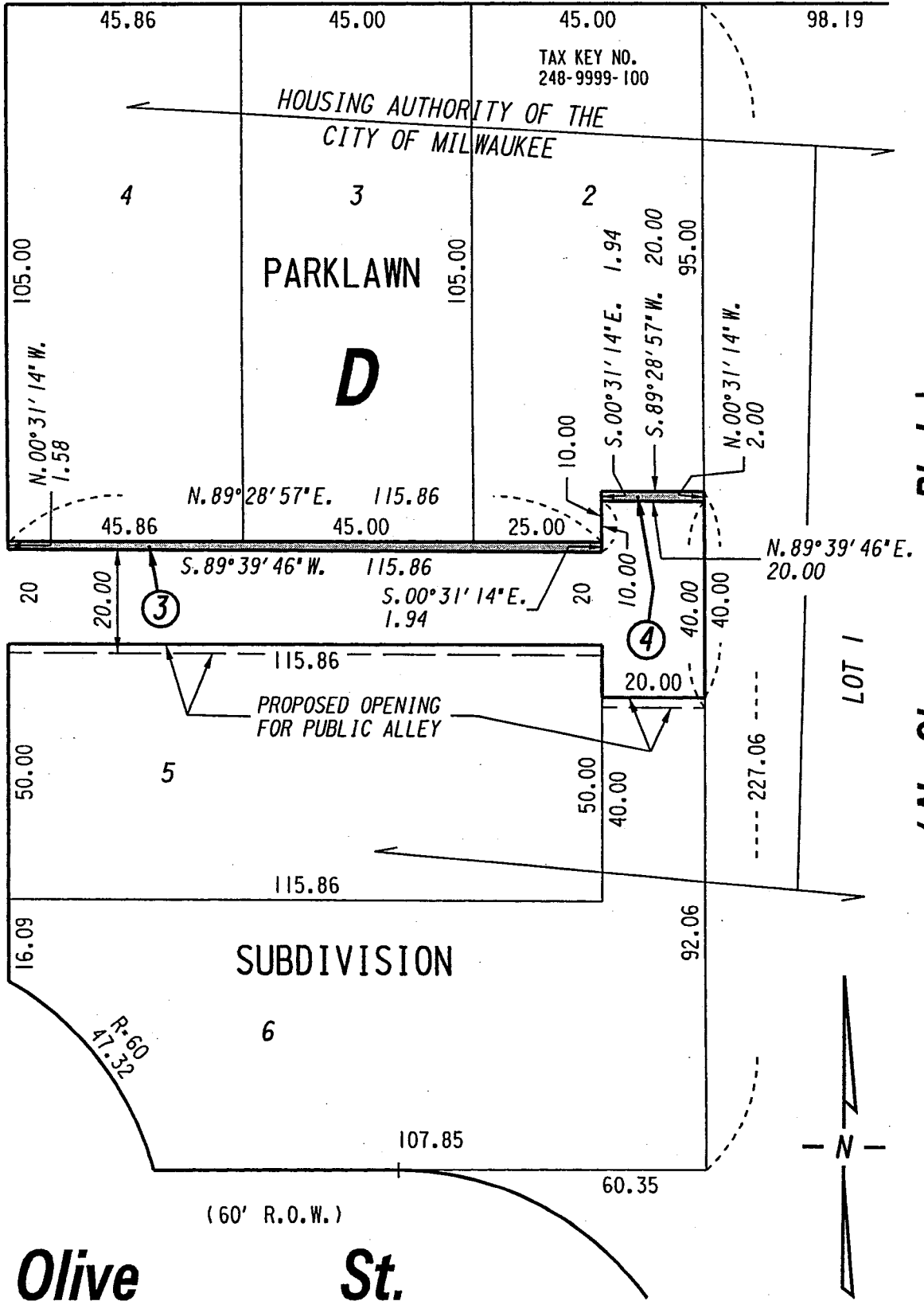
N. 45th

W. Olive St.

St.

(60' R.O.W.)

( N. Sherman Blvd )



( MAP 2 OF 3 )

EXHIBIT "A"

FILE NO. 020522

INFRASTRUCTURE SERVICES DIVISION

MILWAUKEE, WISCONSIN

ASSIGNED TO: W.E. FUCHS

CH'K'D. BY: M.C. WILLIAMS

DRAWN BY: W.E.F.

DATE: SEPT. 26, 2002

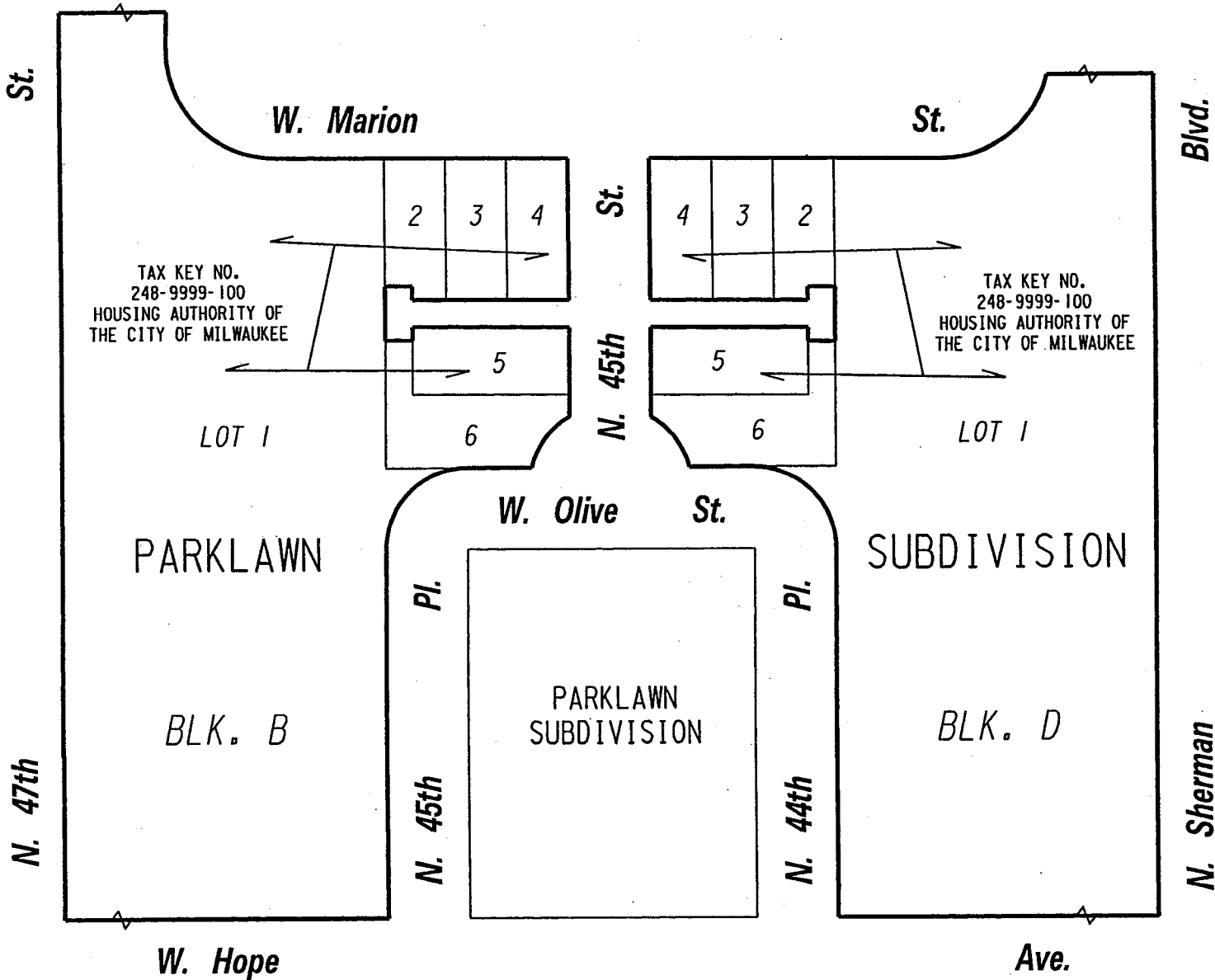
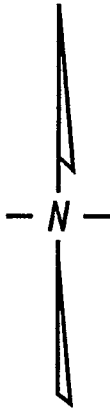
PROJECT/GRANT NO.: WK52337163

SCALE: 1" = 30'

APPROVED BY:



PORTION OF PUBLIC ALLEY PROPOSED TO BE VACATED



**( Ownership layout )**

**( MAP 3 OF 3 )**

**EXHIBIT "A"**

**FILE NO. 020522**

**INFRASTRUCTURE SERVICES DIVISION**

**MILWAUKEE, WISCONSIN**

ASSIGNED TO: W.E. FUCHS

CH'K'D. BY: M.C. WILLIAMS

DRAWN BY: W.E.F.

DATE: SEPT. 26, 2002

PROJECT/GRANT NO.: WK52337163

SCALE: 1" = 30'

APPROVED BY: