

Historic Preservation Commission Meeting

April 19, 2010

- Good Afternoon!
Please sign in at the door
- If you wish to speak on an issue or have your opinion noted by the commission, please fill out a form at the door and hand it to us





Hummel Bldg. ca. 1950



IVOC Behavioral Health Clinic

CENTRAL

No Left Turn













ACCURATE
KEY & LOCK

SALLE POINTE
Pub

SALLE POINTE
Pub

SALLE POINTE
Pub



North St

SPEED
LIMIT
30

**OPEN
FOR
BUSINESS**

good life
in the
Pete's

2141





Wm SCHLITZ

Sobelman's
Pub & Grill
Home of the Famous
Sobelman's Burger

Sobelman's
S

Sobelman's

SHAN

Coors
LIGHT

Bluebird

Bluebird

ONE-ON

ONE-ON

ONE-ON

ONE-ON

ONE-ON

ONE-ON

ONE-ON

ONE-ON

ONE-ON

ONE-ON

ONE-ON

ONE-ON

ONE-ON

ONE-ON

ONE-ON

ONE-ON

ONE-ON

ONE-ON

ONE-ON

ONE-ON

ONE-ON

ONE-ON

ONE-ON

ONE-ON

ONE-ON

ONE-ON

ONE-ON

ONE-ON

ONE-ON

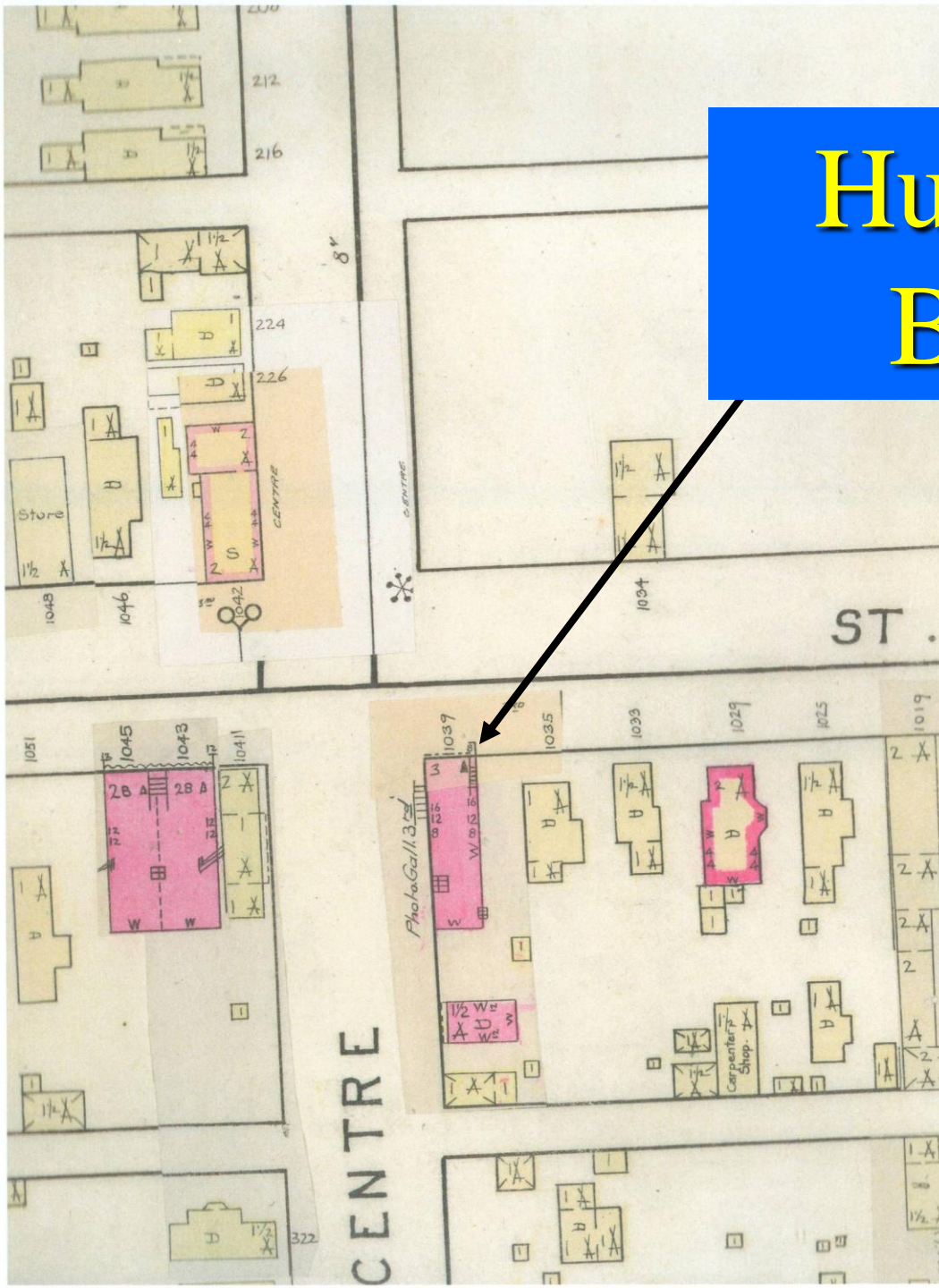
ONE-ON

ONE-ON



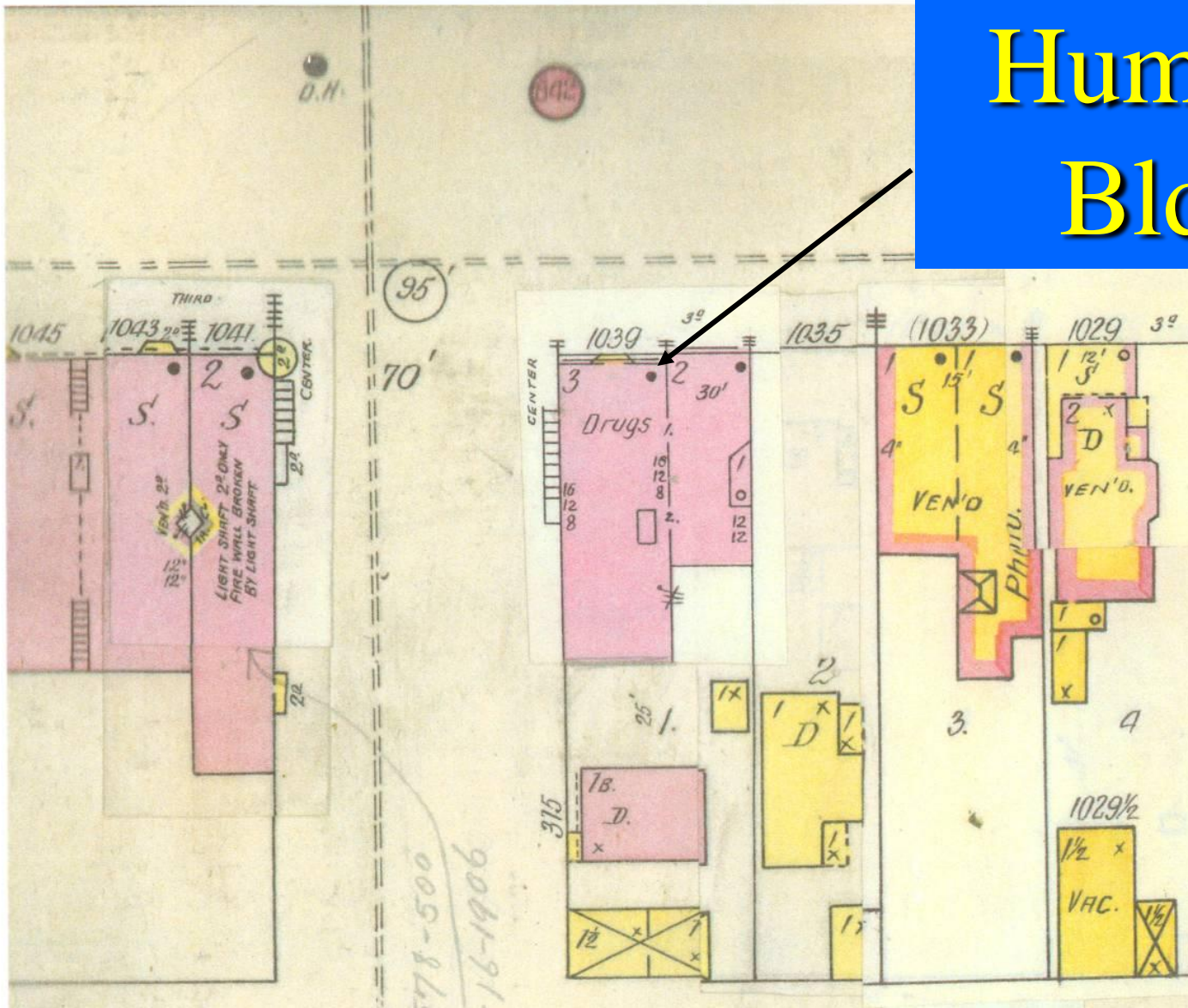
TRADE MARK SCHLITZ

Hummel
Bldg.



Rascher's
Insurance
Map 1888

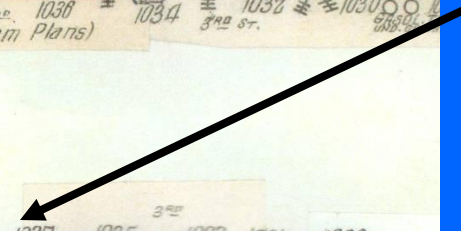
Hummel Bldg.



Sanborn Insurance Map 1894

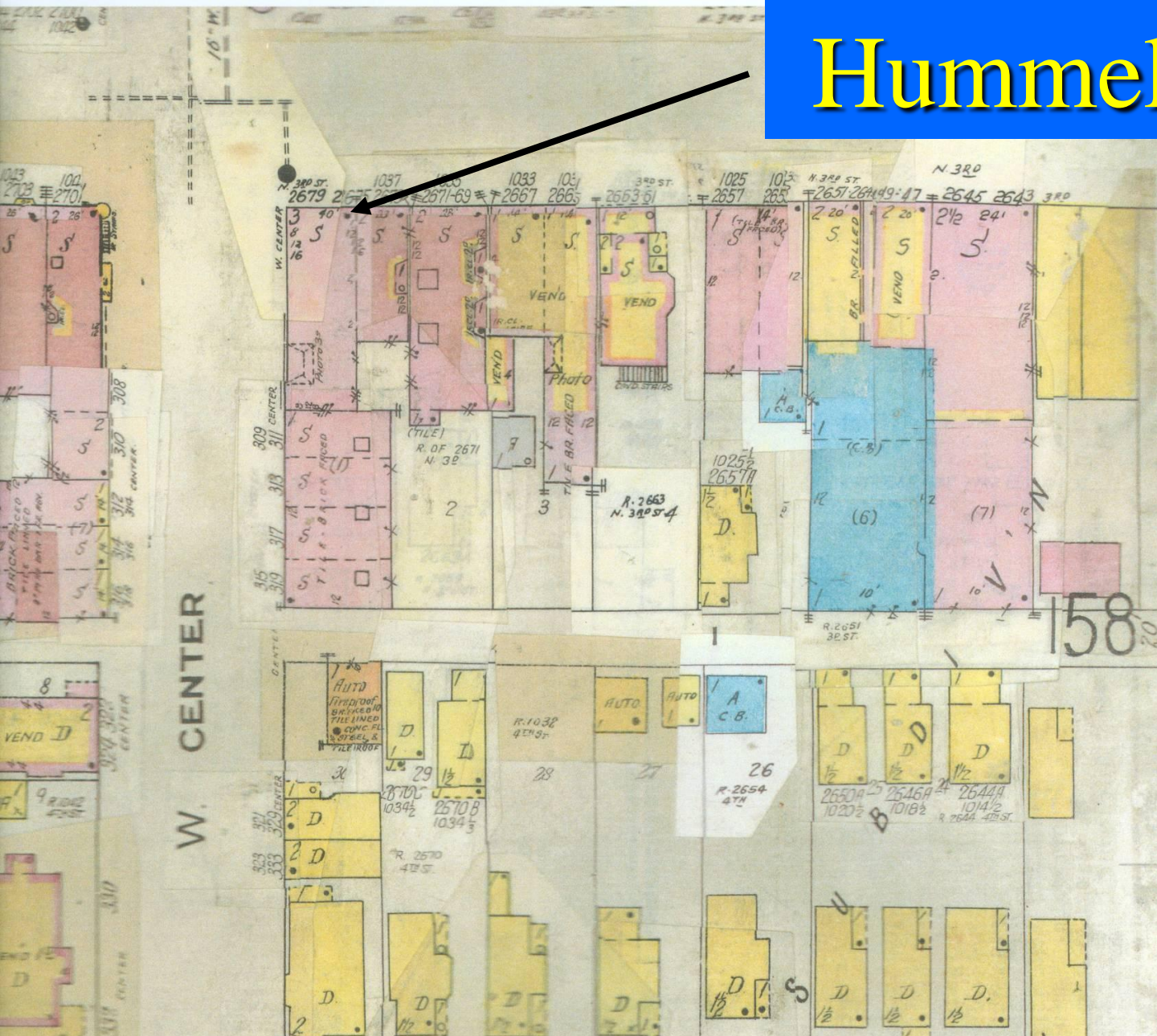


Hummel Bldg.



Sanborn Insurance Map 1910-26

Hummel Bldg.



Sanborn Insurance Map 1910-61



IVOC Behavioral Health Clinic

CENTRAL

No Left Turn