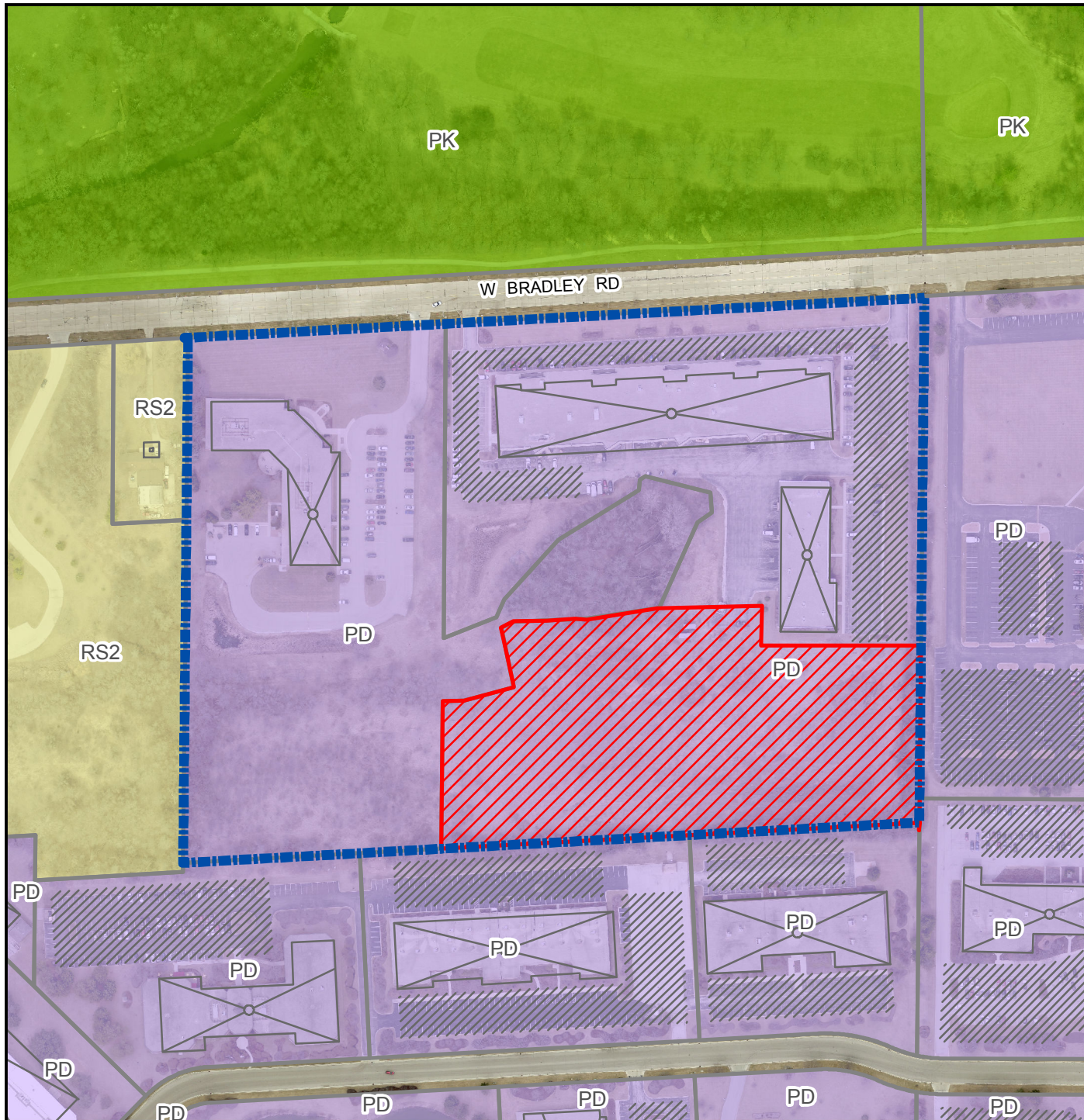




**File No. 201471
 2nd Amend. To GPD
 Park Place Tech. Center and DPD - Phase 3
 11601-11745 W. Bradley Rd.
 June 2021**




Legend





Label

-  GPD Boundary
-  Phase 3 DPD Boundary

Zoning

-  Unknown or pending zone

Zoning Category

-  Residential - single family
-  Residential - two family
-  Residential - multi-family
-  Residential - residence and office
-  Central business district - civic activity
-  Central business district - high-density residential
-  Central business district - major retail
-  Central business district - mixed activity
-  Central business district - neighborhood retail
-  Central business district - office and service
-  Central business district - residential and specialty use
-  Central business district - warehousing and light manufacturing
-  Commercial - neighborhood shopping
-  Commercial - local business
-  Commercial - commercial service
-  Commercial - regional business
-  Industrial - commercial
-  Industrial - office
-  Industrial - light
-  Industrial - mixed
-  Industrial - heavy
-  Special - parks
-  Special - institutional
-  Special - planned development
-  Special - redevelopment district

