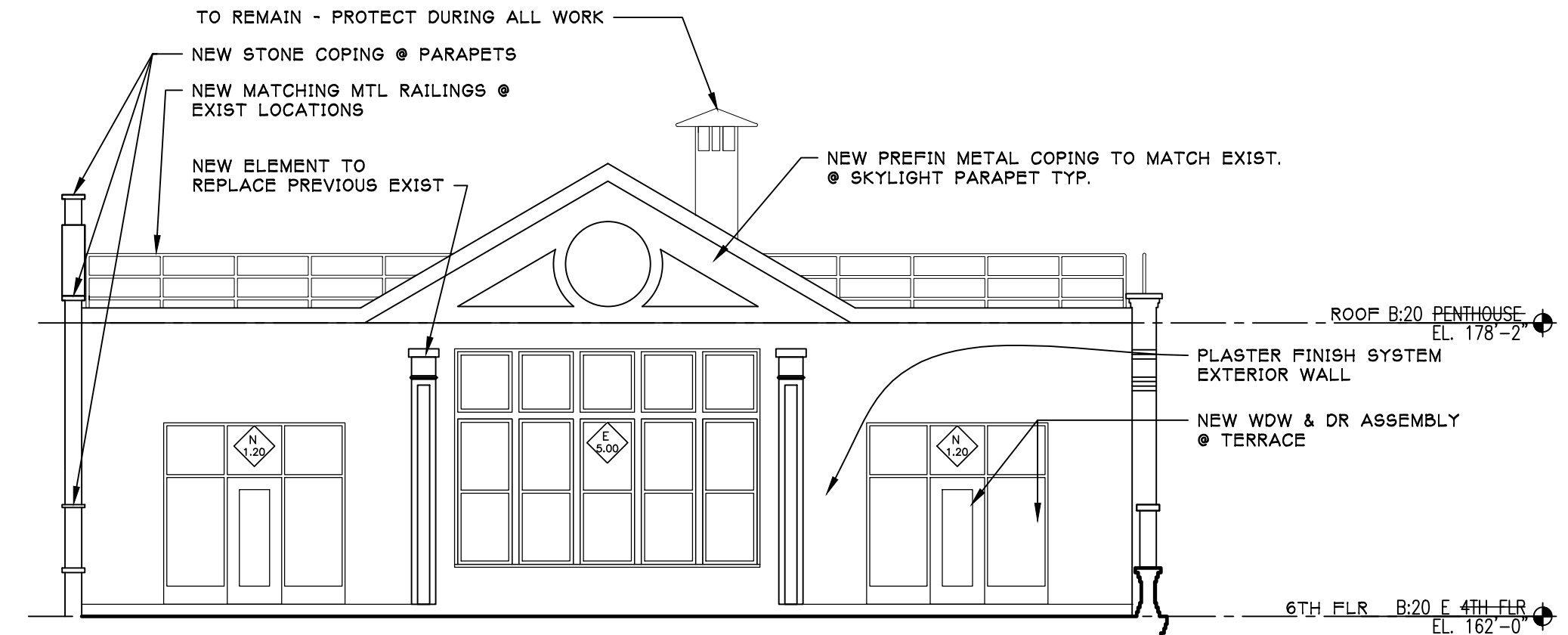


EXTERIOR WINDOW SCHEDULE

KEY	MFR.	SERIES	COLORS		REMARKS
			INTERIOR	EXTERIOR	
E 1.00	FRACO	NX-280	COLONIAL WHITE	RIVER ROUGE RED	
E 1.10	FRACO	NX-280	COLONIAL WHITE	RIVER ROUGE RED	
E 1.20	FRACO	NX-280	COLONIAL WHITE	RIVER ROUGE RED	
E 1.22	FRACO	NX-280	COLONIAL WHITE	RIVER ROUGE RED	
E 1.23	FRACO	NX-280	COLONIAL WHITE	RIVER ROUGE RED	
E 1.30	FRACO	NX-280	COLONIAL WHITE	RIVER ROUGE RED	
E 1.40	FRACO	NX-280	COLONIAL WHITE	RIVER ROUGE RED	
E 1.41	FRACO	NX-280	COLONIAL WHITE	RIVER ROUGE RED	
E 1.50	FRACO	NX-280	COLONIAL WHITE	RIVER ROUGE RED	
E 1.60	FRACO	NX-280	COLONIAL WHITE	RIVER ROUGE RED	
E 2.01	FRACO	NX-280	COLONIAL WHITE	RIVER ROUGE RED	
E 2.02	FRACO	NX-280	COLONIAL WHITE	RIVER ROUGE RED	
E 2.20	FRACO	NX-280	COLONIAL WHITE	RIVER ROUGE RED	
E 2.21	FRACO	NX-280	COLONIAL WHITE	RIVER ROUGE RED	
E 2.22	FRACO	NX-280	COLONIAL WHITE	RIVER ROUGE RED	
E 2.23	FRACO	NX-280	COLONIAL WHITE	RIVER ROUGE RED	
E 2.30	FRACO	NX-280	COLONIAL WHITE	RIVER ROUGE RED	
E 2.40	FRACO	NX-280	COLONIAL WHITE	RIVER ROUGE RED	
E 2.45	FRACO	NX-280	COLONIAL WHITE	RIVER ROUGE RED	
E 2.46	FRACO	NX-280	COLONIAL WHITE	RIVER ROUGE RED	
E 2.50	FRACO	NX-280	COLONIAL WHITE	RIVER ROUGE RED	
E 2.51	FRACO	NX-280	COLONIAL WHITE	RIVER ROUGE RED	
E 2.70	FRACO	NX-280	COLONIAL WHITE	RIVER ROUGE RED	
E 2.80	FRACO	NX-280	COLONIAL WHITE	RIVER ROUGE RED	
E 2.90	FRACO	NX-280	COLONIAL WHITE	RIVER ROUGE RED	
E 2.91	FRACO	NX-280	COLONIAL WHITE	RIVER ROUGE RED	
E 3.00	FRACO	NX-280	COLONIAL WHITE	RIVER ROUGE RED	
E 3.10	FRACO	NX-280	COLONIAL WHITE	RIVER ROUGE RED	
E 3.20	FRACO	NX-280	COLONIAL WHITE	RIVER ROUGE RED	
E 3.30	FRACO	NX-280	COLONIAL WHITE	RIVER ROUGE RED	
E 3.40	FRACO	NX-280	COLONIAL WHITE	RIVER ROUGE RED	
E 3.50	FRACO	NX-280	COLONIAL WHITE	RIVER ROUGE RED	
E 4.00	FRACO	NX-280	COLONIAL WHITE	RIVER ROUGE RED	
E 4.10	FRACO	NX-280	COLONIAL WHITE	RIVER ROUGE RED	
E 5.00	FRACO	NX-3800	COLONIAL WHITE	FASHION GREY	
E 5.10	FRACO	NX-280	COLONIAL WHITE	RIVER ROUGE RED	
N 1.00	FRACO	NX-280	COLONIAL WHITE	RIVER ROUGE RED	
N 1.10	FRACO	NX-280	COLONIAL WHITE	RIVER ROUGE RED	
N 1.20	FRACO	NX-280	COLONIAL WHITE	RIVER ROUGE RED	
N 1.30	FRACO	NX-3800	COLONIAL WHITE	FASHION GREY	
N 1.90	FRACO	NX-3800	COLONIAL WHITE	FASHION GREY	

NOTES:
 1. WINDOWS SHOWN APPROXIMATE DIMENSIONS ONLY FOR PRICING. EACH WINDOW OPENING TO BE FIELD VERIFIED.
 2. TYPICAL REPLACEMENT UNITS SHALL BE THERMALLY BROKEN ALUMINUM WINDOWS WITH CLEAR LOW E INSULATING GLASS.
 3. REPLACEMENT WINDOWS SHALL MATCH EXISTING CONFIGURATIONS AS CLOSELY AS POSSIBLE - SEE EXISTING AND PROPOSED DETAILS
 4. ALL WINDOWS TO BE WEATHER TIGHT AT THE COMPLETION OF EACH INSTALLATION
 5. GLAZING & EXPOSED FINISHES TO BE FREE OF LABELS, GLUE AND PACKING MATERIALS AT THE COMPLETION OF INSTALLATION - INTERIOR & EXTERIOR FACES
 6. WINDOWS IN RM 1101 COMMERCIAL 1102 COMMERCIAL 1113 ENTRANCE 1115 ENTRANCE 1116 CORRIDOR PER DETAIL 7/A206
 7. WINDOWS IN FUTURE TENANT SPACE PER DETAILS 2 S, J, M & H / A206
 8. ALL OTHER WINDOWS TO RECEIVE DRYWALL RETURNS & GRANITE SILLS PER DETAIL 8/A206.



A.1 EXTERIOR BUILDING ELEVATION
SCALE: 1/8" = 1' - 0"

1 WINDOW SCHEDULE
SCALE: N/A

- WINDOWS SHOWN APPROXIMATE DIMENSIONS ONLY FOR PRICING. EACH WINDOW OPENING TO BE FIELD VERIFIED.
- TYPICAL REPLACEMENT UNITS SHALL BE THERMALLY BROKEN ALUMINUM WINDOWS WITH CLEAR LOW E INSULATING GLASS W/ MINIMUM LIGHT TRANSMITTANCE OF 72%.
- REPLACEMENT WINDOWS SHALL MATCH EXISTING CONFIGURATIONS AS CLOSELY AS POSSIBLE - SEE EXISTING AND PROPOSED DETAILS
- ALL WINDOWS TO BE WEATHER TIGHT AT THE COMPLETION OF EACH INSTALLATION
- GLAZING & EXPOSED FINISHES TO BE FREE OF LABELS, GLUE AND PACKING MATERIALS AT THE COMPLETION OF INSTALLATION - INTERIOR & EXTERIOR FACES

2 WINDOW REPLACEMENT NOTES
SCALE: N/A



A EAST EXTERIOR BUILDING ELEVATION
SCALE: 1/8" = 1' - 0"

The Brewhouse
ALL SUITES HOTEL
1203 NORTH 10TH STREET
MILWAUKEE, WISCONSIN

Project No. 1001-00-1008
 Plot Date: 4/3/2012 4:13 PM
 Drawn by: crd

Issue dates:
 2010.11.12 PRELIMINARY BIDDING
 2011.07.28 BID PACKAGE #1
 2011.09.19 BID PACKAGE #2
 2012.04.02 HPC SUBMITTAL

Sheet Title
BUILDING EXTERIOR ELEVATION

Sheet No.
A201

EXTERIOR WINDOW SCHEDULE

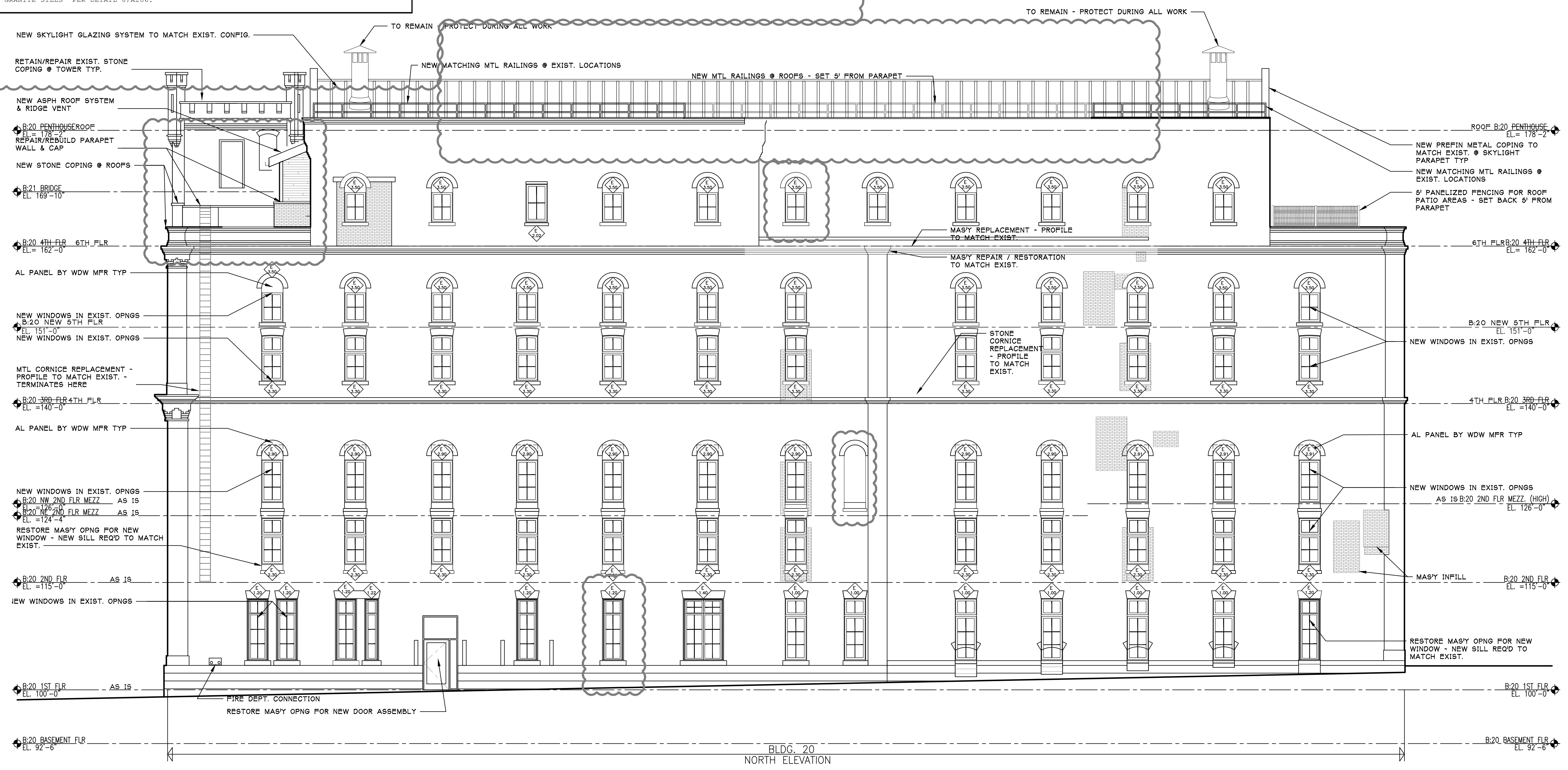
KEY	MFR.	SERIES	COLORS		REMARKS
			INTERIOR	EXTERIOR	
E 1.00	TRACO	NX-280	COLONIAL WHITE	RIVER ROUGE RED	
E 1.10	TRACO	NX-280	COLONIAL WHITE	RIVER ROUGE RED	
E 1.20	TRACO	NX-280	COLONIAL WHITE	RIVER ROUGE RED	
E 1.22	TRACO	NX-280	COLONIAL WHITE	RIVER ROUGE RED	
E 1.23	TRACO	NX-280	COLONIAL WHITE	RIVER ROUGE RED	
E 1.30	TRACO	NX-280	COLONIAL WHITE	RIVER ROUGE RED	
E 1.40	TRACO	NX-280	COLONIAL WHITE	RIVER ROUGE RED	
E 1.41	TRACO	NX-280	COLONIAL WHITE	RIVER ROUGE RED	
E 1.50	TRACO	NX-280	COLONIAL WHITE	RIVER ROUGE RED	
E 1.60	TRACO	NX-280	COLONIAL WHITE	RIVER ROUGE RED	
E 2.01	TRACO	NX-280	COLONIAL WHITE	RIVER ROUGE RED	
E 2.02	TRACO	NX-280	COLONIAL WHITE	RIVER ROUGE RED	
E 2.20	TRACO	NX-280	COLONIAL WHITE	RIVER ROUGE RED	
E 2.21	TRACO	NX-280	COLONIAL WHITE	RIVER ROUGE RED	
E 2.22	TRACO	NX-280	COLONIAL WHITE	RIVER ROUGE RED	
E 2.23	TRACO	NX-280	COLONIAL WHITE	RIVER ROUGE RED	
E 2.30	TRACO	NX-280	COLONIAL WHITE	RIVER ROUGE RED	
E 2.40	TRACO	NX-280	COLONIAL WHITE	RIVER ROUGE RED	
E 2.45	TRACO	NX-280	COLONIAL WHITE	RIVER ROUGE RED	
E 2.46	TRACO	NX-280	COLONIAL WHITE	RIVER ROUGE RED	
E 2.50	TRACO	NX-280	COLONIAL WHITE	RIVER ROUGE RED	
E 2.51	TRACO	NX-280	COLONIAL WHITE	RIVER ROUGE RED	
E 2.70	TRACO	NX-280	COLONIAL WHITE	RIVER ROUGE RED	
E 2.80	TRACO	NX-280	COLONIAL WHITE	RIVER ROUGE RED	
E 2.90	TRACO	NX-280	COLONIAL WHITE	RIVER ROUGE RED	
E 2.91	TRACO	NX-280	COLONIAL WHITE	RIVER ROUGE RED	
E 3.00	TRACO	NX-280	COLONIAL WHITE	RIVER ROUGE RED	
E 3.10	TRACO	NX-280	COLONIAL WHITE	RIVER ROUGE RED	
E 3.20	TRACO	NX-280	COLONIAL WHITE	RIVER ROUGE RED	
E 3.30	TRACO	NX-280	COLONIAL WHITE	RIVER ROUGE RED	
E 3.40	TRACO	NX-280	COLONIAL WHITE	RIVER ROUGE RED	
E 3.50	TRACO	NX-280	COLONIAL WHITE	RIVER ROUGE RED	
E 4.00	TRACO	NX-280	COLONIAL WHITE	RIVER ROUGE RED	
E 4.10	TRACO	NX-280	COLONIAL WHITE	RIVER ROUGE RED	
E 5.00	TRACO	NX-3800	COLONIAL WHITE	FASHION GREY	
E 5.10	TRACO	NX-280	COLONIAL WHITE	RIVER ROUGE RED	
N 1.00	TRACO	NX-280	COLONIAL WHITE	RIVER ROUGE RED	
N 1.10	TRACO	NX-280	COLONIAL WHITE	RIVER ROUGE RED	
N 1.20	TRACO	NX-280	COLONIAL WHITE	RIVER ROUGE RED	
N 1.30	TRACO	NX-3800	COLONIAL WHITE	FASHION GREY	
N 1.90	TRACO	NX-3800	COLONIAL WHITE	FASHION GREY	

NOTES:
 1. WINDOWS SHOWN APPROXIMATE DIMENSIONS ONLY FOR PRICING. EACH WINDOW OPENING TO BE FIELD VERIFIED.
 2. TYPICAL REPLACEMENT UNITS SHALL BE THERMALLY BROKEN ALUMINUM WINDOWS WITH CLEAR LOW E INSULATING GLASS.
 3. REPLACEMENT WINDOWS SHALL MATCH EXISTING CONFIGURATIONS AS CLOSELY AS POSSIBLE - SEE EXISTING AND PROPOSED DETAILS
 4. ALL WINDOWS TO BE WEATHER TIGHT AT THE COMPLETION OF EACH INSTALLATION
 5. GLAZING & EXPOSED FINISHES TO TO FREE OF LABELS, GLUE AND PACKING MATERIALS AT THE COMPLETION OF INSTALLATION - INTERIOR & EXTERIOR FACES
 6. WINDOWS IN RM 1101 COMMERCIAL 1102 COMMERCIAL 1113 ENTRANCE 1115 ENTRANCE 1116 CORRIDOR PER DETAIL 7/A206
 7. WINDOWS IN FUTURE TENANT SPACE PER DETAILS 2 S, J, M & H / A206
 8. ALL OTHER WINDOWS TO RECEIVE DRYWALL RETURNS & GRANITE SILLS PER DETAIL 8/A206.

2 WINDOW REPLACEMENT NOTES
 SCALE: N/A

- WINDOWS SHOWN APPROXIMATE DIMENSIONS ONLY FOR PRICING. EACH WINDOW OPENING TO BE FIELD VERIFIED.
- TYPICAL REPLACEMENT UNITS SHALL BE THERMALLY BROKEN ALUMINUM WINDOWS WITH CLEAR LOW E INSULATING GLASS W/ MINIMUM LIGHT TRANSMITTANCE OF 72%.
- REPLACEMENT WINDOWS SHALL MATCH EXISTING CONFIGURATIONS AS CLOSELY AS POSSIBLE - SEE EXISTING AND PROPOSED DETAILS
- ALL WINDOWS TO BE WEATHER TIGHT AT THE COMPLETION OF EACH INSTALLATION
- GLAZING & EXPOSED FINISHES TO TO FREE OF LABELS, GLUE AND PACKING MATERIALS AT THE COMPLETION OF INSTALLATION - INTERIOR & EXTERIOR FACES

1 WINDOW SCHEDULE
 SCALE: N/A



B NORTH EXTERIOR BUILDING ELEVATION
 SCALE: 1/8" = 1' - 0"

Project No. 1001-00-1008
 Plot Date: 4/3/2012 4:13 PM
 Drawn by: crd

Issue dates:
 2010.11.12 PRELIMINARY BIDDING
 2011.07.28 BID PACKAGE #1
 2011.09.19 BID PACKAGE #2
 2012.04.02 HPC SUBMITTAL

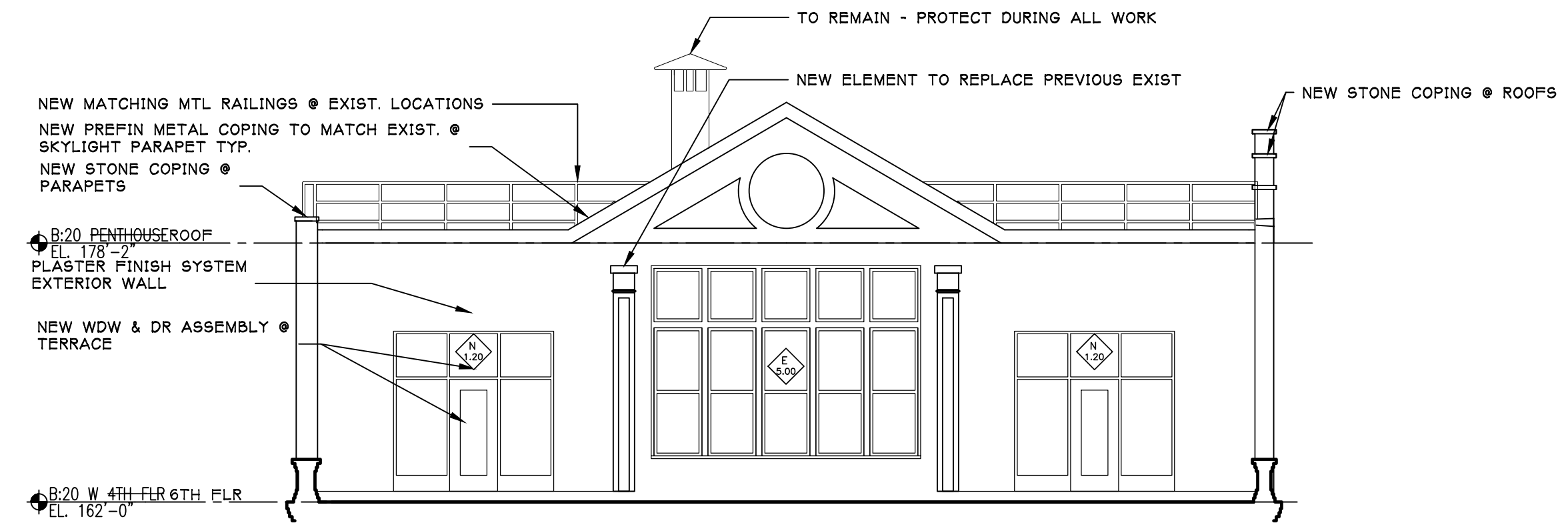
Sheet Title
BUILDING EXTERIOR ELEVATION

Sheet No.
A202

EXTERIOR WINDOW SCHEDULE

KEY	MFR.	SERIES	COLORS		REMARKS
			INTERIOR	EXTERIOR	
E 1.00	TRACO	NX-280	COLONIAL WHITE	RIVER ROUGE RED	
E 1.10	TRACO	NX-280	COLONIAL WHITE	RIVER ROUGE RED	
E 1.20	TRACO	NX-280	COLONIAL WHITE	RIVER ROUGE RED	
E 1.22	TRACO	NX-280	COLONIAL WHITE	RIVER ROUGE RED	
E 1.23	TRACO	NX-280	COLONIAL WHITE	RIVER ROUGE RED	
E 1.30	TRACO	NX-280	COLONIAL WHITE	RIVER ROUGE RED	
E 1.40	TRACO	NX-280	COLONIAL WHITE	RIVER ROUGE RED	
E 1.41	TRACO	NX-280	COLONIAL WHITE	RIVER ROUGE RED	
E 1.50	TRACO	NX-280	COLONIAL WHITE	RIVER ROUGE RED	
E 1.60	TRACO	NX-280	COLONIAL WHITE	RIVER ROUGE RED	
E 2.01	TRACO	NX-280	COLONIAL WHITE	RIVER ROUGE RED	
E 2.02	TRACO	NX-280	COLONIAL WHITE	RIVER ROUGE RED	
E 2.20	TRACO	NX-280	COLONIAL WHITE	RIVER ROUGE RED	
E 2.21	TRACO	NX-280	COLONIAL WHITE	RIVER ROUGE RED	
E 2.22	TRACO	NX-280	COLONIAL WHITE	RIVER ROUGE RED	
E 2.23	TRACO	NX-280	COLONIAL WHITE	RIVER ROUGE RED	
E 2.30	TRACO	NX-280	COLONIAL WHITE	RIVER ROUGE RED	
E 2.40	TRACO	NX-280	COLONIAL WHITE	RIVER ROUGE RED	
E 2.45	TRACO	NX-280	COLONIAL WHITE	RIVER ROUGE RED	
E 2.46	TRACO	NX-280	COLONIAL WHITE	RIVER ROUGE RED	
E 2.50	TRACO	NX-280	COLONIAL WHITE	RIVER ROUGE RED	
E 2.51	TRACO	NX-280	COLONIAL WHITE	RIVER ROUGE RED	
E 2.70	TRACO	NX-280	COLONIAL WHITE	RIVER ROUGE RED	
E 2.80	TRACO	NX-280	COLONIAL WHITE	RIVER ROUGE RED	
E 2.90	TRACO	NX-280	COLONIAL WHITE	RIVER ROUGE RED	
E 2.91	TRACO	NX-280	COLONIAL WHITE	RIVER ROUGE RED	
E 3.00	TRACO	NX-280	COLONIAL WHITE	RIVER ROUGE RED	
E 3.10	TRACO	NX-280	COLONIAL WHITE	RIVER ROUGE RED	
E 3.20	TRACO	NX-280	COLONIAL WHITE	RIVER ROUGE RED	
E 3.30	TRACO	NX-280	COLONIAL WHITE	RIVER ROUGE RED	
E 3.40	TRACO	NX-280	COLONIAL WHITE	RIVER ROUGE RED	
E 3.50	TRACO	NX-280	COLONIAL WHITE	RIVER ROUGE RED	
E 4.00	TRACO	NX-280	COLONIAL WHITE	RIVER ROUGE RED	
E 4.10	TRACO	NX-280	COLONIAL WHITE	RIVER ROUGE RED	
E 5.00	TRACO	NX-3800	COLONIAL WHITE	RIVER ROUGE RED	
E 5.10	TRACO	NX-280	COLONIAL WHITE	RIVER ROUGE RED	
N 1.00	TRACO	NX-280	COLONIAL WHITE	RIVER ROUGE RED	
N 1.10	TRACO	NX-280	COLONIAL WHITE	RIVER ROUGE RED	
N 1.20	TRACO	NX-280	COLONIAL WHITE	RIVER ROUGE RED	
N 1.30	TRACO	NX-3800	COLONIAL WHITE	FASHION GREY	
N 1.90	TRACO	NX-3800	COLONIAL WHITE	FASHION GREY	

NOTES:
 1. WINDOWS SHOWN APPROXIMATE DIMENSIONS ONLY FOR PRICING. EACH WINDOW OPENING TO BE FIELD VERIFIED.
 2. TYPICAL REPLACEMENT UNITS SHALL BE THERMALLY BROKEN ALUMINUM WINDOWS WITH CLEAR LOW E INSULATING GLASS.
 3. REPLACEMENT WINDOWS SHALL MATCH EXISTING CONFIGURATIONS AS CLOSELY AS POSSIBLE - SEE EXISTING AND PROPOSED DETAILS
 4. ALL WINDOWS TO BE WEATHER TIGHT AT THE COMPLETION OF EACH INSTALLATION
 5. GLAZING & EXPOSED FINISHES TO TO FREE OF LABELS, GLUE AND PACKING MATERIALS AT THE COMPLETION OF INSTALLATION - INTERIOR & EXTERIOR FACES
 6. WINDOWS IN RM 1101 COMMERCIAL 1102 COMMERCIAL 1113 ENTRANCE 1115 ENTRANCE 1116 CORRIDOR PER DETAIL 7/A206
 7. WINDOWS IN FUTURE TENANT SPACE PER DETAILS 2 S, J, M & H / A206
 8. ALL OTHER WINDOWS TO RECEIVE DRYWALL RETURNS & GRANITE SILLS PER DETAIL 8/A206.



C.1 EXTERIOR BUILDING ELEVATION
SCALE: 1/8" = 1' - 0"

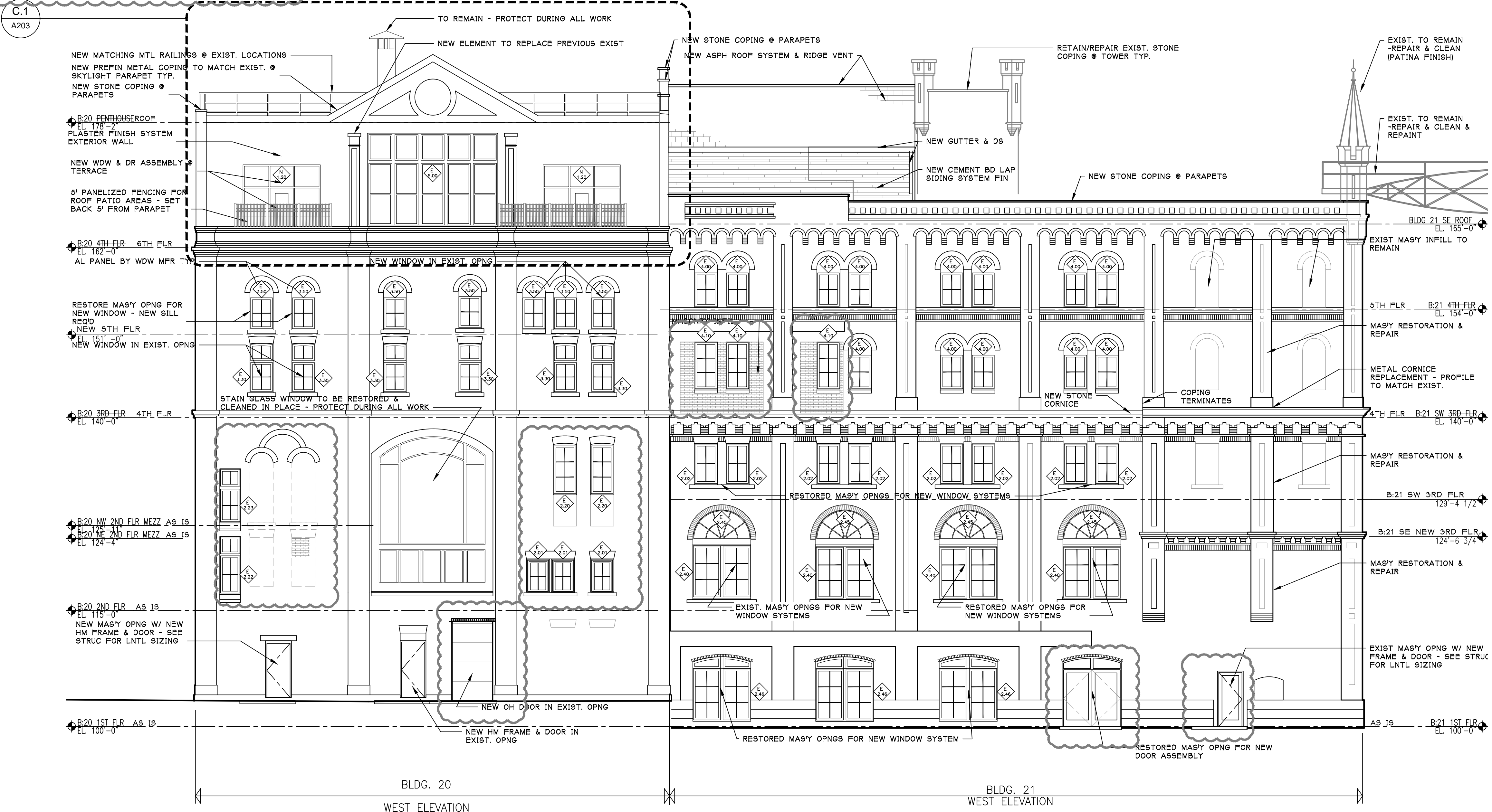
1 WINDOW SCHEDULE

SCALE: N/A

- WINDOWS SHOWN APPROXIMATE DIMENSIONS ONLY FOR PRICING. EACH WINDOW OPENING TO BE FIELD VERIFIED.
- TYPICAL REPLACEMENT UNITS SHALL BE THERMALLY BROKEN ALUMINUM WINDOWS WITH CLEAR LOW E INSULATING GLASS W/ MINIMUM LIGHT TRANSMITTANCE OF 72%.
- REPLACEMENT WINDOWS SHALL MATCH EXISTING CONFIGURATIONS AS CLOSELY AS POSSIBLE - SEE EXISTING AND PROPOSED DETAILS
- ALL WINDOWS TO BE WEATHER TIGHT AT THE COMPLETION OF EACH INSTALLATION
- GLAZING & EXPOSED FINISHES TO TO FREE OF LABELS, GLUE AND PACKING MATERIALS AT THE COMPLETION OF INSTALLATION - INTERIOR & EXTERIOR FACES

2 WINDOW REPLACEMENT NOTES

SCALE: N/A



C WEST EXTERIOR BUILDING ELEVATION
SCALE: 1/8" = 1' - 0"

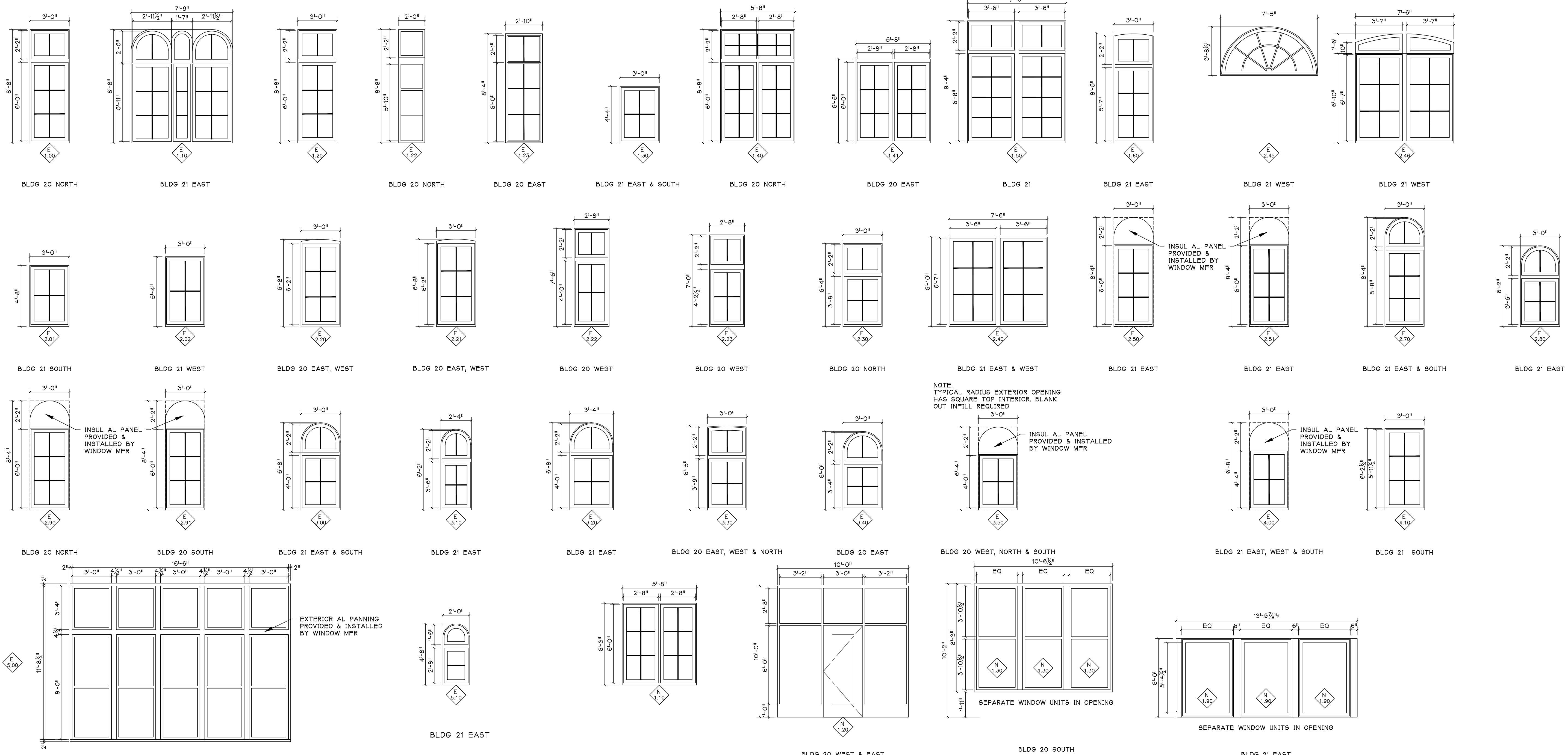
The Brewhouse
ALL SUITES HOTEL
1203 NORTH 10TH STREET
MILWAUKEE, WISCONSIN

Project No. 1001-00-1008
Plot Date: 4/3/2012 4:13 PM
Drawn by: crd

Issue dates:
2010.11.12 PRELIMINARY BIDDING
2011.07.28 BID PACKAGE #1
2011.09.19 BID PACKAGE #2
2012.04.02 HPC SUBMITTAL

Sheet Title
BUILDING EXTERIOR ELEVATION

Sheet No.
A203



NOTE:
TYPICAL RADIUS EXTERIOR OPENING
HAS SQUARE TOP INTERIOR. BLANK
OUT INFILL REQUIRED

INSUL AL PANEL
PROVIDED &
INSTALLED BY
WINDOW MFR

INSUL AL PANEL
PROVIDED &
INSTALLED BY
WINDOW MFR

EXTERIOR AL PANNING
PROVIDED & INSTALLED
BY WINDOW MFR

3 EXTERIOR WINDOW ELEVATIONS

SCALE: 1/4" = 1' - 0"

The Brewhouse
ALL SUITES HOTEL
1203 NORTH 10TH STREET
MILWAUKEE, WISCONSIN

Project No. 1001-00-1008
Plot Date: 4/3/2012 4:09 PM
Drawn by: crd

Issue dates:
2010.11.12 PRELIMINARY BIDDING
2011.07.28 BID PACKAGE #1
2011.09.19 BID PACKAGE #2
2012.04.02 HPC SUBMITTAL

E = EXISTING WINDOW TO BE REPLACED

N = NEW WINDOW IN NEW OPENING

2 WINDOW KEY
N.A.

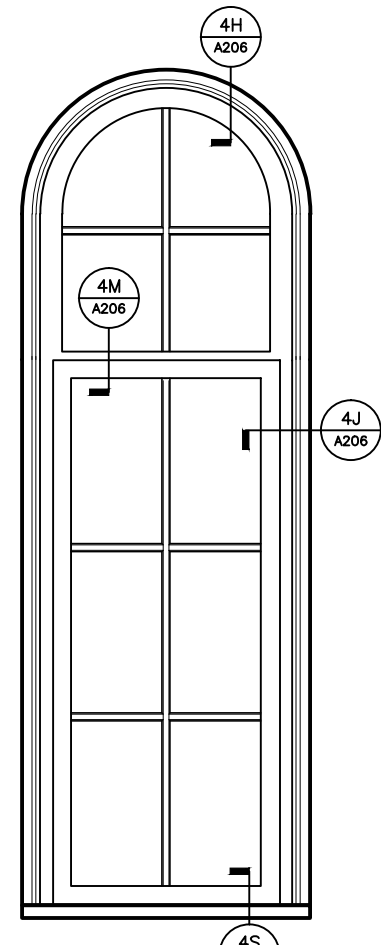
EXISTING WINDOW NOTES:

- WINDOWS SHOWN APPROXIMATE DIMENSIONS ONLY FOR PRICING. EACH WINDOW OPENING TO BE FIELD VERIFIED.
- TYPICAL REPLACEMENT UNITS SHALL BE THERMALLY BROKEN ALUMINUM WINDOWS WITH CLEAR LOW E INSULATING GLASS.
- REPLACEMENT WINDOWS SHALL MATCH EXISTING CONFIGURATIONS AS CLOSELY AS POSSIBLE - SEE EXISTING AND PROPOSED DETAILS ON FOLLOWING SHEETS

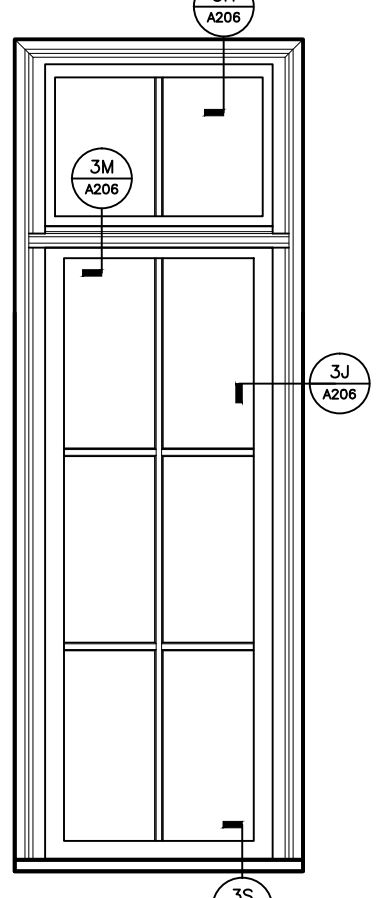
1 EXISTING WINDOW NOTES
N.A.

Sheet Title
EXTERIOR WINDOW ELEVATIONS

Sheet No.
A205



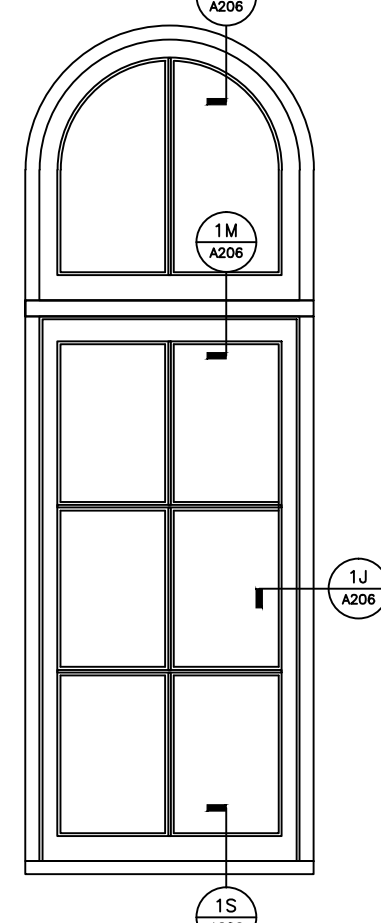
8 REPLACEMENT WINDOW ELEV
SCALE: 1/2" = 1' - 0"



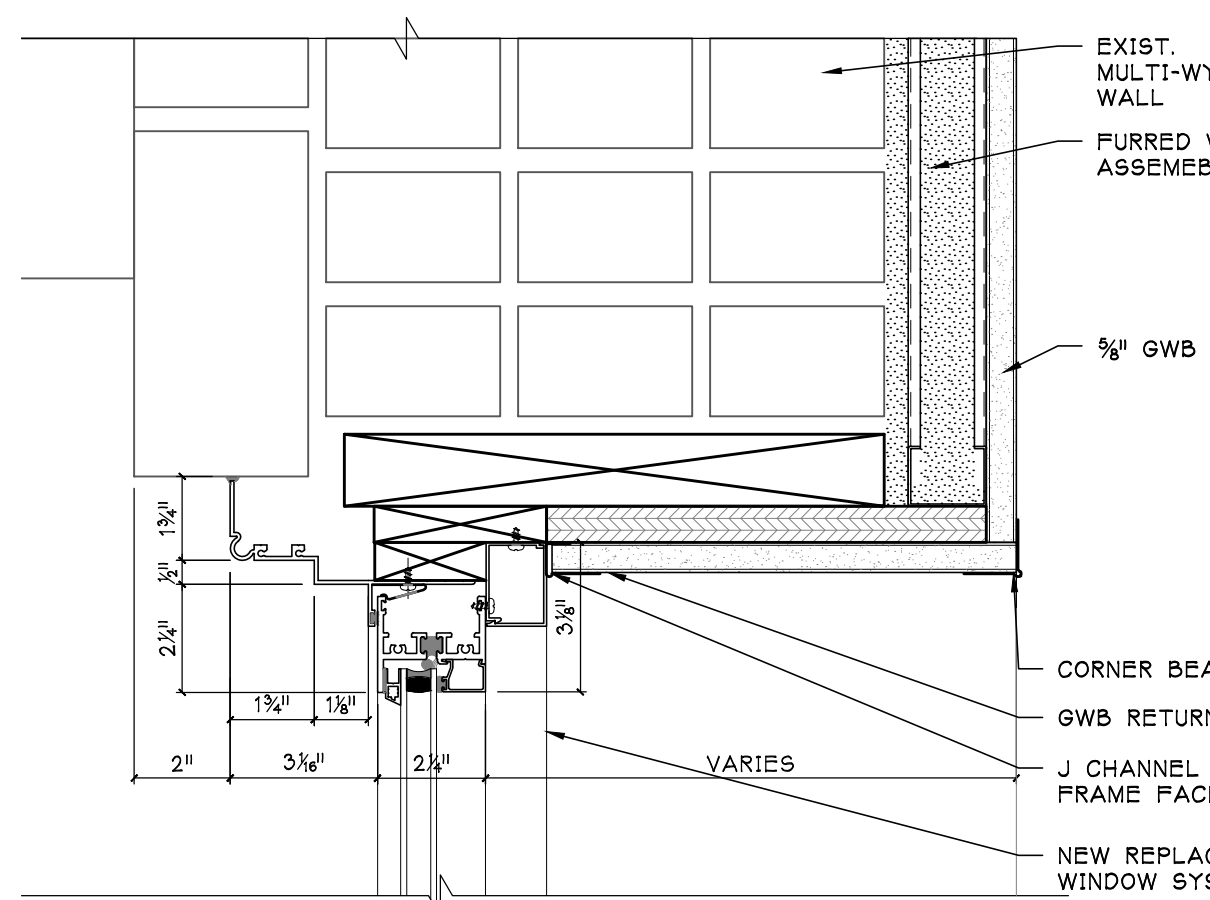
7 INTERIOR CASED REPLACEMENT WINDOW ELEV
SCALE: 1/2" = 1' - 0"

- WINDOWS SHOWN APPROXIMATE DIMENSIONS ONLY FOR PRICING. EACH WINDOW OPENING TO BE FIELD VERIFIED.
- TYPICAL REPLACEMENT UNITS SHALL BE THERMALLY BROKEN ALUMINUM WINDOWS WITH CLEAR LOW E INSULATING GLASS W/ MINIMUM LIGHT TRANSMITTANCE OF 72%.
- REPLACEMENT WINDOWS SHALL MATCH EXISTING CONFIGURATIONS AS CLOSELY AS POSSIBLE - SEE EXISTING AND PROPOSED DETAILS.
- ALL WINDOWS TO BE WEATHER TIGHT AT THE COMPLETION OF EACH INSTALLATION.
- GLAZING & EXPOSED FINISHES TO TO FREE OF LABELS, GLUE AND PACKING MATERIALS AT THE COMPLETION OF INSTALLATION - INTERIOR & EXTERIOR FACES.

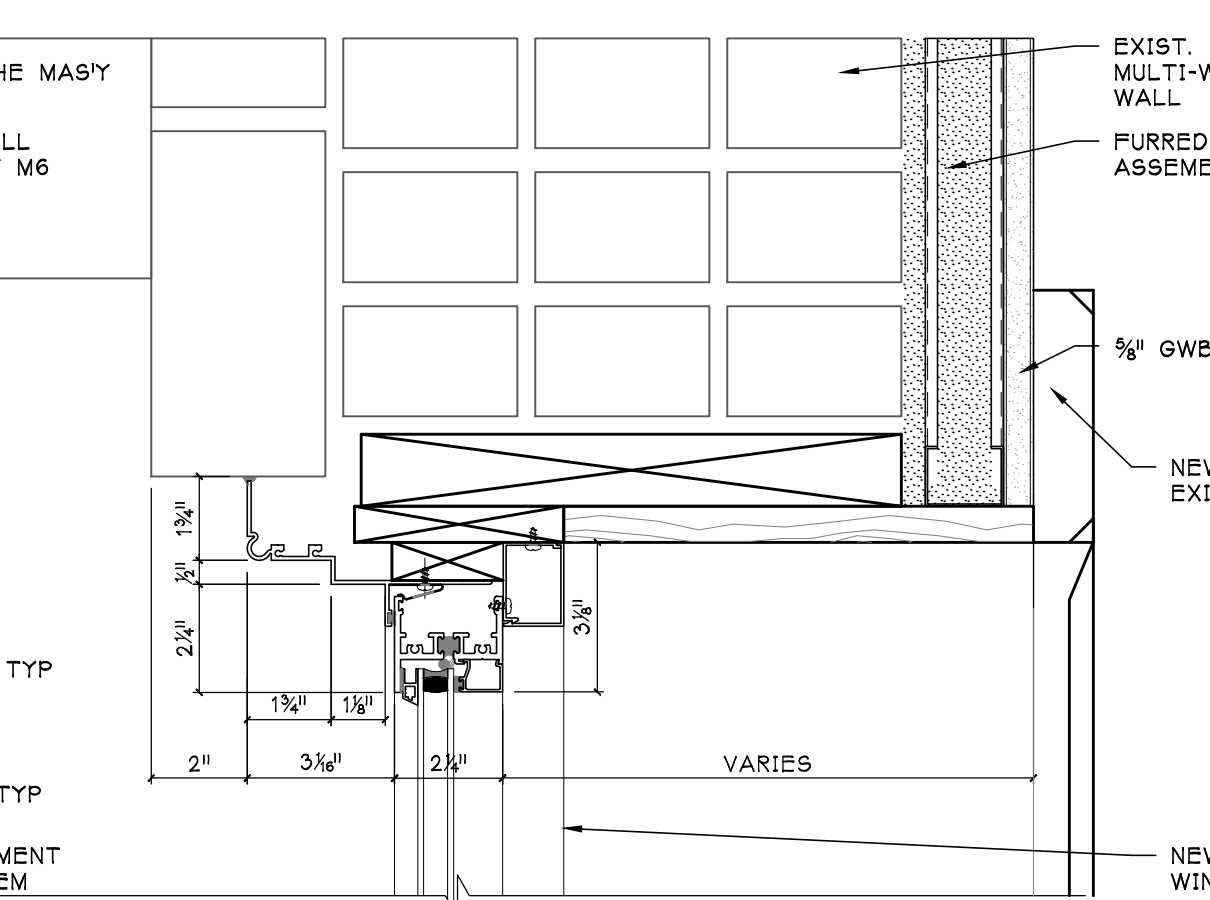
6 REPLACEMENT WINDOW NOTES
N.A.
SHOWN FOR REFERENCE ONLY



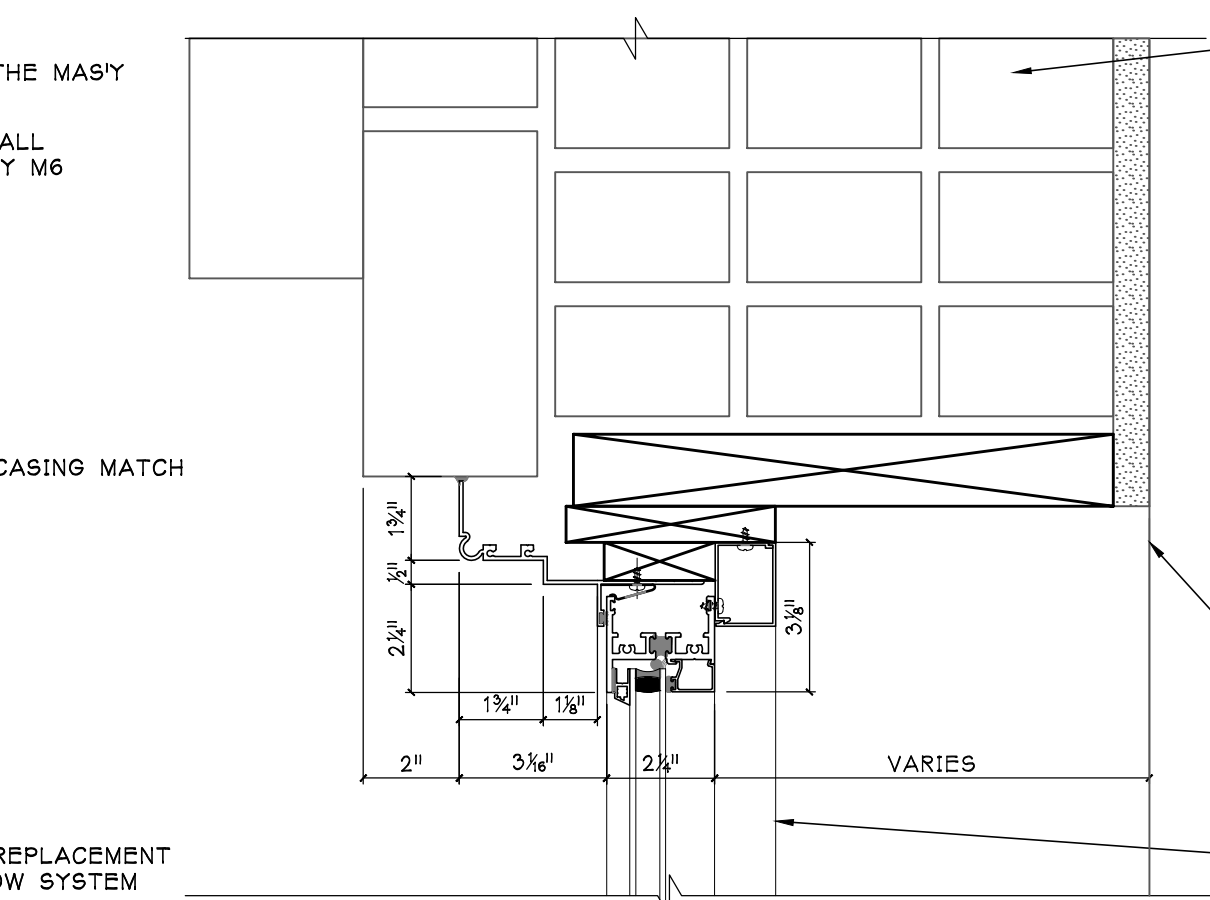
4 EXISTING WINDOW ELEV
SCALE: 1/2" = 1' - 0"



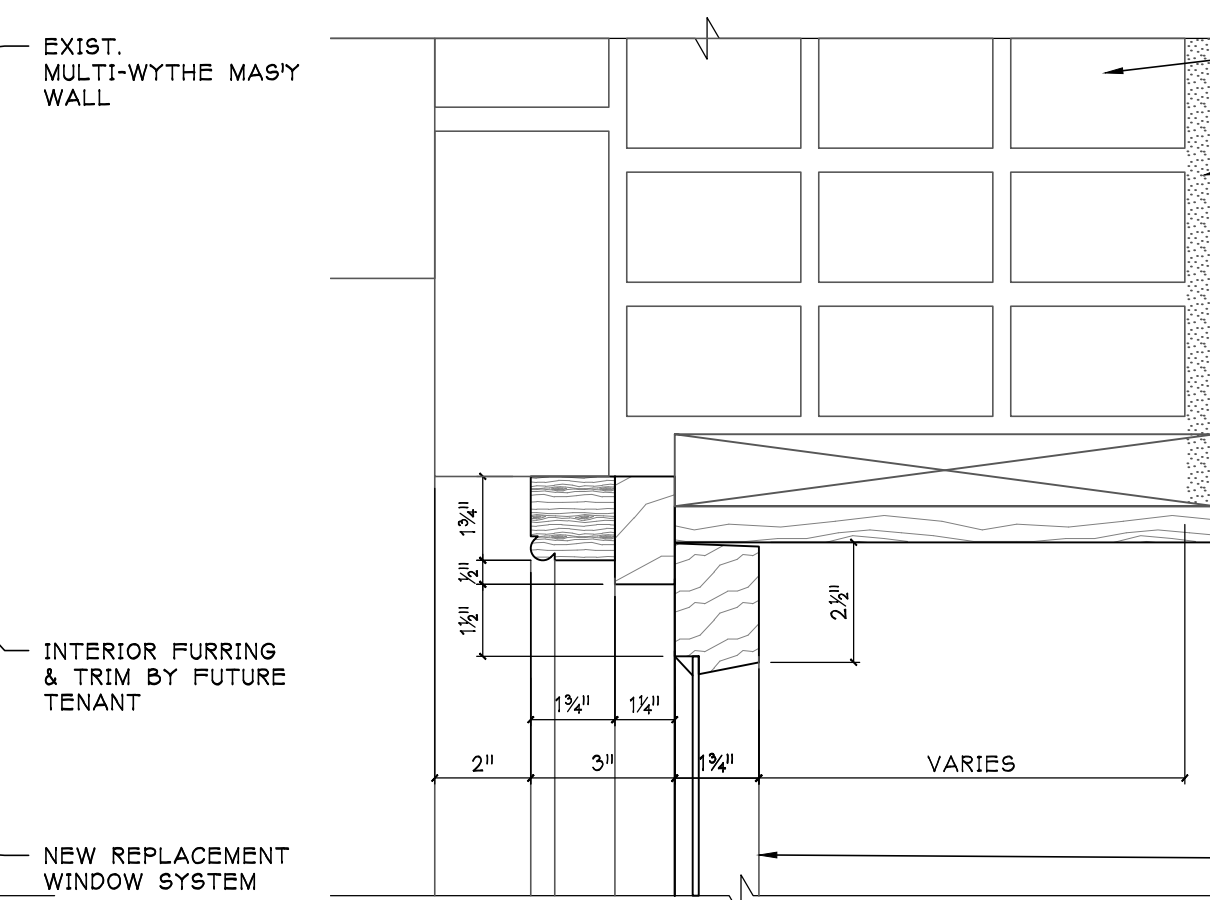
4H FIXED WINDOW @ HEAD
FURRED WALL NO CASING
SCALE: 3/8" = 1' - 0"



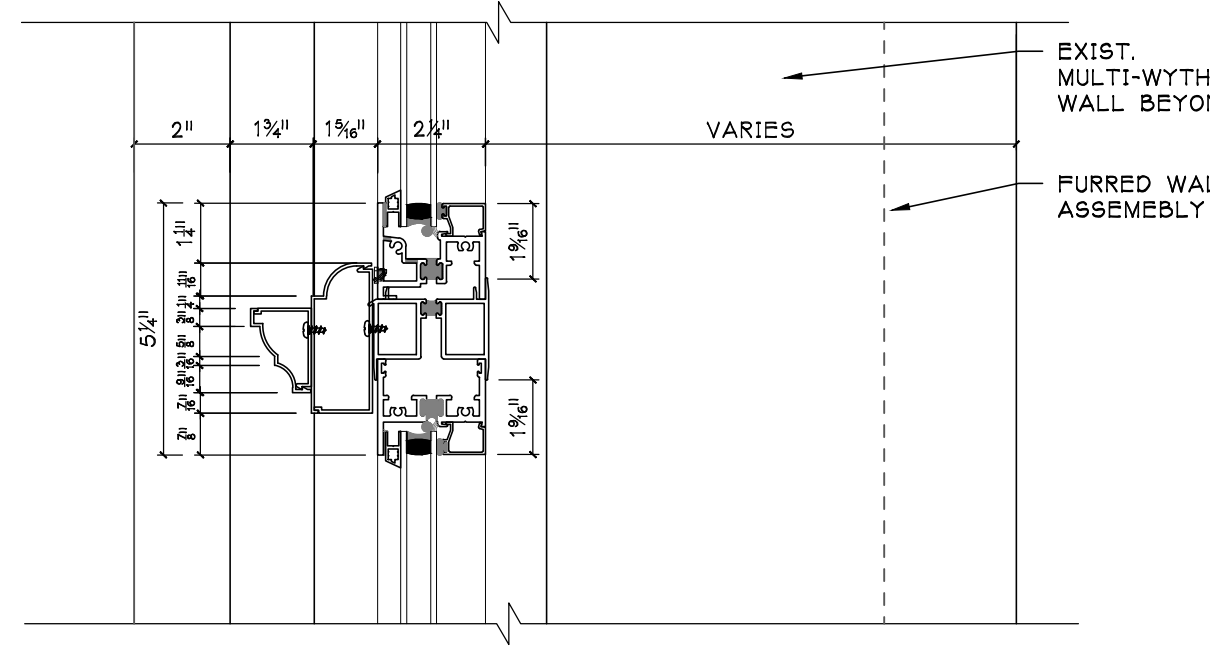
3H FIXED WINDOW @ HEAD
FURRED WALL & CASING
SCALE: 3/8" = 1' - 0"



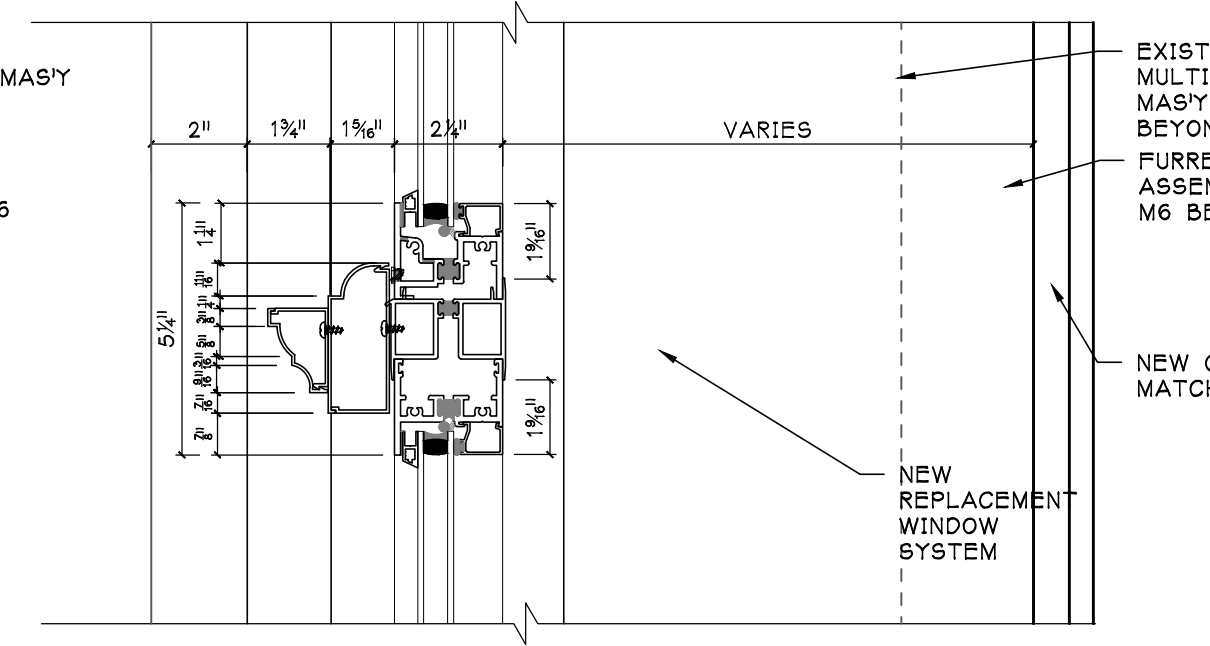
2H FIXED WINDOW @ HEAD
ORIGINAL WALL & CASING
SCALE: 3/8" = 1' - 0"



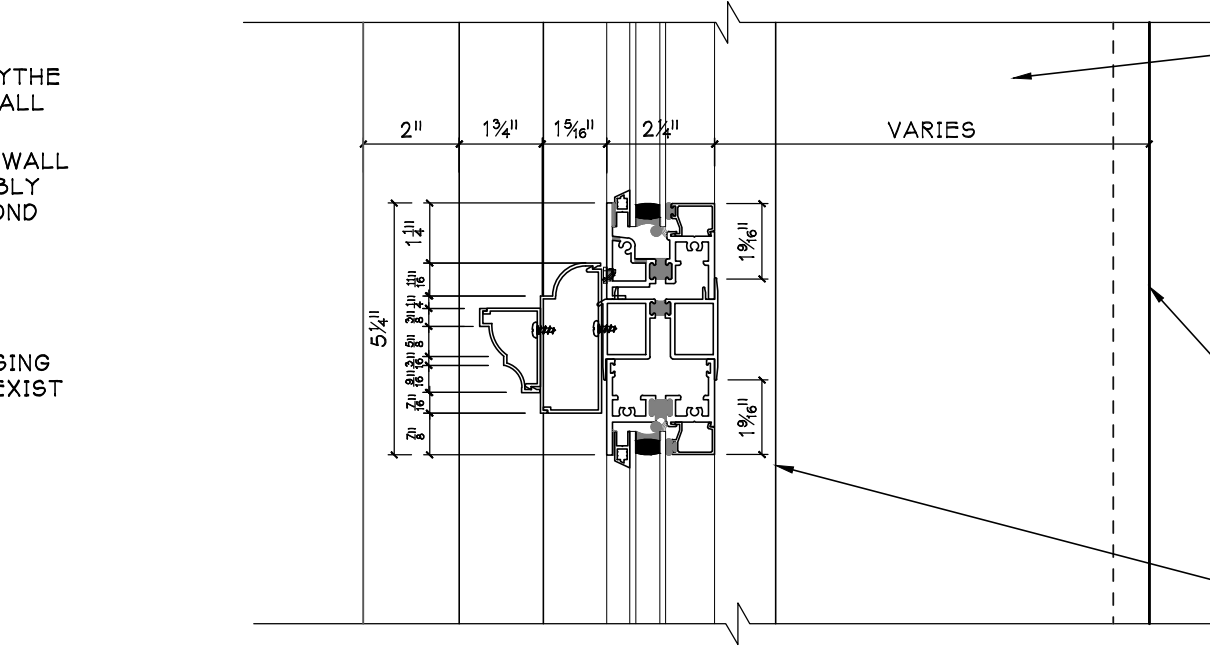
1H EXIST. WINDOW HEAD
SHOWN FOR REFERENCE ONLY
SCALE: 3/8" = 1' - 0"



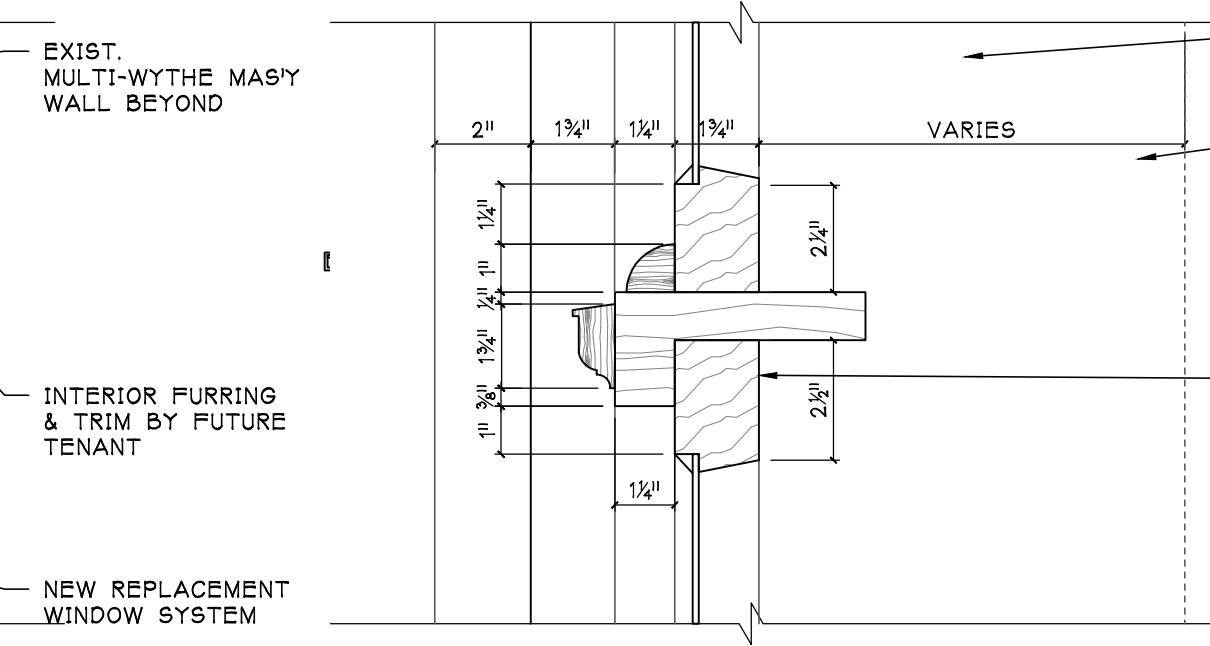
4M FIXED WINDOW @ MEETING RAIL
FURRED WALL NO CASING
SCALE: 3/8" = 1' - 0"



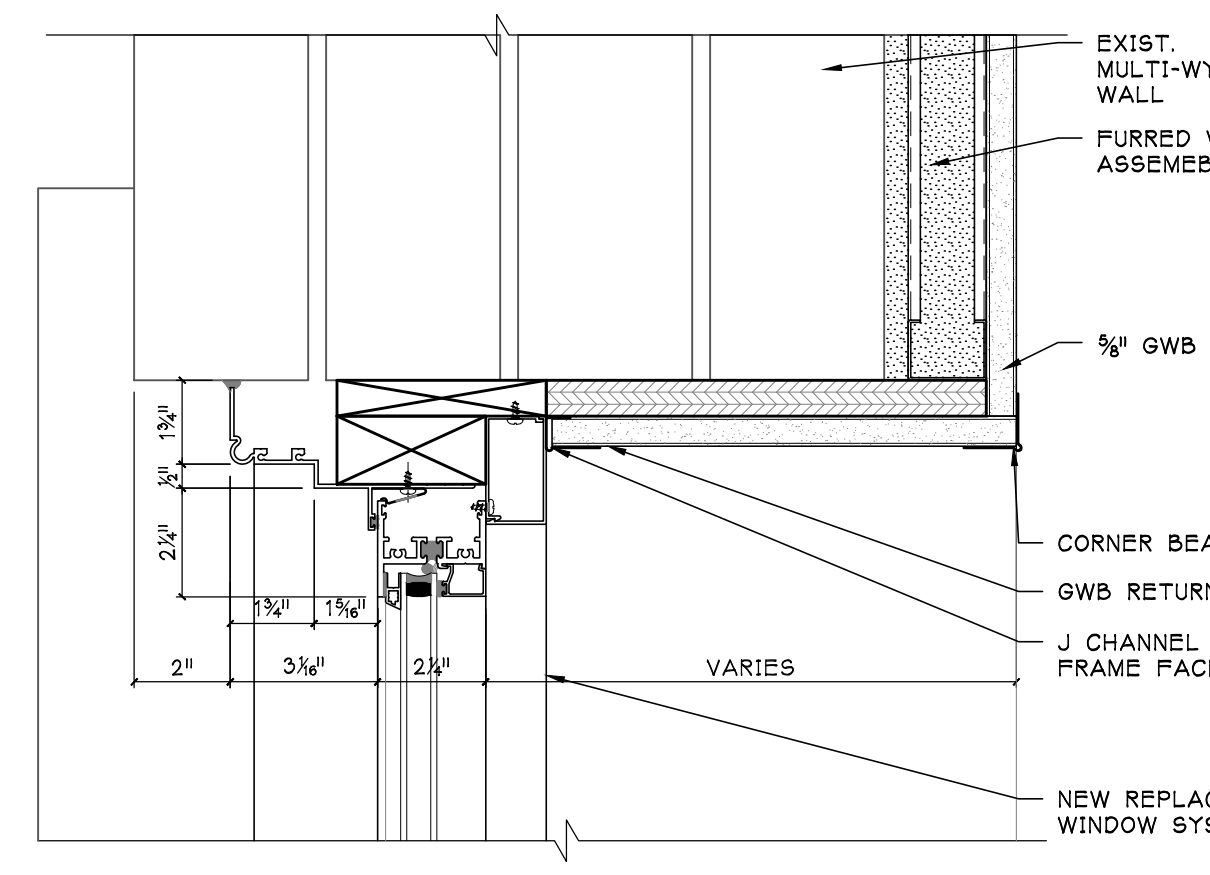
3M FIXED WINDOW @ MEETING RAIL
FURRED WALL & CASING
SCALE: 3/8" = 1' - 0"



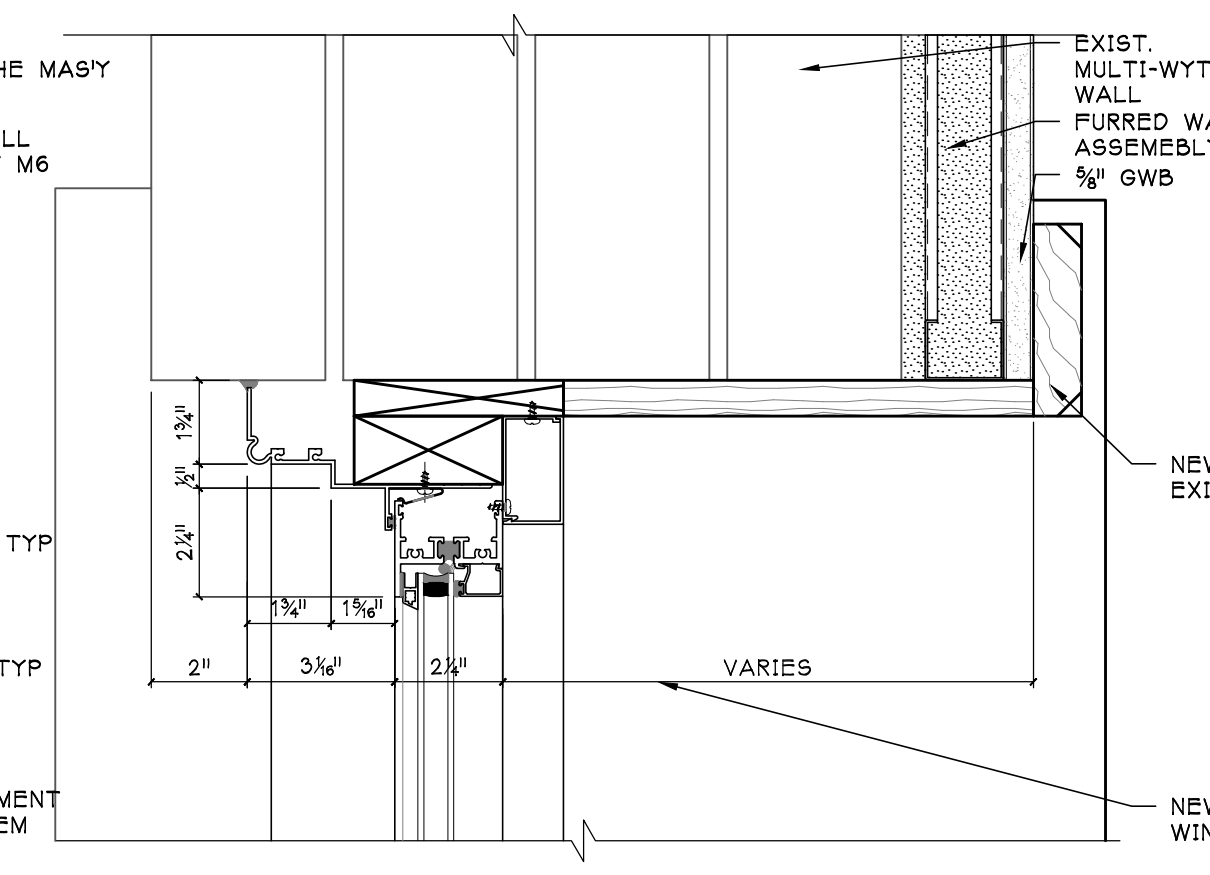
2M FIXED WINDOW @ MEETING RAIL
ORIGINAL WALL & CASING
SCALE: 3/8" = 1' - 0"



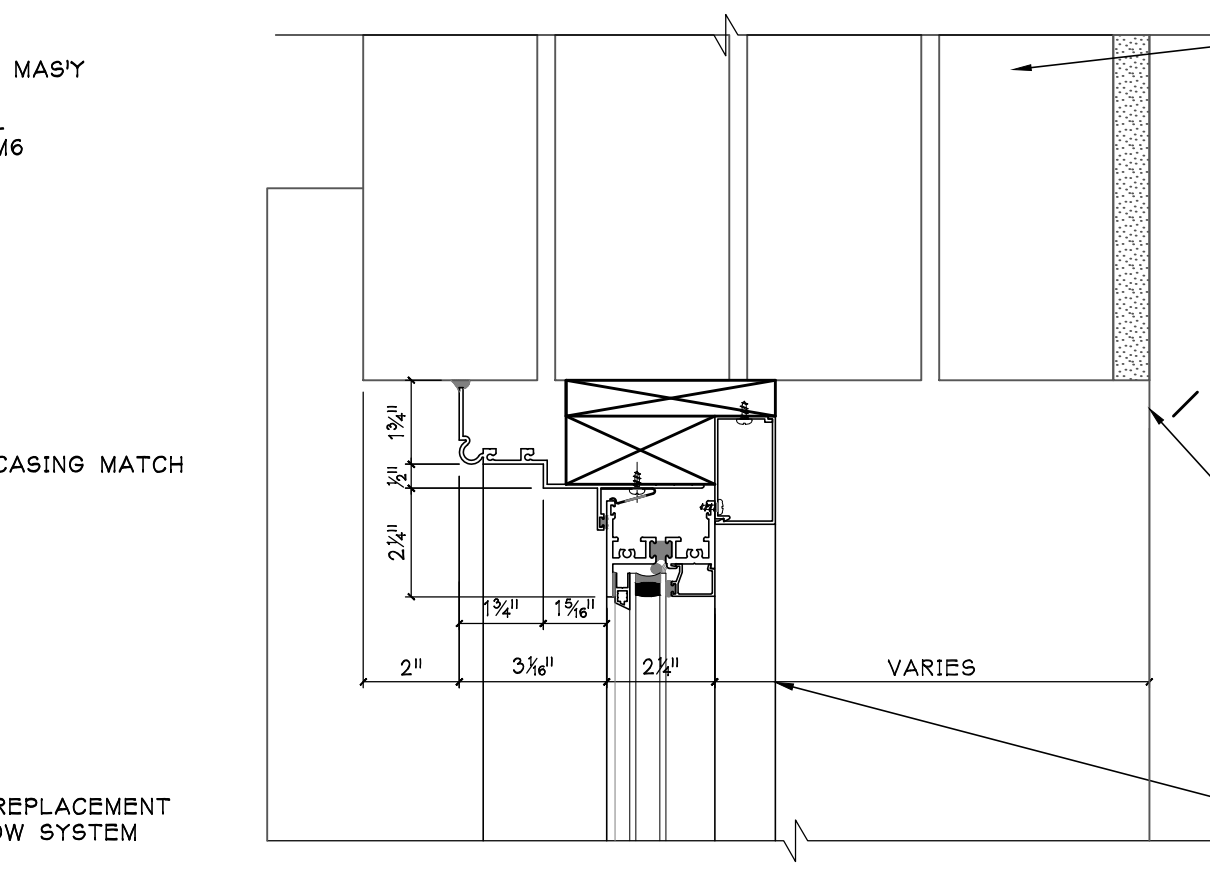
1M EXIST. MEETING RAIL
SHOWN FOR REFERENCE ONLY
SCALE: 3/8" = 1' - 0"



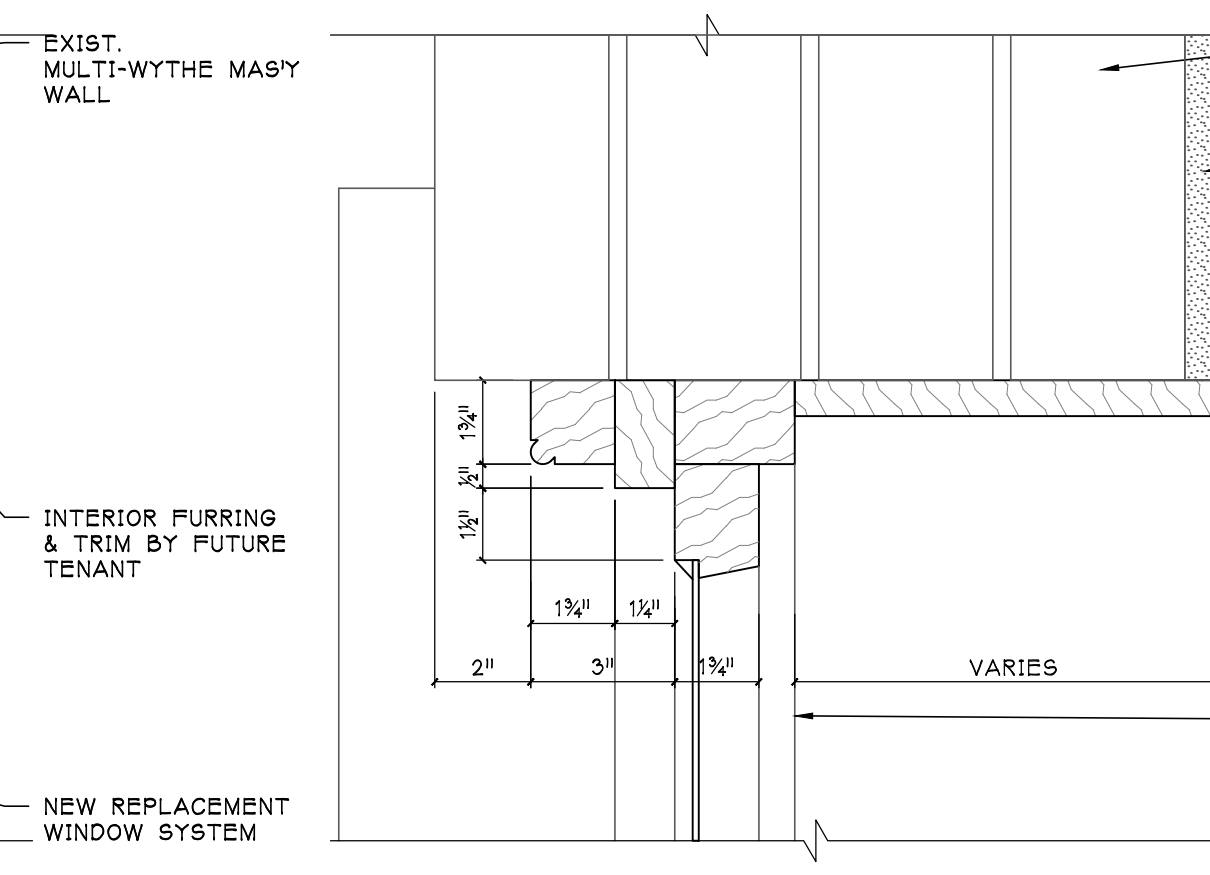
4J FIXED WINDOW @ JAMB
FURRED WALL NO CASING
SCALE: 3/8" = 1' - 0"



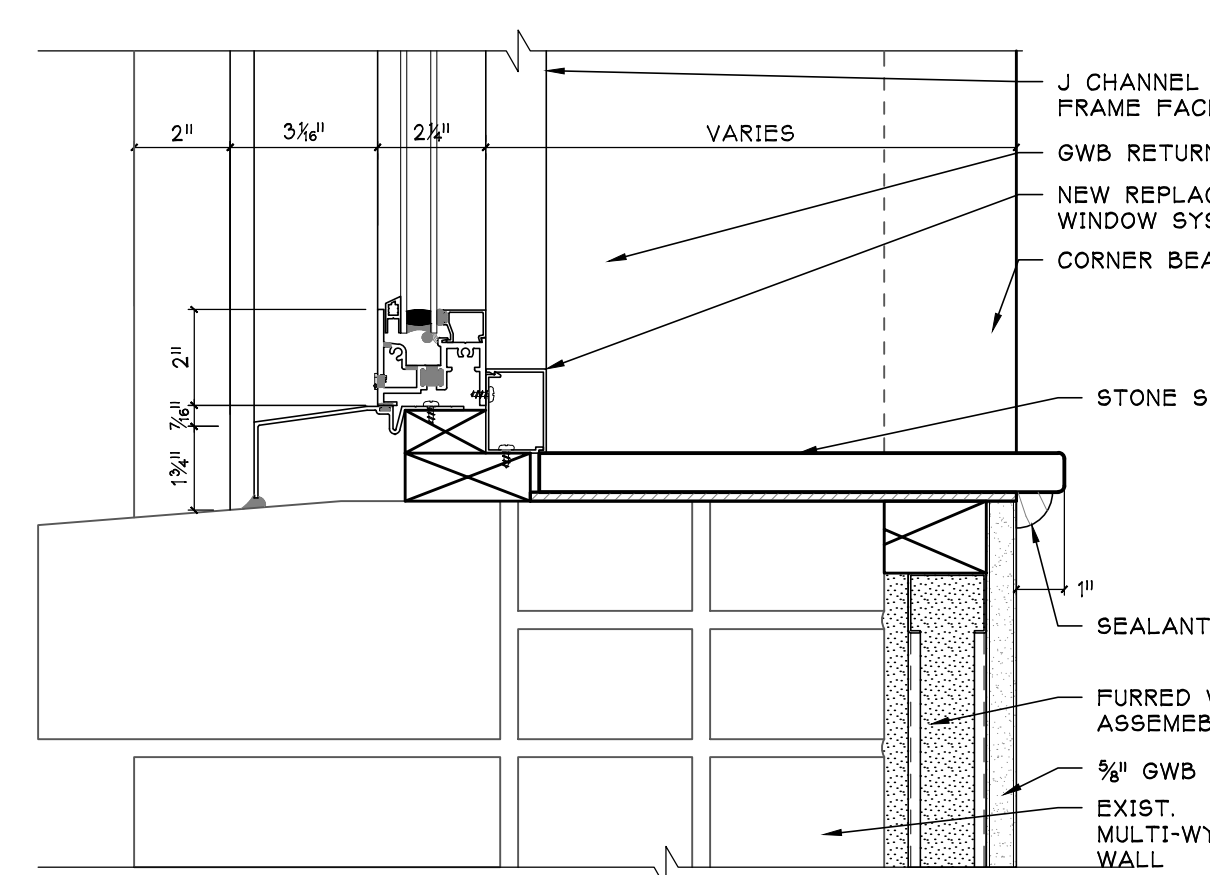
3J FIXED WINDOW @ JAMB
FURRED WALL & CASING
SCALE: 3/8" = 1' - 0"



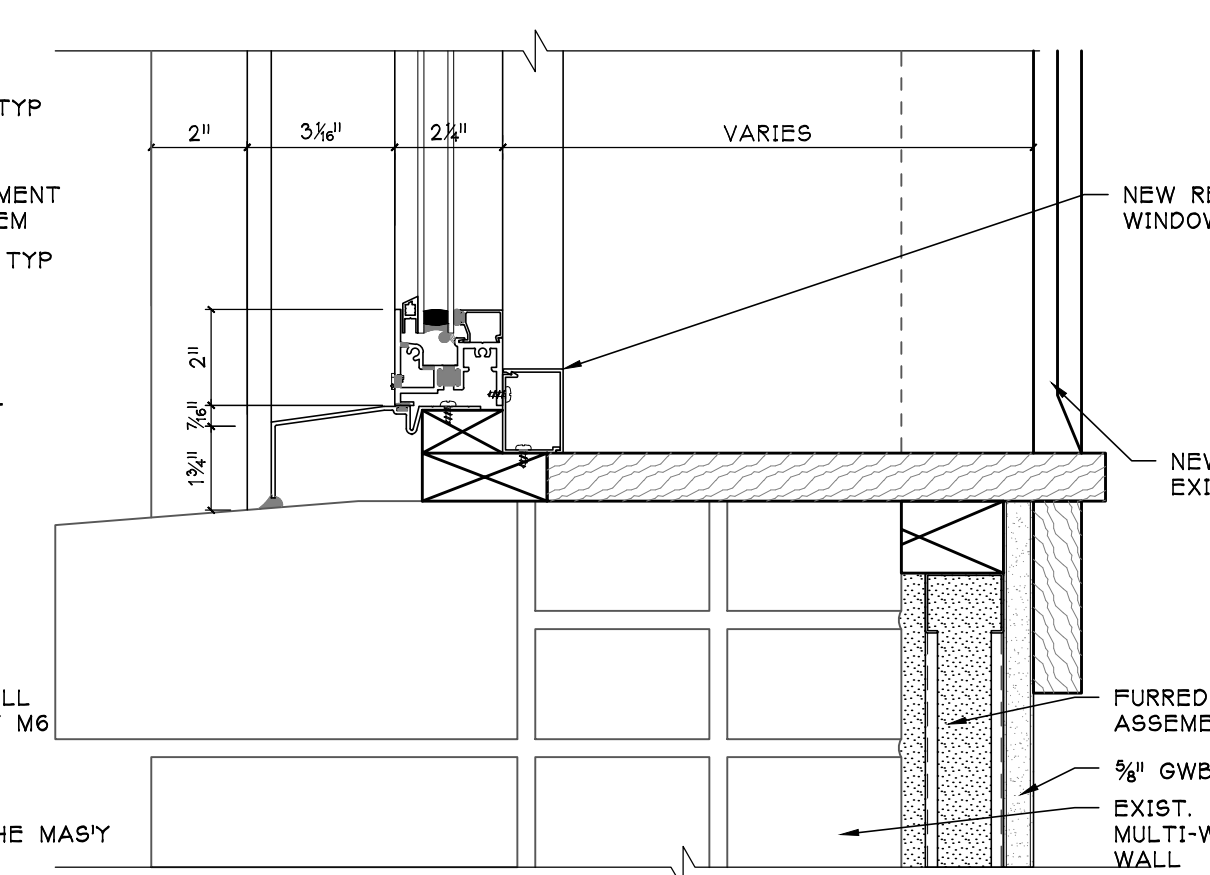
2J FIXED WINDOW @ JAMB
ORIGINAL WALL & CASING
SCALE: 3/8" = 1' - 0"



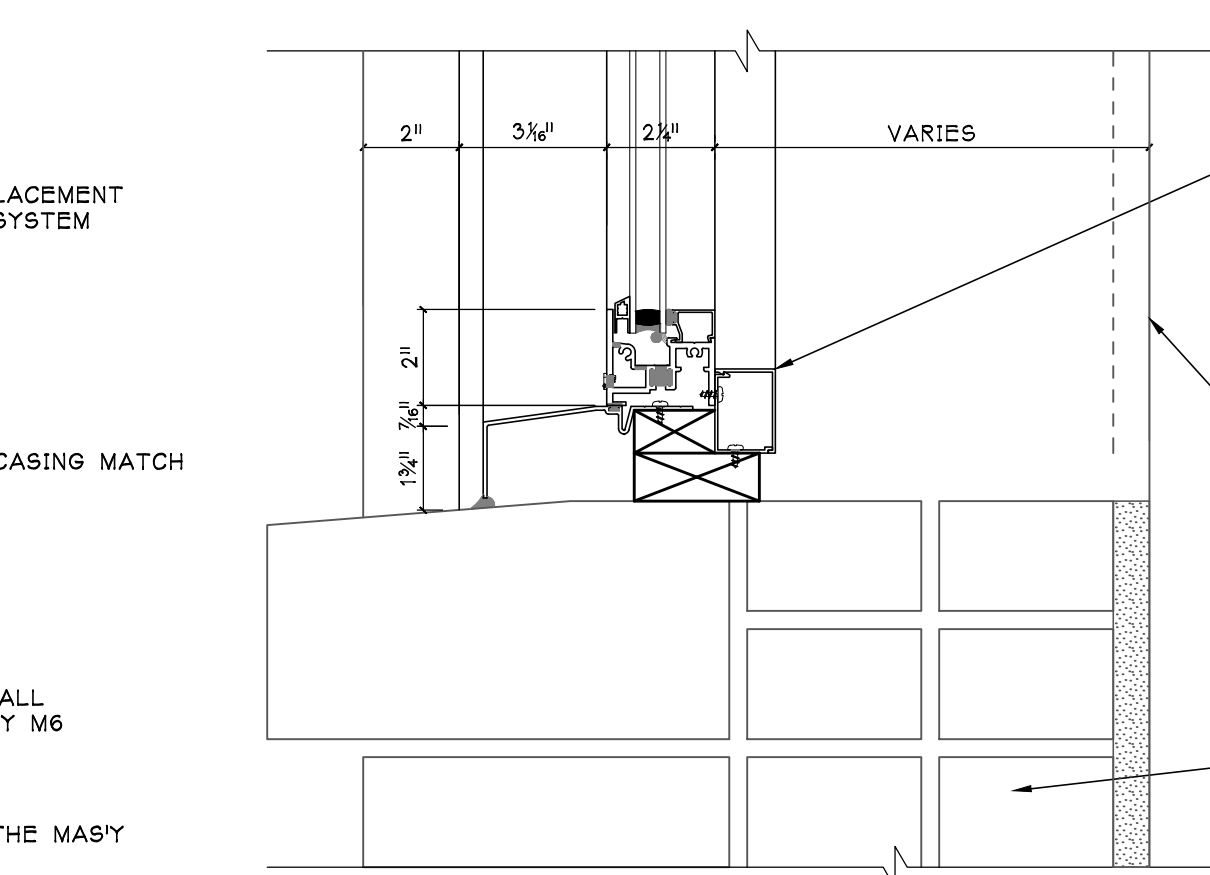
1J EXIST. WINDOW JAMB
SHOWN FOR REFERENCE ONLY
SCALE: 3/8" = 1' - 0"



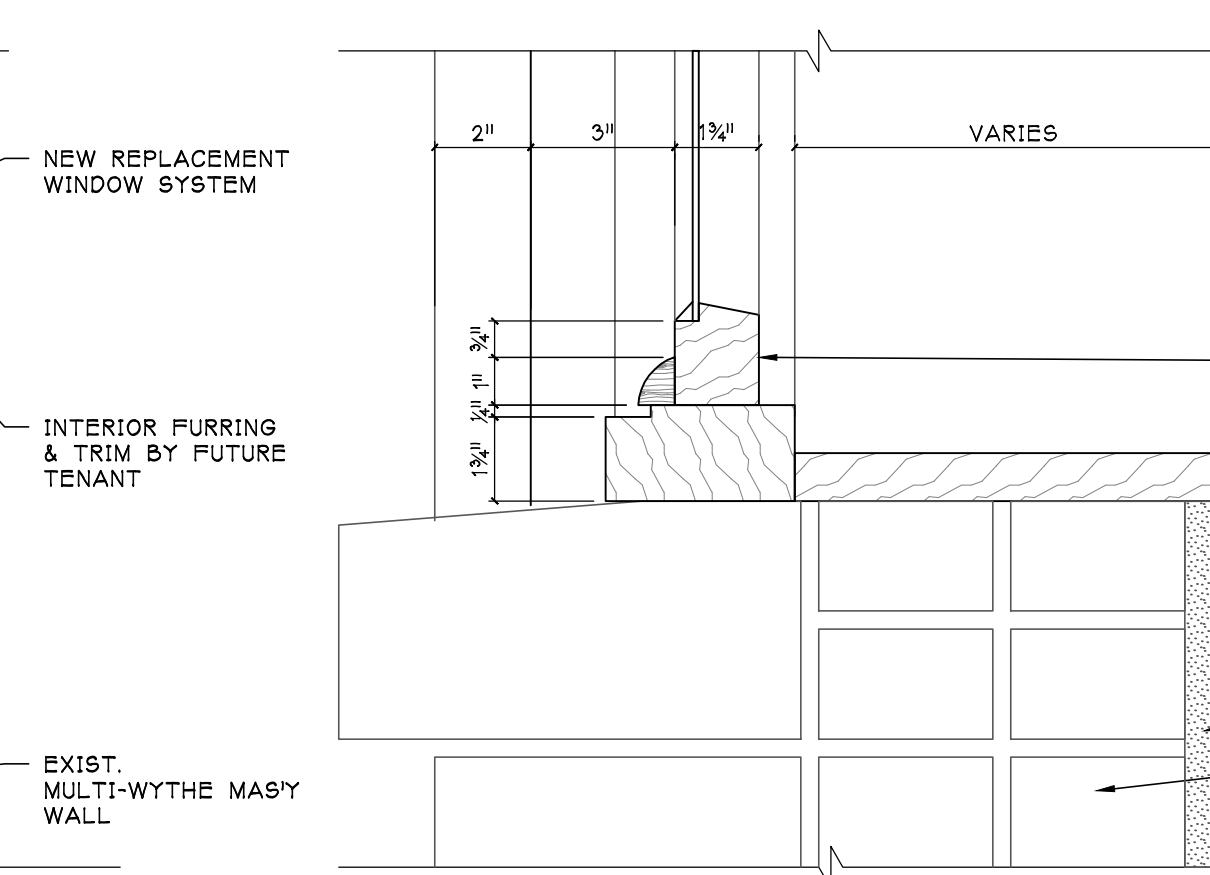
4S FIXED WINDOW @ SILL
FURRED WALL NO CASING
SCALE: 3/8" = 1' - 0"



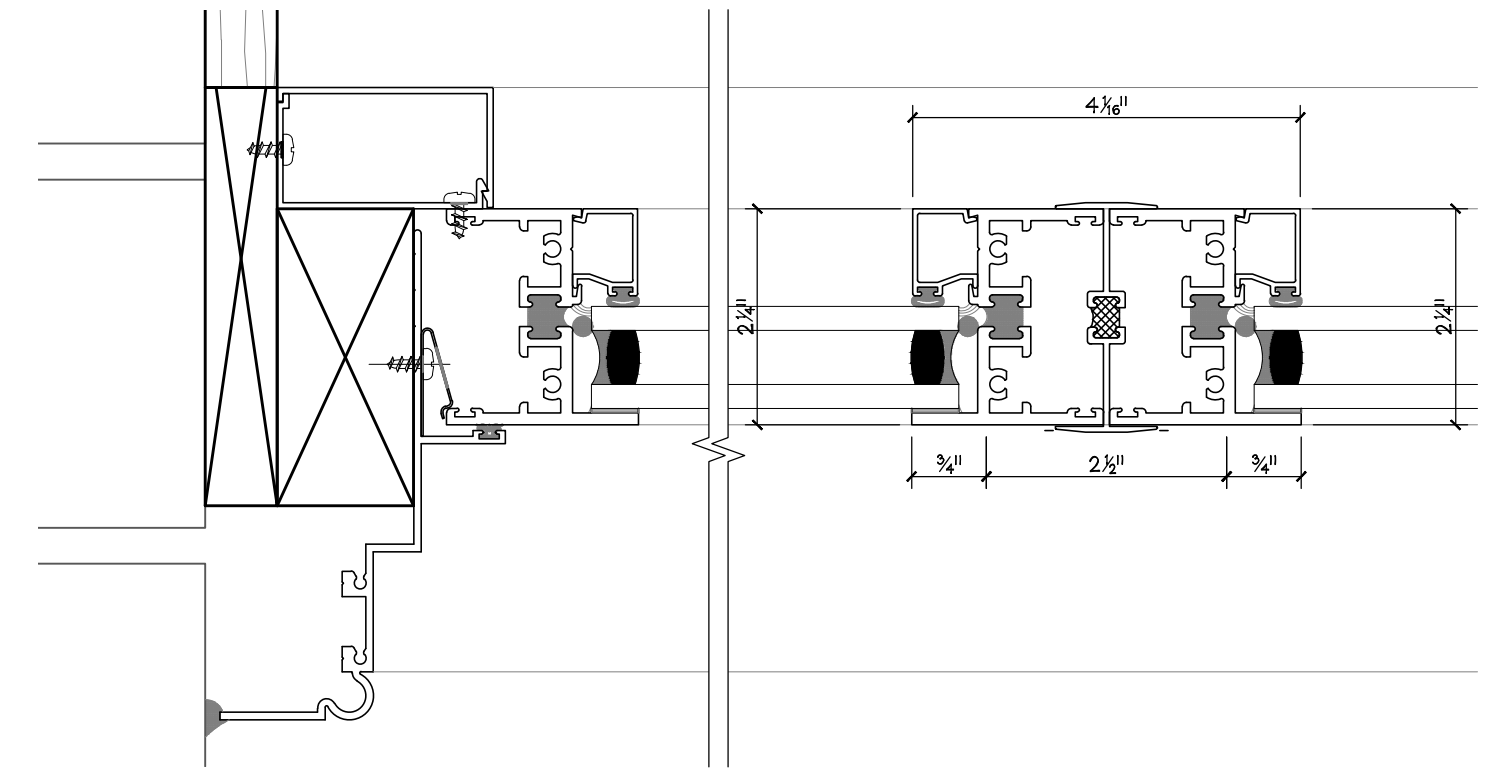
3S FIXED WINDOW @ SILL
FURRED WALL & CASING
SCALE: 3/8" = 1' - 0"



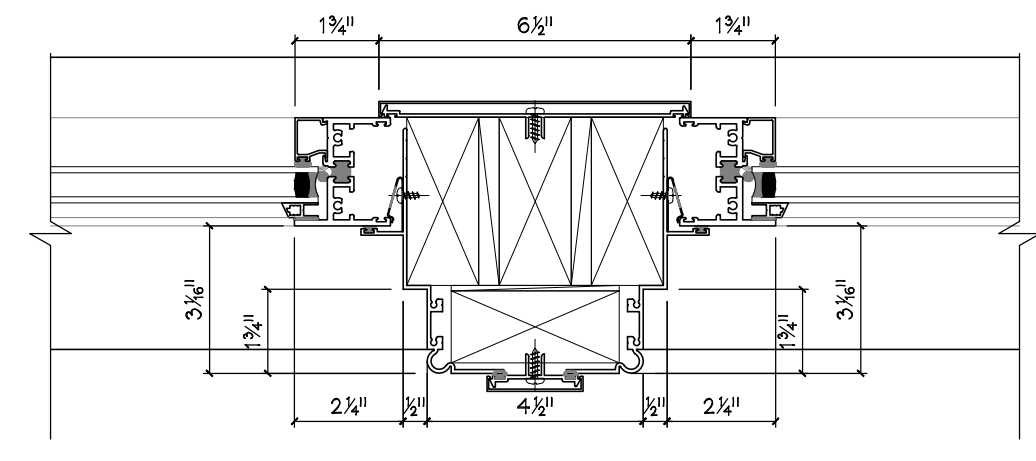
2S FIXED WINDOW @ SILL
ORIGINAL WALL & CASING
SCALE: 3/8" = 1' - 0"



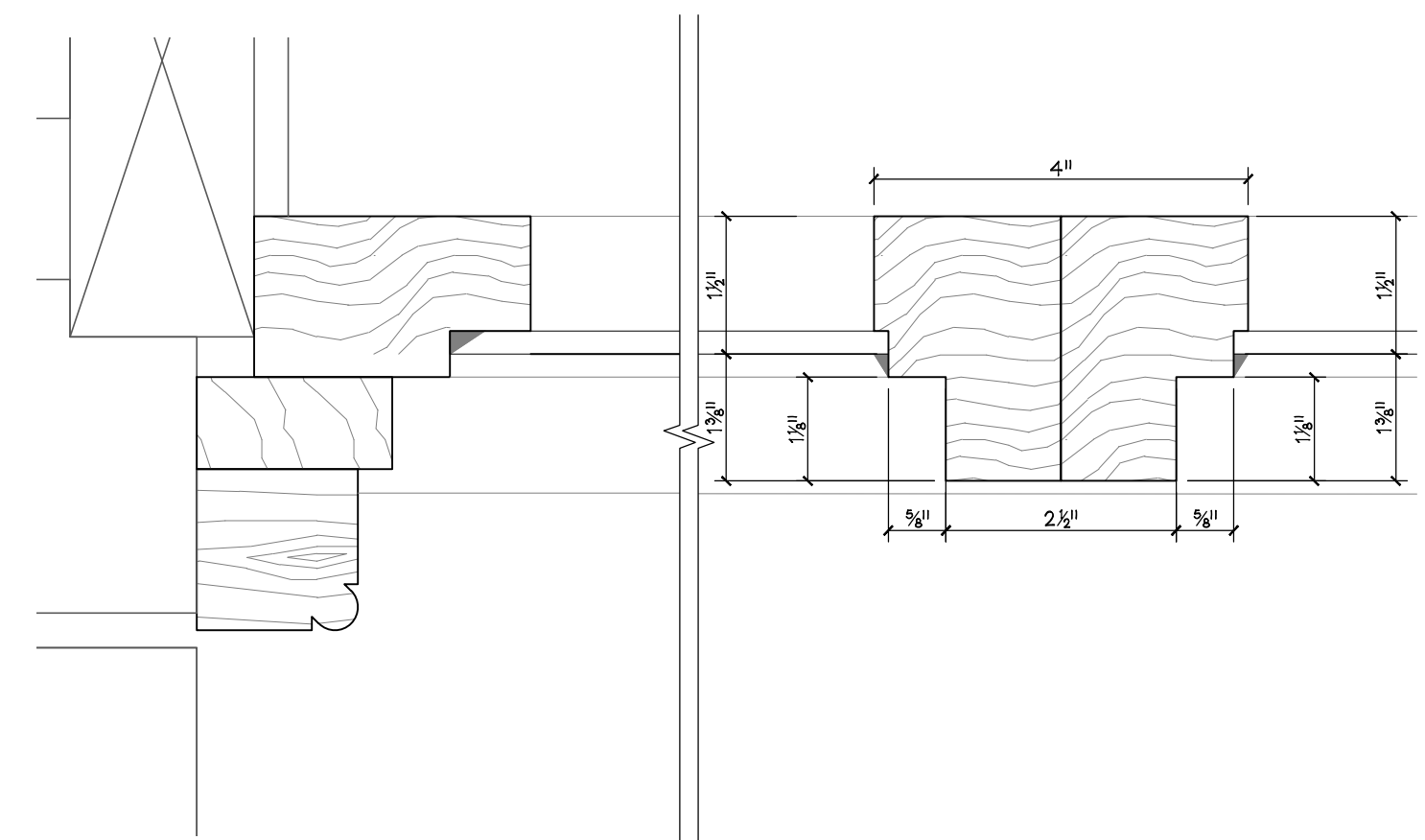
1S EXIST. WINDOW SILL
SHOWN FOR REFERENCE ONLY
SCALE: 3/8" = 1' - 0"



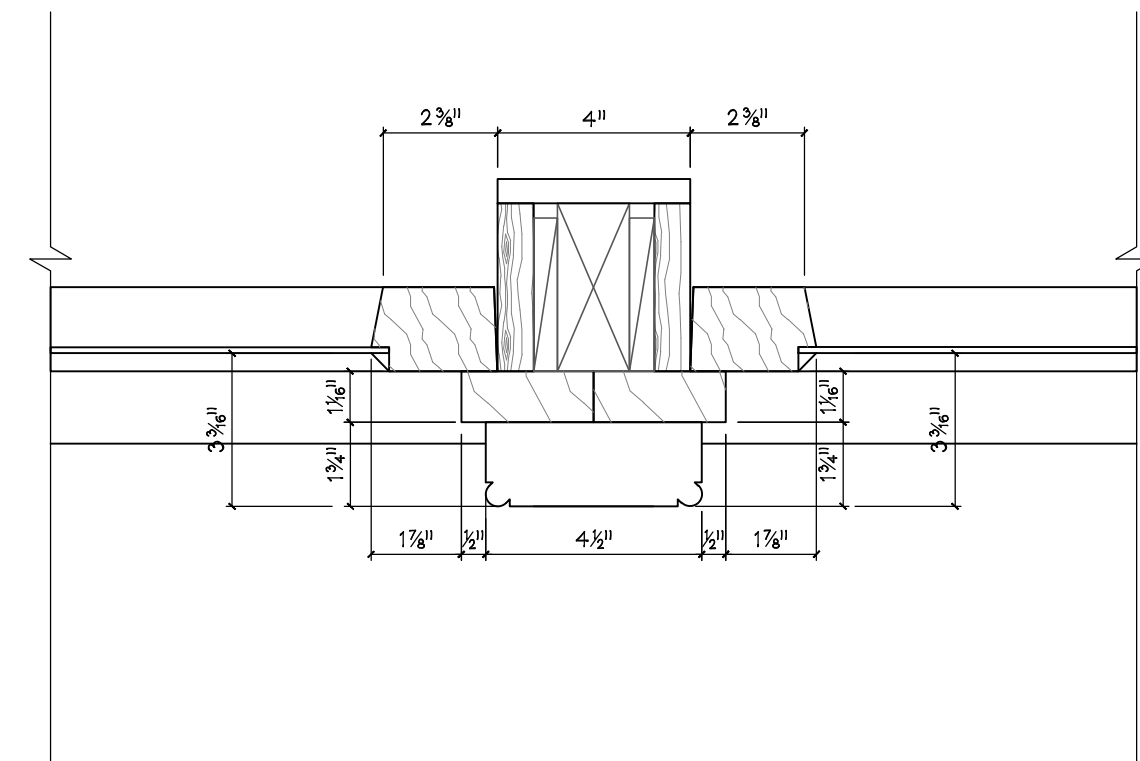
9 PROPOSED VERTICAL MULLION WINDOW E1.10
SCALE: 6" = 1' - 0"



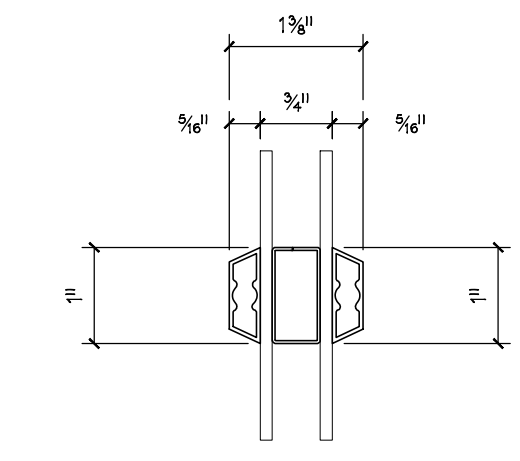
7 PROPOSED VERTICAL MULLION WINDOW E2.40
SCALE: 1/2" = 1' - 0"



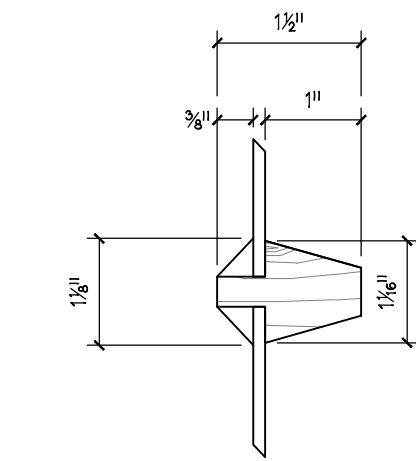
8 EXISTING VERTICAL MULLION WINDOW E1.10
SCALE: 6" = 1' - 0"



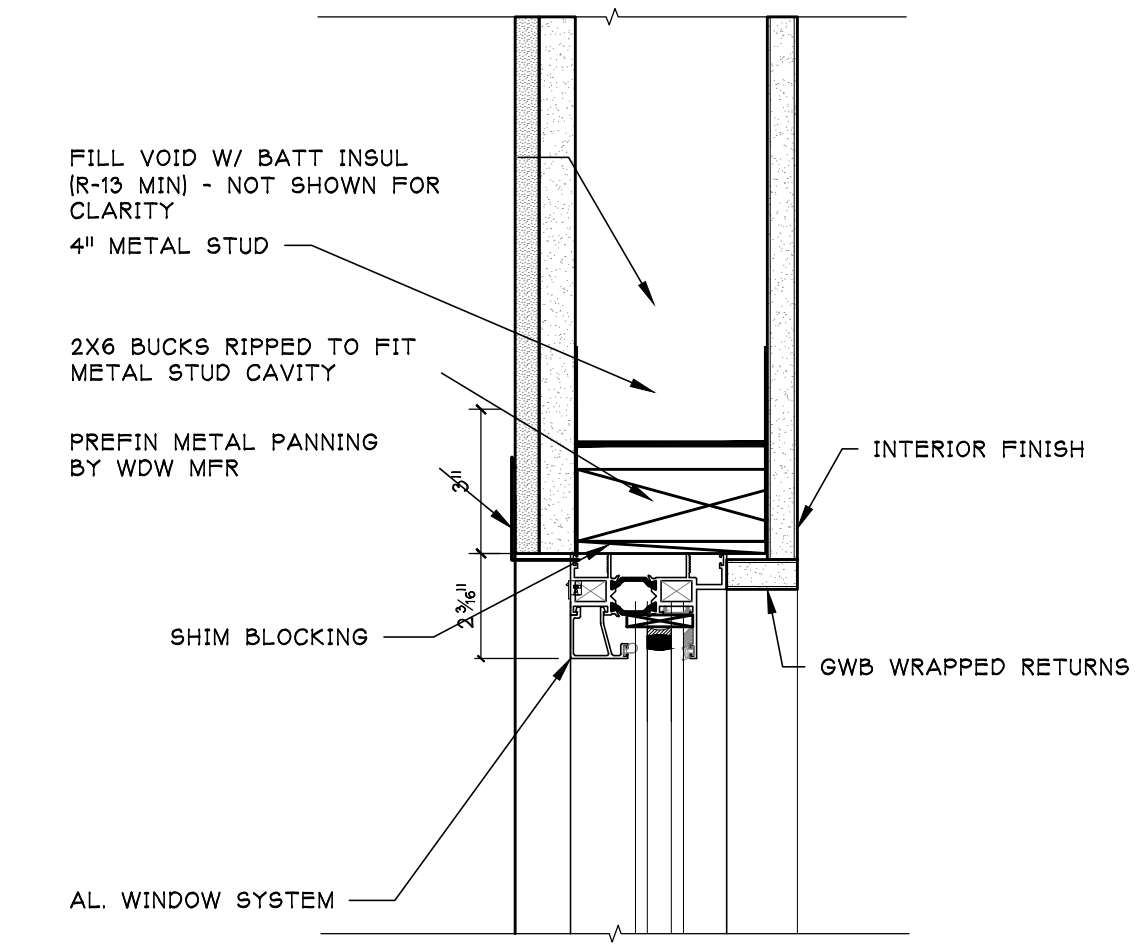
6 EXISTING VERTICAL MULLION WINDOW E2.40
SCALE: 6" = 1' - 0"



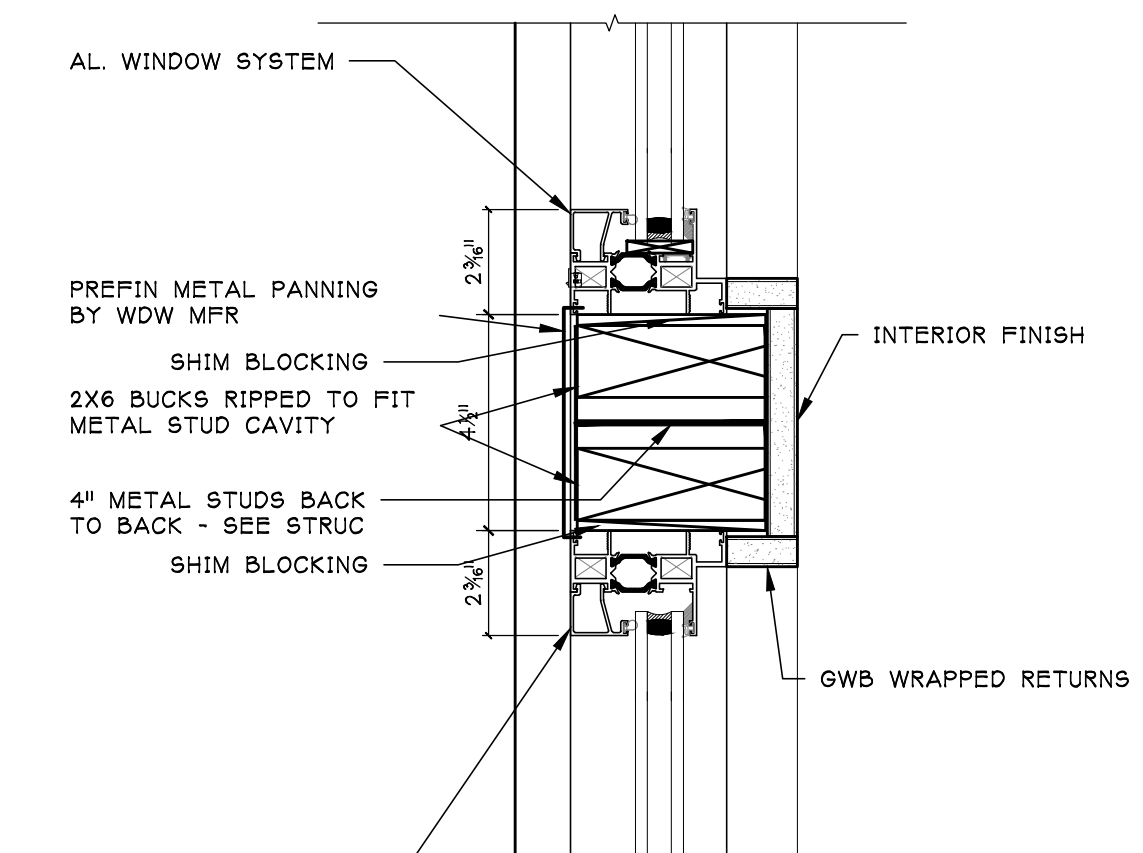
5 REPLICA MUNTIN / SDL
SCALE: 2" = 1' - 0"



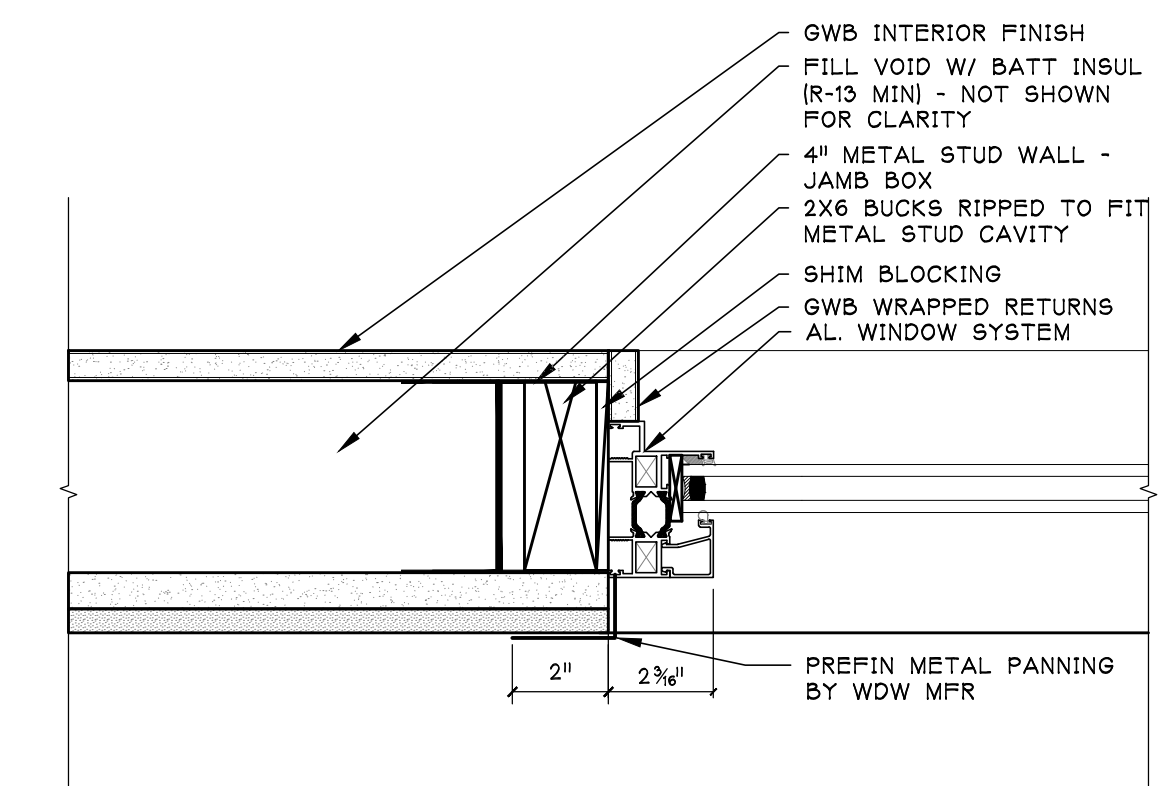
4 WINDOW MUNTINS (EXIST)
SCALE: 2" = 1' - 0"



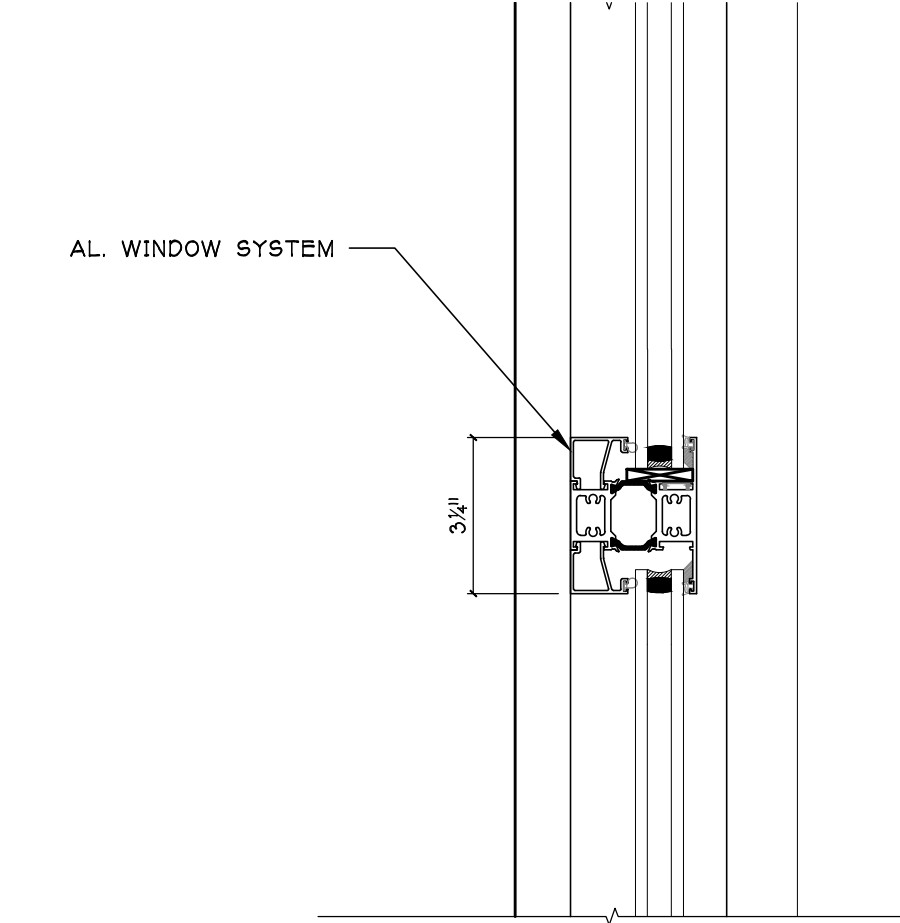
1H WINDOW HEAD @ ENDWALL
SCALE: 3" = 1' - 0"



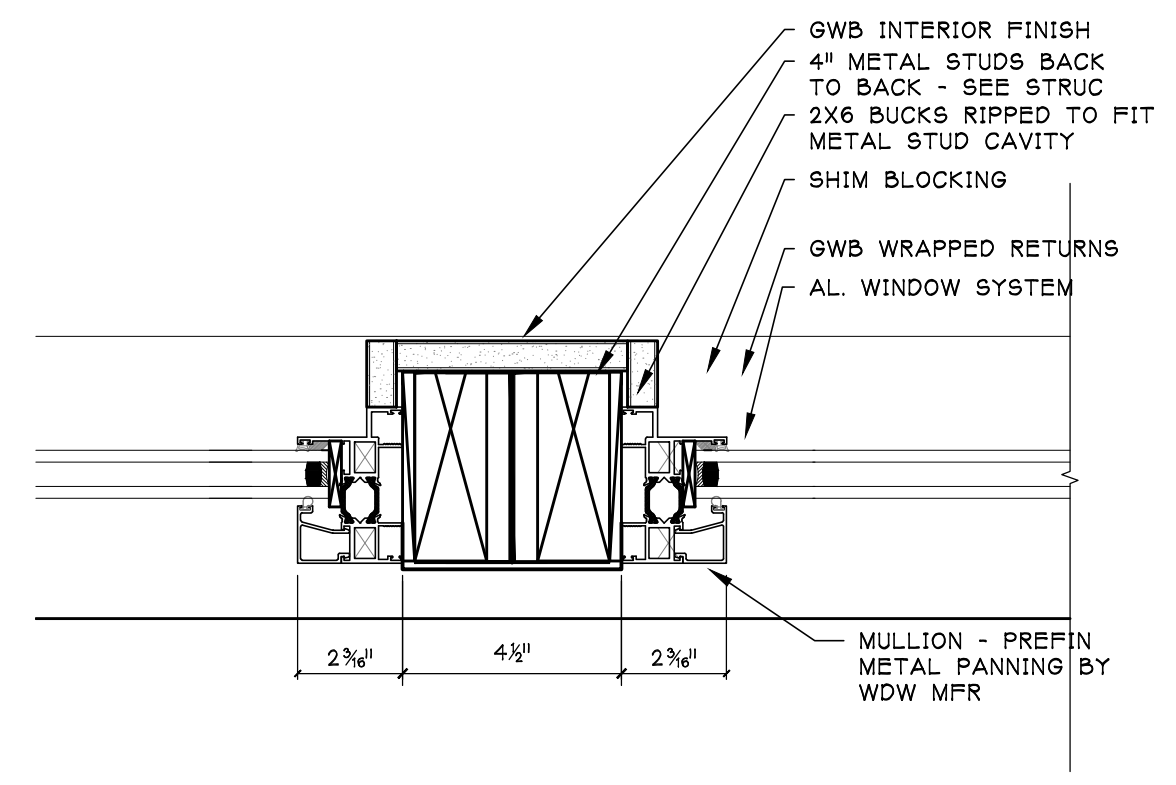
1HM WINDOW HORIZONTAL MULL
SCALE: 3" = 1' - 0"



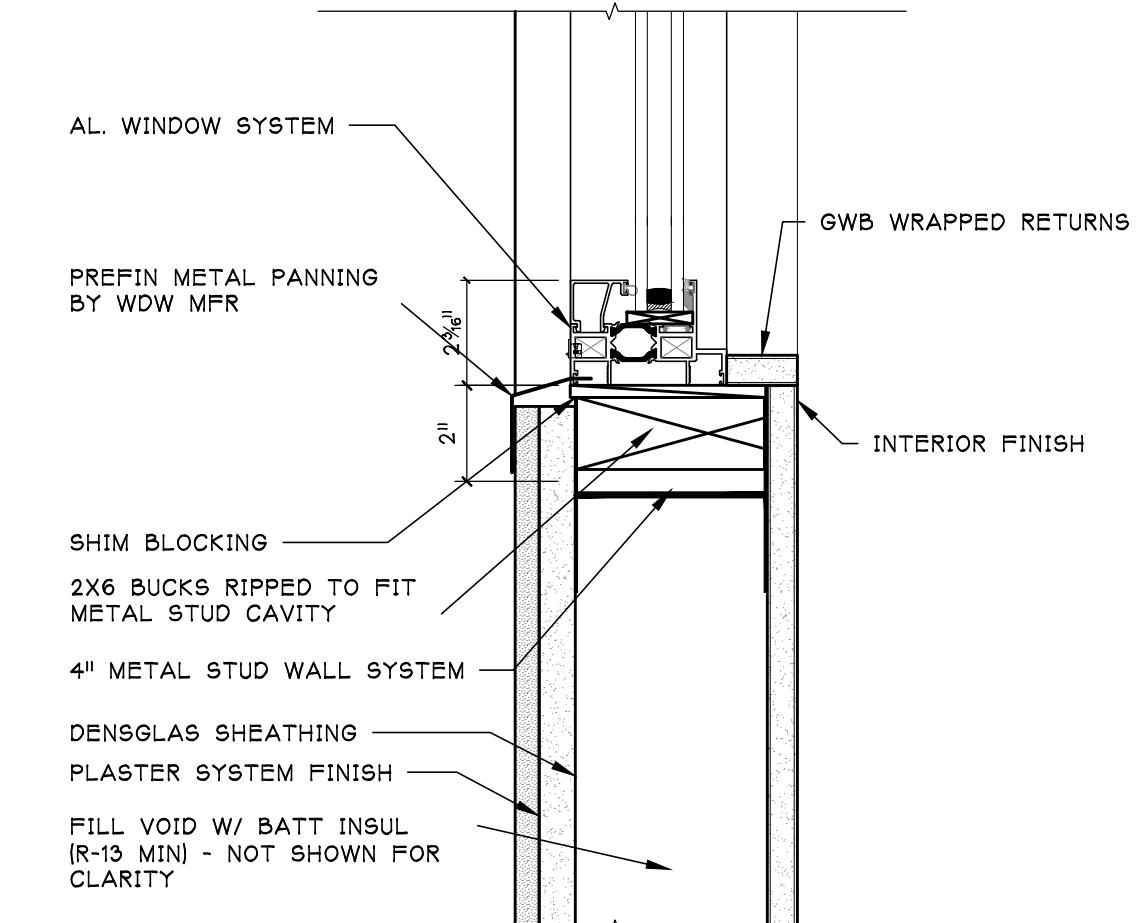
2J WINDOW JAMB @ ENDWALL
SCALE: 3" = 1' - 0"



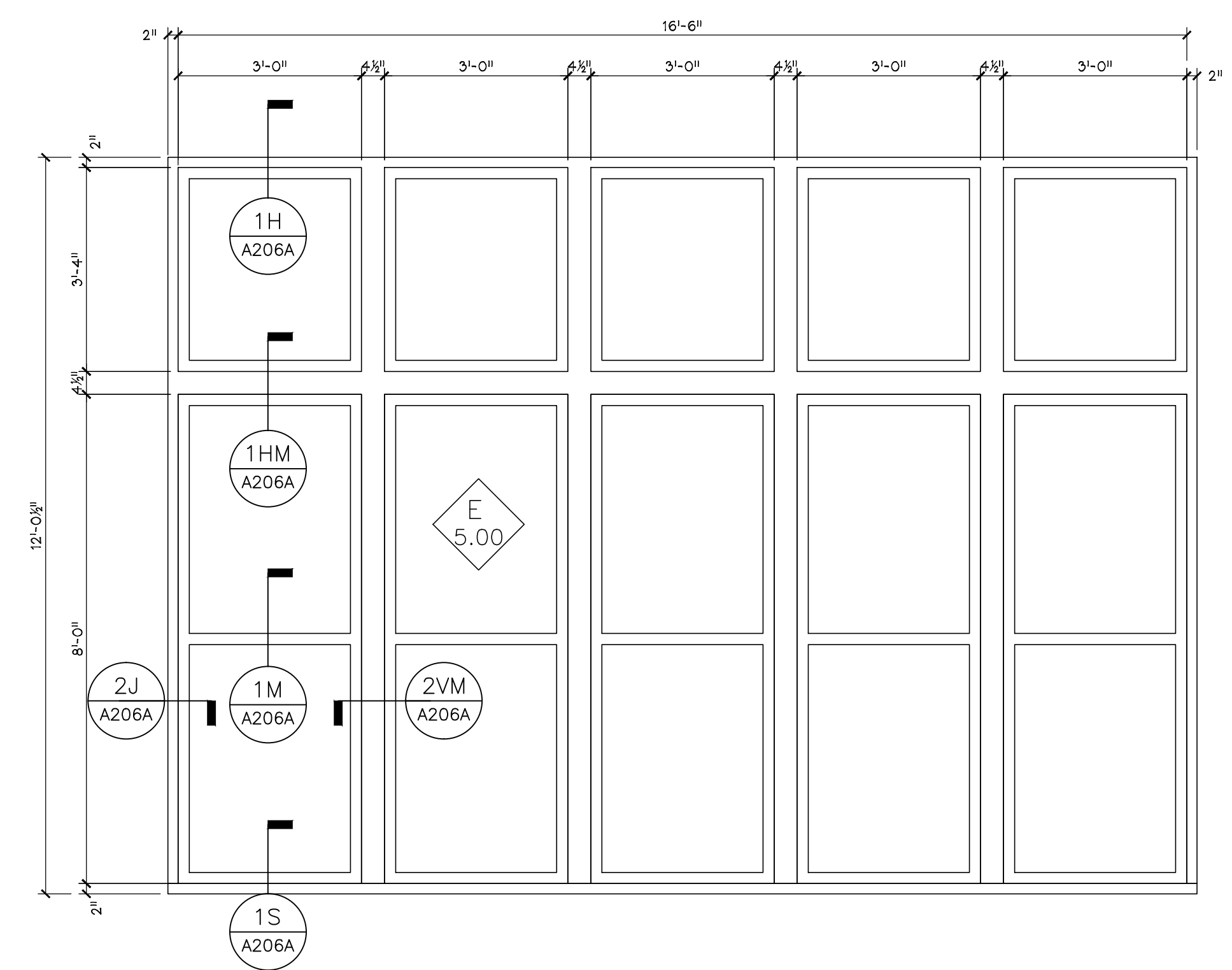
1M WINDOW MEETING RAIL
SCALE: 3" = 1' - 0"



2VM WINDOW VERTICAL MULLION
SCALE: 3" = 1' - 0"



1S WINDOW SILL @ ENDWALL
SCALE: 3" = 1' - 0"



3 WINDOW ELEVATION
SCALE: 1/2" = 1' - 0"

NOTE:
WINDOW TYPE N5.00 CONSISTS OF 10 SEPARATE WINDOW UNITS