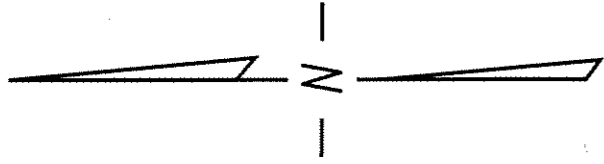


S.E. 1/4 SEC. 20, T.7N., R.22E.

361

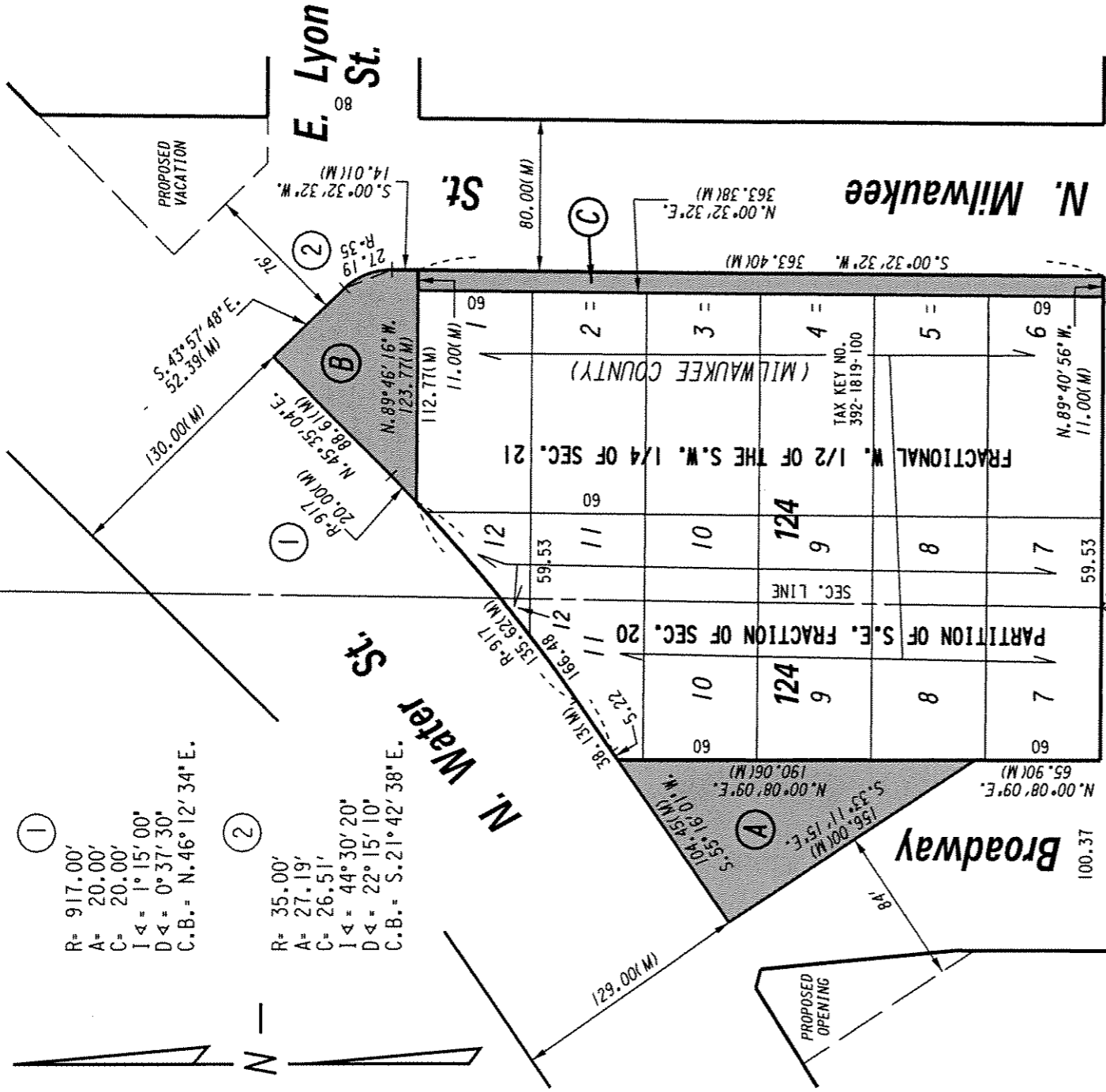
360

S.W. 1/4 SEC. 21, T.7N., R.22E.



①
 R= 917.00'
 A= 20.00'
 C= 20.00'
 I <= 1° 15' 00"
 D <= 0° 37' 30"
 C.B.= N.46° 12' 34" E.

②
 R= 35.00'
 A= 27.19'
 C= 26.51'
 I <= 44° 30' 20"
 D <= 22° 15' 10"
 C.B.= S.21° 42' 38" E.



N.00°54'22"E.
 920.41(M)

S.E. COR. OF
 S.E. 1/4 SEC. 20-7-22

S.W. COR. OF
 S.W. 1/4 SEC. 21-7-22

(M) = MEASURED DISTANCES IN CONJUNCTION WITH
 PROPOSED SUBDIVISION *PARK EAST ON
 THE EAST SIDE OF THE MILWAUKEE RIVER*.

PORTIONS OF PUBLIC
 STREETS PROPOSED
 TO BE VACATED

EXHIBIT "A"
 FILE NO. 041580
 INFRASTRUCTURE SERVICES DIVISION
 MILWAUKEE, WISCONSIN

ASSIGNED TO: W.E. FUCHS
 DRAWN BY: W.E.F.
 PROJECT/GRANT NO.: WK52337209
 APPROVED BY:

CH'K'D. BY: W.E. FUCHS
 DATE: MAY 3, 2005
 SCALE: 1" = 80'

Marciana...
 CENTRAL DRAFTING & RECORDS MANAGER

W. E. Fuchs
 CITY ENGINEER