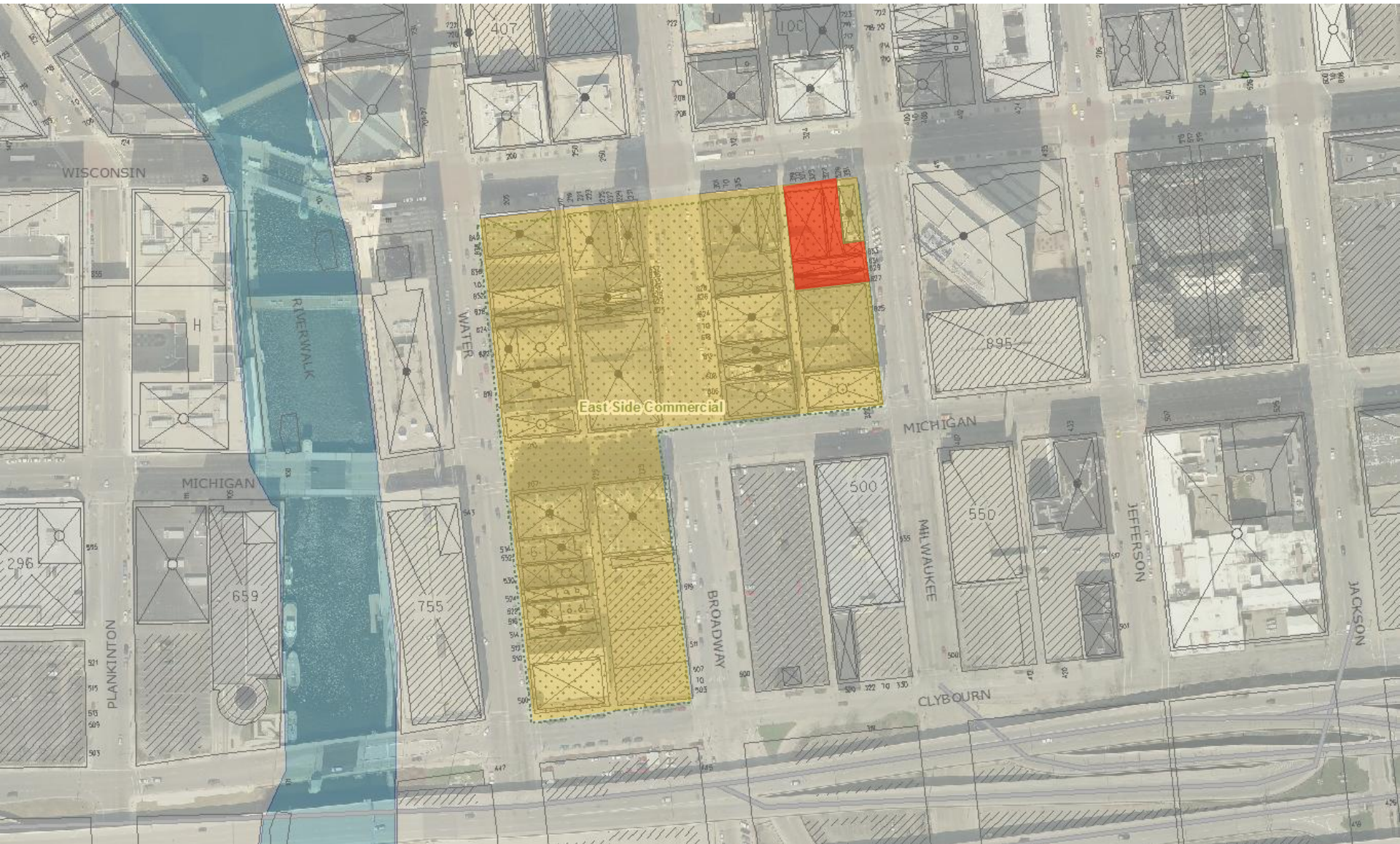


Milwaukee Marriott Update

Special HPC Meeting
September 19, 2011





Current Design

Rendering dated June 1, 2011



Current Design

Rendering dated June 1, 2011



Current Design

Rendering dated June 1, 2011



Current Design

Rendering dated June 1, 2011



Current Design

Rendering dated June 1, 2011



Current Design



Current Design



HPC Original

January, 2011



HPC Original

January, 2011



Comparison of Existing to Proposed



NORTH ELEVATION



SOUTH ELEVATION





NORTH ELEVATION



SOUTH ELEVATION



EAST ELEVATION



WEST ELEVATION

BUILDING ELEVATIONS - MAY 2011 DCD

SCHEMATIC DESIGN II

MARRIOTT MILWAUKEE HOTEL

Milwaukee, WI 53202

KAHLER SLATER PROJECT: 210225.00

JULY 11, 2011

GENERAL
GS 10 TITLE SHEET AND SHEET INDEX
GS 00 PARTITION LEGEND

ARCHITECTURAL
AD 10 ARCHITECTURAL SITE PLAN
AI 01 LOWER LEVEL FLOOR PLAN
AI 02 1ST FLOOR PLAN
AI 03 2ND FLOOR PLAN
AI 04 3RD FLOOR PLAN
AI 05 4TH FLOOR PLAN
AI 06 5TH AND 6TH FLOOR PLANS
AI 07 7TH FLOOR AND ROOF PLANS
AI 08 8TH AND 9TH FLOOR PLANS
AI 10 PENTHOUSE AND ROOF PLANS
AD 11 EXTERIOR ELEVATIONS
AD 12 EXTERIOR ELEVATIONS
AD 13 EXTERIOR ELEVATIONS
AD 14 BUILDING SECTIONS
AD 15 BUILDING SECTIONS
AD 21 WALL SECTIONS
AD 31 ENLARGED GUEST ROOM PLANS AND ELEVATIONS

RESOURCE
V000 SITE SURVEY

NOTE: STRUCTURAL, PLUMBING, MECHANICAL
AND ELECTRICAL DRAWINGS HAVE NOT BEEN
UPDATED WITH THIS SET AND WILL BE ISSUED AT
A FUTURE DATE.

Revisions

SCHEMATIC DESIGN II

Drawing Date
JULY 11, 2011

MARRIOTT MILWAUKEE
HOTEL

Milwaukee, WI 53202


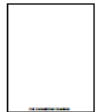


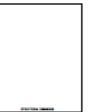


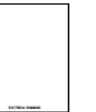


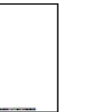

Project No.
210225.00

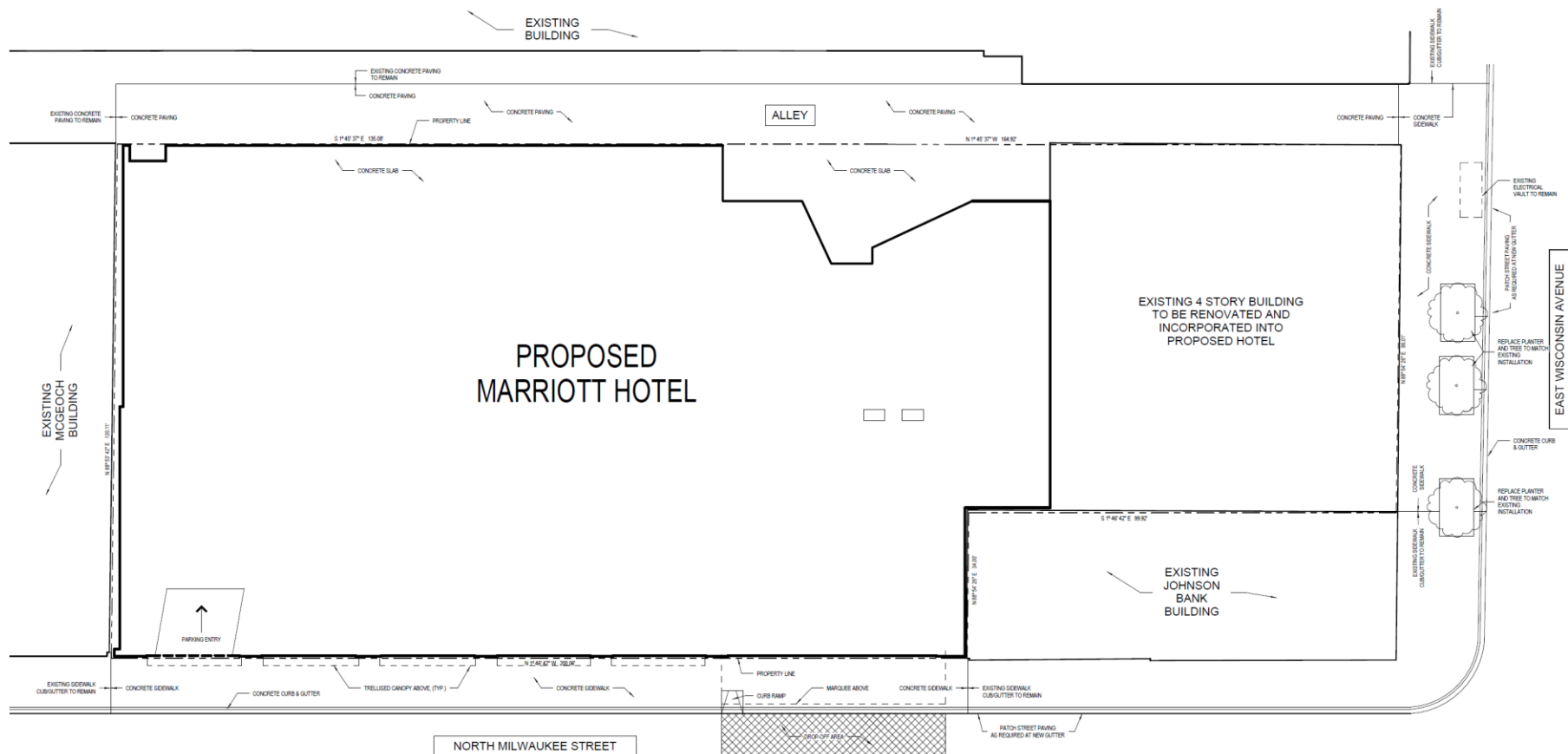
Sheet Title
TITLE SHEET AND
SHEET INDEX

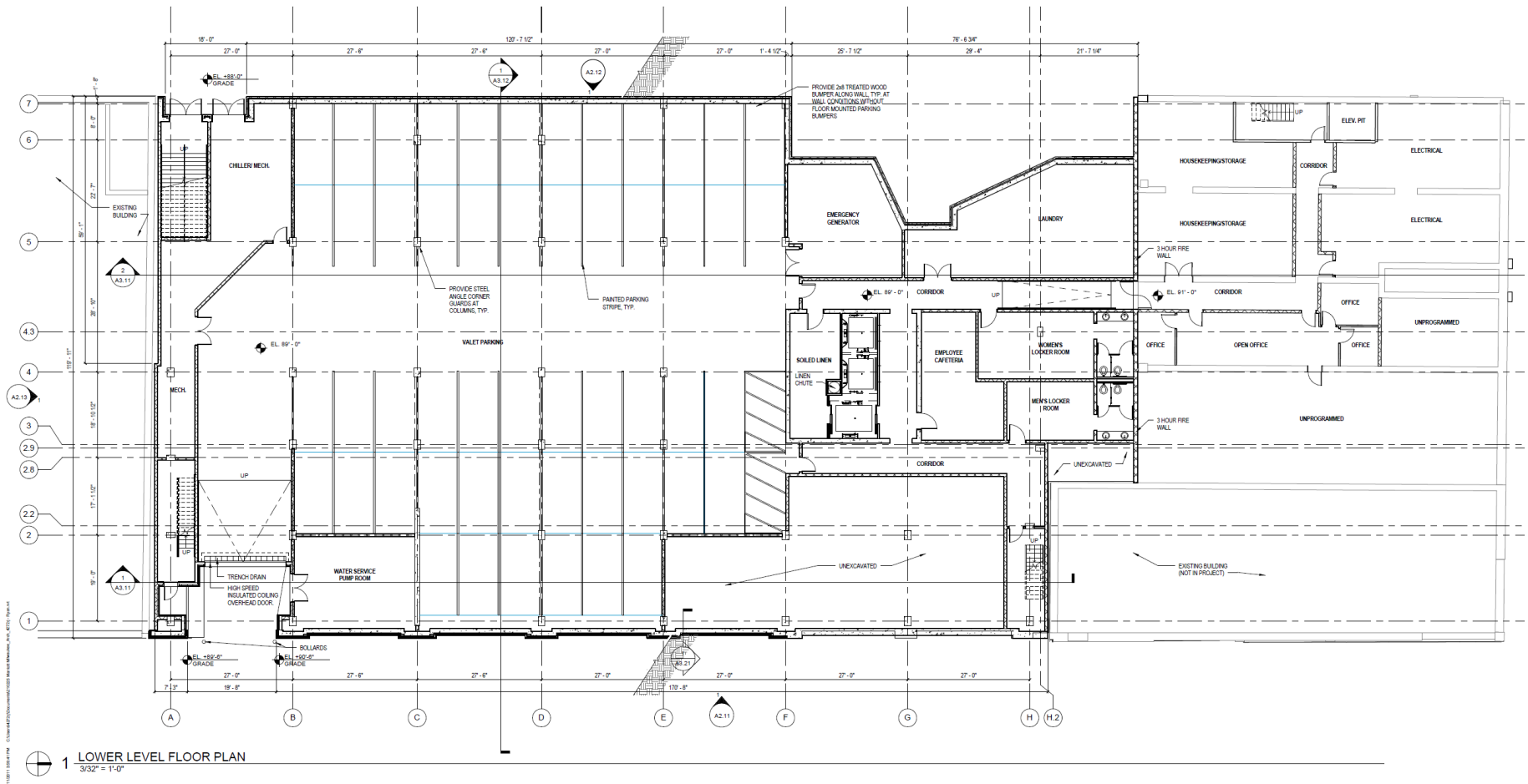
Copyright © 2011 Kahler Slater, Inc. All rights reserved.
1100 North Lincoln Avenue, Suite 100, Milwaukee, WI 53202
Telephone: 414.273.2000 Fax: 414.273.2001

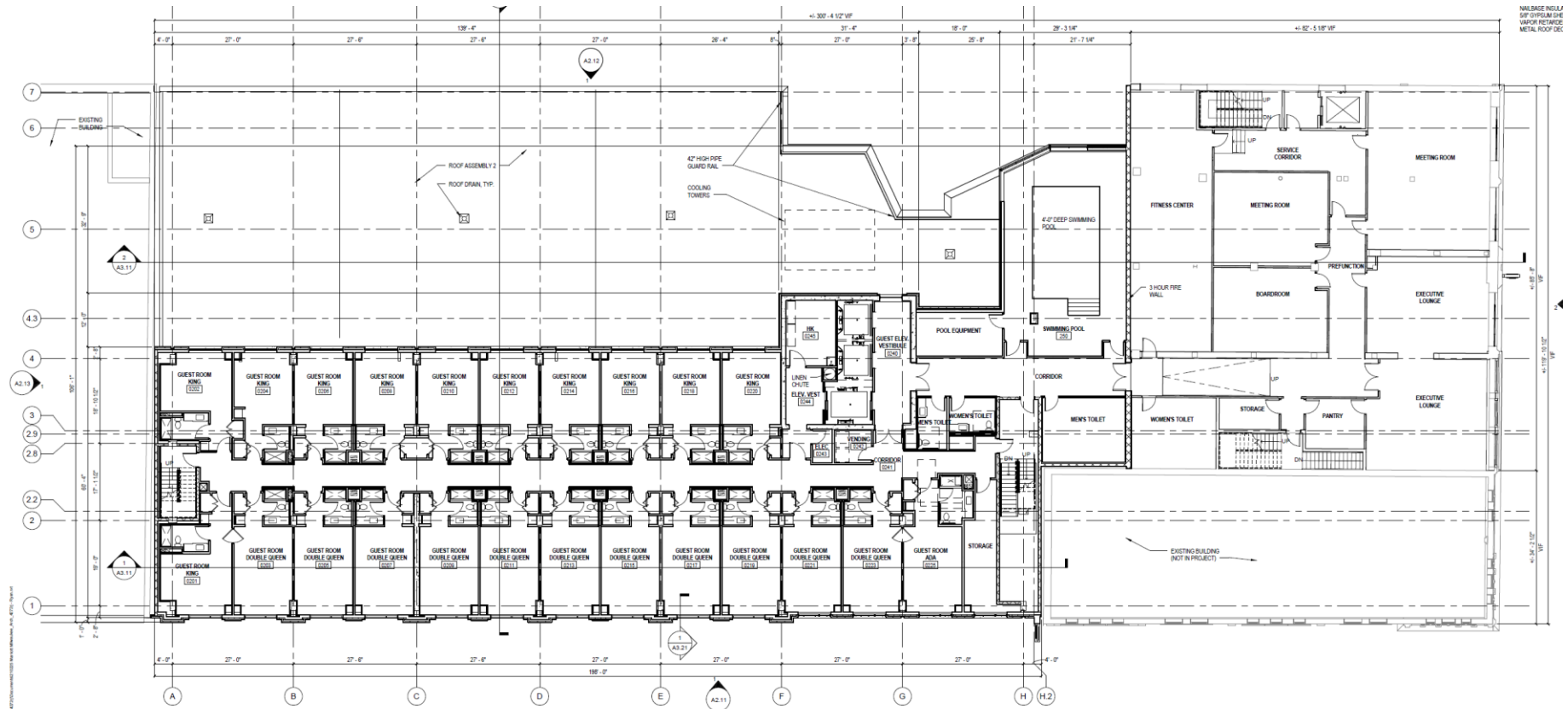
1100 North Lincoln Avenue, Suite 100, Milwaukee, WI 53202
Telephone: 414.273.2000 Fax: 414.273.2001

Sheet No.
GS 10

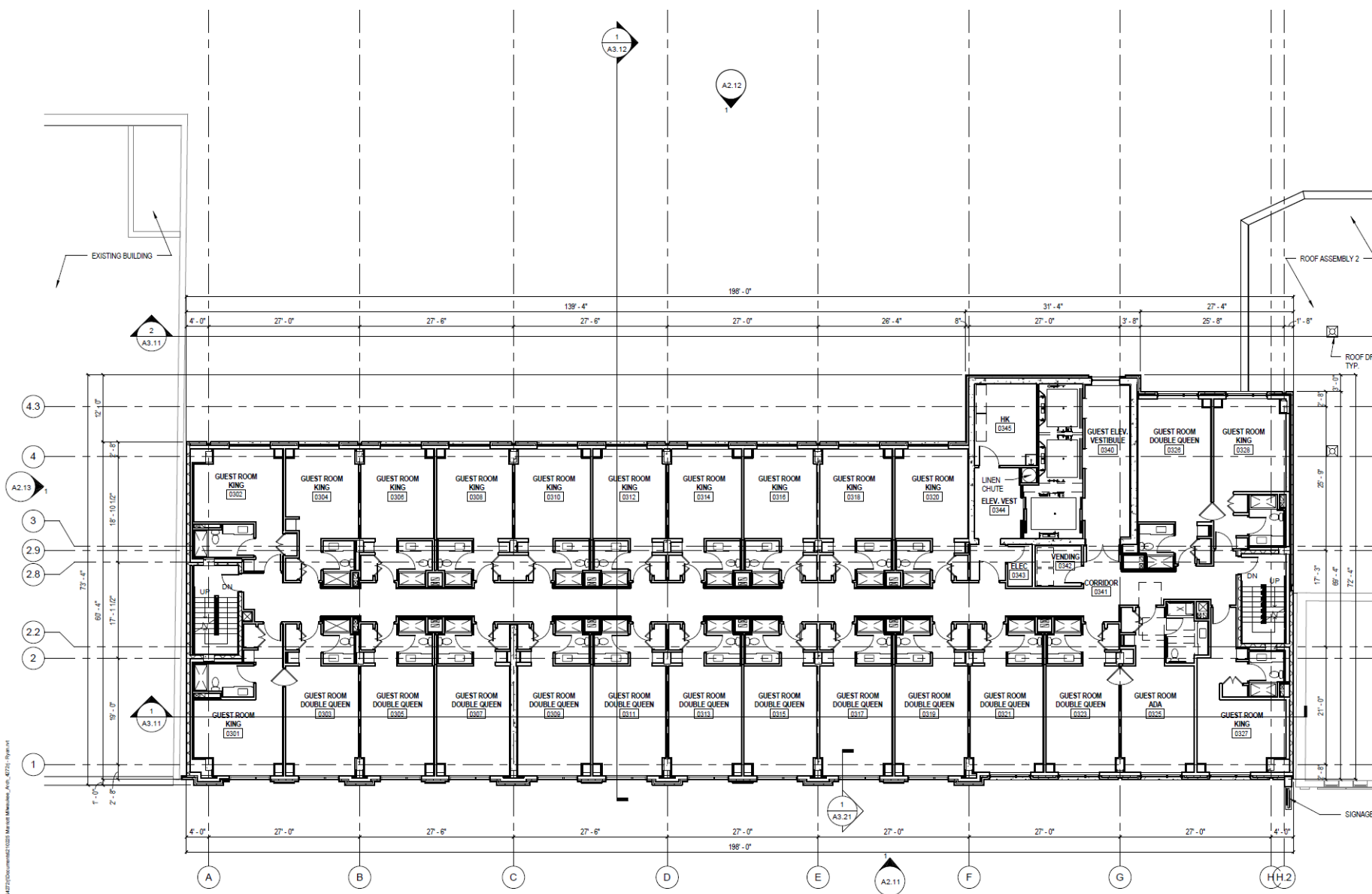
 <p>ARCHITECT KAHLER SLATER 111 W. WISCONSIN AVE. MILWAUKEE, WI 53203 414.273.2000</p>	 <p>CIVIL ENGINEERS THE USHA GROUP 1300 WEST CANAL STREET MILWAUKEE, WI 53233 414.840.4200</p>	 <p>LANDSCAPE ARCHITECT TBD</p>	 <p>INTERIOR DESIGN SMITH & DEARY DESIGN GROUP 800 N. MICHIGAN AVE. CHICAGO, IL 60611 312.274.0866</p>	 <p>STRUCTURAL ENGINEER PERCE ENGINEERS, INC. 241 N. BROADWAY, SUITE 200 MILWAUKEE, WI 53202 414.273.0900</p>	 <p>PLUMBING & FIRE PROTECTION ENGINEER T.B.D.</p>	 <p>MECHANICAL ENGINEER T.B.D.</p>	 <p>ELECTRICAL ENGINEER T.B.D.</p>	 <p>LIGHTING DESIGN T.B.D.</p>	 <p>FOOD SERVICE DESIGN THE KOLTER COMPANIES 10200 WEST RINGVIEW PARKWAY WEST WALKESHA, WI 53188 (262) 523-6200</p>	 <p>TELECOMMUNICATIONS ENGINEER TBD</p>	 <p>AUDIOVISUAL DESIGN TBD</p>
---	---	--	---	--	---	--	---	---	--	--	---



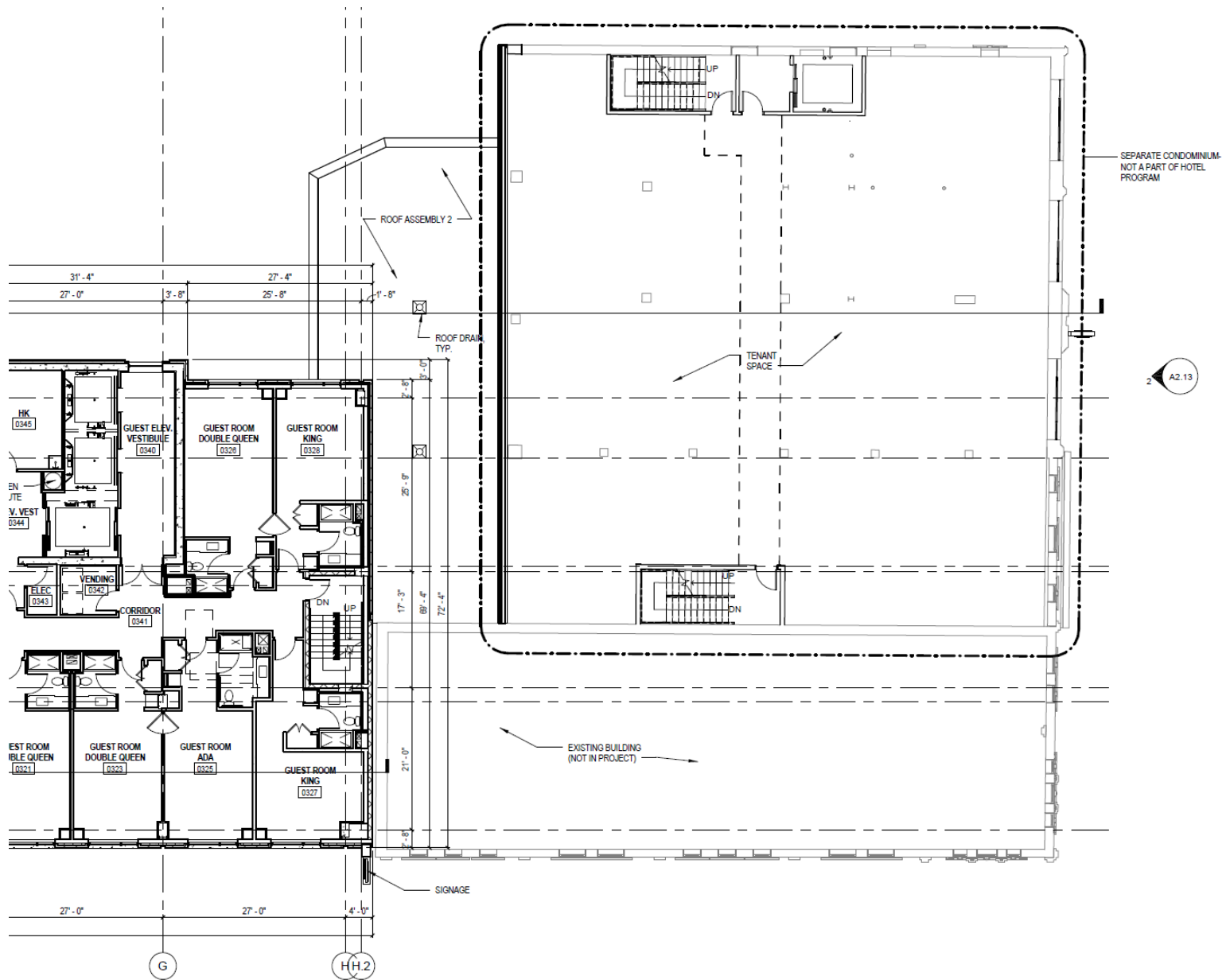


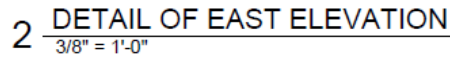


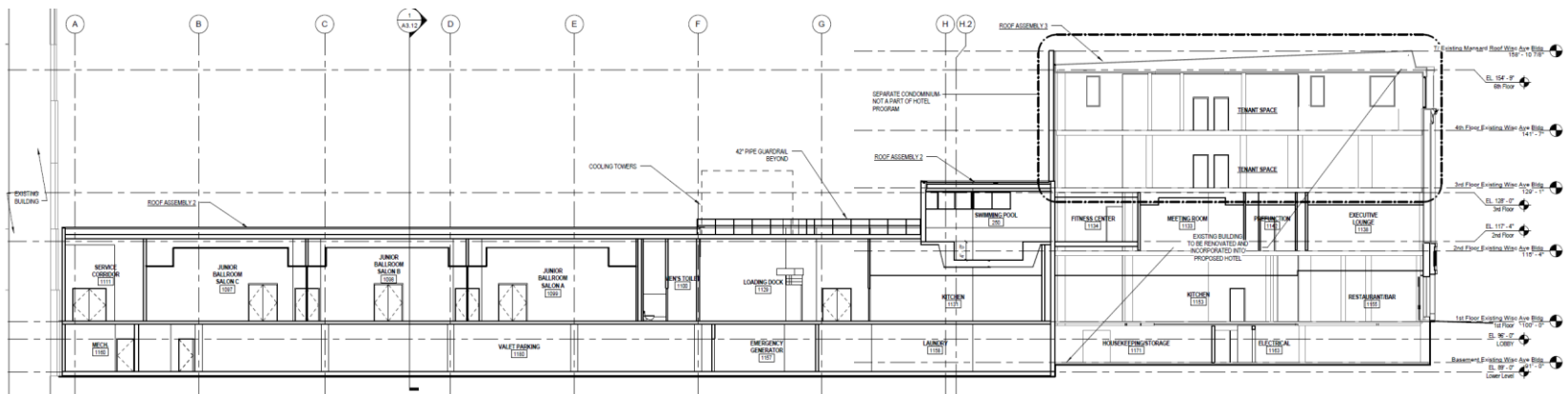
1 2nd FLOOR PLAN
3/32" = 1'-0"



1 3rd FLOOR PLAN
3/32" = 1'-0"



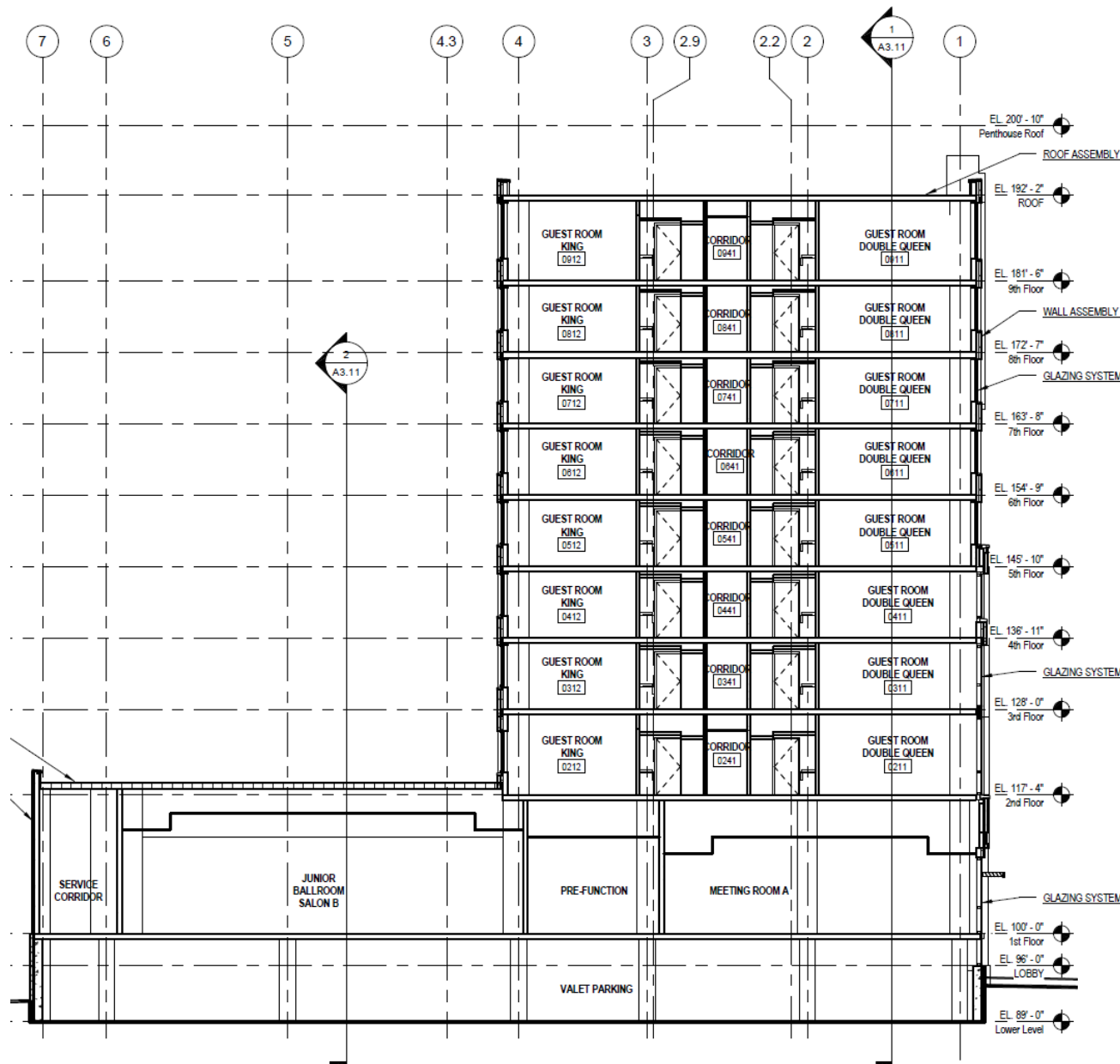




2 NORTH-SOUTH BUILDING SECTION 2
3/32" = 1'-0"

BUILDING ASSEMBLIES AND COMPONENTS
 CANOPY TRUSS: 1.
 PREFABRICATED STEEL METAL ON STEEL FRAMING
 COPING: 1.
 PREFABRICATED ALUMINUM PARAPET CAP FINISH TO MATCH METAL PANEL WITH CONT. HOLD

BUILDING ASSEMBLIES AND COMPONENTS



CANOPY TRUSS 1

PREFINISHED SHEET METAL ON STEEL FRAMING

COPING 1

REFINISHED ALUMINUM PARAPET CAP FINISH TO MATCH METAL PANELS WITH CONT. HOLD DOWN CLIPS OVER TREATED PLYWOOD OR 2X WOOD NAILERS ANCHORED TO COLD FORMED FRAMING. PROVIDE SEALANT AT UNDERSIDE OF DRIP.

GLAZING SYSTEM 1

PRE-FINISHED ALUMINUM WINDOW WALL FRAMING SYSTEM (SIMILAR TO EFCO 200 SERIES) WITH 1" INSULATED LOW E GLASS UNITS. REFER TO ELEVATIONS FOR GLASS UNIT TYPES, THERMAL BREAK, SILL FLASHING AND VARIABLE MULLION COVER DEPTHS

GLAZING SYSTEM 2

PRE-FINISHED ALUMINUM WINDOW SYSTEM (SIMILAR TO EFCO 300S) WITH 1" INSULATED LOW E GLASS UNITS, THERMAL BREAK, SILL FLASHING AND VARIABLE MULLION COVER DEPTHS

GLAZING SYSTEM 3

WOOD DOUBLE HUNG (FIXED) WINDOW WITH 1/2" INSULATED LOW E GLASS UNITS, CUSTOM PROFILE BRICK MOLD, HEAVY COMMERCIAL GRADE, FACTORY-PAINTED FINISH

GLAZING SYSTEM 4

CUSTOM PROFILE WOOD STOREFRONT FRAMING SYSTEM WITH 1" INSULATED LOW E GLASS UNITS, PAINTED FINISH

GLAZING SYSTEM 5

PRE-FINISHED ALUMINUM STOREFRONT FRAMING SYSTEM WITH 1" INSULATED LOW E GLASS UNITS, THERMAL BREAK AND SILL FLASHING

GLAZING SYSTEM 6

PRE-FINISHED ALUMINUM WINDOW SYSTEM WITH 1" INSULATED LOW E GLASS UNITS, THERMAL BREAK AND SILL FLASHING. SIGHT LINE DIMENSIONS OF FRAMING MEMBERS TO MATCH EXIST

GRAVEL STOP 1

CONT. PREFINISHED METAL PERFORATED GRAVEL STOP DETAIL STRIPPED INTO ROOF MEMBRANE

ROOF ASSEMBLY 1

FULLY ADHERED 95 ML NON-REINFORCED EPDM MEMBRANE
POLYISOCYANURATE INSULATION W/ADGLES (R-20 AVG.)
PROVIDE TAPERED INSULATION AS INDICATED ON ROOF PLAN
BITUMINOUS VAPOR RETARDER
CONCRETE SLAB

ROOF ASSEMBLY 2

DECORATIVE BALLAST
2" THICK CONCRETE ROOF PAVERS AT PERIMETER OF ROOF AND SERVICE WALKS
LOOSE LAD 85 ML NON-REINFORCED EPDM MEMBRANE
POLYISOCYANURATE INSULATION W/ADGLES (R-20 AVG.)
PROVIDE TAPERED INSULATION AS INDICATED ON ROOF PLAN
BITUMINOUS VAPOR RETARDER
5/8" GYPSUM SHEATHING (DENSEDECK)
METAL ROOF DECK

ROOF ASSEMBLY 3

DECORATIVE BALLAST
2" THICK CONCRETE ROOF PAVERS AT PERIMETER OF ROOF AND SERVICE WALKS
LOOSE LAD 85 ML NON-REINFORCED EPDM MEMBRANE
POLYISOCYANURATE INSULATION W/ADGLES (R-20 AVG.)
PROVIDE TAPERED INSULATION AS INDICATED ON ROOF PLAN
BITUMINOUS VAPOR RETARDER
EXISTING WOOD DECK & STRUCTURE

ROOF ASSEMBLY 4

FULLY ADHERED 95 ML NON-REINFORCED EPDM MEMBRANE
POLYISOCYANURATE INSULATION W/ADGLES (R-20 AVG.)
PROVIDE TAPERED INSULATION AS INDICATED ON ROOF PLAN
BITUMINOUS VAPOR RETARDER
EXISTING WOOD DECK & STRUCTURE

ROOF ASSEMBLY 5

KYNAR FINISHED ARCHITECTURAL STANDING SEAM METAL ROOFING (12" FLAT PANEL)
NO. 30 FELT UNDERLAYMENT
NAILBASE INSULATION, 3/4" EXTERIOR PLYWOOD FACING, R-25 MIN.
5/8" GYPSUM SHEATHING (DENSEDECK)
VAPOR RETARDER
METAL ROOF DECK

SOFFIT.1

RESINOUS COMPOSITE PANEL

WALL ASSEMBLY 1

4" MODULAR CLAY BRICK VENEER WITH WEEPVENTS MATCHED TO THE MORTAR COLOR
REFER TO ELEVATIONS FOR DETAILS AND PATTERNS
AIRSPACE
2" RIGID INSULATION (POLYISOCYANURATE)
AIRWATER BARRIER (GRADE PERMA-BARRIER)
5/8" GYPSUM SHEATHING
9" COLD-FORMED METAL FRAMING @ 16" O.C. MAX.
5/8" GYPSUM BOARD AT EXPOSED LOCATIONS

WALL ASSEMBLY 2

2" STONE VENEER
REFER TO ELEVATIONS FOR STONE TYPES
AIRSPACE
2" RIGID INSULATION (POLYISOCYANURATE)
AIRWATER BARRIER (GRADE PERMA-BARRIER)
5/8" GYPSUM SHEATHING
9" COLD-FORMED METAL FRAMING @ 16" O.C. MAX.
5/8" GYPSUM BOARD AT EXPOSED LOCATIONS

WALL ASSEMBLY 3

COMPOSITE ALUMINUM METAL PANEL SYSTEM DRY SEAL
AIR SPACE
2" RIGID INSULATION (POLYISOCYANURATE)
AIRWATER BARRIER (GRADE PERMA-BARRIER)
5/8" GYPSUM SHEATHING
9" COLD-FORMED METAL FRAMING @ 16" O.C. MAX.
5/8" GYPSUM BOARD AT EXPOSED LOCATIONS

WALL ASSEMBLY 4

INSULATED METAL PANEL
AIRWATER BARRIER (GRADE PERMA-BARRIER)
5/8" GYPSUM SHEATHING
9" COLD-FORMED METAL FRAMING @ 16" O.C. MAX.
5/8" GYPSUM BOARD AT EXPOSED LOCATIONS

WALL ASSEMBLY 5

2" STONE VENEER
REFER TO ELEVATIONS FOR STONE TYPES
AIRSPACE
2" RIGID INSULATION (EXTRUDED POLYSTYRENE)
WATERPROOFING (GRADE PERMA-BARRIER)
CONCRETE WALL

WALL ASSEMBLY 6

4" SPLIT FACE CONCRETE MASONRY UNITS
AIR SPACE
2" RIGID INSULATION (EXTRUDED POLYSTYRENE)
AIRWATER BARRIER (GRADE PERMA-BARRIER)
8" CONCRETE MASONRY UNITS

Current Design

July 11, 2011

BUILDING ASSEMBLIES AND COMPONENTS

CANOPY TRELLIS 1: PREFINISHED SHEET METAL ON STEEL FRAMING

COPING 1:
PREFINISHED ALUMINUM PARAPET CAP (FINISH TO MATCH METAL PANEL) WITH CONT. HOLD DOWN CLIPS OVER TREATED PLYWOOD OR 2X WOOD NAILERS ANCHORED TO COLD FORMED FRAMING. PROVIDE SEALANT AT UNDERSIDE OF DRIP.

GLAZING SYSTEM 1:
PRE-FINISHED ALUMINUM WINDOW WALL FRAMING SYSTEM (SIMILAR TO EFCO 2000 SERIES) WITH 1" INSULATED LOW E GLASS UNITS (REFER TO ELEVATIONS FOR GLASS UNIT TYPE), THERMAL BREAK, SILL FLASHING AND VARIABLE MULLION COVER DEPTHS

GLAZING SYSTEM 2:
PRE-FINISHED ALUMINUM WINDOW SYSTEM (SIMILAR TO EFCO 325X) WITH 1" INSULATED LOW E GLASS UNITS, THERMAL BREAK, SILL FLASHING AND VARIABLE MULLION COVER DEPTHS

GLAZING SYSTEM 3:
WOOD DOUBLE HUNG (FIXED) WINDOW WITH 7/8" INSULATED LOW E GLASS UNITS, CUSTOM-PROFILE BRICK MOLD, HEAVY COMMERCIAL GRADE, FACTORY-PAINTED FINISH

GLAZING SYSTEM 4:
CUSTOM-PROFILE WOOD STOREFRONT FRAMING SYSTEM WITH 1" INSULATED LOW E GLASS UNITS, PAINTED FINISH

GLAZING SYSTEM 5:
PRE-FINISHED ALUMINUM STOREFRONT FRAMING SYSTEM WITH 1" INSULATED LOW E GLASS UNITS, THERMAL BREAK AND SILL FLASHING

GLAZING SYSTEM 6:
PRE-FINISHED ALUMINUM WINDOW SYSTEM WITH 1" INSULATED LOW E GLASS UNITS, THERMAL BREAK AND SILL FLASHING. SIGHT LINE DIMENSIONS OF FRAMING MEMBERS TO MATCH EXISTING

GRAVEL STOP 1:
CONT. PREFINISHED METAL PERFORATED GRAVEL STOP DETAIL STRIPPED INTO ROOF MEMBRANE.

ROOF ASSEMBLY 1:
FULLY ADHERED 60 MIL. NON-REINFORCED EPDM MEMBRANE
POLYISOCYANURATE INSULATION WISADDLES (R-20 AVG).
PROVIDE TAPERED INSULATION AS INDICATED ON ROOF PLAN
BITUMINOUS VAPOR RETARDER
CONCRETE SLAB

ROOF ASSEMBLY 2:
DECORATIVE BALLAST
2" THICK CONCRETE ROOF PAVERS AT PERIMETER OF ROOF AND SERVICE WALKS
LOOSE LAID 60 MIL. NON-REINFORCED EPDM MEMBRANE
POLYISOCYANURATE INSULATION WISADDLES (R-20 AVG).
PROVIDE TAPERED INSULATION AS INDICATED ON ROOF PLAN
BITUMINOUS VAPOR RETARDER
5/8" GYPSUM SHEATHING (DENSDECK)
METAL ROOF DECK

ROOF ASSEMBLY 3:
DECORATIVE BALLAST
2" THICK CONCRETE ROOF PAVERS AT PERIMETER OF ROOF AND SERVICE WALKS
LOOSE LAID 60 MIL. NON-REINFORCED EPDM MEMBRANE
POLYISOCYANURATE INSULATION WISADDLES (R-20 AVG).
PROVIDE TAPERED INSULATION AS INDICATED ON ROOF PLAN
BITUMINOUS VAPOR RETARDER
EXISTING WOOD DECK & STRUCTURE

ROOF ASSEMBLY 4:
FULLY ADHERED 60 MIL. NON-REINFORCED EPDM MEMBRANE
POLYISOCYANURATE INSULATION WISADDLES (R-20 AVG).
PROVIDE TAPERED INSULATION AS INDICATED ON ROOF PLAN
BITUMINOUS VAPOR RETARDER
EXISTING WOOD DECK & STRUCTURE

ROOF ASSEMBLY 5:
KYNAR FINISHED ARCHITECTURAL STANDING SEAM METAL ROOFING (12" FLAT PANEL)
NO. 30 FELT UNDERLAYMENT
NAILBASE INSULATION, 3/4" EXTERIOR PLYWOOD FACING, R-25 MIN.
5/8" GYPSUM SHEATHING (DENSDECK)
VAPOR RETARDER
METAL ROOF DECK

SOFFIT 1:
RESINOUS COMPOSITE PANEL

WALL ASSEMBLY 1:
4" MODULAR CLAY BRICK VENEER WITH WEEP/VENTS MATCHED TO THE MORTAR COLOR
REFER TO ELEVATIONS FOR DETAILS AND PATTERNS
AIRSPACE

2" RIGID INSULATION (POLYISOCYANURATE)
AIR/WATER BARRIER (GRACE PERM-A-BARRIER)
5/8" GYPSUM SHEATHING
6" COLD-FORMED METAL FRAMING @ 16" O.C. MAX.
5/8" GYPSUM BOARD AT EXPOSED LOCATIONS

WALL ASSEMBLY 2:
2" STONE VENEER
REFER TO ELEVATIONS FOR STONE TYPES
AIRSPACE

2" RIGID INSULATION (POLYISOCYANURATE)
AIR/WATER BARRIER (GRACE PERM-A-BARRIER)
5/8" GYPSUM SHEATHING
6" COLD-FORMED METAL FRAMING @ 16" O.C. MAX.
5/8" GYPSUM BOARD AT EXPOSED LOCATIONS

WALL ASSEMBLY 3:
COMPOSITE ALUMINUM METAL PANEL SYSTEM- DRY SEAL
AIR SPACE
2" RIGID INSULATION (POLYISOCYANURATE)
AIR/WATER BARRIER (GRACE PERM-A-BARRIER)
5/8" GYPSUM SHEATHING
6" COLD-FORMED METAL FRAMING @ 16" O.C. MAX.
5/8" GYPSUM BOARD AT EXPOSED LOCATIONS

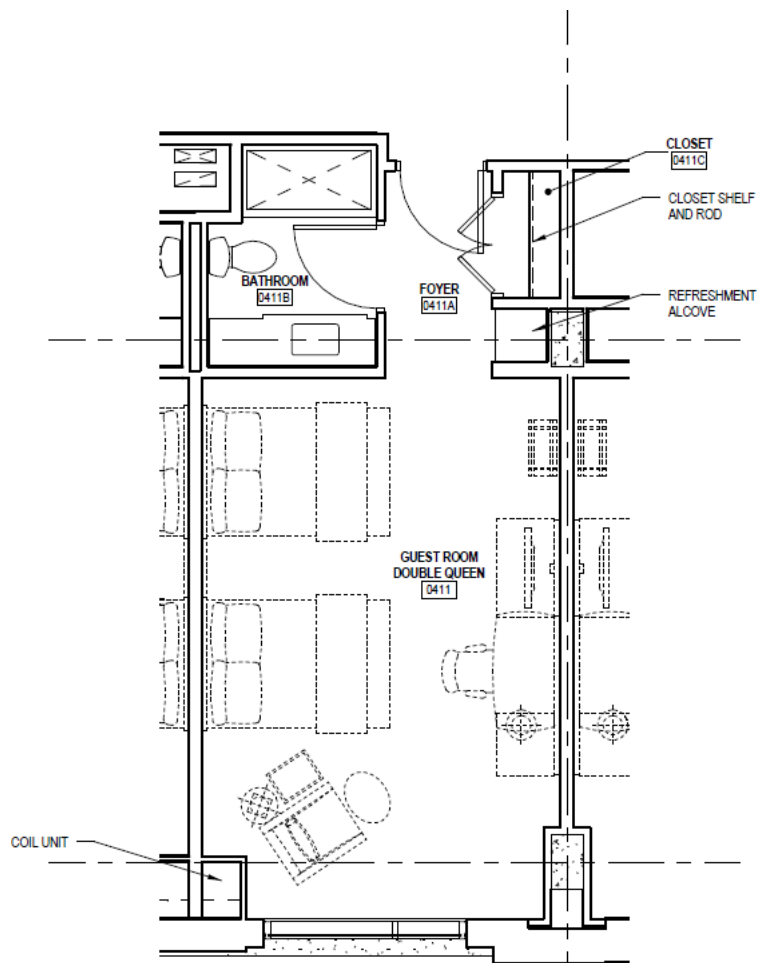
WALL ASSEMBLY 4:
INSULATED METAL PANEL
AIR/WATER BARRIER (GRACE PERM-A-BARRIER)
5/8" GYPSUM SHEATHING
6" COLD-FORMED METAL FRAMING @ 16" O.C. MAX.
5/8" GYPSUM BOARD AT EXPOSED LOCATIONS

WALL ASSEMBLY 5:
2" STONE VENEER
REFER TO ELEVATIONS FOR STONE TYPES
AIRSPACE
2" RIGID INSULATION (EXTRUDED POLYSTYRENE)
WATERPROOFING (GRACE PERM-A-BARRIER)
CONCRETE WALL

WALL ASSEMBLY 6:
4" SPLIT FACE CONCRETE MASONRY UNITS
AIR SPACE
2" RIGID INSULATION (EXTRUDED POLYSTYRENE)
AIR/WATER BARRIER (GRACE PERM-A-BARRIER)
6" CONCRETE MASONRY UNITS

2 EAST WALL SECTION 5th FLOOR - ROOF
3/8" = 1'-0"

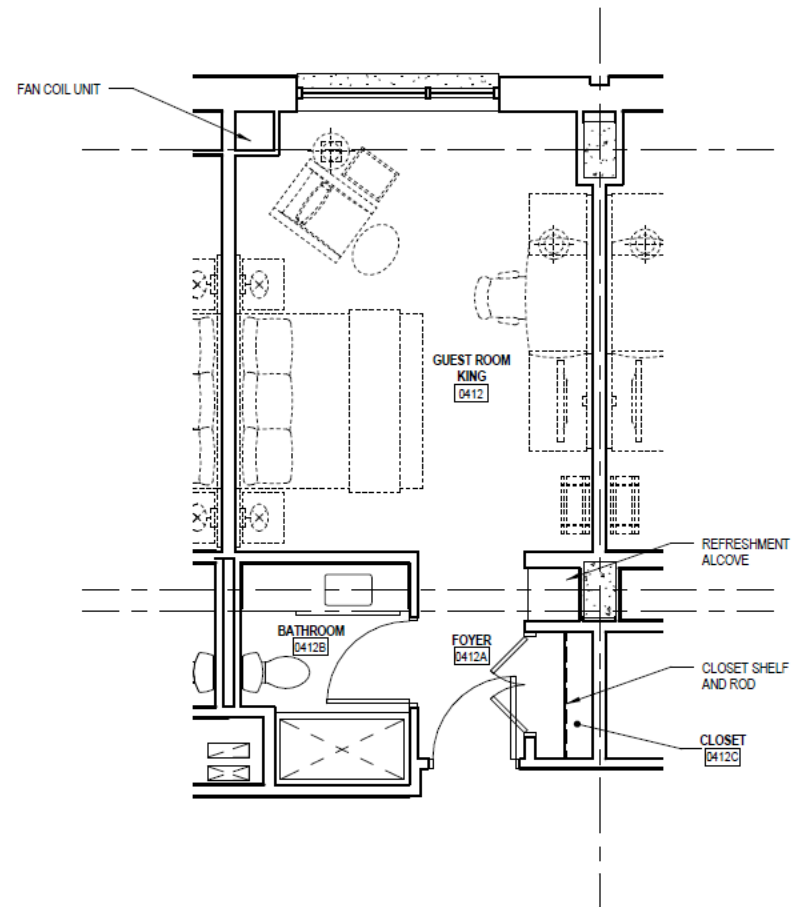
1 EAST WALL SECTION LOWER LEVEL-4th FLOOR
3/8" = 1'-0"



GUEST ROOM TYPE DQ1 -
FLOOR PLAN

10

1/4" = 1'-0"



GUEST ROOM TYPE K1 -
FLOOR PLAN

7

1/4" = 1'-0"