

2018



Legislative Reference Bureau

www.milwaukee.gov/lrb



ELECTION COMMISSION

2018 Proposed Plan and Executive Budget Review

Prepared by: Teodros W. Medhin, Ph.D., Legislative Research Supervisor

Budget Hearing: 3:30 pm on Tuesday, October 10, 2017

Last Updated October 4, 2017

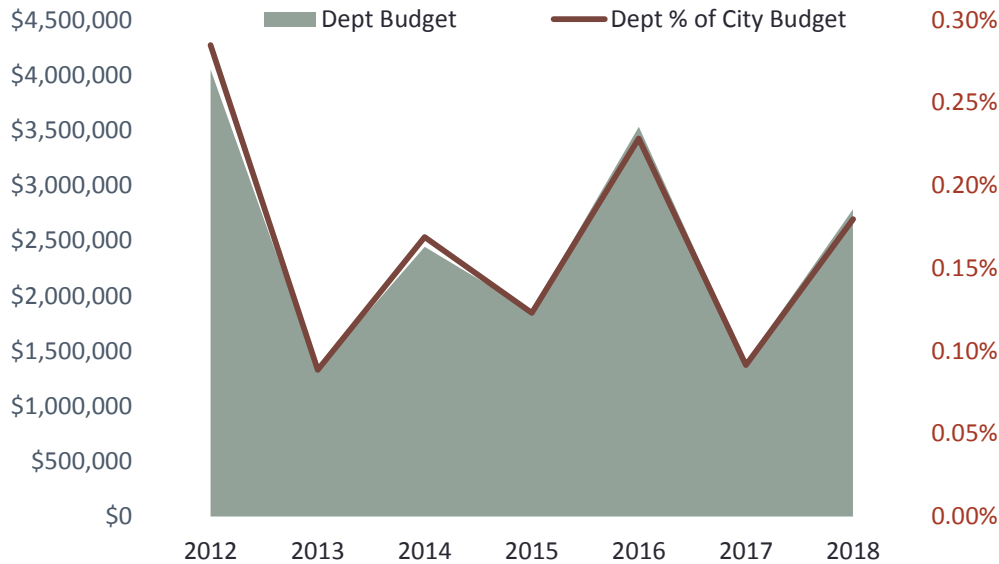
Version 1.2



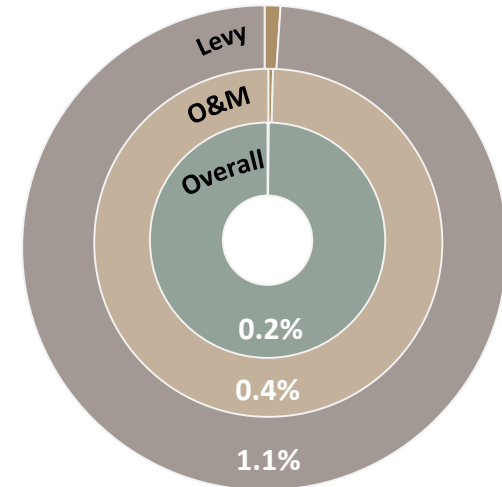
\$2,784,886
Proposed 2018 Budget

\$1,387,050
Change in Proposed Budget

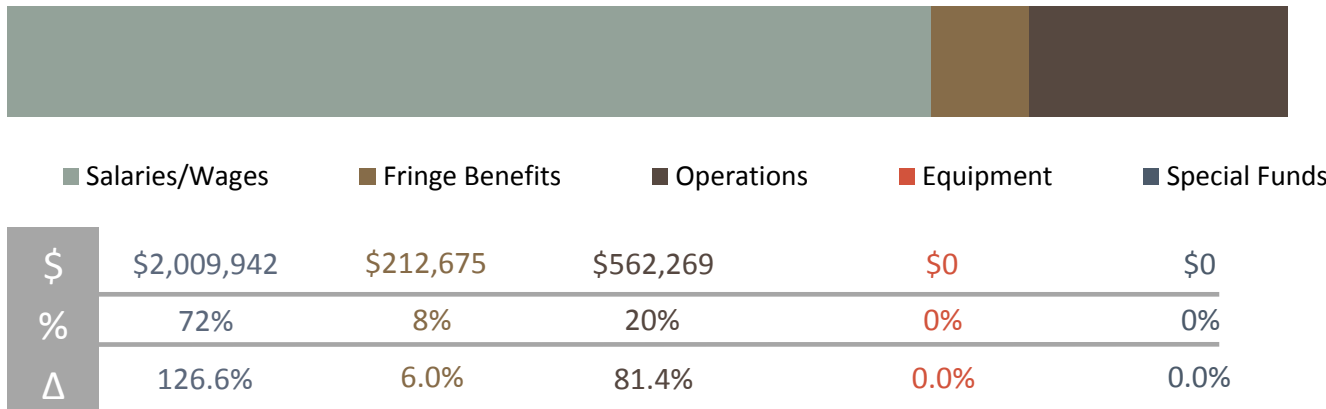
99.2%
% Change in Proposed Budget



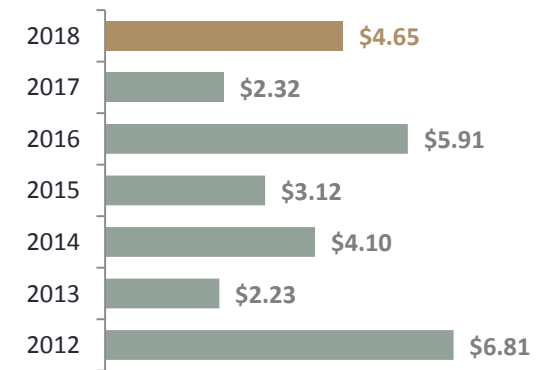
Departmental Budget Impact



Departmental Budget Appropriation Category



Budget per Capita



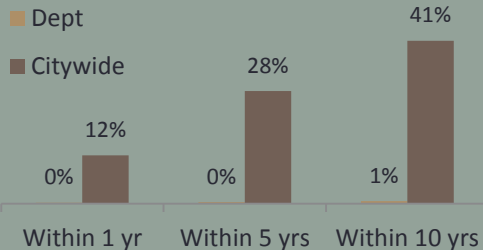
\$1,122,809

Increase in Salaries and Wages for the department, up 126.6%.

\$252,269

Increase in Operating Expenditures, up 81.4%.

Retirement Eligible



1441

Change in Positions

1

Current Vacancies

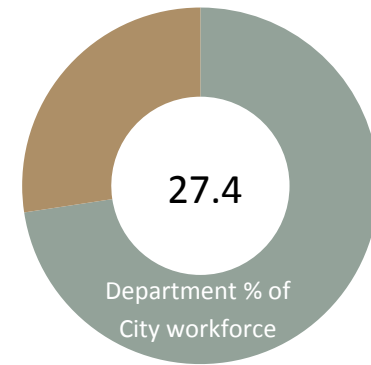
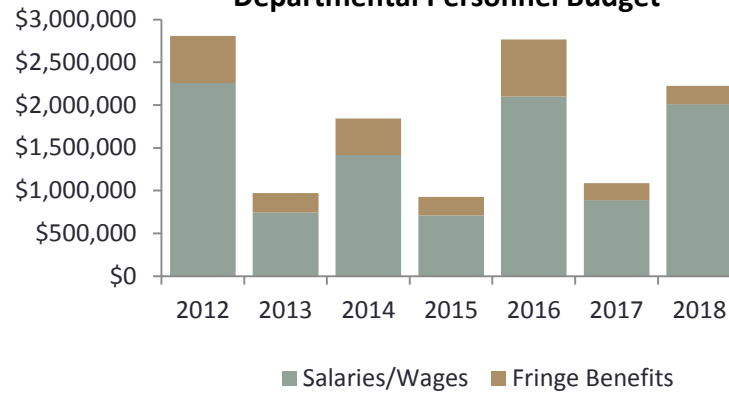
175.7

% Change in Positions

1

Voluntary Separations

Departmental Personnel Budget

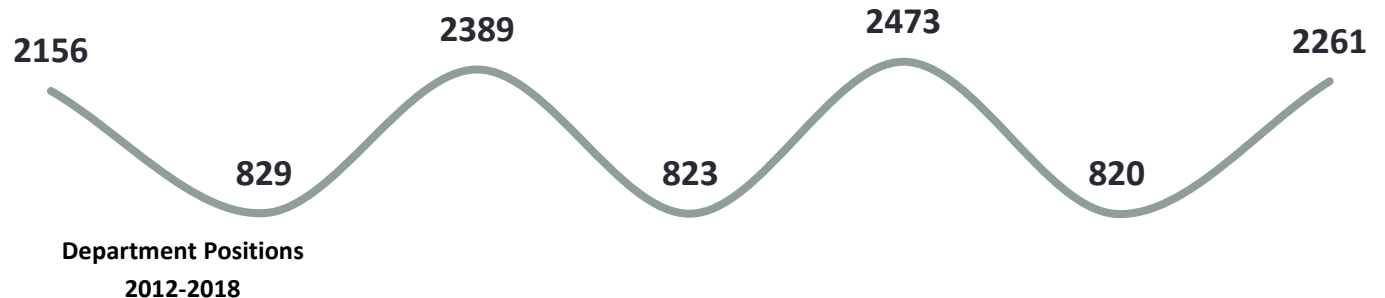


Staffing Vacancies

The department's Bilingual Election Worker position (PA1) has been vacant since May 2017. Recruitment for the position has begun and anticipated to be filled by the end of 2017. Duties normally performed by the position have been assigned to the remaining Election Worker Coordinator and the Deputy Director.

Authorized Positions

The number of authorized positions in the department rises from 820 to 2261 due to the increased number of elections in even-numbered years.



\$11,972

Minimal increase in Fringe Benefits.

193

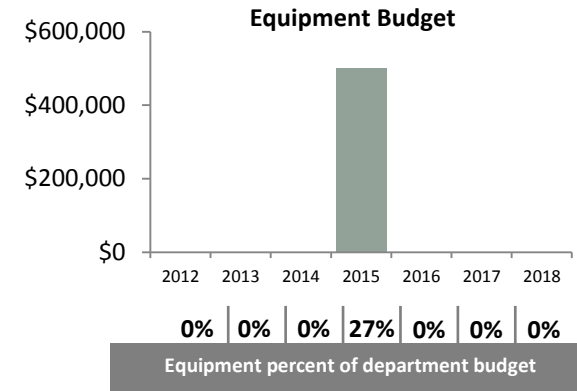
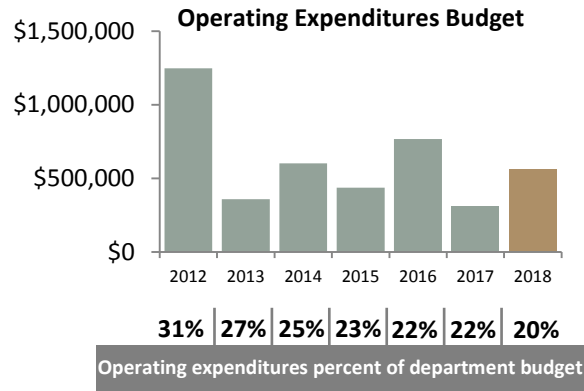
Number of polling locations in Milwaukee.

\$185,000

Funds allocated to expand early voting at 4 additional sites.

320,000

Number of registered voters in the city.



2018 ELECTION DATES AND EXPECTED TURNOUTS

The elections scheduled for 2018 are as follows:

- February 20 Spring Election: Expected turnout of 45,000 ((14%)
- April 3 Spring Election: Expected turnout of 75,000 (24%)

Judicial: State Supreme Court, Court of Appeals and Circuit Court

Local: Referendum Question

- August 14 Fall Primary: Expected turnout of 210,000 (67%)

State: Governor/Lt. Governor, Attorney General, Treasurer, Secretary of State

Legislative: State Senate, State Assembly

County: County Supervisors

Grants

The department receives no grant funding.

Special Purpose Accounts

The department has no special purpose accounts

Capital Requests

There are no proposed capital programs or projects.

State Photo ID Law

With the enactment of the state's photo ID law, the Election Commission undertook a photo ID public information campaign which included:

- Distribution of information flyers through water utility bills, on sanitation carts, at access points to city services (e.g. MP MHD, treasurer's office) and door-to-door through collaboration with community groups such as Safe & Sound, Wisconsin Voice League of Women Voters, etc.
- Attendance at over 70 community-based events, town hall meetings, church groups, etc.
- Widespread media promotion, including television, radio (over 57 media contacts, including Telumundo WI).
- Robo-calls through HACM and several community groups.
- Social media, including the city's website, EC's website, Facebook and Twitter.
- Ensuring community leaders, elected officials and other key holders were disseminating accurate information.
- Promoting the state's "Bring it to the Ballot" website.

Voter Registration Efforts

Prior to the Wisconsin Legislature's January 2016 elimination of the Special Registration Deputy (SRD) program, the department trained and appointed over 1,200 community members to assist with the voter registration process. SRDs often facilitated door-to-door outreach, attended festivals and fairs, and attended events for newly-naturalized citizens. Every library branch had at least two trained SRDs, as did many other service access points in the city.

With the elimination of this program, the Election Commission is now focusing on raising awareness of and access to Wisconsin's new on-line voter registration system (myvote.wi.gov). Promotion of this system will include a mailing to all city households, and media engagement (such as a recent media event related to National Voter Registration Day). Additionally, to address the effects of the "digital divide," whereby many people, particularly seniors and low-income residents, do not have easy access to the internet, the Election Commission is collaborating with a strategic consulting group, the YWCA, League of Women Voters and SE Asian educational Development of WI to produce a webinar that encourages the engagement of non-profits that work with communities in poverty in voter registration and GOTV activities. Finally, the Election Commission will be training City of Milwaukee staff that act as points of entry for residents to access City services on the new MYVote voter registration process and will continue to work closely with non-partisan community and voter advocacy groups that interact regularly with many of Milwaukee's diverse communities.

Early Voting

The number of early voters has grown significantly in recent years.

<u>Year</u>	<u>Early Voters</u>
2000	5,000
2004	10,000
2008	32,000
2012	37,500
2016	52,400

Efforts to increase “early voting” have been undertaken by the department and have included the expansion of early voting sites from 1 to 3 in 2016, with an additional expansion to 5 sites proposed in the 2018 Budget. Using registration activity during early voting as an indicator, the department estimates that 3% of the city’s total voters were early voters that may not have otherwise cast ballots in the election without access to early voting.

The department believes that an additional expansion of sites will increase this percentage to one that is at or above national averages, but will also contain cost. It is important to note that Wisconsin currently requires “early” voters to cast in-person absentee ballots, which is *exceptionally* costly to the City (in terms of administering the actual voting process and in the processing of these ballots on Election Day). The City of Milwaukee has supported a proposal to the Wisconsin Legislature to allow for the use of tabulators during early voting versus ballots going into absentee envelopes.

2018 Initiatives and Programs

The department plans to undertake the following new and expanded initiatives and programs:

- Continued public education efforts related to the state’s photo ID requirement and voter registration.
- Expanded In-Person Absentee “Early” Voting (IPAV).
- Reduced wait time at polling places through the implementation of process improvement plans.
- Working with the Wisconsin Elections Commission to explore the feasibility of electronic poll books.
- Advocating with the Wisconsin Elections Commission and the Wisconsin Legislature for the use of voting tabulators (voting machines) during IPAV.