

# Historic Preservation Commission Meeting November 7, 2011



- Good Afternoon!  
Please sign in at the door
- If you wish to speak on an issue or have your opinion noted by the commission, please fill out a form at the door and hand it to us



— *M*ILWAUKEE —

**HISTORIC  
PRESERVATION  
COMMISSION**

---

LIVING WITH HISTORY

2134 N. Terrace

*Addition*

**North Point North Historic  
District**







Addition here



South elevation

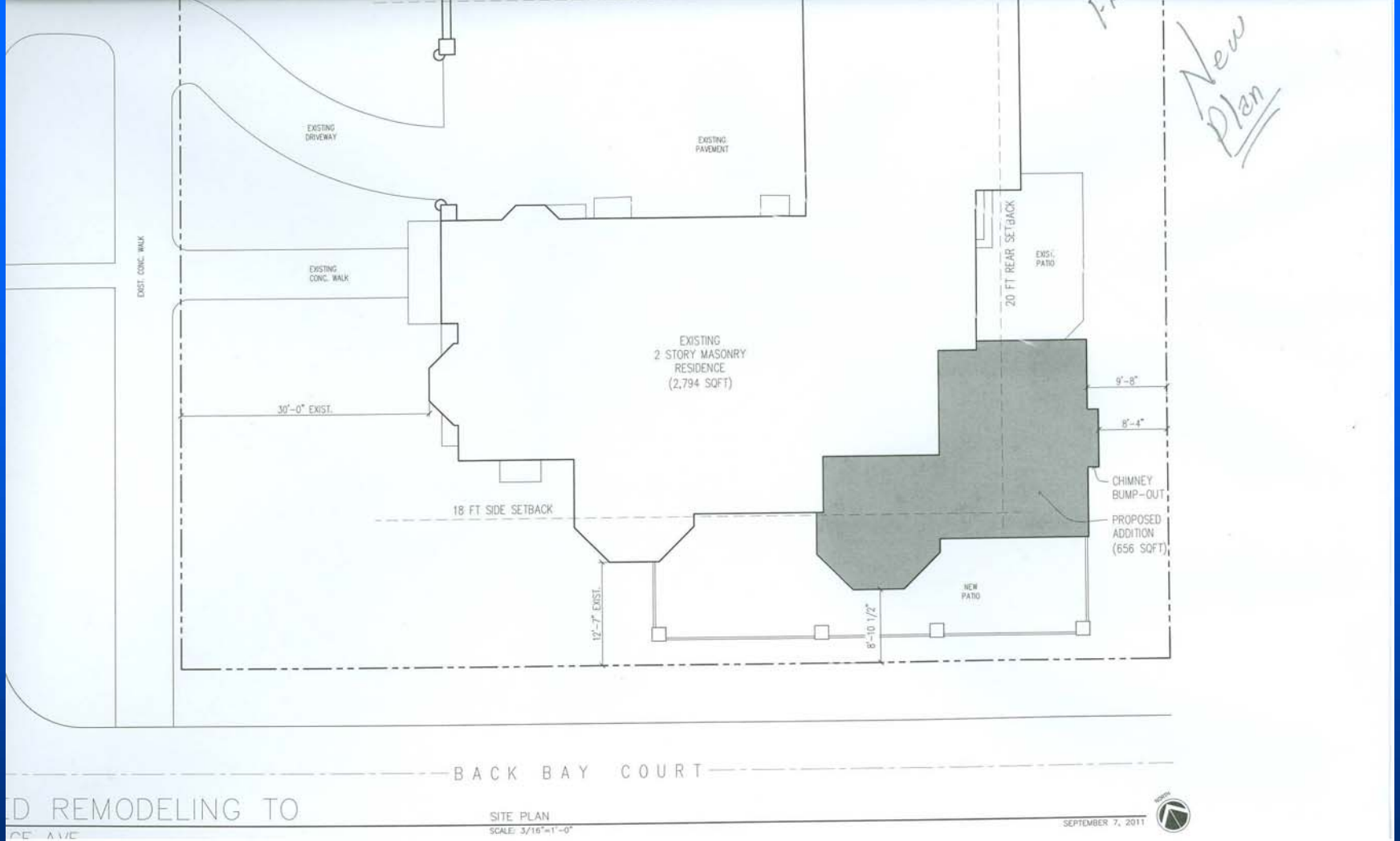




312  
312  
312







Addition plan

North





SCALE: 3/16"=1'-0"



# South Elevation with addition



East Elevation showing addition



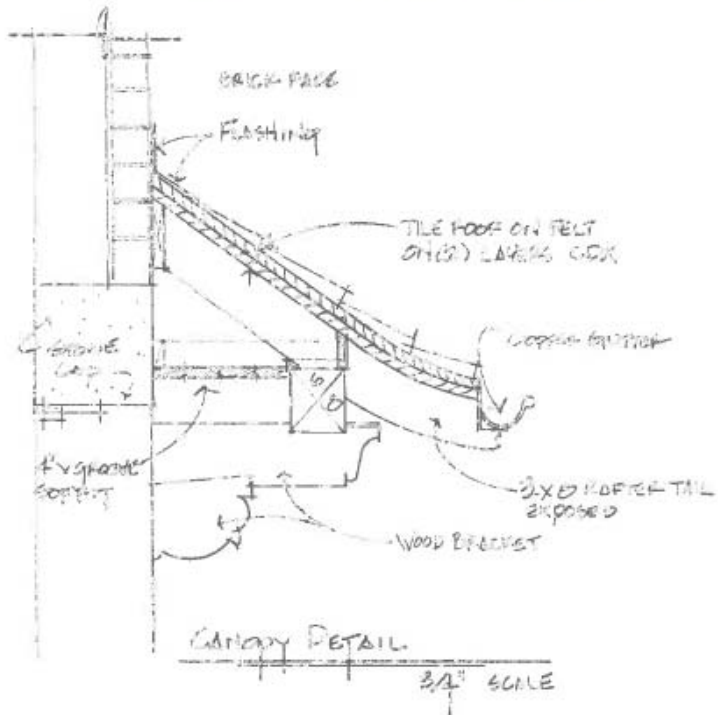


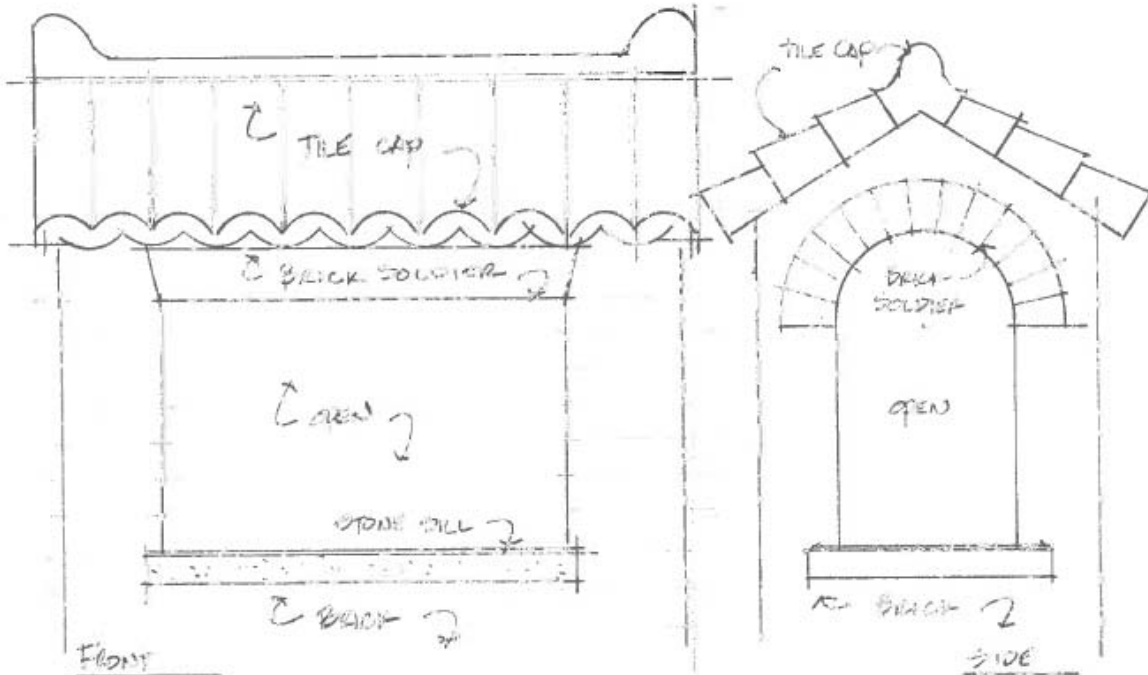
**2134 N. Terrace**



**2134 N. Terrace**







CHIMNEY CAP DETAIL



