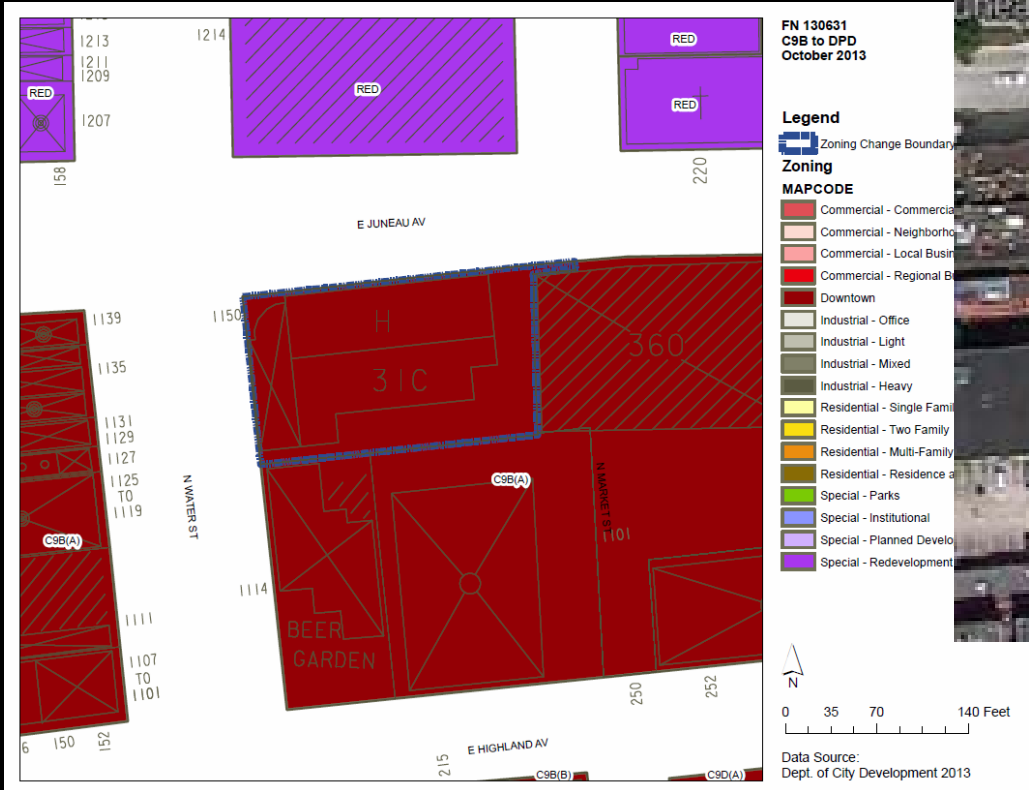
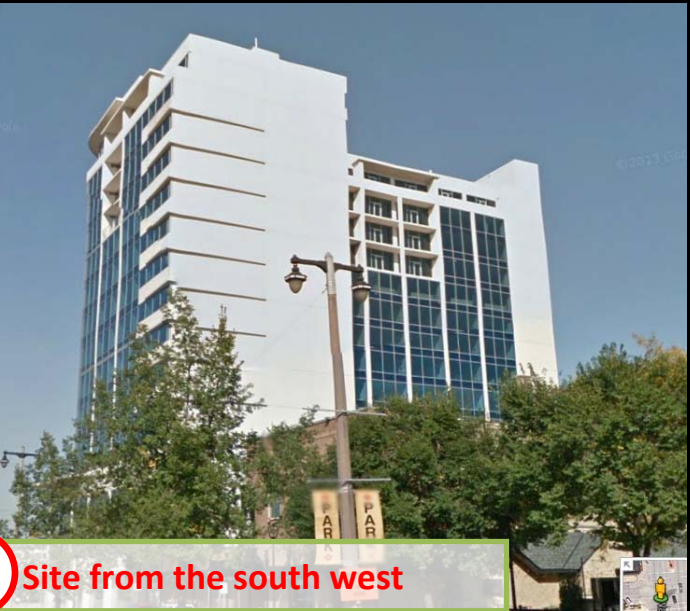


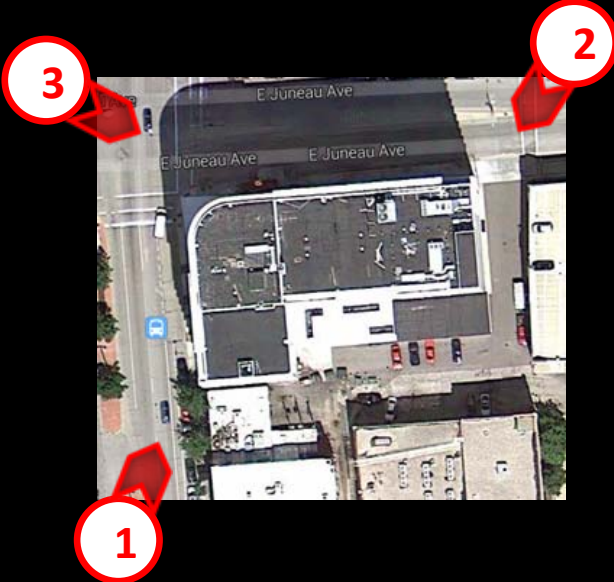
File No. 130631. A substitute ordinance relating to the change in zoning from Downtown Residential and Specialty Use to a Detailed Planned Development known as 1150 North Water Street, for a mixed-use development, on land located on the east side of North Water Street, south of East Juneau Avenue, in the **4th Aldermanic District**. This zoning change was requested by Milwaukee Hotel Acquisition, LLC, on behalf of the Milwaukee School of Engineering (MSOE), so that MSOE may acquire the property for its intended use. The existing building at 1150 North Water Street will be redeveloped into a multi-purpose building with commercial, dormitory and faculty housing, and ancillary uses.



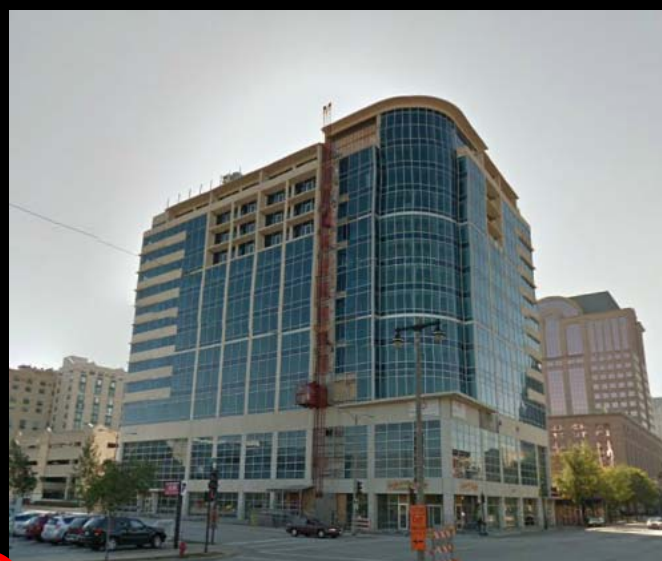
Context Photos



1 Site from the south west



2 Site from the north east



3 Site from the north west

Context Photos



View to the north from Juneau Ave.



View to the south west from Water St.

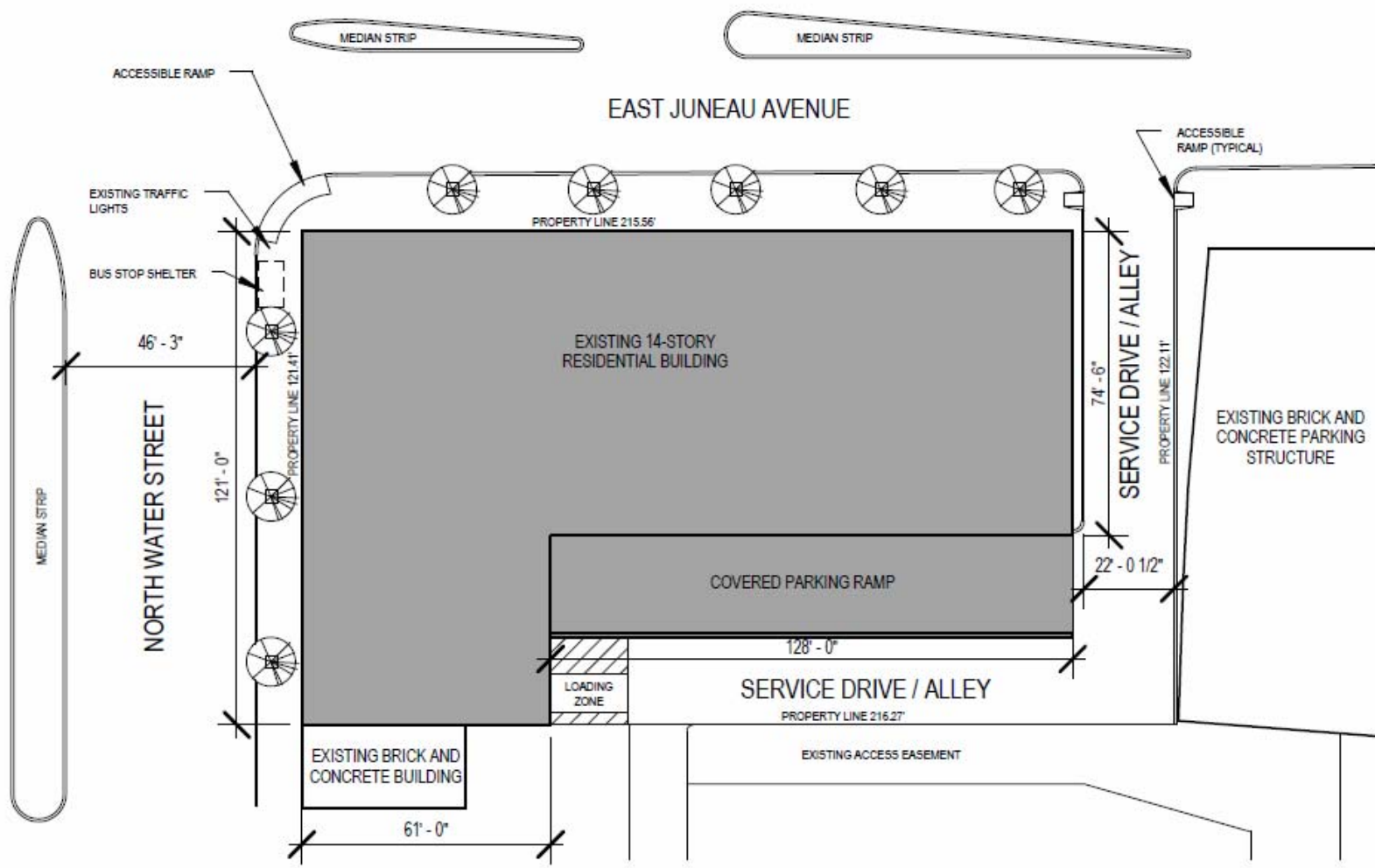


View to the east from Juneau Ave.



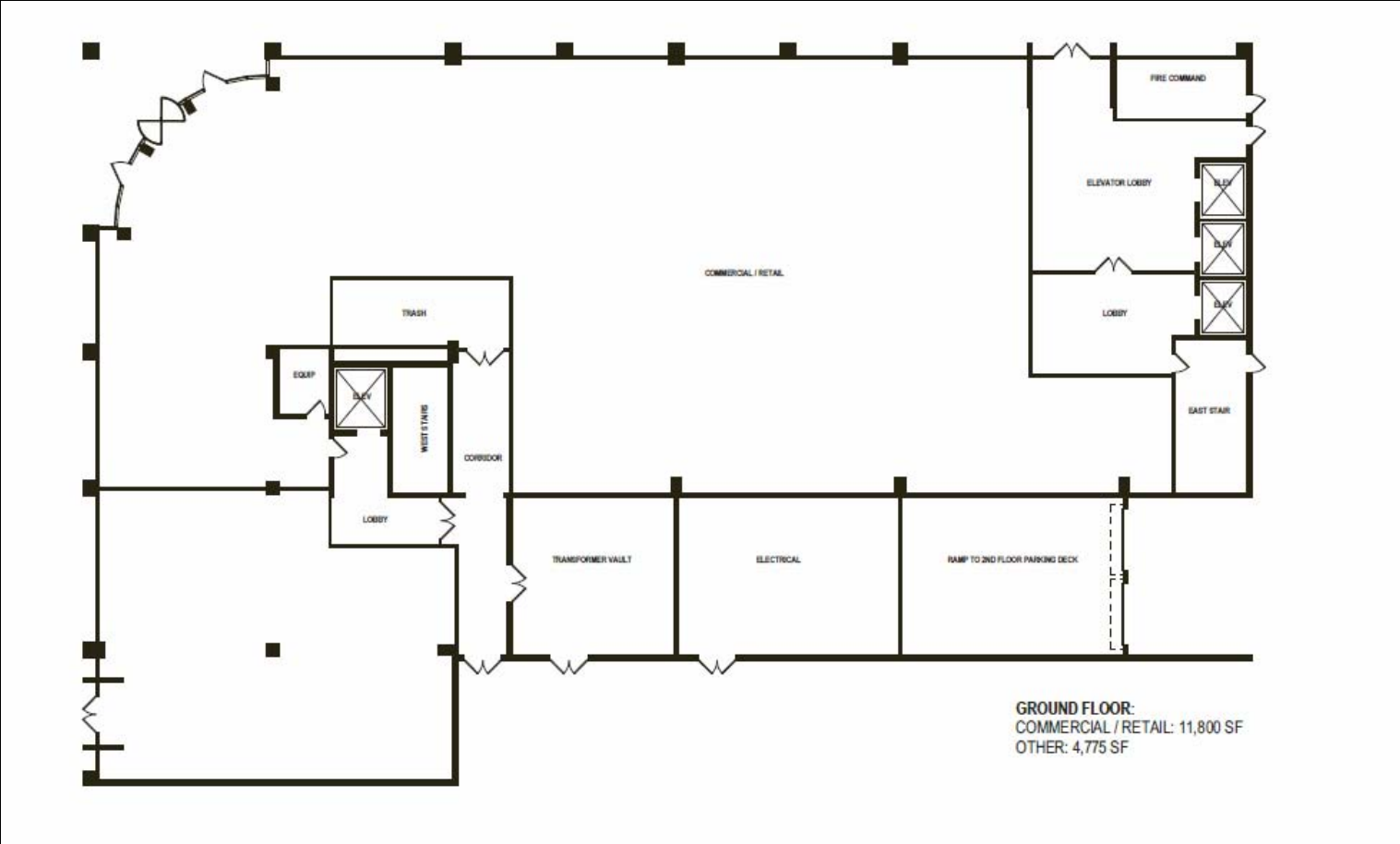
View to the south from Water St.

Site Plan

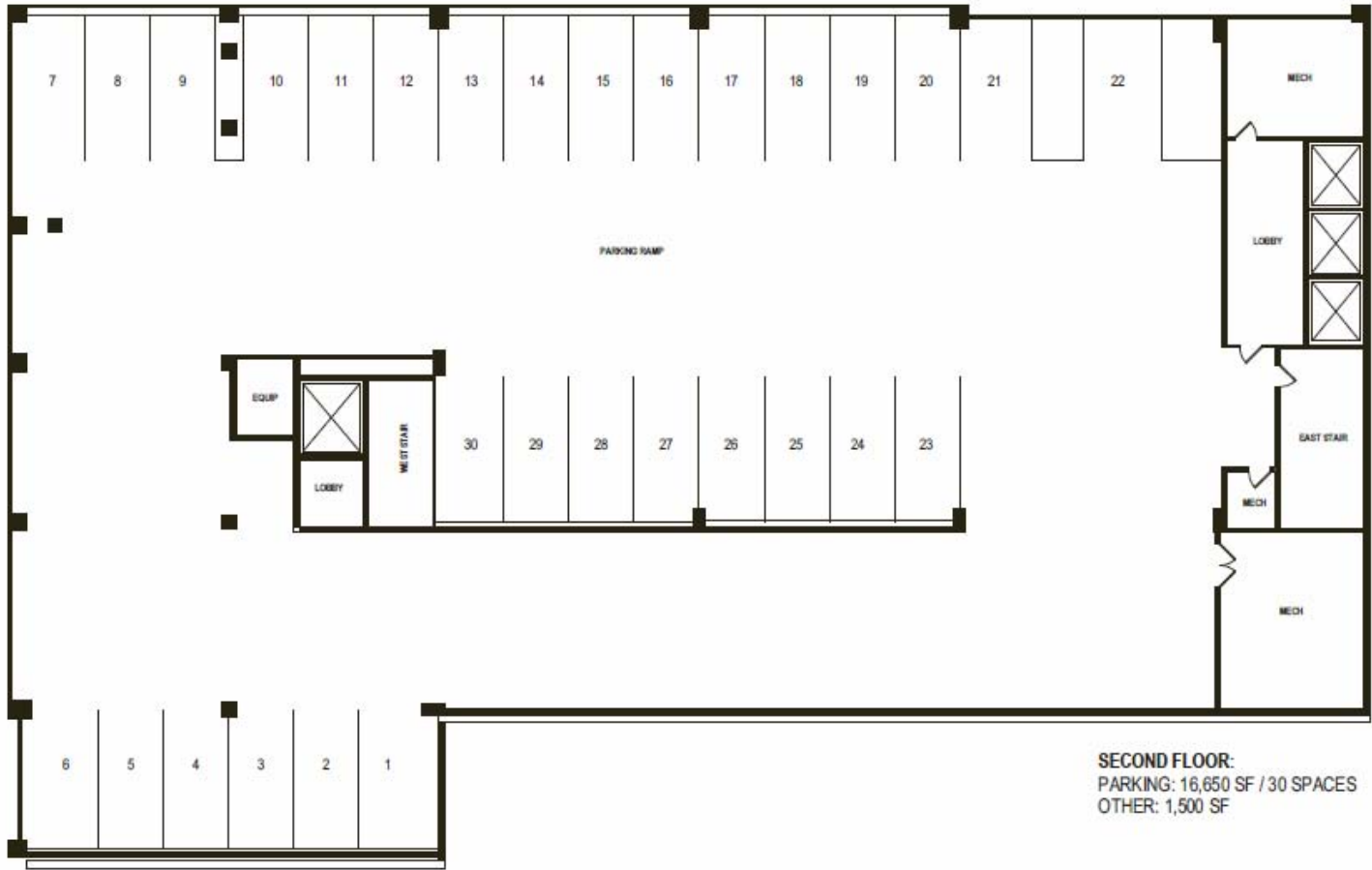


1 SITE PLAN
1" = 50'-0"

First floor plan

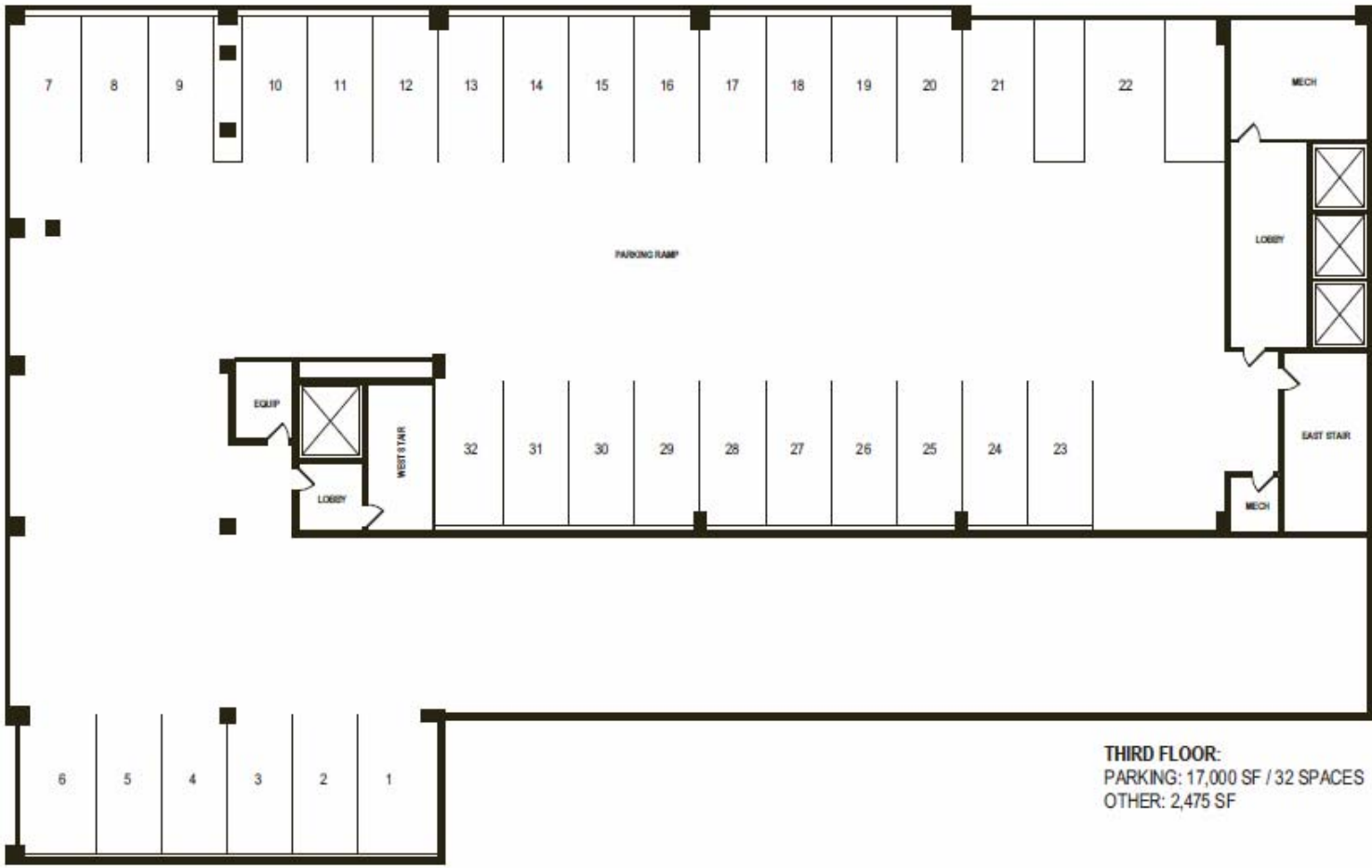


Second floor plan



SECOND FLOOR:
PARKING: 16,650 SF / 30 SPACES
OTHER: 1,500 SF

Third floor plan



THIRD FLOOR:
PARKING: 17,000 SF / 32 SPACES
OTHER: 2,475 SF

Fourth floor plan



FOURTH FLOOR:
 RESIDENT COMMON SPACE: 5,950 SF
 RESIDENTIAL: 3,675
 OTHER: 7,150 SF

5th - 10th floor plan



FIFTH FLOOR:
RESIDENTIAL: 12,025 SF
OTHER: 2,950 SF

11th-13th floor plan



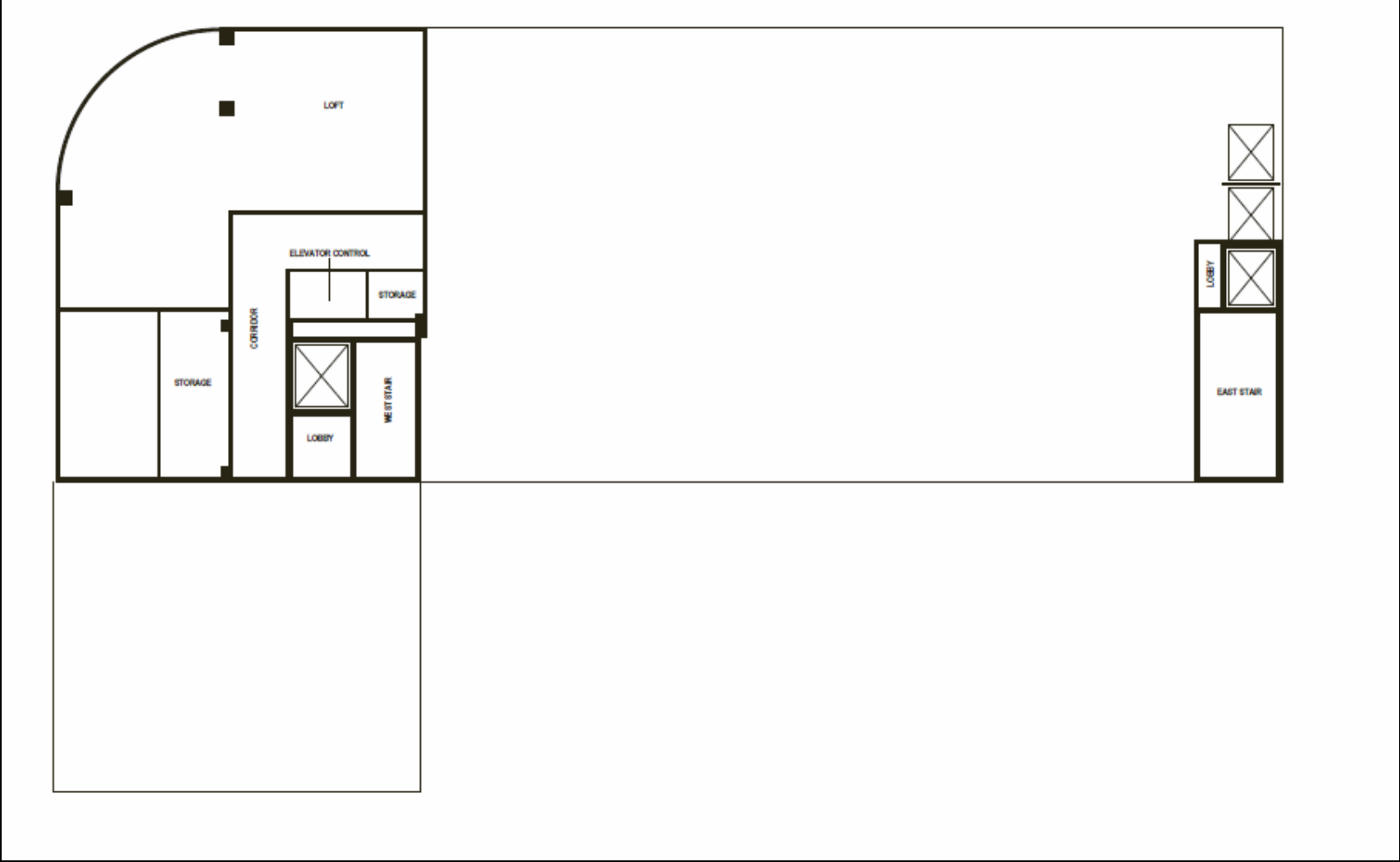
ELEVENTH FLOOR:
RESIDENTIAL: 11,325 SF
OTHER: 2,850 SF

14th floor plan

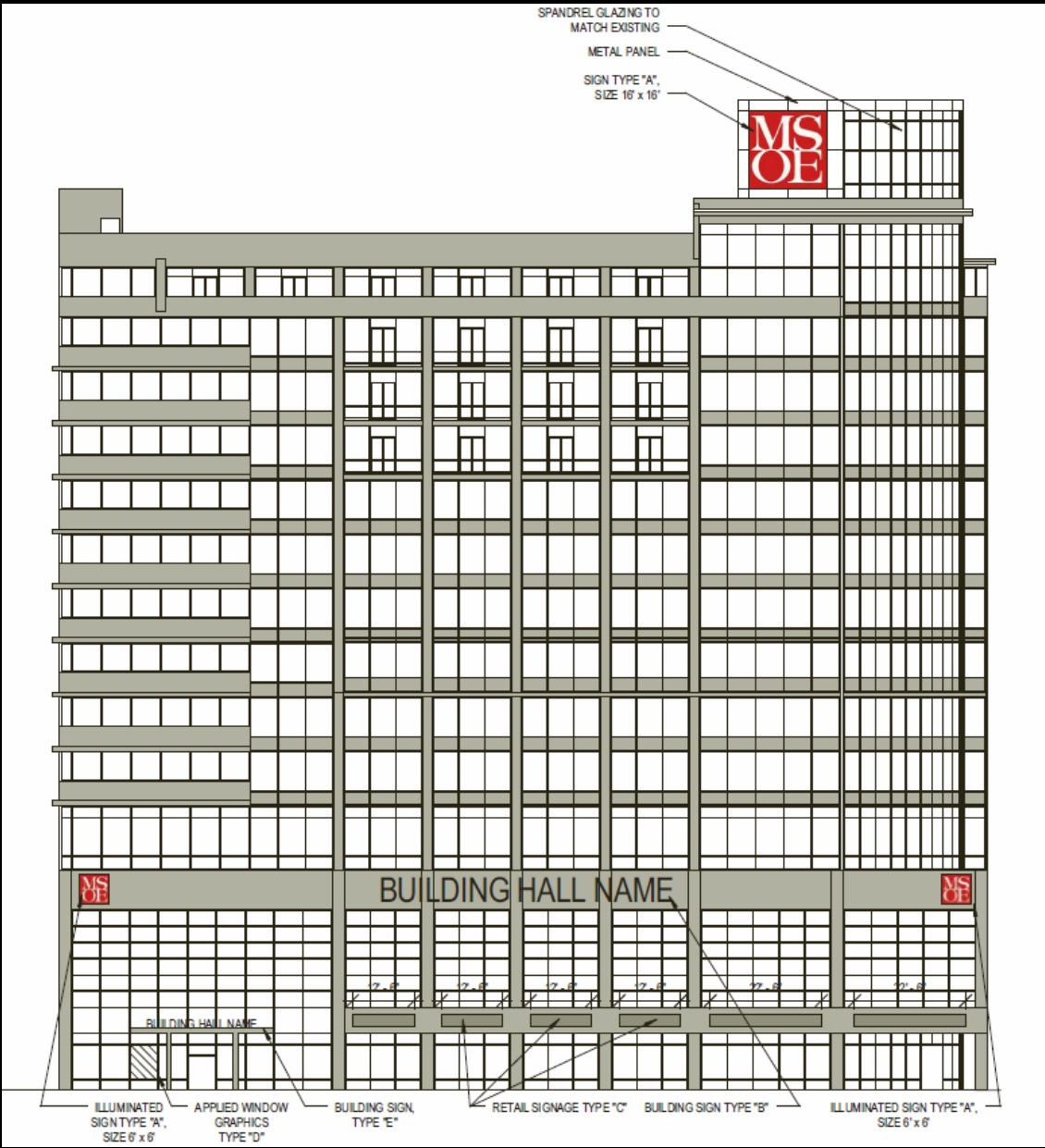


FOURTEENTH FLOOR:
RESIDENTIAL: 9,125 SF
OTHER: 2,725 SF

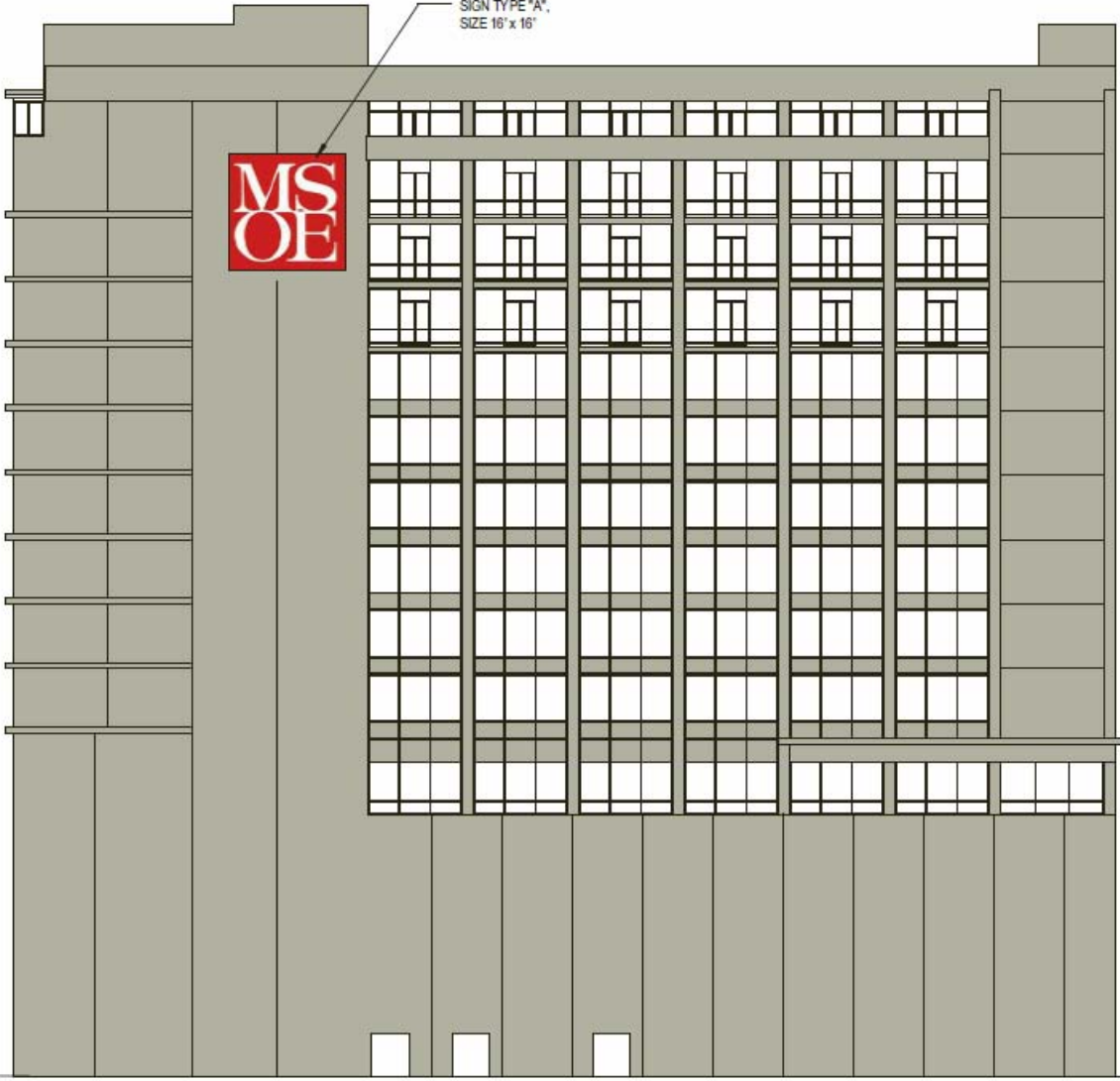
Roof plan



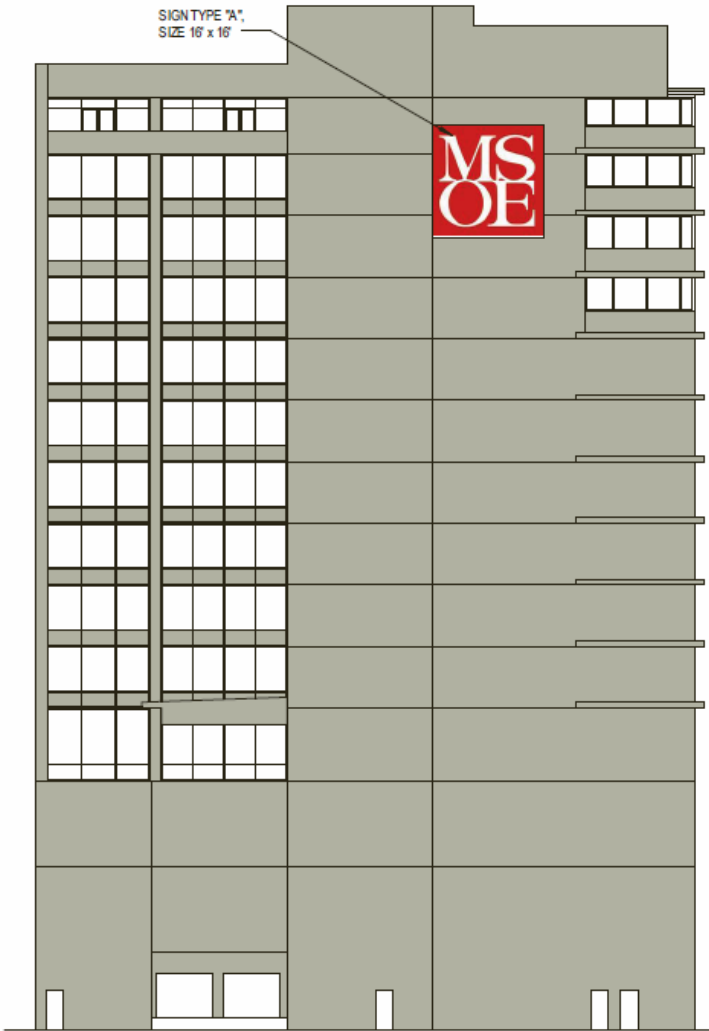
North Elevation
Juneau Avenue



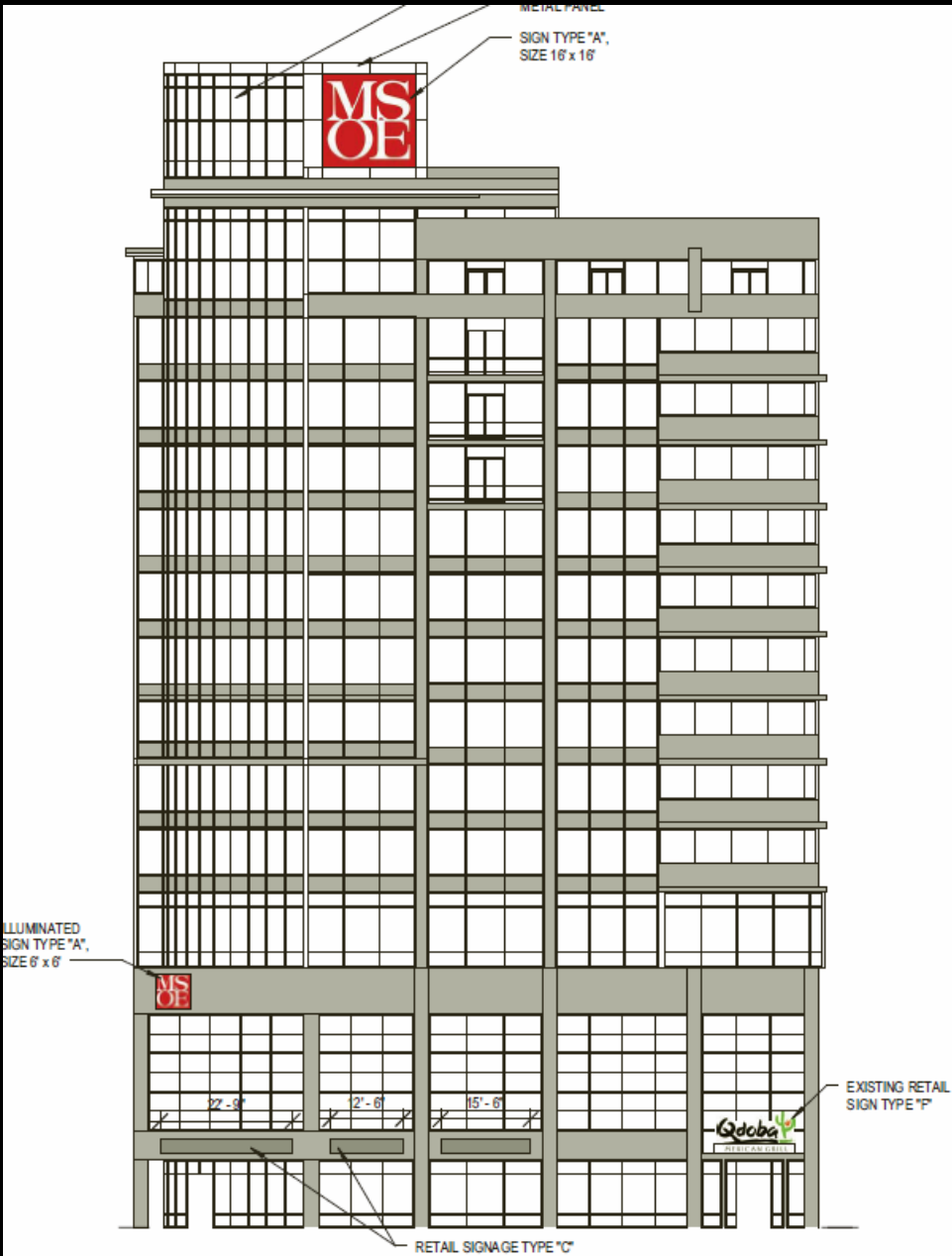
South Elevation



East and West Elevations

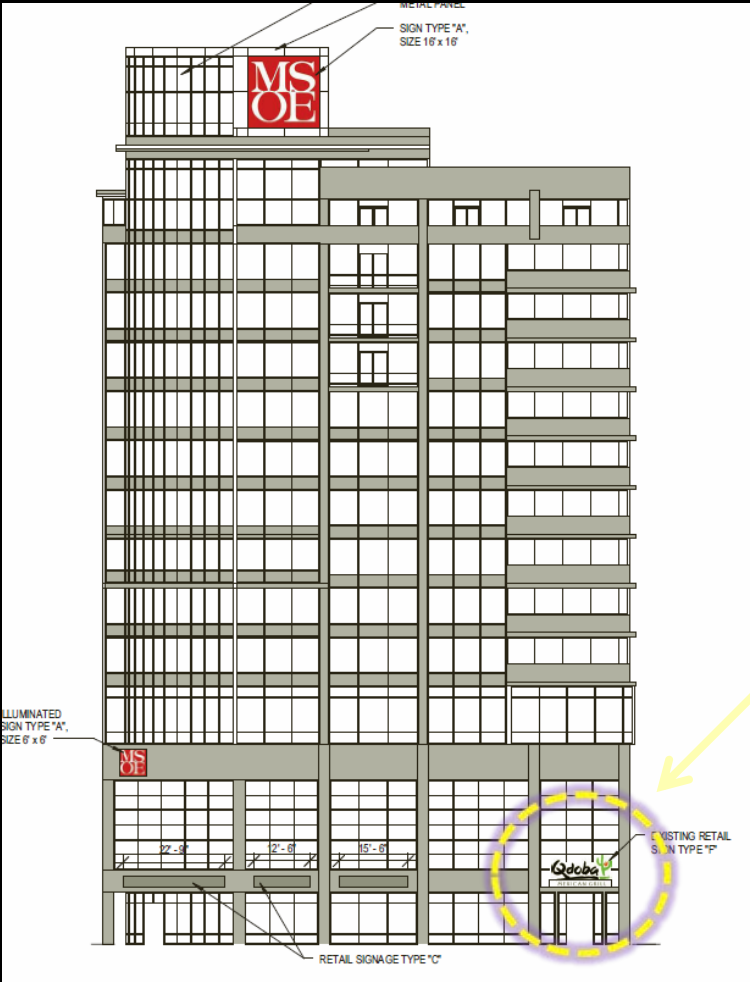


East elevation



West (Water Street) elevation

Signage



EXISTING ILLUMINATED LETTER AND LOGO SIGN

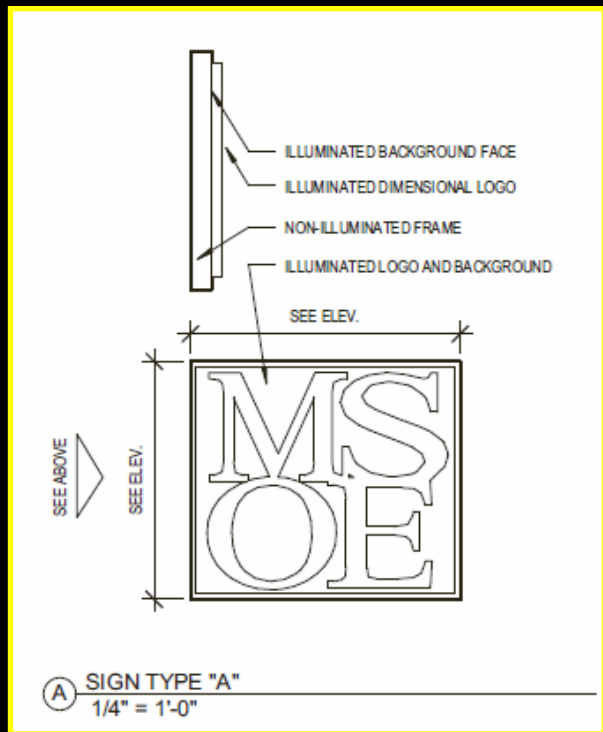
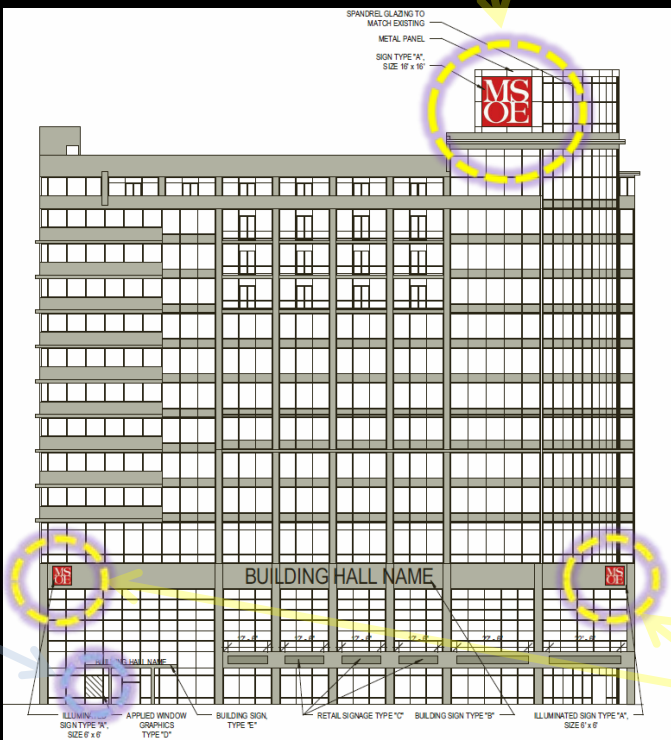
Qdoba
MEXICAN GRILL

ⓕ SIGN TYPE "F"
1/4" = 1'-0"

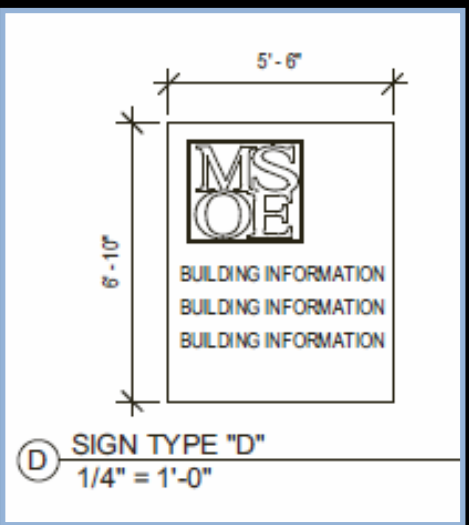
West elevation

Signage

Size 16' x 16'



Size 6'-10" x 5'-6"



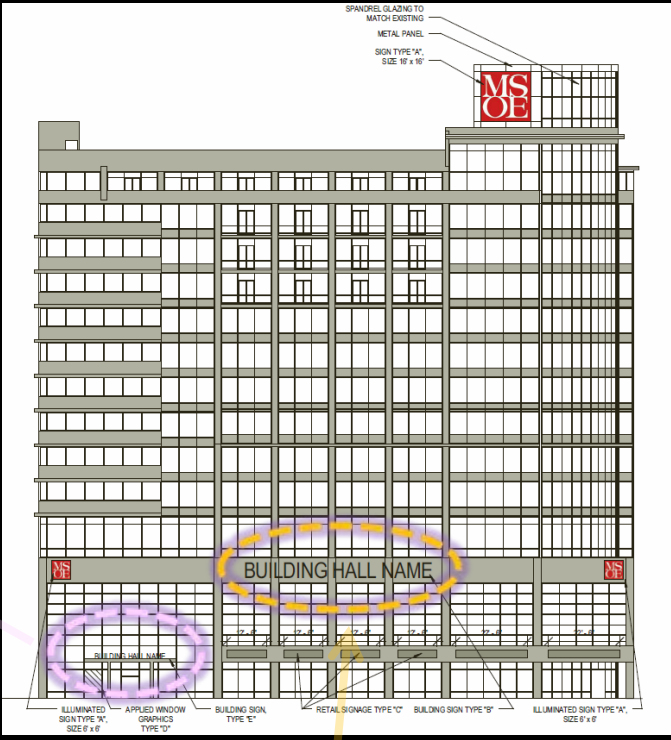
North elevation

Size 6' x 6'

Signage



1' – 9" High

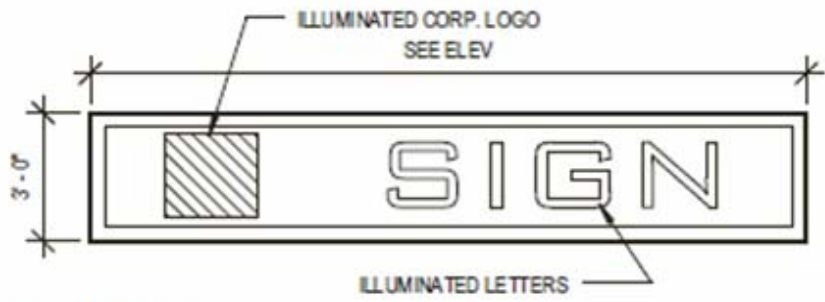
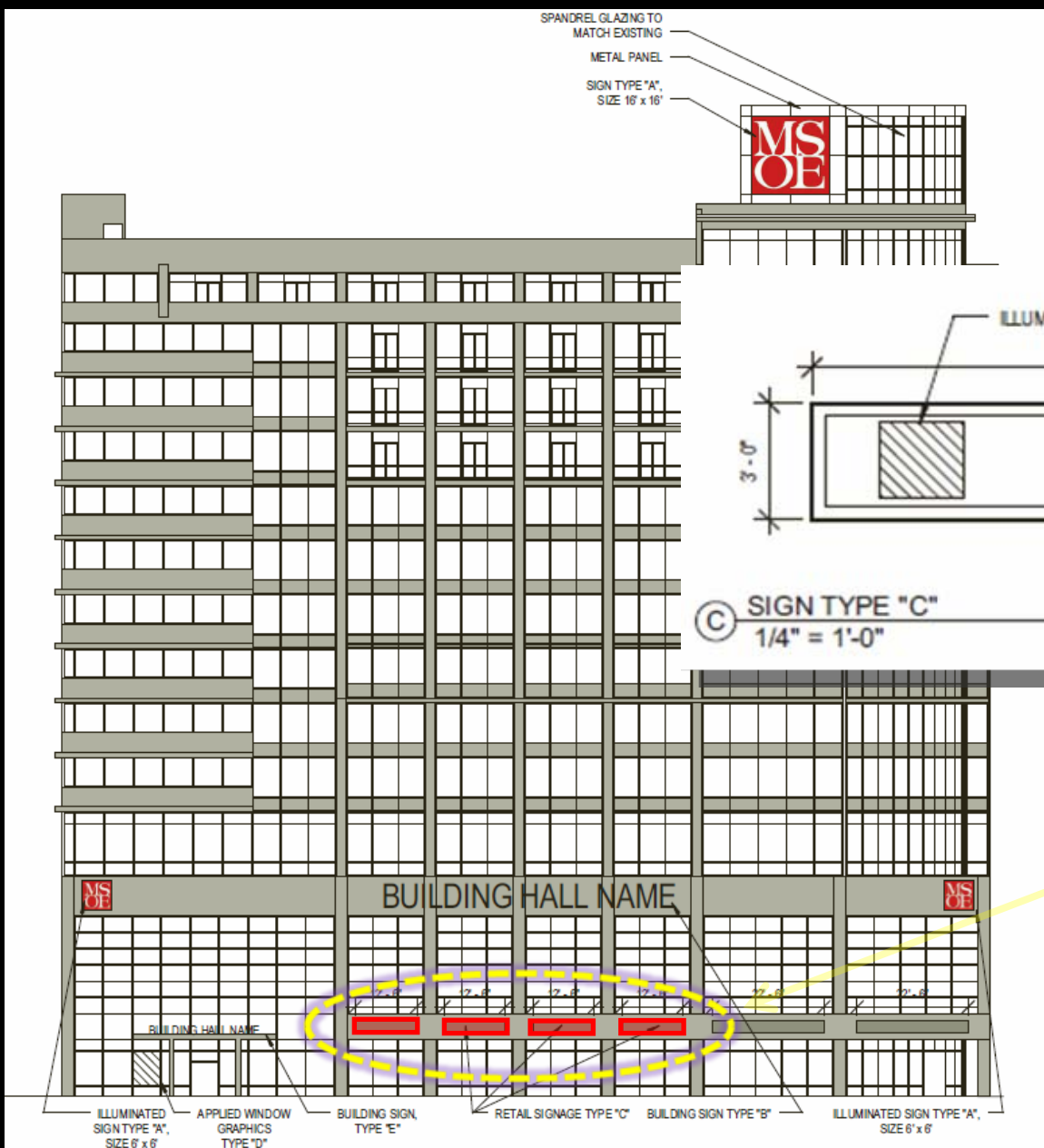


North elevation



– 6" High

Signage



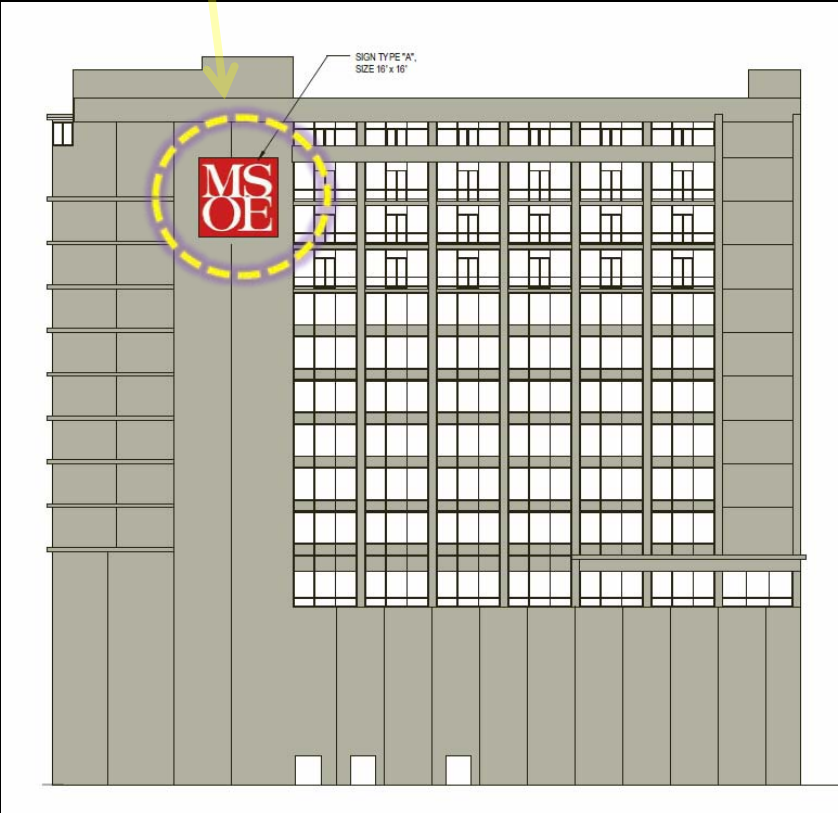
© SIGN TYPE "C"
1/4" = 1'-0"

3' High (4 separate signs)

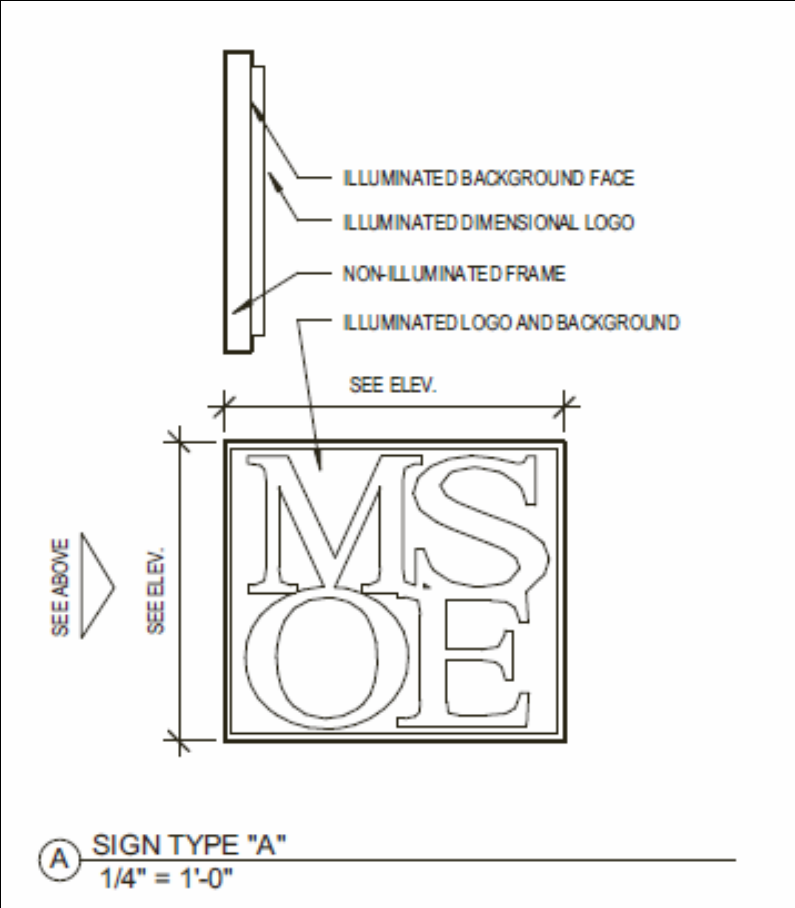
North elevation

Signage

Size 16' x 16'

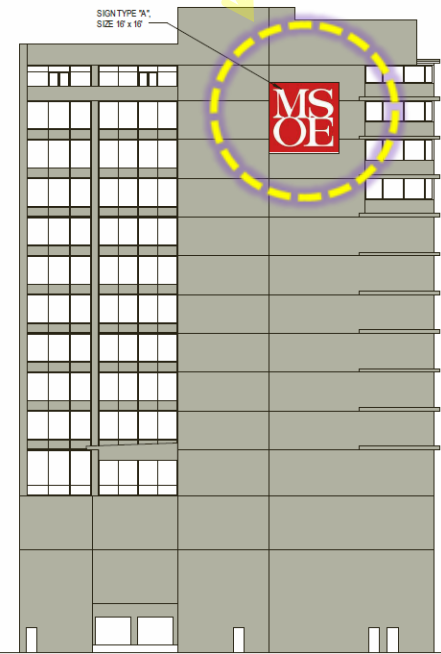


South elevation

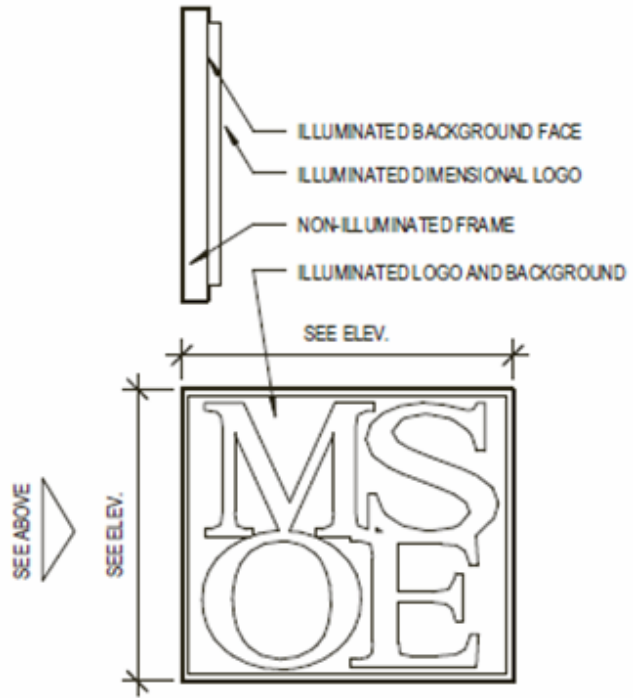


Signage

Size 16' x 16'

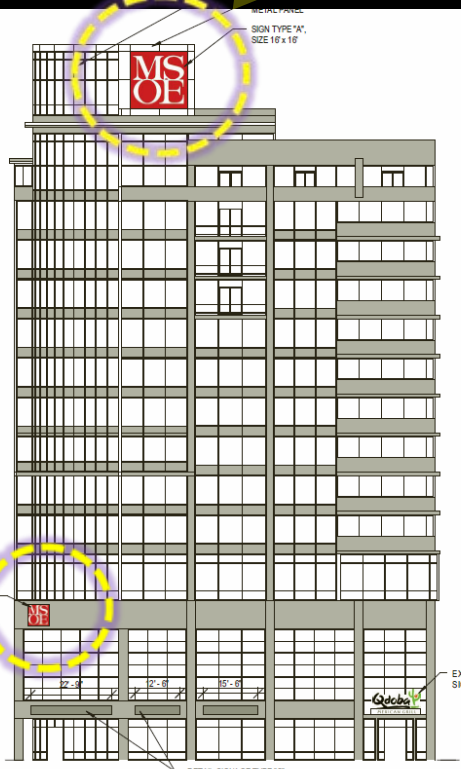


East elevation



(A) SIGN TYPE "A"
1/4" = 1'-0"

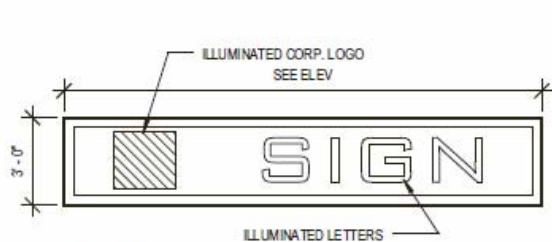
Size 16' x 16'



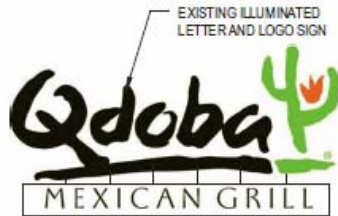
Size 6' x 6'

West elevation

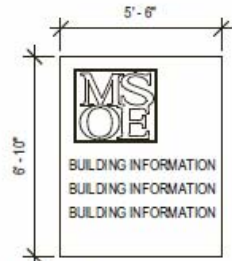
Signage



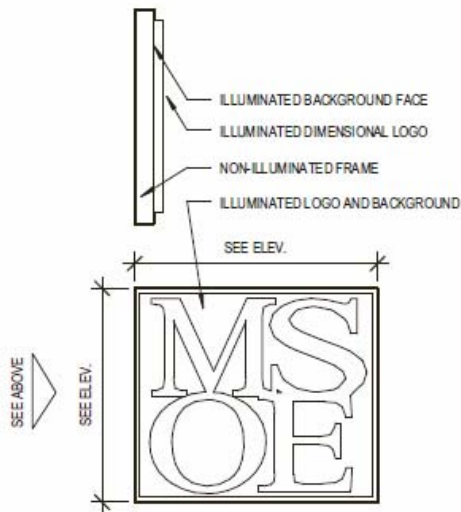
(C) SIGN TYPE "C"
1/4" = 1'-0"



(F) SIGN TYPE "F"
1/4" = 1'-0"



(D) SIGN TYPE "D"
1/4" = 1'-0"



(A) SIGN TYPE "A"
1/4" = 1'-0"



(B) SIGN TYPE "B"
1" = 30'-0"



(E) SIGN TYPE "E"
1" = 30'-0"