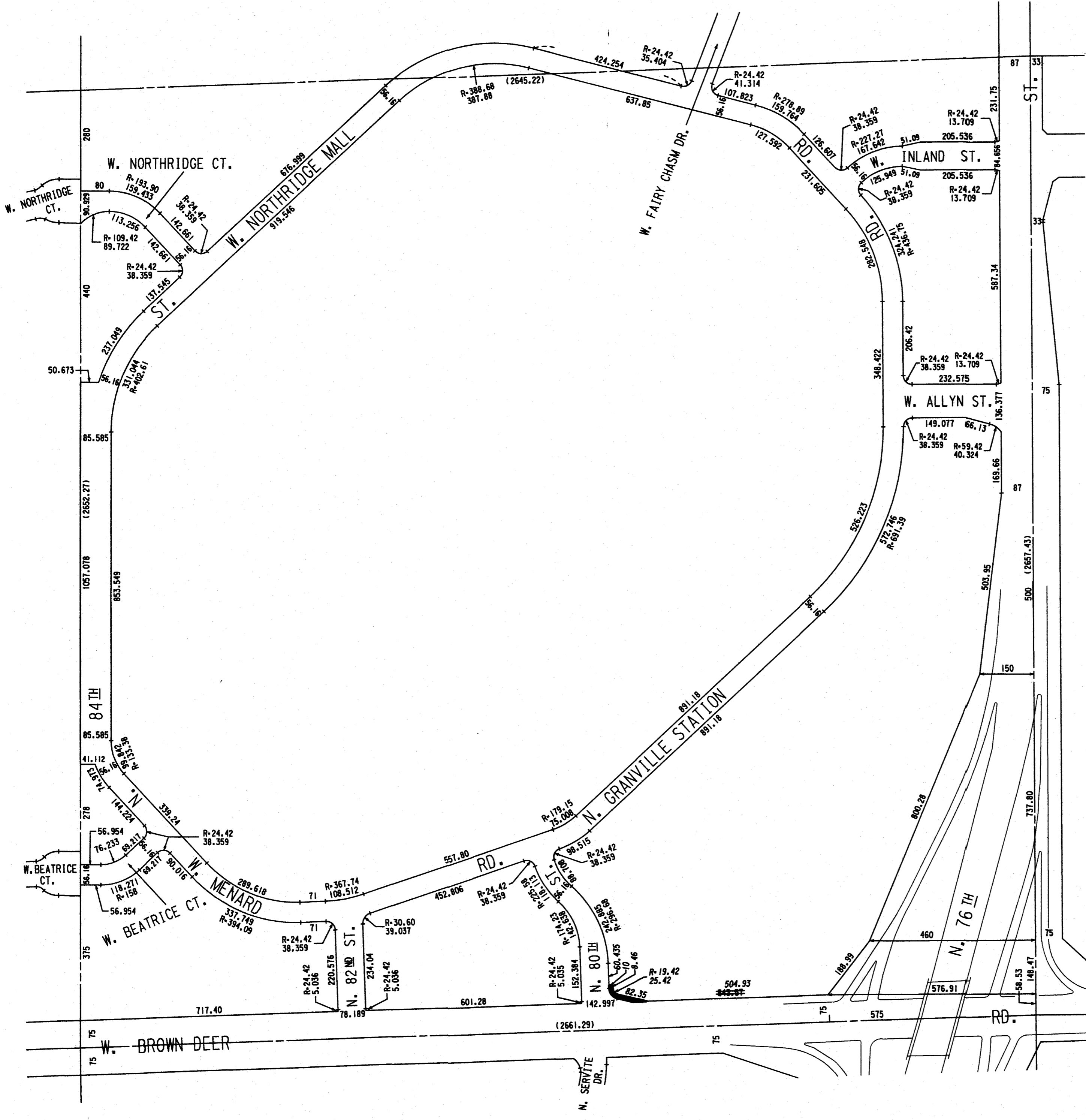
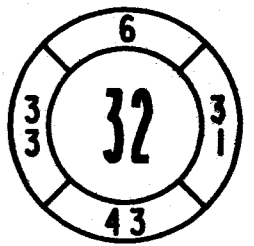


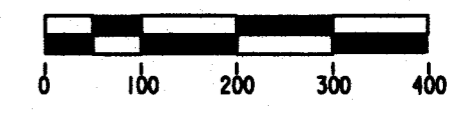
S. E. 1/4 SEC. 4, T. 8 N., R. 21 E.



OFFICIAL MAP



COMPILED AND DRAWN BY
INFRASTRUCTURE SERVICES
 CITY OF MILWAUKEE,
 WISCONSIN



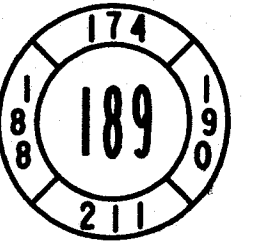
LEGEND

- SECTION LINE _____
- 1/4 SECTION LINE _____
- EXISTING STREET AND ALLEY LINES _____
- PROPOSED STREET AND ALLEY LINES _____
- RAILROAD RIGHT-OF-WAY LINES _____
- RIGHT-OF-WAY EASEMENT LINES _____
- R.O.W. JURISDICTIONAL LIMITS _____
- MILWAUKEE CITY LIMITS _____
- PROPOSED R.O.W. AMENDMENTS (ADDITION)

DATE: 1/17/23
 APPROVED: *[Signature]* CITY ENGINEER

SEC. 113-32	DRAWN	
	6-23-67	J.L.Z.
.0001 .0118	REVISED	
	3-4-1969 3-3-2020	KAM WEF

N.E. 1/4 SEC. 34, T. 8 N., R. 21 E.



OFFICIAL MAP



COMPILED AND DRAWN BY
INFRASTRUCTURE SERVICES
CITY OF MILWAUKEE,
WISCONSIN



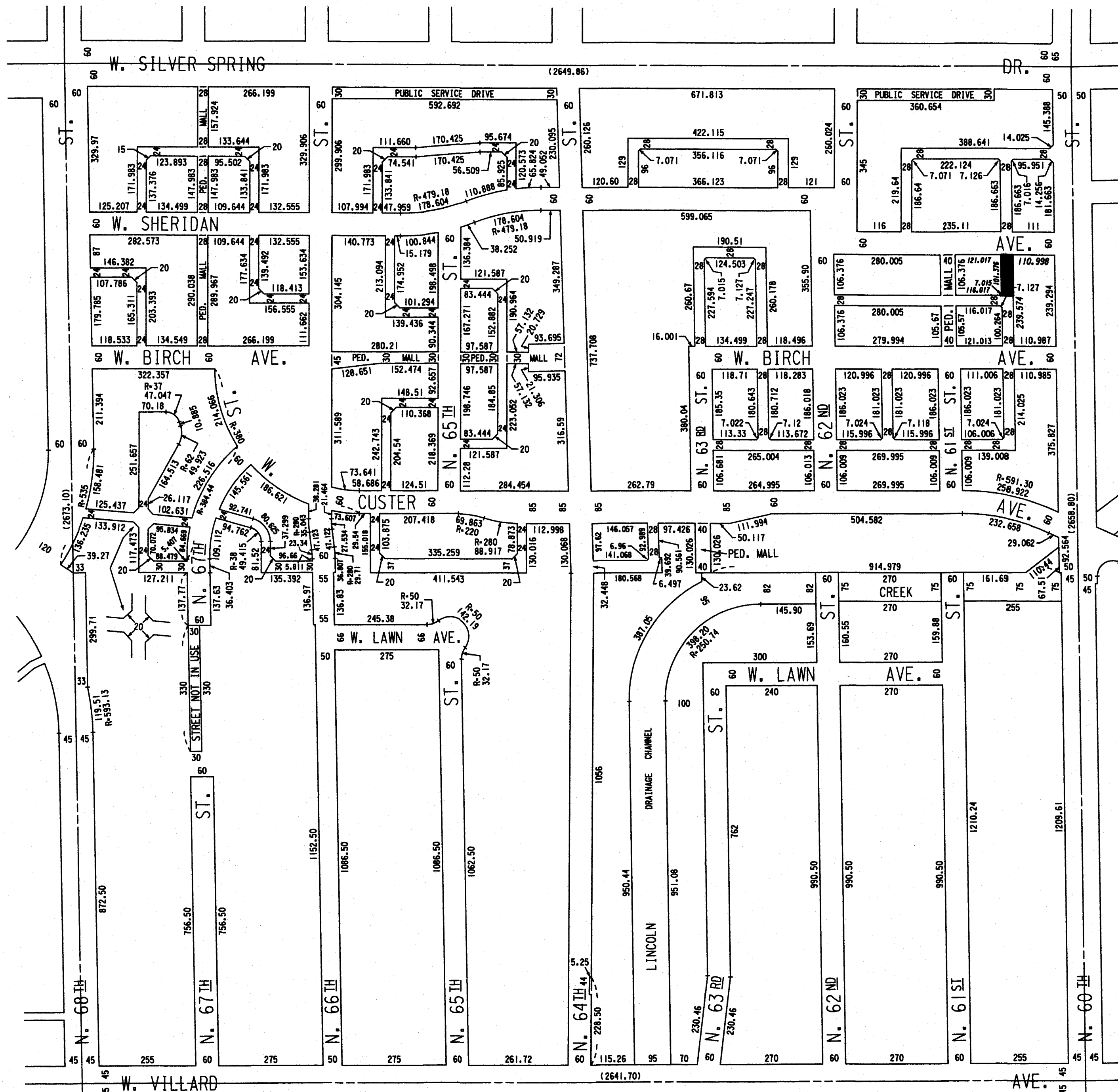
LEGEND

- SECTION LINE ————
- 1/4 SECTION LINE - - - - -
- EXISTING STREET AND ALLEY LINES ————
- PROPOSED STREET AND ALLEY LINES - - - - -
- RAILROAD RIGHT-OF-WAY LINES ————
- RIGHT-OF-WAY EASEMENT LINES - - - - -
- R.O.W. JURISDICTIONAL LIMITS
- MILWAUKEE CITY LIMITS - - - - -

■ PROPOSED R.O.W. AMENDMENTS (ADDITION)

DATE: 1/17/23
APPROVED: *[Signature]*
CITY ENGINEER

SEC. 113-32	DRAWN	E.F.A.
	6-23-67	
	REVISED	
.0022	1-16-1973	JDW
.0112	7-2-2013	WEF
.0116	5-30-2018	WEF
.0118	3-3-2020	WEF
.0119	3-23-2021	WEF



N.E. 1/4 SEC. 12, T. 7 N., R. 22 E.

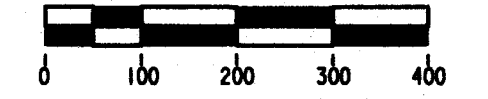
246
269
270
286



OFFICIAL MAP



COMPILED AND DRAWN BY
INFRASTRUCTURE SERVICES
CITY OF MILWAUKEE,
WISCONSIN



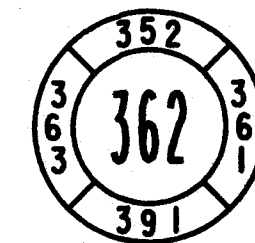
LEGEND

- SECTION LINE ————
- 1/4 SECTION LINE - - - -
- EXISTING STREET AND ALLEY LINES ————
- PROPOSED STREET AND ALLEY LINES - - - -
- RAILROAD RIGHT-OF-WAY LINES ————
- RIGHT-OF-WAY EASEMENT LINES - - - -
- R.O.W. JURISDICTIONAL LIMITS
- MILWAUKEE CITY LIMITS - - - -
- PROPOSED R.O.W. AMENDMENTS (VACATION)

DATE: 1/17/16
APPROVED: CITY ENGINEER

SEC. 113-32	DRAWN	
	6-23-67	E.F.A.
	REVISED	
.0059	10-27-1981	MCW
.0114	1-19-2016	WEF

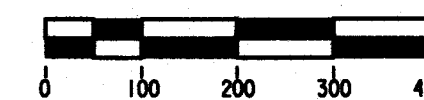
S.W. 1/4 SEC. 20, T. 7 N., R. 22 E.



OFFICIAL MAP



COMPILED AND DRAWN BY
INFRASTRUCTURE SERVICES
CITY OF MILWAUKEE,
WISCONSIN



LEGEND

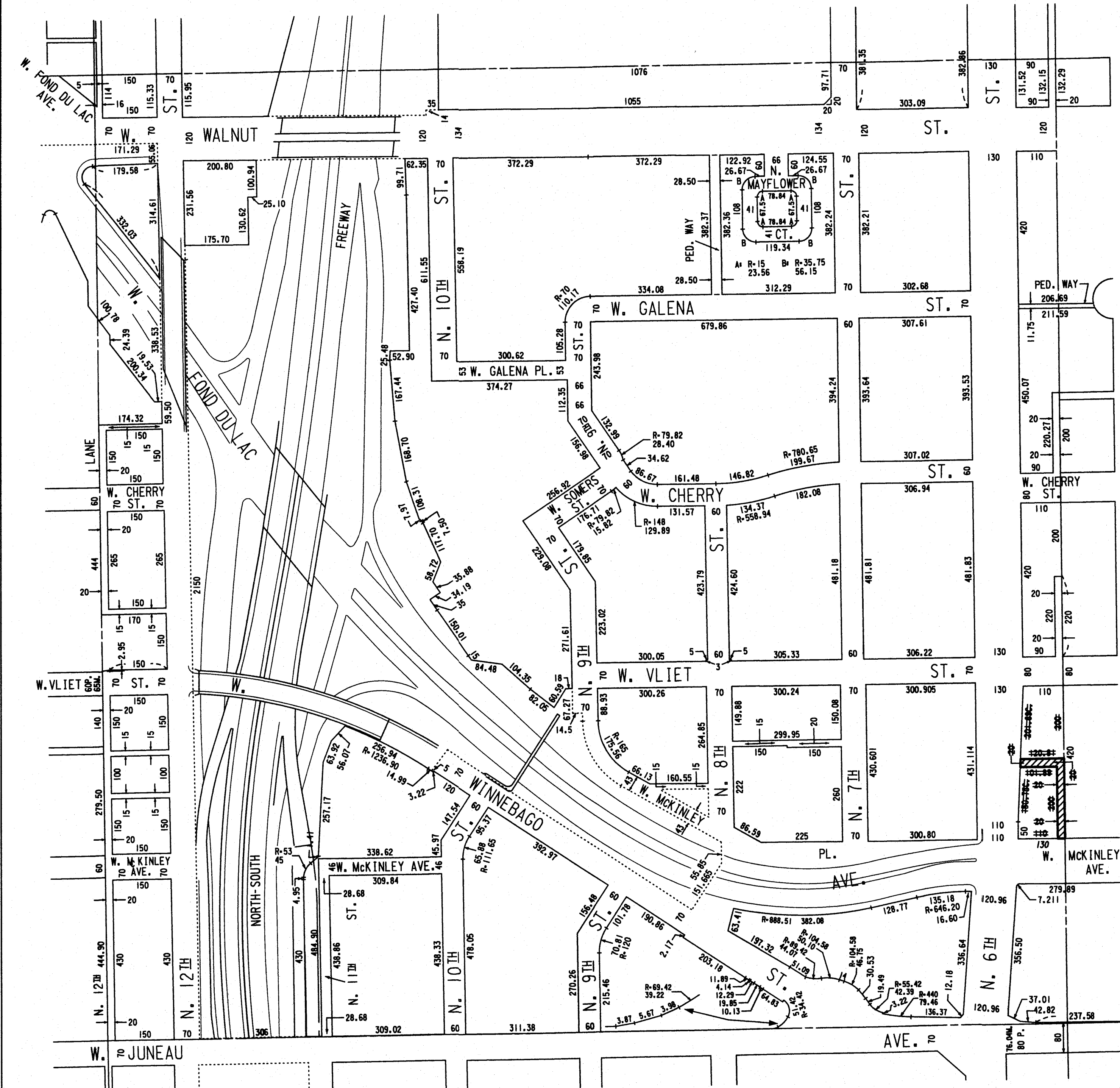
- SECTION LINE _____
- 1/4 SECTION LINE _____
- EXISTING STREET AND ALLEY LINES _____
- PROPOSED STREET AND ALLEY LINES _____
- RAILROAD RIGHT-OF-WAY LINES _____
- RIGHT-OF-WAY _____
- EASEMENT LINES _____
- R.O.W. JURISDICTIONAL LIMITS _____
- MILWAUKEE CITY LIMITS _____

PROPOSED R.O.W. AMENDMENTS (VACATION)

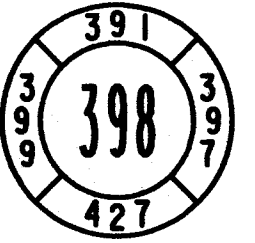
DATE: 1/17/23
APPROVED: CITY ENGINEER

SEC. 113-32	REVISED	SEC. 113-32	DRAWN
.0086	12-18-1992 WEF		6-23-67 E.F.A.
.0087	5-25-1993 WEF		
.0090	11-29-1994 WEF		REVISED
.0094	9-24-1996 WEF	.0011	12-3-1970 TLK
.0105	4-13-2004 WEF	.0016	12-28-1971 JDW
.0107	5-31-2006 WEF	.0024	6-12-1973 DJM
.0108	5-30-2007 WEF	.0033	7-15-1975 DJM
.0109	4-9-2008 WEF	.0043	2-7-1978 JGP
.0110	5-27-2009 WEF	.0044	5-2-1978 MCW
.0113	3-31-2015 WEF	.0050	2-6-1979 MCW
.0115	3-28-2017 WEF	.0059	10-27-1981 MCW
.0116	5-30-2018 WEF	.0060	6-29-1982 MCW
.0118	3-3-2020 WEF	.0061	1-5-1983 MCW
.0120	4-28-2022 WEF	.0063	3-2-1984 MCW
		.0065	12-21-1984 MCW
		.0068	3-25-1986 MCW
		.0070	6-16-1987 MCW
		.0072	1-26-1988 AA
		.0077	12-19-1989 WEF
		.0085	11-20-1992 WEF

UPDATED 4-28-2022



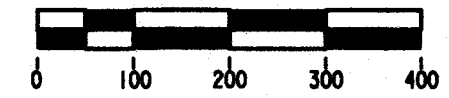
S.W. 1/4 SEC. 29, T. 7 N., R. 22 E.



OFFICIAL MAP



COMPILED AND DRAWN BY
INFRASTRUCTURE SERVICES
CITY OF MILWAUKEE,
WISCONSIN



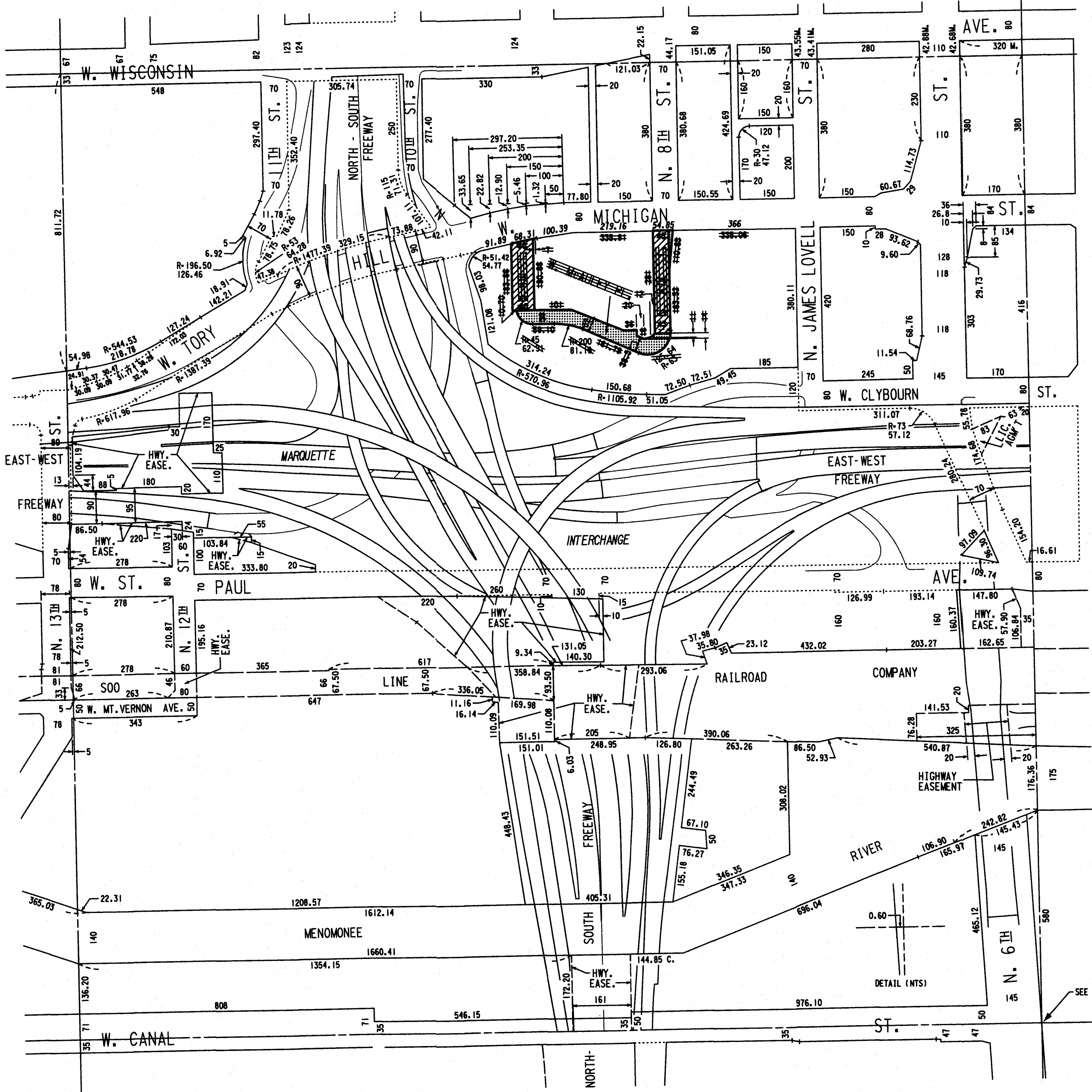
LEGEND

- SECTION LINE ————
- 1/4 SECTION LINE ————
- EXISTING STREET AND ALLEY LINES ————
- PROPOSED STREET AND ALLEY LINES - - - - -
- RAILROAD RIGHT-OF-WAY LINES ————
- RIGHT-OF-WAY EASEMENT LINES ————
- R.O.W. JURISDICTIONAL LIMITS - - - - -
- MILWAUKEE CITY LIMITS - - - - -

- PROPOSED R.O.W. AMENDMENTS (VACATION)
- EXCESS STATE RIGHT-OF-WAY (SOLD)

DATE: 1/17/23
APPROVED: CITY ENGINEER

SEC. 113-32	REVISED	SEC. 113-32	DRAWN
			6-23-67 E.F.A.
			REVISED
.0014	10-5-1971	JOW	
.0030	7-30-1974	KNY	
.0044	5-2-1978	MCW	
.0057	1-20-1981	MCW	
.0058	5-8-1981	MCW	
.0059	10-27-1981	MCW	
.0065	12-21-1984	MCW	
.0096	7-25-1997	WEF	
.0097	10-30-1998	WEF	
.0101	9-25-2001	WEF	
.0103	7-16-2002	WEF	
.0104	6-24-2003	WEF	
.0107	5-31-2006	WEF	
.0108	5-30-2007	WEF	
.0109	4-9-2008	WEF	
.0112	7-2-2013	WEF	
.0119	3-23-2021	WEF	



SEE DETAIL

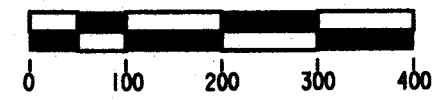
N.E. 1/4 SEC. 32, T. 7 N., R. 21 E.

409
416
443

OFFICIAL MAP



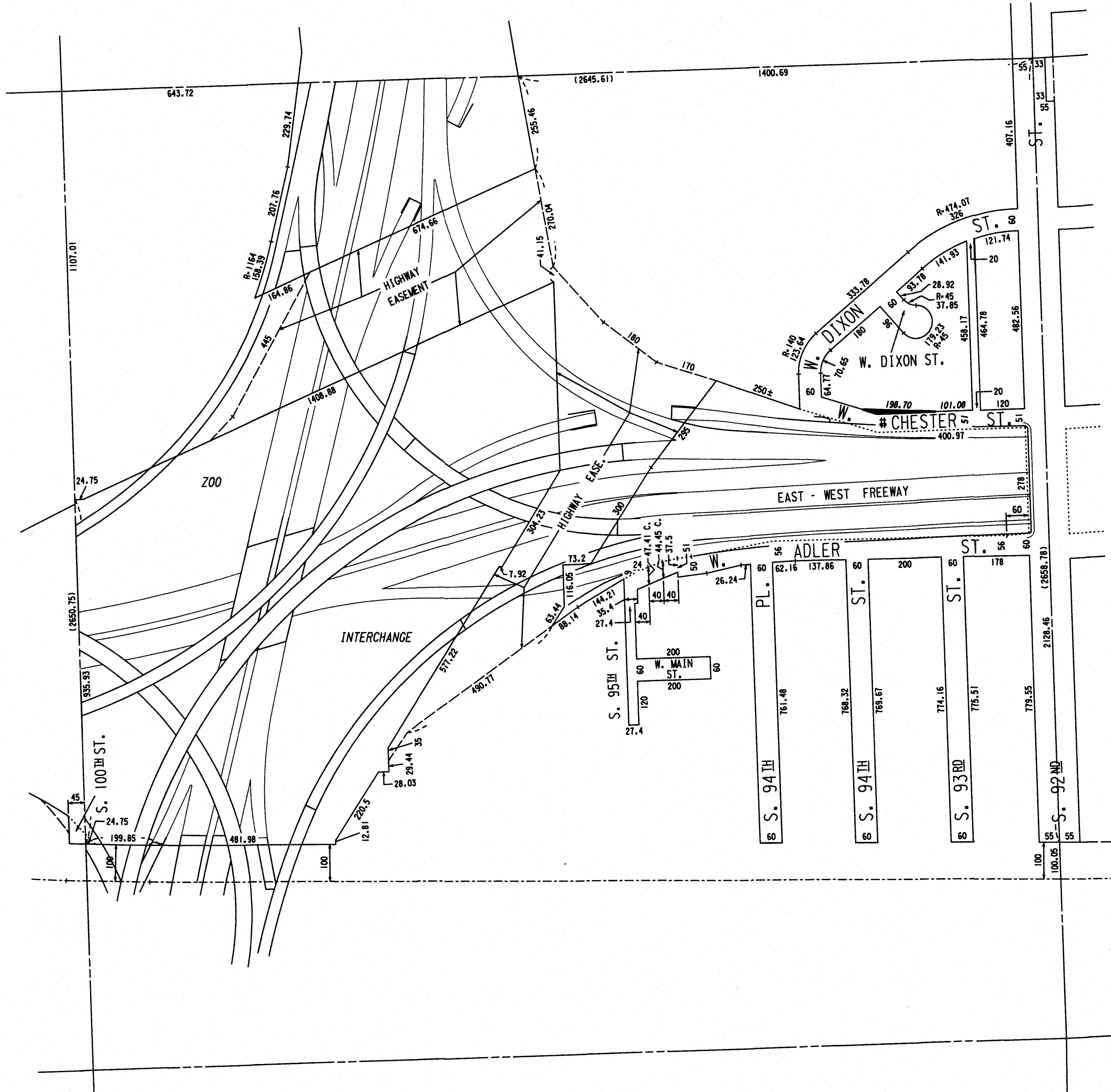
COMPILED AND DRAWN BY
INFRASTRUCTURE SERVICES
CITY OF MILWAUKEE,
WISCONSIN



LEGEND

- SECTION LINE _____
- 1/4 SECTION LINE _____
- EXISTING STREET AND ALLEY LINES _____
- PROPOSED STREET AND ALLEY LINES _____
- RAILROAD RIGHT-OF-WAY LINES _____
- RIGHT-OF-WAY EASEMENT LINES _____
- R.O.W. JURISDICTIONAL LIMITS _____
- MILWAUKEE CITY LIMITS _____

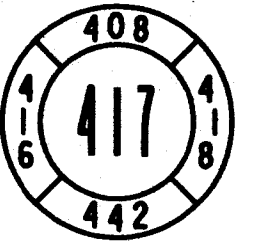
PROPOSED R.O.W. AMENDMENTS (ADDITION)



DATE: 1/17/23
APPROVED: CITY ENGINEER

SEC. 113-32	DRAWN	
	6-23-67	E.F.A.
.0114	REVISED	
	1-19-2016	WEF

N.W. 1/4 SEC. 33, T. 7 N., R. 21 E.



OFFICIAL MAP

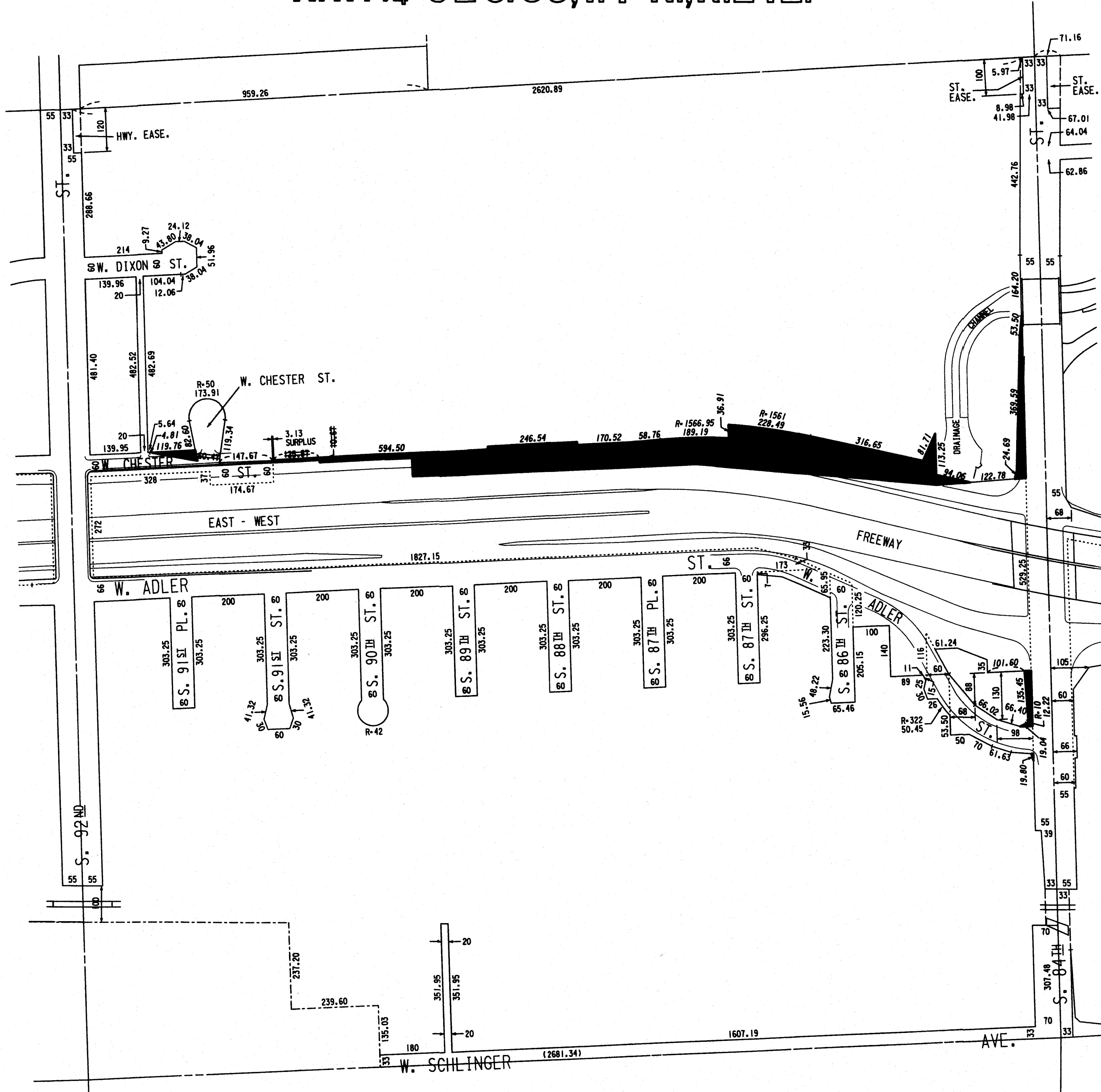


COMPILED AND DRAWN BY
INFRASTRUCTURE SERVICES
 CITY OF MILWAUKEE,
 WISCONSIN



LEGEND

- SECTION LINE ————
- 1/4 SECTION LINE - - - -
- EXISTING STREET AND ALLEY LINES ————
- PROPOSED STREET AND ALLEY LINES - - - -
- RAILROAD RIGHT-OF-WAY LINES ————
- RIGHT-OF-WAY LIMITS - - - -
- EASEMENT LINES ————
- R.O.W. JURISDICTIONAL LIMITS - - - -
- MILWAUKEE CITY LIMITS - - - -
- PROPOSED R.O.W. AMENDMENTS (ADDITION) ■■■■

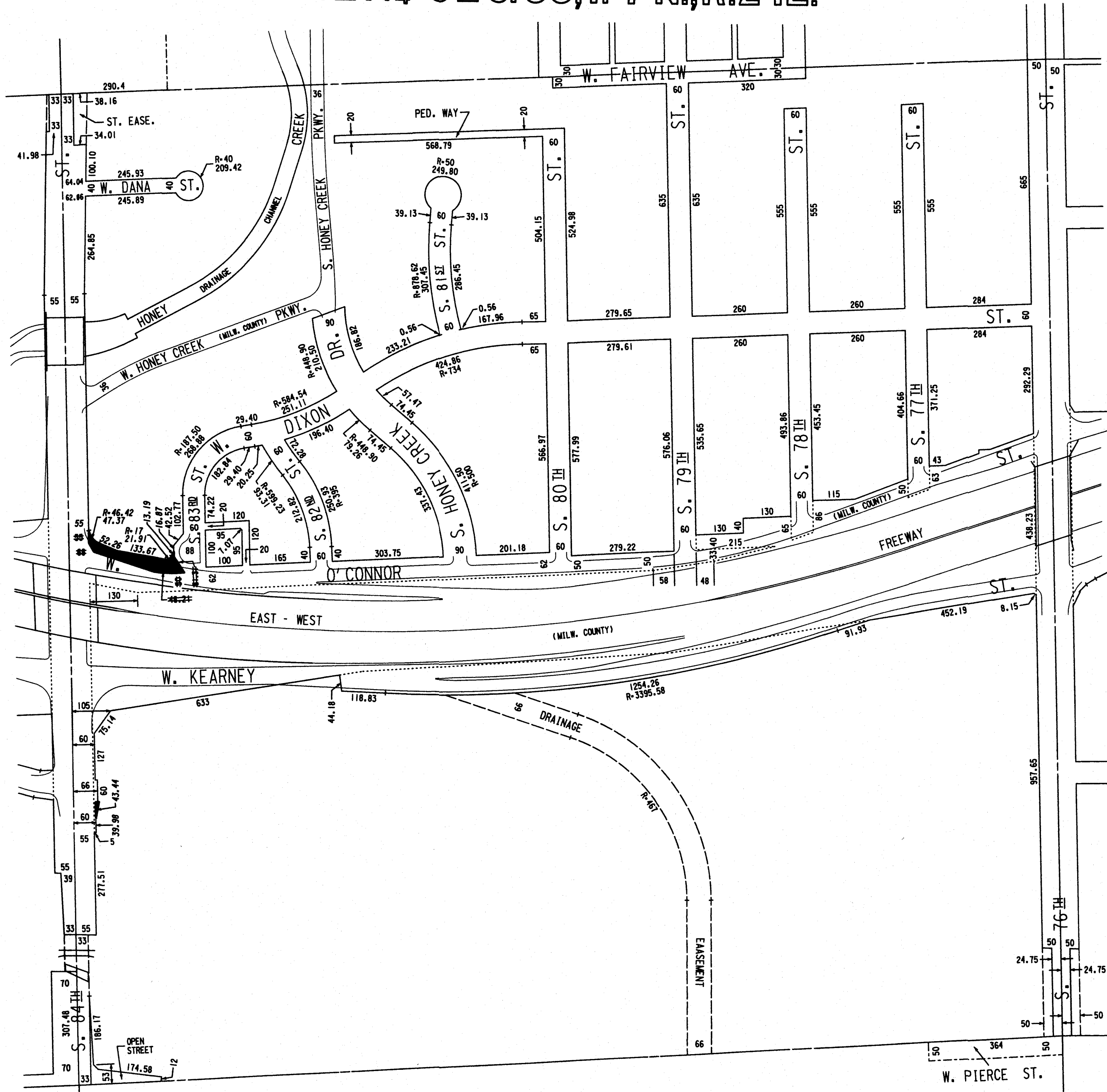


DATE: 1/17/23
 APPROVED: *[Signature]*
 CITY ENGINEER

SEC. 113-32	DRAWN
	6-23-67 E.F.A.
	REVISED
.0097	10-30-1998 WEF

N.E. 1/4 SEC. 33, T. 7 N., R. 21 E.

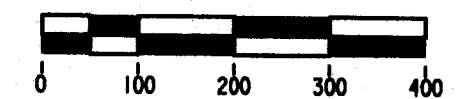
407
418
441



OFFICIAL MAP



COMPILED AND DRAWN BY
INFRASTRUCTURE SERVICES
CITY OF MILWAUKEE,
WISCONSIN



LEGEND

- SECTION LINE ————
- 1/4 SECTION LINE - - - - -
- EXISTING STREET AND ALLEY LINES ————
- PROPOSED STREET AND ALLEY LINES - - - - -
- RAILROAD RIGHT-OF-WAY LINES ————
- RIGHT-OF-WAY EASEMENT LINES - - - - -
- R.O.W. JURISDICTIONAL LIMITS (MILW. COUNTY)
- MILWAUKEE CITY LIMITS - - - - -
- PROPOSED R.O.W. AMENDMENTS (ADDITION) [Black Box]

DATE: 1/17/23
APPROVED: *[Signature]*
CITY ENGINEER

SEC. 113-32	DATE	BY
	6-23-67	E.F.A.
	REVISED	
.0054	1-15-1980	TJS
.0066	3-5-1985	MCW
.0114	1-19-2016	WEF

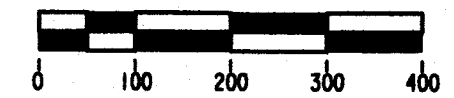
N.W. 1/4 SEC. 33, T. 7 N., R. 22 E.

396
429
430

OFFICIAL MAP



COMPILED AND DRAWN BY
INFRASTRUCTURE SERVICES
CITY OF MILWAUKEE,
WISCONSIN



LEGEND

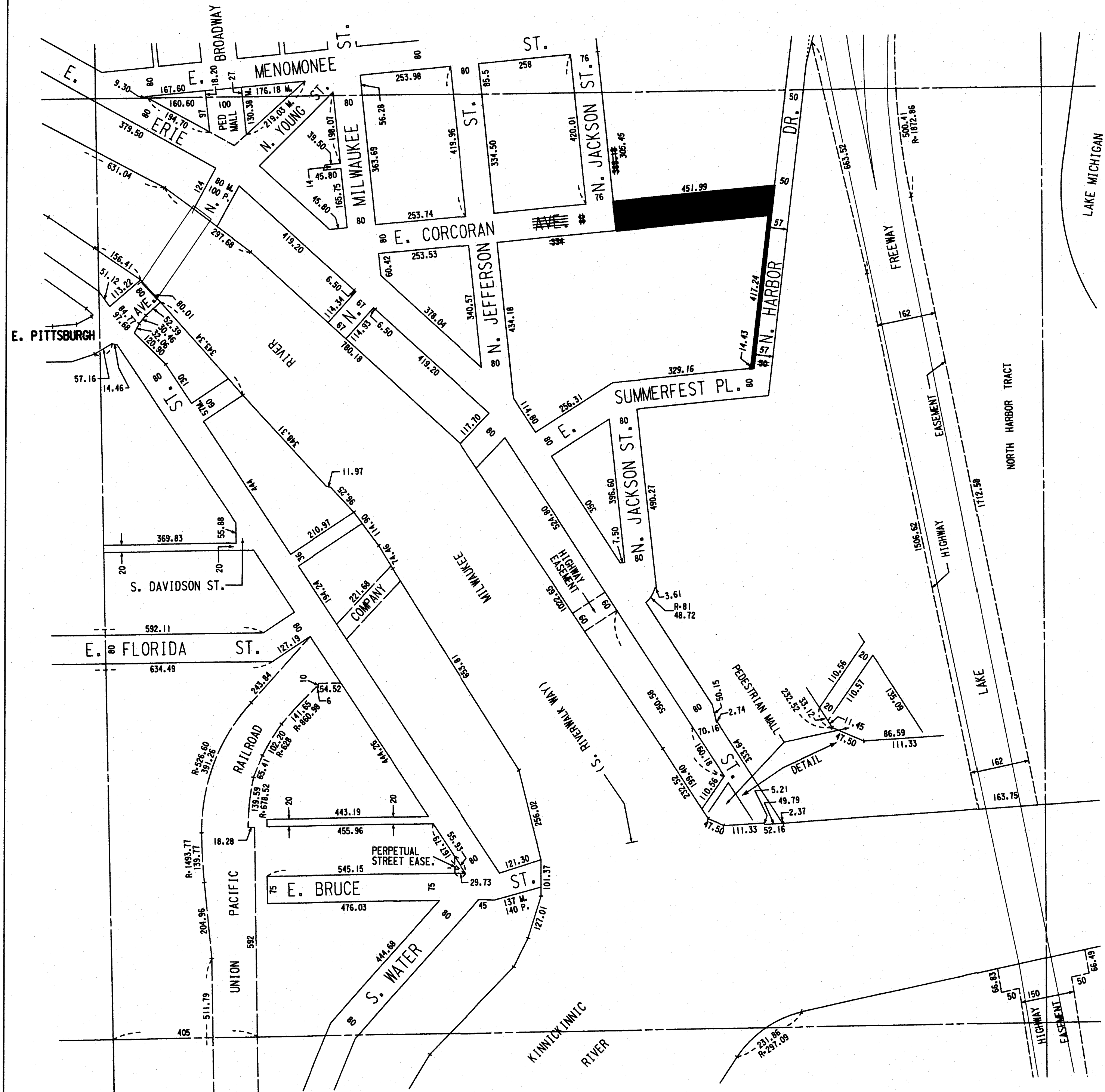
- SECTION LINE ————
- 1/4 SECTION LINE ————
- EXISTING STREET AND ALLEY LINES ————
- PROPOSED STREET AND ALLEY LINES - - - - -
- RAILROAD RIGHT-OF-WAY LINES ————
- RIGHT-OF-WAY EASEMENT LINES - - - - -
- R.O.W. JURISDICTIONAL LIMITS
- MILWAUKEE CITY LIMITS - - - - -

PROPOSED R.O.W. AMENDMENTS (ADDITION)

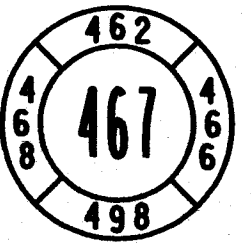
DATE: 1/17/23
APPROVED: CITY ENGINEER

SEC. 113-32	DRAWN	REVISED	E.F.A.
	6-23-67		
.0028	1-15-1974		KNY
.0042	7-26-1977		MCW
.0051	5-1-1979		MCW
.0058	5-5-1981		MCW
.0073	3-29-1998		AA
.0080	10-16-1990		WEF
.0088	9-28-1993		WEF
.0092	9-27-1995		WEF
.0093	6-25-1996		WEF
.0098	7-13-1999		WEF
.0102	12-21-2001		WEF
.0107	5-31-2006		WEF
.0109	4-9-2008		WEF
.0110	5-27-2009		WEF
.0112	7-2-2013		WEF
.0114	1-19-2016		WEF

UPDATED 10-20-2021



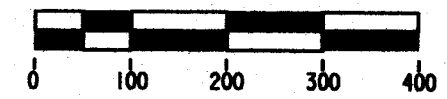
S.E. 1/4 SEC. 5, T. 6 N., R. 22 E.



OFFICIAL MAP



COMPILED AND DRAWN BY
INFRASTRUCTURE SERVICES
 CITY OF MILWAUKEE,
 WISCONSIN

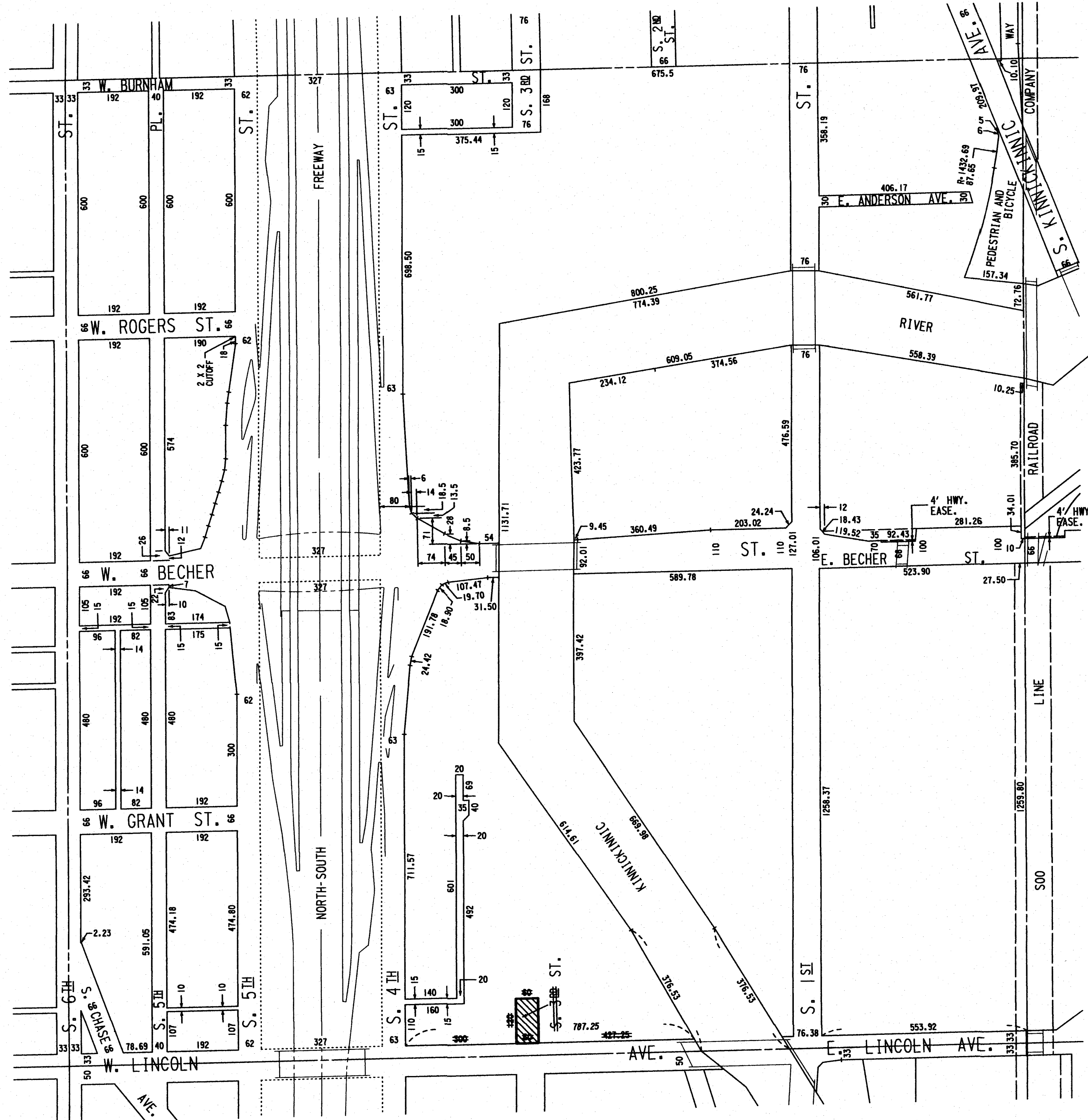


LEGEND

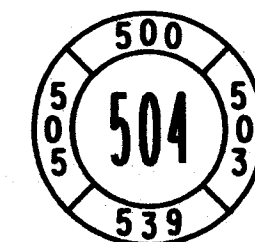
- SECTION LINE ————
- 1/4 SECTION LINE ————
- EXISTING STREET AND ALLEY LINES ————
- PROPOSED STREET AND ALLEY LINES - - - - -
- RAILROAD RIGHT-OF-WAY LINES ————
- RIGHT-OF-WAY EASEMENT LINES ————
- R.O.W. JURISDICTIONAL LIMITS - - - - -
- MILWAUKEE CITY LIMITS - - - - -
- PROPOSED R.O.W. AMENDMENTS (VACATION) [Hatched Box]

DATE: 1/17/23
 APPROVED: *[Signature]*
 CITY ENGINEER

SEC. 113-32	DRAWN	
	6-23-67	I.P.Z.
	REVISED	
.0014	10-5-1971	JDW
.0051	5-1-1979	MCW
.0058	5-5-1981	MCW
.0067	11-12-1985	MCW
.0075	11-18-1988	MCW
.0111	7-27-2010	WEF
.0117	5-29-2019	WEF



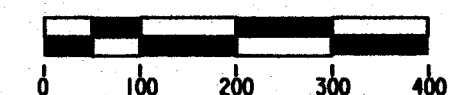
S.E. 1/4 SEC. 9, T. 6 N., R. 22E.



OFFICIAL MAP



COMPILED AND DRAWN BY
INFRASTRUCTURE SERVICES
CITY OF MILWAUKEE,
WISCONSIN



LEGEND

- SECTION LINE ————
- 1/4 SECTION LINE - - - -
- EXISTING STREET AND ALLEY LINES ————
- PROPOSED STREET AND ALLEY LINES - - - -
- RAILROAD RIGHT-OF-WAY LINES ————
- RIGHT-OF-WAY EASEMENT LINES - - - -
- R.O.W. JURISDICTIONAL LIMITS - - - -
- MILWAUKEE CITY LIMITS ————

EXCESS STATE RIGHT-OF WAY (SOLD)

DATE: 1/17/23
APPROVED: CITY ENGINEER

SEC. 113-32	DRAWN	
	6-23-67	E.F.A.
	REVISED	
.0031	12-23-1974	KNY
.0086	12-18-1992	WEF
.0093	6-25-1996	WEF
.0097	10-30-1998	WEF
.0099	7-25-2000	WEF
.0101	9-25-2001	WEF

