





GENUINE PARTS COMPANY  
2999 CIRCLE 75 PARKWAY  
ATLANTA, GEORGIA 30339  
TELEPHONE: 770-956-2609

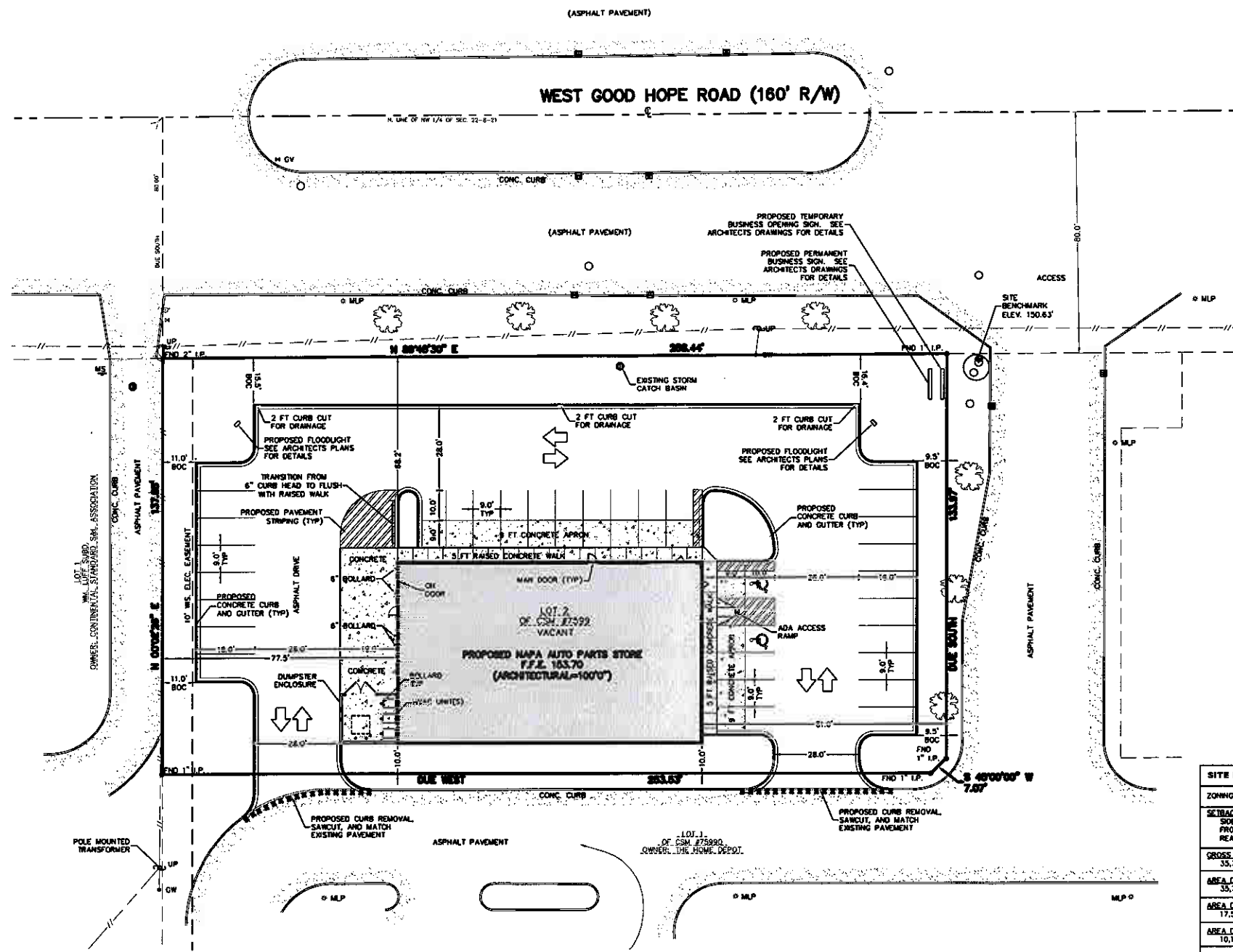


ISSUED FOR CONSTRUCTION

DIMENSIONED SITE PLAN  
**NAPA AUTO PARTS**  
**WEST GOOD HOPE ROAD**  
CITY OF MILWAUKEE, WI

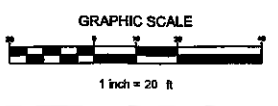
DRAWN BY: N.G.K.  
CHECKED BY: M.A.S.  
DATE: 08/22/06  
JOB NUMBER: C06022R5

**C1.0**  
SHEET 2 OF 7



SITE INFORMATION			
ZONING:	L81 - COMMERCIAL - LOCAL BUSINESS		
SETBACKS	BUILDING	PAVEMENT	
SIDE:	NONE	NONE	
FRONT:	NONE	NONE	
REAR:	NONE	NONE	
GROSS LAND AREA			
33,766 S.F. = 0.821 AC.			
AREA DEVOTED TO NON-RESIDENTIAL USES			
33,766 S.F. = 0.821 AC.			
AREA DEVOTED TO PARKING AND DRIVES			
17,562 S.F. = 0.450 AC.			
AREA DEVOTED TO LANDSCAPED OPEN SPACE			
10,141 S.F. = 0.233 AC.			
BUILDING AREA			
6,000 S.F. = 0.138 AC.			
BUILDING HEIGHT			
MAXIMUM:	45 FEET		
PROPOSED:	20 FEET 8 INCHES		
PARKING RATIO			
REQUIRED:	12 SPACES		
PROPOSED:	33 SPACES 5.5 SPACES PER 1,000 SQUARE FEET OF BUILDING AREA		
IMPERVIOUS AREAS			
PROPOSED:	BUILDING	PAVEMENT	GREENSPACE
	17%	56%	27%

- SITE PLAN NOTES:
- 1.) "BOC" = DIMENSION TAKEN TO BACK OF CURB.
  - 2.) UNLESS OTHERWISE SPECIFIED, ALL DIMENSIONS TAKEN TO FACE OF CURB, FACE OF BUILDING, OR CENTER OF STRIPING.
  - 3.) SEE SHEET C5.0 "SITE PAVING PLAN" FOR PAVING DETAILS.

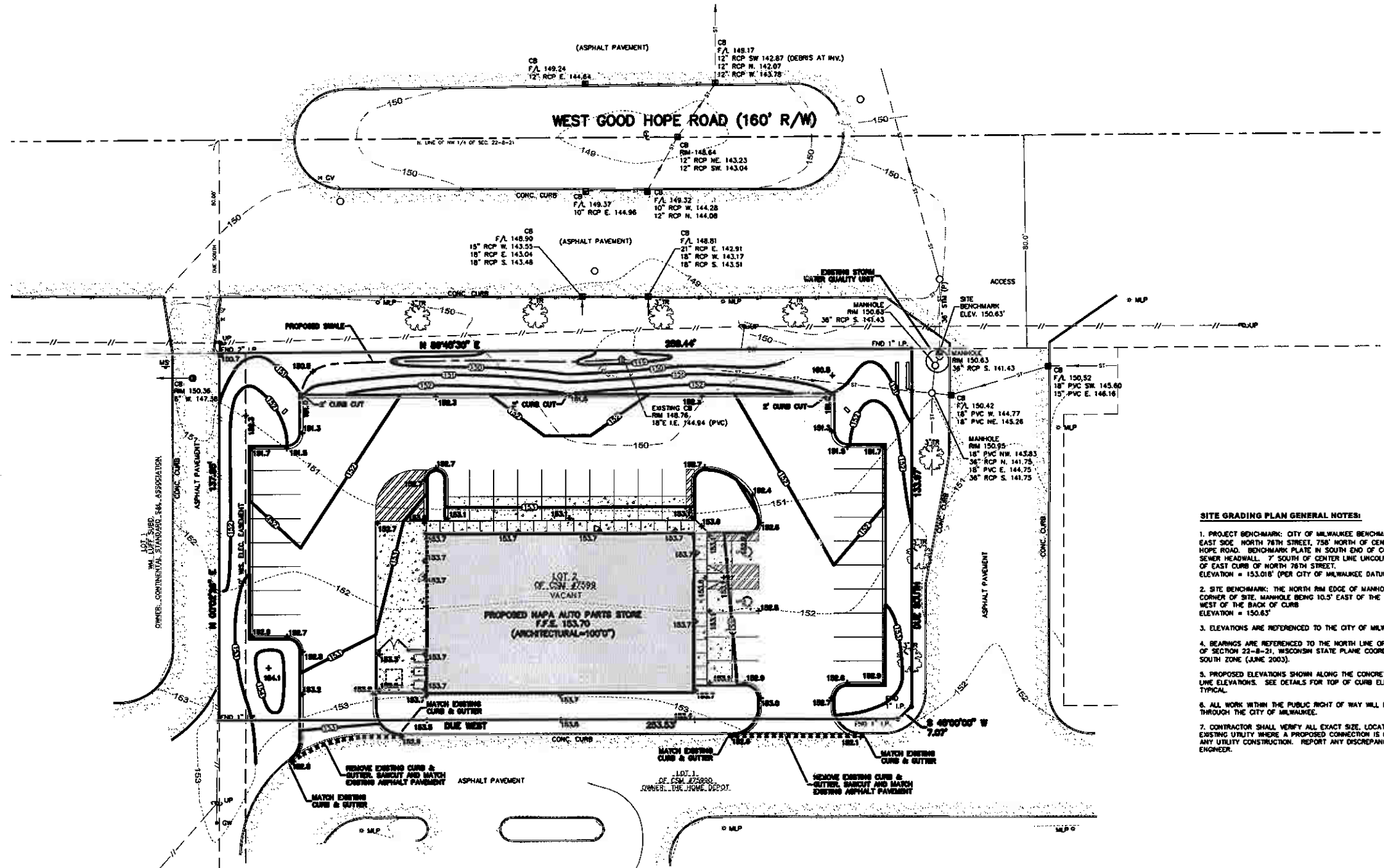


THE CITY OF MILWAUKEE HAS REVIEWED THIS PLAN AND APPROVES THE PROPOSED CONSTRUCTION OF THE PROJECT SHOWN HEREON. THIS APPROVAL IS LIMITED TO THE INFORMATION PROVIDED AND DOES NOT CONSTITUTE A GUARANTEE OF THE ACCURACY OF THE INFORMATION PROVIDED.

GENUINE PARTS COMPANY  
2999 CIRCLE 75 PARKWAY  
ATLANTA, GEORGIA 30339  
TELEPHONE: 770-956-2609



LAND INFORMATION SERVICES, INC.  
ENGINEERS, SURVEYORS & CONSULTANTS  
7712 WATERTOWN PLANK ROAD  
BILLINGS, MT  
WAINWATER, MT 59715  
T 406-251-7443 F 406-251-7444



- SITE GRADING PLAN GENERAL NOTES:**
- PROJECT BENCHMARK: CITY OF MILWAUKEE BENCHMARK #63-01 - THE EAST SIDE, NORTH 78TH STREET, 758' NORTH OF CENTER LINE WEST GOOD HOPE ROAD. BENCHMARK PLATE IN SOUTH END OF CONCRETE BOX STORM SEWER HEADWALL, 7' SOUTH OF CENTER LINE LINCOLN CREEK AND 21' EAST OF EAST CURB OF NORTH 78TH STREET. ELEVATION = 153.018' (PER CITY OF MILWAUKEE DATUM)
  - SITE BENCHMARK: THE NORTH RM EDGE OF MANHOLE LOCATED IN THE NE CORNER OF SITE, MANHOLE BEING 10.5' EAST OF THE PROPERTY LINE AND 3.5' WEST OF THE BACK OF CURB. ELEVATION = 150.63'
  - ELEVATIONS ARE REFERENCED TO THE CITY OF MILWAUKEE LOCAL DATUM.
  - BEARINGS ARE REFERENCED TO THE NORTH LINE OF THE NORTHWEST 1/4 OF SECTION 22-B-21, WISCONSIN STATE PLANE COORDINATE SYSTEM GRD, SOUTH ZONE (JUNE 2003).
  - PROPOSED ELEVATIONS SHOWN ALONG THE CONCRETE CURBS INDICATE FLOW LINE ELEVATIONS. SEE DETAILS FOR TOP OF CURB ELEVATIONS, 6" HIGHER TYPICAL.
  - ALL WORK WITHIN THE PUBLIC RIGHT OF WAY WILL REQUIRE PERMITTING THROUGH THE CITY OF MILWAUKEE.
  - CONTRACTOR SHALL VERIFY ALL EXACT SIZE, LOCATION, AND ELEVATION OF EXISTING UTILITY WHERE A PROPOSED CONNECTION IS BEING MADE, PRIOR TO ANY UTILITY CONSTRUCTION. REPORT ANY DISCREPANCIES TO THE DESIGN ENGINEER.

ISSUED FOR CONSTRUCTION

SITE GRADING PLAN  
**NAPA AUTO PARTS**  
**WEST GOOD HOPE ROAD**  
CITY OF MILWAUKEE, WI

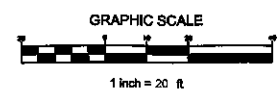
LEGEND	
	PROPOSED SAWCUT & MATCH EXISTING PAVEMENT
	EXISTING CONTOUR
	PROPOSED ELEVATION
	EXISTING STORM SEWER
	EXISTING COMBINATION SEWER
	EXISTING SANITARY SEWER
	EXISTING SANITARY FORCE MAIN
	EXISTING M.S. SEWER
	EXISTING WATER MAIN
	UNDERGROUND GAS
	UNDERGROUND ELECTRICAL
	OVERHEAD UTILITY LINES
	UNDERGROUND TELEPHONE
	UNDERGROUND CABLE TV
	UNDERGROUND COMMUNICATIONS
	UNDERGROUND FIBER OPTIC
	PROPOSED STORM SEWER
	PROPOSED SANITARY SEWER
	PROPOSED WATER MAIN/SERVICE

DRAWN BY: N.G.K.  
CHECKED BY: M.A.S.  
DATE: 08/22/06  
JOB NUMBER: C06022R5

**C2.0**  
SHEET 3 OF 7

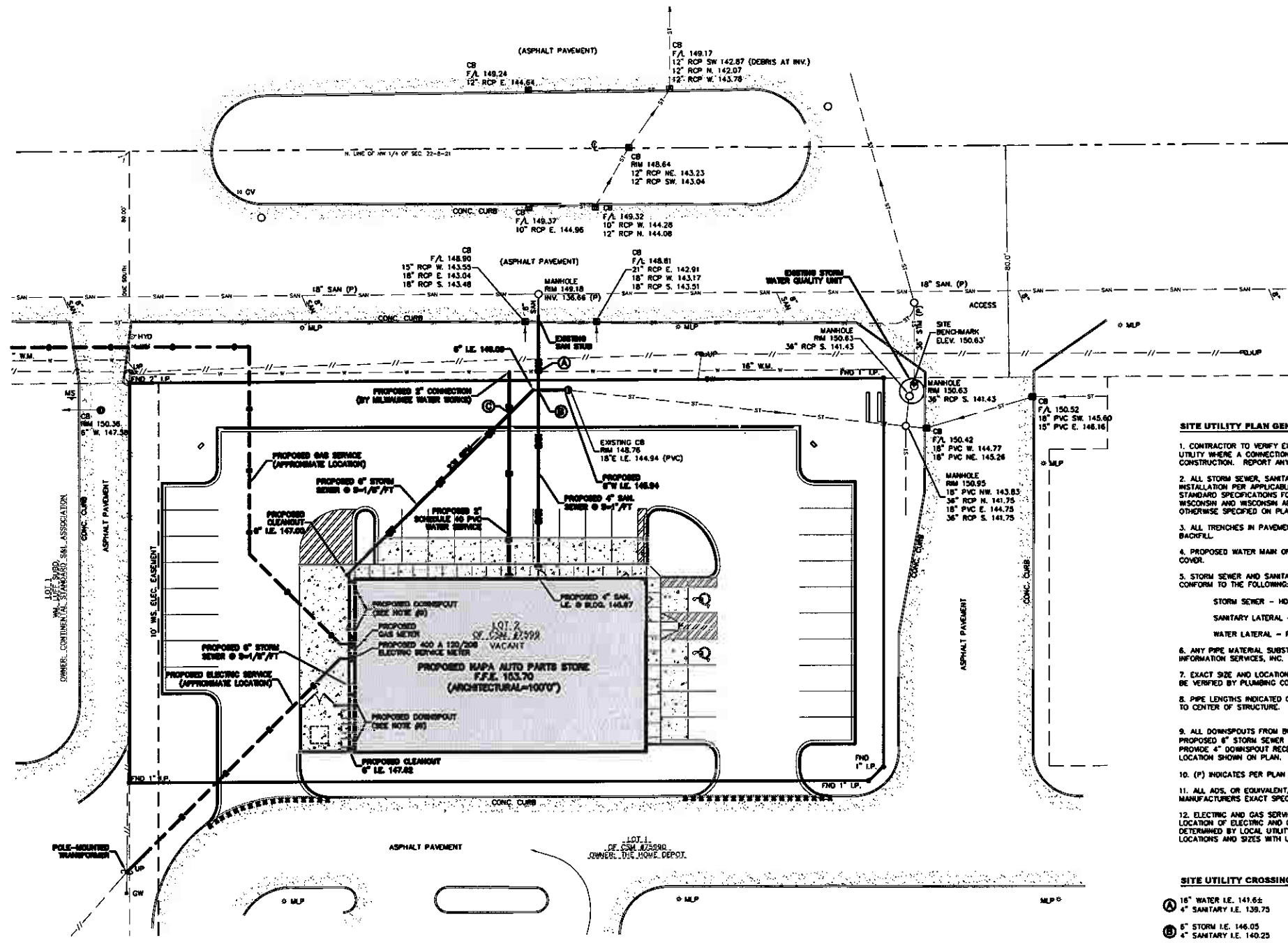


FOR MORE INFORMATION ON PROPOSED PROJECTS, VISIT OUR WEBSITE AT [WWW.DIGGERSHOTLINE.COM](http://WWW.DIGGERSHOTLINE.COM)  
CALL 800-451-4511  
OR 414-221-4511  
OR 414-221-7444  
OR 414-221-7445



GENUINE PARTS COMPANY  
2999 CIRCLE 75 PARKWAY  
ATLANTA, GEORGIA 30339  
TELEPHONE: 770-956-2809

**LS**  
LAND INFORMATION SERVICES, INC.  
ENGINEERS, SURVEYORS & CONSULTANTS  
712 WATERSTOWN PLAZA  
BILDERGESS  
WATKINS, WI 53185  
TEL: 414-965-7448 FAX: 414-965-7449



- SITE UTILITY PLAN GENERAL NOTES**
- CONTRACTOR TO VERIFY EXACT SIZE, LOCATION, AND ELEVATION OF EXISTING UTILITY WHERE A CONNECTION IS BEING PROPOSED. PRIOR TO ANY UTILITY CONSTRUCTION, REPORT ANY DISCREPANCIES TO DESIGN ENGINEER.
  - ALL STORM SEWER, SANITARY SEWER, AND WATER MAIN MATERIALS AND INSTALLATION PER APPLICABLE SECTIONS OF THE LATEST EDITIONS OF THE STANDARD SPECIFICATIONS FOR SEWER AND WATER CONSTRUCTION IN WISCONSIN AND WISCONSIN ADMINISTRATIVE PLUMBING CODE, UNLESS OTHERWISE SPECIFIED ON PLANS OR SCHEDULES.
  - ALL TRENCHES IN PAVEMENT AREAS SHALL HAVE COMPACTED GRAVEL BACKFILL.
  - PROPOSED WATER MAIN OR LATERALS SHALL HAVE A MINIMUM 6 FEET OF COVER.
  - STORM SEWER AND SANITARY & WATER LATERAL MATERIALS SHALL CONFORM TO THE FOLLOWING:  
STORM SEWER - HDPE - N-12 (ADS-WATERTIGHT), OR EQUIVALENT  
SANITARY LATERAL - PVC - SHALL CONFORM TO TABLE 84.30-3  
WATER LATERAL - PVC - SHALL CONFORM TO TABLE 84.30-7
  - ANY PIPE MATERIAL SUBSTITUTIONS MUST BE APPROVED BY LAND INFORMATION SERVICES, INC.
  - EXACT SIZE AND LOCATION OF PROPOSED WATER & SANITARY LATERALS TO BE VERIFIED BY PLUMBING CONTRACTOR.
  - PIPE LENGTHS INDICATED ON THE UTILITY PLAN ARE CENTER OF STRUCTURE TO CENTER OF STRUCTURE.
  - ALL DOWNSPOUTS FROM BUILDING ROOF SHALL BE CONNECTED TO PROPOSED 6" STORM SEWER AS INDICATED ON THE PLAN. PLUMBER TO PROMOTE 4" DOWNSPOUT RECEIVER, AND 4"x8" WYE AT EACH DOWNSPOUT LOCATION SHOWN ON PLAN.
  - (P) INDICATES PER PLAN INFORMATION.
  - ALL ADS, OR EQUIVALENT, STORM SEWER SHALL BE INSTALLED PER MANUFACTURERS EXACT SPECIFICATIONS.
  - ELECTRIC AND GAS SERVICES SHOWN IN GENERAL LOCATIONS. EXACT LOCATION OF ELECTRIC AND GAS SERVICE TO PROPOSED BUILDING TO BE DETERMINED BY LOCAL UTILITY. CONTRACTOR TO COORDINATE & VERIFY LOCATIONS AND SIZES WITH UTILITY PRIOR TO BUILDING CONSTRUCTION.

- SITE UTILITY CROSSINGS**
- (A) 16" WATER I.E. 141.62
  - 4" SANITARY I.E. 139.73
  - (B) 6" STORM I.E. 146.05
  - 4" SANITARY I.E. 140.25
  - (C) 6" STORM I.E. 148.19
  - 2" WATER I.E. 144.52

**LEGEND**

-----	PROPOSED SAWCUT & MATCH EXISTING PAVEMENT
-----	EXISTING STORM SEWER
-----	EXISTING COMBINATION SEWER
-----	EXISTING SANITARY SEWER
-----	EXISTING SANITARY FORCE MAIN
-----	EXISTING M.S. SEWER
-----	EXISTING WATER MAIN
-----	UNDERGROUND GAS
-----	UNDERGROUND ELECTRICAL
-----	OVERHEAD UTILITY LINES
-----	UNDERGROUND TELEPHONE
-----	UNDERGROUND CABLE TV
-----	UNDERGROUND COMMUNICATIONS
-----	UNDERGROUND FIBER OPTIC
-----	PROPOSED STORM SEWER
-----	PROPOSED SANITARY SEWER
-----	PROPOSED WATER MAIN/SERVICE

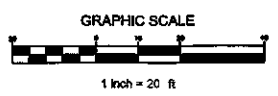
ISSUED FOR CONSTRUCTION

**SITE UTILITY PLAN**  
**NAPA AUTO PARTS**  
**WEST GOOD HOPE ROAD**  
 CITY OF MILWAUKEE, WI

DRAWN BY: N.G.K.  
CHECKED BY: M.A.B.  
DATE: 08/22/06  
JOB NUMBER: C06022R5

**C3.0**  
SHEET 4 OF 7

**DIGGERS HOTLINE**  
CALL BEFORE YOU DIG  
1-800-4-A-DIG  
WWW.4ADIG.COM



**GENUINE PARTS COMPANY**  
 2999 CIRCLE 75 PARKWAY  
 ATLANTA, GEORGIA 30339  
 TELEPHONE: 770-956-2609

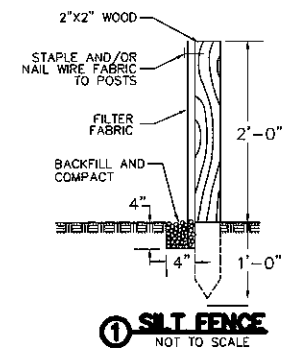
**LIS**  
**LAND INFORMATION SERVICES, INC.**  
 ENGINEERS, SURVEYORS & CONSULTANTS  
 9712 WATERLOO PLAZA ROAD  
 BUILDING 82  
 WASHINGTON, DC 20007  
 T 202-525-9333 F 202-525-9334

**EROSION CONTROL PRACTICES SCHEDULE**

- ① SILT FENCE
- ② CONSTRUCTION EXIT
- ③ INLET GRATE SCREEN
- ④ TURF REINFORCEMENT MATTING (PERMANENT)
- ⑤ FIELD INLET PROTECTION

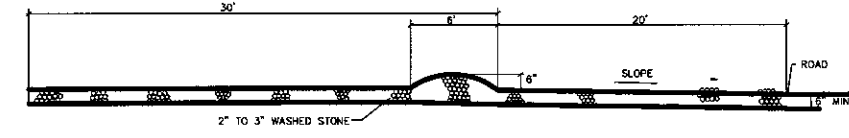
**SILT FENCE CONSTRUCTION SPECIFICATIONS**

1. CONSTRUCT SILT FENCE AROUND THE DISTURBED AREAS AS SHOWN ON EROSION CONTROL PLAN, TO PREVENT SEDIMENT FROM BEING WASHED INTO THE DRAINAGE SYSTEM.
2. LOCATE POSTS DOWNSLOPE OF FABRIC TO HELP SUPPORT FENCING.
3. WHEN JOINTS ARE NECESSARY, SECURELY FASTEN THE FABRIC AT A SUPPORT POST WITH OVER LAP TO THE NEXT POST.
4. FILTER FABRIC TO BE OF NYLON, POLYESTER, PROPYLENE OR ETHYLENE YARN WITH EXTRA STRENGTH - 100 LB/LIN. IN. (MINIMUM) - AND WITH A FLOW RATE OF 10 GAL./SQ. FT./MIN. FABRIC SHOULD CONTAIN ULTRAVIOLET RAY INHIBITORS AND STABILIZERS REACHING A STABILITY OF 90 PERCENT USING TEST METHOD ASTM D-4355.
5. THE FILTER FABRIC SHALL BE ANCHORED BY SPREADING AT LEAST 8 INCHES OF FABRIC IN A 4" X 4" TRENCH.
6. THE FILTER FABRIC SHALL BE STAPLED AND/OR NAILED TO THE UPSLOPE SIDE OF THE POSTS, USING AT LEAST 0.5 INCH STAPLES.
7. POST TO BE 2X2" PINE, 3 FEET LONG, THE MAXIMUM SPACING OF POSTS FOR NON-WOVEN SILT FENCE, SHALL BE 3 FEET. (NO SUPPORT CORD IS REQUIRED FOR THE 3 FOOT POST SPACING). THE MAXIMUM POST SPACING FOR NONWOVEN FABRIC WITH SUPPORT NET AND TOP SUPPORT CORD OR FOR WOVEN FABRIC WITH SUPPORT CORD SHALL BE 8 FEET.



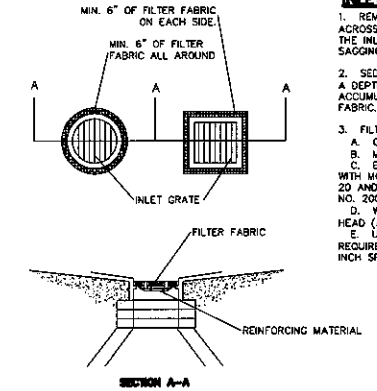
① SILT FENCE  
NOT TO SCALE

**② CONSTRUCTION EXIT**  
NOT TO SCALE



**INLET GRATE SCREEN CONSTRUCTION SPECIFICATIONS**

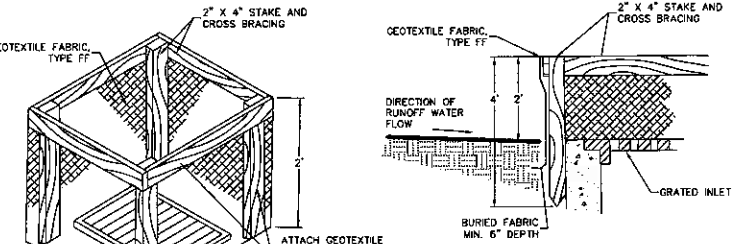
1. REMOVE INLET GRATE AND PLACE A SINGLE SHEET OF FILTER FABRIC ACROSS THE OPENING. THE FABRIC SHOULD EXTEND AT LEAST 6" BEYOND THE INLET OPENING. A REINFORCING MATERIAL MAY BE REQUIRED TO PREVENT SAGGING.
2. SEDIMENT DEPOSITS SHALL BE REMOVED AFTER EACH STORM EVENT OR AT A DEPTH OF 1". EXTREME CARE SHALL BE TAKEN NOT TO SPILL ACCUMULATED SEDIMENT INTO INLET, WHEN CLEANING OR REPLACING FILTER FABRIC.
3. FILTER FABRIC SHALL HAVE THE FOLLOWING PROPERTIES:
  - A. GRAB STRENGTH: 1000 LB. (ASTM D-3786)
  - B. MULLEN BURST: 200 PSI (ASTM D-3786)
  - C. EQUIVALENT OPENING SIZE: BETWEEN 50 AND 140 FOR SOILS WITH MORE THAN 15 PERCENT BY WEIGHT PASSING A NO. 200 SIEVE, BETWEEN 20 AND 50 FOR SOILS WITH LESS THAN 15 PERCENT BY WEIGHT PASSING A NO. 200 SIEVE.
  - D. WATER FLOW RATE OF 10 GAL./MIN./50 FT. AT 50 MM CONSTANT HEAD (ASTM D-4491)
  - E. ULTRA VIOLET RADIATION STABILITY OF 90% F. IF SUPPORT NETTING IS REQUIRED, NETTING SHALL BE AN INDUSTRIAL POLYPROPYLENE WITH A 3/4 INCH SPACING OR EQUIVALENT.



③ INLET GRATE SCREEN  
NOT TO SCALE

**INLET PROTECTION, TYPE A SPECIFICATIONS**

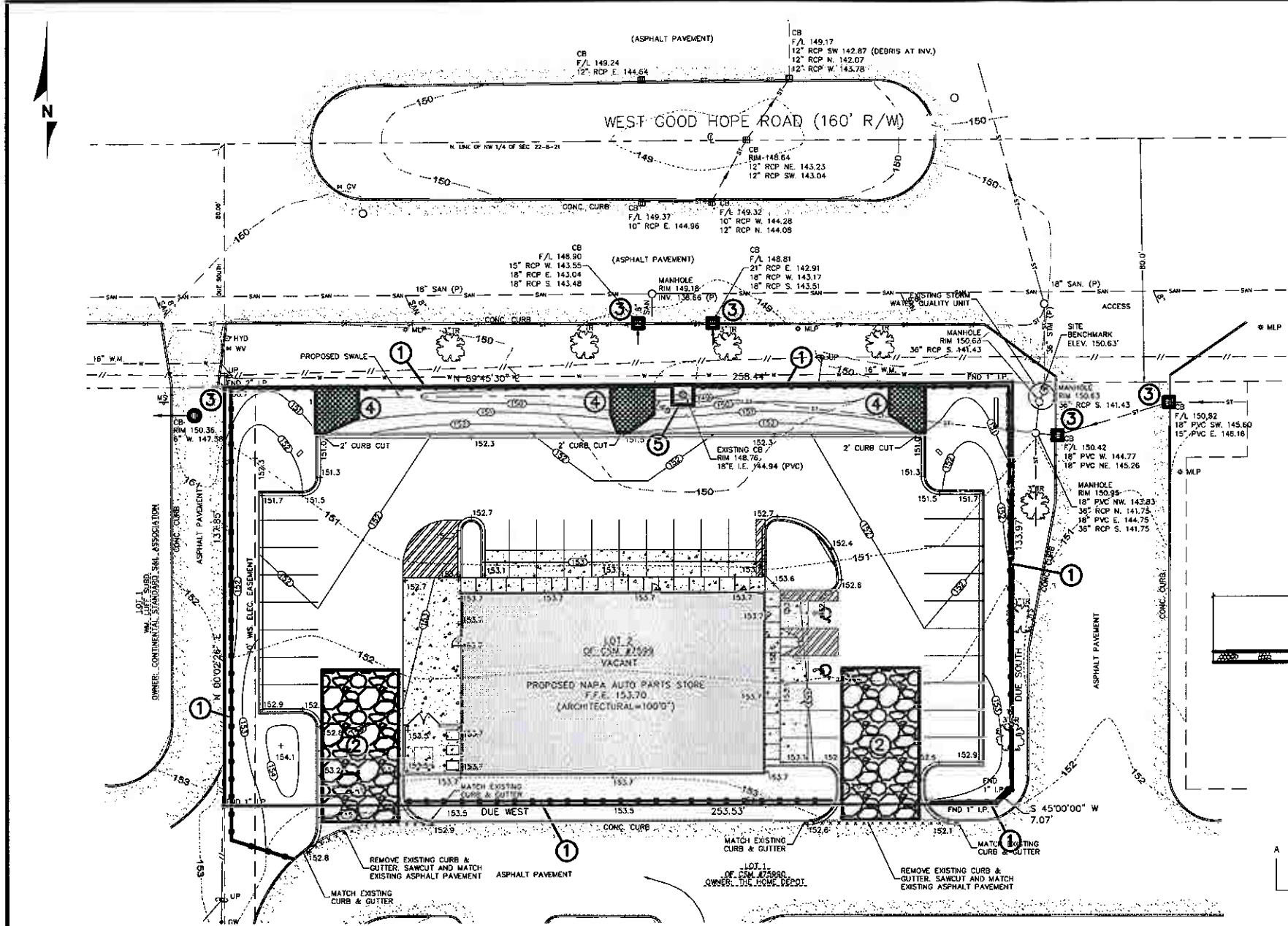
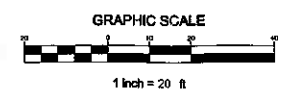
- INLET PROTECTION DEVICES SHALL BE MAINTAINED OR REPLACED AT THE DEPARTMENT'S EROSION CONTROL PRODUCT ACCEPTABILITY LIST MAY BE SUBSTITUTED.
- WHEN REMOVING OR MAINTAINING INLET PROTECTION, CARE SHALL BE TAKEN SO THAT THE SEDIMENT TRAPPED ON THE GEOTEXTILE FABRIC DOES NOT FALL INTO THE INLET. ANY MATERIAL FALLING INTO THE INLET SHALL BE REMOVED IMMEDIATELY.
1. FINISHED SIZE, INCLUDING FLAP POCKETS WHERE REQUIRED, SHALL EXTEND A MINIMUM OF 10' AROUND THE PERIMETER TO FACILITATE MAINTENANCE OR REMOVAL.
  2. FOR INLET PROTECTION, TYPE C WITH CURB BOX, AN ADDITIONAL 18" OF FABRIC IS WRAPPED AROUND THE WOOD AND SECURED WITH STAPLES. THE WOOD SHALL NOT BLOCK THE ENTIRE HEIGHT OF THE CURB BOX OPENING.
  3. FLAP POCKETS SHALL BE LARGE ENOUGH TO ACCEPT WOOD 2X4.



⑤ FIELD INLET PROTECTION  
NOT TO SCALE

**MAINTENANCE PLAN**

1. ALL EROSION AND SEDIMENT CONTROL PRACTICES WILL BE CHECKED FOR STABILITY AND OPERATION FOLLOWING EVERY RUNOFF-PRODUCTION RAINFALL BUT IN NO CASE LESS THAN ONCE EVERY WEEK. ANY NEEDED REPAIRS WILL BE MADE IMMEDIATELY TO MAINTAIN ALL PRACTICES AS DESIGNED.
2. SEDIMENT WILL BE REMOVED FROM BEHIND THE SILT FENCE WHEN IT BECOMES ABOUT 0.5 FT. DEEP AT THE FENCE. THE SILT FENCE WILL BE REPAIRED AS NECESSARY TO MAINTAIN A BARRIER.
3. ALL SEEDED AREAS WILL BE FERTILIZED, RESEED AS NECESSARY, AND MULCHED ACCORDING TO SPECIFICATIONS IN THE VEGETATIVE PLAN TO MAINTAIN A WOODED, DENSE VEGETATIVE COVER.
4. ANY SEDIMENT REACHING A PUBLIC OR PRIVATE ROAD SHALL BE REMOVED BY STREET CLEANING BEFORE THE END OF EACH DAY.



**DIGGERS HOTLINE**  
 CALL DIGGERS HOTLINE  
 1-800-242-2838  
 24 HOURS A DAY  
 7 DAYS A WEEK  
 BEFORE YOU EXCAVATE  
 MISC. AREA 258-1158

THE LOCATION OF UTILITIES SHOWN ON THIS PLAN IS BASED ON RECORD DRAWINGS AND FIELD SURVEY. THE LOCATION OF UTILITIES NOT SHOWN ON THIS PLAN IS BASED ON RECORD DRAWINGS AND FIELD SURVEY. THE LOCATION OF UTILITIES NOT SHOWN ON THIS PLAN IS BASED ON RECORD DRAWINGS AND FIELD SURVEY.

ISSUED FOR CONSTRUCTION

**EROSION CONTROL PLAN**  
**NAPA AUTO PARTS**  
**WEST GOOD HOPE ROAD**  
**CITY OF MILWAUKEE, WI**

LEGEND	
--- (dashed line)	PROPOSED SAWCUT & MATCH EXISTING PAVEMENT
--- (dotted line)	EXISTING CONTOUR
--- (solid line)	PROPOSED CONTOUR
--- (dashed line with dots)	PROPOSED ELEVATION
--- (solid line with dots)	PROPOSED SILT FENCE
--- (dashed line with dots)	EXISTING STORM SEWER
--- (dashed line with dots)	EXISTING COMBINATION SEWER
--- (dashed line with dots)	EXISTING SANITARY SEWER
--- (dashed line with dots)	EXISTING SANITARY FORCE MAIN
--- (dashed line with dots)	EXISTING M.I.S. SEWER
--- (dashed line with dots)	EXISTING WATER MAIN
--- (dashed line with dots)	UNDERGROUND GAS
--- (dashed line with dots)	UNDERGROUND ELECTRICAL
--- (dashed line with dots)	OVERHEAD UTILITY LINES
--- (dashed line with dots)	UNDERGROUND TELEPHONE
--- (dashed line with dots)	UNDERGROUND CABLE TV
--- (dashed line with dots)	UNDERGROUND COMMUNICATIONS
--- (dashed line with dots)	UNDERGROUND FIBER OPTIC
--- (dashed line with dots)	PROPOSED STORM SEWER
--- (dashed line with dots)	PROPOSED SANITARY SEWER
--- (dashed line with dots)	PROPOSED WATER MAIN/SERVICE

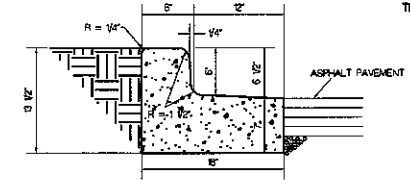
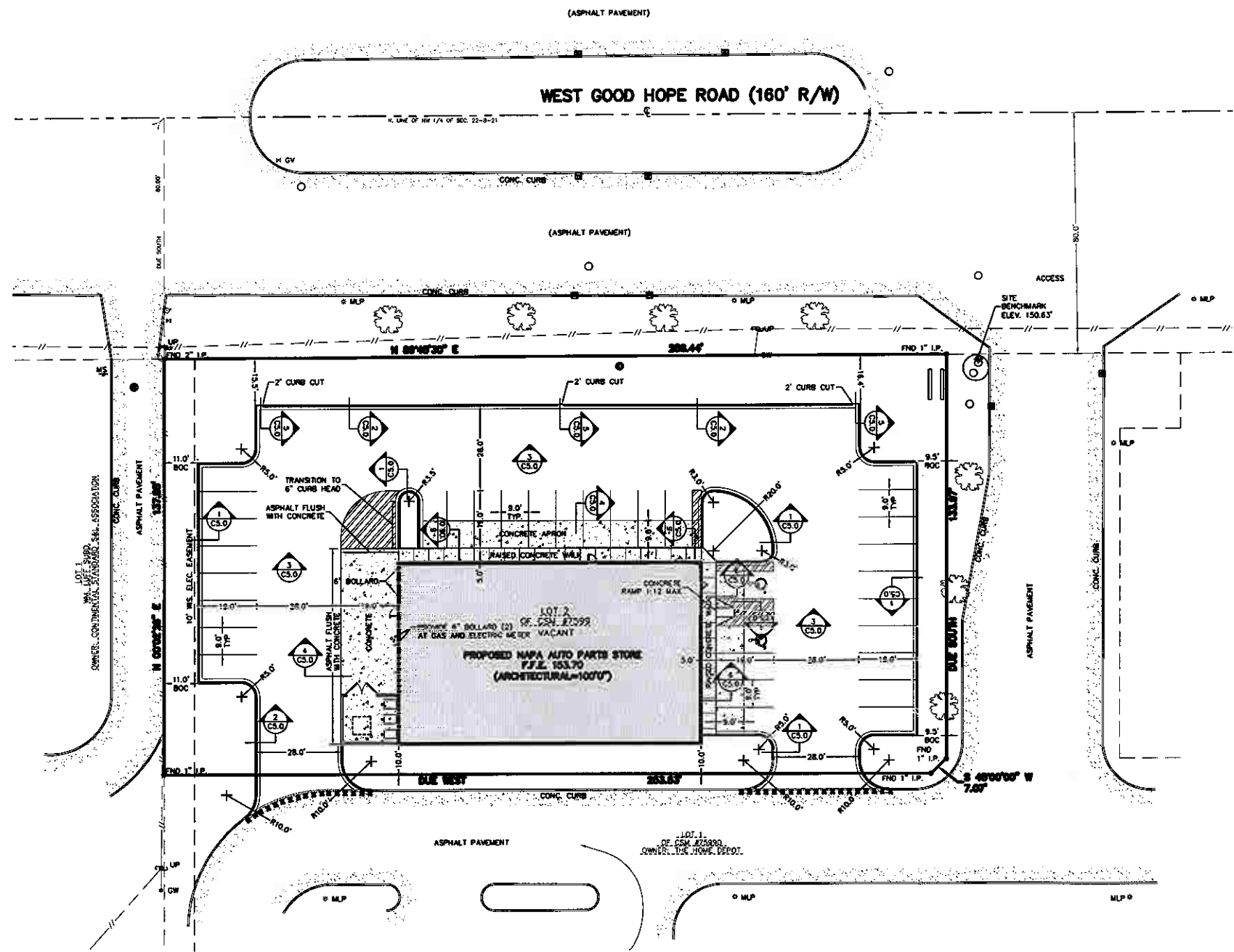
DRAWN BY: N.G.K.  
 CHECKED BY: M.A.B.  
 DATE: 08/22/08  
 JOB NUMBER: C06022R5

**C4.0**  
 SHEET 5 OF 7

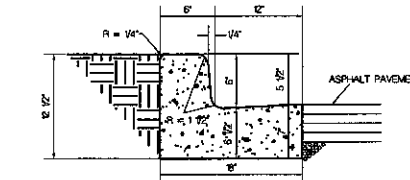
GENUINE PARTS COMPANY  
2999 CIRCLE 75 PARKWAY  
ATLANTA, GEORGIA 30339  
TELEPHONE: 770-956-2609



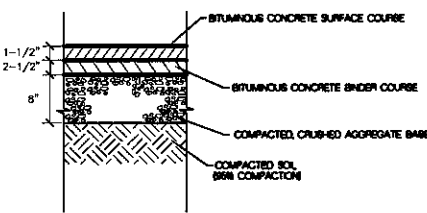
LAND INFORMATION SERVICES, INC.  
ENGINEERS, SURVEYORS & CONSULTANTS  
7711 WATERBURY PLANTATION  
BILLYBORO, VA 22826  
T: 540-335-1111 F: 540-335-1112



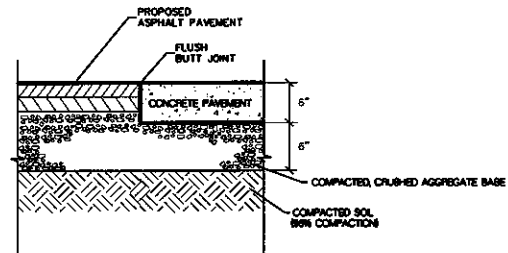
1 HIGH SIDE CONCRETE CURB DETAIL  
NOT TO SCALE



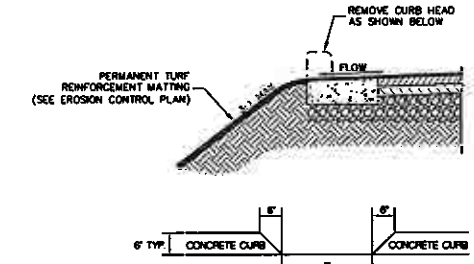
2 LOW SIDE CONCRETE CURB DETAIL  
NOT TO SCALE



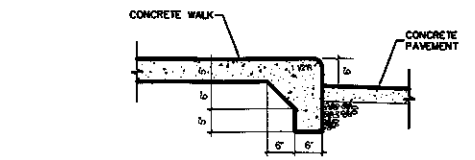
3 ASPHALT PAVEMENT DETAIL  
NOT TO SCALE



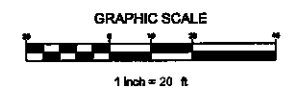
4 CONCRETE PAVEMENT DETAIL  
NOT TO SCALE



5 CURB CUT DETAIL  
NOT TO SCALE



6 CONCRETE WALK WITH INTEGRAL CURB  
NOT TO SCALE



ISSUED FOR CONSTRUCTION

SITE PAVING PLAN  
**NAPA AUTO PARTS**  
**WEST GOOD HOPE ROAD**  
CITY OF MILWAUKEE, WI

DRAWN BY: N.G.K.  
CHECKED BY: M.A.B.  
DATE: 06/22/06  
JOB NUMBER: C06022R5

**C5.0**  
SHEET 6 OF 7



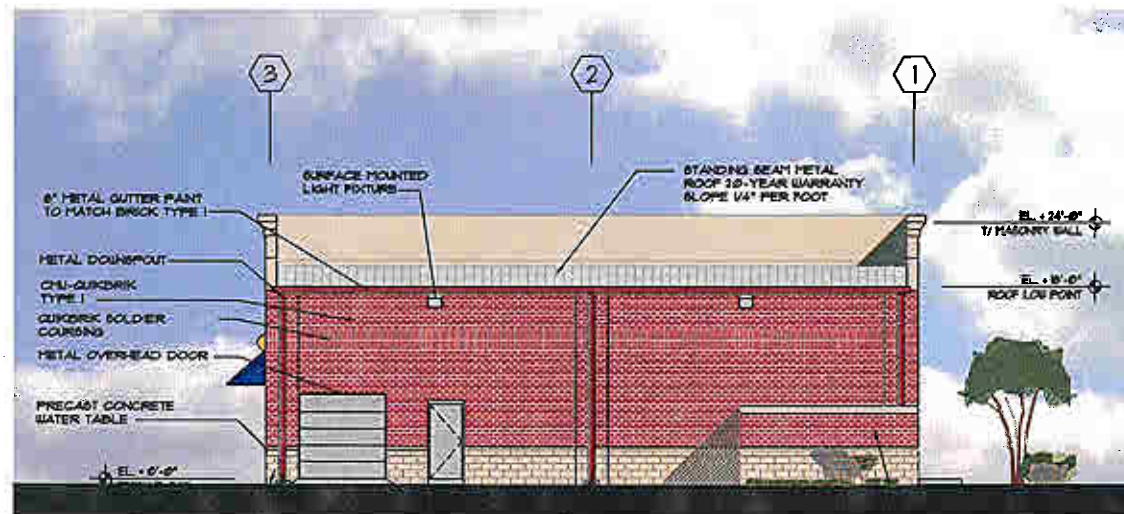




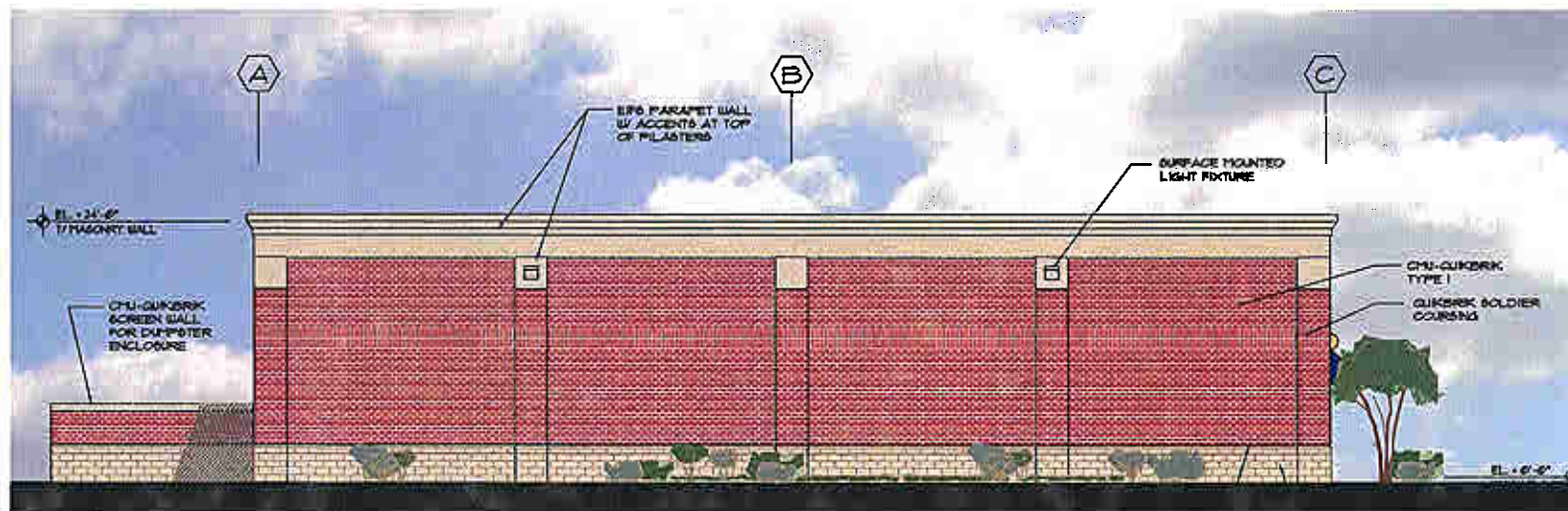
**FRONT ELEVATION**  
SCALE: 1/8"=1'-0"



**SIDE ELEVATION**  
SCALE: 1/8"=1'-0"



**REAR ELEVATION**  
SCALE: 1/8"=1'-0"



**SIDE ELEVATION**  
SCALE: 1/8"=1'-0"

**MATERIAL SPECIFICATIONS:**  
 CMU-QUIKBRICK  
 EIFS - DRYVIT / SANDPEBBLE FINE- AMARILLO WHITE #15  
 CMU- SPLIT FACE 8" X 16", PAINTED TO MATCH EIFS.  
 CONCRETE WATER TABLE-PATD. TO MATCH EIFS.



**OSWELL + NITISHIN**  
 ARCHITECTURE  
 LAND DEVELOPMENT  
 1234 POWERS FERRY COMMONS  
 SUITE 105  
 MARIETTA, GEORGIA 30067  
 770/ 956-8879 TELEPHONE  
 770/ 956-8931 FACSIMILE

THIS DRAWING IS AN INSTRUMENT OF SERVICE AND REMAINS THE PROPERTY OF OSWELL AND NITISHIN ARCHITECTS, P.C.

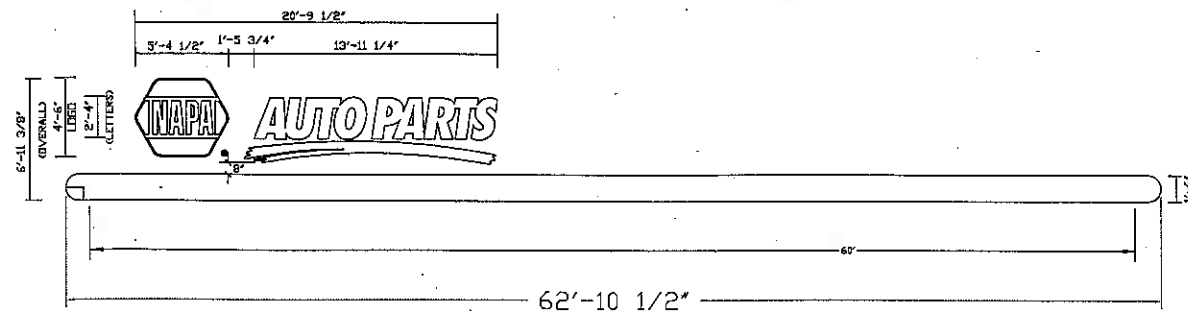
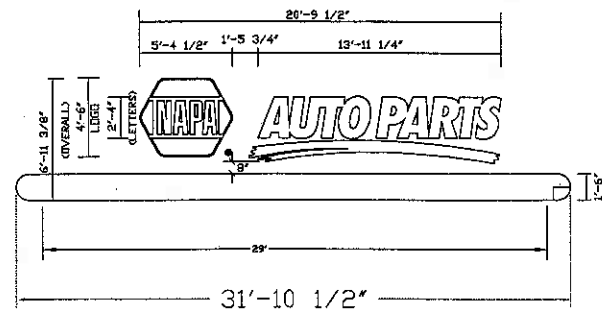
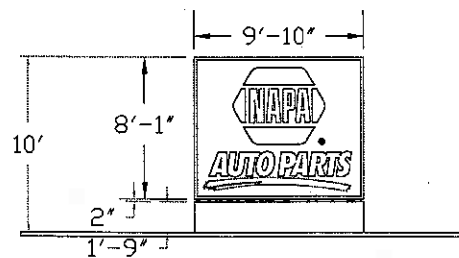
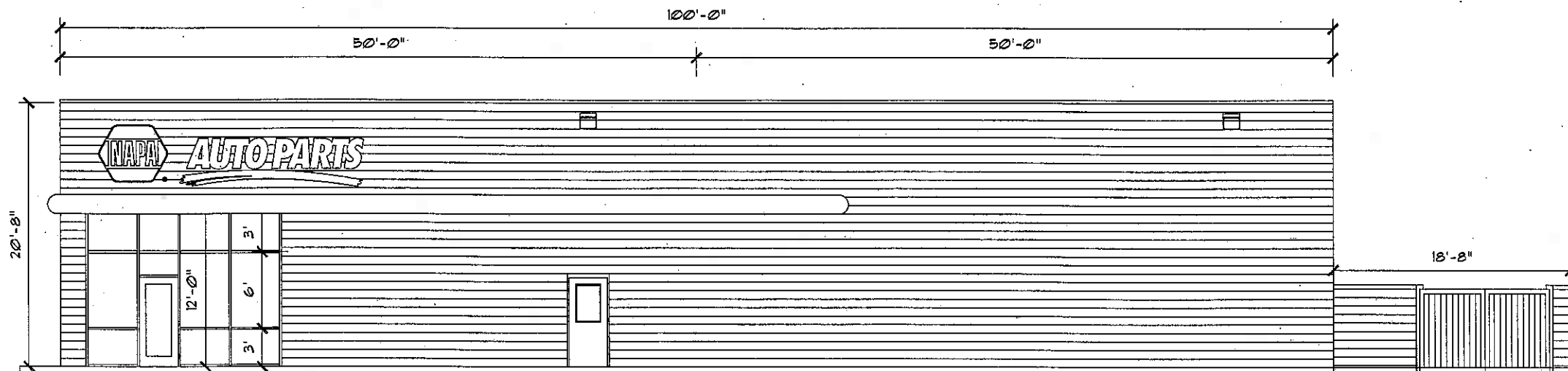
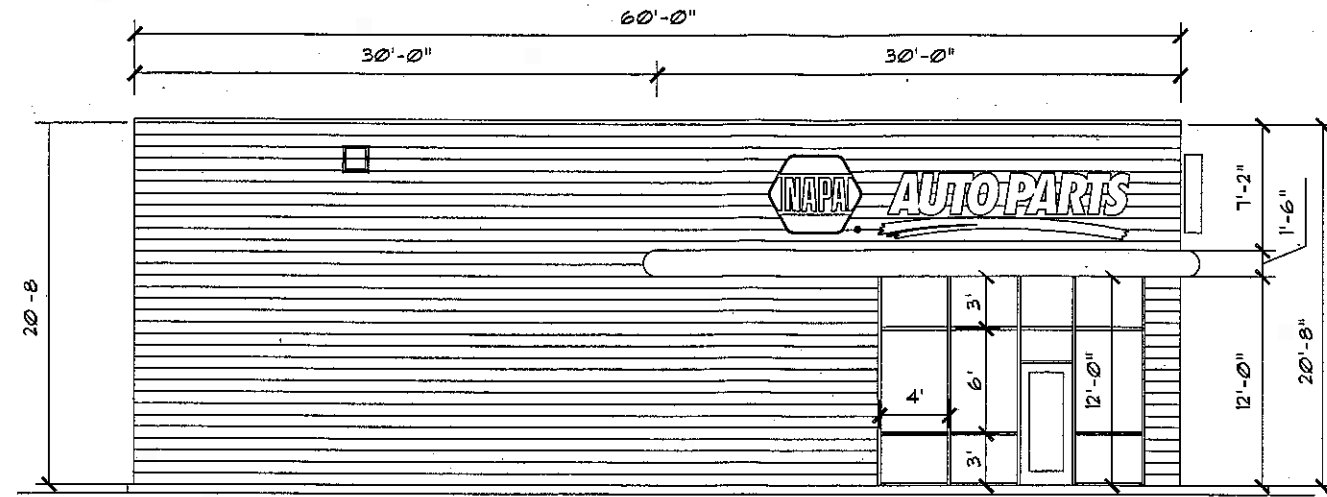
**AUTO PARTS**  
 GENUINE PARTS COMPANY  
 222 CHASTAIN MEADOWS COURT  
 SUITE 200  
 KENNESAW, GA 30144

**NAPA AUTO PARTS STORE**  
 MILWAUKEE, WISCONSIN

ORIGINAL ISSUE DATE: 11/2006  
 REVISIONS  
 1  
 2  
 3  
 4  
 5

EXTERIOR ELEVATIONS  
 Project Number 20060010  
**ELEV.**

FRONT ELEVATION  
SCALE: 3/32"=1'-0"



**FAIRMONT**  
Sign Company  
3750 E. OUTER DR., DETROIT, MI 48234  
PHONE: 313-368-4000 FAX: 313-368-1649

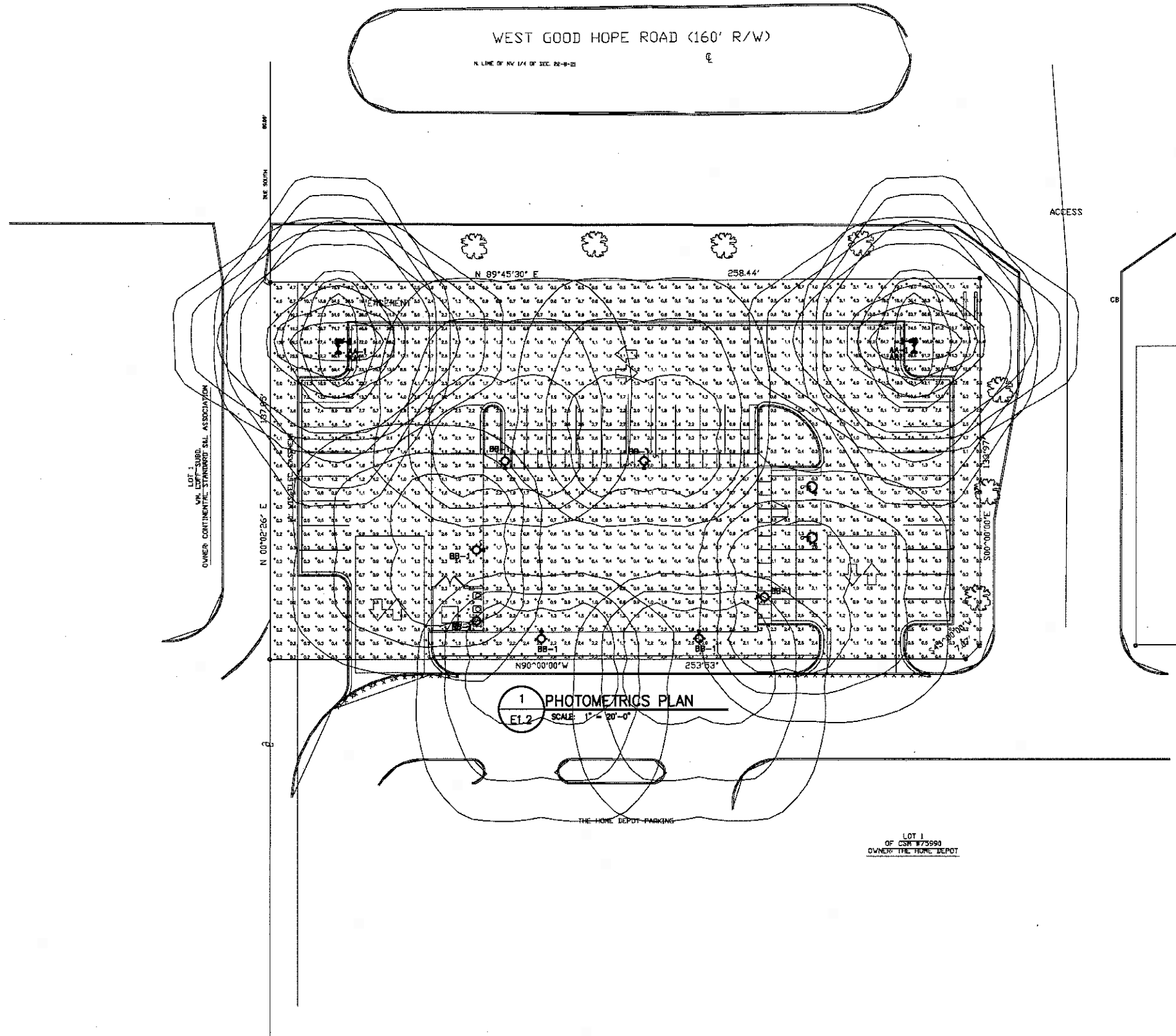
CUSTOMER APPROVAL	DATE	DATE	REVISION	INIT

This is an original unpublished drawing, created by F.S.C. It is submitted for your use in connection with a project being planned for you by F.S.C. It is not to be shown, copied, reproduced, or exhibited in any fashion without the express written approval by F.S.C. © FAIRMONT SIGN COMPANY, 2002

CUSTOMER/LOGO  
**NAPA AUTO PARTS**  
ADDRESS 7455 WEST GOOD HOPE ROAD  
CITY, STATE MILWAUKEE, WI 53233 MI

DWG TITLE: ELEVATION  
DESCRIPTION: P-LINE WALL SIGNS + MONUMENT SIGN  
FILE NAME: NAPA\ELEV\40-44\41-003 B  
BLOCK NAME:

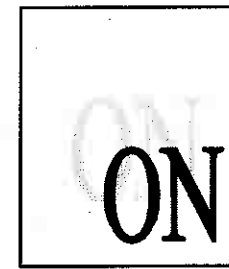
WO#:   
DATE: 10/31/06  
DRAWN BY: DMF  
SHEET #: 1 OF # 1



WEST GOOD HOPE ROAD (160' R/W)  
N. LINE OF N. 1/4 OF SEC. 22-4-22

1 PHOTOMETRICS PLAN  
 EL.2 SCALE: 1" = 20'-0"

LOT 1  
 OF CS# 873590  
 OWNER: THE HOME DEPOT



OSWELL + NITISHIN  
 ARCHITECTURE  
 LAND DEVELOPMENT  
 1234 POWERS FERRY COMMONS  
 SUITE 105  
 MARIETTA, GEORGIA 30067  
 770/956-8879 TELEPHONE  
 770/956-8931 FACSIMILE

THIS DRAWING IS AN INSTRUMENT OF SERVICE AND REMAINS THE PROPERTY OF OSWELL AND NITISHIN ARCHITECTS, P.C.



GENUINE PARTS COMPANY  
 222 CHASTAIN MEADOWS COURT  
 SUITE 200  
 KENNESAW, GA 30144



NAPA AUTO PARTS  
 STORE  
 W. GOOD HOPE ROAD AND N. 76TH STREET  
 MILWAUKEE, WI

McVEIGH & MANGUM  
 ENGINEERING INC  
240 Inwood North Highway, Suite 300  
 Atlanta, Georgia 30329  
 Tel: (404) 525-1418, Fax: (404) 525-1417  
 EMail: mveigh@mcveighmangum.com  
 Lic. of Professional Engineer - License No. 3339

ORIGINAL ISSUE DATE: 08/08/06  
 REVISIONS  
 1  
 2  
 3  
 4  
 5

PHOTOMETRICS PLAN  
 Project Number 20060010  
**E1.2**