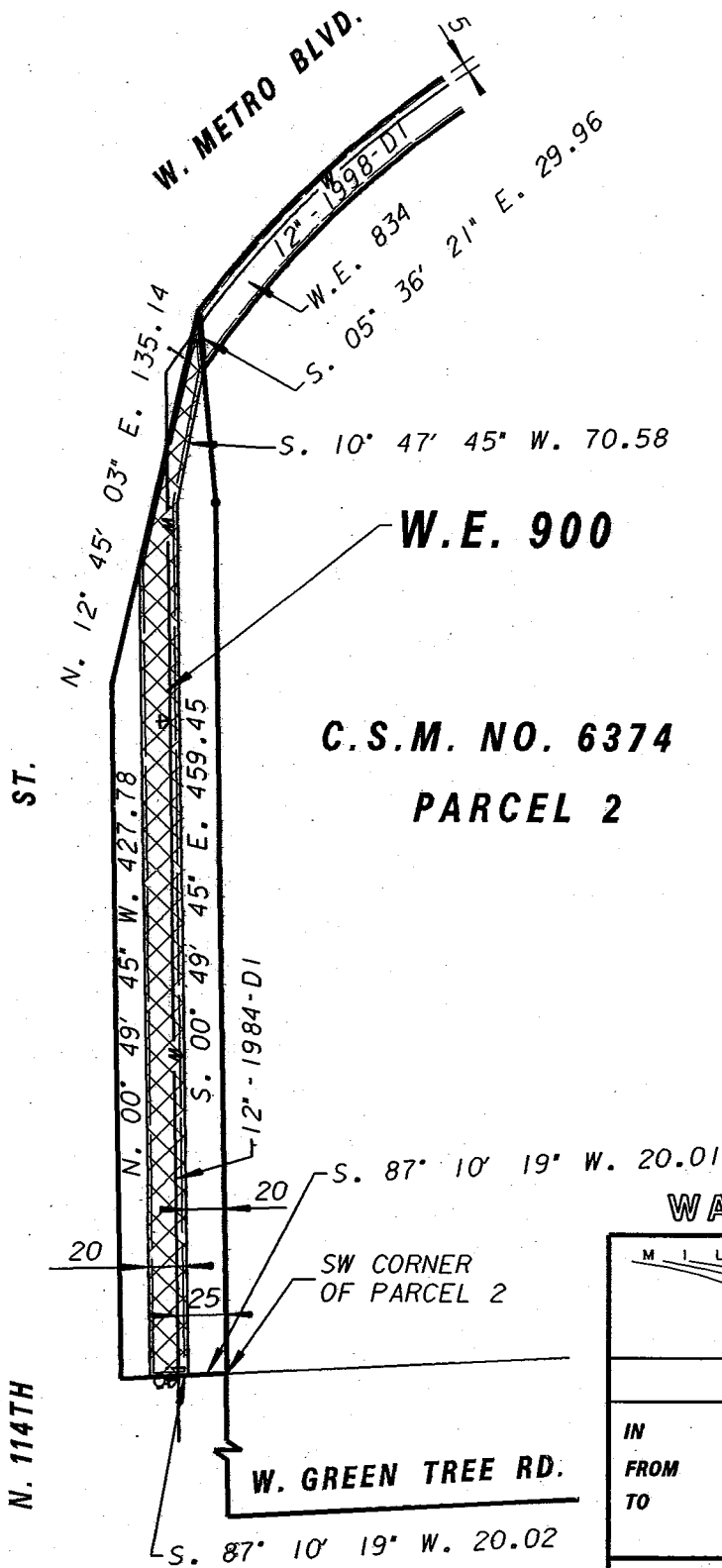


N.E. 1/4 OF SEC. 19, T.8N., R.21E.



**C.S.M. NO. 6374
PARCEL 2**

WATER EASEMENT W.E. 900

MILWAUKEE Water Engineering
Department of Public Works
Milwaukee, Wisconsin

WATER EASEMENT
IN VACATED N. 114TH ST.
FROM 350' NORTH OF W. GREEN TREE RD.
TO W. METRO BLVD

SCALE	1" = 100
1/4 SEC. NO.	114
PLAN DATE	4-3-02
DRAWN BY	
CHECKED BY	P.W.P.
REVIEWED BY	
WORK ORDER	0232

APPROVED DATE
Michael J. Spill 4-4-02
MAINS DESIGN ENGINEER
David G. Gant 4-8-02
CHIEF DESIGN ENGINEER
Chilews 4-8-02
SPECIAL DEPUTY COMMISSIONER OF PUBLIC WORKS

SHEET NO. 1 OF 1 PLAN FILE NO. WE900