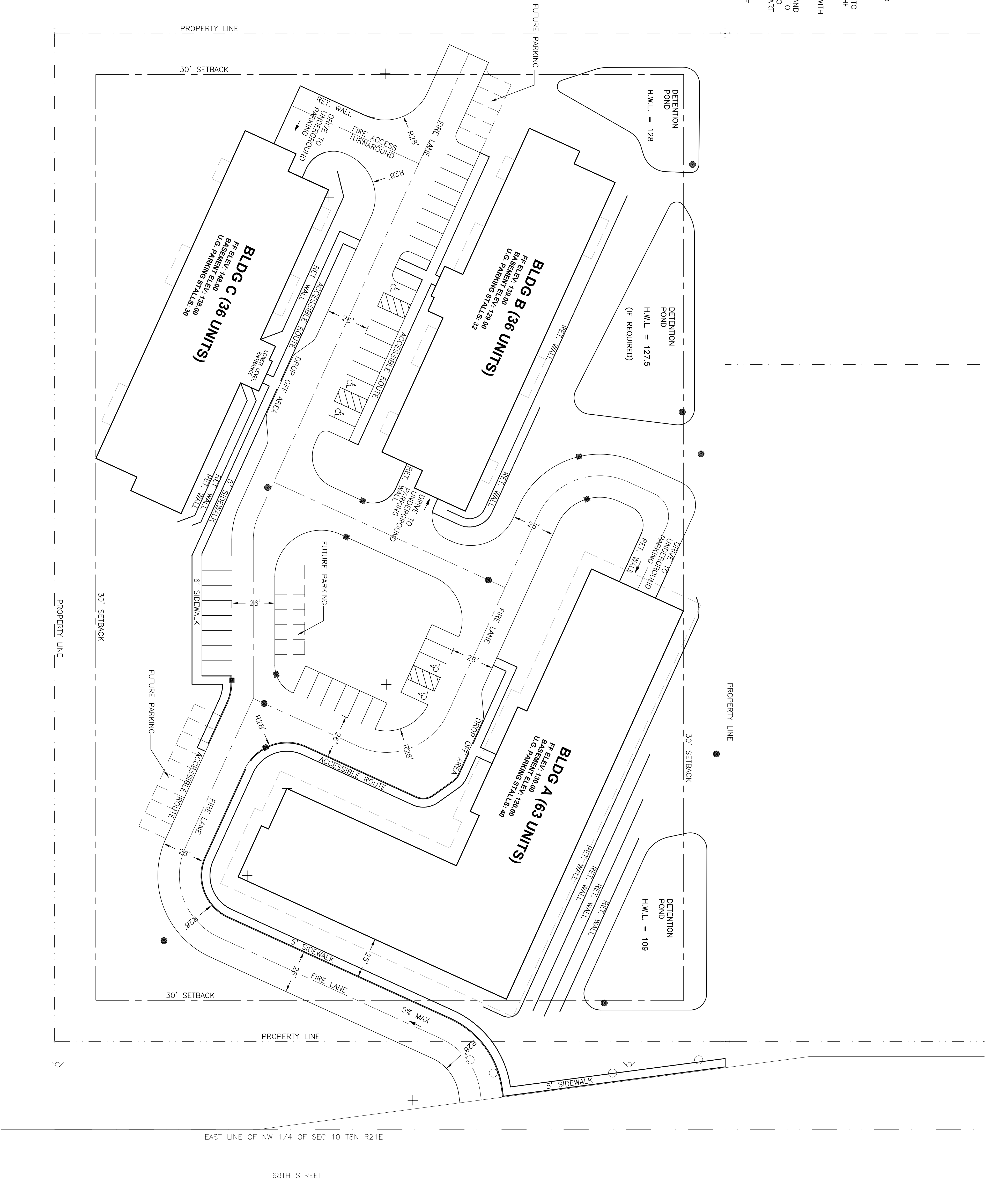


GENERAL NOTES

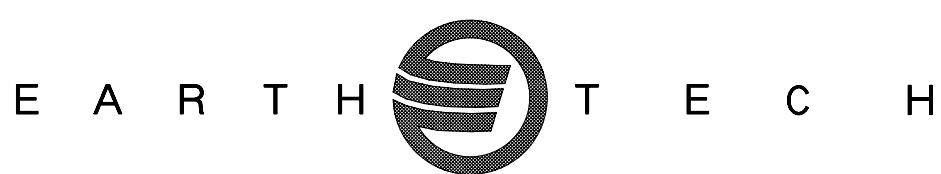
1. DIMENSIONS TAKE PRECEDENCE OVER SCALE. CONTRACTOR TO VERIFY ALL DIMENSIONS IN FIELD.
2. REFER TO ARCHITECT'S SPECIFICATIONS FOR ASPHALT PAVEMENT.
3. RESTORATION OF EXISTING IMPROVEMENTS IS CONSIDERED INCIDENTAL AND SHALL BE PART OF THE COST OF THE UNDERGROUND CONSTRUCTION AND SHALL INCLUDE CURB & GUTTER, PAVING, SIDEWALK, TOPSOIL, FERTILIZER SEEDING AND MULCHING.
4. THE PROPOSED IMPROVEMENTS SHALL BE CONSTRUCTED IN ACCORDANCE TO THE ORDINANCES AND REQUIREMENTS OF THE CITY OF MILWAUKEE AND THE STATE OF WISCONSIN DODM AND DNR REQUIREMENTS.
5. THE PROPOSED IMPROVEMENTS MUST BE CONSTRUCTED IN ACCORDANCE WITH ENGINEERING PLANS AS APPROVED BY THE CITY OF MILWAUKEE.
6. THE CONTRACTOR IS RESPONSIBLE FOR EXAMINING ALL SITE CONDITIONS AND COMMENCEMENT OF CONSTRUCTION AND IS TO UTILITY ELEVATIONS PRIOR TO THOSE INDICATED ON THE ENGINEERING COMPARE THE SITE CONDITIONS TO DRAWINGS. ANY DISCREPANCIES ARE TO BE RESOLVED PRIOR TO THE START OF CONSTRUCTION.
7. CONTRACTOR IS RESPONSIBLE FOR SITE SAFETY DURING CONSTRUCTION OF IMPROVEMENTS.



PRELIMINARY

HORIZON DEVELOPMENT GROUP
MILWAUKEE, WISCONSIN
GRANVILLE HEIGHTS

SITE PLAN



SHEBOYGAN, WISCONSIN			
DRN	JER	DEC, 2003	
DES	SJK	DEC, 2003	
CHK		DEC, 2003	
APP	TRJ	DEC, 2003	

NO	REVISIONS	DRN	CHK	DATE

DATE	DECEMBER 2003
PROJECT NO	73074
FILE	02C01.DWG
SHEET NO	---
DRAWING NO	C1