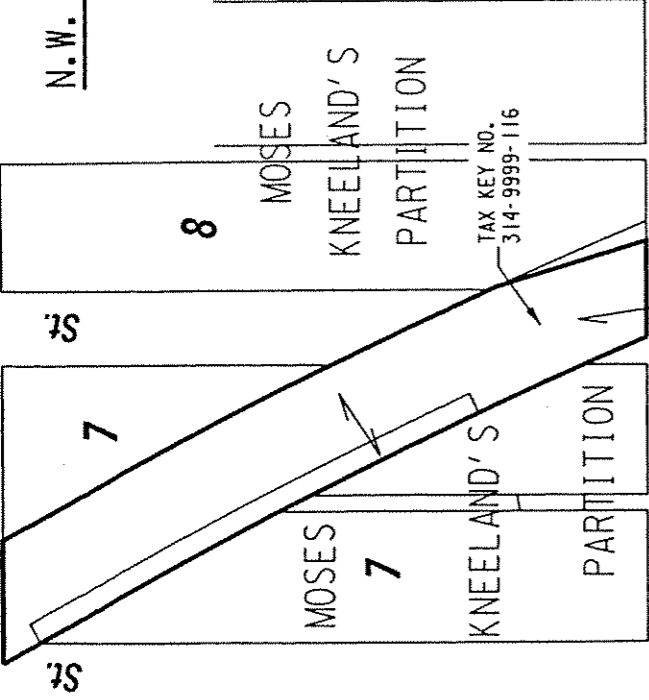


E. Burreigh St.

St.



314

N.W. 1/4 SEC. 16, T.7N., R.22E.

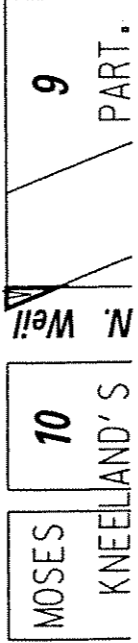
Blvd.

TAX KEY NO.  
314-9999-116

N. Bremen

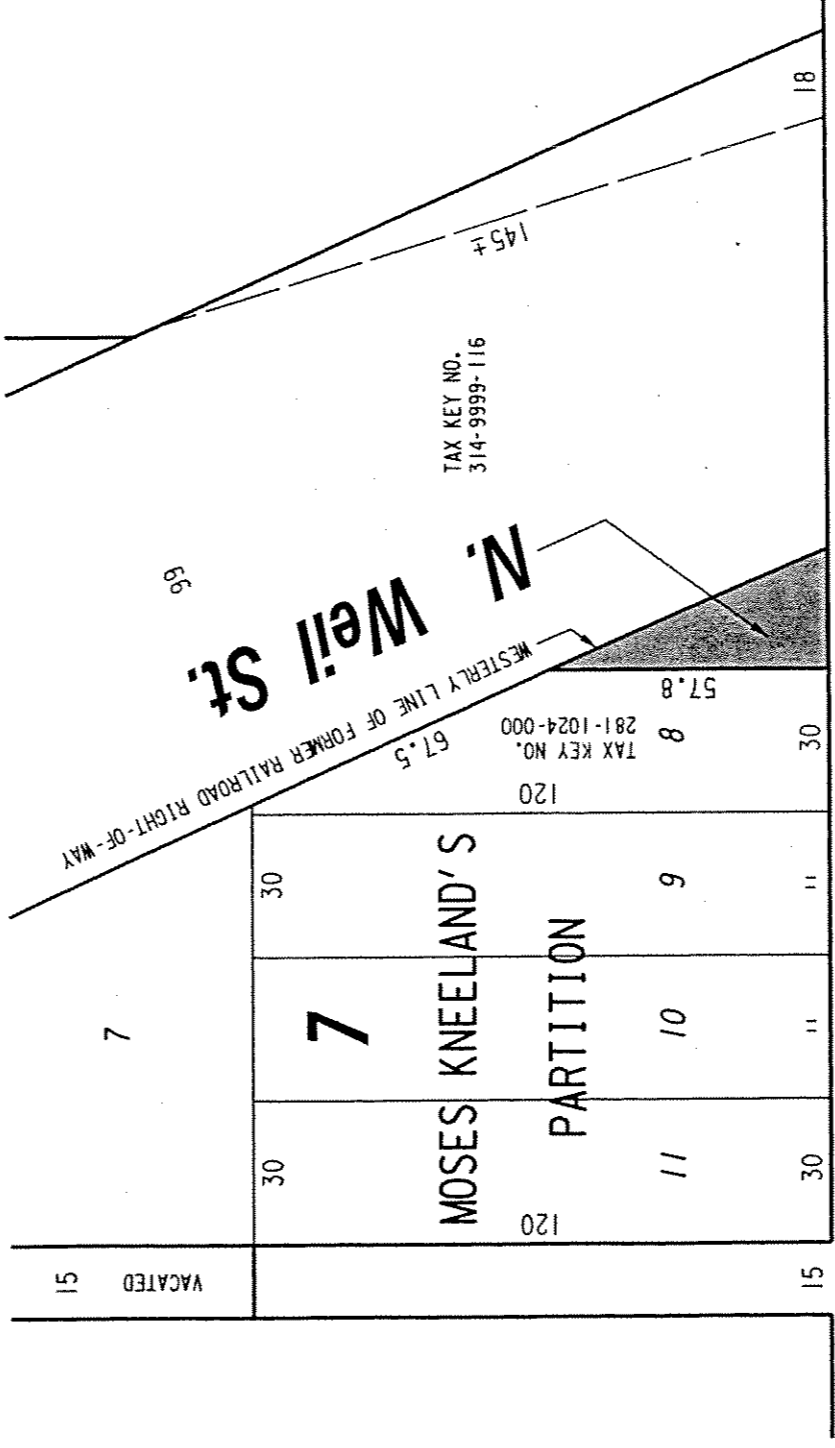
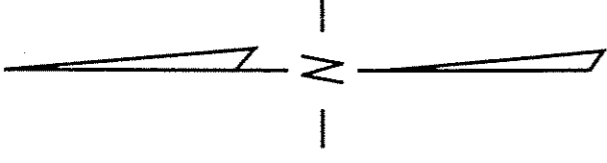
E. Chambers

St.



N. Weil St.

N. Humboldt



WESTERLY LINE OF FORMER RAILROAD RIGHT-OF-WAY

69

TAX KEY NO.  
314-9999-116

TAX KEY NO.  
281-1024-000

145+

E. Chambers

(60' R.O.W.)

St.



PORTION OF PUBLIC STREET PROPOSED TO BE VACATED

EXHIBIT "A"  
FILE NO. 030447

INFRASTRUCTURE SERVICES DIVISION

MILWAUKEE, WISCONSIN

ASSIGNED TO: W.E. FUCHS  
DRAWN BY: W.E.F.

CH'K'D. BY: W.E. FUCHS  
DATE: FEB. 11, 2004

PROJECT/GRANT NO.: WK52337187

SCALE: 1" = 40'

APPROVED BY:

*Marcia Lindholm*  
CENTRAL DRAFTING & RECORDS MANAGER

*W. E. Fuchs*  
CIVIL ENGINEER