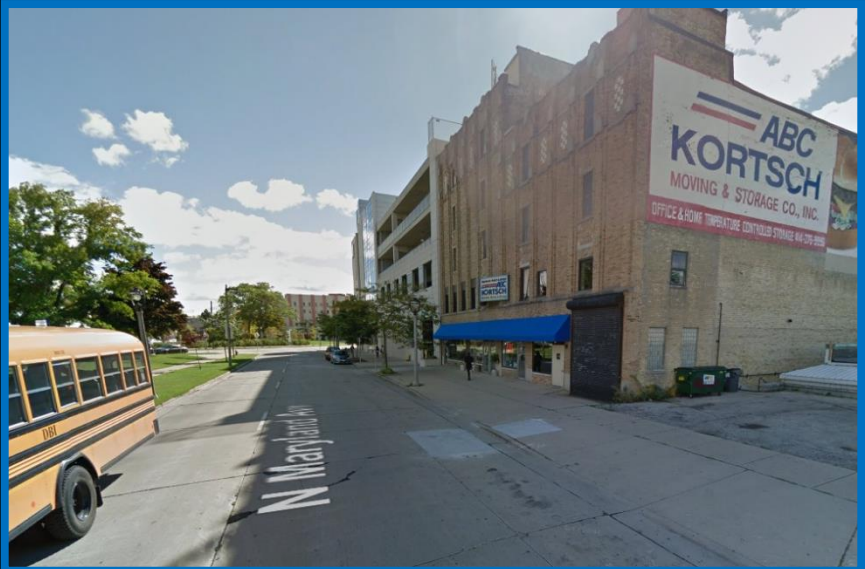
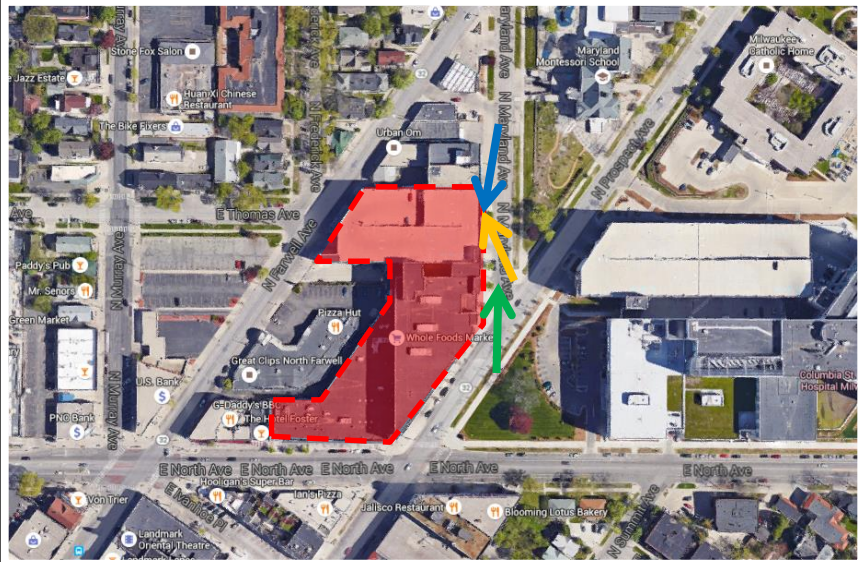


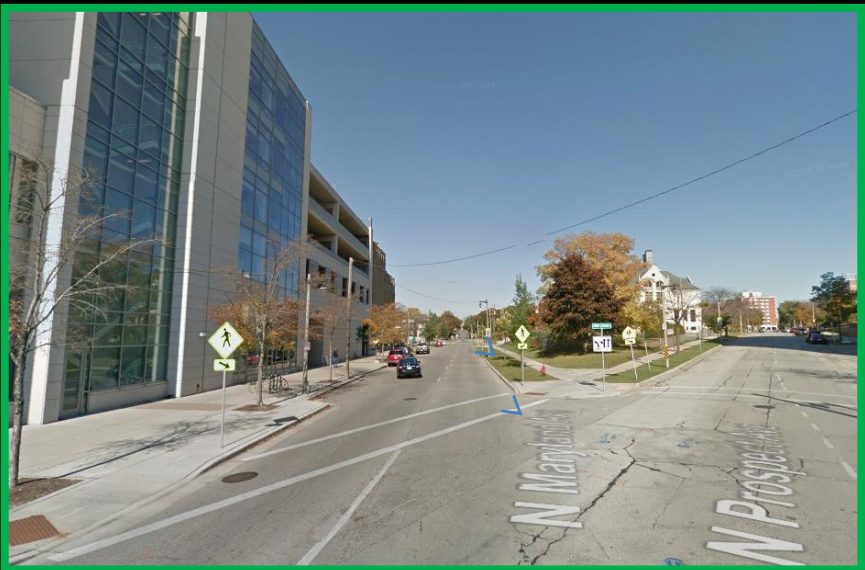
File No. 151884. Substitute resolution relating to a Minor Modification to the Detailed Planned Development known as Columbia St. Mary's Prospect West, Phase 1, to permit additional signage for the Medical Commons parking structure at 2311 North Prospect Avenue, located on the north side of East North Avenue, west of North Prospect Avenue, in the 3rd Aldermanic District.



File No. 151884. Site Context Photos.



View from North Maryland Avenue, looking south



View from North Prospect Avenue and North Maryland Avenue



View from North Maryland Avenue, looking north

D/F PARKING SIGN W/ EMCs

(1) Req'd @ East Elevation 3/4" = 1'-0" SCALE

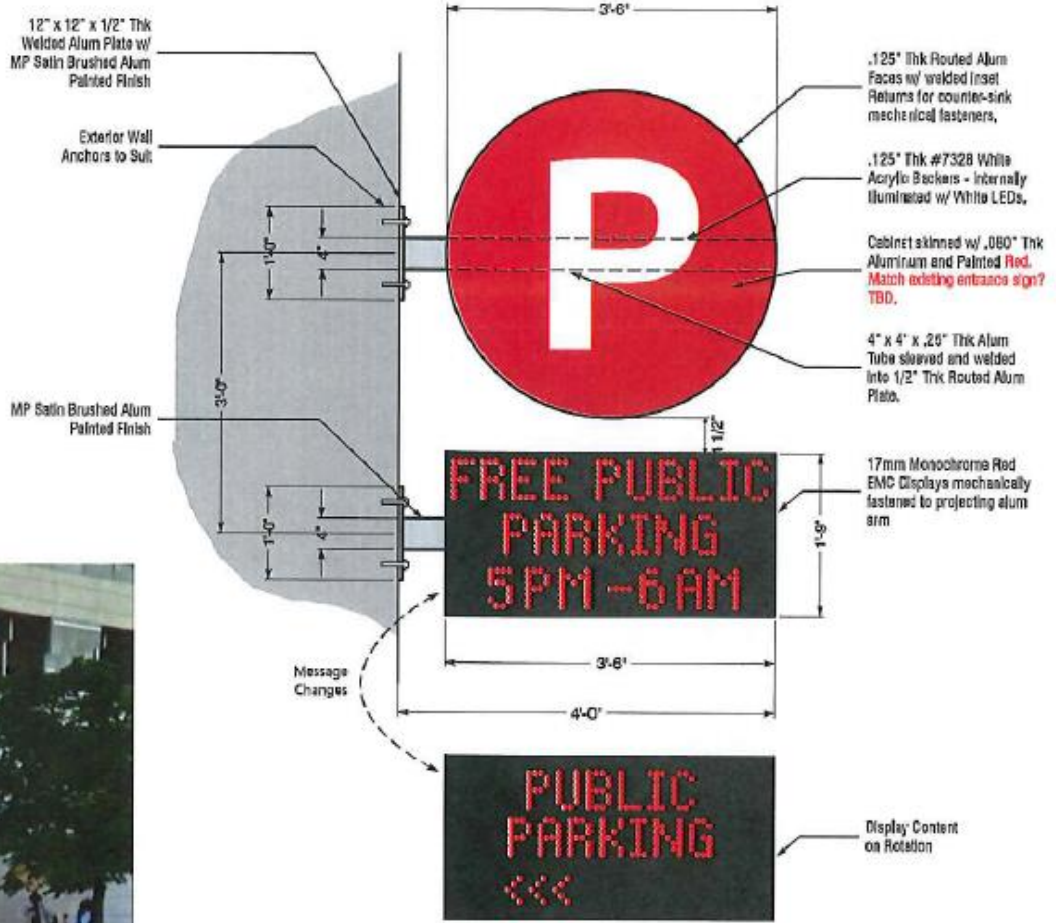
D/F Circular "P" Parking Sign formed from .125" Thk Routed Alum Faces backed w/ .125" Thk #7328 White Acrylic. Cabinet skinned w/ .080 Alum and painted to match Red on existing sign over garage on N.E. Elevation (Prospect garage entrance) TBD. Faces are illuminated w/ White LEDs.

Projecting Alum Tube is 4" x 4" x .25" Thk Aluminum slotted/welded into a .50" Thk Routed Alum Base painted MAP Satin Brushed Aluminum.

(2) Electronic Message Centers to be 17mm monochrome Red, 32 pixels x 64 pixels wide. Case Dimensions: 1'9" x 3'6" x 9.875" to be mechanically fastened to projecting 4" x 4" x .25" Thk Alum Tube.

120V Primary Electrical Connection to Existing Power Source and Hook-up by Locally Licensed Electrician.

 Red TBD / Match to existing entrance sign?



NOTE:
 The programmable text will show the agreed upon hours available for public parking of 7pm to 3am on weekdays (Monday through Friday) and 3pm to 3am on weekends (Saturday and Sunday). The text shown on the sign above is for design purposes only.