

## 24-Hour Library



EnvisionWare creates solutions that deliver the maximum return on your investment. These systems are fast, friendly, efficient, loaded with functionality, and they work hard to deliver library services to patrons 8,760 hours per year (24x7). The EnvisionWare 24-Hour Library represents a major advancement in the delivery of public service.

### What can the 24-Hour Library do for your patrons?

The EnvisionWare 24-Hour Library delivers<sup>1</sup>:

- 24-Hour browsing of the stacks
- 24-Hour OPAC browsing
- 24-Hour browsing on-screen
- 24-Hour program information
- 24-Hour checkout
- 24-Hour reserve selection
- 24-Hour check-in
- 24-Hour patron registration
- 24-Hour holds pickup
- 24-Hour sorting

In today's service-oriented society, with 24-hour drive-throughs at banks, fast food restaurants and markets, wouldn't it be great to keep pace with library services?

### Where can you install a 24-Hour Library?

These systems are built for security, extreme weather, and for at-library and remote installation at:

- City parks
- Near fast food restaurants, banks and other retailers
- Senior centers
- City hall, government facilities
- Metro and bus stations, airports
- Outside your library for 24-hour holds pickup
- Schools and universities
- Malls

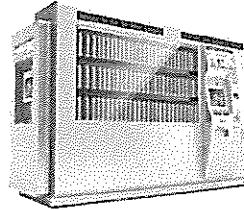
Have you avoided discussions about a bookmobile because of the operating cost or liability risks? Imagine delivering 24-hour services to your remote communities instead of a few hours a week or month.

<sup>1</sup> Features supported are a function of your choice of ILS integration and vendor

## 24-Hour Library

### Options:

- Project management, installation and training
- Construction management
- Barcode item detection; RFID patron card detection
- Magnetic stripe patron card support
- 24-Hour Library Remote Monitoring Console
- Multi-link mobile connectivity
- API integration
- On-site maintenance after first year
- Specialized structures, canopies and location elements
- Cooling and heating systems for extreme temperatures
- Uninterruptible power supply
- Card payment terminal
- PC Reservation® client
- Wi-Fi router



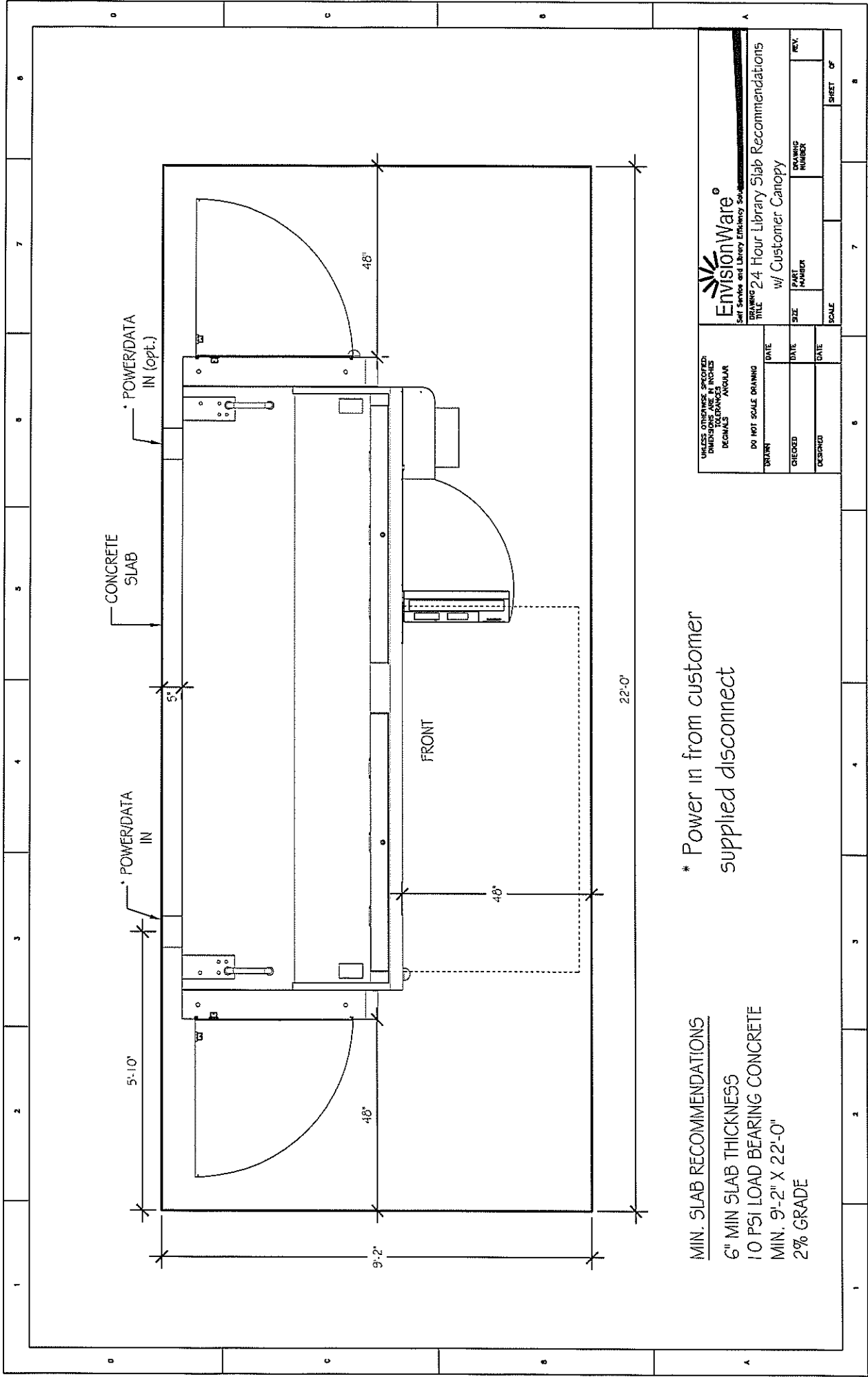
Items on Shelves	402
Items in Special Holds Drawers	10 @ 7.08"d x 2.55"w x 9.44"h (180mm x 65mm x 240mm) 7 @ 9.96"d x 0.98"w x 13.77"h (253mm x 25mm x 350mm)
Sorter Return Bins	14
Return Capacity	1000
Reshelving	No
Primary Interface	17" industrial color touch screen plus numeric touchpad
OPAC Display	17" display with kiosk keyboard and mouse
Program Display	32" touch screen
Cameras	2
Voltage	120 VAC @ 20A
Physical (Imperial)	5.31'd x 14.11'w Height: 8.88'
Physical (Metric)	1620mm x 4300mm Height: 2706mm
Weight	5000 lbs.
Connectivity	RJ-45
ILS Integration	SIP2 or NCIP
Included	Hardware, software, displays, receipt printer, RFID item detection, barcode patron detection, freight to US library

Serving Over  
**10,000 Libraries**  
Around the World...

With a deep commitment to customer service and satisfaction, and an extensive line of self-service and efficiency solutions, it's no wonder over 10,000 libraries around the globe rely on EnvisionWare. From self-service circulation to public computer and print management, to RFID, EnvisionWare services more libraries with more self-service and efficiency solutions — with a commitment to libraries that is second to none. Visit us at


[envisionware.com](http://envisionware.com).

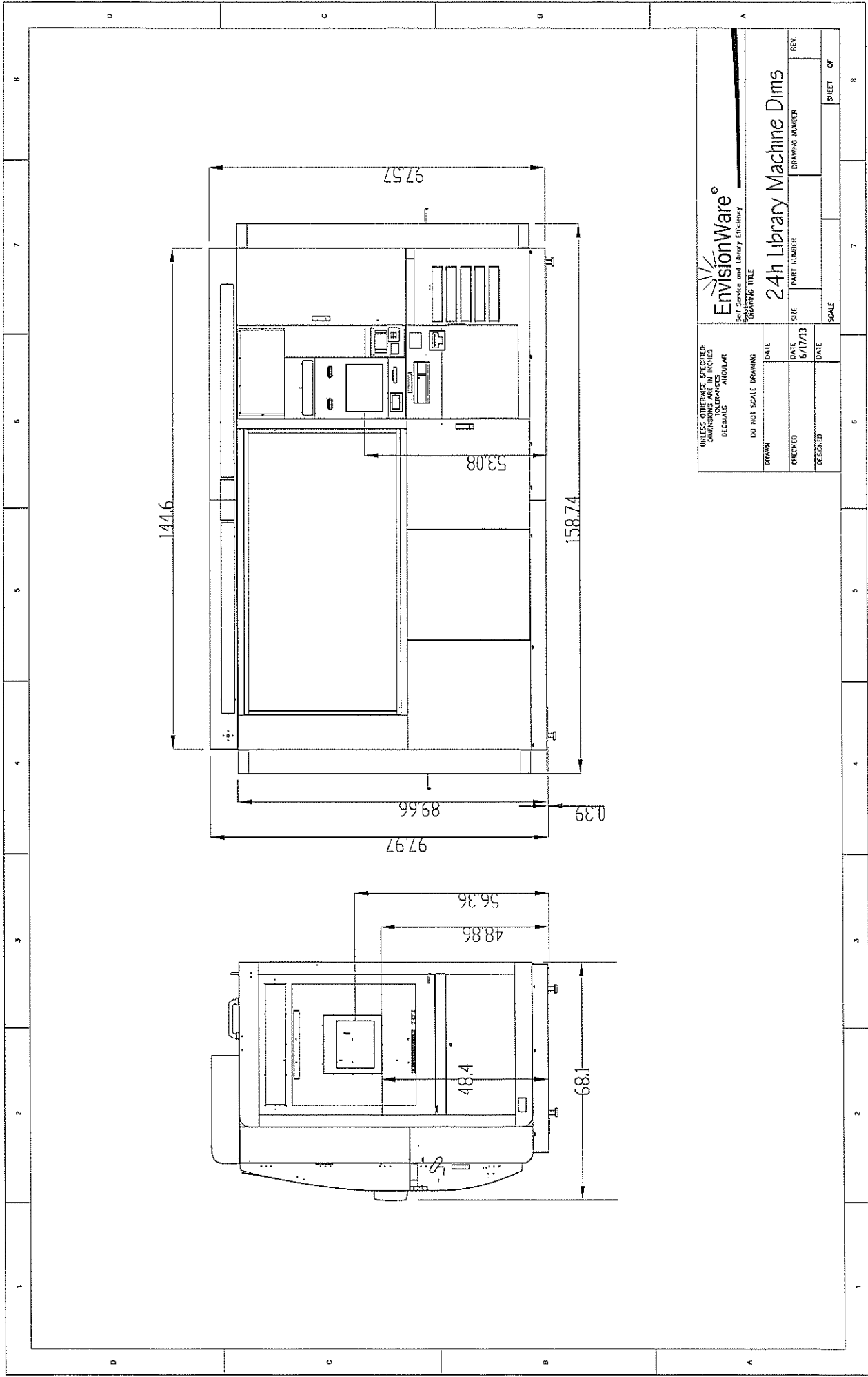
**EnvisionWare®**  
Self Service and Library Efficiency Solutions



\* Power in from customer  
supplied disconnect

MIN. SLAB RECOMMENDATIONS  
 6" MIN SLAB THICKNESS  
 10 PSI LOAD BEARING CONCRETE  
 MIN. 9'-2" X 22'-0"  
 2% GRADE

UNLESS OTHERWISE SPECIFIED: DIMENSIONS ARE IN FEET AND INCHES DECIMALS = ANGULAR		 <b>EnvisionWare</b> <sup>®</sup> Self Service and Library Efficiency Solutions	
DO NOT SCALE DRAWING		DRAWING TITLE: 24 Hour Library Slab Recommendations	
DRAWN	DATE	SIZE	PART NUMBER
CHECKED	DATE	DRAWING NUMBER	REV.
DESIGNED	DATE	SCALE	SHEET OF



EnvisionWare<sup>®</sup>  
Self Service and Library Efficiency

24h Library Machine Dims

UNLESS OTHERWISE SPECIFIED: DIMENSIONS ARE IN DECIMALS ANGIULAR		DRAWING TITLE	
DO NOT SCALE DRAWING	DATE	PART NUMBER	DRAWING NUMBER
DRAWN	DATE	SIZE	REN
CHECKED	DATE 6/17/13	SCALE	SHEET OF
DESIGNED	DATE		