

File No. 171044. A substitute ordinance relating to the change in zoning from Two-Family Residential, RT4, to Multi-Family Residential, RM4, to facilitate adaptive reuse of the former Phillis Wheatley Milwaukee Public Schools building into housing at 2442 North 20th Street, located in the block bounded by West Wright Street, North 19th Street, West Meinecke Avenue and North 20th Street, in the 15th Aldermanic District.



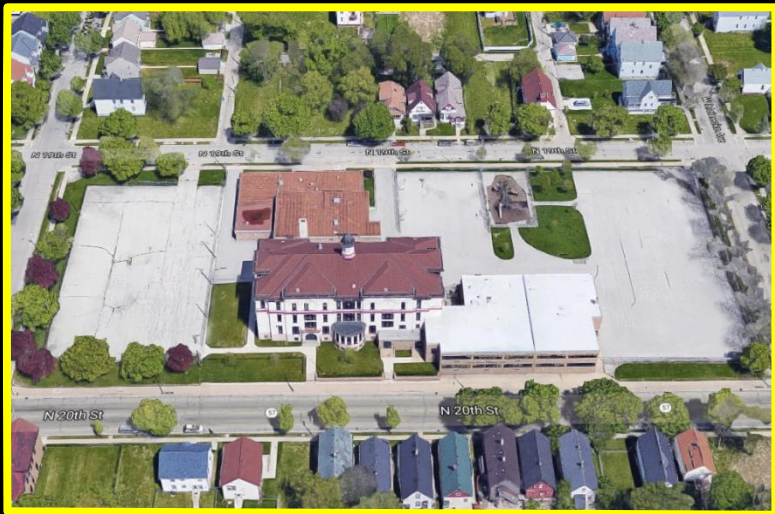
File No. 171044. Site Context Photos



View northwest from West Meinecke Ave and North 19th St



View south from West Wright St



Aerial View east from North 20th St

