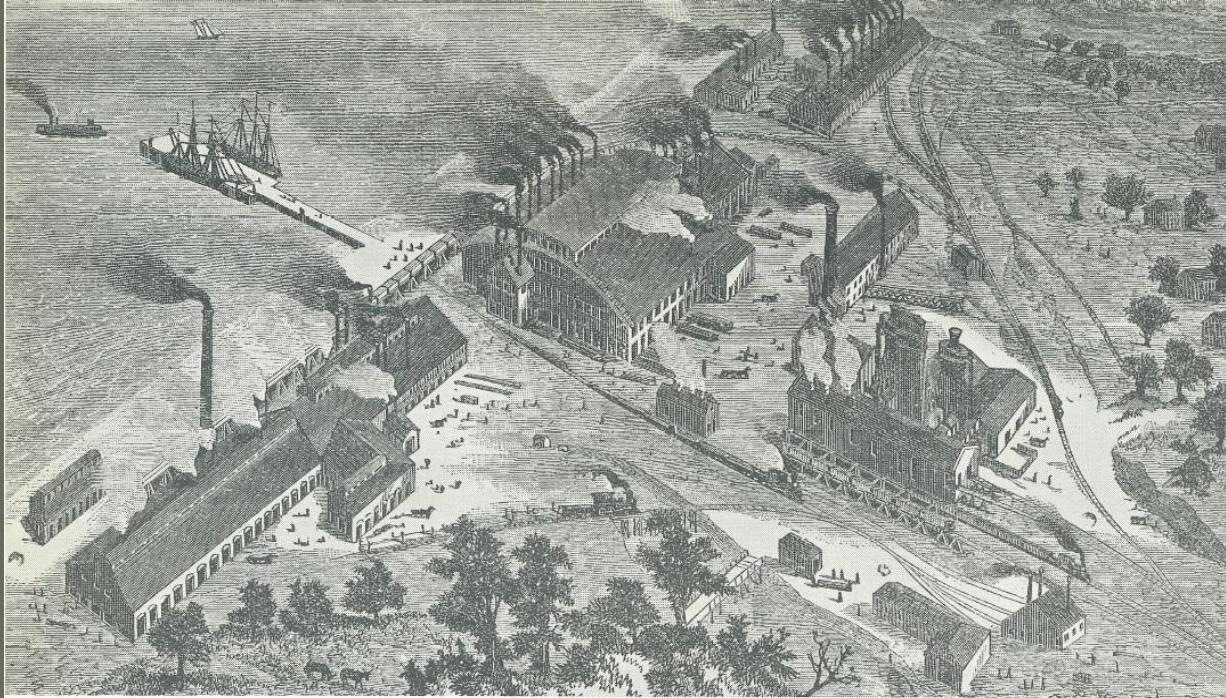




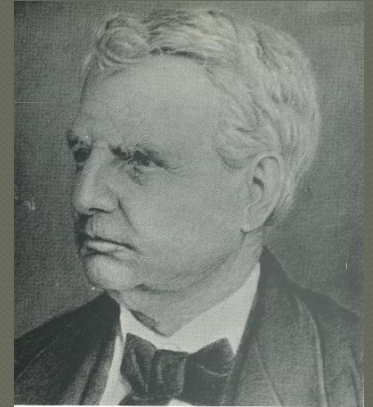
201378

Resolution relating to the Permanent Historic Designation of the South Superior St. Puddlers' Cottages Historic District on the east side of Superior St. between E. Russell Ave. and E. Ontario St. excluding 2538 S. Superior St. in the 14th Ald. District

Significance: History



*This unusual view of the Milwaukee Iron Company appeared in the September, 1876 issue of **The Milwaukeean**, a paper of commercial and business news.*



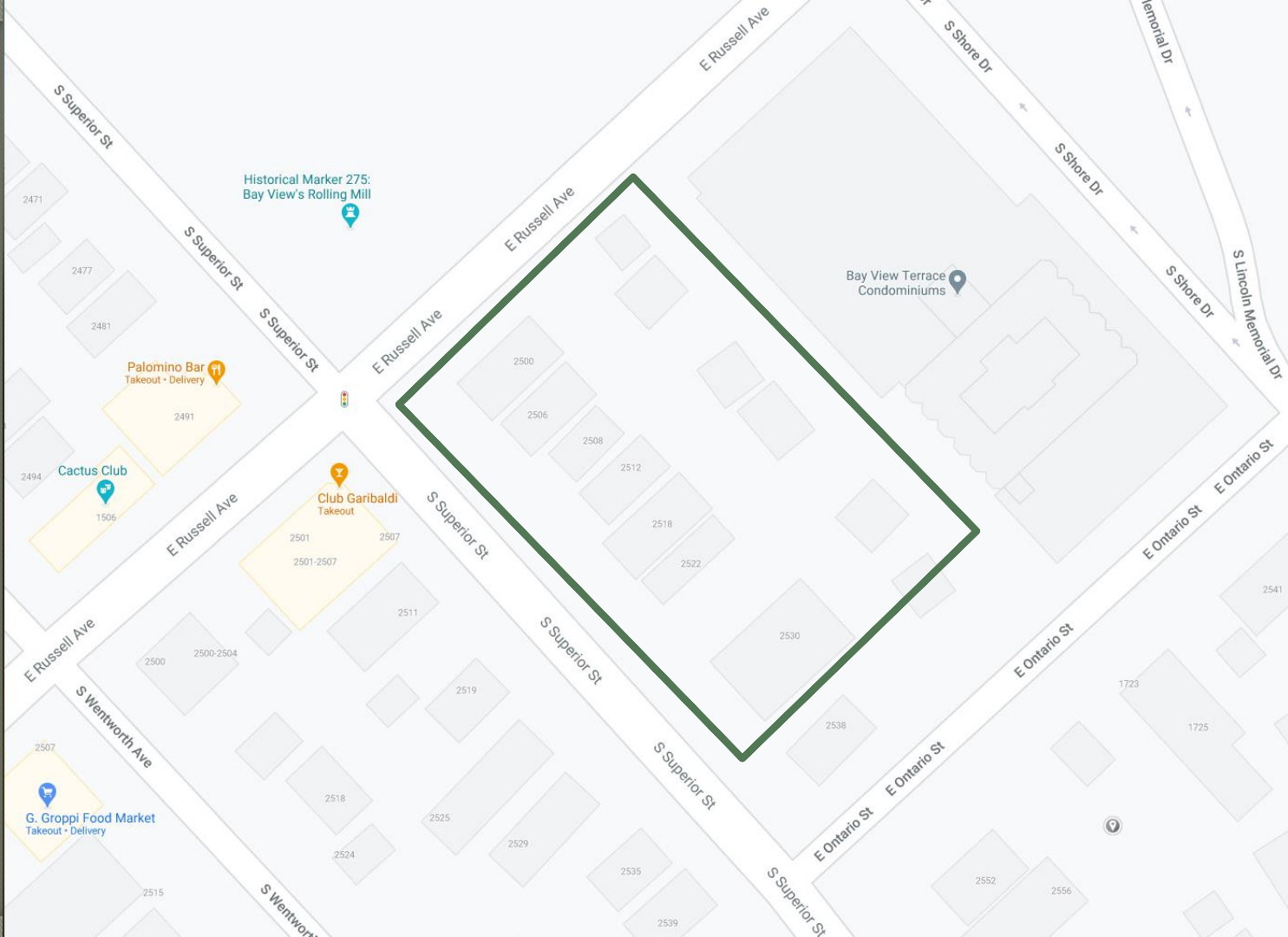
Eber Brock Ward, founder of the Milwaukee Iron Company

The Milwaukee Iron Company platted a subdivision for its workers



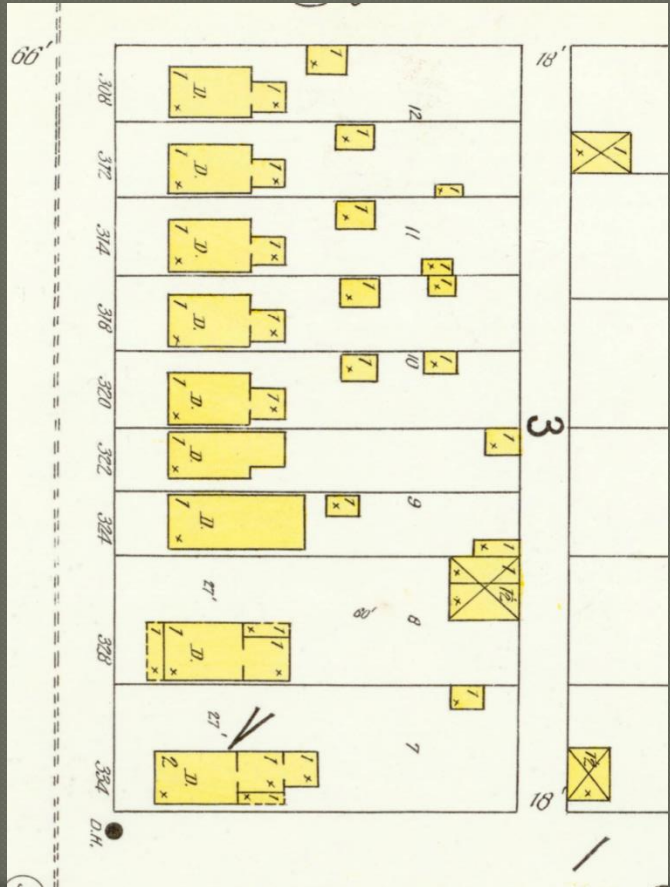
Superior Street



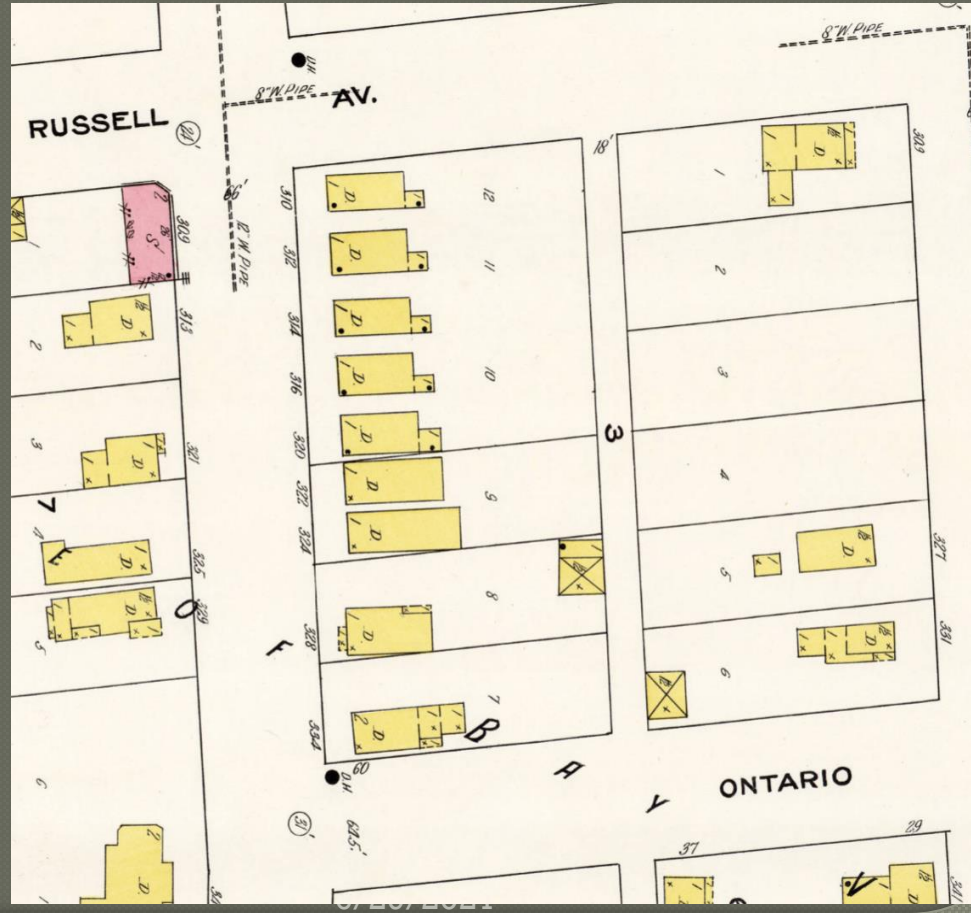




1894



1910



Milwaukee Iron
Company would have
been here





The Setting:
1982 photo of South Superior from the National
Register Nomination.



Same View, March 2021

6/29/2021



Cement Asbestos
siding added in 1950

Front porch enclosed
in 1977

Front porch roof
original

1990 survey photo of 2530 South Superior
before vinyl siding applied

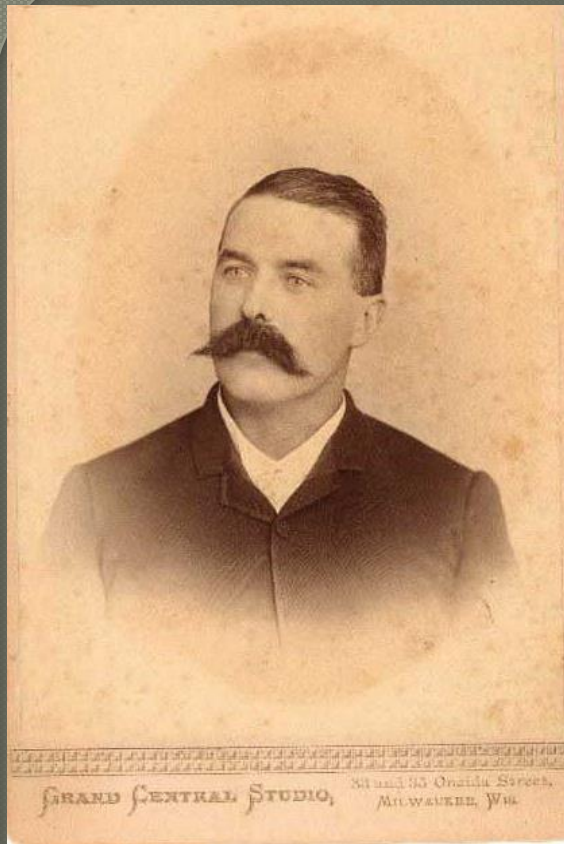


Google image of 2530 South Superior 2019.



Recent photos of the carriage barn. Joe Paterick photographer.





Horace C. Rising



We know Horace C. Rising had a barn during his ownership. Probate records inventory a buggy, a sulky, a road cart and a harness in his ownership.

John W. Morgan later rebuilt the barn in 1894



6/29/2021

Significance: Architecture, Property Type



A typical residential street in Bay View, 1904

This is NOT South Superior Street but shows prevalence of puddlers' cottages and what they originally looked like



South Superior looking south in 1982. Longest continuous row of puddlers' cottages in Bay View



6/29/2021

Recommendation

- e-1 Its exemplification of the development of the cultural, economic, social or historic heritage of the City of Milwaukee, State Of Wisconsin or of the United States
- e-5 Its embodiment of distinguishing characteristics of an architectural type or specimen
- e-8 Its relationship to other distinctive areas which are eligible for preservation according to a plan based on an historic, cultural, or architectural motif.



Brewers Hill
1988 v. 2009

