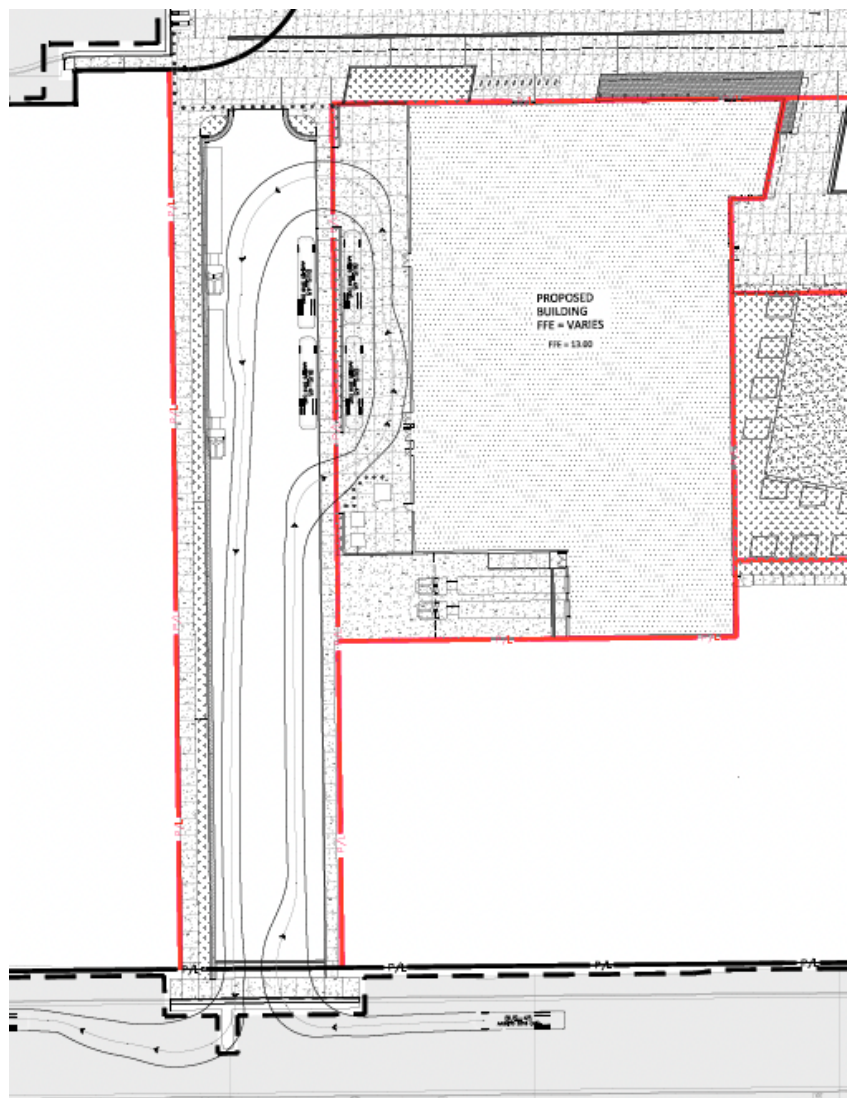


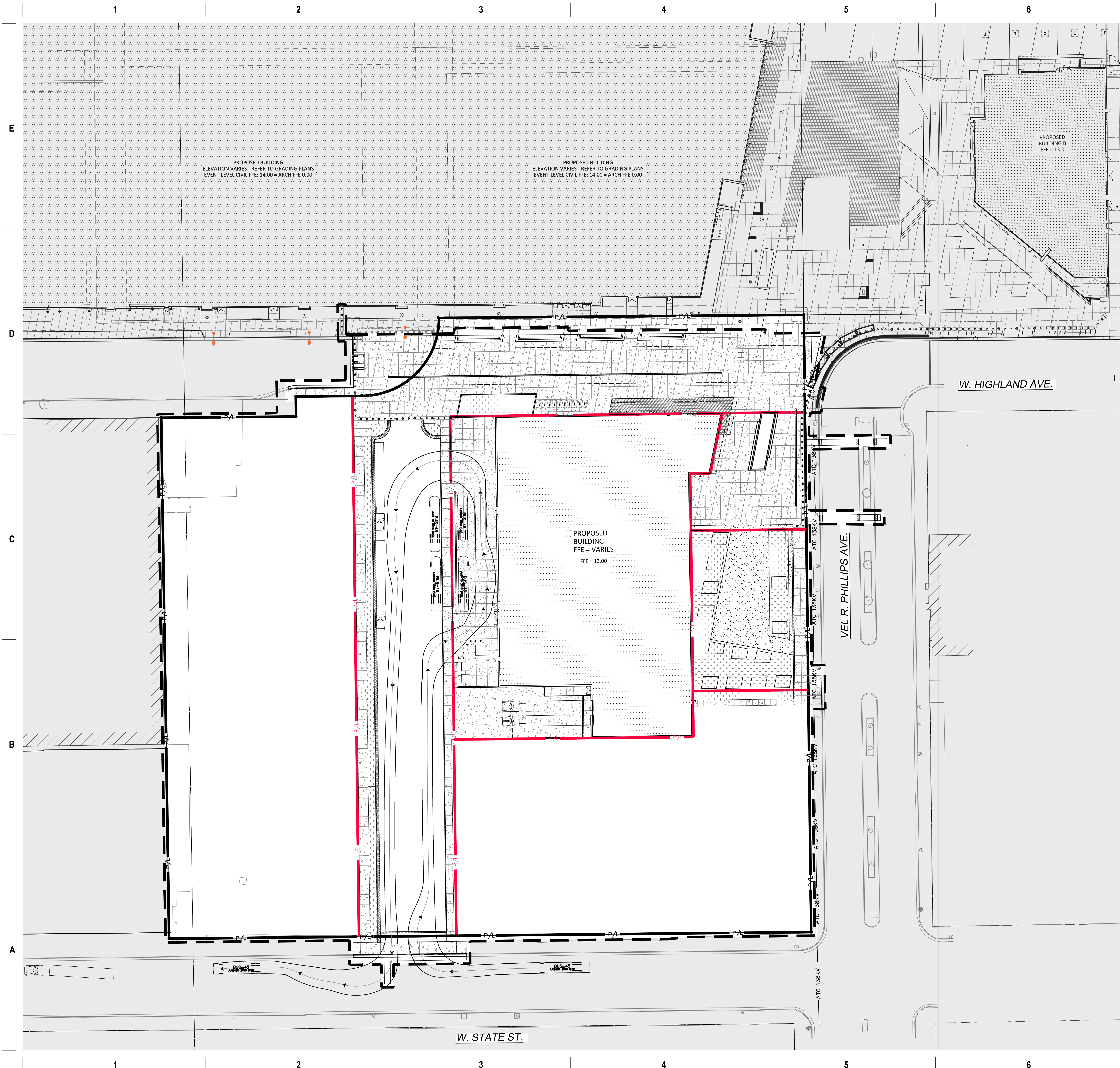


MKE Music Hall Truck Loading, Parking & Bus Parking

Shown in the image to the right there are 2 trucks in the loading dock, plus additional truck parking on the West side of the private drive. Additionally, we have room for 4 buses in the bus court adjacent to the building and two additional buses on the East side of the private drive all of these spots would have shore power stations to reduce noise from generators.

This would be more than enough bus and truck parking for a typical show in this room (total of 10 vehicles). Should we need to accommodate more bus or Truck parking we would seek to park on more of the private drive, on the Bucks loading areas if not in use and lastly look to park on State St.





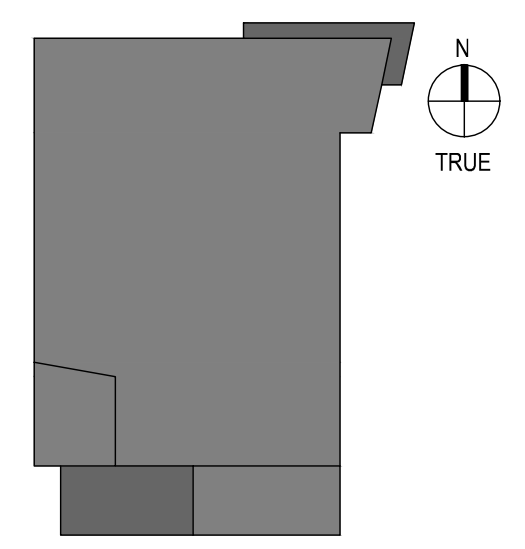
PROJECT INFORMATION
Frank Productions
Deer District (Block 3)



ISSUANCE AND REVISIONS

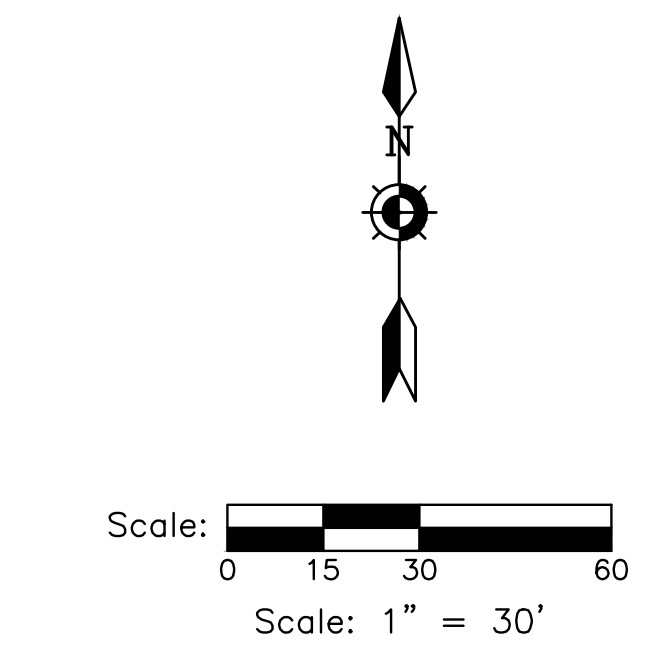
DATE	DESCRIPTION
09/18/2023	DPD ZONING SUBMITTAL

DPD ZONING SUBMITTAL
FOR PORTION OF BLOCK 3
OF MILWAUKEE BUCKS
ARENA DEVELOPMENT - GPD



SHEET INFORMATION
**PROGRESS DOCUMENTS
NOT FOR CONSTRUCTION**
These documents reflect progress and intent and may be subject to change, including additional detail. These are not final construction documents and shall not be used for final bidding or construction-related purposes.

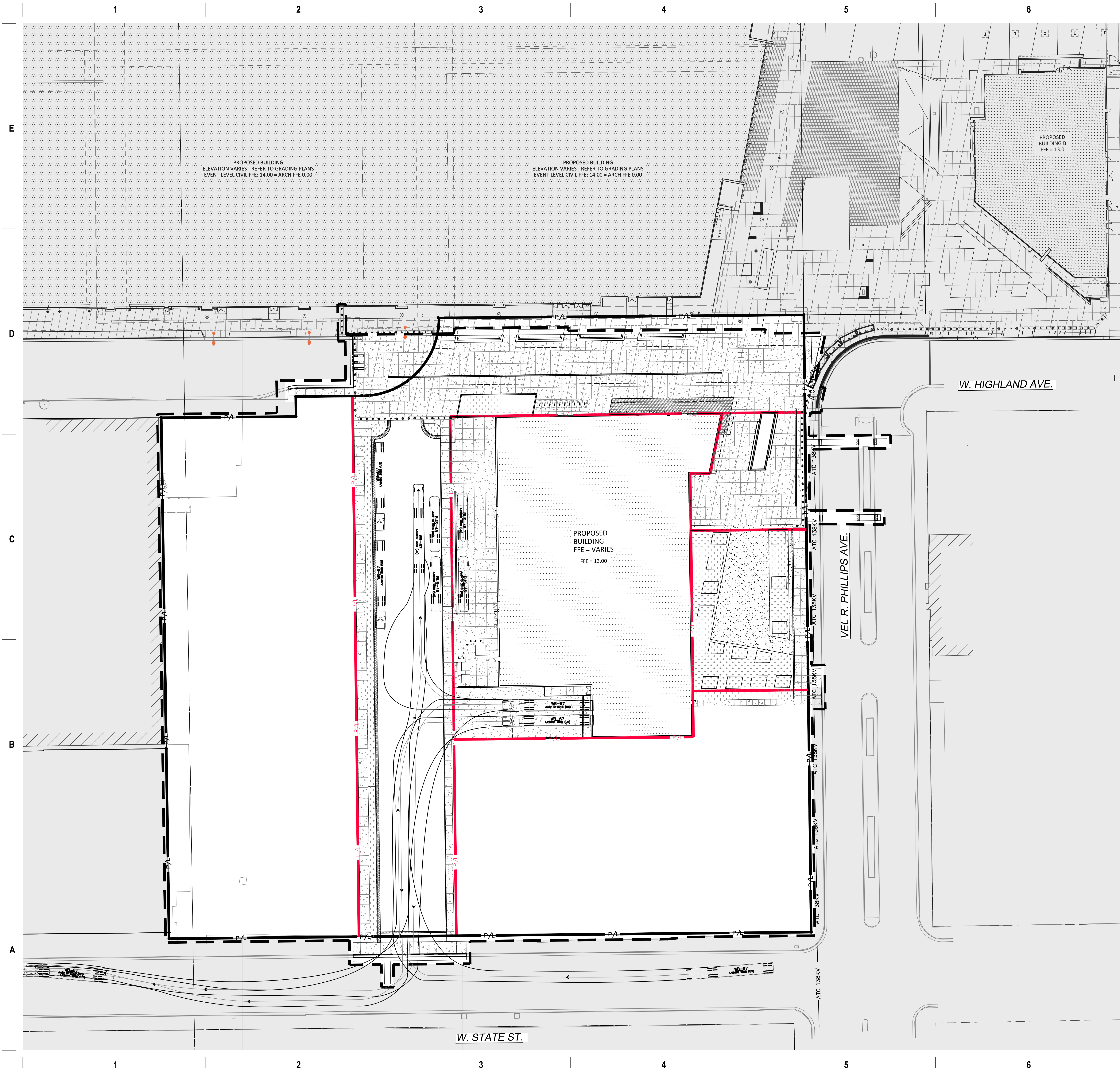
PROJECT MANAGER DMJ
PROJECT NUMBER 220601.01
BUS MOVEMENTS



DIGGERS HOTLINE
Dial 811 or (800)242-8511
www.DiggersHotline.com

C100A

© 2023 Eppstein Uhen Architects, Inc.



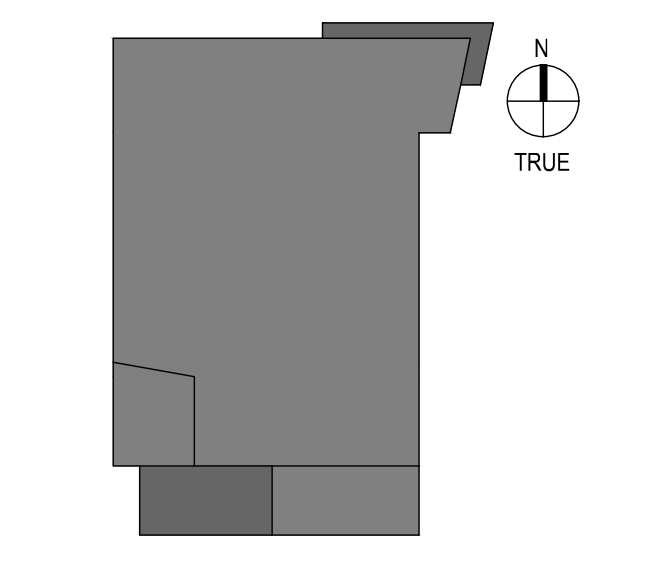
PROJECT INFORMATION
 Frank Productions
 Deer District (Block 3)



ISSUANCE AND REVISIONS

DATE	DESCRIPTION
09/18/2023	DPD ZONING SUBMITTAL

DPD ZONING SUBMITTAL
 FOR PORTION OF BLOCK 3
 OF MILWAUKEE BUCKS
 ARENA DEVELOPMENT - GPD



SHEET INFORMATION

**PROGRESS DOCUMENTS
 NOT FOR CONSTRUCTION**

These documents reflect progress and intent and may be subject to change, including additional detail. These are not final construction documents and shall not be used for final bidding or construction-related purposes.

PROJECT MANAGER DMJ
 PROJECT NUMBER 220601.01

TRUCK
 MOVEMENTS

C100B

Scale: 0 15 30 60
 Scale: 1" = 30'

DIGGERS HOTLINE
 Dial 811 or (800)242-8511
 www.DiggersHotline.com