

LANDS IN THE S.W. 1/4 SEC. 20, T. 7N., R. 22 E.

W. GALENA PL.

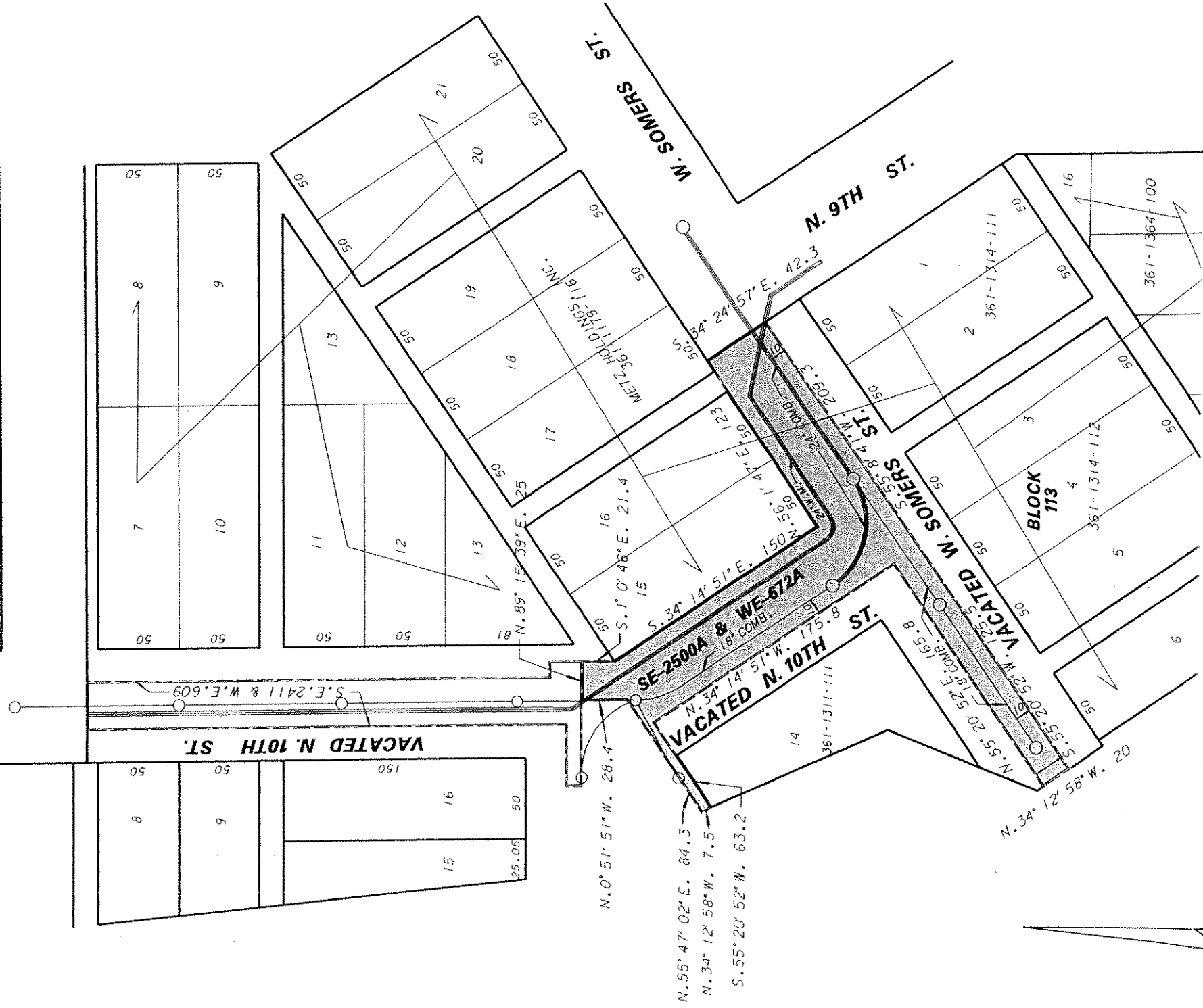


EXHIBIT "A"

ENVIRONMENTAL ENGINEERING SECTION
 INFRASTRUCTURE SERVICES DIVISION
 DEPARTMENT OF PUBLIC WORKS
 MILWAUKEE, WISCONSIN

PLAN OF SEWER EASEMENT

AREA IN VACATED N. 10TH ST. & VACATED W. SOMERS ST.
 LANDS IN S.W. 1/4 SEC. 20, T. 7 N., R. 22 E.

SCALE 1" = 80' ATLAS PAGE NO. 382 EASE NO. SE 2500A WE 672A

DRAWN BY N. OLEJNICZAK CHK'D BY A. MUNOZ W.O. NO. WK683720071

APPROVED *Matthew Cegula* DATE 10/10/07

APPROVED *[Signature]* FILE NO. 198-6-48