



EPPSTEIN UHEN  
ARCHITECTS

milwaukee - madison

333 East Chicago Street  
Milwaukee, Wisconsin 53202

tel 414 271 5350  
fax 414 271 7794

PROJECT MEMO

---

*To*  
City of Milwaukee  
Department of City Development  
Albert J. Frantza  
Principal Planner  
809 North Broadway  
Milwaukee, Wisconsin 53202  
*From* Sandra Wiegand, AIA

---

*Date* September 15, 2006  
*Project Number* 205580-JC  
*Project Name* Park Place Technology Center II

---

*Subject*  
Park Place Technology Center  
Phase II Building B

Fax    Number of Pages  
Fax Number

---

*Comments*

**PARK PLACE TECHNOLOGY CENTER**

**GENERAL AND DETAILED PLANNED DEVELOPMENT – PHASE II**

Submitted to the Department of City Development  
September 15, 2006

Albert Frantza:

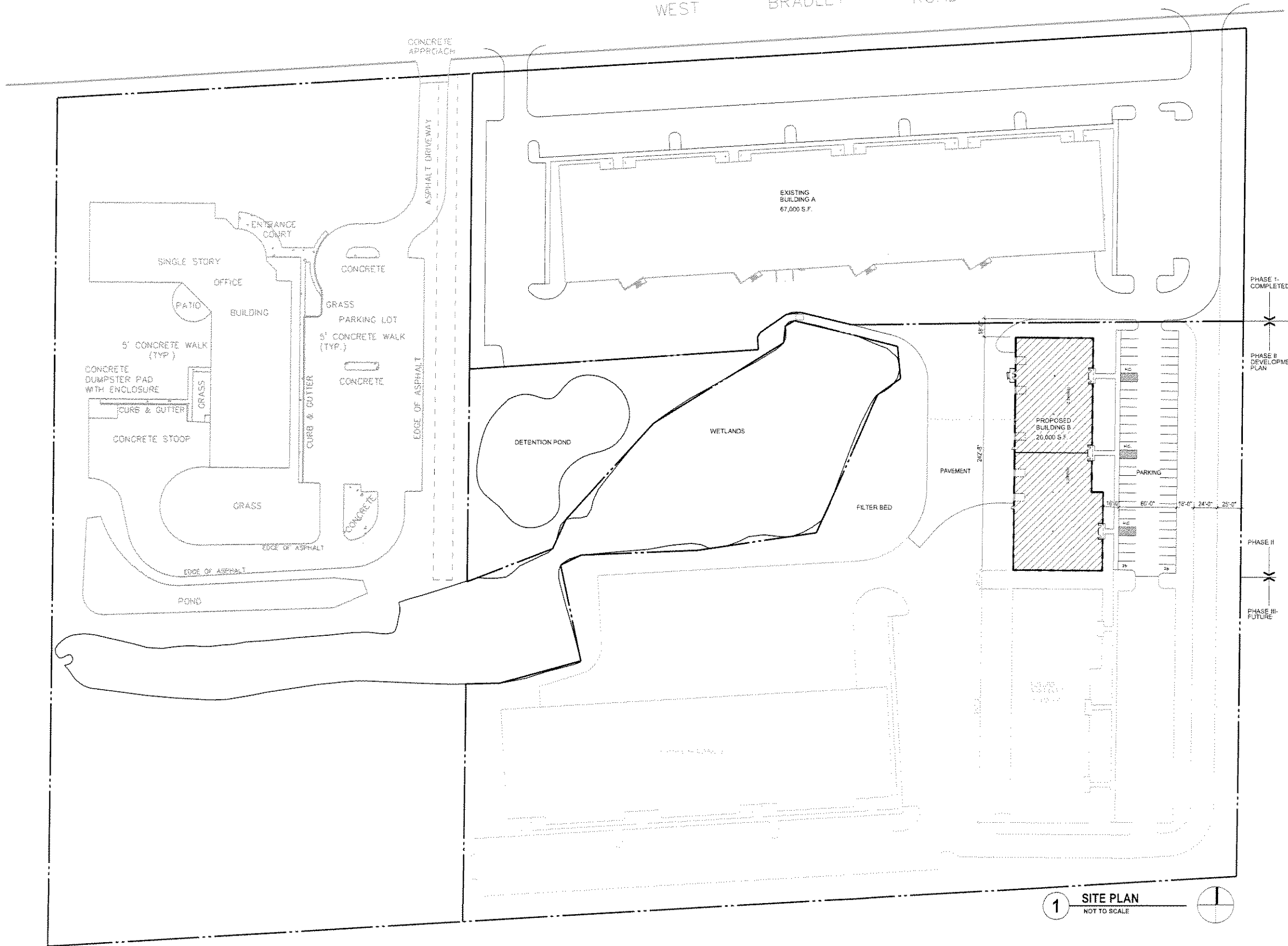
This letter is an application for Minor Modification to Planned Development. We have reviewed the seven revisions listed in the Customer Information Sheet. The modification we are proposing will not cause any of the listed conditions. Park Place Technology Center Planned Development was approved with three buildings to be built in three phases. The existing Phase I building was completed in 2001. This application is to modify the Planned Development for the start of Phase II.

The original Phase II building was to be a 58,175 square foot masonry building. The proposed Phase II building is a 20,000 square foot masonry building. The reduction in square footage of the second phase footprint results in reduced parking quantities and an increase in green space. The building design will be similar to the Phase I building. The primary facades will be 'Decade Brick' in colors compatible with the original building. The building will be located at the north end of the Phase II site, oriented as it was originally planned.

Please refer to the attached Site Plan, Floor Plans and Exterior Elevations dated September 15, 2006.

# EXHIBIT A

WEST BRADLEY ROAD

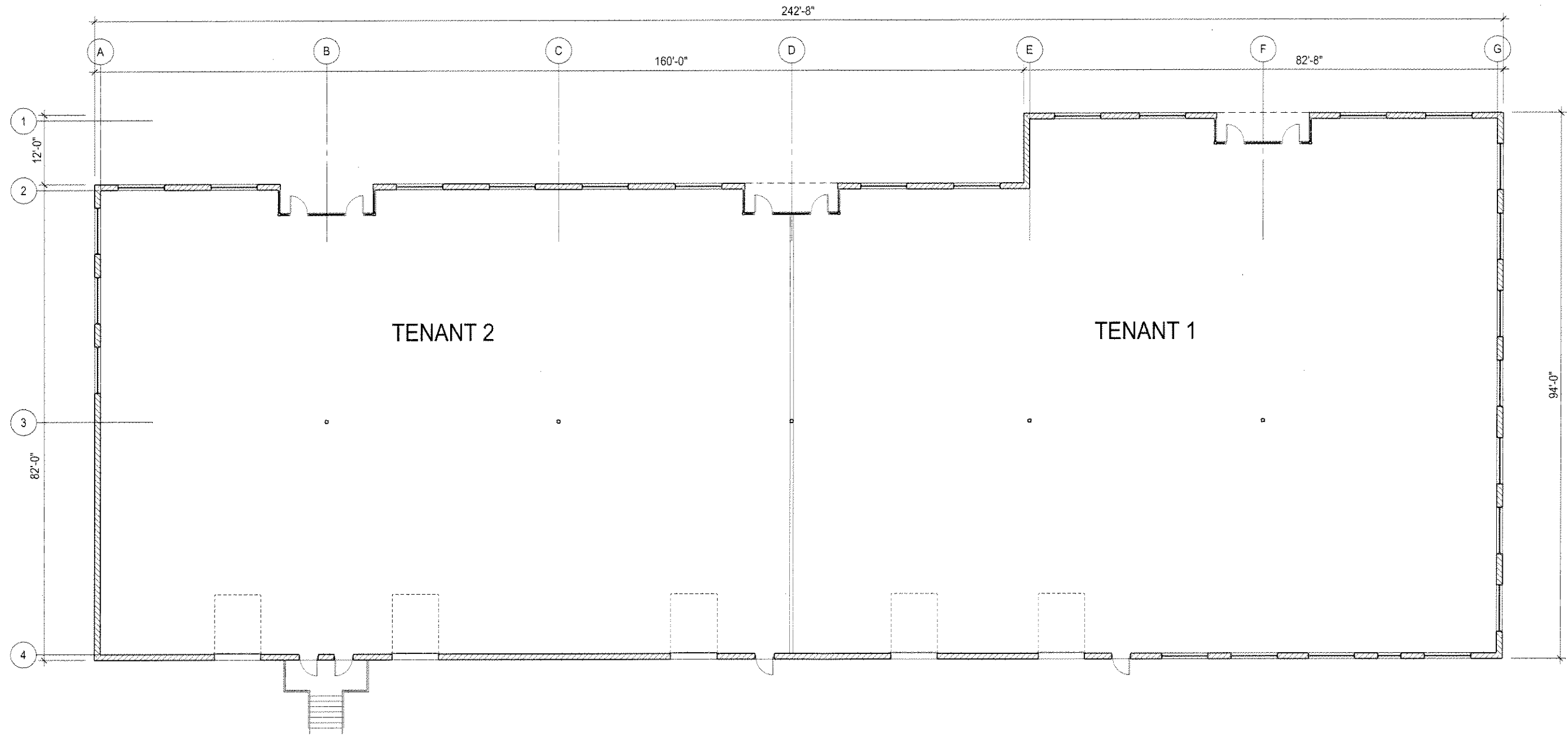


SITE DATA	
PHASE I- BUILDING A (COMPLETED)	AREA: 67,600 G.S.F. PARKING: 179 STALLS (6 H.C.)
PHASE II- BUILDING B (PROPOSED)	AREA: 20,000 G.S.F. PARKING: 53 STALLS (3 H.C.)
PHASE III- BUILDING C (FUTURE)	AREA: 20,000 G.S.F. PARKING: 53 STALLS (3 H.C.)

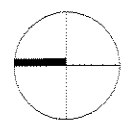
1 SITE PLAN  
NOT TO SCALE

SEPTEMBER 15, 2006  
MINOR MODIFICATION TO  
PLANNED DEVELOPMENT

## PARK PLACE TECHNOLOGY CENTER II

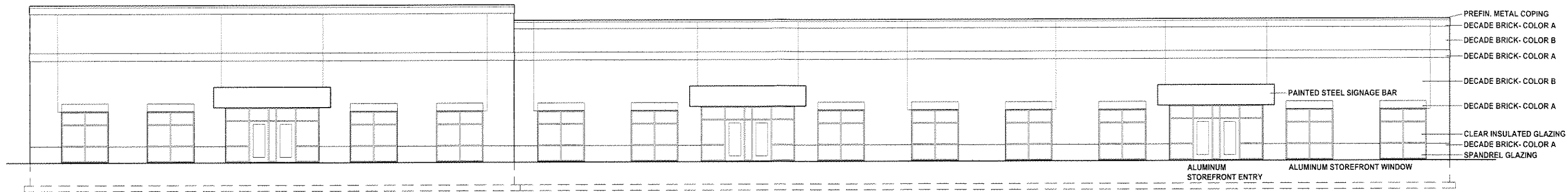


1 FLOOR PLAN  
NOT TO SCALE

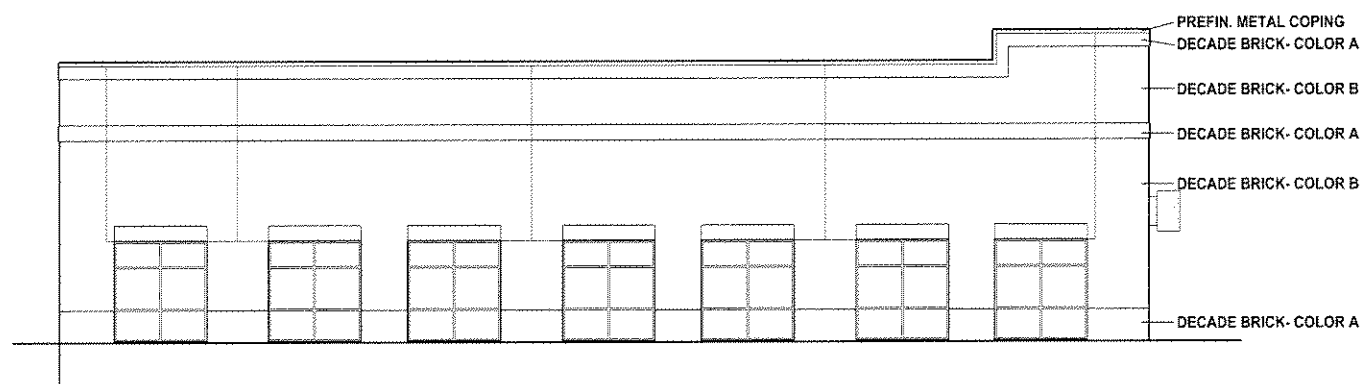


SEPTEMBER 15, 2006  
MINOR MODIFICATION TO  
PLANNED DEVELOPMENT

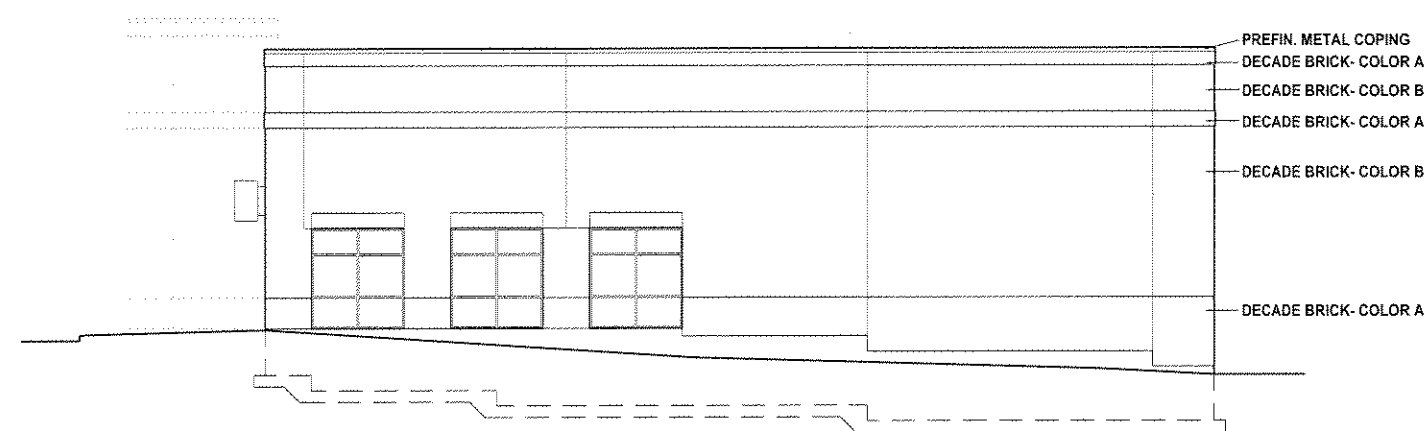
PARK PLACE TECHNOLOGY CENTER II



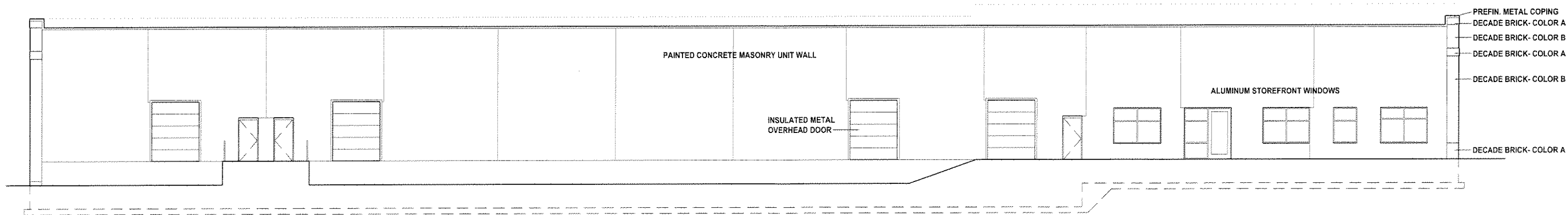
**EAST ELEVATION**



**SOUTH ELEVATION**



**NORTH ELEVATION**



**WEST ELEVATION**

**SEPTEMBER 15, 2006  
MINOR MODIFICATION TO  
PLANNED DEVELOPMENT**

**PARK PLACE TECHNOLOGY CENTER II**