



# Certificate of Appropriateness

Milwaukee Historic Preservation Commission/200 E. Wells Street/Milwaukee, WI 53202/phone 414-286-5712/fax 414-286-3004

**Property** 114 W. LLOYD Brewers Hill

**Description of work** Exterior metal chimney vent on the east wall of the house near the property line and visible from the street. It will be painted to match the surrounding siding and be installed 7' - 9' above grade in the location shown.

**Date issued** 4/9/2019 PTS ID 114701 COA: fireplace vent

In accordance with the provisions of Section 320-21 (11) and (12) of the Milwaukee Code of Ordinances, the Milwaukee Historic Preservation Commission has issued a certificate of appropriateness for the work listed above. The work was found to be consistent with preservation guidelines. The following conditions apply to this certificate of appropriateness:

1. Paint to match siding color immediately upon installation

All work must be done in a craftsman-like manner, and must be completed within one year of the date this certificate was issued. Staff must approve any changes or additions to this certificate before work begins. Work that is not completed in accordance with this certificate may be subject to correction orders or citations. If you require technical assistance, please contact Historic Preservation staff as follows: Phone: (414) 286-5712 E-mail: [hpc@milwaukee.gov](mailto:hpc@milwaukee.gov).

If permits are required, you are responsible for obtaining them from the Milwaukee Development Center. If you have questions about permit requirements, please consult the Development Center's web site, [www.milwaukee.gov/build](http://www.milwaukee.gov/build), or call (414) 286-8210.

City of Milwaukee Historic Preservation Staff

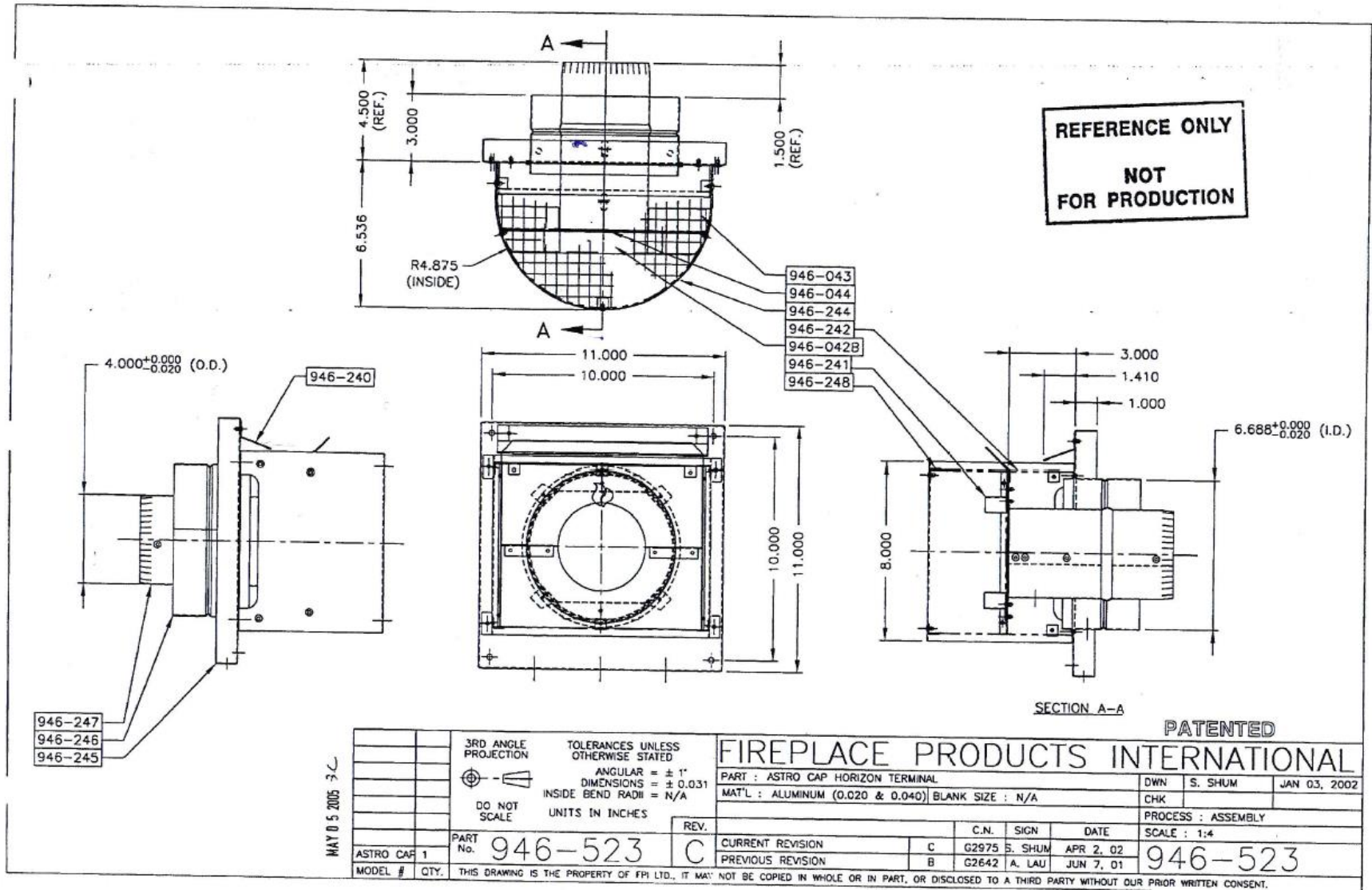
Copies to: Development Center, Ald. Milele Coggs, Contractor, Inspector Paul Wolfgramm (286-2590)



General installation location. Minimum of 7' above grade and no closer to the street than shown.



Image of vent.



REFERENCE ONLY  
 NOT  
 FOR PRODUCTION

SECTION A-A

PATENTED

FIREPLACE PRODUCTS INTERNATIONAL

PART : ASTRO CAP HORIZON TERMINAL

MAT'L : ALUMINUM (0.020 & 0.040) BLANK SIZE : N/A

DWN : S. SHUM

JAN 03, 2002

CHK :

PROCESS : ASSEMBLY

SCALE : 1:4

REV.

CURRENT REVISION : C G2975 S. SHUM APR 2, 02

PREVIOUS REVISION : B G2642 A. LAU JUN 7, 01

PART No. 946-523

ASTRO CAP 1

MODEL # QTY.

THIS DRAWING IS THE PROPERTY OF FPI LTD., IT MAY NOT BE COPIED IN WHOLE OR IN PART, OR DISCLOSED TO A THIRD PARTY WITHOUT OUR PRIOR WRITTEN CONSENT.

Vent measurements and specifications.