

Frank Productions Deer District (Block 3)

DPD ZONING SUBMITTAL FOR PORTION OF BLOCK 3 OF MILWAUKEE BUCKS ARENA DEVELOPMENT - GPD

SHEET INDEX

VOL. 2 ARCHITECTURAL DRAWINGS

A1-0	ARCHITECTURAL SITE PLAN
A1-1	FIRST FLOOR TRANSPARENCY PLAN
A1-2	FIRST & SECOND FLOOR PLANS
A1-3	MEZZANINE & TERRACE LEVEL FLOOR PLANS
A2-0	EAST & NORTH ELEVATIONS
A2-1	WEST & SOUTH ELEVATIONS
A2-2	EAST & NORTH GLAZING TYPE ELEVATIONS
A2-3	WEST & SOUTH GLAZING TYPE ELEVATIONS
A2-4	SITE SECTION
A3-0	ARCHITECTURAL RENDERING
A3-1	ARCHITECTURAL RENDERING
A3-2	ARCHITECTURAL RENDERING
A3-3	ARCHITECTURAL RENDERING
A3-4	ARCHITECTURAL RENDERING
A4-0	NORTHEAST AERIAL RENDERING
A4-1	SOUTHEAST AERIAL RENDERING
A4-2	SOUTHWEST AERIAL RENDERING



DPD ZONING SUBMITTAL

09/18/2023

PROJECT NUMBER: 2-20225-03



milwaukee | madison | green bay | denver | atlanta



PROJECT INFORMATION
Frank Productions
Deer District (Block 3)

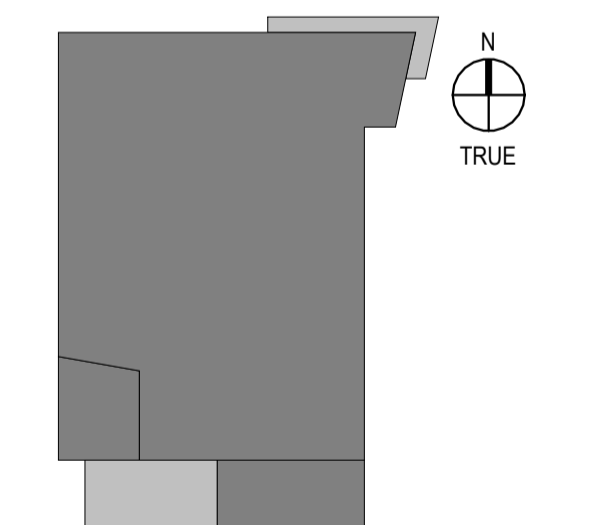


ISSUANCE AND REVISIONS

DATE	DESCRIPTION
09/18/2023	DPD ZONING SUBMITTAL

DPD ZONING SUBMITTAL
FOR PORTION OF BLOCK 3
OF MILWAUKEE BUCKS
ARENA DEVELOPMENT - GPD

KEY PLAN



SHEET INFORMATION

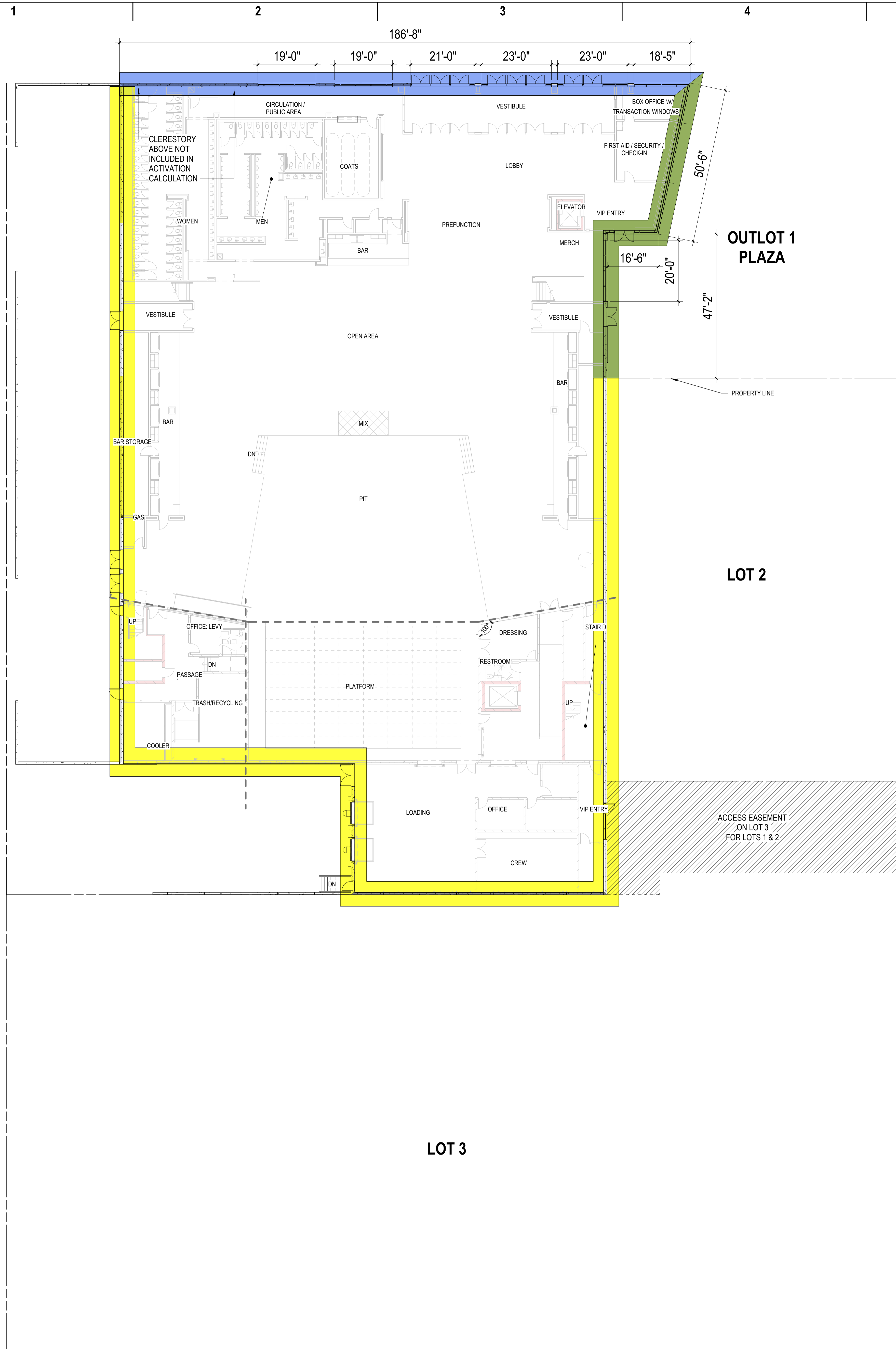
**PROGRESS DOCUMENTS
NOT FOR CONSTRUCTION**
These documents reflect progress and intent and may be subject to change, including additional detail. These are not final construction documents and shall not be used for final bidding or construction-related purposes.

PROJECT MANAGER M.J.L.
PROJECT NUMBER 2-20225-03

ARCHITECTURAL
SITE PLAN

A1-0





HIGH ACTIVATION ZONE - 75% ACTIVATION REQUIRED

Wall Length	Activation Length	Activation(%)	Required Activation Length	Difference ¹
186'-8"	123'-5"	66.1%	140'-0"	- 16'-7"
Total	186'-8"	66.1%	140'-0"	- 16'-7"

1 - Trade a portion of the extra 29'-10" of activation width in the Medium Activation Zone to supplement the 16'-7" needed in the High Activation Zone

MEDIUM ACTIVATION ZONE - 50% ACTIVATION REQUIRED

Wall Length	Activation Length	Activation(%)	Required Activation Length	Difference ¹
50'-6"	50'-6"	100%		
16'-6"	16'-6"	100%		
47'-2"	20'-0"	42.4%	57'-2"	+ 29'-10"
Total	114'-2"	76.2%	57'-2"	+ 29'-10"

1 - Trade a portion of the extra 29'-10" of activation width in the Medium Activation Zone to supplement the 16'-7" needed in the High Activation Zone

LOW ACTIVATION ZONE - 0% ACTIVATION REQUIRED

No Glazing Requirements



milwaukee | madison | green bay | denver | atlanta



PROJECT INFORMATION

Frank Productions
Deer District (Block 3)

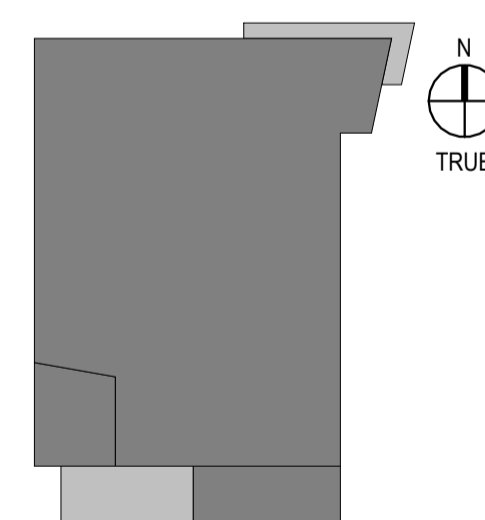


ISSUANCE AND REVISIONS

DATE	DESCRIPTION
09/18/2023	DPD ZONING SUBMITTAL

DPD ZONING SUBMITTAL
FOR PORTION OF BLOCK 3
OF MILWAUKEE BUCKS
ARENA DEVELOPMENT - GPD

KEY PLAN



SHEET INFORMATION

**PROGRESS DOCUMENTS
NOT FOR CONSTRUCTION**
These documents reflect progress and intent and may be subject to change, including additional detail. These are not final construction documents and shall not be used for final bidding or construction-related purposes.

PROJECT MANAGER MJL
PROJECT NUMBER 2-20225-03

FIRST FLOOR
TRANSPARENCY
PLAN

A1-1

© 2023 Epstein Uhen Architects, Inc.



milwaukee | madison | green bay | denver | atlanta



PROJECT INFORMATION
Frank Productions
Deer District (Block 3)

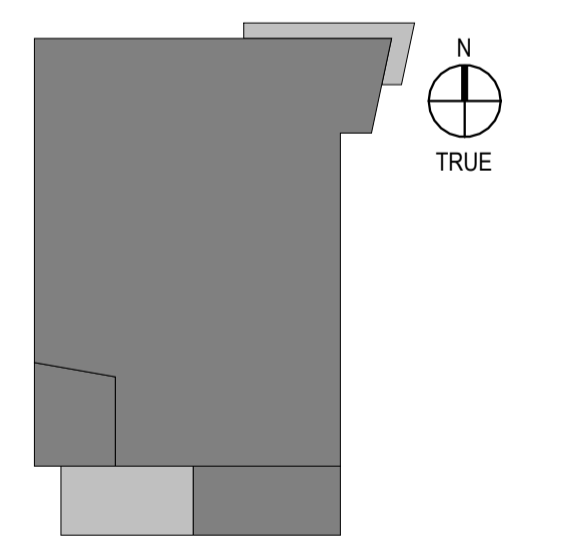


ISSUANCE AND REVISIONS

DATE	DESCRIPTION
09/18/2023	DPD ZONING SUBMITTAL

DPD ZONING SUBMITTAL
FOR PORTION OF BLOCK 3
OF MILWAUKEE BUCKS
ARENA DEVELOPMENT - GPD

KEY PLAN



SHEET INFORMATION

**PROGRESS DOCUMENTS
NOT FOR CONSTRUCTION**
These documents reflect progress and intent and may be subject to change, including additional detail. These are not final construction documents and shall not be used for final bidding or construction-related purposes.

PROJECT MANAGER MJL
PROJECT NUMBER 2-20225-03

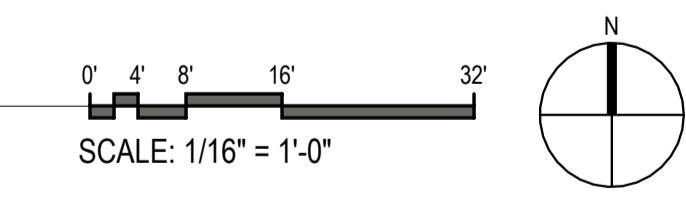
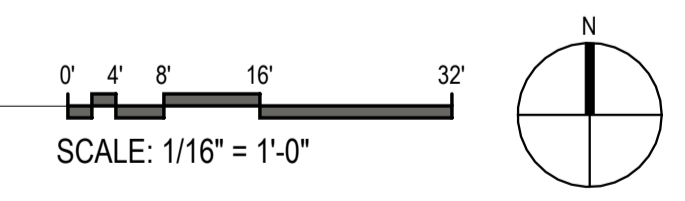
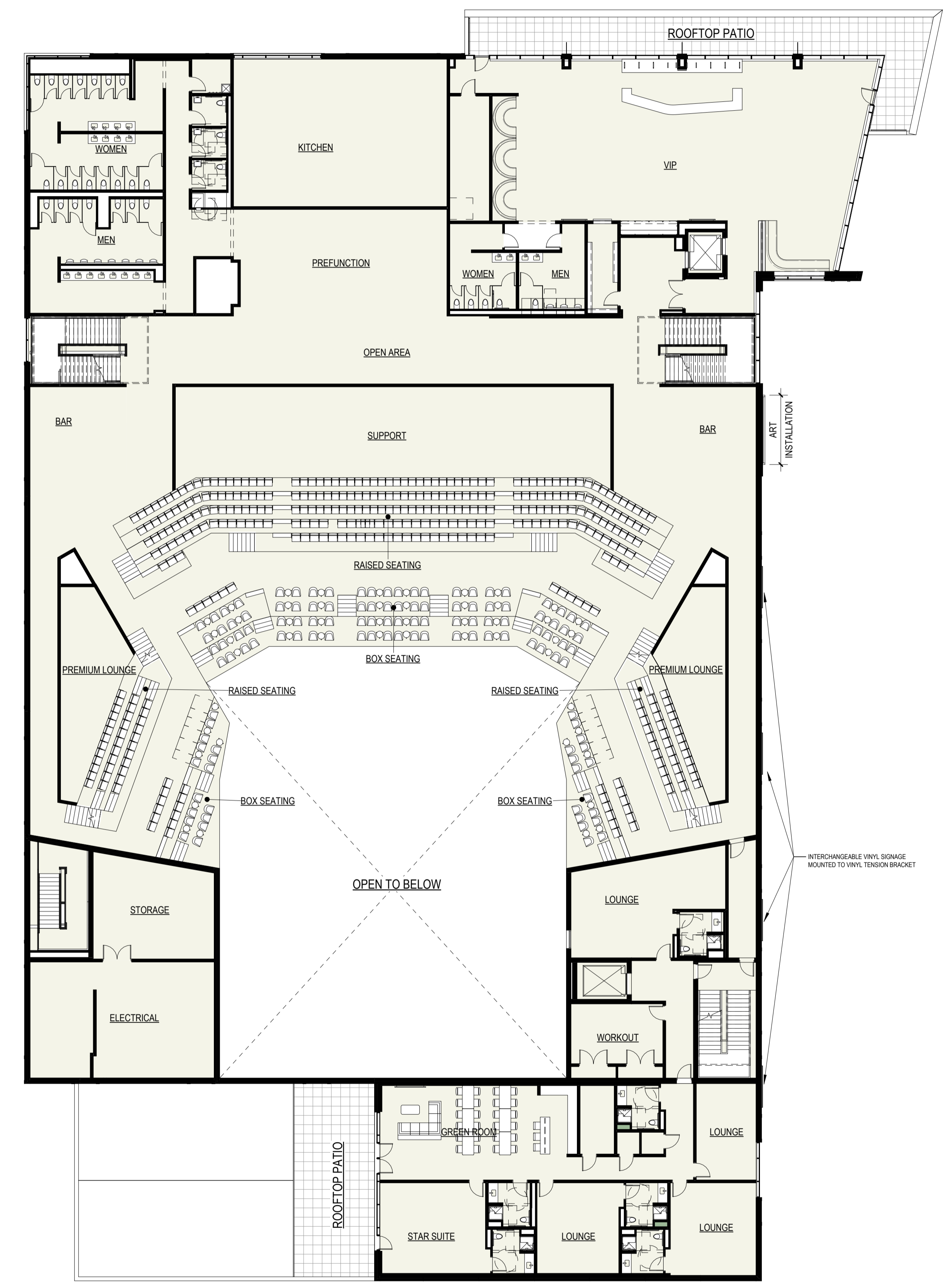
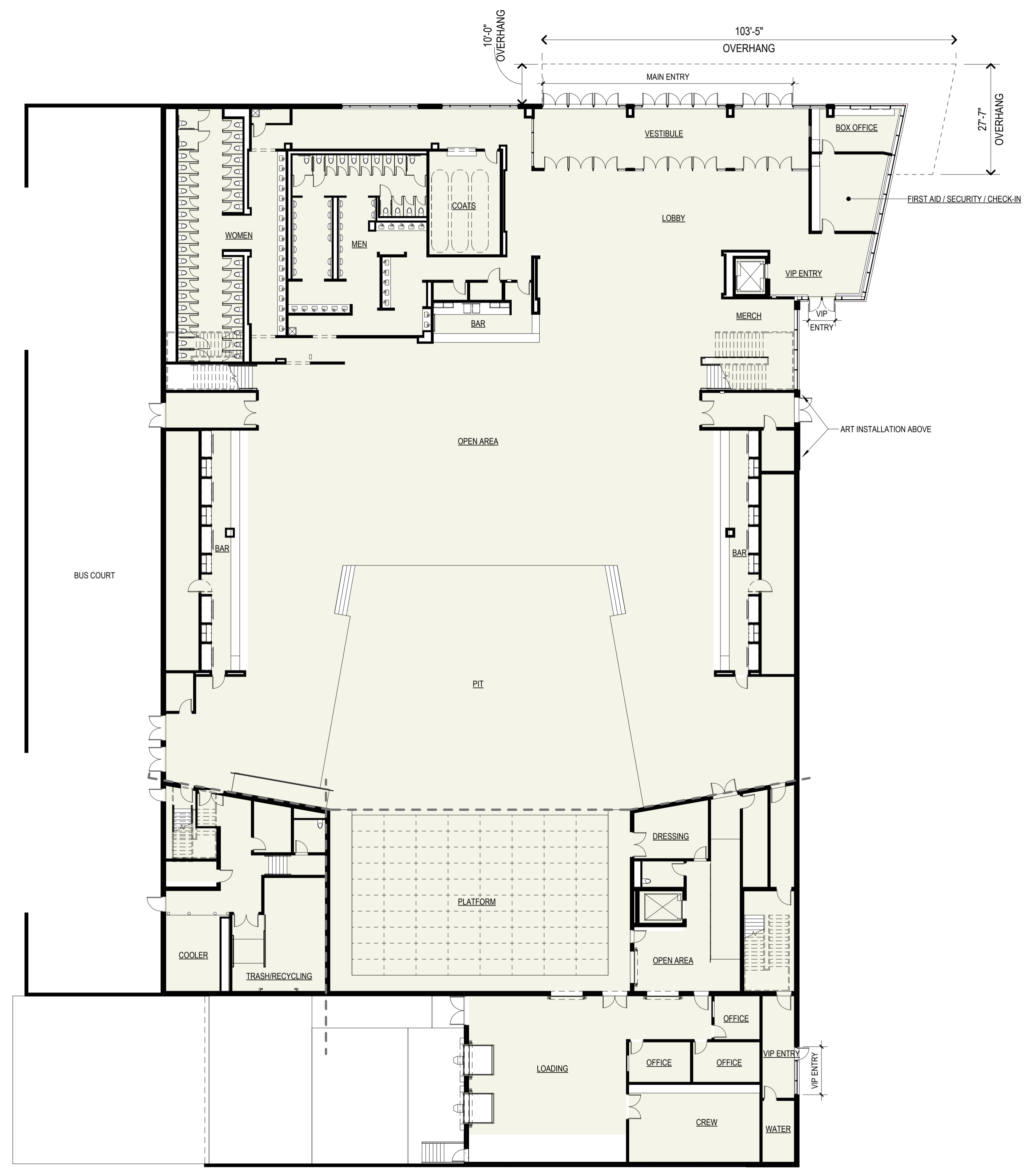
FIRST & SECOND
FLOOR PLANS

A1-2

© 2023 Epstein Uhen Architects, Inc.

E
D
C
B
A

1 2 3 4 5 6 7





milwaukee | madison | green bay | denver | atlanta



PROJECT INFORMATION

Frank Productions
Deer District (Block 3)

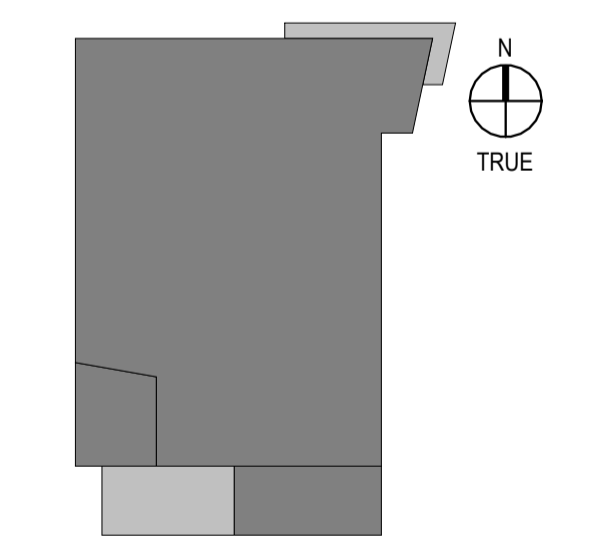


ISSUANCE AND REVISIONS

DATE	DESCRIPTION
09/18/2023	DPD ZONING SUBMITTAL

DPD ZONING SUBMITTAL
FOR PORTION OF BLOCK 3
OF MILWAUKEE BUCKS
ARENA DEVELOPMENT - GPD

KEY PLAN



SHEET INFORMATION

**PROGRESS DOCUMENTS
NOT FOR CONSTRUCTION**
These documents reflect progress and intent and may be subject to change, including additional detail. These are not final construction documents and shall not be used for final bidding or construction-related purposes.

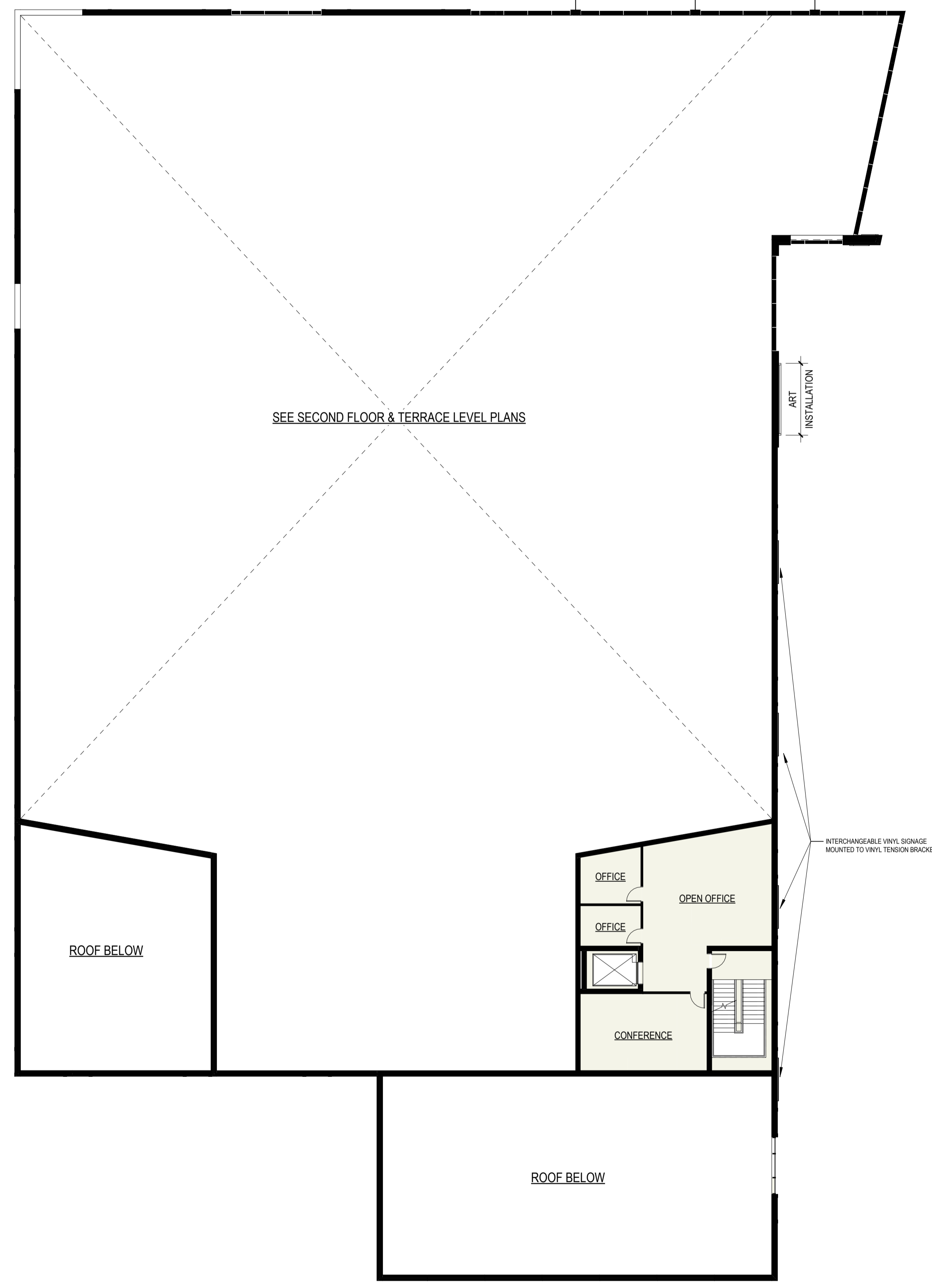
PROJECT MANAGER MJL

PROJECT NUMBER 2-20225-03

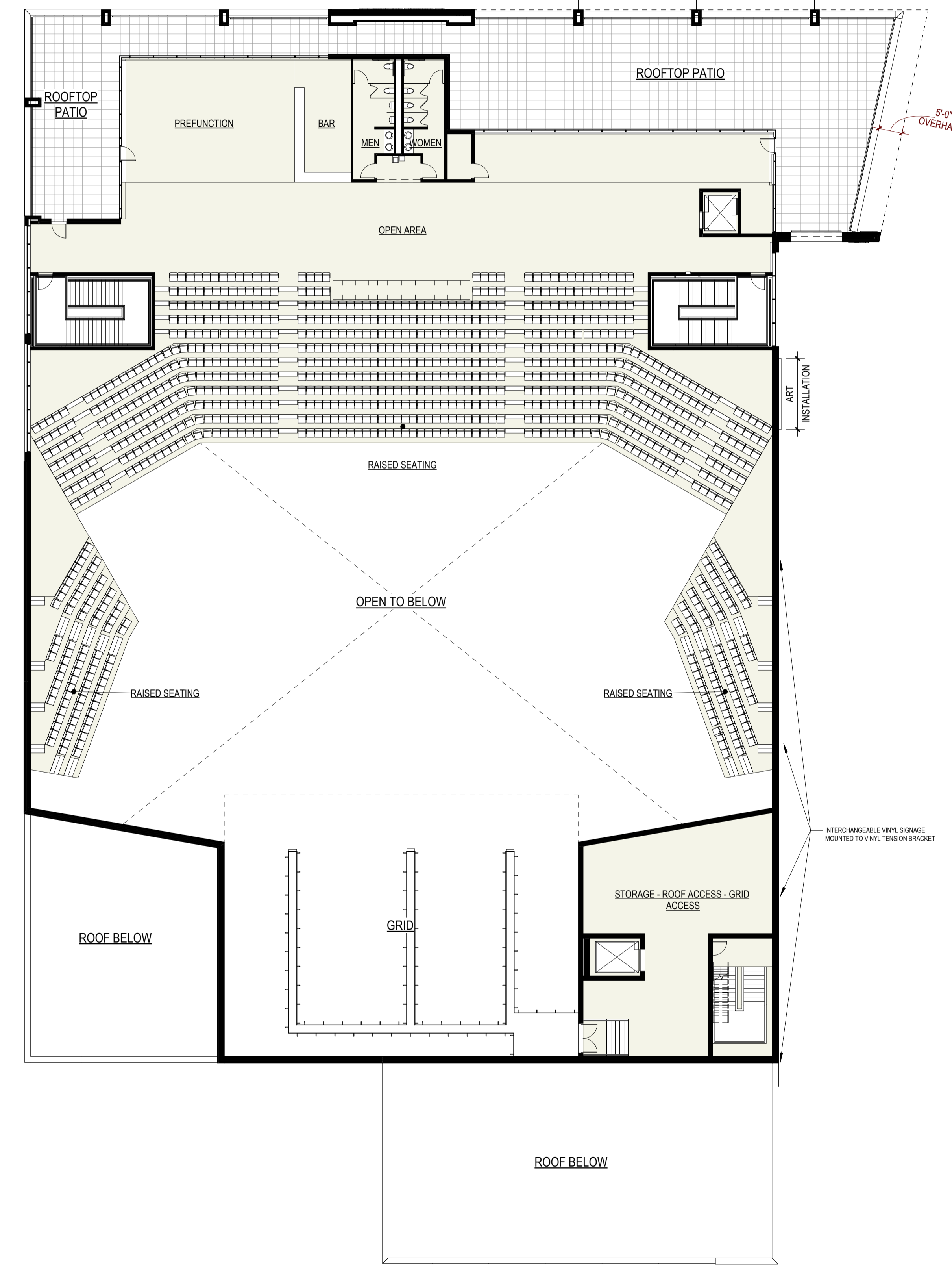
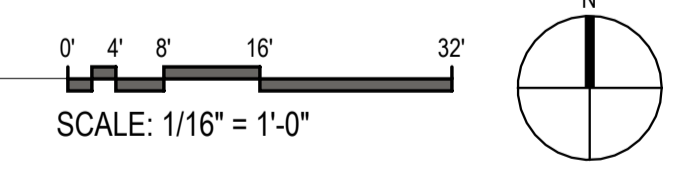
MEZZANINE &
TERRACE LEVEL
FLOOR PLANS

A1-3

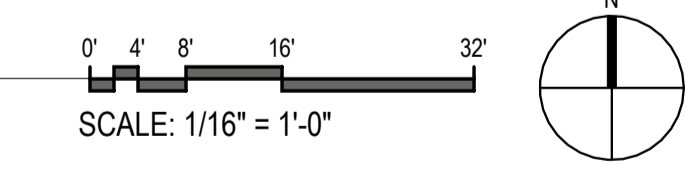
© 2023 Epstein Uhen Architects, Inc.



B1 MEZZANINE LEVEL PLAN
1/16" = 1'-0"



B5 TERRACE LEVEL PLAN
1/16" = 1'-0"



1

2

3

4

5

6

7

E

D

C



milwaukee | madison | green bay | denver | atlanta



PROJECT INFORMATION
Frank Productions
Deer District (Block 3)

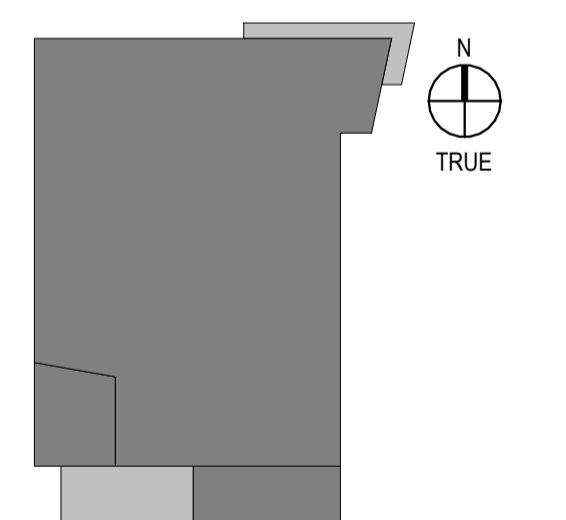


ISSUANCE AND REVISIONS

DATE	DESCRIPTION
09/18/2023	DPD ZONING SUBMITTAL

DPD ZONING SUBMITTAL
FOR PORTION OF BLOCK 3
OF MILWAUKEE BUCKS
ARENA DEVELOPMENT - GPD

KEY PLAN



SHEET INFORMATION

**PROGRESS DOCUMENTS
NOT FOR CONSTRUCTION**
These documents reflect progress and intent and may be subject to change, including additional detail. These are not final construction documents and shall not be used for final bidding or construction-related purposes.

PROJECT MANAGER M.J.L.
PROJECT NUMBER 2-20225-03

EAST & NORTH
ELEVATIONS

A2-0

© 2023 Epstein Uhen Architects, Inc.

GLAZING REFERENCES

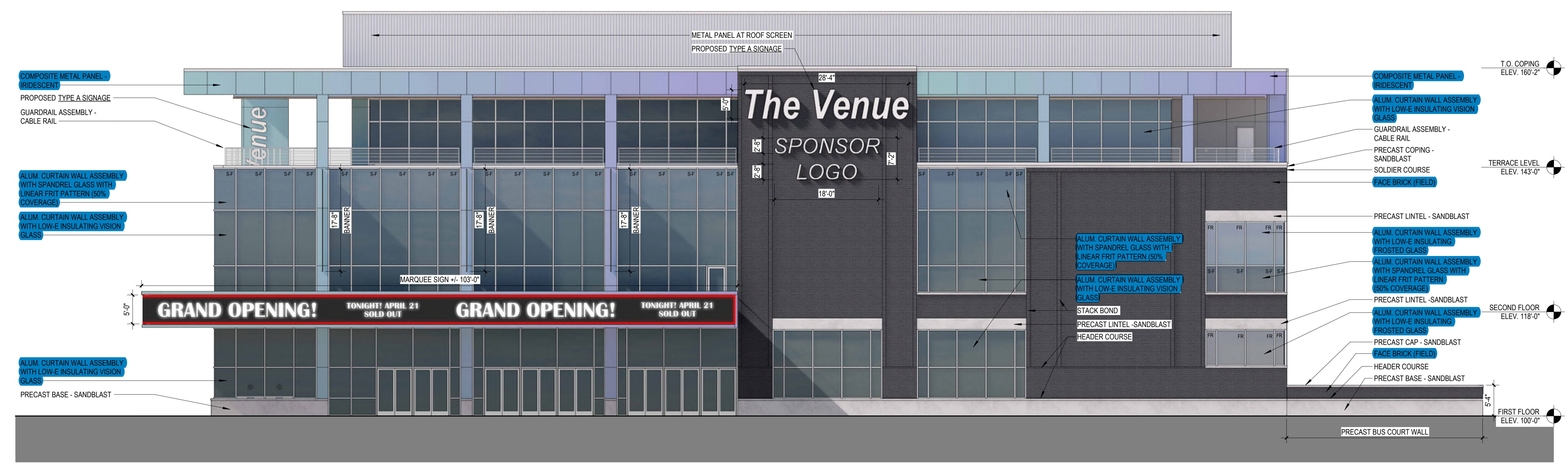


SPANDREL GLASS WITH LINEAR FRIT PATTERN (50% COVERAGE) FROSTED GLASS OBSCURED LOW-E INSULATING VISION GLASS WITH LINEAR FRIT PATTERN (50% COVERAGE) LOW-E INSULATING VISION GLASS

1: DCD STAFF TO APPROVE GLASS SAMPLES WHEN AVAILABLE



C1 EAST ELEVATION
1" = 10'-0"



A2 NORTH ELEVATION
1" = 10'-0"

1

2

3

4

5

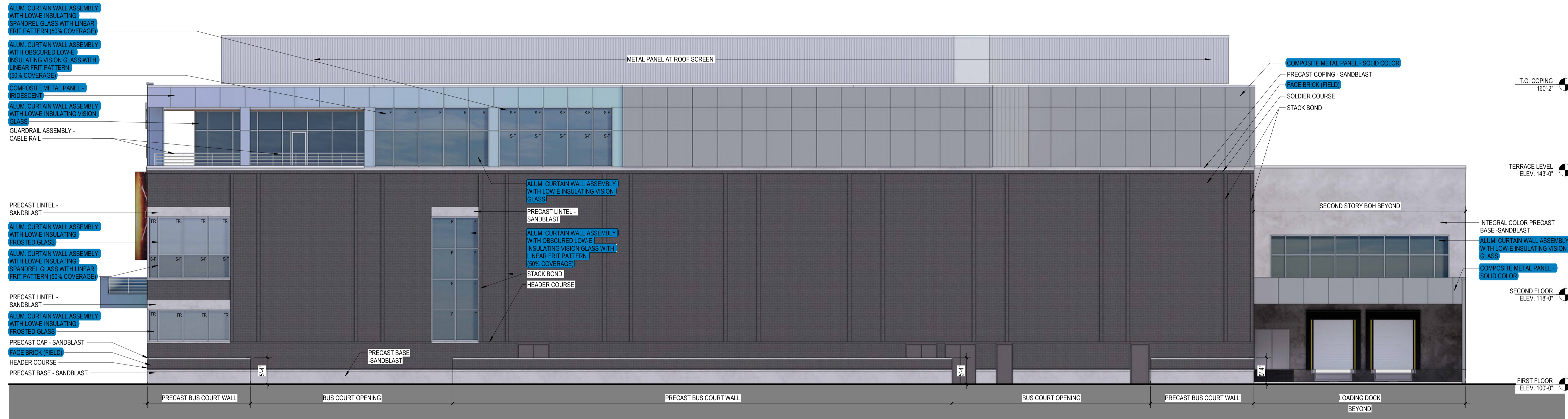
6

7

E

D

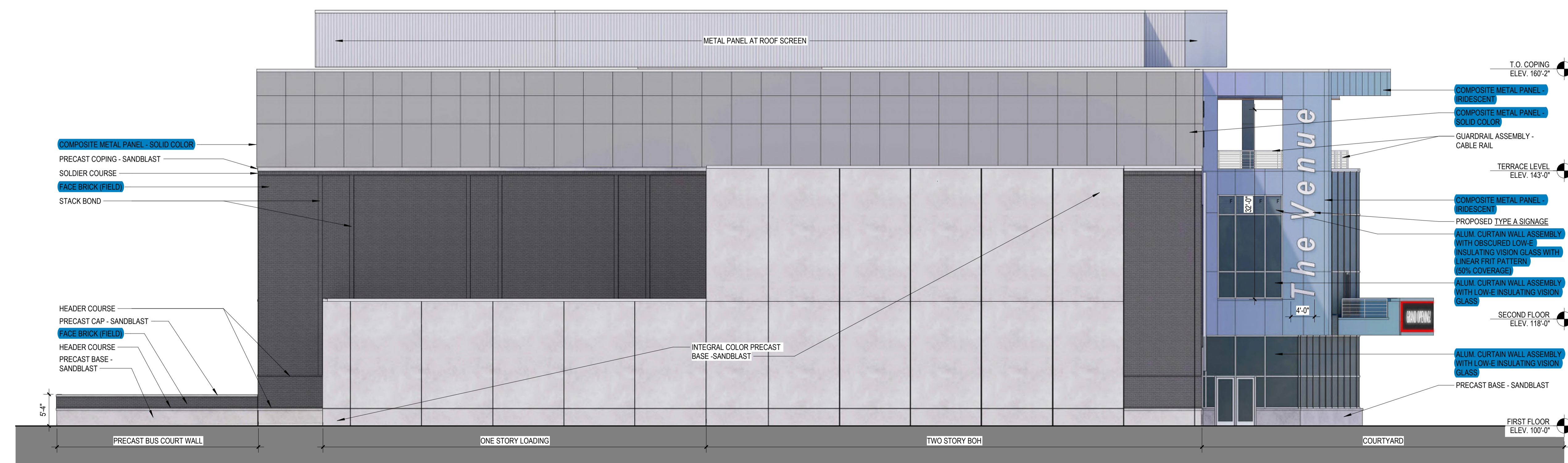
C



C1 WEST ELEVATION
1" = 10'-0"

B

A



A2 SOUTH ELEVATION
1" = 10'-0"

GLAZING REFERENCES



1: DCD STAFF TO APPROVE GLASS SAMPLES WHEN AVAILABLE



PROJECT INFORMATION
Frank Productions
Deer District (Block 3)

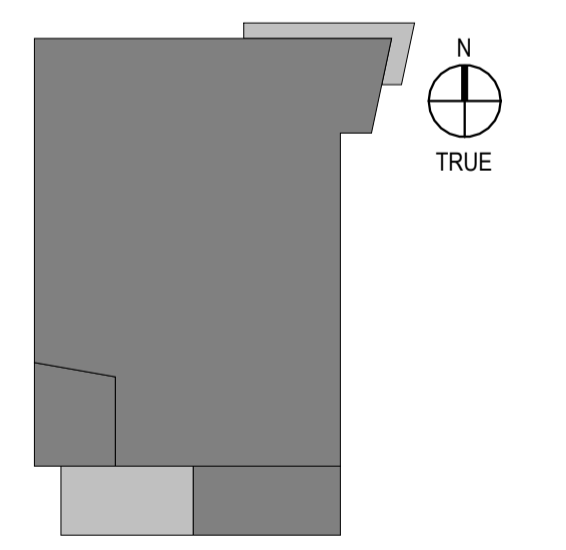


ISSUANCE AND REVISIONS

DATE	DESCRIPTION
09/18/2023	DPD ZONING SUBMITTAL

DPD ZONING SUBMITTAL
FOR PORTION OF BLOCK 3
OF MILWAUKEE BUCKS
ARENA DEVELOPMENT - GPD

KEY PLAN



SHEET INFORMATION

**PROGRESS DOCUMENTS
NOT FOR CONSTRUCTION**
These documents reflect progress and intent and may be subject to change, including additional detail. These are not final construction documents and shall not be used for final bidding or construction-related purposes.

PROJECT MANAGER M.J.L.
PROJECT NUMBER 2-20225-03

WEST & SOUTH
ELEVATIONS

A2-1

GLAZING LEGEND

- SPANDREL GLASS WITH LINEAR FRIT PATTERN (50% COVERAGE)
- FROSTED GLASS
- OBSCURED LOW-E INSULATING VISION GLASS WITH LINEAR FRIT PATTERN (50% COVERAGE)
- LOW-E INSULATING VISION GLASS

GLAZING REFERENCES

SPANDREL GLASS WITH LINEAR FRIT PATTERN (50% COVERAGE) FROSTED GLASS OBSCURED LOW-E INSULATING VISION GLASS WITH LINEAR FRIT PATTERN (50% COVERAGE) LOW-E INSULATING VISION GLASS

1: DCD STAFF TO APPROVE GLASS SAMPLES WHEN AVAILABLE



C1 EAST ELEVATION - GLAZING TYPE ANALYSIS
1/8" = 1'-0"



A2 NORTH ELEVATION - GLAZING TYPE ANALYSIS
1/8" = 1'-0"



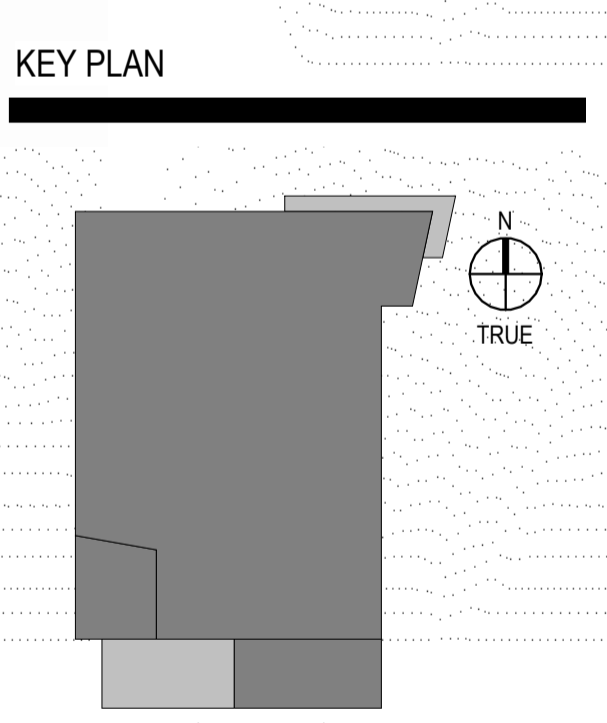
PROJECT INFORMATION
Frank Productions
Deer District (Block 3)



ISSUANCE AND REVISIONS

DATE	DESCRIPTION
09/18/2023	DPD ZONING SUBMITTAL

DPD ZONING SUBMITTAL FOR PORTION OF BLOCK 3 OF MILWAUKEE BUCKS ARENA DEVELOPMENT - GPD



SHEET INFORMATION

PROGRESS DOCUMENTS NOT FOR CONSTRUCTION

These documents reflect progress and intent and may be subject to change, including additional detail. These are not final construction documents and shall not be used for final bidding or construction-related purposes.

PROJECT MANAGER M.J.L.
PROJECT NUMBER 2-20225-03

EAST & NORTH GLAZING TYPE ELEVATIONS

GLAZING LEGEND

- = SPANDREL GLASS WITH LINEAR FRIT PATTERN (50% COVERAGE)
- = FROSTED GLASS
- = OBSCURED LOW-E INSULATING VISION GLASS WITH LINEAR FRIT PATTERN (50% COVERAGE)
- = LOW-E INSULATING VISION GLASS

GLAZING REFERENCES

1: DCD STAFF TO APPROVE GLASS SAMPLES WHEN AVAILABLE



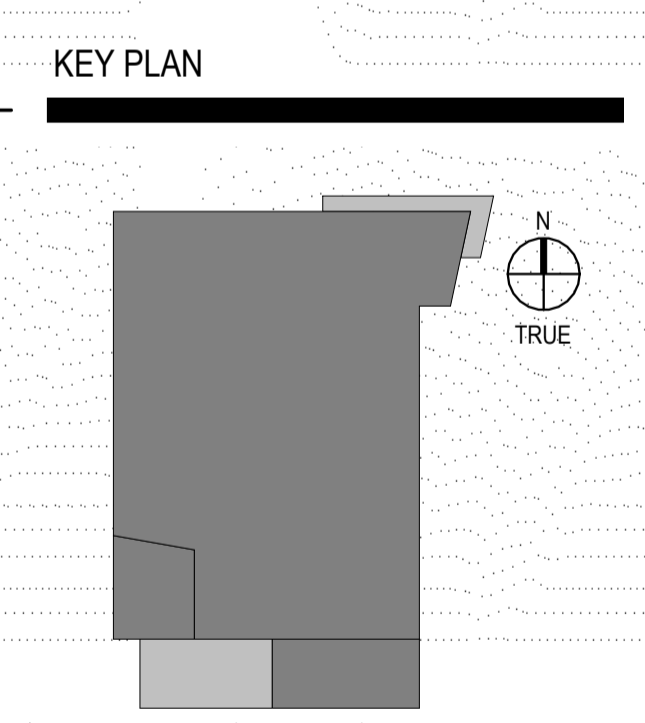
PROJECT INFORMATION
 Frank Productions
 Deer District (Block 3)



ISSUANCE AND REVISIONS

DATE	DESCRIPTION
09/18/2023	DPD ZONING SUBMITTAL

DPD ZONING SUBMITTAL
 FOR PORTION OF BLOCK 3
 OF MILWAUKEE BUCKS
 ARENA DEVELOPMENT - GPD



SHEET INFORMATION

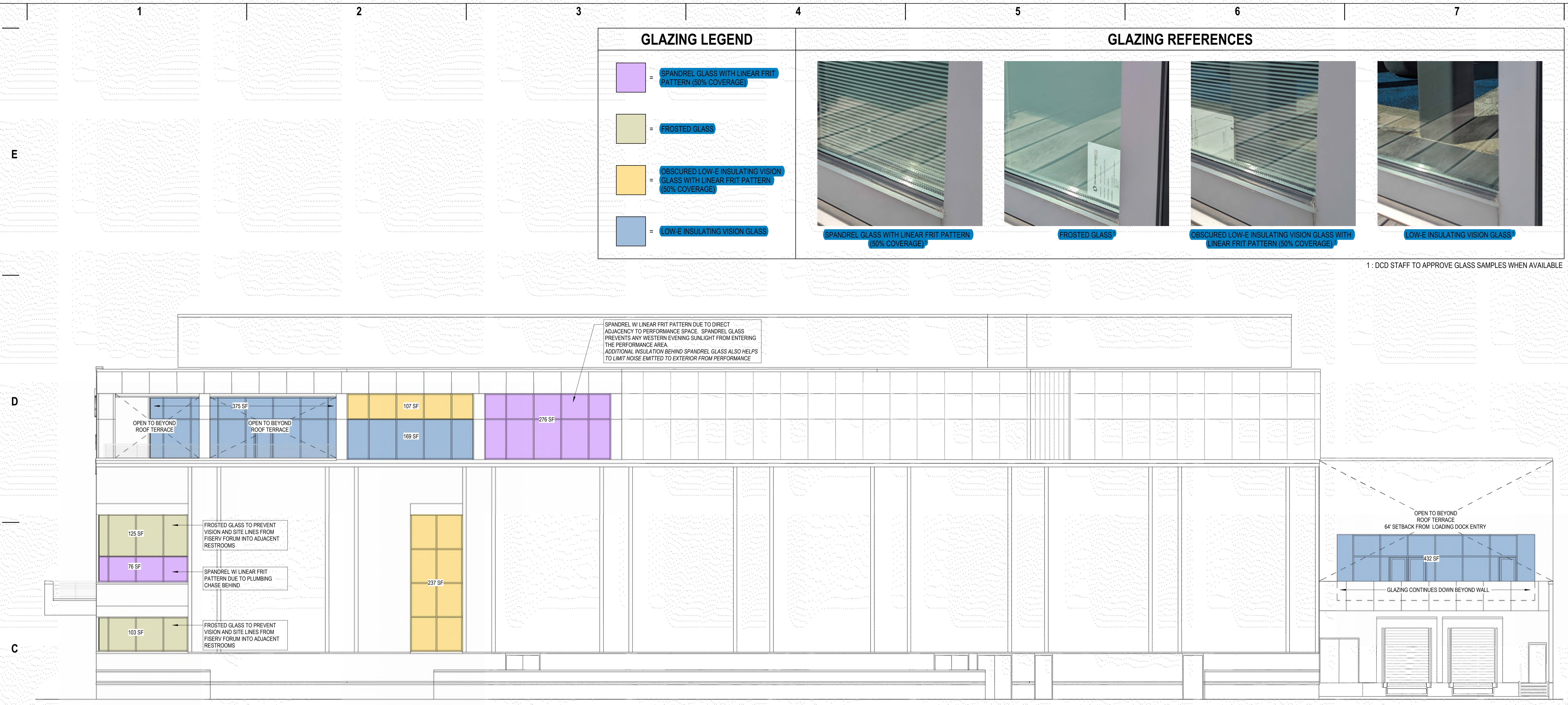
**PROGRESS DOCUMENTS
 NOT FOR CONSTRUCTION**

These documents reflect progress and intent and may be subject to change, including additional detail. These are not final construction documents and shall not be used for final bidding or construction-related purposes.

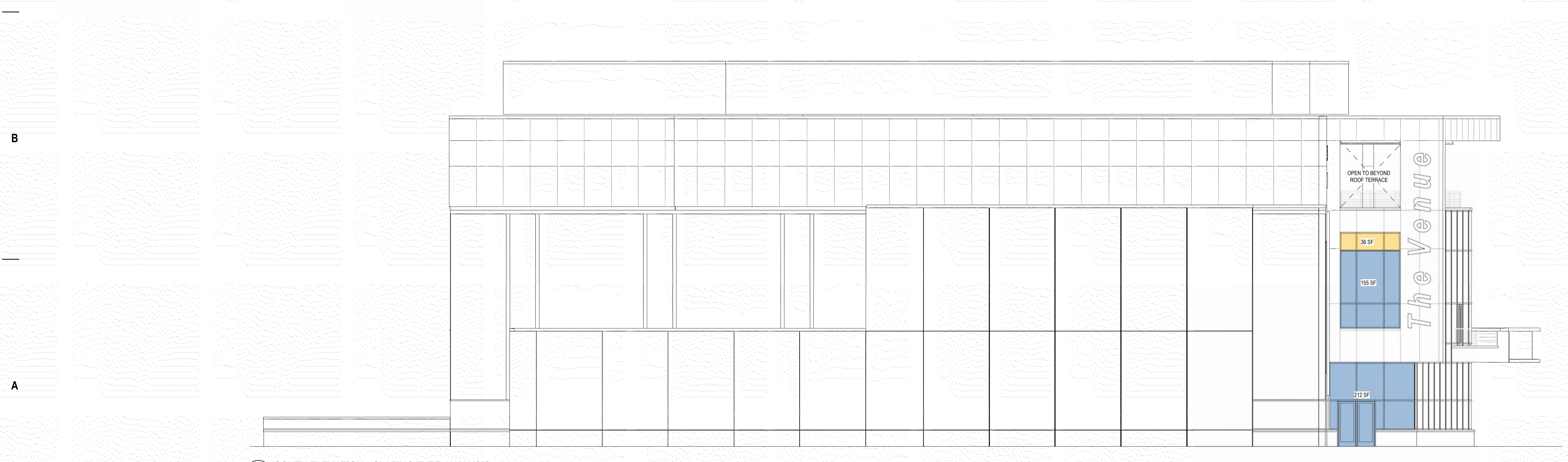
PROJECT MANAGER: MJL
 PROJECT NUMBER: 2-20225-03

WEST & SOUTH
 GLAZING TYPE
 ELEVATIONS

A2-3



C1 WEST ELEVATION - Glazing Area
 1/8" = 1'-0"



A2 SOUTH ELEVATION - GLAZING TYPE ANALYSIS
 1/8" = 1'-0"

1

2

3

4

5

6

7

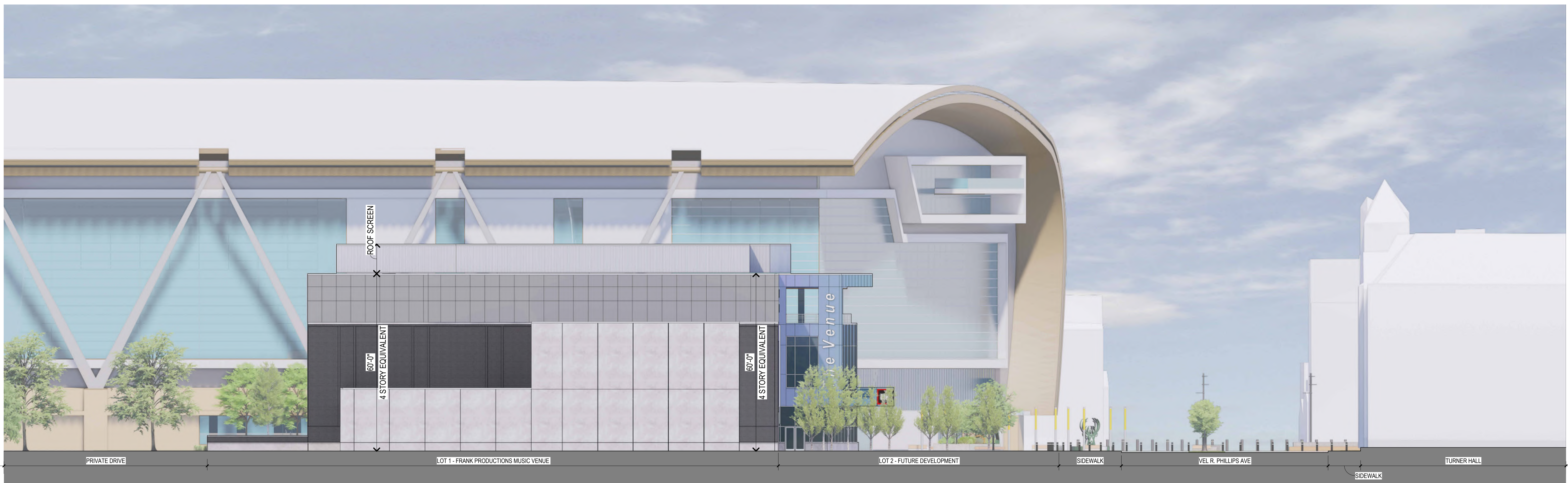
E

D

C

B

A



B1 SITE SECTION
1/16" = 1'-0"



milwaukee | madison | green bay | denver | atlanta



PROJECT INFORMATION
Frank Productions
Deer District (Block 3)

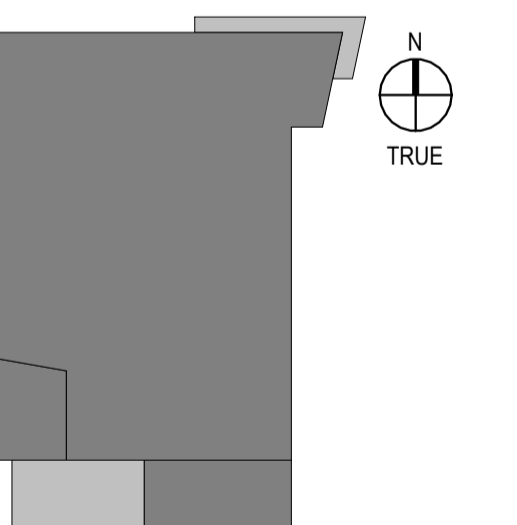


ISSUANCE AND REVISIONS

DATE	DESCRIPTION
09/18/2023	DPD ZONING SUBMITTAL

DPD ZONING SUBMITTAL
FOR PORTION OF BLOCK 3
OF MILWAUKEE BUCKS
ARENA DEVELOPMENT - GPD

KEY PLAN



SHEET INFORMATION

**PROGRESS DOCUMENTS
NOT FOR CONSTRUCTION**
These documents reflect progress and intent and may be subject to change, including additional detail. These are not final construction documents and shall not be used for final bidding or construction-related purposes.

PROJECT MANAGER MJL
PROJECT NUMBER 2-20225-03

SITE SECTION
A2-4

© 2023 Epstein Uhen Architects, Inc.

1

2

3

4

5

6

7

1

2

3

4

5

6

7

E

D

C

B

A



VIEW FROM DEER DISTRICT PLAZA LOOKING TOWARDS MUSIC VENUE



milwaukee | madison | green bay | denver | atlanta



PROJECT INFORMATION

Frank Productions
Deer District (Block 3)

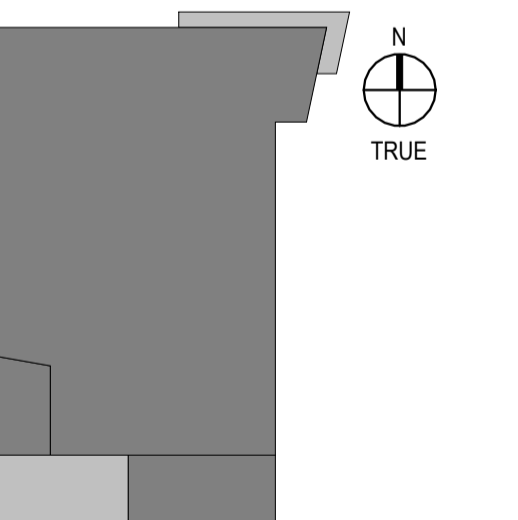


ISSUANCE AND REVISIONS

DATE	DESCRIPTION
09/18/2023	DPD ZONING SUBMITTAL

**DPD ZONING SUBMITTAL
FOR PORTION OF BLOCK 3
OF MILWAUKEE BUCKS
ARENA DEVELOPMENT - GPD**

KEY PLAN



SHEET INFORMATION

**PROGRESS DOCUMENTS
NOT FOR CONSTRUCTION**

These documents reflect progress and intent and may be subject to change, including additional detail. These are not final construction documents and shall not be used for final bidding or construction-related purposes.

PROJECT MANAGER MJL
PROJECT NUMBER 2-20225-03

ARCHITECTURAL
RENDERING

A3-0

© 2023 Epstein Uhen Architects, Inc.

1

2

3

4

5

6

7

1

2

3

4

5

6

7

E

D

C

B

A



VIEW LOOKING AT NORTH EAST CORNER OF MUSIC VENUE & PLAZA



milwaukee | madison | green bay | denver | atlanta



PROJECT INFORMATION

Frank Productions
Deer District (Block 3)

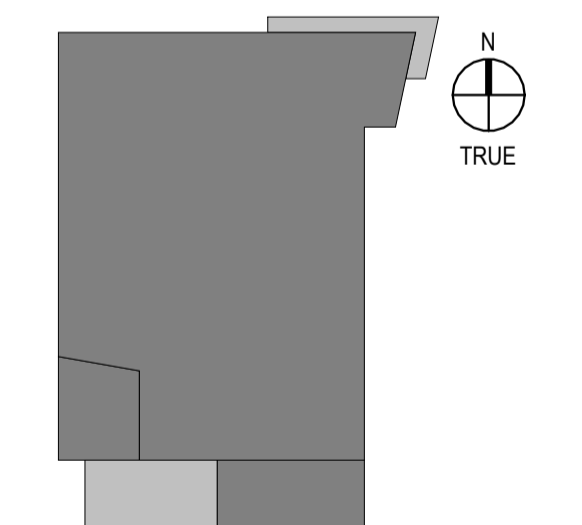


ISSUANCE AND REVISIONS

DATE	DESCRIPTION
09/18/2023	DPD ZONING SUBMITTAL

**DPD ZONING SUBMITTAL
FOR PORTION OF BLOCK 3
OF MILWAUKEE BUCKS
ARENA DEVELOPMENT - GPD**

KEY PLAN



SHEET INFORMATION

**PROGRESS DOCUMENTS
NOT FOR CONSTRUCTION**
These documents reflect progress and intent and may be subject to change, including additional detail. These are not final construction documents and shall not be used for final bidding or construction-related purposes.

PROJECT MANAGER MJL
PROJECT NUMBER 2-20225-03

**ARCHITECTURAL
RENDERING**

A3-1

© 2023 Epstein Uhen Architects, Inc.

1

2

3

4

5

6

7

1

2

3

4

5

6

7

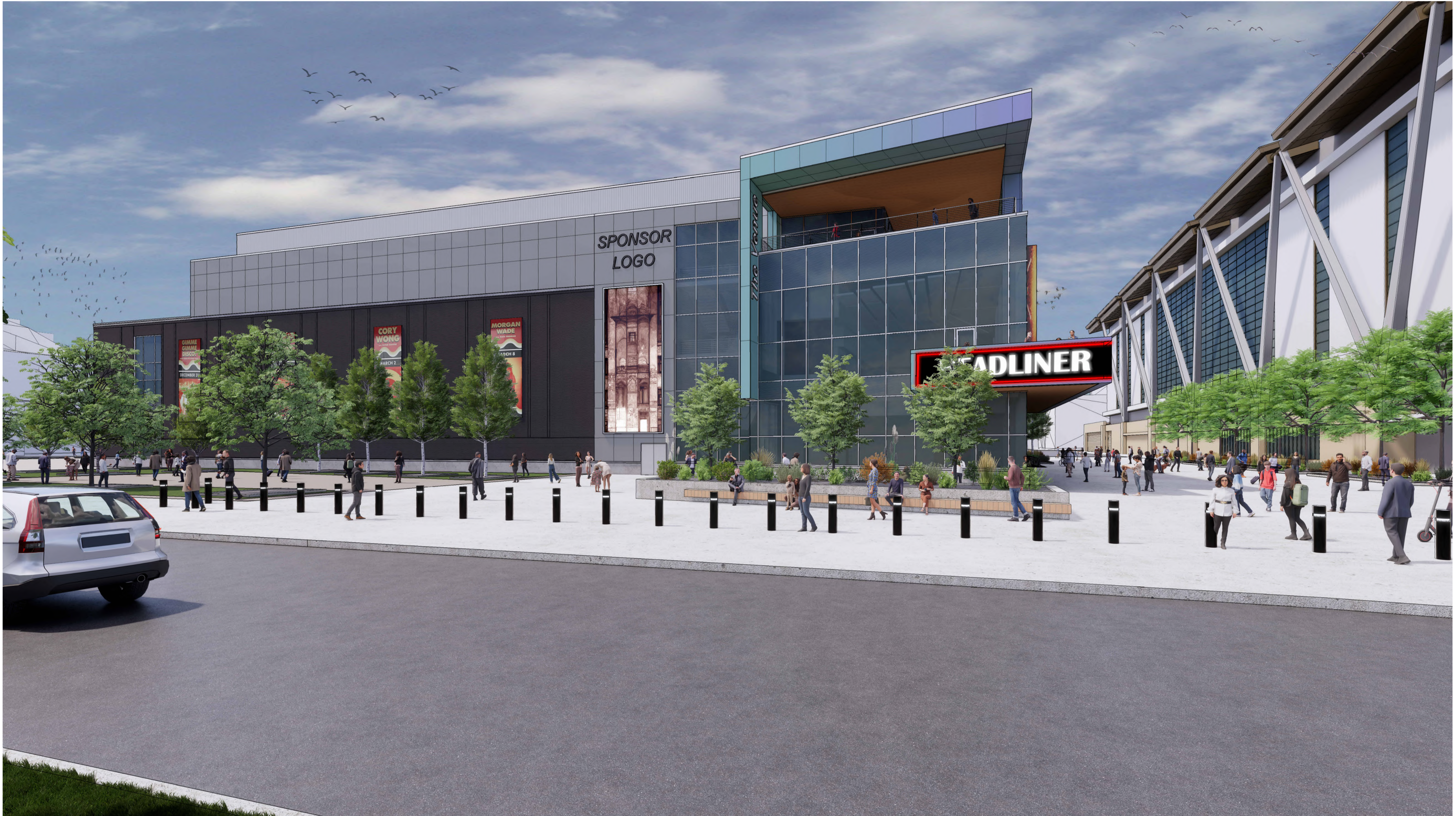
E

D

C

B

A



VIEW FROM VEL R. PHILLIPS LOOKING TOWARDS MUSIC VENUE & FISERV FORUM



milwaukee | madison | green bay | denver | atlanta



PROJECT INFORMATION
 Frank Productions
 Deer District (Block 3)

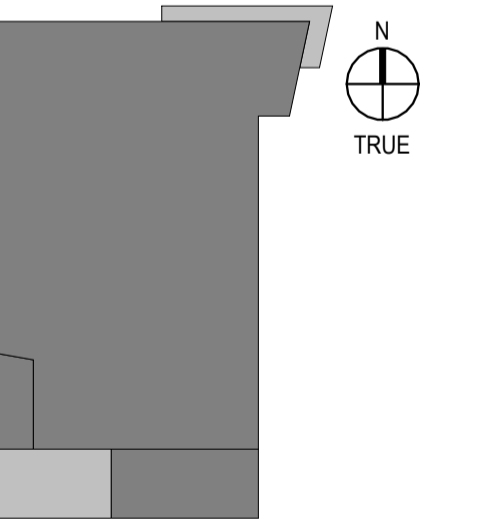


ISSUANCE AND REVISIONS

DATE	DESCRIPTION
09/18/2023	DPD ZONING SUBMITTAL

DPD ZONING SUBMITTAL
 FOR PORTION OF BLOCK 3
 OF MILWAUKEE BUCKS
 ARENA DEVELOPMENT - GPD

KEY PLAN



SHEET INFORMATION

**PROGRESS DOCUMENTS
 NOT FOR CONSTRUCTION**
 These documents reflect progress and intent and may be subject to change, including additional detail. These are not final construction documents and shall not be used for final bidding or construction-related purposes.

PROJECT MANAGER MJL
 PROJECT NUMBER 2-20225-03

ARCHITECTURAL
 RENDERING

A3-2

© 2023 Epstein Uhen Architects, Inc.

1

2

3

4

5

6

7

1

2

3

4

5

6

7

E

D

C

B

A



VIEW LOOKING AT NORTH FACADE AND PLAZA OF MUSIC VENUE



milwaukee | madison | green bay | denver | atlanta



PROJECT INFORMATION

Frank Productions
Deer District (Block 3)



ISSUANCE AND REVISIONS

DATE	DESCRIPTION
09/18/2023	DPD ZONING SUBMITTAL

DPD ZONING SUBMITTAL
FOR PORTION OF BLOCK 3
OF MILWAUKEE BUCKS
ARENA DEVELOPMENT - GPD

KEY PLAN



SHEET INFORMATION

**PROGRESS DOCUMENTS
NOT FOR CONSTRUCTION**

These documents reflect progress and intent and may be subject to change, including additional detail. These are not final construction documents and shall not be used for final bidding or construction-related purposes.

PROJECT MANAGER M.J.L.
PROJECT NUMBER 2-20225-03

ARCHITECTURAL
RENDERING

A3-3

© 2023 Epstein Uhen Architects, Inc.

1

2

3

4

5

6

7

1

2

3

4

5

6

7

E

D

C

B

A



VIEW LOOKING EAST FROM NORTHWEST CORNER OF MUSIC VENUE



milwaukee | madison | green bay | denver | atlanta



PROJECT INFORMATION

Frank Productions
Deer District (Block 3)

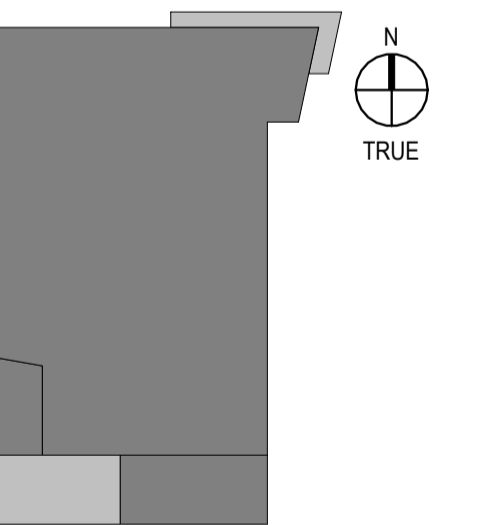


ISSUANCE AND REVISIONS

DATE	DESCRIPTION
09/18/2023	DPD ZONING SUBMITTAL

**DPD ZONING SUBMITTAL
FOR PORTION OF BLOCK 3
OF MILWAUKEE BUCKS
ARENA DEVELOPMENT - GPD**

KEY PLAN



SHEET INFORMATION

**PROGRESS DOCUMENTS
NOT FOR CONSTRUCTION**

These documents reflect progress and intent and may be subject to change, including additional detail. These are not final construction documents and shall not be used for final bidding or construction-related purposes.

PROJECT MANAGER MJL
PROJECT NUMBER 2-20225-03

**ARCHITECTURAL
RENDERING**

A3-4

© 2023 Epstein Uhen Architects, Inc.

1

2

3

4

5

6

7

1

2

3

4

5

6

7

E

D

C

B

A



AERIAL VIEW LOOKING AT NORTHEAST CORNER



milwaukee | madison | green bay | denver | atlanta



PROJECT INFORMATION

Frank Productions
Deer District (Block 3)

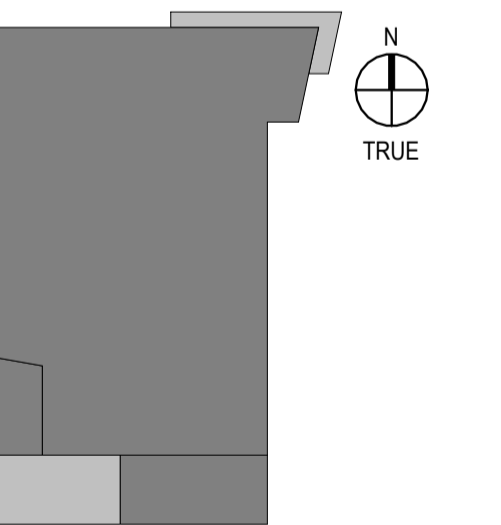


ISSUANCE AND REVISIONS

DATE	DESCRIPTION
09/18/2023	DPD ZONING SUBMITTAL

**DPD ZONING SUBMITTAL
FOR PORTION OF BLOCK 3
OF MILWAUKEE BUCKS
ARENA DEVELOPMENT - GPD**

KEY PLAN



SHEET INFORMATION

**PROGRESS DOCUMENTS
NOT FOR CONSTRUCTION**

These documents reflect progress and intent and may be subject to change, including additional detail. These are not final construction documents and shall not be used for final bidding or construction-related purposes.

PROJECT MANAGER MJL
PROJECT NUMBER 2-20225-03

**NORTHEAST AERIAL
RENDERING**

A4-0

© 2023 Epstein Uhen Architects, Inc.

1

2

3

4

5

6

7

1

2

3

4

5

6

7

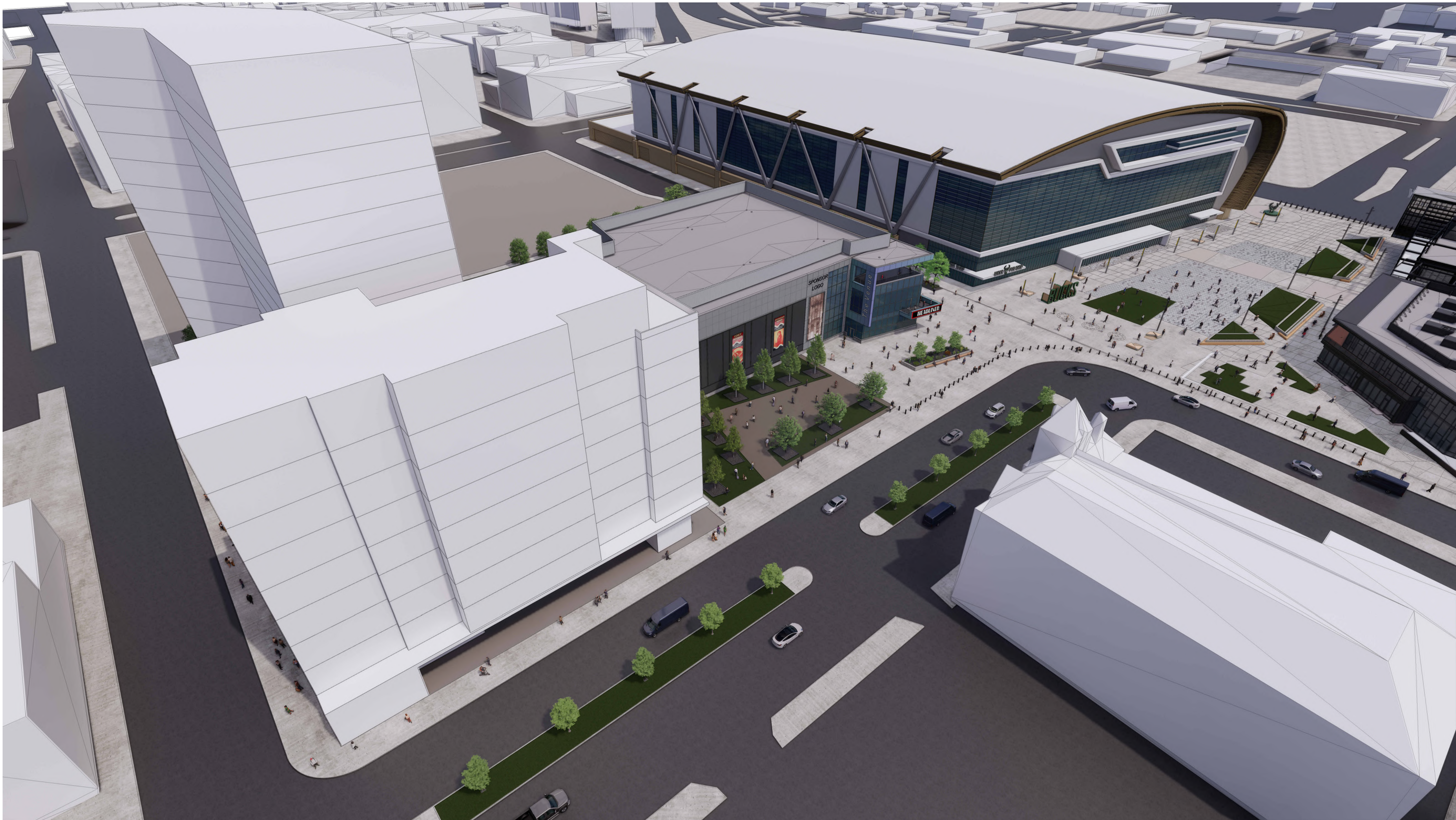
E

D

C

B

A



AERIAL VIEW LOOKING AT SOUTHEAST CORNER



milwaukee | madison | green bay | denver | atlanta



PROJECT INFORMATION

Frank Productions
Deer District (Block 3)

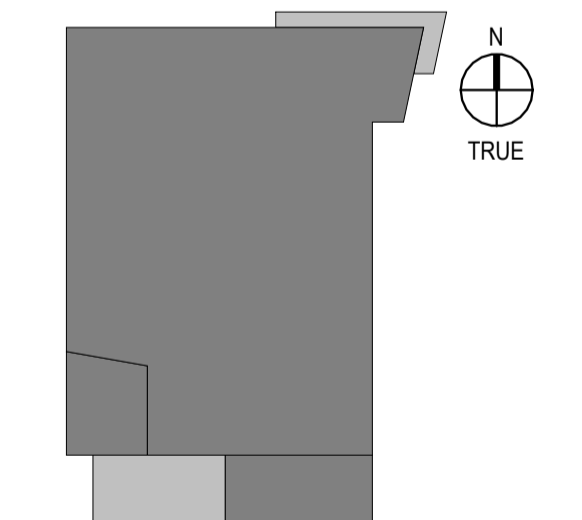


ISSUANCE AND REVISIONS

DATE	DESCRIPTION
09/18/2023	DPD ZONING SUBMITTAL

**DPD ZONING SUBMITTAL
FOR PORTION OF BLOCK 3
OF MILWAUKEE BUCKS
ARENA DEVELOPMENT - GPD**

KEY PLAN



SHEET INFORMATION

**PROGRESS DOCUMENTS
NOT FOR CONSTRUCTION**

These documents reflect progress and intent and may be subject to change, including additional detail. These are not final construction documents and shall not be used for final bidding or construction-related purposes.

PROJECT MANAGER MJL

PROJECT NUMBER 2-20225-03

**SOUTHEAST AERIAL
RENDERING**

A4-1

© 2023 Epstein Uhen Architects, Inc.

1

2

3

4

5

6

7

1

2

3

4

5

6

7

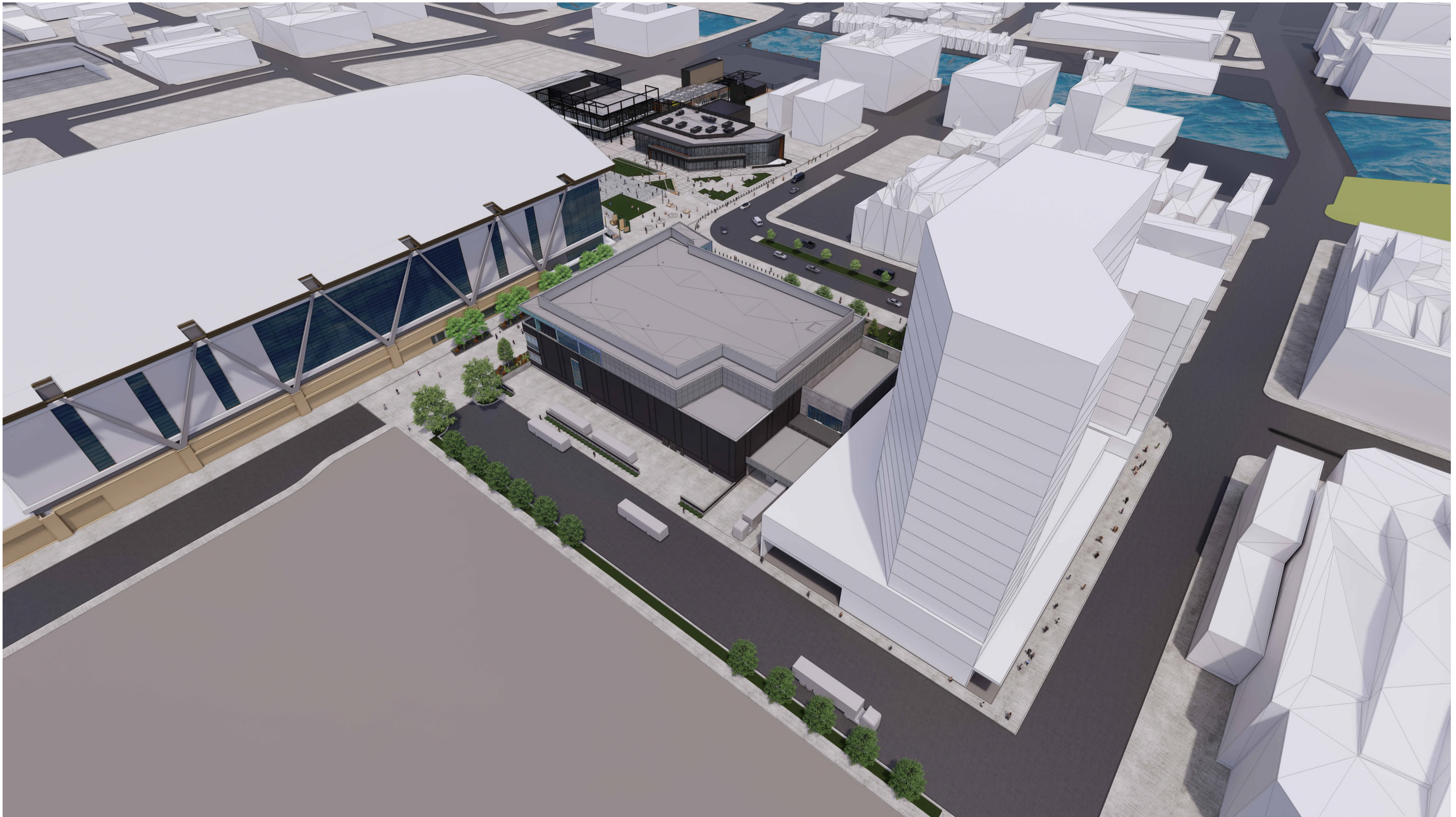
E

D

C

B

A



AERIAL VIEW LOOKING AT SOUTHWEST CORNER



milwaukee | madison | green bay | denver | atlanta



PROJECT INFORMATION
Frank Productions
Deer District (Block 3)

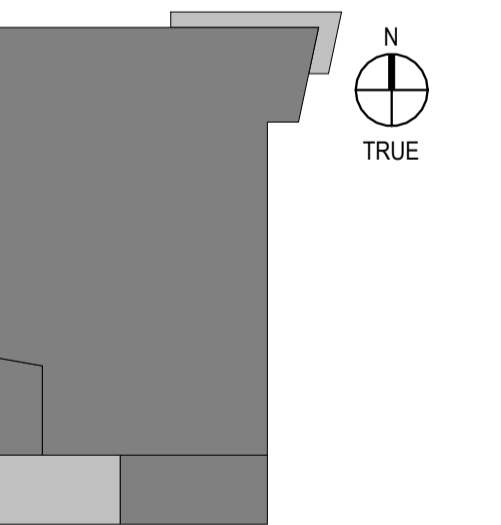


ISSUANCE AND REVISIONS

DATE	DESCRIPTION
09/18/2023	DPD ZONING SUBMITTAL

DPD ZONING SUBMITTAL
FOR PORTION OF BLOCK 3
OF MILWAUKEE BUCKS
ARENA DEVELOPMENT - GPD

KEY PLAN



SHEET INFORMATION

**PROGRESS DOCUMENTS
NOT FOR CONSTRUCTION**

These documents reflect progress and intent and may be subject to change, including additional detail. These are not final construction documents and shall not be used for final bidding or construction-related purposes.

PROJECT MANAGER: MJL
PROJECT NUMBER: 2-20225-03

**SOUTHWEST
AERIAL RENDERING**

A4-2

© 2023 Epstein Uhen Architects, Inc.

1

2

3

4

5

6

7