

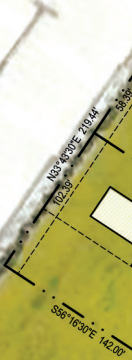


NORTH LAKE DRIVE

N TERRACE AVE

500 ft.

750 ft.



2381 N. TERRACE AVENUE

OCTOBER 11, 2019
TERRACE AVENUE HOME

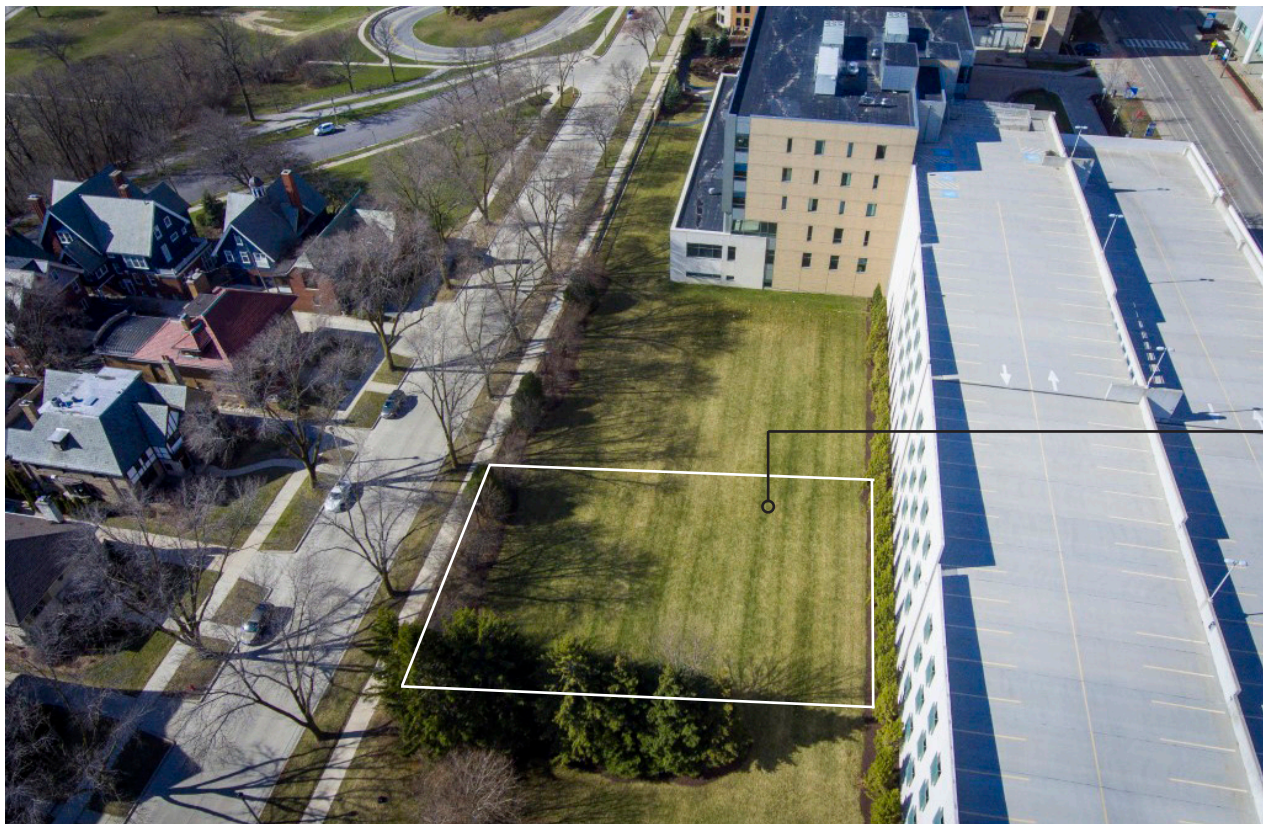




SITE



SITE



SITE



SITE

PORCH CANOPY WITH WOOD SOFIT
ALU. CLAD WOOD WINDOWS W/ "SHADOW BOX" JAMBS
LIGHT COLORED MODULAR BRICK
WOOD SIDING WITH DARK OPAQUE STAIN
PARTIAL HEIGHT STEEL RAILING
PATTERNED END FACE EXTENDED BRICK

PIVOTING GLASS DOOR WITH DIVIDED LITE
SKYLIGHT ON ROOF CURB BEYOND
OPERABLE CASEMENT WINDOWS WITH DIVIDED LITE
COPPER METAL WORK AWNING
OPEN TO BEYOND, PORTE COCHERE



EAST (FRONT) ELEVATION

SHINGLE STYLE ROOF, MATERIAL TBD
ALU. CLAD WOOD WINDOWS W/ "SHADOW BOX" JAMBS
LIGHT COLORED MODULAR BRICK
INNER WALL, WOOD SIDING WITH DARK OPAQUE STAIN
COPPER METAL WORK AWNING
HALF ROUND METAL GUTTER

GREEN ROOF SYSTEM
CONCRETE STOOP
WOOD SIDING WITH DARK OPAQUE STAIN
WOOD PANEL GARAGE DOOR



NORTH ELEVATION

ALU. CLAD WOOD WINDOWS W/ "SHADOW BOX" JAMBS
 WOOD ATTIC VENT ACCENT
 LIGHT COLORED MODULAR BRICK
 WOOD SIDING WITH DARK OPAQUE STAIN
 LOW SLOPED ROOF WITH SKYLIGHT BEYOND
 PORTE COCHERE

WOOD SIDING WITH DARK OPAQUE STAIN
 PARTIAL HEIGHT STEEL RAILING
 FOLDABLE TYPE PATIO DOORS
 WOOD DECK WITH METAL GAURD RAIL, BEYOND



WEST (REAR) ELEVATION

- SOLAR PANELS, ON SHINGGLE STYLE ROOF, MATERIAL TBD
- SWING TYPE PATIO DOORS
- LIGHT COLORED MODULAR BRICK
- WOOD SIDING WITH DARK OPAQUE STAIN
- WOOD DECK WITH METAL GAURD RAIL
- WOOD SIDING WITH DARK OPAQUE STAIN
- PATTERNED END FACE EXTENDED BRICK
- METAL RAIL, PARTIAL HEIGHT



SOUTH ELEVATION



PERSPECTIVE WITH DIMENSIONS



OCTOBER 11, 2019
TERRACE AVENUE HOME

KA





OCTOBER 11, 2019
TERRACE AVENUE HOME

KA













OCTOBER 11, 2019
TERRACE AVENUE HOME

KA