

To Whom It May Concern,

CITY OF MILWAUKEE

2023 SEP 15 PM 12:16

CITY CLERK'S OFFICE

My name is John Meier and I am contacting you in regards to a car accident I was in with a Milwaukee Parking Authority employee on Friday September 1st at about 12:00 pm. I was on 27th street heading north and I turned left which would be westbound on Oklahoma Ave. Shortly after turning onto Oklahoma Avenue, I turned right to pull into St. Lukes Hospital parking lot. The parking authority employee was pulled over and parked on the north (right) side of the road facing west. As I pulled in, she left her parked position, pulling forward, and t-boned my passenger side hitting both the front and back passenger doors, and put a hole in the runner board that is located directly under both those same doors. Nobody was hurt in this incident and the police were called but we were told that they would not be coming to the scene. The parking authority employee called her supervisor who came to the scene and told me that I would have to file a claim with the city of Milwaukee. With this letter I have included multiple photos with drawn on arrows to show the whole situation and the two required body shop estimates. Please let me know if there is anything else I can do and what the next steps would be in regards to moving forward. Thank you for your time.

Thanks,

John Meier

2023 SEP 15 PM 12:16
CITY CLERK'S OFFICE

Scott's American Collision
 1325 Washington Rd, Kenosha, WI 53140
 Phone: (262) 657-1160

Workfile ID: 2d7b1f6a
 PartsShare: 7xBQ3L

Preliminary Estimate

Customer: Meier, John

Written By: Scott Lundy

Insured: Meier, John
 Type of Loss:
 Point of Impact: 03 Right T-Bone (Right Side)

Policy #:
 Date of Loss:

Claim #:
 Days to Repair: 0

Owner:
 Meier, John
 (262) 716-5899 Cell

Inspection Location:
 Scott's American Collision
 1325 Washington Rd
 Kenosha, WI 53140
 Repair Facility
 (262) 657-1160 Business

Insurance Company:

CITY CLERK'S OFFICE
 2023 SEP 15 PM 12:13
 CITY OF MILWAUKEE

VEHICLE

2019 BUIC Enclave Essence AWD 4D UTV 6-3.6L Gasoline Direct Injection

VIN: 5GAEVAKW2KJ211312	Interior Color:	Mileage In:	Vehicle Out:
License:	Exterior Color:	Mileage Out:	
State: WI	Production Date:	Condition:	Job #:

TRANSMISSION

Automatic Transmission
 4 Wheel Drive

POWER

Power Steering
 Power Brakes
 Power Windows
 Power Locks
 Power Mirrors
 Heated Mirrors
 Power Driver Seat
 Power Passenger Seat

DECOR

Dual Mirrors
 Privacy Glass
 Console/Storage

CONVENIENCE

Air Conditioning

Intermittent Wipers

Tilt Wheel
 Cruise Control
 Rear Defogger
 Keyless Entry
 Alarm
 Message Center
 Steering Wheel Touch Controls
 Rear Window Wiper
 Telescopic Wheel
 Climate Control
 Dual Air Condition
 Backup Camera
 Parking Sensors
 Remote Starter
 Home Link

RADIO

AM Radio

FM Radio

Stereo
 Search/Seek
 Auxiliary Audio Connection
 Satellite Radio

SAFETY

Drivers Side Air Bag
 Passenger Air Bag
 Anti-Lock Brakes (4)
 4 Wheel Disc Brakes
 Traction Control
 Stability Control
 Front Side Impact Air Bags
 Head/Curtain Air Bags
 Communications System
 Hands Free Device
 Xenon or L.E.D. Headlamps
 Blind Spot Detection

ROOF

Luggage/Roof Rack

SEATS

Bucket Seats
 Heated Seats
 3rd Row Seat

WHEELS

Aluminum/Alloy Wheels

PAINT

Clear Coat Paint

OTHER

Rear Spoiler
 Signal Integrated Mirrors

TRUCK

Power Trunk/Liftgate

Preliminary Estimate

Customer: Meier, John

2019 BUIC Enclave Essence AWD 4D UTV 6-3.6L Gasoline Direct Injection

Line	Oper	Description	Part Number	Qty	Extended Price \$	Labor	Paint
1		PILLARS, ROCKER & FLOOR					
2	Repl	Step Assembly satin nickle	84527214	1	935.00	2.2	4.8
3		Add for Clear Coat					1.0
4		FRONT DOOR					
5	* Rpr	RT Door shell				7.0	2.1
6		Add for Clear Coat					0.8
7	Repl	RT Lower molding	23204988	1	93.50	0.3	
8	R&I	RT Mirror assy w/o surround view, w/blind spot w/o pwr fold				0.3	
9	R&I	RT Belt molding				0.3	
10	R&I	RT Handle, outside				0.4	
11	R&I	RT R&I trim panel				0.5	
12		REAR DOOR					
13	Repl	RT Door shell	84697858	1	1,075.00	4.5	3.1
14		Overlap Major Adj. Panel					-0.4
15		Add for Clear Coat					0.5
16	Repl	RT Lower molding	23204999	1	85.22	0.3	
17	R&I	RT R&I trim panel				Incl.	
18		QUARTER PANEL					
19	Blnd	RT Quarter panel					1.3
20	R&I	RT Quarter glass Buick				1.6	
21	* R&I	RT Upper qtr trim shale				Incl.	
22	* R&I	RT Rear qtr trim w/o speaker shale				0.2	
23	R&I	RT Applique				0.3	
24		REAR LAMPS					
25	R&I	RT Tail lamp				0.2	
26		REAR BUMPER					
27	R&I	R&I bumper cover				2.2	
28	R&I	RT Side cover				0.3	
29	#	Subl Hazardous waste removal		1	3.50 T		
30	#	Repl Cover Car		1	5.00 T		
31	#	Repl Corrosion protection primer		1	T		
32	#	Mask jams/openings		1	T	1.0	
33	#	Repl PreScan		1		0.5 M	
34	#	Repl PostScan		1		0.5 M	
SUBTOTALS					2,197.22	22.6	13.2

Preliminary Estimate

Customer: Meier, John

2019 BUIC Enclave Essence AWD 4D UTV 6-3.6L Gasoline Direct Injection

ESTIMATE TOTALS

Category	Basis	Rate	Cost \$
Parts			2,188.72
Body Labor	21.6 hrs @	\$ 65.00 /hr	1,404.00
Paint Labor	13.2 hrs @	\$ 65.00 /hr	858.00
Mechanical Labor	1.0 hrs @	\$ 134.95 /hr	134.95
Paint Supplies	13.2 hrs @	\$ 45.00 /hr	594.00
Miscellaneous			8.50
Subtotal			5,188.17
Sales Tax	\$ 5,188.17 @	5.5000 %	285.35
Grand Total			5,473.52
Deductible			0.00
CUSTOMER PAY			0.00
INSURANCE PAY			5,473.52

MyPriceLink Estimate ID / Quote ID:

1128758563120881664 / 129018347

MOTOR VEHICLE REPAIR PRACTICES ARE REGULATED BY CHAPTER ATCP 132, WIS. ADM. CODE, ADMINISTERED BY THE BUREAU OF CONSUMER PROTECTION, WISCONSIN DEPT. OF AGRICULTURE, TRADE AND CONSUMER PROTECTION, P.O. BOX 8911, MADISON, WISCONSIN 53708-8911.

Preliminary Estimate

Customer: Meier, John

2019 BUIC Enclave Essence AWD 4D UTV 6-3.6L Gasoline Direct Injection

Estimate based on MOTOR CRASH ESTIMATING GUIDE and potentially other third party sources of data. Unless otherwise noted, (a) all items are derived from the Guide DR1AE18, CCC Data Date 09/01/2023, and potentially other third party sources of data; and (b) the parts presented are OEM-parts. OEM parts are manufactured by or for the vehicle's Original Equipment Manufacturer (OEM) according to OEM's specifications for U.S. distribution. OEM parts are available at OE/Vehicle dealerships or the specified supplier. OPT OEM (Optional OEM) or ALT OEM (Alternative OEM) parts are OEM parts that may be provided by or through alternate sources other than the OEM vehicle dealerships with discounted pricing. Asterisk (*) or Double Asterisk (**) indicates that the parts and/or labor data provided by third party sources of data may have been modified or may have come from an alternate data source. Tilde sign (~) items indicate MOTOR Not-Included Labor operations. The symbol (<>) indicates the refinish operation WILL NOT be performed as a separate procedure from the other panels in the estimate. Non-Original Equipment Manufacturer aftermarket parts are described as Non OEM, A/M or NAGS. Used parts are described as LKQ, RCY, or USED. Reconditioned parts are described as Recond. Recored parts are described as Recore. NAGS Part Numbers and Benchmark Prices are provided by National Auto Glass Specifications. Labor operation times listed on the line with the NAGS information are MOTOR suggested labor operation times. NAGS labor operation times are not included. Pound sign (#) items indicate manual entries.

Some 2023 vehicles contain minor changes from the previous year. For those vehicles, prior to receiving updated data from the vehicle manufacturer, labor and parts data from the previous year may be used. The CCC ONE estimator has a list of applicable vehicles. Parts numbers and prices should be confirmed with the local dealership.

The following is a list of additional abbreviations or symbols that may be used to describe work to be done or parts to be repaired or replaced:

SYMBOLS FOLLOWING PART PRICE:

m=MOTOR Mechanical component. s=MOTOR Structural component. T=Miscellaneous Taxed charge category. X=Miscellaneous Non-Taxed charge category.

SYMBOLS FOLLOWING LABOR:

D=Diagnostic labor category. E=Electrical labor category. F=Frame labor category. G=Glass labor category. M=Mechanical labor category. S=Structural labor category. (numbers) 1 through 4=User Defined Labor Categories.

OTHER SYMBOLS AND ABBREVIATIONS:

Adj.=Adjacent. Algn.=Align. ALU=Aluminum. A/M=Aftermarket part. Blnd=Blend. BOR=Boron steel. CAPA=Certified Automotive Parts Association. D&R=Disconnect and Reconnect. HSS=High Strength Steel. HYD=Hydroformed Steel. Incl.=Included. LKQ=Like Kind and Quality. LT=Left. MAG=Magnesium. Non-Adj.=Non Adjacent. NSF=NSF International Certified Part. O/H=Overhaul. Qty=Quantity. Refn=Refinish. Repl=Replace. R&I=Remove and Install. R&R=Remove and Replace. Rpr=Repair. RT=Right. SAS=Sandwiched Steel. Sect=Section. Subl=Sublet. UHS=Ultra High Strength Steel. N=Note(s) associated with the estimate line.

CCC ONE Estimating - A product of CCC Intelligent Services Inc.

The following is a list of abbreviations that may be used in CCC ONE Estimating that are not part of the MOTOR CRASH ESTIMATING GUIDE:

BAR=Bureau of Automotive Repair. EPA=Environmental Protection Agency. NHTSA= National Highway Transportation and Safety Administration. PDR=Paintless Dent Repair. VIN=Vehicle Identification Number.



**Gerber Collision & Glass -
Kenosha/Washington Rd.**

Highly Wreck-ommended
5419 Washington Rd, Kenosha, WI 53144
Phone: (262) 657-8028

Workfile ID: 6bb75dc0
Federal ID: 51-0394062
State ID: 0040000230032-01
Federal EPA: N/A
State EPA: N/A

Preliminary Estimate

Customer: MEIER, JOHN

Written By: Robert Thomas

Insured: MEIER, JOHN
Type of Loss:
Point of Impact: 03 Right T-Bone (Right Side)

Policy #:
Date of Loss:

Claim #:
Days to Repair: 0

Owner:
MEIER, JOHN

10356 - 256TH AVE
TREVOR, WI 53179
(262) 716-5899 Cell

Inspection Location:
Gerber Collision & Glass -
Kenosha/Washington Rd.
5419 Washington Rd
Kenosha, WI 53144
Repair Facility
(262) 657-8028 Business

Insurance Company:

CITY CLERK'S OFFICE
MILWAUKEE
SEP 15 PM 12:13

OFFICE OF CITY CLERK
MILWAUKEE
SEP 15 2023 12:13 PM

VEHICLE

2019 BUIC Enclave Essence AWD 4D UTV 6-3.6L Gasoline Direct Injection black

VIN: 5GAEVAKW2KJ211312 Interior Color: Mileage In: 71,047 Vehicle Out:
License: GB8616 Exterior Color: black Mileage Out:
State: WI Production Date: Condition: Job #:

TRANSMISSION

Automatic Transmission
4 Wheel Drive

POWER

Power Steering
Power Brakes
Power Windows
Power Locks
Power Mirrors
Heated Mirrors
Power Driver Seat
Power Passenger Seat

DECOR

Dual Mirrors
Privacy Glass
Console/Storage

CONVENIENCE

Intermittent Wipers

Tilt Wheel
Cruise Control
Rear Defogger
Keyless Entry
Alarm
Message Center
Steering Wheel Touch Controls
Rear Window Wiper
Telescopic Wheel

Climate Control
Dual Air Condition

Backup Camera
Parking Sensors
Remote Starter
Home Link

RADIO

FM Radio

Stereo
Search/Seek
Auxiliary Audio Connection
Satellite Radio

SAFETY

Drivers Side Air Bag
Passenger Air Bag
Anti-Lock Brakes (4)
4 Wheel Disc Brakes
Traction Control
Stability Control
Front Side Impact Air Bags
Head/Curtain Air Bags
Communications System
Hands Free Device
Xenon or L.E.D. Headlamps

ROOF

Luggage/Roof Rack

SEATS

Bucket Seats
Heated Seats
3rd Row Seat

WHEELS

Aluminum/Alloy Wheels

PAINT

Clear Coat Paint

OTHER

Rear Spoiler
Signal Integrated Mirrors
TRUCK
Power Trunk/Liftgate

Get live updates at www.carwise.com/e/4ATw8p

Preliminary Estimate

Customer: MEIER, JOHN

2019 BUIC Enclave Essence AWD 4D UTV 6-3.6L Gasoline Direct Injection black

Air Conditioning

AM Radio

Blind Spot Detection

Preliminary Estimate

Customer: MEIER, JOHN

2019 BUIC Enclave Essence AWD 4D UTV 6-3.6L Gasoline Direct Injection black

Line	Oper	Description	Part Number	Qty	Extended Price \$	Labor	Paint
1		FRONT BUMPER & GRILLE					
2	R&I	R&I bumper assy				1.4	
3		FRONT LAMPS					
4	R&I	RT R&I headlamp assy				0.3	
5		FENDER					
6	Blnd	RT Fender					1.0
7	R&I	RT Fender liner				0.4	
8	R&I	RT Upper molding				0.1	
9	Repl	RT Lower molding	84358903	1	83.08	0.3	
10		PILLARS, ROCKER & FLOOR					
11	Repl	Step Assembly dark knight	84326060	1	860.00	2.2	4.8
12		Add for Clear Coat					1.0
13	* Rpr	RT Uniside panel				3.0	2.5
14		Add for Clear Coat					1.0
15		FRONT DOOR					
16	* Rpr	RT Door shell				3.0	2.1
17		Overlap Major Adj. Panel					-0.4
18		Add for Clear Coat					0.3
19		Add for Edging					0.5
20	* Rpr	RT Outer panel				8.0	Incl.
21	R&I	RT Belt molding				0.3	
22	Repl	RT Lower molding	23204988	1	93.50	0.3	
23	R&I	RT Mirror assy w/o surround view, w/blind spot w/o pwr fold				0.3	
24	R&I	RT Handle, outside				0.4	
25	R&I	RT R&I trim panel				0.5	
26	* R&I	RT Water deflector				0.1	
27	R&I	RT Upper trim				0.2	
28		REAR DOOR					
29	* Repl	LKQ RT door assy +30%	84697858	1	1,147.25	4.5	3.1
30		Overlap Major Adj. Panel					-0.4
31	* Repl	Add for Clear Coat					0.5
32	Repl	RT Lower molding	23204999	1	85.22	0.3	
33	# Rpr	transfer usable p[arts fro old door				2.5	
34	Refn	RT Upper hinge					0.3
35	* Repl	Add for Clear Coat					0.1
36	Refn	RT Lower hinge					0.3
37	* Repl	Add for Clear Coat					0.1
38		QUARTER PANEL					
39	Blnd	RT Quarter panel					1.3
40	* Subl	RT Quarter glass Buick		1	150.00 X		
41	# Refn	clear up and over					1.5
42	# Rpr	Rope Glass frt				0.5	

Preliminary Estimate

Customer: MEIER, JOHN

2019 BUIC Enclave Essence AWD 4D UTV 6-3.6L Gasoline Direct Injection black

43	REAR LAMPS					
44	R&I	RT Tail lamp				0.2
45	REAR BUMPER					
46	R&I	RT Side cover				0.3
47	VEHICLE DIAGNOSTICS					
48	*	Rpr	Pre-repair scan		m	0.5 M
49	*	Rpr	Post-repair scan		m	0.5 M
50	#	Subl	Hazardous Waste	1	3.50 T	
51	#		Cover Car	1	10.00 T	
52	#	Repl	Corrosion Protection	1	5.00	
53	#	Rpr	Nib sand and buff			1.5
54	#	Refn	Color Tint			1.0
SUBTOTALS					2,437.55	31.6
						20.6

ESTIMATE TOTALS

Category	Basis	Rate	Cost \$
Parts			2,424.05
Body Labor	30.6 hrs @	\$ 72.00 /hr	2,203.20
Paint Labor	20.6 hrs @	\$ 72.00 /hr	1,483.20
Mechanical Labor	1.0 hrs @	\$ 127.00 /hr	127.00
Paint Supplies	20.6 hrs @	\$ 52.00 /hr	1,071.20
Body Supples	27.1 hrs @	\$ 10.00 /hr	271.00
Miscellaneous			13.50
Subtotal			7,593.15
Sales Tax	\$ 7,443.15 @	5.5000 %	409.37
Grand Total			8,002.52

MyPriceLink Estimate ID / Quote ID:
1129456505985179648 /

THIS FACILITY'S ESTIMATES ARE BASED UPON A COMBINATION OF INDUSTRY STANDARD FLAT RATE (TIME) MANUALS, ACTUAL TIME, OR CONDITION OF THE MOTOR VEHICLE TO DETERMINE COSTS. WE OFFER NEITHER A WARRANTY NOR GUARANTEE ON OR FOR RUST REPAIRS. ALL PART PRICES ARE SUBJECT TO CHANGE. THERE IS A POSSIBILITY THAT ADDITIONAL DAMAGES MAY BE DISCOVERED AFTER REPAIRS BEGIN. IF THE COST OF THESE ADDITIONAL DAMAGES EXCEEDS TEN PERCENT OF THE ORIGINAL ESTIMATE DOLLAR AMOUNT, YOU WILL BE CONTACTED AND ADVISED OF THE INCREASED COSTS.

MOTOR VEHICLE REPAIR PRACTICES ARE REGULATED BY CHAPTER ATCP 132, WIS. ADM. CODE, ADMINISTERED BY THE BUREAU OF CONSUMER PROTECTION, WISCONSIN DEPT. OF AGRICULTURE, TRADE AND CONSUMER PROTECTION, P.O. BOX 8911, MADISON, WISCONSIN 53708-8911.

WITHIN THIS ESTIMATE, A/M IS AN ABBREVIATION FOR AFTERMARKET.

Preliminary Estimate

Customer: MEIER, JOHN

2019 BUIC Enclave Essence AWD 4D UTV 6-3.6L Gasoline Direct Injection black

Estimate based on MOTOR CRASH ESTIMATING GUIDE and potentially other third party sources of data. Unless otherwise noted, (a) all items are derived from the Guide DR1AE18, CCC Data Date 09/01/2023, and potentially other third party sources of data; and (b) the parts presented are OEM-parts. OEM parts are manufactured by or for the vehicle's Original Equipment Manufacturer (OEM) according to OEM's specifications for U.S. distribution. OEM parts are available at OE/Vehicle dealerships or the specified supplier. OPT OEM (Optional OEM) or ALT OEM (Alternative OEM) parts are OEM parts that may be provided by or through alternate sources other than the OEM vehicle dealerships with discounted pricing. Asterisk (*) or Double Asterisk (**) indicates that the parts and/or labor data provided by third party sources of data may have been modified or may have come from an alternate data source. Tilde sign (~) items indicate MOTOR Not-Included Labor operations. The symbol (<>) indicates the refinish operation WILL NOT be performed as a separate procedure from the other panels in the estimate. Non-Original Equipment Manufacturer aftermarket parts are described as Non OEM, A/M or NAGS. Used parts are described as LKQ, RCY, or USED. Reconditioned parts are described as Recond. Recored parts are described as Recore. NAGS Part Numbers and Benchmark Prices are provided by National Auto Glass Specifications. Labor operation times listed on the line with the NAGS information are MOTOR suggested labor operation times. NAGS labor operation times are not included. Pound sign (#) items indicate manual entries.

Some 2023 vehicles contain minor changes from the previous year. For those vehicles, prior to receiving updated data from the vehicle manufacturer, labor and parts data from the previous year may be used. The CCC ONE estimator has a list of applicable vehicles. Parts numbers and prices should be confirmed with the local dealership.

The following is a list of additional abbreviations or symbols that may be used to describe work to be done or parts to be repaired or replaced:

SYMBOLS FOLLOWING PART PRICE:

m=MOTOR Mechanical component. s=MOTOR Structural component. T=Miscellaneous Taxed charge category. X=Miscellaneous Non-Taxed charge category.

SYMBOLS FOLLOWING LABOR:

D=Diagnostic labor category. E=Electrical labor category. F=Frame labor category. G=Glass labor category. M=Mechanical labor category. S=Structural labor category. (numbers) 1 through 4=User Defined Labor Categories.

OTHER SYMBOLS AND ABBREVIATIONS:

Adj.=Adjacent. Algn.=Align. ALU=Aluminum. A/M=Aftermarket part. Blend=Blend. BOR=Boron steel. CAPA=Certified Automotive Parts Association. D&R=Disconnect and Reconnect. HSS=High Strength Steel. HYD=Hydroformed Steel. Incl.=Included. LKQ=Like Kind and Quality. LT=Left. MAG=Magnesium. Non-Adj.=Non Adjacent. NSF=NSF International Certified Part. O/H=Overhaul. Qty=Quantity. Refn=Refinish. Repl=Replace. R&I=Remove and Install. R&R=Remove and Replace. Rpr=Repair. RT=Right. SAS=Sandwiched Steel. Sect=Section. Subl=Sublet. UHS=Ultra High Strength Steel. N=Note(s) associated with the estimate line.

CCC ONE Estimating - A product of CCC Intelligent Services Inc.

The following is a list of abbreviations that may be used in CCC ONE Estimating that are not part of the MOTOR CRASH ESTIMATING GUIDE:

BAR=Bureau of Automotive Repair. EPA=Environmental Protection Agency. NHTSA= National Highway Transportation and Safety Administration. PDR=Paintless Dent Repair. VIN=Vehicle Identification Number.

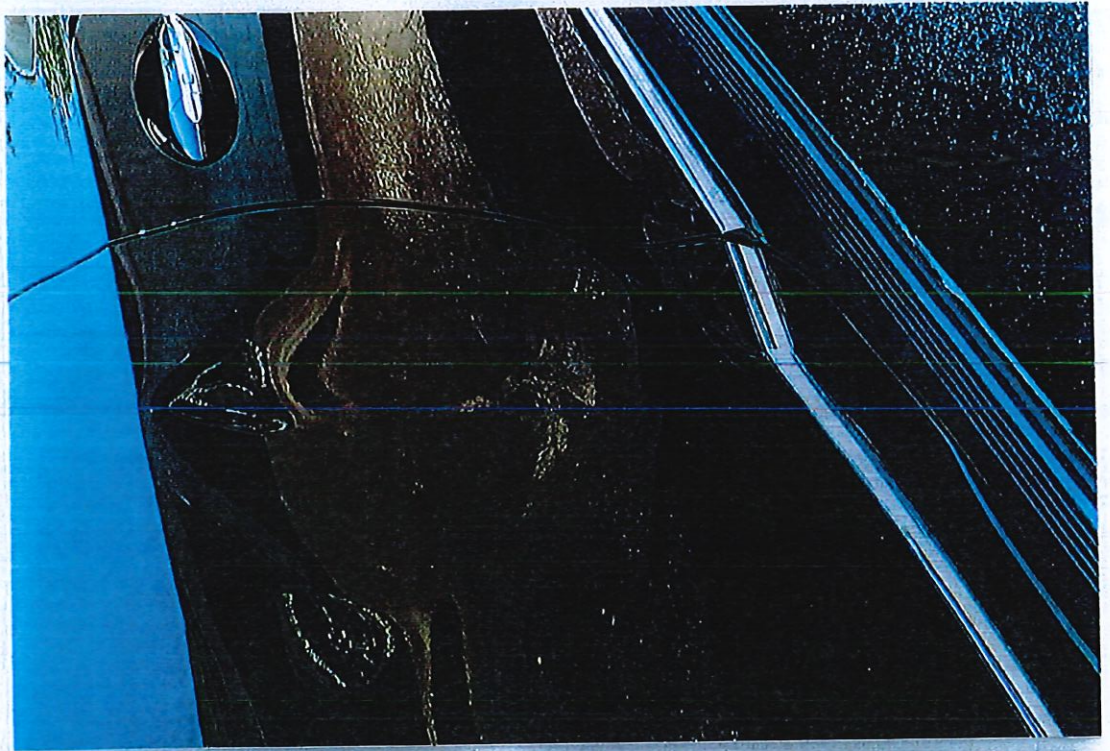
Preliminary Estimate

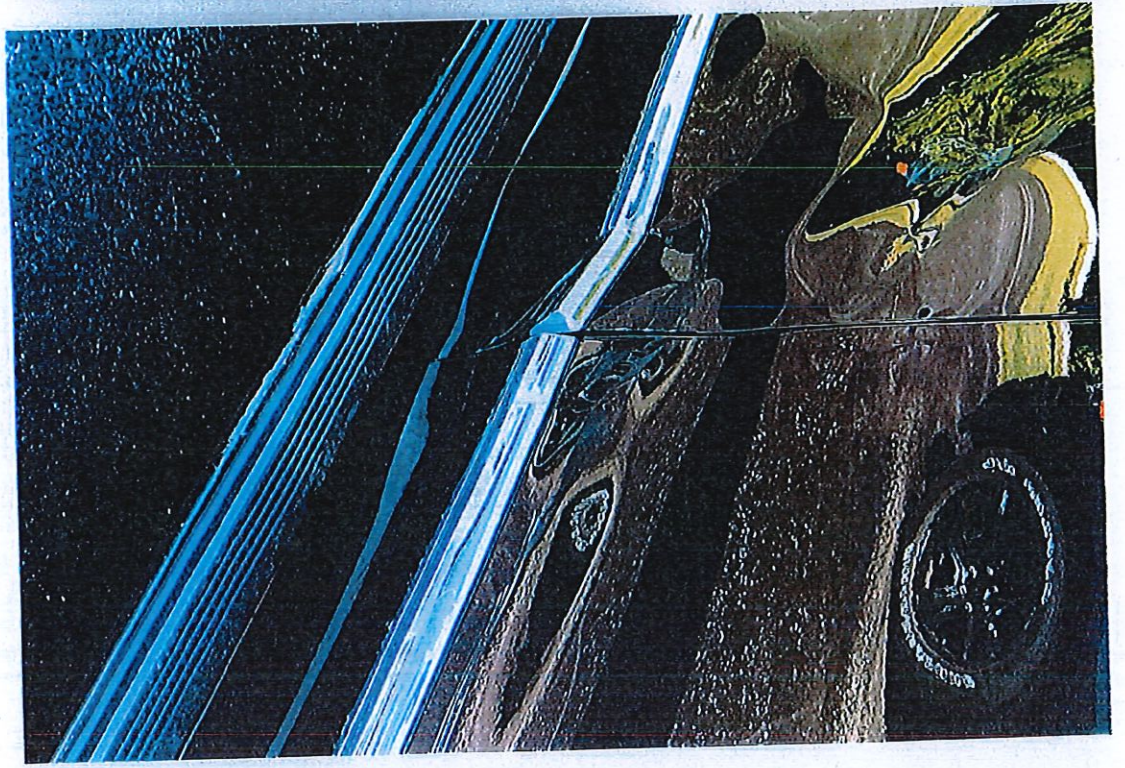
Customer: MEIER, JOHN

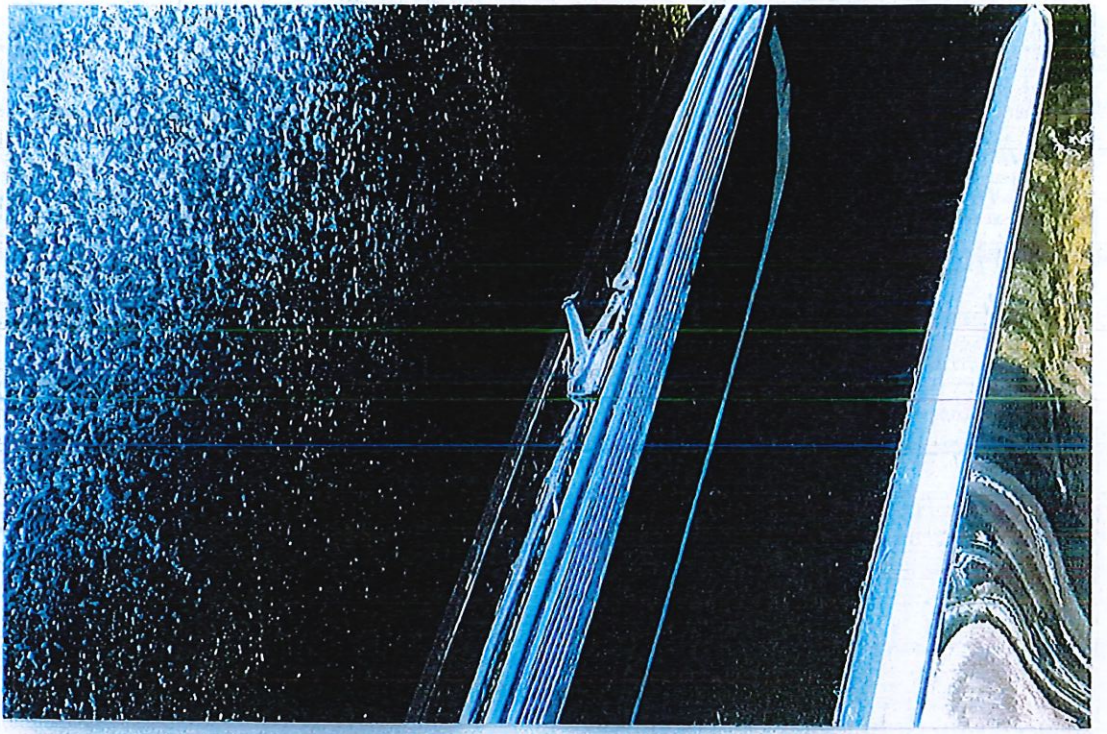
2019 BUIC Enclave Essence AWD 4D UTV 6-3.6L Gasoline Direct Injection black

PARTS SUPPLIER LIST

Line	Supplier	Description	Price
11	Kunes Buick GMC of Greenfield Inc. 3615 S.108th Street Greenfield, WI 53228	#84326060 Step Assembly dark knight Quote: 1626940761 Expires: 10/08/23	\$ 860.00
29	Bionic Auto Parts - Team PRP 4655 W. NORTH AVE. CHICAGO IL 60639 (773) 489-6020	#N0423091 LKQ RT door assy +30% RT SIDE DOOR-4S.5 Quote: CCC-189628734 Expires: 09/18/23	\$ 882.50

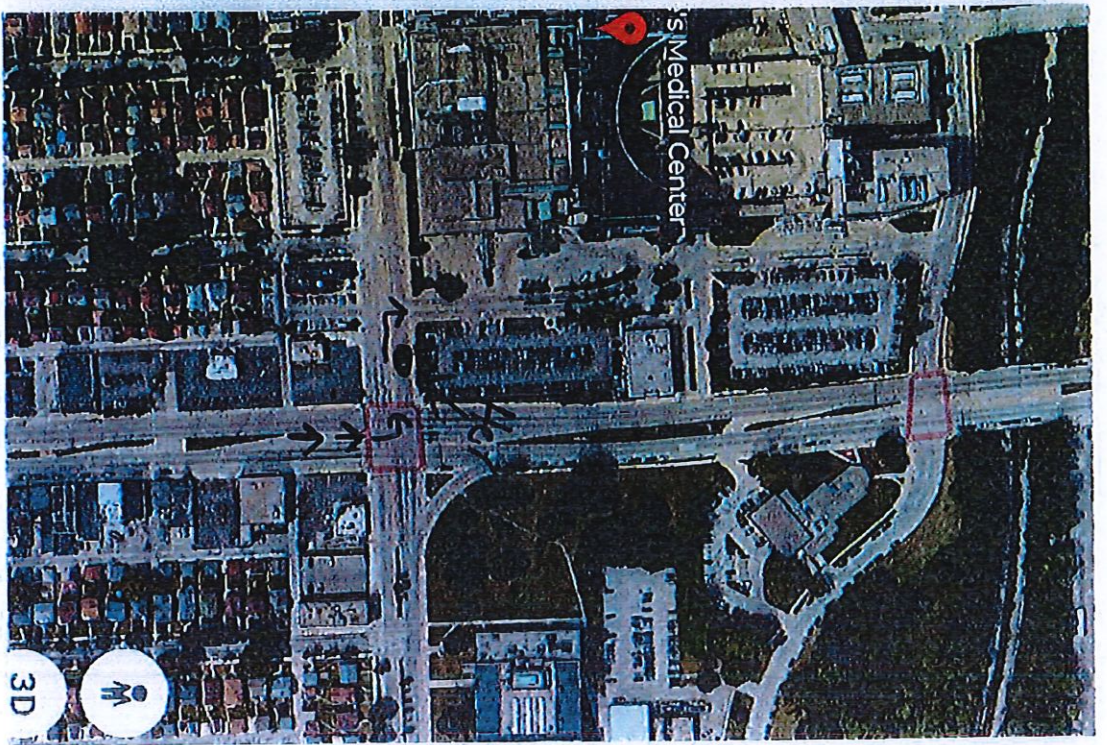
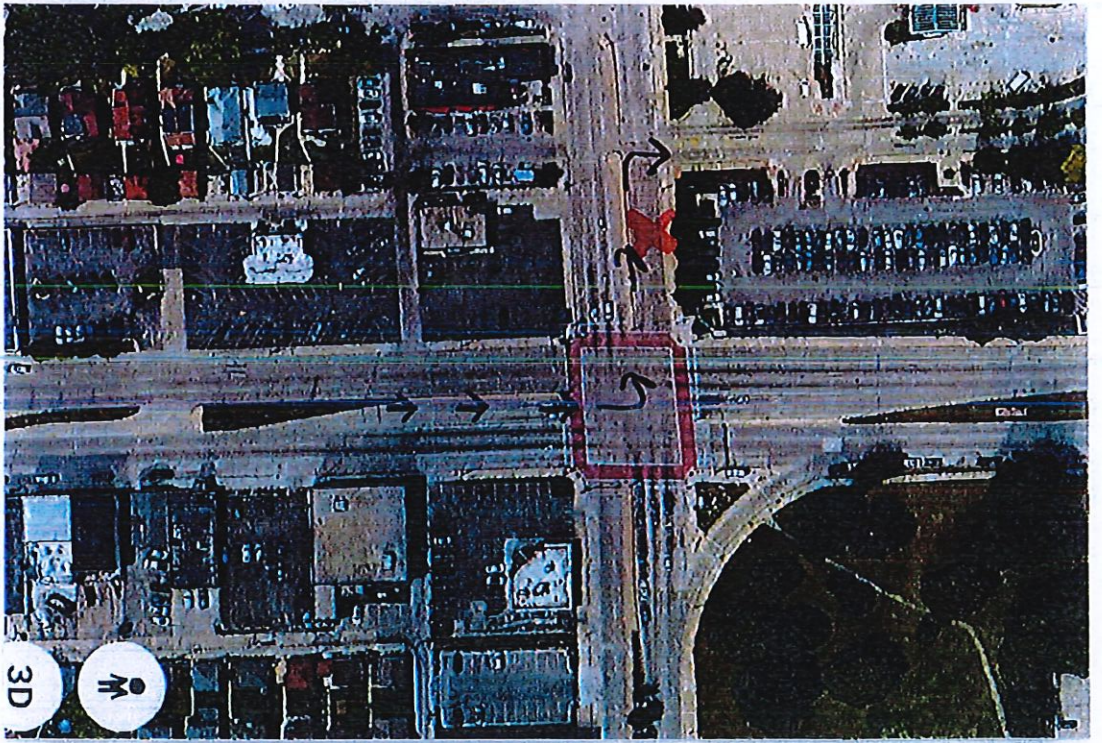






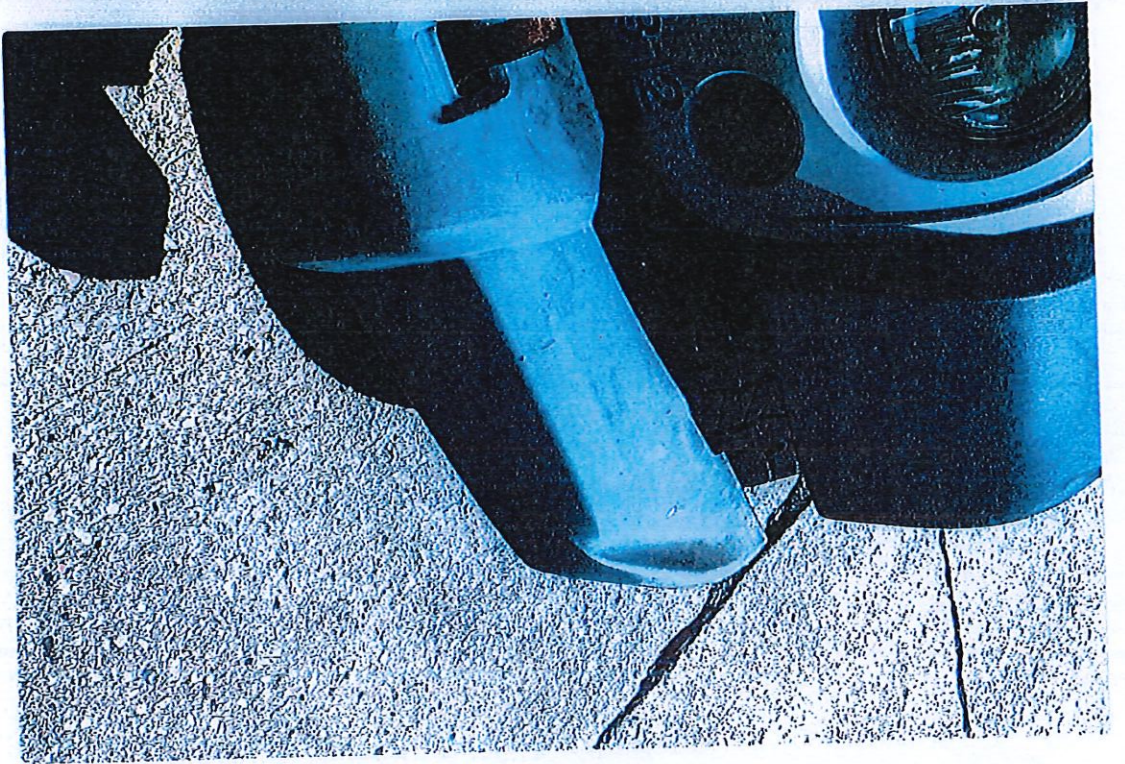
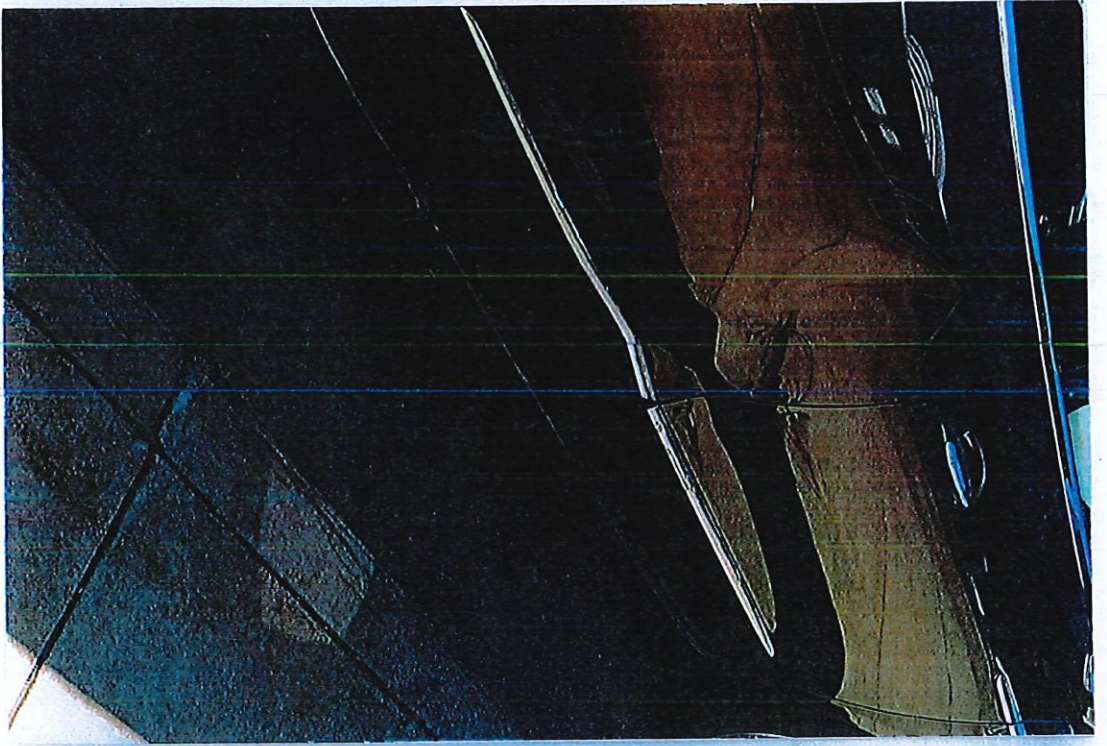
Damage to runner board

more pics of my damaged
vehicle.



I was driving in the pattern of the black arrows. The parking authority employee was parked where the Red "X" is and pulled out from her spot and hit my passenger side.

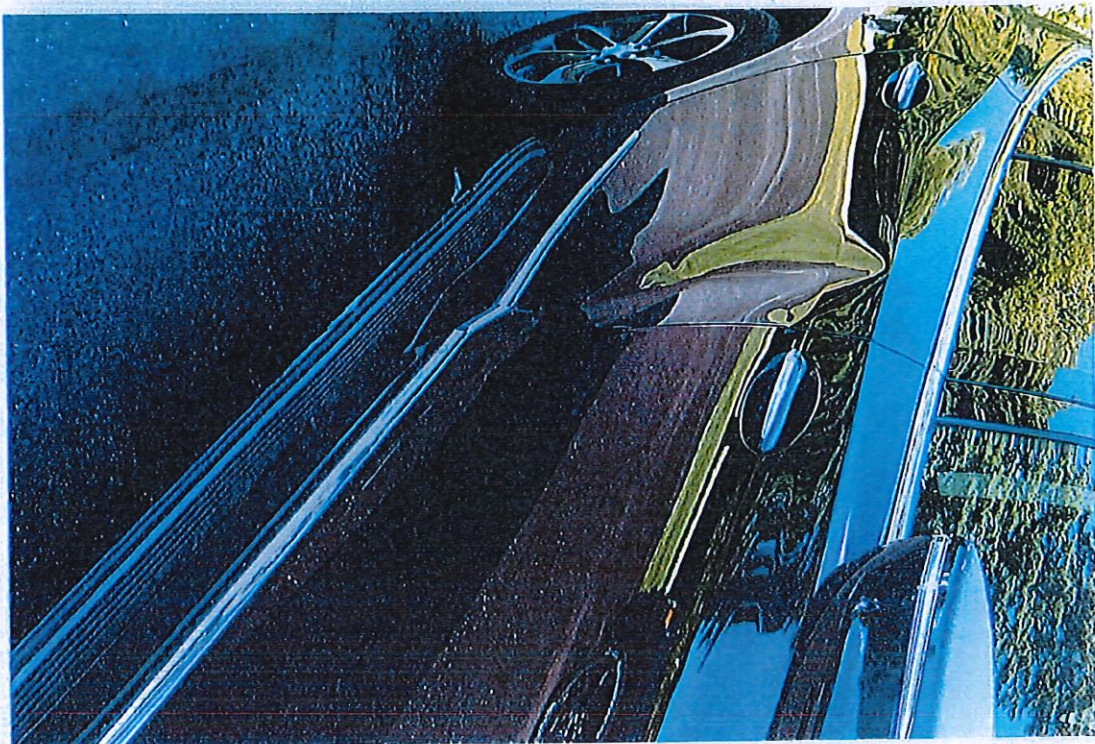
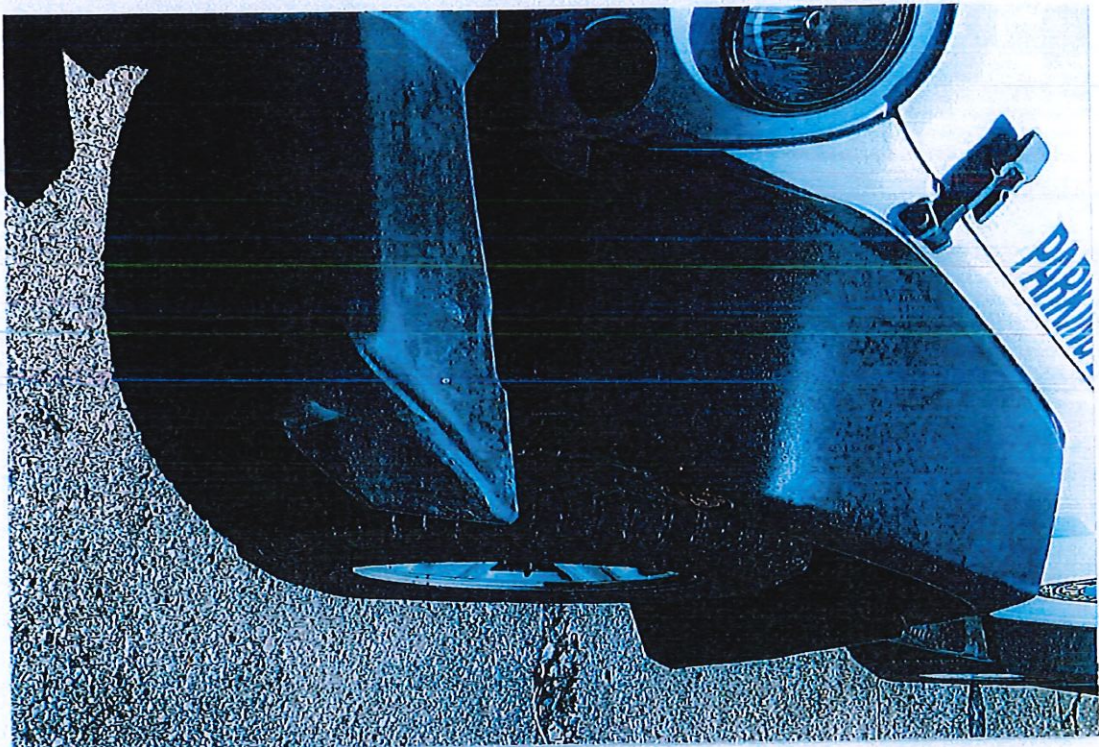
Another photo of the direction I was going and where the parking authority employee was parked. I indicated where she was with a filled in black dot.



2019 Buick Enclave

Damage to both front and back
passenger doors and runner
board.

Parkis Authority Vehicle



Parking Authority Vehicle

Damaged vehicle.