

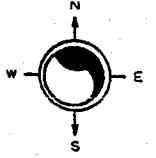
NE 18-7-22

ATLAS P. 311

311

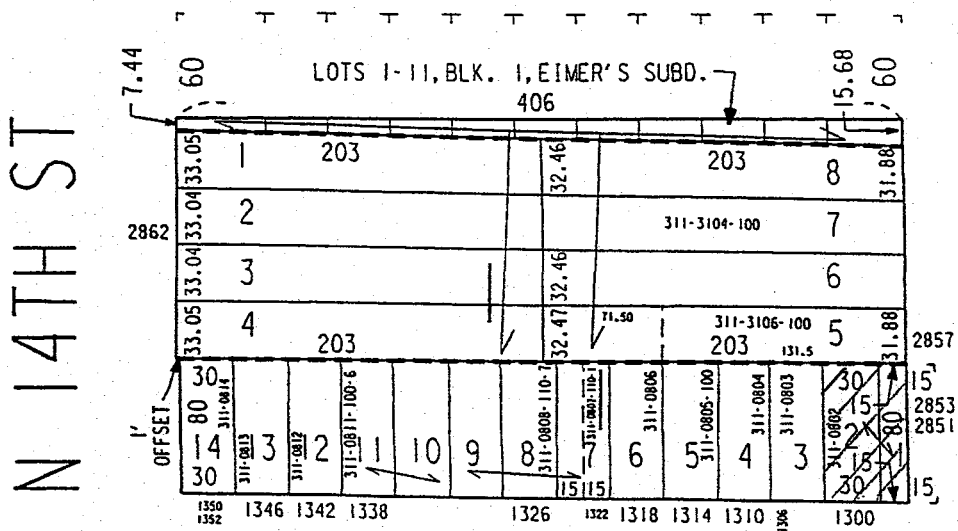
311-05

SCALE 1" = 80'



EIMER'S SUBDIVISION

W LOCUST ST



W ALBANY PL

DUNCK & HARTUNG'S SUBDIVISION

01-10-97

ASSESSOR'S OFFICE

NE 18-7-22

ATLAS P. 311

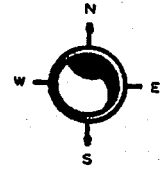
311

311-26

SCALE 1" = 80'

LUDINGTON'S SUBDIVISION

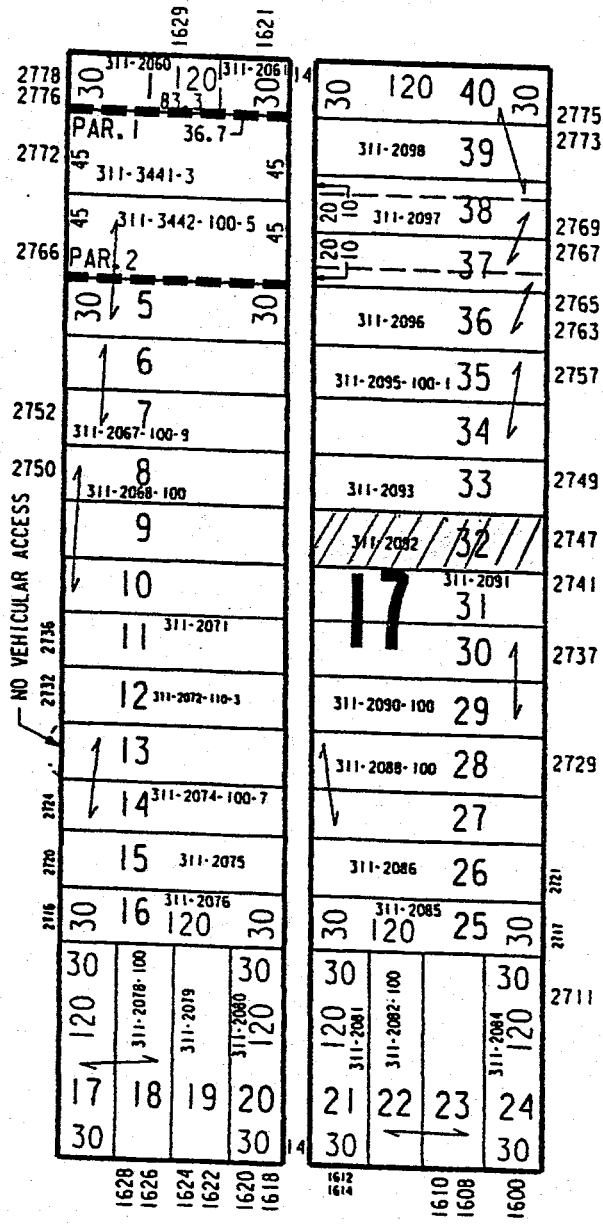
W HADLEY ST



C.S. MAP
NO. 6504

N 17TH ST

N 16TH ST

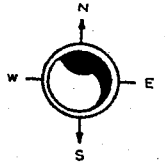


W CENTER ST

SW 07-7-22
ATLAS P. 285

285

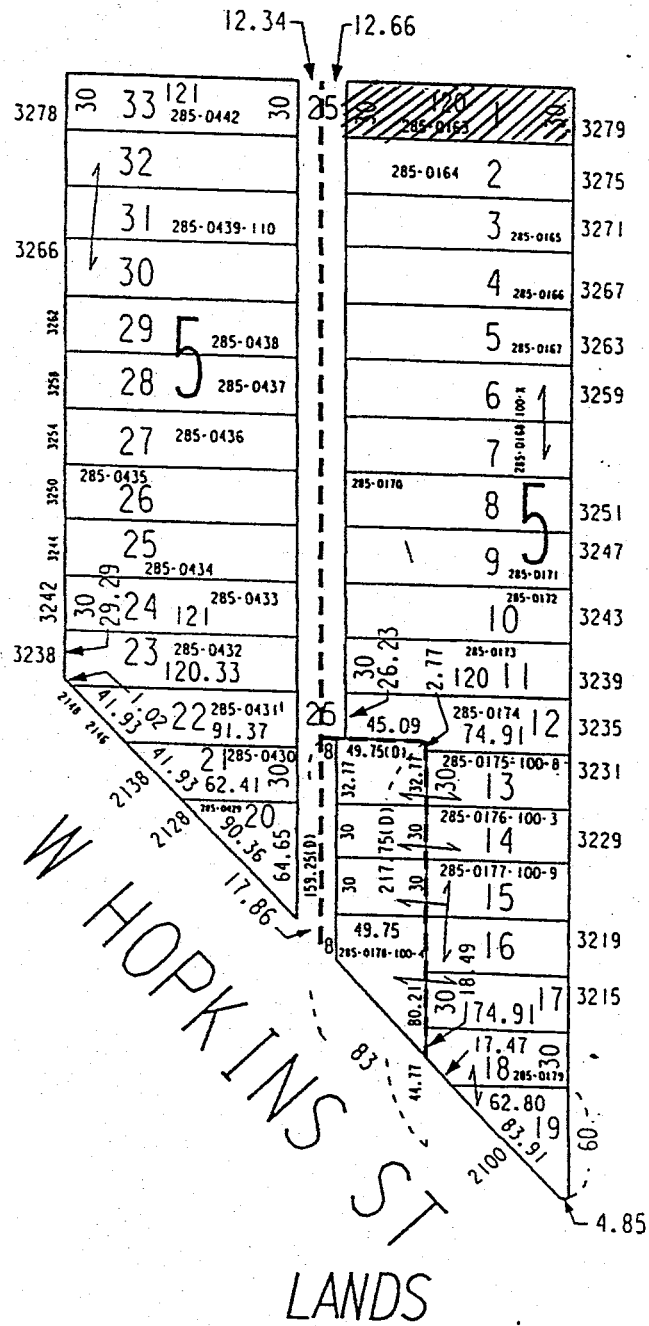
285-0
SCALE 1" = 80'



W CONCORDIA AV

CONTINUATION OF
BECKER'S SUBDIVISION

N 22ND ST



N 21ST ST
BECKER'S SUBDIVISION

NW 18-7-22

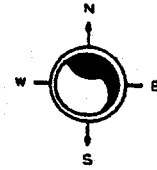
ATLAS P. 310

310

310-08

SCALE 1" = 80'

FLORENCE INV. CO'S SUBD NO. 1



W BURLEIGH ST

N 22ND ST

N 21ST ST

3078	32.29	20	125.06	15	52.25	300	125.06	310-0823	3003	32.21	3079
		19	125.07				125.07				3075
	30	310-0841	125.09	30	30	310-0824	125.09	21	30	32.21	
		18	310-0840			310-0825	125.11	3			3071
		17	310-0839			310-0826	125.12	4			3067
3066		16	310-0838			310-0827	125.13	5			3063
3062		15	310-0837			310-0828	125.15	6			3059
3058		14	125.15			310-0829	125.16	7			3057
3054	1	13	125.16			310-0830	125.18	8			3055
		12	310-0836-111-0			310-0831	125.19	9			3051
		11	125.18			310-0832-100-3	125.21	10			3047
3046	1	10	125.19			310-0834-100-4	125.21				3043
3042	30	9	125.21	30	30	125.21	125.23	1	30	30	
		8	310-0139			310-0122	125.24	2			3038
		7	125.24			310-0123	125.26	3			3035A
3034		6	310-0138			310-0124	125.28	4			3035
3030		5	125.26			310-0125	125.29	5			3031
		4	310-0137			310-0126	125.31	6			3027
3026		3	125.28			310-0127	125.33	7			3023
		2	310-0136			310-0128	125.34	8			3021
3022		1	125.29			310-0129	125.36	9			3019
		0	310-0135			310-0130	125.38	10			3017
3018		310-0134	125.31								3015
3014		310-0133	125.33								3013
3012		310-0132	125.34								3011
3010		310-0131	125.36								3009
3006	30	310-0130	125.38	30	30				30	30	3007
		36.71	125.38	36.71	36.75				36.78	36.78	3005
3000		11	125.38	15							3003

W CHAMBERS ST

BADGER STATE PARK

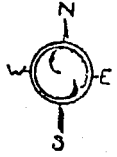
N.W. 24-7-21
ATLAS P 348

348
LOGAN PARK
Vol. 15 Page 10

348-12

W. GARFIELD
3731 3725 3721

AVE.



ST

2168

2164

2162

2160

2156

2152

2150

2148

2144

2142

2140

2138

2136

2134

2132

2130

2128

2126

2124

2122

2120

2118

N. 38TH 2114

2108

2104

2102

348-1062	120	-1061	38	18	120	348-1027
			37			2-1028
		-1059	36			3-1029
		-1058	35			4-1030
		-1057	34			5-1031
		-1056	33			6-1032
		-1055	32			7-1033
		-1054	31			8-1034
		-1053	30			9-1035
		-1052	29			10-1036
		-1051	28			11-1037
		-1050	27			12-1038
		-1049	26			13-1039
		-1048	25			14-1039
		-1047	24			15-1040
		-23				16-1040
		-1046	22			17-1041
		-1045	21			18-1042
		-1044	20			19-1043
120			4580	18		120

2177

2173

2171

2169

2165

2159

2157

2153

2149

2145

2141

2135A

2135

2131

2125

2117

2113

2109

2103

ST

N. 37TH

W. LLOYD

ST.

MICROFILMED

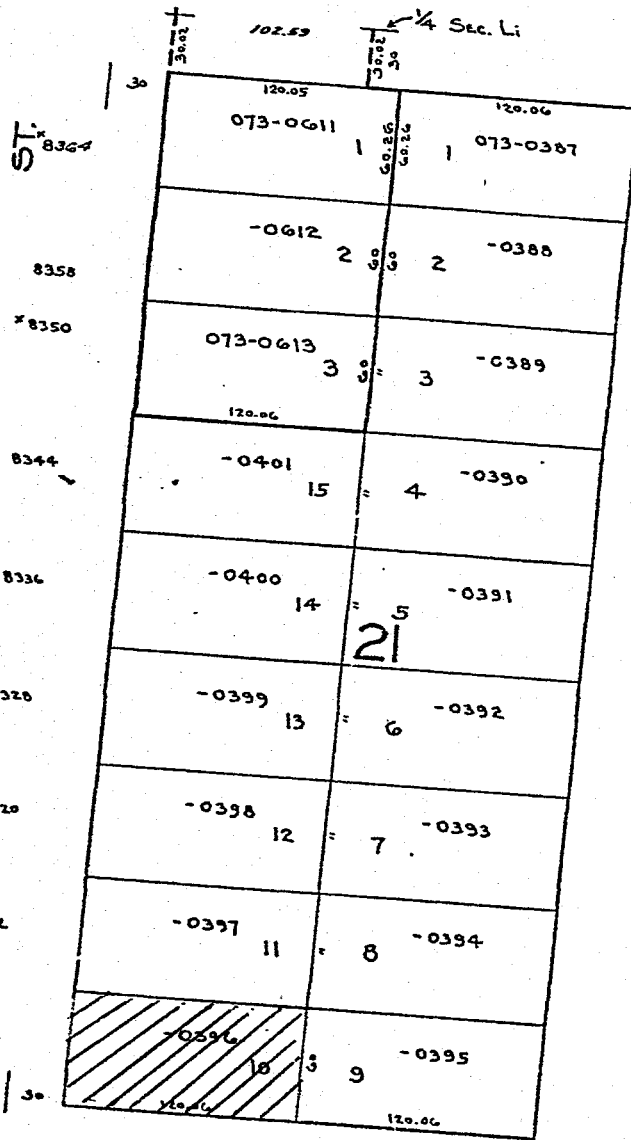
SW 8-8-21
ATLAS P. 73

073

073-32

CERTIFIED SURVEY
MAP NO. 1558

W: DEAN RD.



N. 106TH

N. 105TH

W. VILLA AVE.

PARKSIDE HEIGHTS ADDN. NO. 1

10-6-78

S.W.-3-7-21
ATLAS P. 251

251

251-21

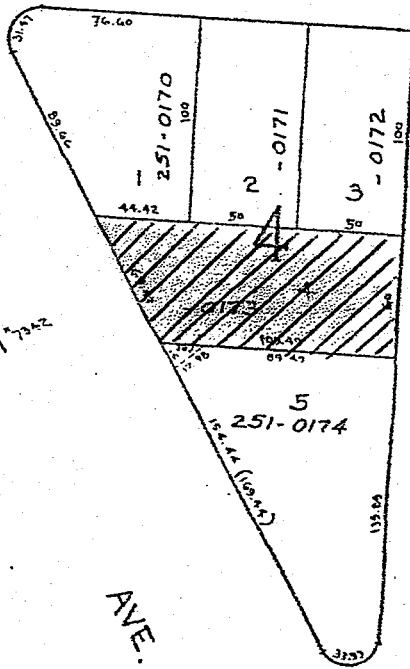
LAKE BLVD GARDENS (ETC.)
VOL. 43 PAGE 39



W. FIEBRANTZ AVE.
*7319 *7309 *7305

W. BECKETT AVE.
*7342

ST.



*4051

N. 73RD ST.

MICROFILMED

S.W. 9-7-22
 ATLAS P. 281
 MANUFACTURING PLAT-STATE

281

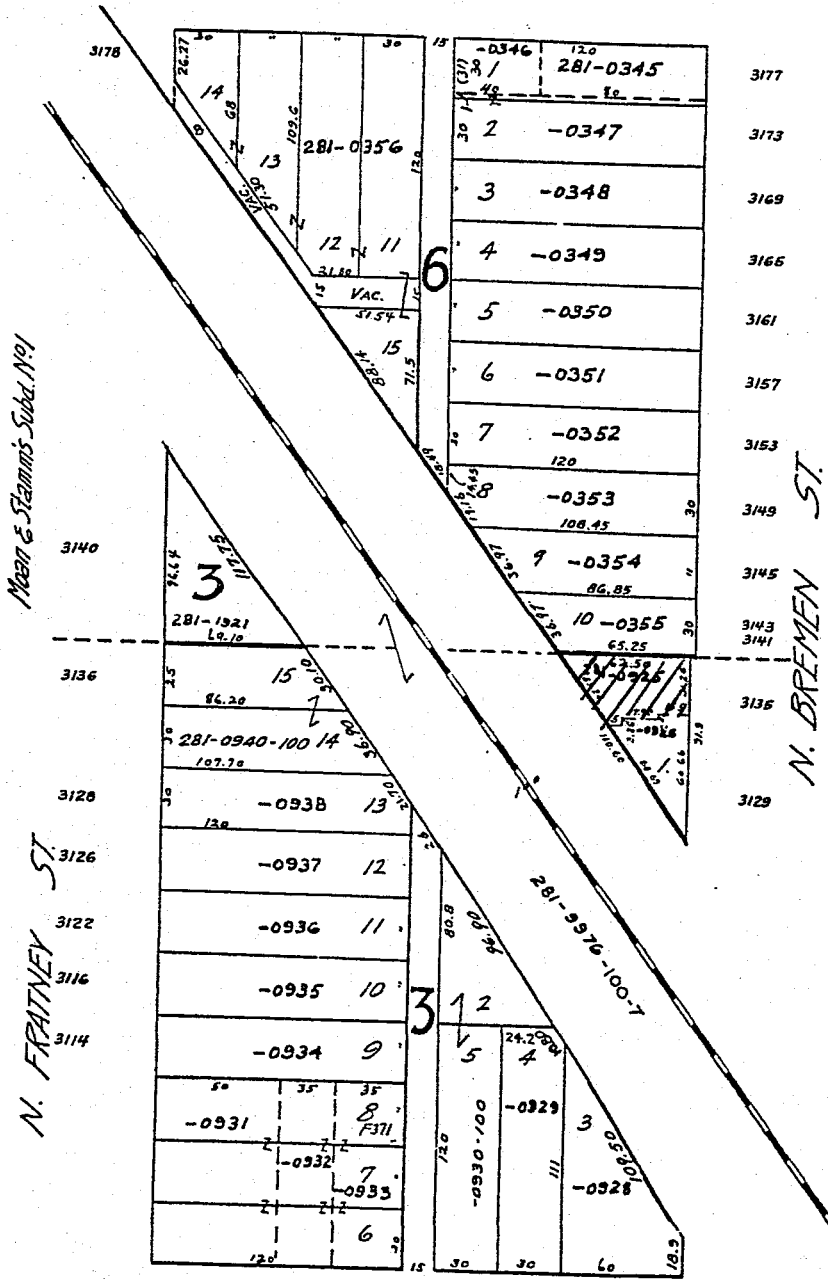
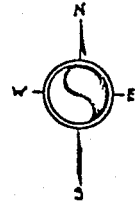
281-12

AUER & RICHTER'S SUBD.

E. AUER

AVE.

821



MICROFILMED BY S. S. S. Co.

800-04 808 812 818 822 828
 E. BURLEIGH ST.
 M. KNEELANDS Part'n etc.

S.W. 9-7-22
ATLAS P. 281

281

5-18-90

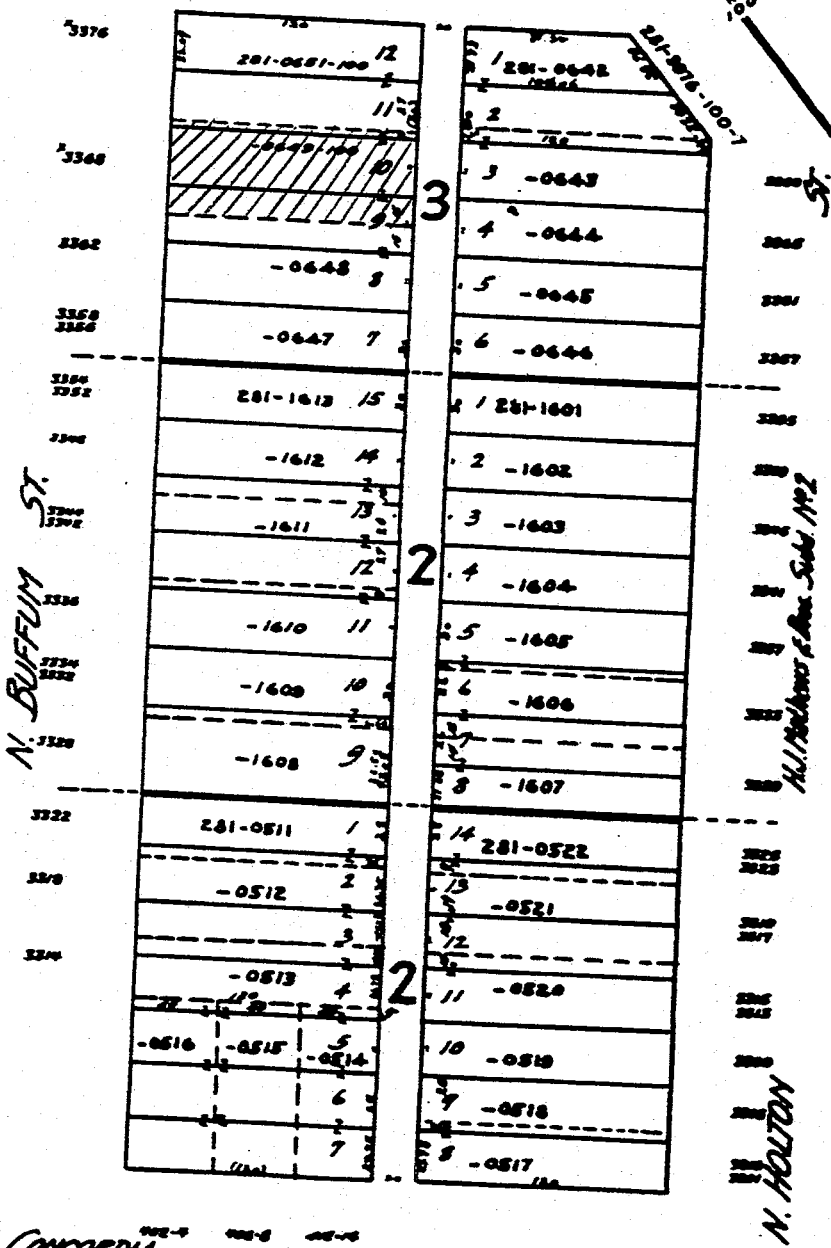
281-26

CREAM CITY HTS.

E. TOWNSEND

478-25

ST.



N. BUFFUM ST.

N. HOLTON ST.

E. CONCORDIA

BANNERS SUBD. NO. 1

AVE.

MICROFILM 5-15-81

S.E. 6-7-22
ATLAS P. 244

244

V. 39 P. 3

ED. PORTH & SONS ADDN NO. 1

W. FIEBRANTZ

AVE.

244-06



4076	723.15 244-0645/17	20	723.15 18 244-0646	4077
4070	-0644 16		19-0647	4071
4064	-0643/5		20-0648	*4067+67A
4060	-0642/4		21-0649	4061
4054	-0641/3		22-0650	4057
4050	-0640/2	2	23-0651	4051 ST
4046	-0639/1		24-0652	4045
4040	-0638 10		25-0653	*4039 N. 14 ST
4034	-0637 9		26-0654	4033
4028	-0636 8		27-0655	4029
4024	244-06357 723.15	20	28 244-0656 723.15	4025

N. 15 ST

N. 14 ST

4515	44	-	-	144	4515
6	5	4	3	2	1
244-0634	-0633	-0632	-0631	-0630	244-0629
127					127

1432 1426 1420 1416 1408 1402
W. CAPITOL DRIVE

MICROFILMED

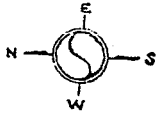
N.W. 11-7-21
ATLAS P. 266

266 GRASSLYN MANOR

266-2

N. 56TH

ST.



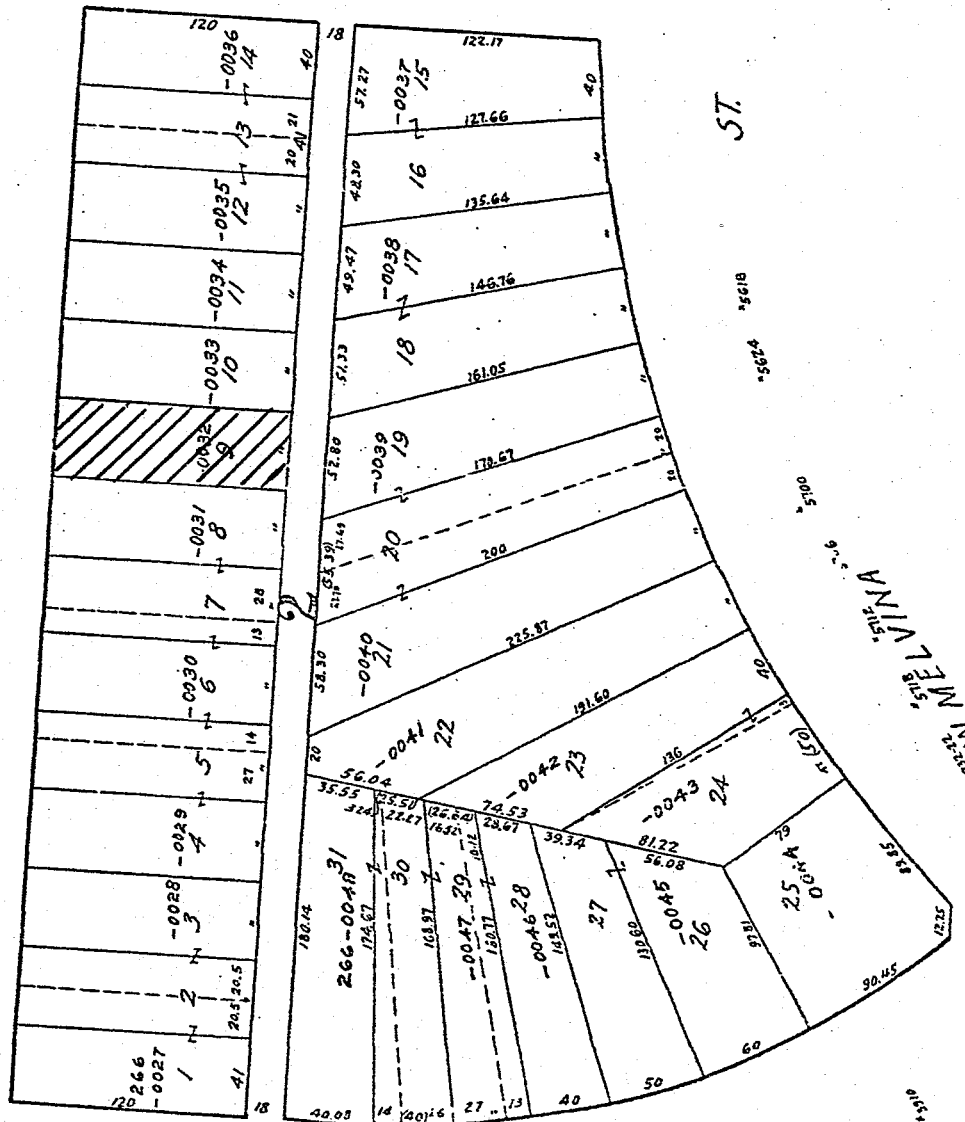
DRIVE
5605

5605 5605-21 5605-25 5607-19 5615

5703

W. CAPITOL
5711 5715

MICROFILMED 10-21-81



ST.

ST.

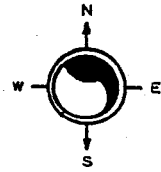
N. 58TH

5956

5950

5940

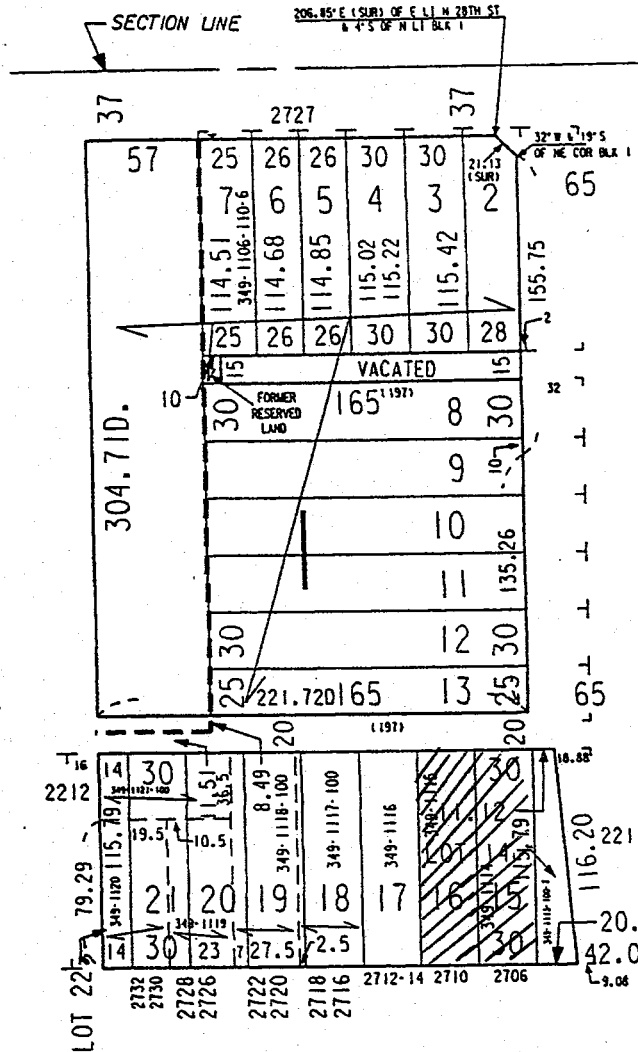
0015



W NORTH AV

LANDS

N 28TH ST



N 27TH ST

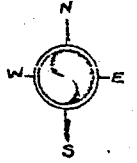
HUMBOLDT HEIGHTS

N.E. 6-7-22
ATLAS P. 232

ADAMS SUBD NO. 2
232

232-11

SCALE 80' = 1" IN CH.

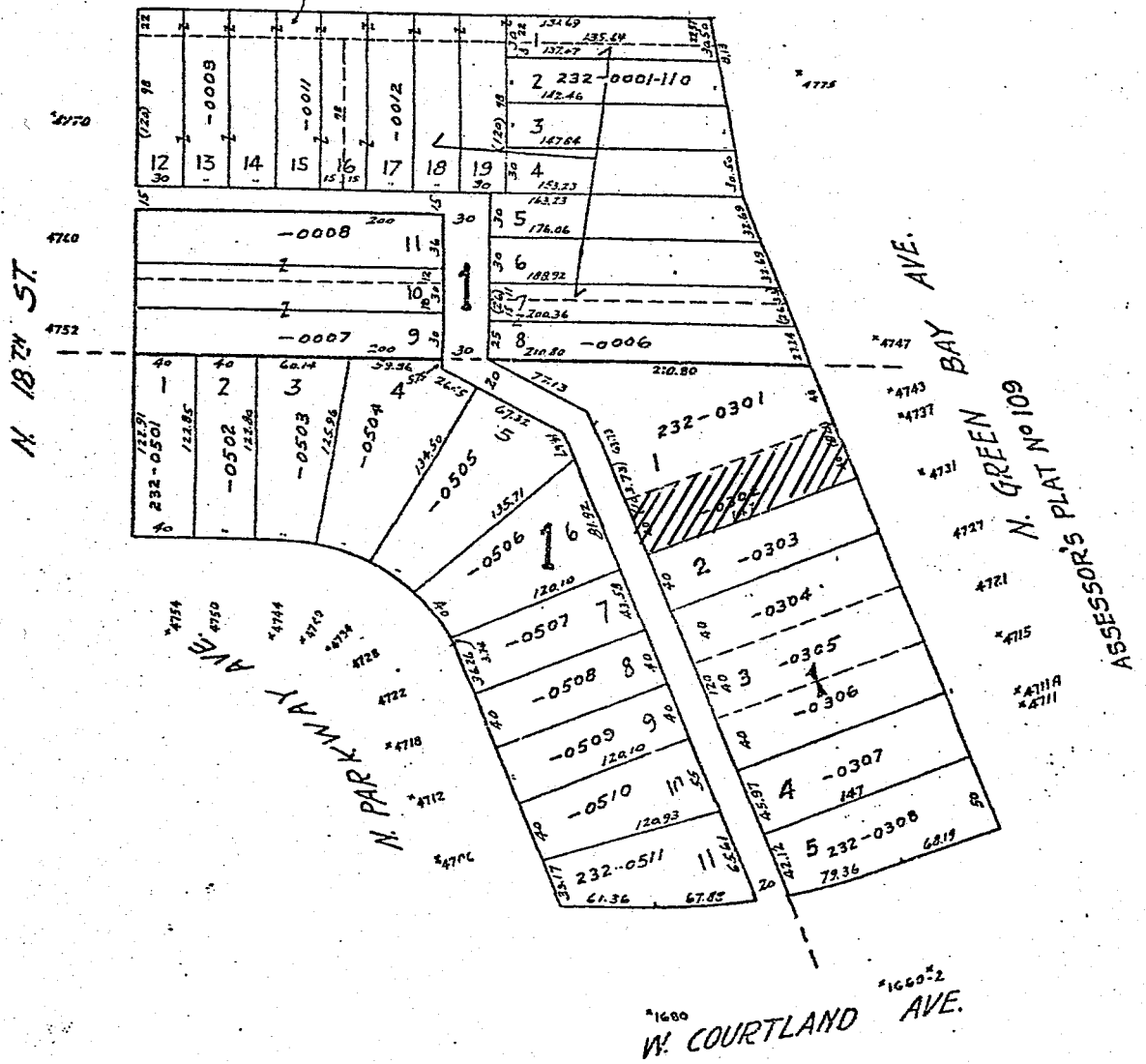


W. HAMPTON AVE.

*7155 *7127

737-0010

St.



MICROFILMED 1-17-69

LINCOLN PARK GATEWAY

**NORTHRIDGE
ESTATES
ADD'N. NO. 2**



8511
8512
8515

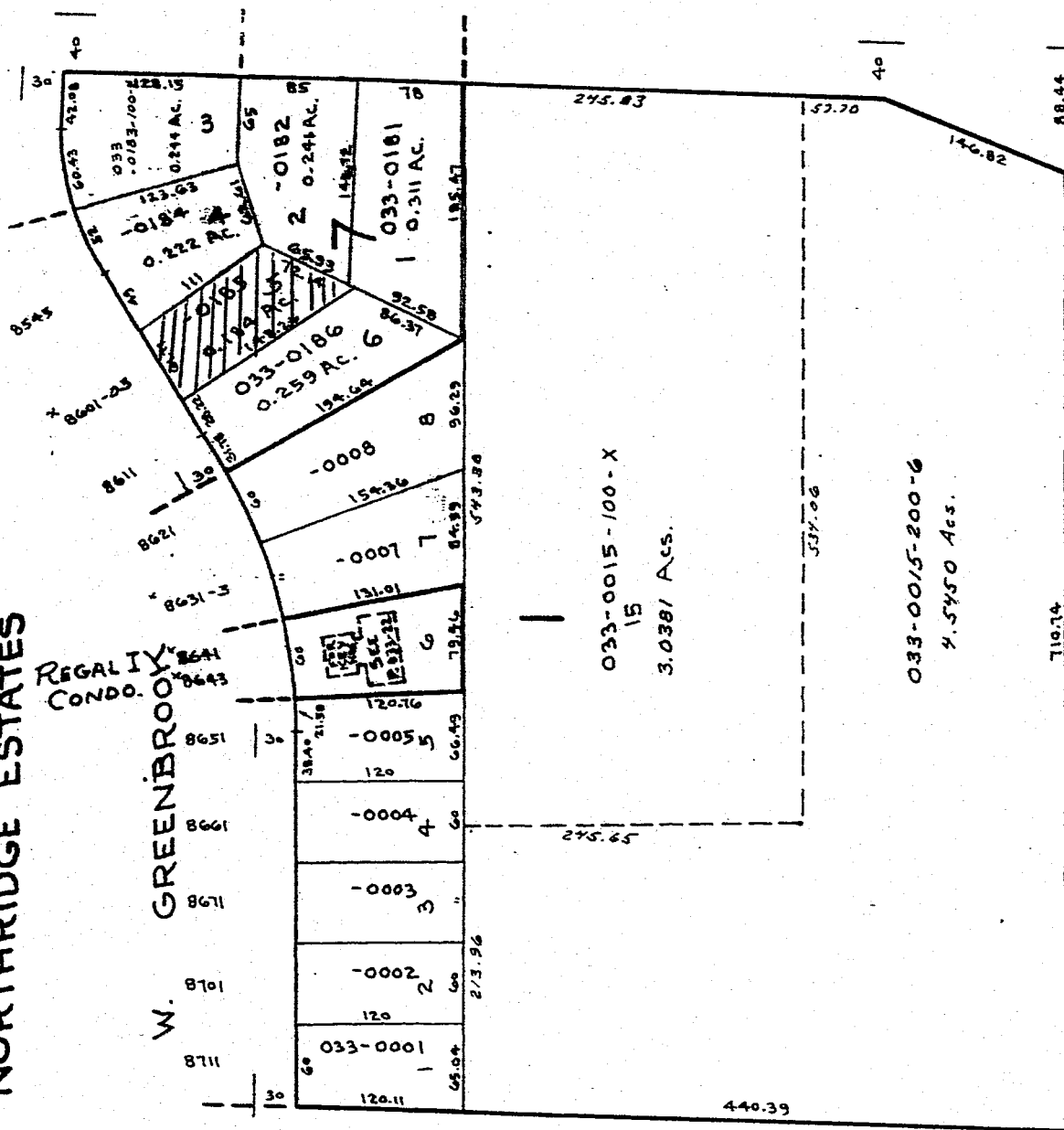
DR.

ST.

NORTHRIDGE ESTATES

REGALTY
CONDO.

W. GREENBROOK



W. BROWN DEER (ST. HWY '100') RD.
8600
8630-64
1/4 SEC. LINE

LANDS ADJ.
SEE P. 033-01

NW-34-B-21
ATLAS P. 188

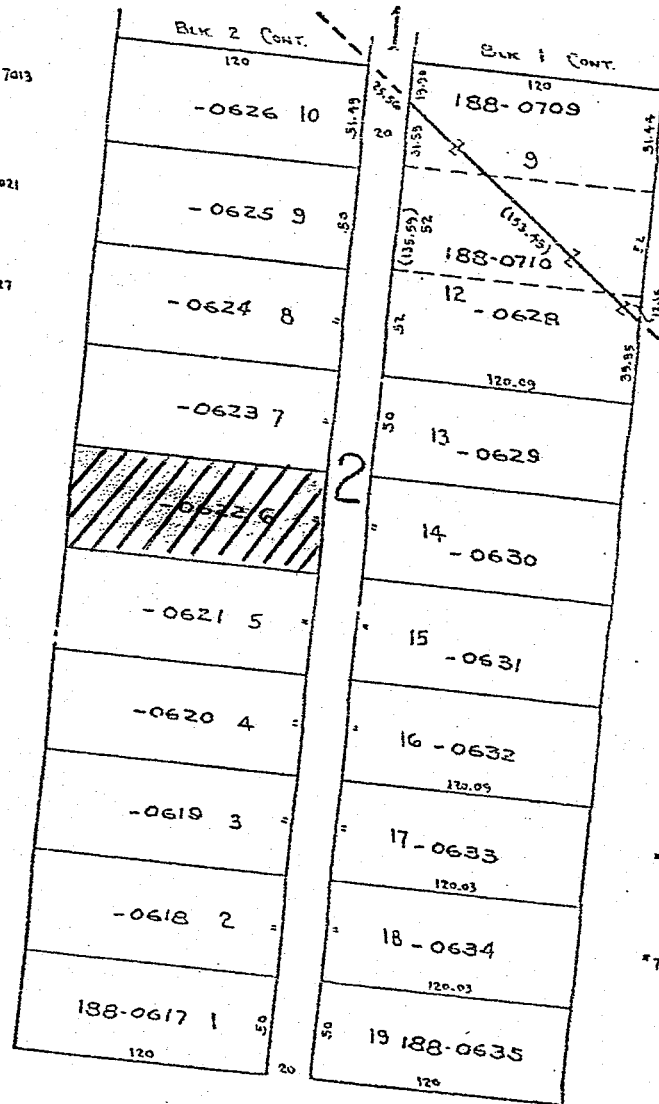
188

188-12



LONG ISLAND PARKSITES NO. 5
VOL. 65 PAGE 34

W. HERBERT



ZENITH PARKSITE
VOL. 62 PAGE 3

W. GRANTOSA DRIVE.

W. TALLMADGE PL.

PL.

NW 29-7-22

ATLAS P. 391

390-391

391-31

SCALE 1" = 80'

NE 30-7-22

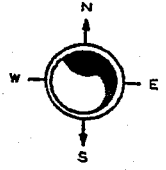
ATLAS P. 390

GEORGE SMITH'S
SUBDIVISION

RECORDED 12-23-1867

SURVEY & SUBDIVISION
INTO CITY LOTS OF
THE NORTH 30 ACRES

RECORDED 12-07-1853

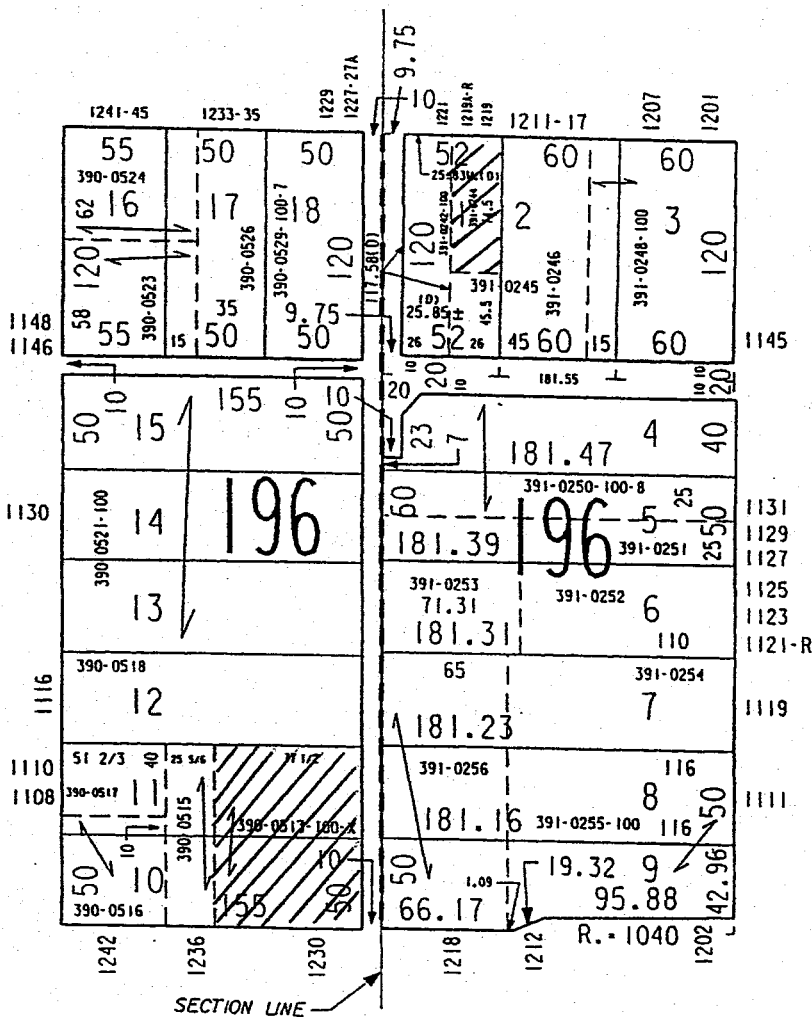


W JUNEAU AV

PREFIX 390 PREFIX 391

N 13TH ST

N 12TH ST

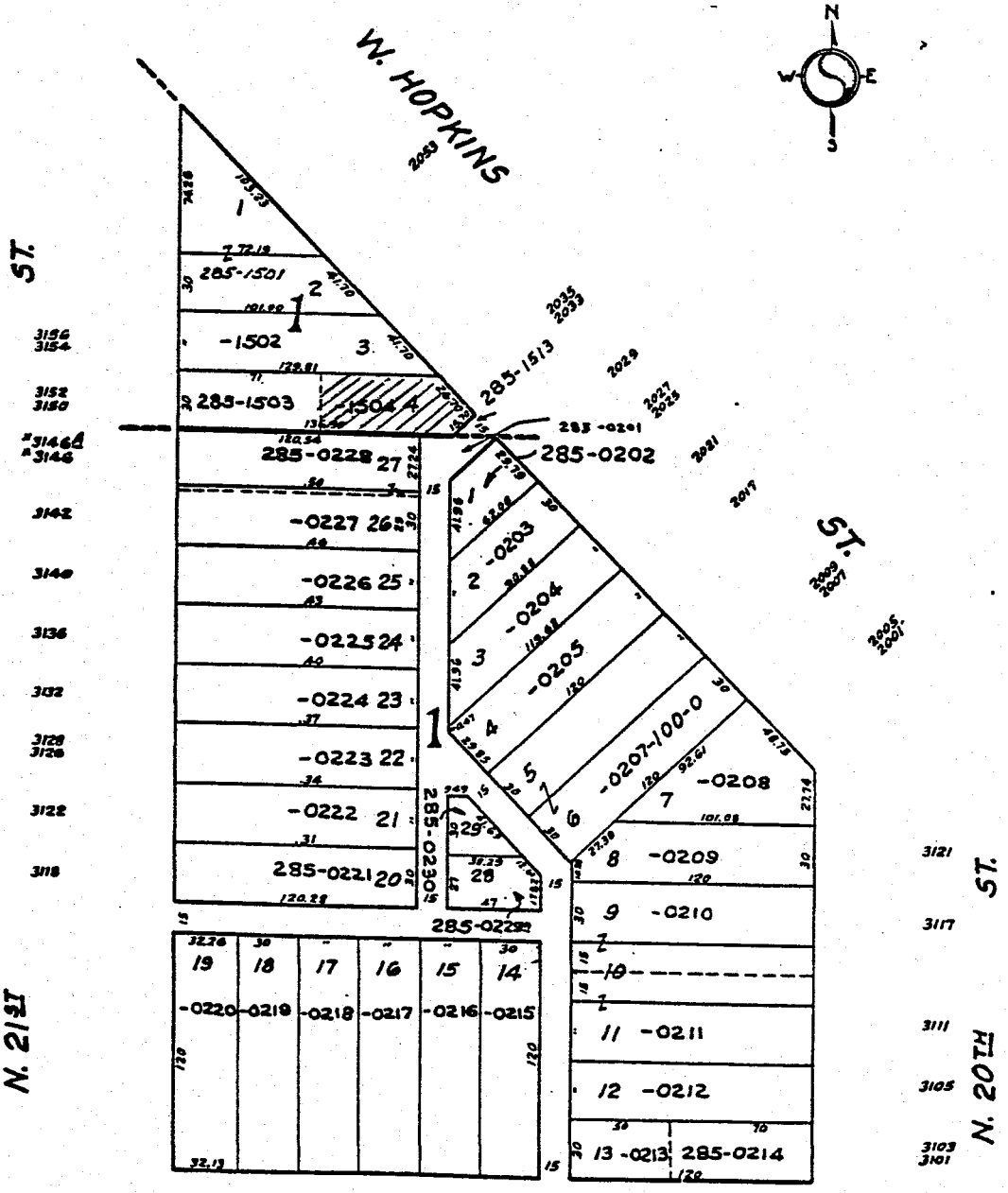


W HIGHLAND AV

S.W. 7-7-22
 ATLAS P. 285
 Milw. Homestead & Inv. Assn. Subd. No 1

285

285-06



MICROFILMED 1-24-80

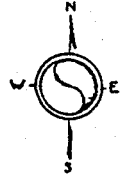
2038 2040 2034 2030 2026 2022 2016 2013 2012
 W. BURLEIGH ST.
 BECKER'S SUBD. No 2

S.E. 8-7-22
ATLAS P. 282

282

V. Schuette's Subd.

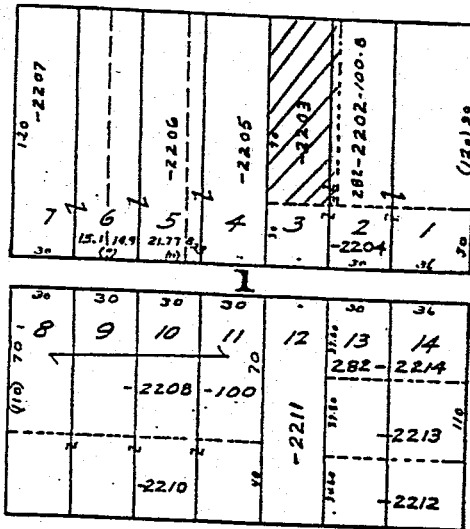
282-31



W. KEEFE AVE.
419 415 411 407
423

N 5TH ST.

N 4TH ST.



W. RANDOLPH ST.
410

3-22-85

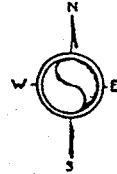
18

S.E. 8-7-22
ATLAS P. 282

282

V. Schuette's Subd.

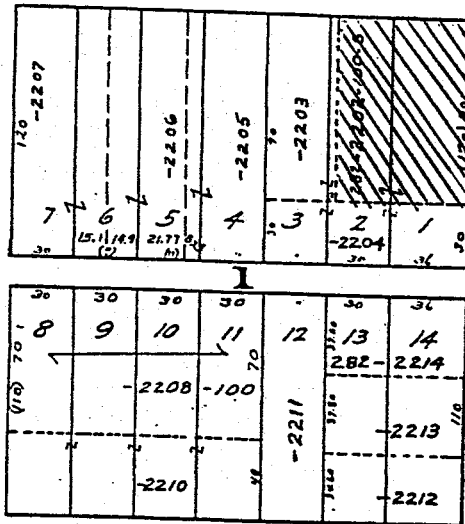
282-31



W. KEEFE AVE.
419 415 411 407
443

N 5TH ST.

N 4TH ST.



3470
3460
3450
3448

3463
3459
3457
3453
3451
3449
3447

W. RANDOLPH ST.
410

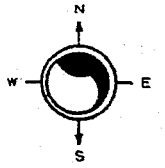
3-22-85

NW 07-0-22
ATLAS P. 270

270 & 285

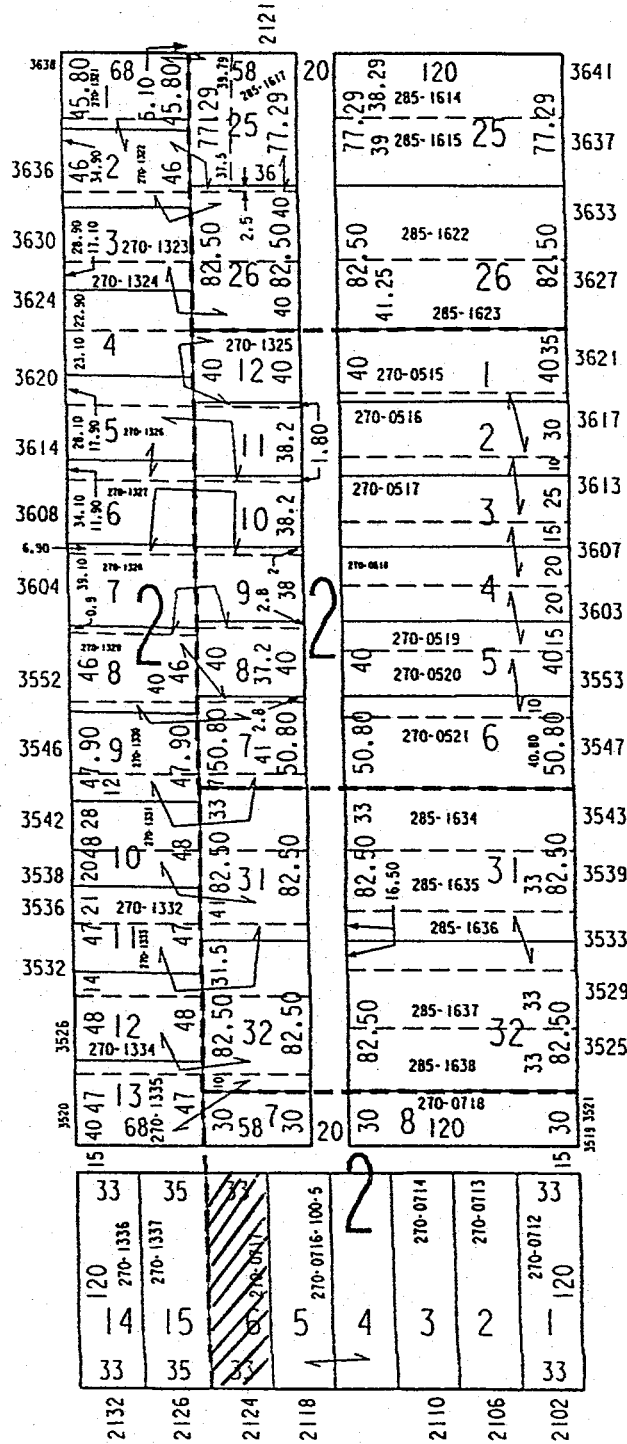
270-0
SCALE 1" = 80'

W NASH ST



SIEHR'S SUBDIVISION

N 22ND ST



PEASE'S
SUBDIVISION

J. P. KOELSCH'S SUBDIVISION

N 21ST ST

PEASE'S
SUBDIVISION

MUELLER'S
SUBDIVISION

W KEEFE AV

5-18-91

S.W. 7-7-21
ATLAS P. 286

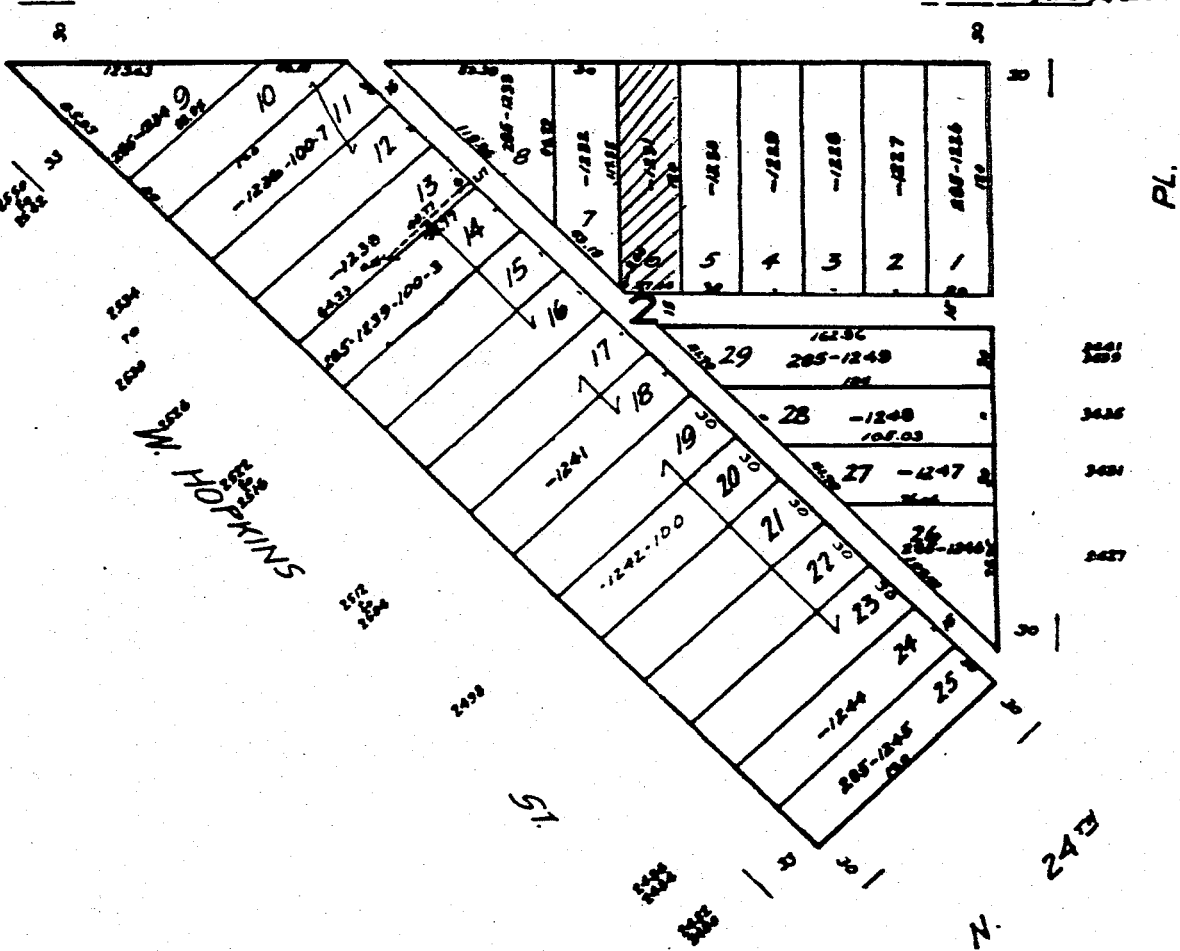
285

285-30

C.T. KENNAN'S SUBD.



2589-07 W. KEEFE 2478 2477 2476 2475 2474 2473 2472 2471 2470 2469 2468 2467 2466 2465 2464 2463 2462 2461



5-15-70

5

S.E. 19-7-22

ATLAS P. 303

363

363-05

KNEELAND'S ADDN



W. MCKINLEY

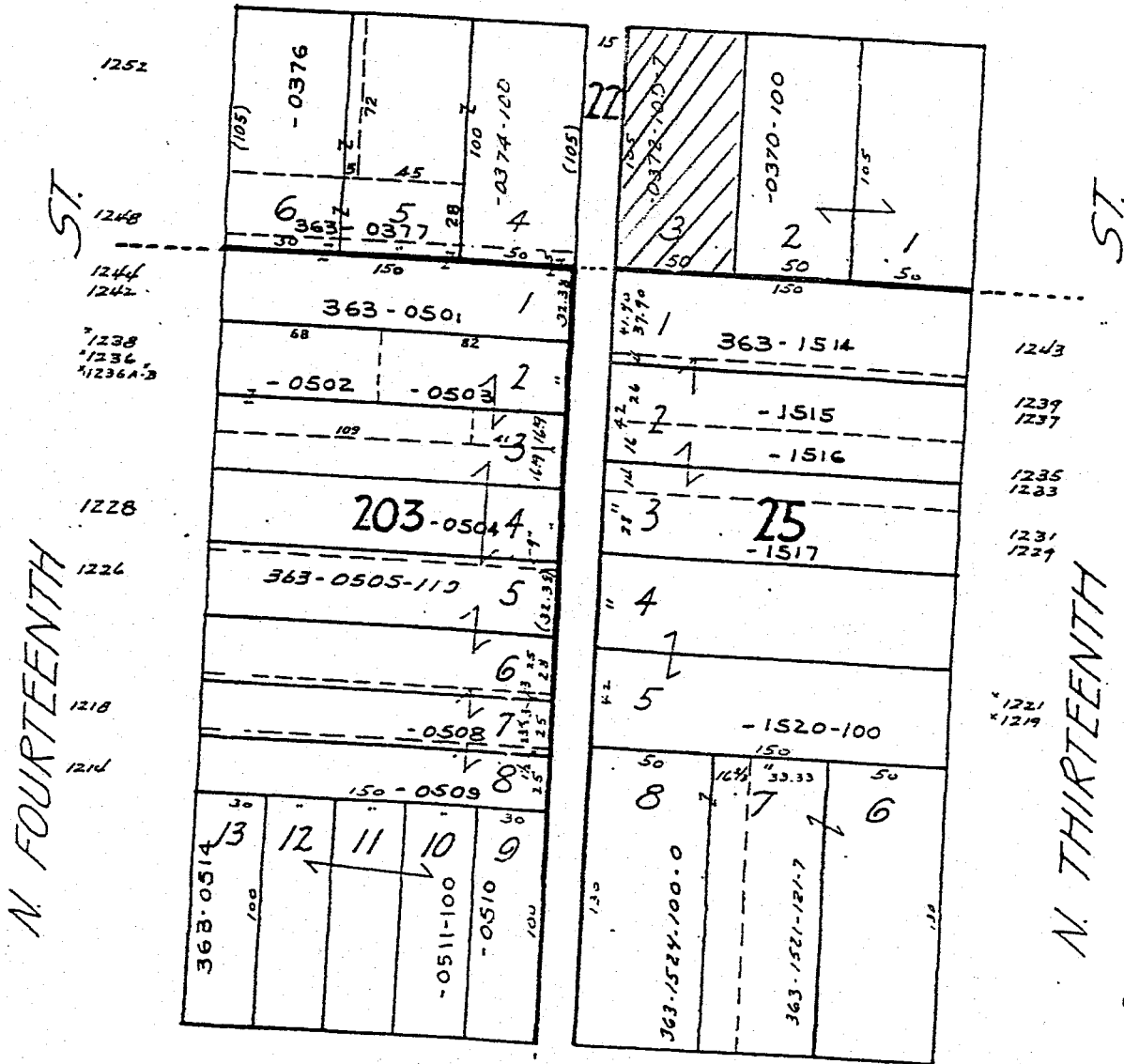
*1339A+B
*1339

1323

AVE.

1315

*1307



W. JUNEAU
(OTTO'S) SUBD. OF W. 1.933 ACRES ETC.

SUBD. of Part of LOT 6. in Partition Etc.

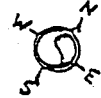
S.W. 18-7-22
ATLAS P. 325

325

325-25

Re-Subd. Lots 1 to 2 etc Dahlgren & Kilians

BLK 1 CONT. SEE P. 325-24



W. FOND DU LAC

Dahlgren & Kilians Subd.

2648

2646

2642

2636

Ave. 2634

2630

2626

2622

2618

2612

W. Medford

2610

2608

2602

2600

		150	
	9	1	
	10	325-1006-100	
	11		
	12		
	13		
	8	736	
	14		
	15		
	16	-1008	
	17	-1009	
	18	-1010	
	19	-1011	
	20		
	21	-1013-100	
	22	-1014	
	23	-1015	
	24	325-1016	
	25	100	
325-1027	37		
-1026	36		
-1025	35		
-1024	34		
-1023	33		
-1022	32		
-1021	31		
-1020	29		
-1019	28		
-1018	27		
	26		
325-1017	15		

2512

2530

2522

2521

2526

2517

2515

2513

2509

Ave. 2505

2501

Ave.

MICROFILMED 11-19-83

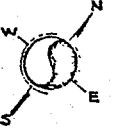
W. TAMARACK

St.

N.E. 11-7-21
ATLAS P. 267

W. HOYT

PL.



*4834
 AVE
 *4828-8A
 *4824
 *4818
 *4812
 4806-8
 *4802
 4744-6
 4738-40
 *4734
 *4728
 *4724
 W. MEDFORD
 *4718
 *4714
 *4708
 *4700-2

120	10	120
267-0646 32	40	1 267-0615
-0645 31		2 -0616
-0644 30		3 -0617
-0643 29		4 -0618
-0642 28		5 -0619
-0641 27		6 -0620
-0640 26	2	7 -0621
-0639 25		8 -0622
-0638 24		9 -0623
-0637 23		10 -0624
-0636 22		11 -0625
-0635 21		12 -0626
-0634 20		13 -0627
-0633 19		14 -0628
-0632 18		15 -0629
-0631 17	40	16 -0630
120	10	120

*4735
 AVE.
 *4729
 *4725
 *4719
 *4713
 *4709
 *4703
 *4645
 *4639-41
 *4633-5
 *4629
 *4623
 4619-9
 *4613-3
 *4609
 *4601
 W. FOND DU LAC

RAINBOW RIDGE
Vol. 36 Page 58

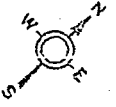
UNRECORDED

S.W.-34-8-21
ATLAS P. 212

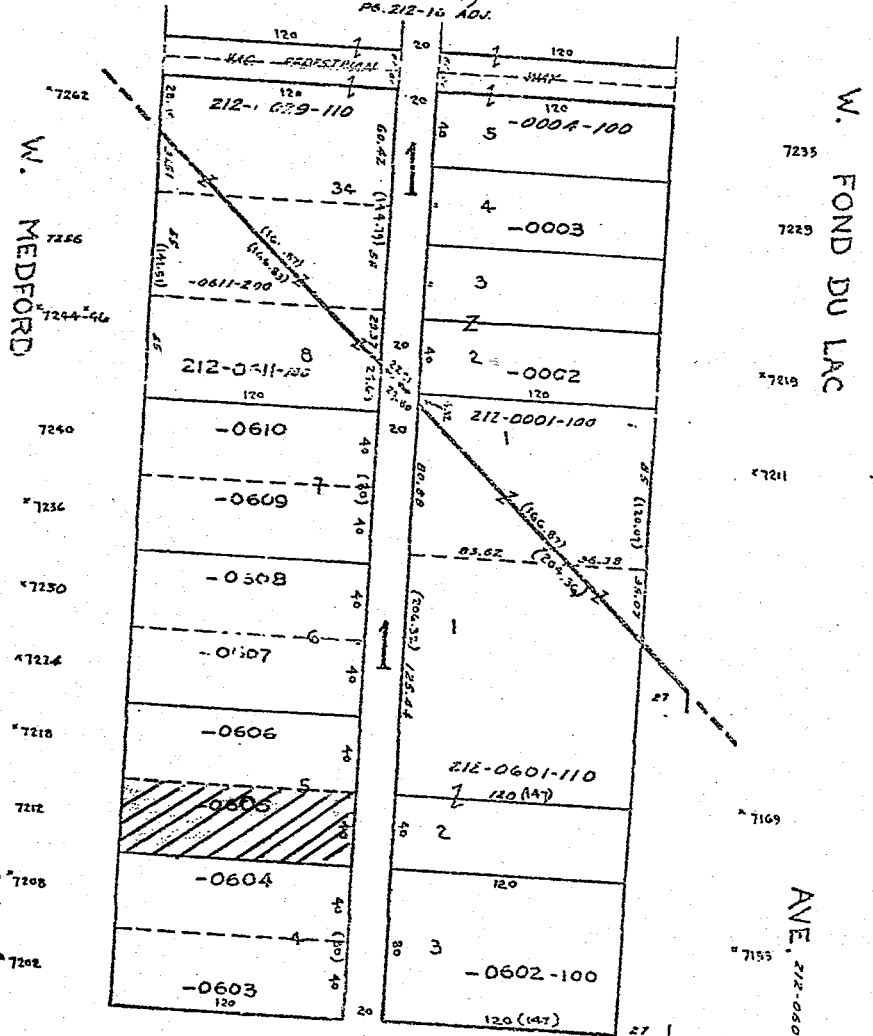
212

212-11

FONDTOSA
Vol. 45 P. 33



(Blk 1 Cont'd)
Pg. 212-16 ADV.



WELLINGTON PARK
Vol. 40 PAGE 11

MICROFILMED 11-12-81

W. WELLINGTON PL.

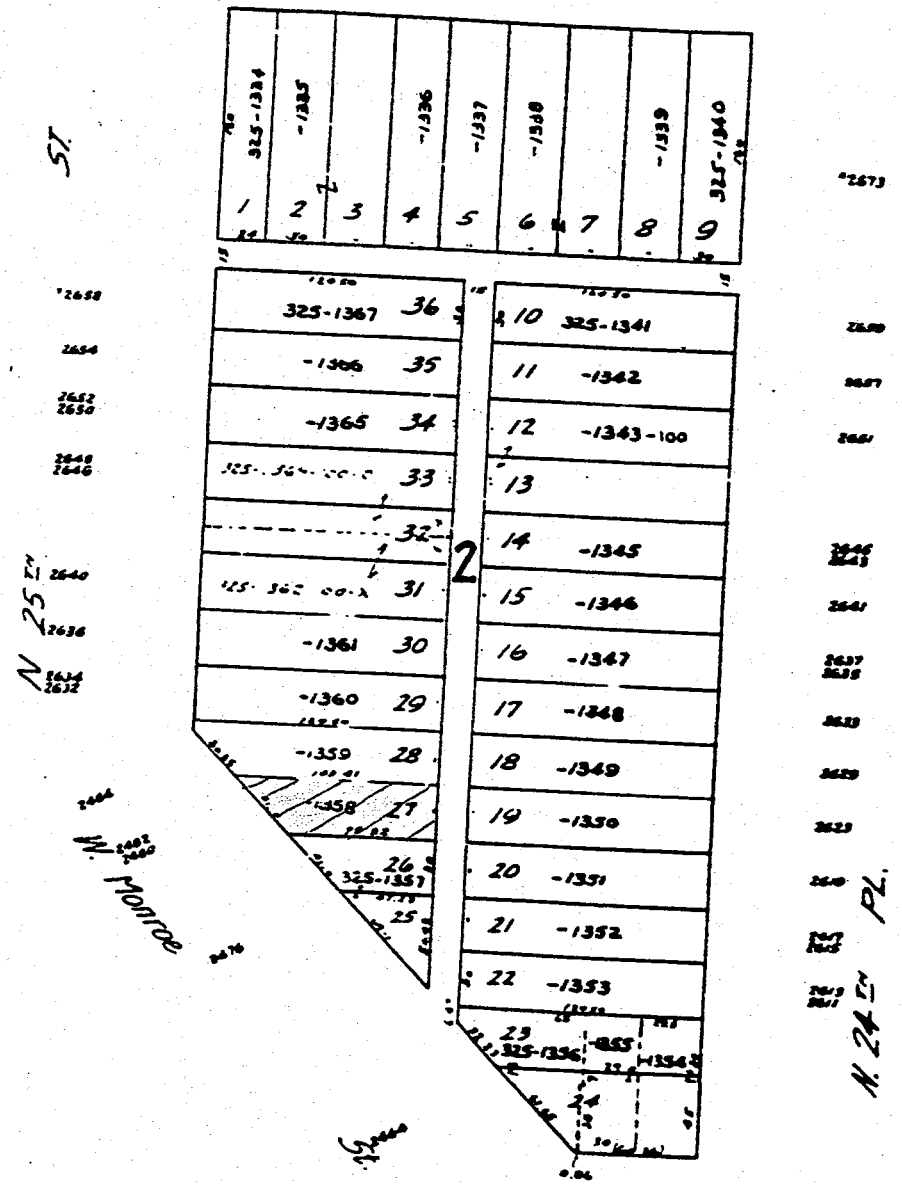
ANE. 212-0501-210 STR.

S.W. 18-7-22
ATLAS P 315

Vol 4 Page 14 **325**
Subd of Lots 9 & 10 WILLIAMS SUBD.

5-18-90
325-21

W. CENTER
2485 2490 2477 2471 2468 2461 2457 2453
2479 2475 2466 2461 2458 2451
ST.



W. Clarke Sr

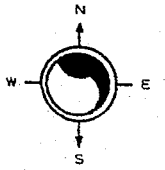
NE 06-7-22

232

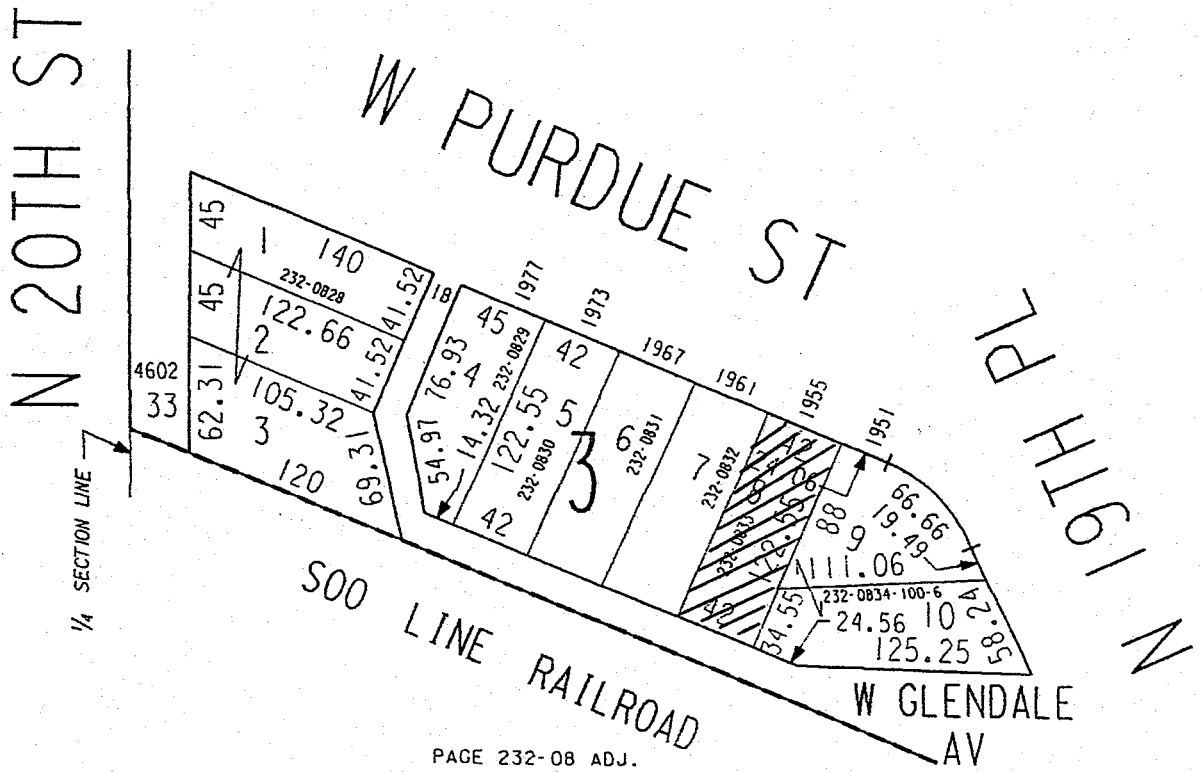
232-1

ATLAS P. 232
MANUFACTURING PLAT-STATE

SCALE 1" = 80'



LINCOLN PARK GATEWAY NO. 3



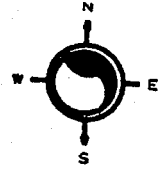
PAGE 232-08 ADJ.

NE 17-7-22
ATLAS P. 313

313

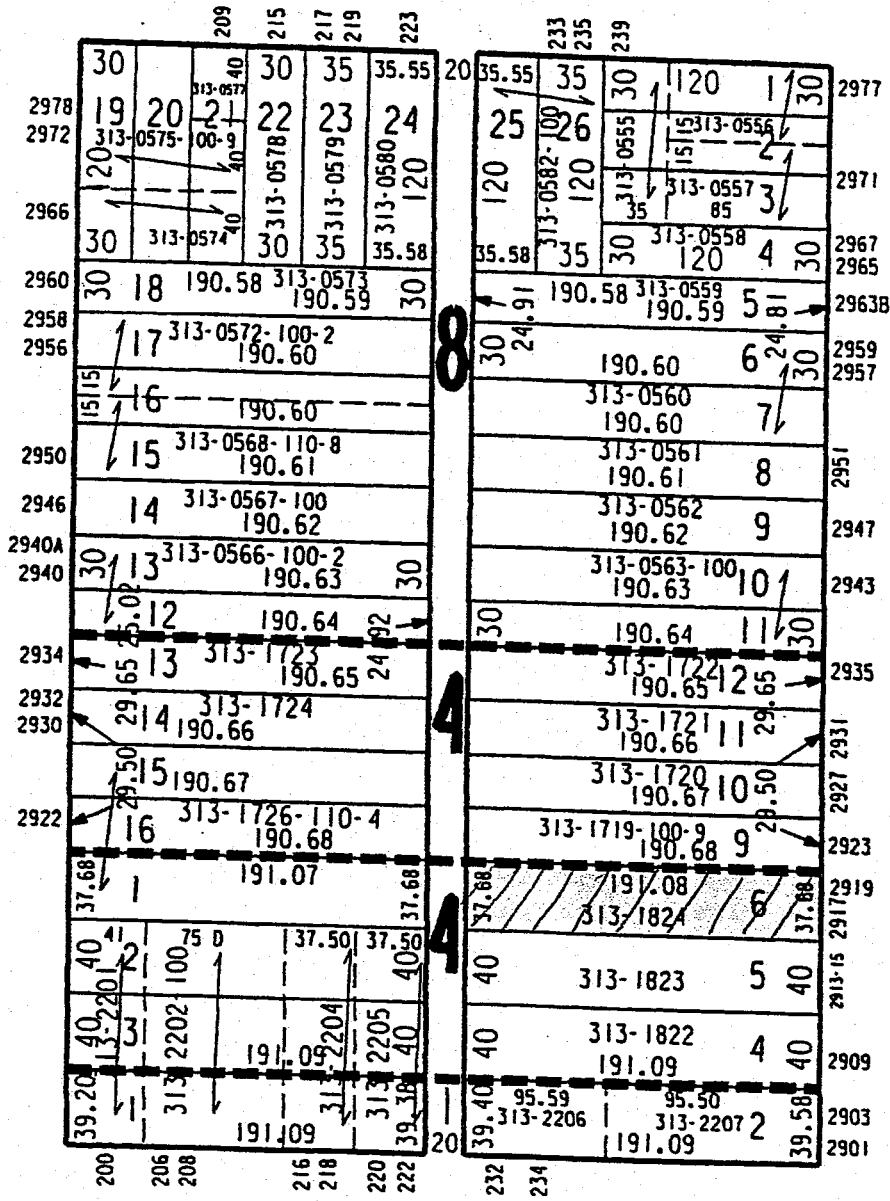
313-02
SCALE 1" = 80'

D. T. BROWN'S SUBDIVISION OF LOT 'F' E CHAMBERS ST



N PALMER ST

N RICHARDS ST



SUBDIVISION OF SOUTH 1/2 OF NORTH 1/2 OF LOT 'E' OF LOT 'F'

E LOCUST ST WECHSELBERG & ELLIOT'S SUBDIVISION

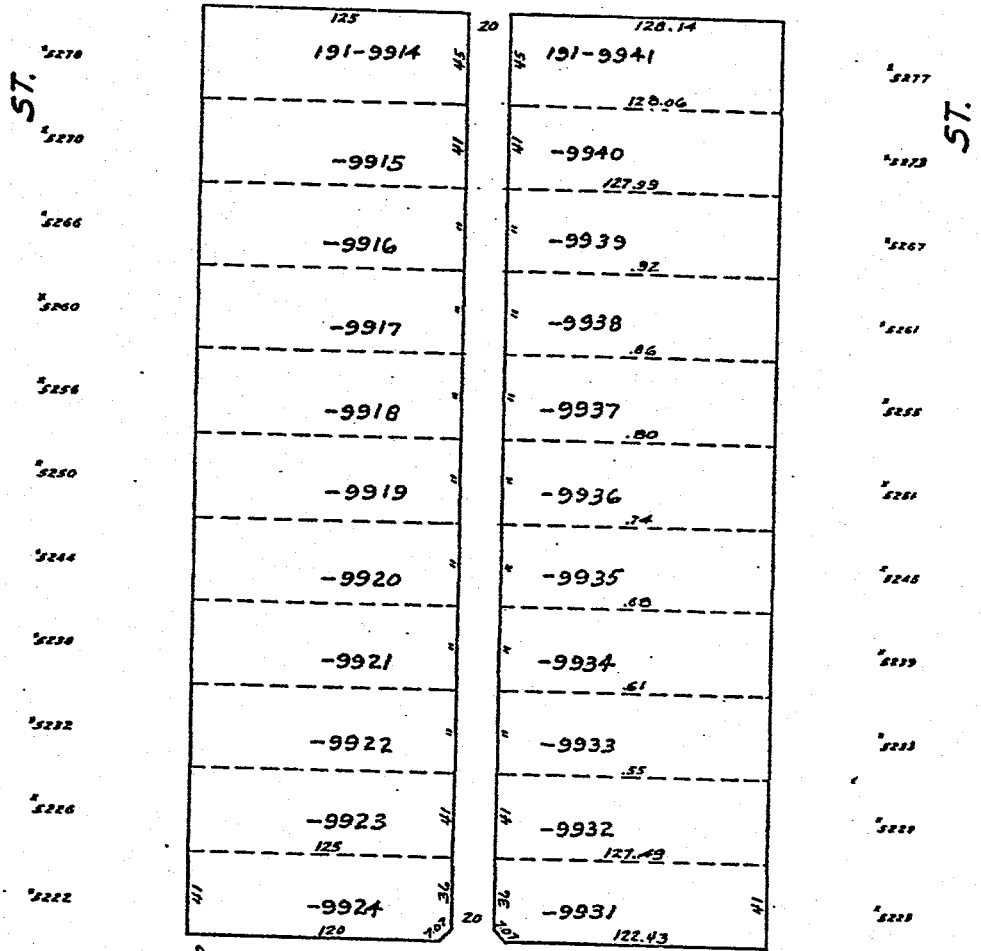
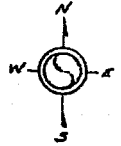
NE 35-8-21
ATL. P. 191

191 LANDS

191-11

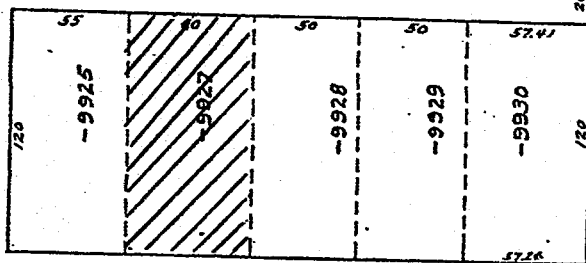
W. ROHR

AVE.



N. 48TH

N. 47TH



W. VILLARD

AVE.

MICROFILMED 1-2-79

S.E. 17-7-22
ATLAS P. 322

322

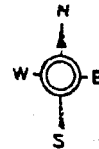
JOHN B A KERN'S SUBD

322-15

W. Clarke

St.

115



2576	322-003040	15'	30	130	322-0001-100	2577
	39	15'	30		2	
2570	-0029 38	15'	30		3	2567-71
St. 2564	-0028 37	15'	30		4	75
	36	15'	30		5	
2560-58	-0027	15'	30		6 -0005	
	35	15'	30		7	2557-9
2552-4	-0026 34	15'	30		-0006	
	33	15'	30		8	2551-3
	-0025	15'	30		-0007	
2544-16	32	15'	30		9	2545-7
	-0024 31	15'	30		10 -0008	
2540	30	15'	30		11 -0009-100	2541-3
	-0023	15'	30		12	2537
2534	29	15'	30		13	
	28	15'	30		14 -0011-100	2525
2526	27	15'	30		15	75 / N
	26	15'	30		1 -0012	2519
2518-20	-0020	15'	30		16	2513-15
	25	15'	30		17 -0013	
2512	-0019 24	15'	30		18 -0014	2507-9
	23	15'	30		19	
2504	22	15'	30		2 -0015	2505
	21	15'	30		20 -0016	

N. 2ND

W. Wright 124

118-6

St.

MICROFILMED