

354

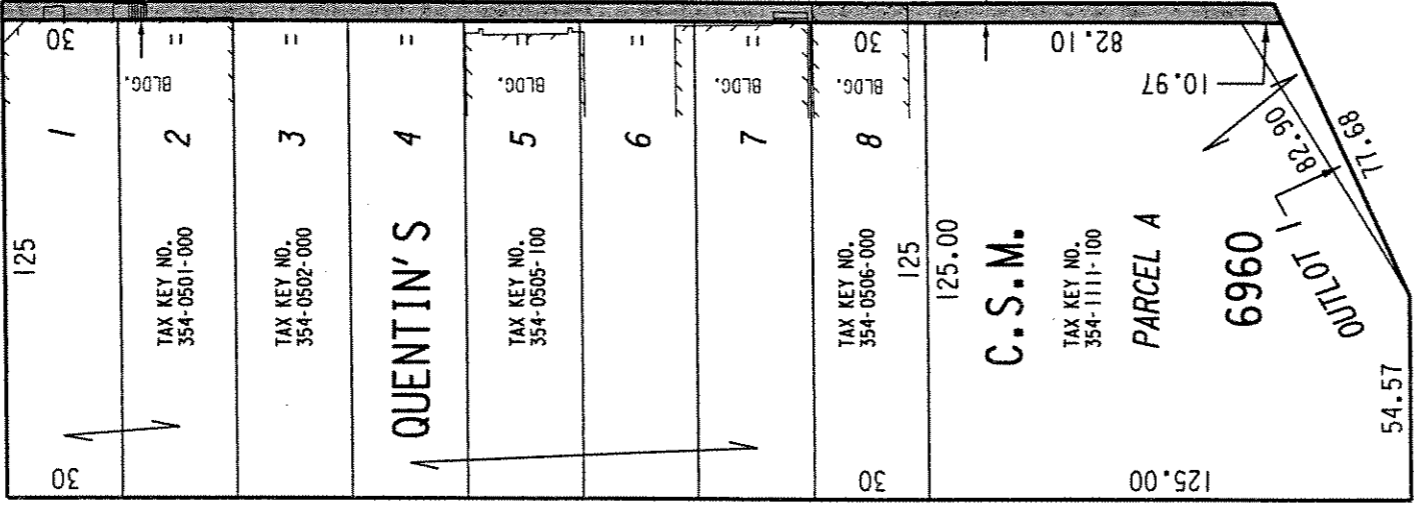
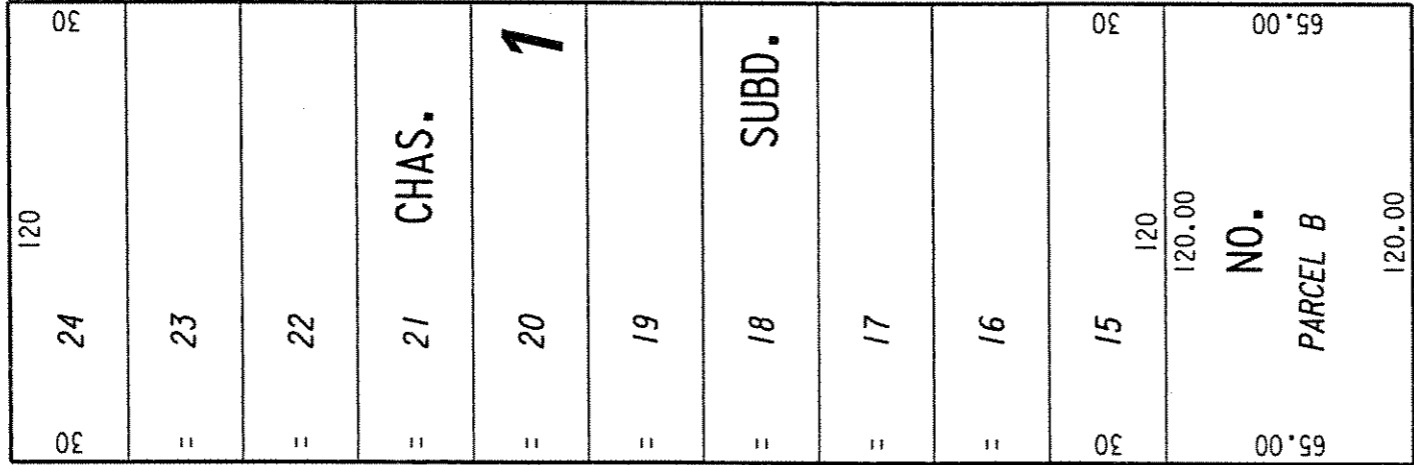
N.W. 1/4 SEC. 21, T.7N., R.22E.

E. North Ave.

(70' R.O.W.)
SECTION LINE

35

35



St.

(70' R.O.W.)

(100' R.O.W.)

N. Humboldt Ave.

Ave.

(R.O.W. VARIES)

E. Garfield

PORTION OF PUBLIC STREET PROPOSED TO BE VACATED

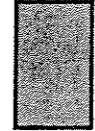


EXHIBIT "A"
FILE NO. 001537

INFRASTRUCTURE SERVICES DIVISION

MILWAUKEE, WISCONSIN

ASSIGNED TO: P.A. VELLA
DRAWN BY: P.A.V.
PROJECT/GRANT NO.: WK52337208
APPROVED BY:

CH'K'D. BY: W.E. FUCHS

DATE: AUG. 12, 2005

SCALE: 1" = 50'

Maria Lindholm
CENTRAL DRAFTING & RECORDS MANAGER

W. E. Fuchs
CITY ENGINEER