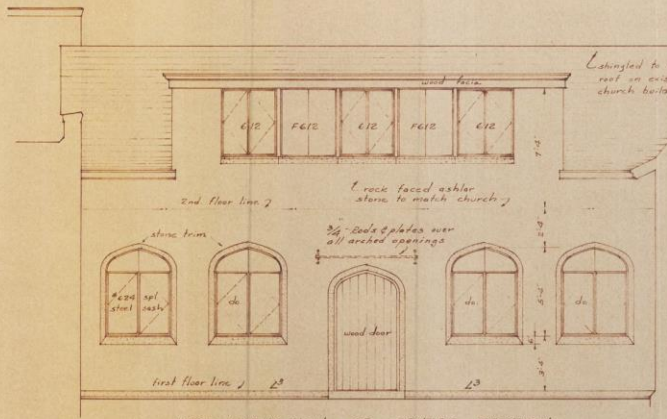


Local Historic Preservation District: North Downer Avenue Commercial District

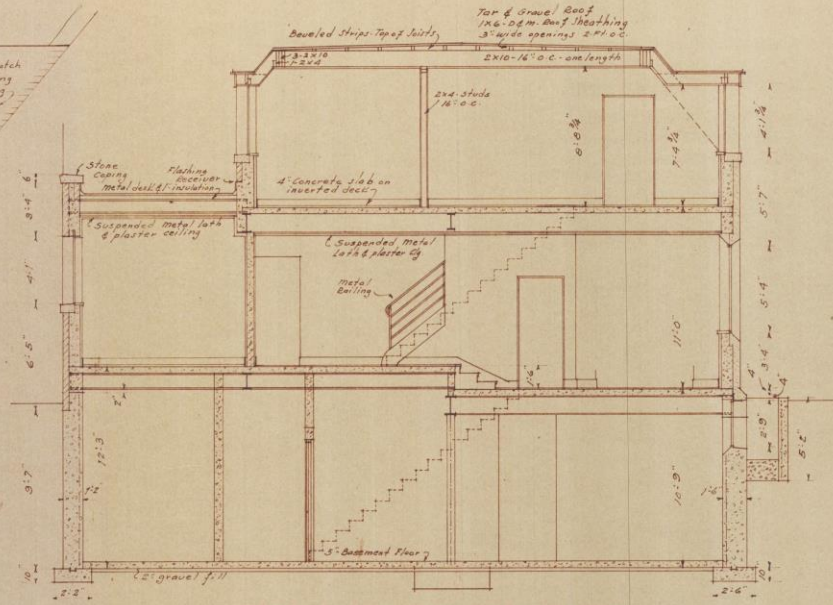
-  Historic District Boundary
-  Historic Site



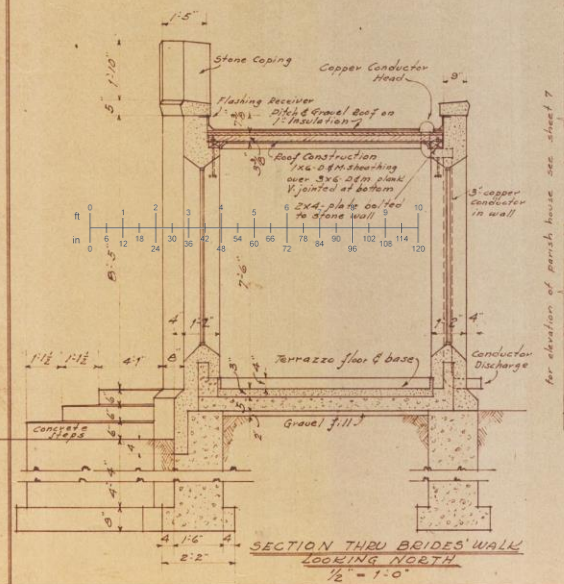
St. Mark's Episcopal Church (1911) located at 2604 N. Hackett Avenue, is pivotal to the character of the district and an excellent example of the design work of an important Milwaukee Architect, Fitzhugh Scott, Sr. St. Mark's is Milwaukee's only example of a small English-style parish church with an attached cloister. The church was meticulously constructed with hand-finished, rusticated limestone and further embellished with English Perpendicular style art glass windows. The church complex and the commercial buildings fanning out on either side of it are also reminiscent of the plan of a small English or European village. The cloister, added in 1949, is a rare architectural feature in this country and it reflects a continuation of distinctly European building traditions.



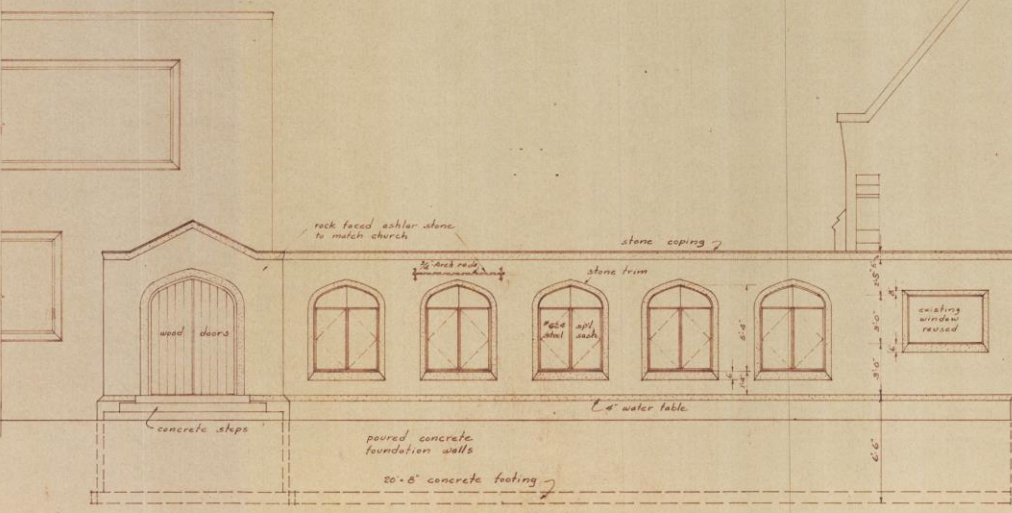
WEST ELEVATION OF CENTER SECTION
1/8" = 1'-0"



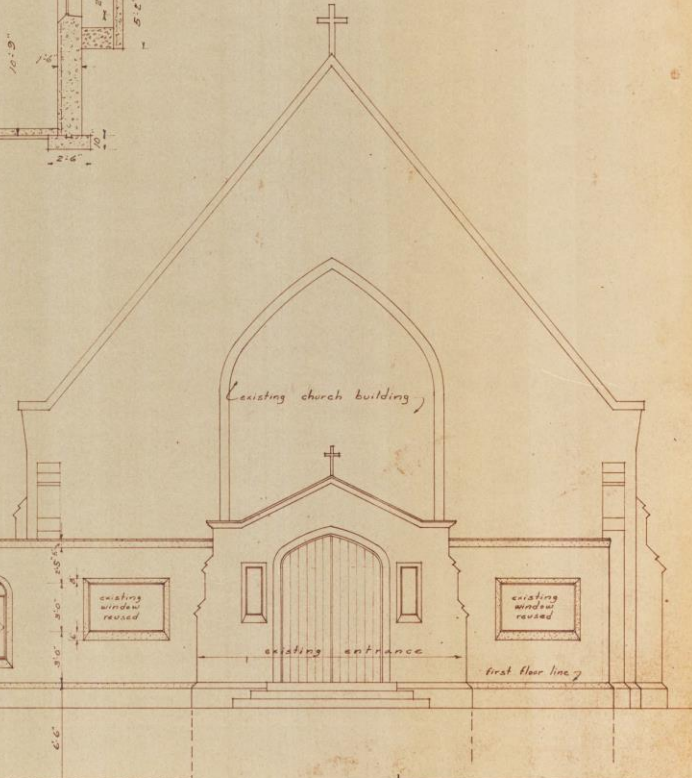
CROSS SECTION THRU CENTER SECTION
LOOKING SOUTH
1/4" = 1'-0"



SECTION THRU BRIDES' WALK
LOOKING NORTH
1/2" = 1'-0"



ELEVATION OF BRIDES' WALK
1/8" = 1'-0"



Sheet No.	6
PARISH HOUSE & GUILD HALL ST MARKS EPISCOPAL CHURCH 2418 North Hackett Avenue Milwaukee, Wisconsin	
Arthur L. & Arthur W. Sedenschwartz Architects - 2102 N. 4th St., New York	
May 14, 1949	

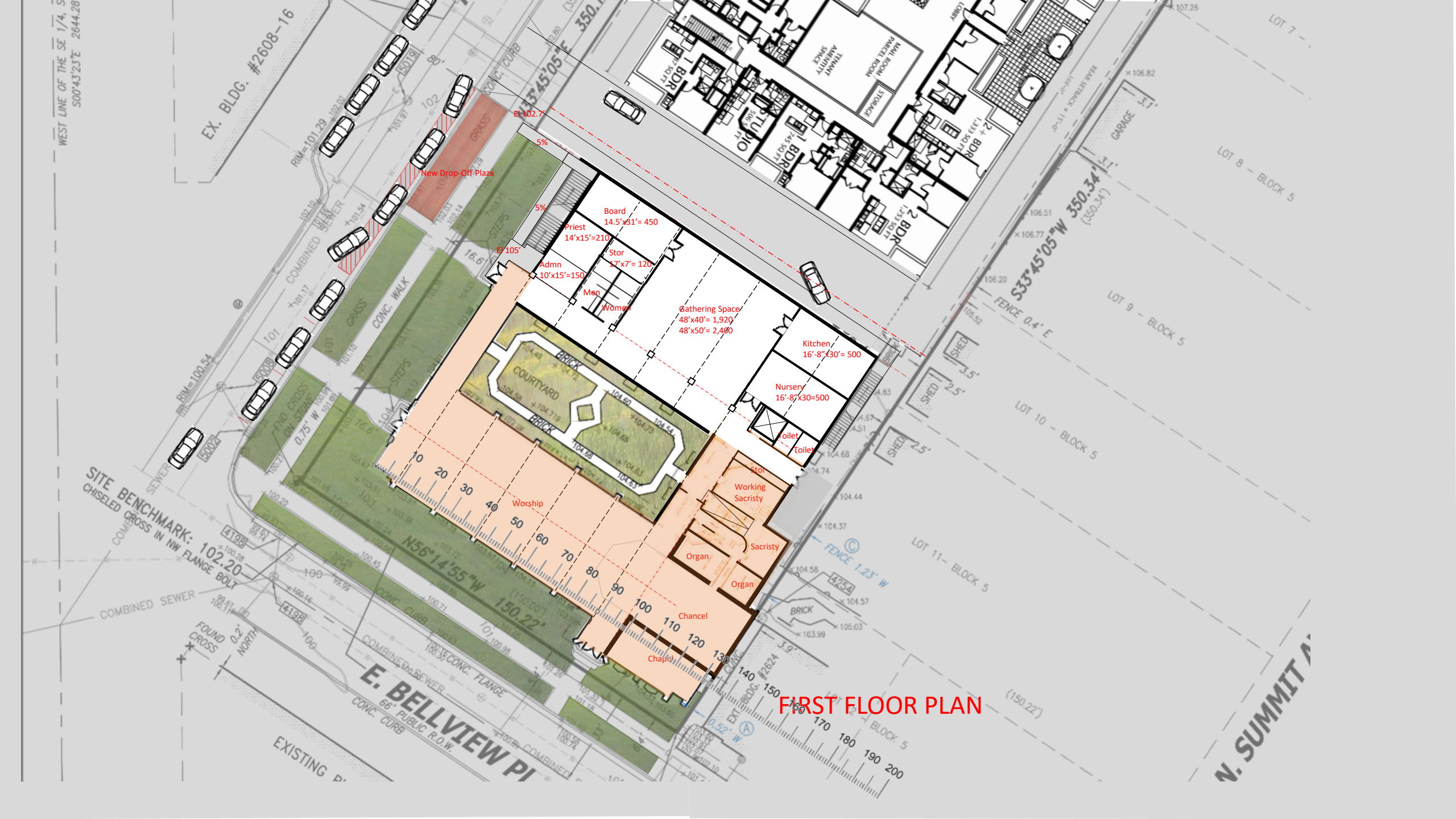


**Proposed demolition of the 1949 “Box”,
with the 1949 Cloisters to remain.**

1. The very poor condition of the 1949 addition’s salient feature: the stone surrounds are almost entirely cracked and broken and appear in danger of collapse.
2. The 1949 Box has 5 levels with inaccessible stairs between them.
3. The building was clad using Portland cement mortar with no expansion joints. Significant deterioration can be observed at corners.
4. The building has no insulation, no air, water or vapor barriers and has single pane steel windows.
5. The building is too large for the parish to maintain with spaces currently vacant.
6. The Parish has decided to subdivide its huge, largely vacant property with a new lot line within the 1949 Box.
7. The Historic Designation report, siting the significance of the 1949 cloister work, is silent on the contribution of the 1949 Box to the district.







FIRST FLOOR PLAN

WEST LINE OF THE SE 1/4, S
S00°43'23"E 2644.28'

EX. BLDG. #2608-16

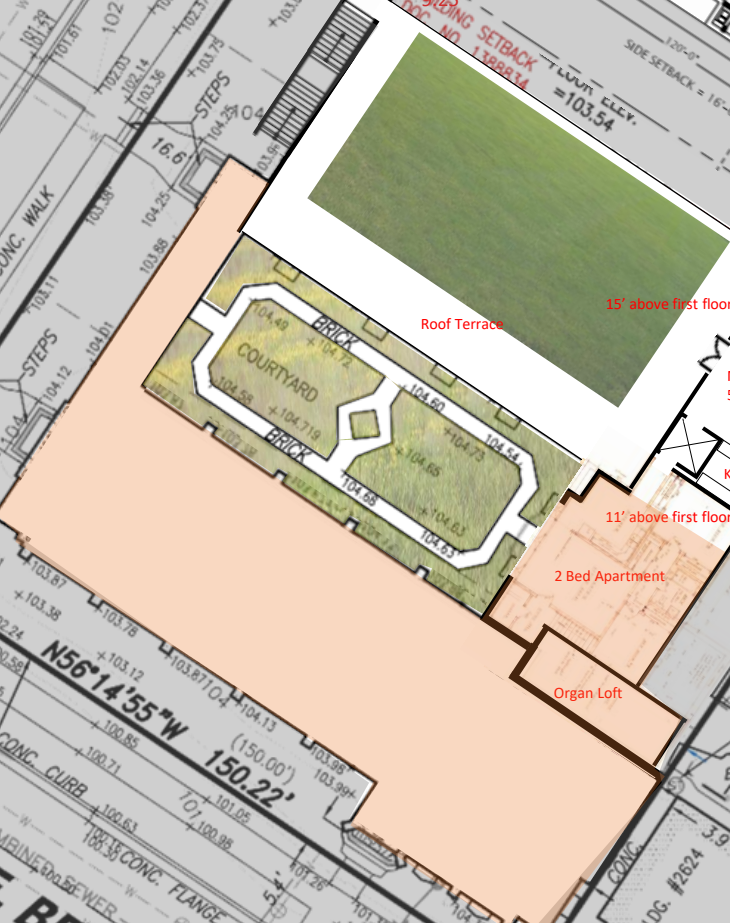
N33°45'05"E 350.11'

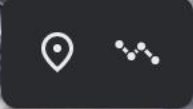
S33°45'05"W 350.34'
(350.34')

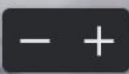
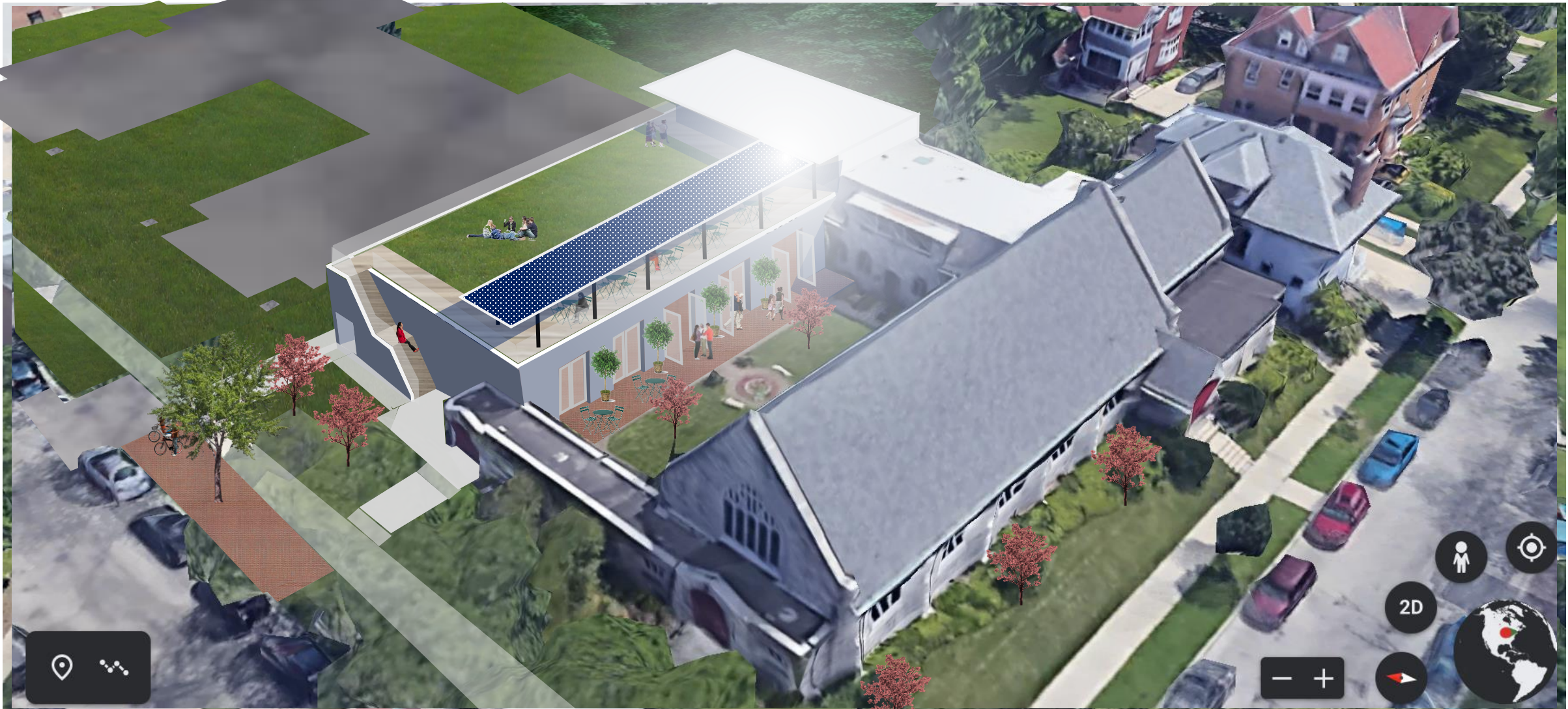
SITE BENCHMARK:
CHISELED CROSS IN NW FLANGE BOLT
102.20

E. BELLVIEW PI
66' PUBLIC R.O.W.
CONC. CURB

SECOND FLOOR PLAN







WEST LINE OF THE SE 1/4,
S00743723E 2644.28'

EX. BLDG. #2608-16

150.10'

Children
480

MECH
28x32 = 868
(7% of new SF)

EL 105.00'

Toilets

Office
120

Office
120

Choir
27x28 = 756

Work
320

Storage
545

Children
500

Acolytes
180

52'

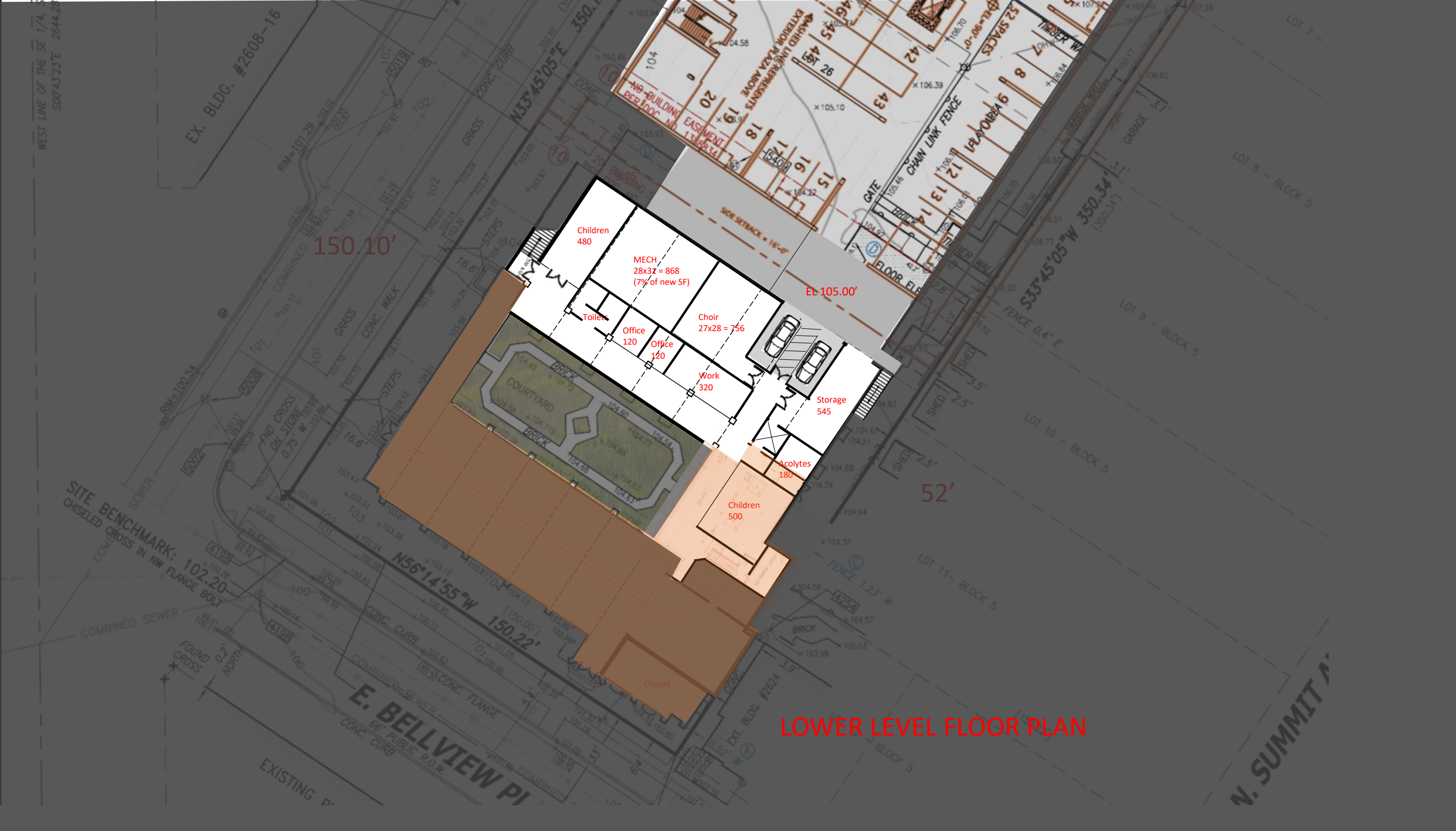
Chapel

LOWER LEVEL FLOOR PLAN

SITE BENCHMARK:
CHISELED CROSS IN NW FLANGE BOLT
102.20

E. BELLVIEW PI
CONC CURB
86' PUBLIC R.O.W.

N. SUMMIT A'

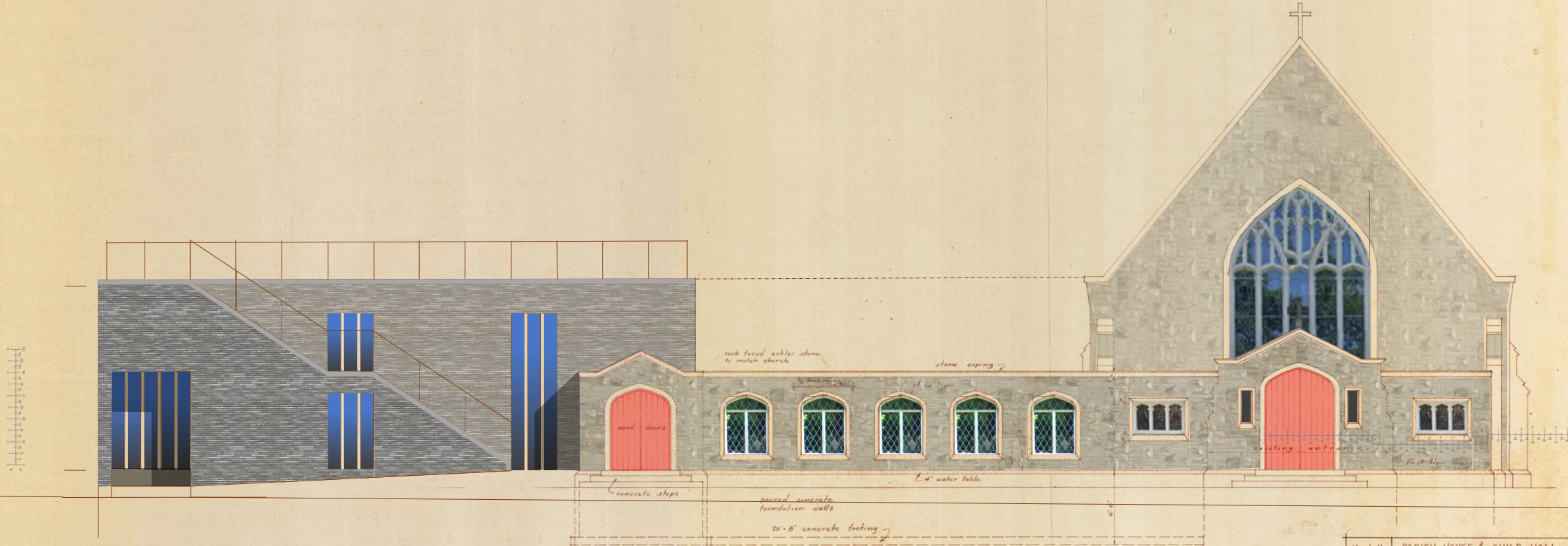


Architectural drawing showing a series of vertical lines and dots, likely representing a scale or a specific detail of the building's structure.



ELEVATION OF BRIDES' WALK
1/8" = 1'-0"

Sheet No. 6
 PARISH HOUSE & GUILD HALL
 ST MARKS EPISCOPAL CHURCH
 2618 North Hackett Avenue
 Milwaukee, Wisconsin
 Arthur L. & Arthur W. Sedenschwartz
 Architects - 2104 N. 4th St. Milwaukee
 May 14, 1949



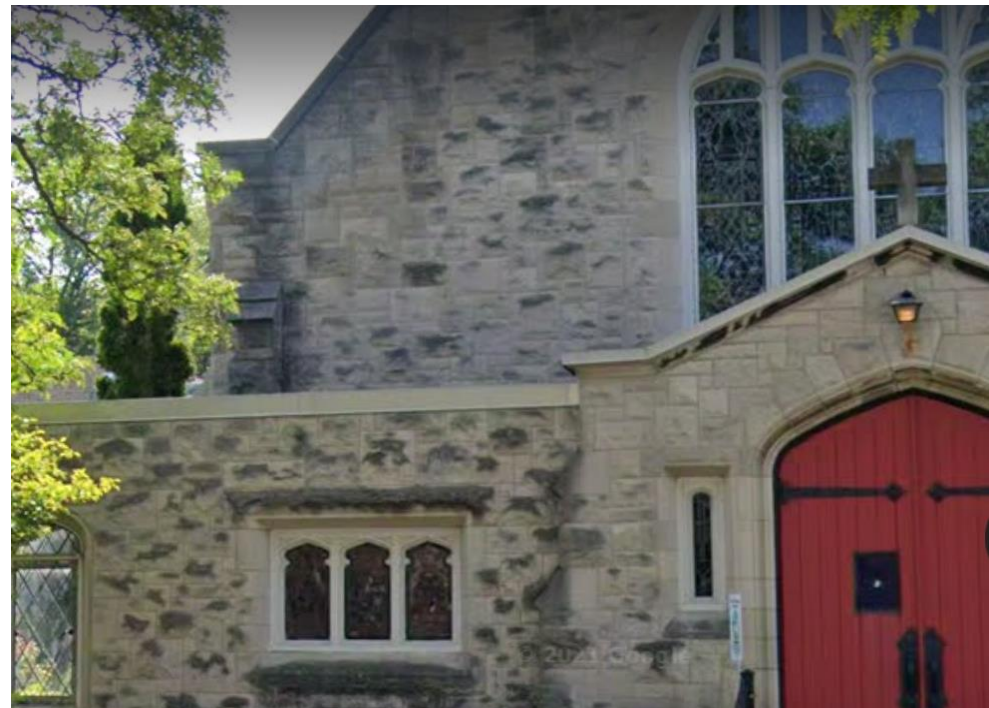
ELEVATION OF BRIDES' WALK
1/8" = 1'-0"

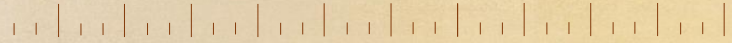
Sheet No.	PARISH HOUSE & GUILD HALL
6	ST MARKS EPISCOPAL CHURCH
	2618 North Hackett Avenue
	Milwaukee, Wisconsin
	Arthur L. & Arthur W. Sedenschwartz
May 14, 1949	Architects - 2104 N. 4th St. Milwaukee



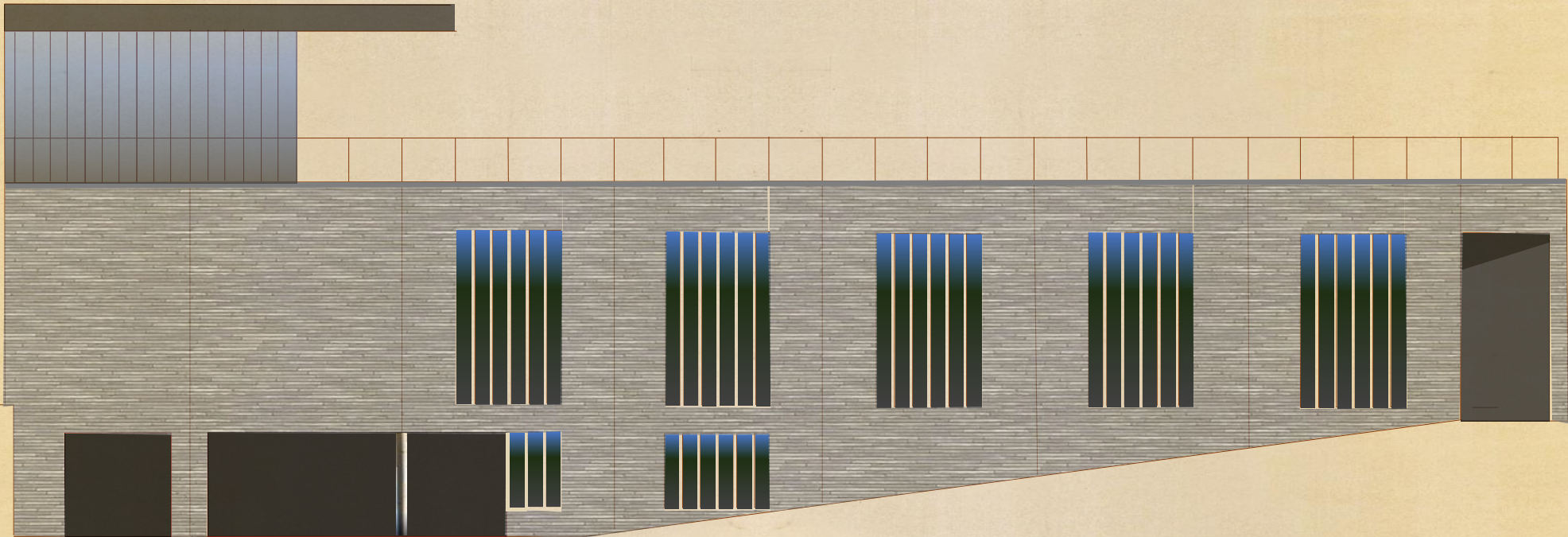


Possible use of linear brick





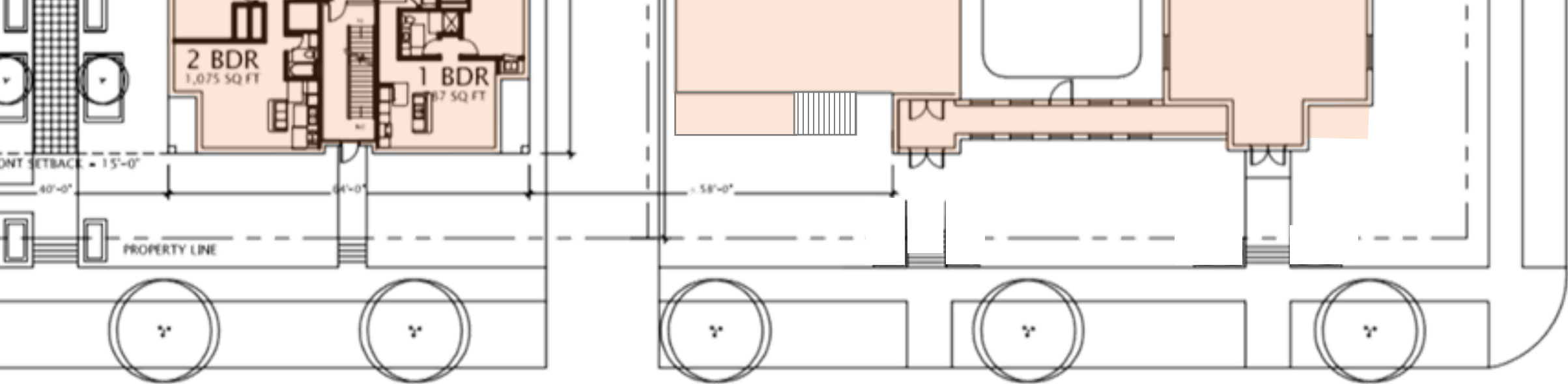
Architectural section drawing showing a long, low building with a series of vertical window openings and a dark horizontal element above the left side. The drawing is rendered in a minimalist style with a light beige background.





Possible use of dark contrasting stone

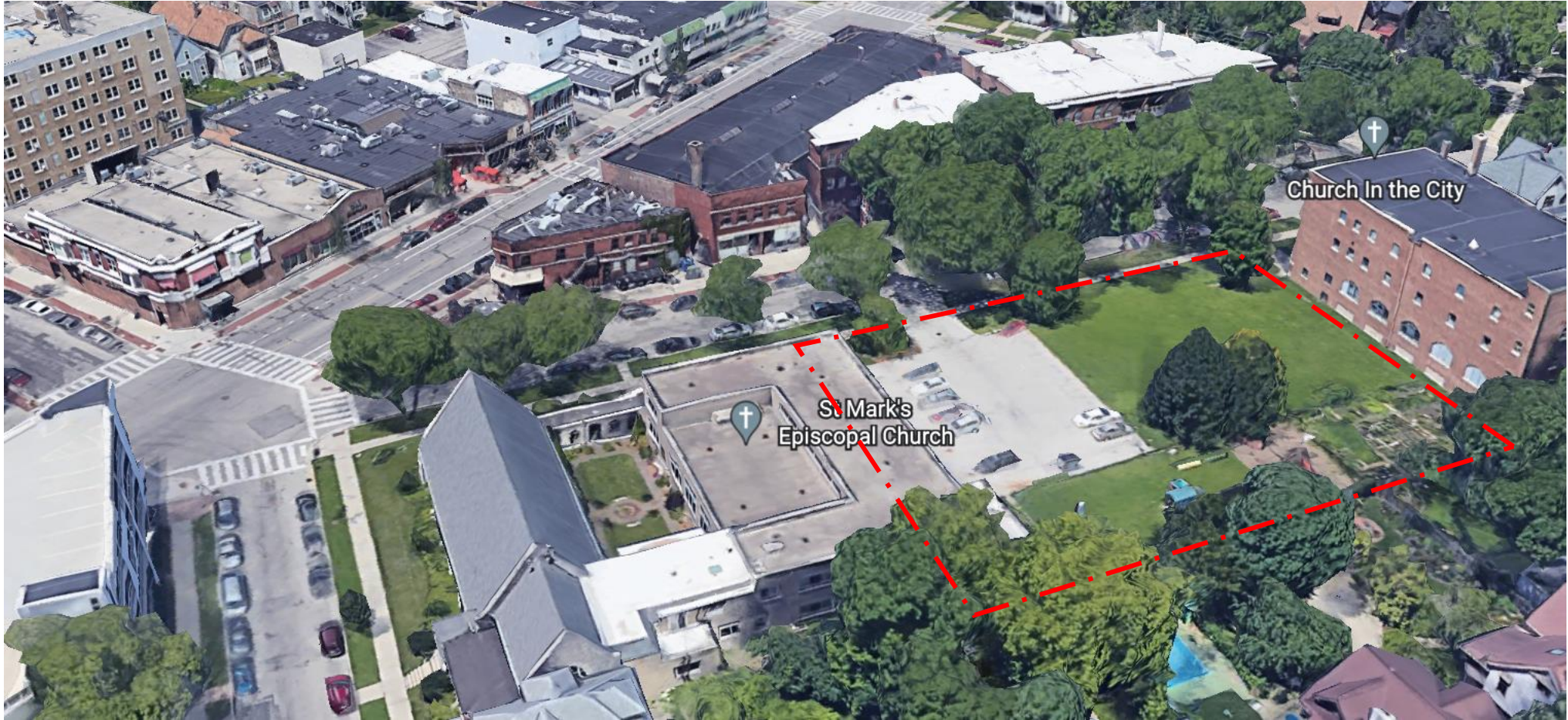




N. HACKETT AVE.

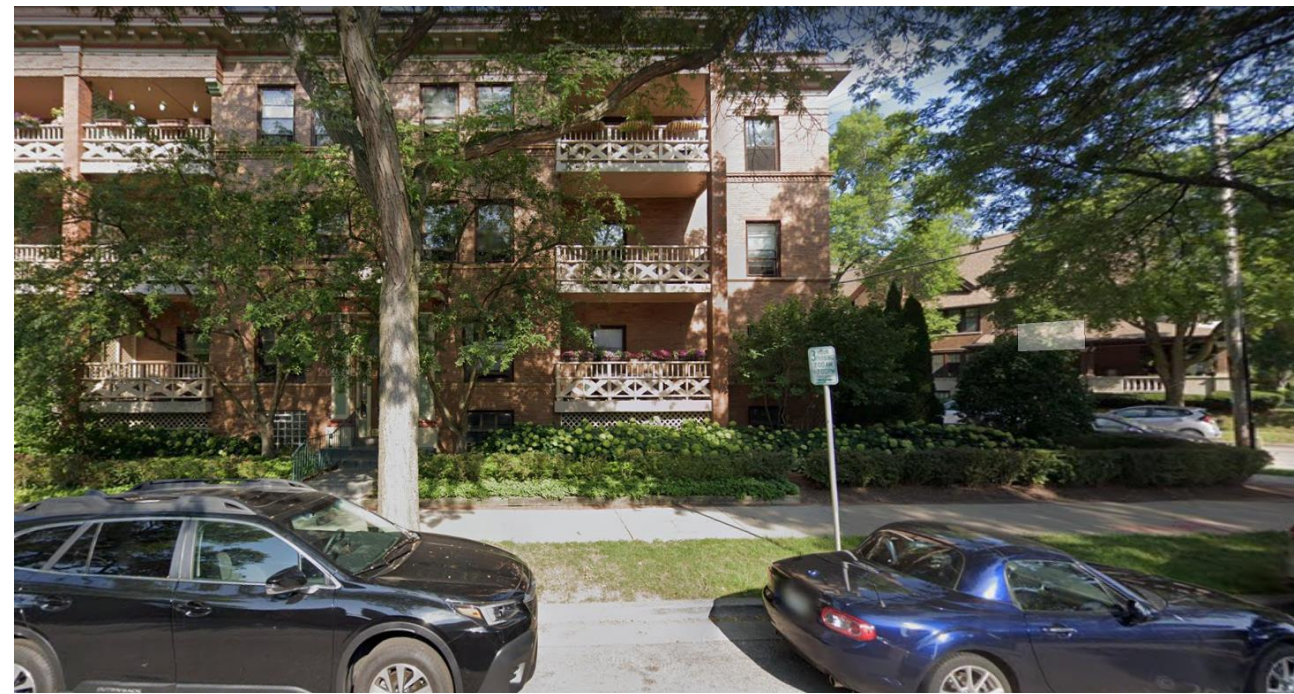


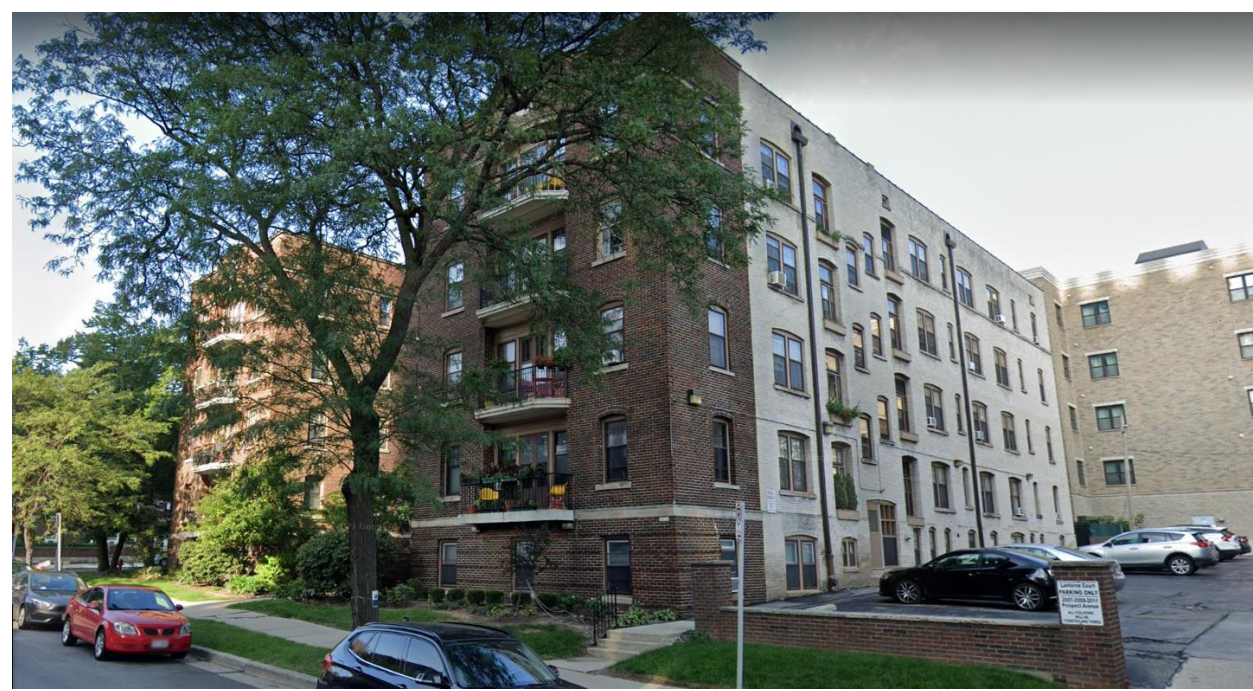




St Mark's
Episcopal Church

Church In the City

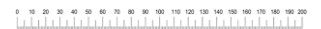






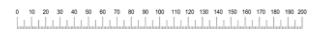


LANDMARK
BUILDINGS

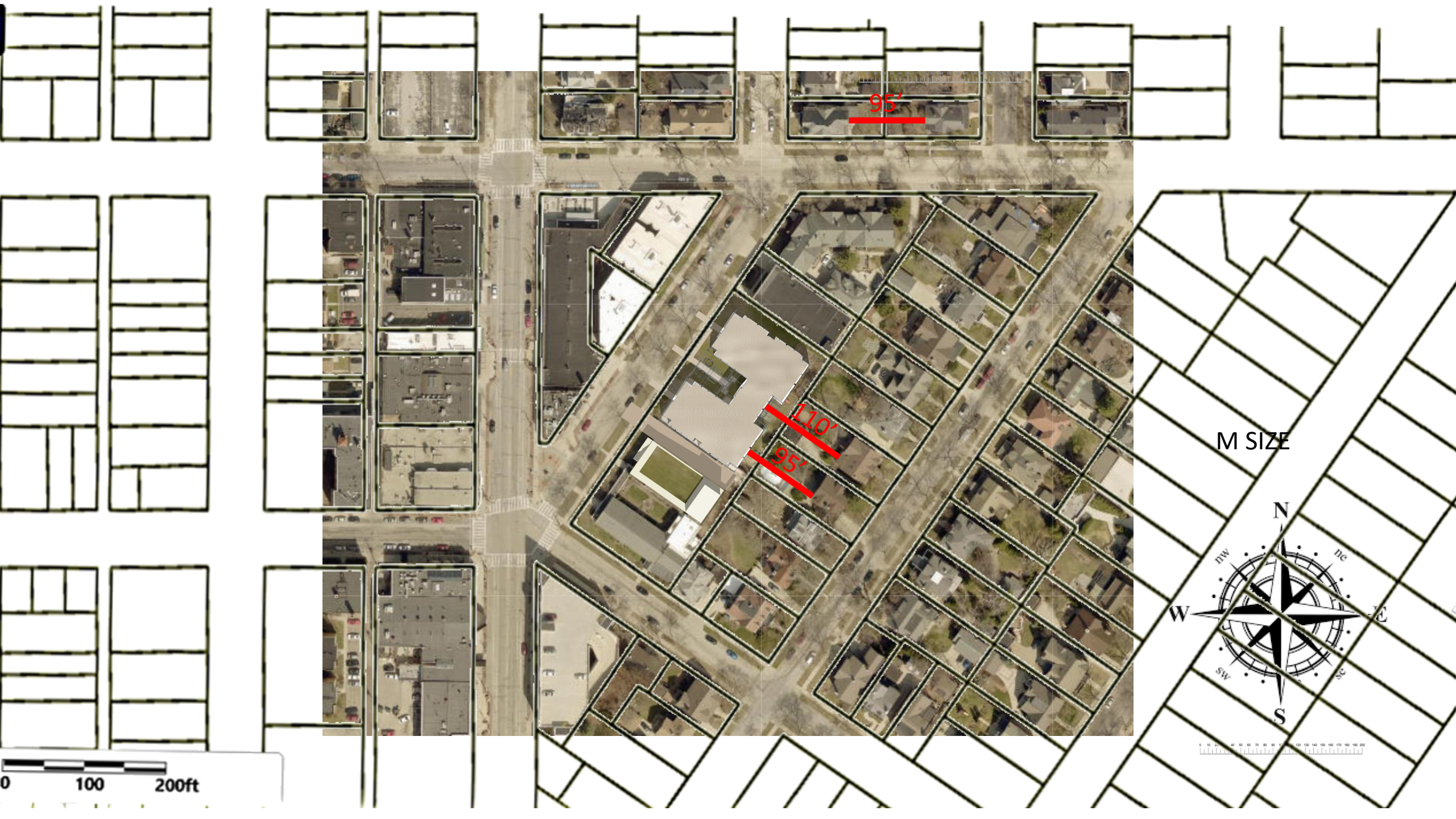




COURTYARDS







95'

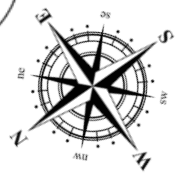
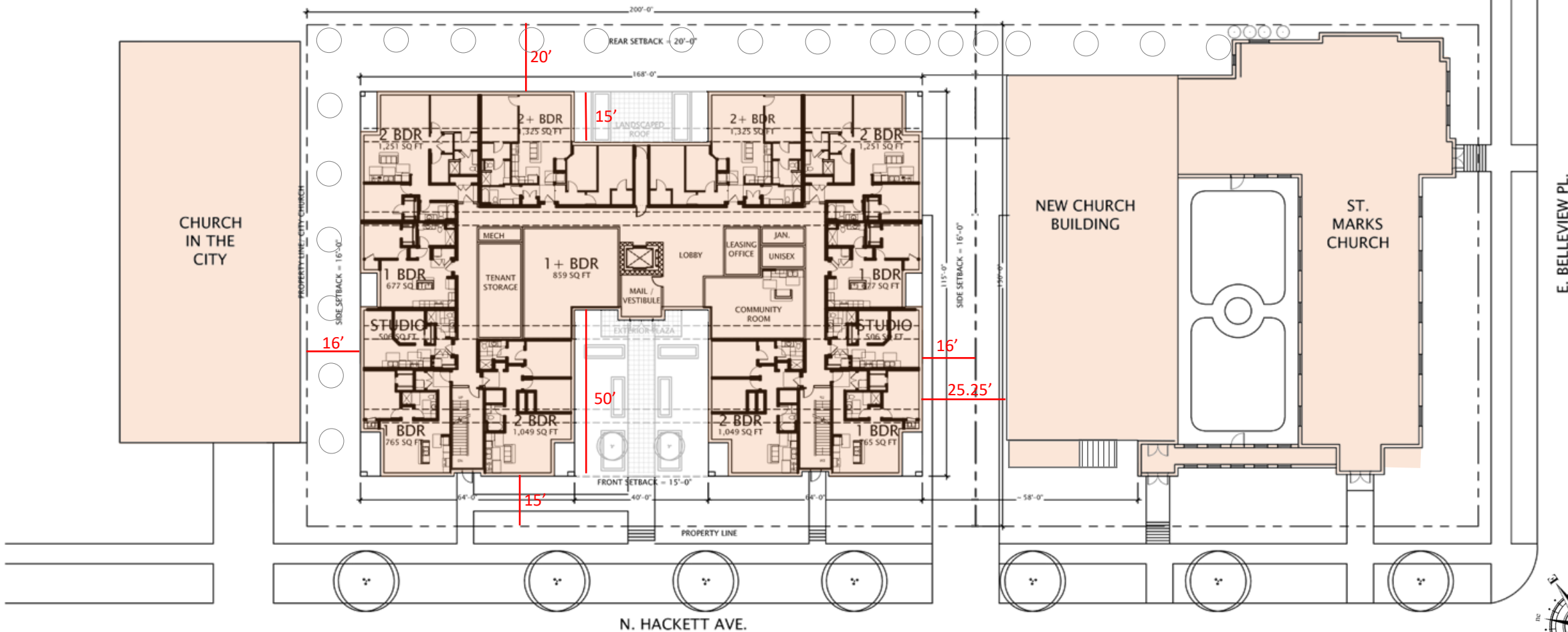
110'

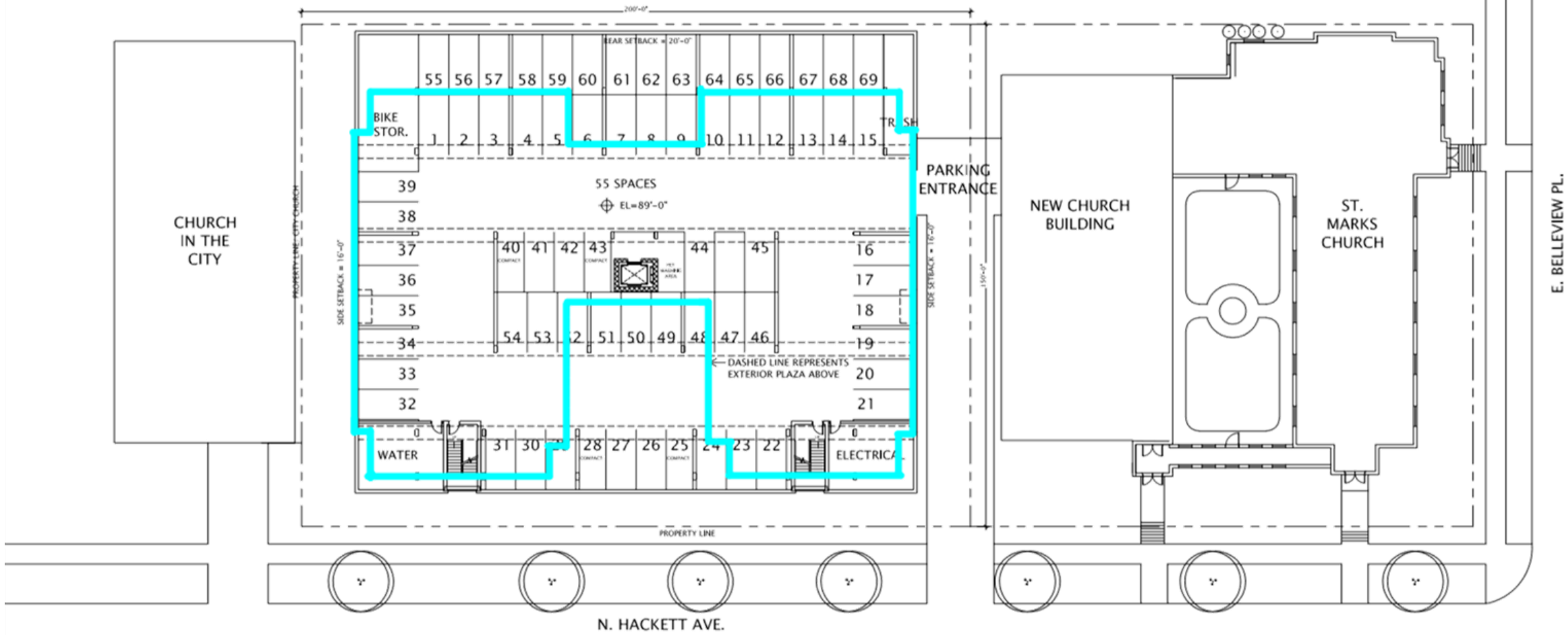
95'

M SIZE

0 100 200ft

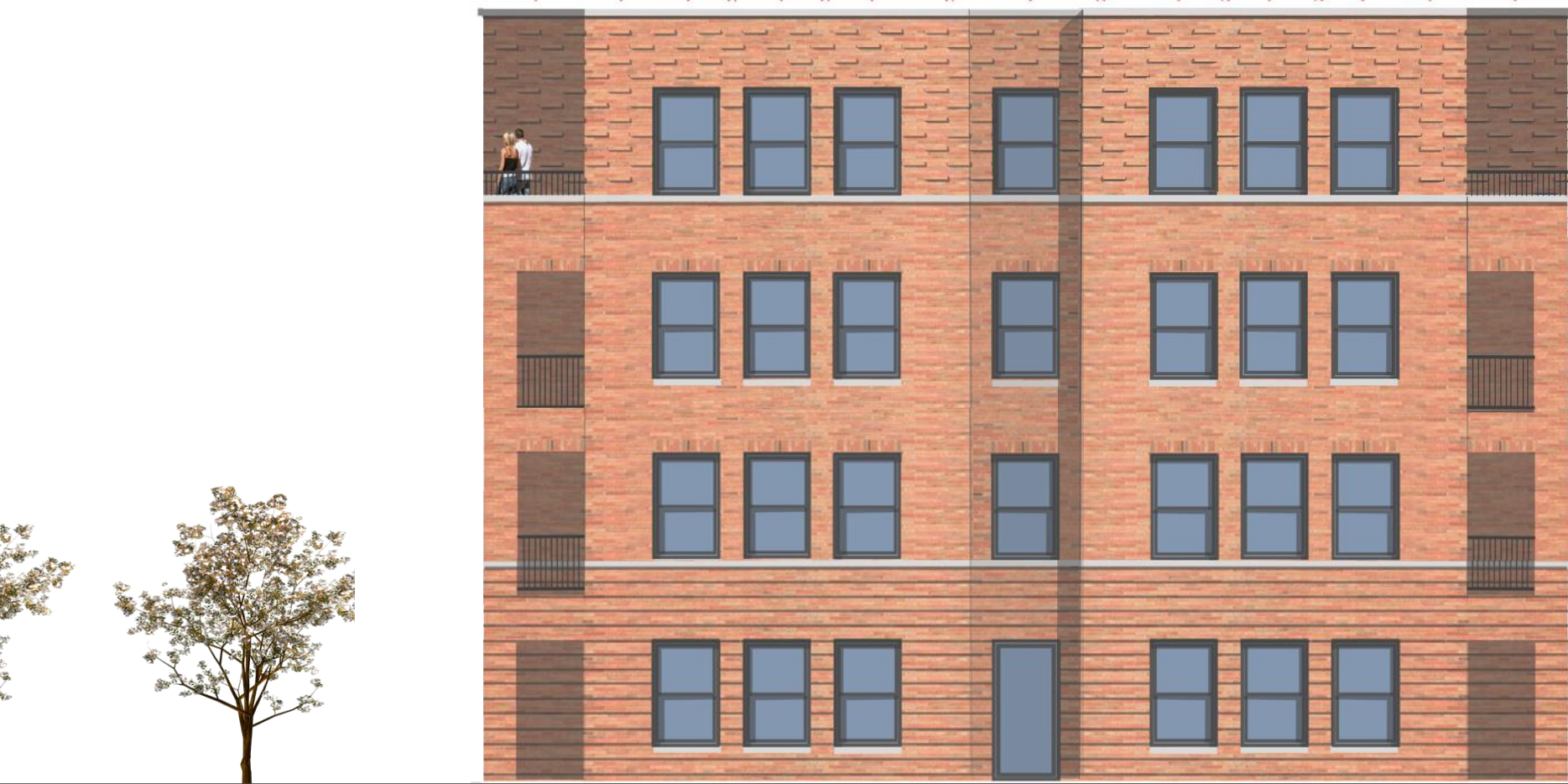
0 10 20 30 40 50 60 70 80 90 100 110 120 130 140 150 160 170 180 190 200





E. BELLEVIEW PL.

N. HACKETT AVE.



Typical West End Elevation

4'

5'-4"

4'

1'-4"

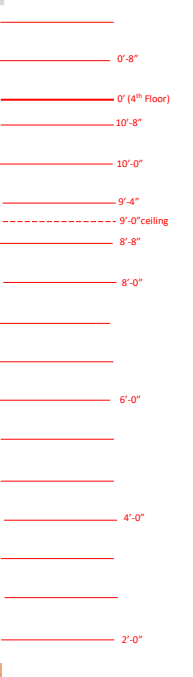
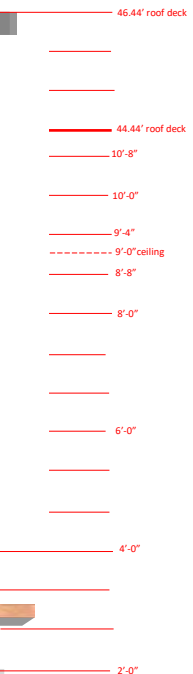
4'

1'-4"

4'

4'

6'



3rd & 4th FLOOR STUDY

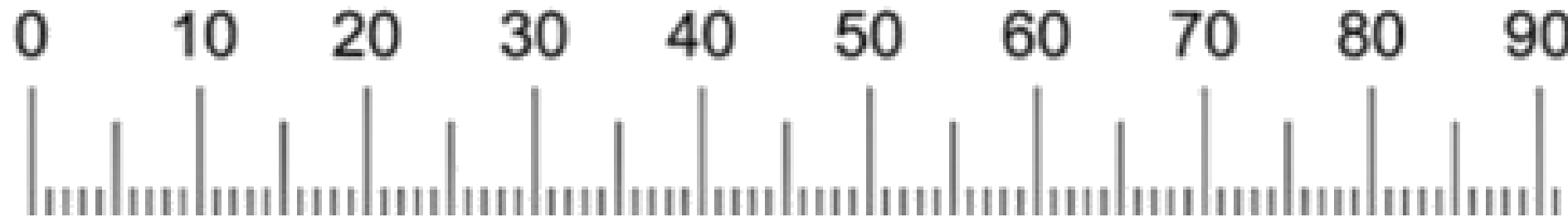


1st & 2nd FLOOR STUDY



West Elevation





Section thru Courtyard Looking South

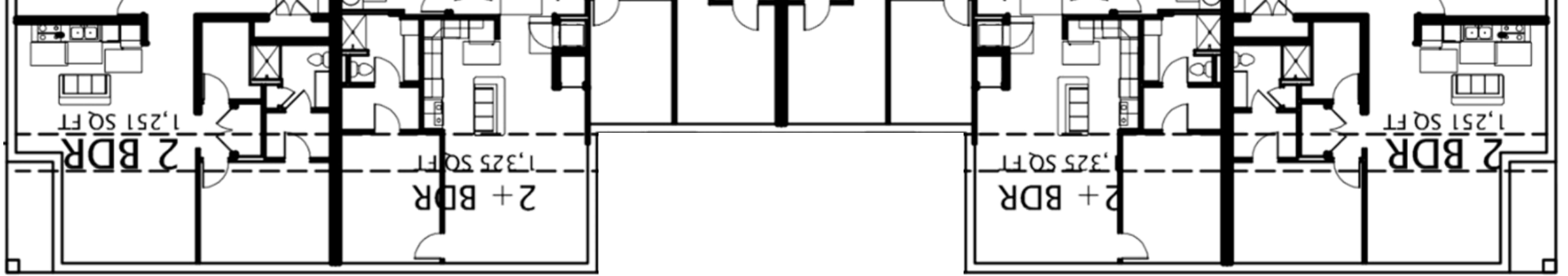




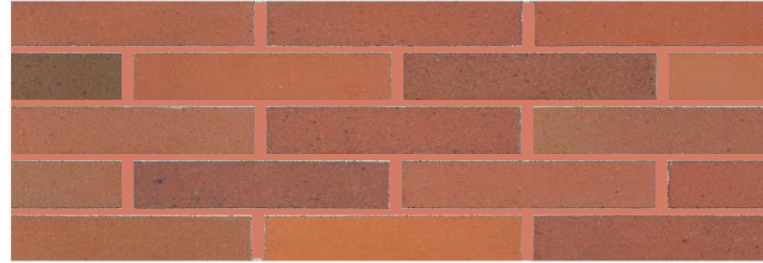
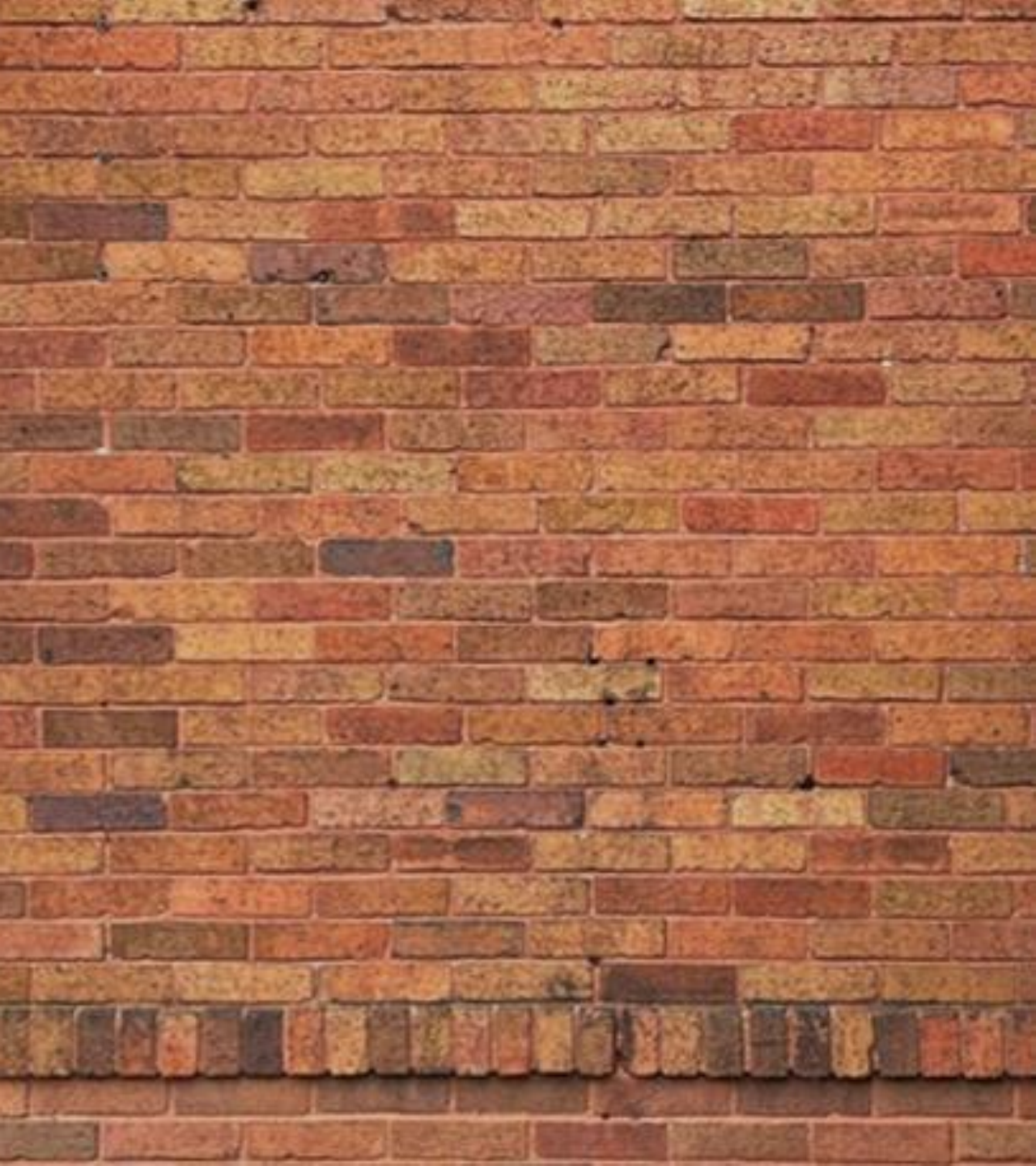
North Elevation Face Brick Return w Light Grey Brick



South Elevation Face Brick Return w Light Grey Brick

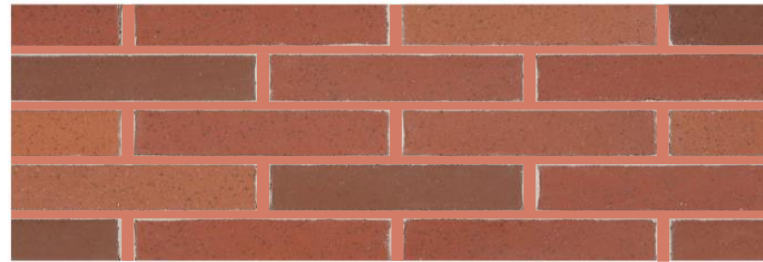


East Elevation with White Brick



470-479 MEDIUM RANGE SMOOTH

Type	Face
Color	Brown
Texture	Smooth
Plant	Plant 4
Manufacturing Method	Extruded



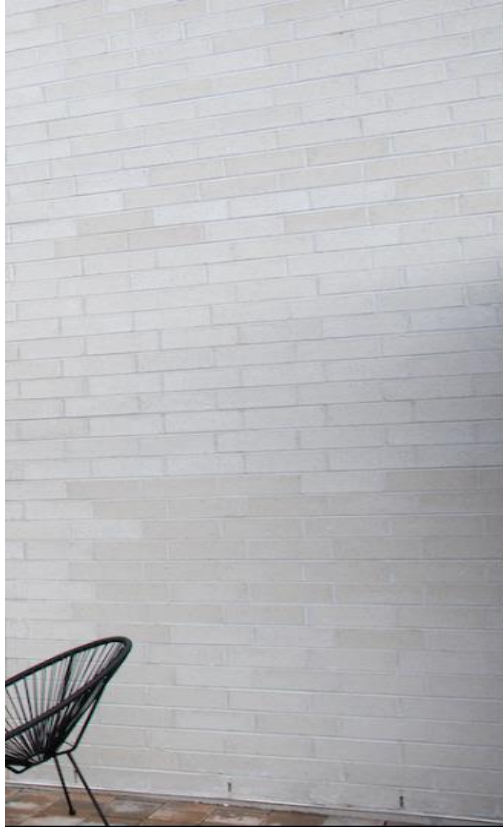
REGAL BLEND

Type	Face
Color	Red
Texture	Smooth
Plant	Plant 8
Manufacturing Method	Extruded



470-479 DARK RANGE SMOOTH

Type	Face
Color	Brown
Texture	Smooth
Plant	Plant 4
Manufacturing Method	Extruded



County Materials Heritage Collection Designer Concrete Brick, "White"

