



180233  
Sign-Gen-18-00146

## Certificate of Appropriateness—Amended

Milwaukee Historic Preservation Commission/200 E. Wells Street/Milwaukee, WI 53202/phone 414-286-5712/fax 414-286-3004

**Property**

2320 N. LAKE DR.

St. Mary's Hospital

**Description of work**

Replace two monument signs on the grounds of the old St. Mary's Hospital Building. Permanently remove all existing signs at these locations that are directly related to medical use. Historical markers will remain.

*Entry Sign*

This will be a monument sign of ~~6'1.5" x 5'1"~~ 6'9" tall by 6'6" wide. Acceptable as proposed as long as only letters and logos are illuminated. It is not acceptable if the background is illuminated.

*Corner Sign*

Replaces existing single-sided internally lit box sign with a new, better design of similar dimensions. It will be the same height of 6'6", but narrower than existing (3'1.5" at base) and have a finished rear. Text and logo as shown on the entry sign may be added to this sign at the base in an appropriate and proportionate size.

*Amendment notes:*

Per conversations with DNS and DCD that this does not violate sign standards for the zone and is acceptable to staff of those departments, the increase in size for the first sign above is approved.

**Date issued**

6/11/2018; Amended 6/18/18

PTS ID 114516 COA: 2 monument signs

In accordance with the provisions of Section 320-21 (11) and (12) of the Milwaukee Code of Ordinances, the Milwaukee Historic Preservation Commission has issued a certificate of appropriateness for the work listed above. The work was found to be consistent with preservation guidelines. The following conditions apply to this certificate of appropriateness:

**Only letters and logos may be internally lit.**

All work must be done in a craftsman-like manner, and must be completed within one year of the date this certificate was issued. Staff must approve any changes or additions to this certificate before work begins. Work that is not completed in accordance with this certificate may be subject to correction orders or citations. If you require technical assistance, please contact Historic Preservation staff as follows: Phone: (414) 286-5712 E-mail: [hpc@milwaukee.gov](mailto:hpc@milwaukee.gov).

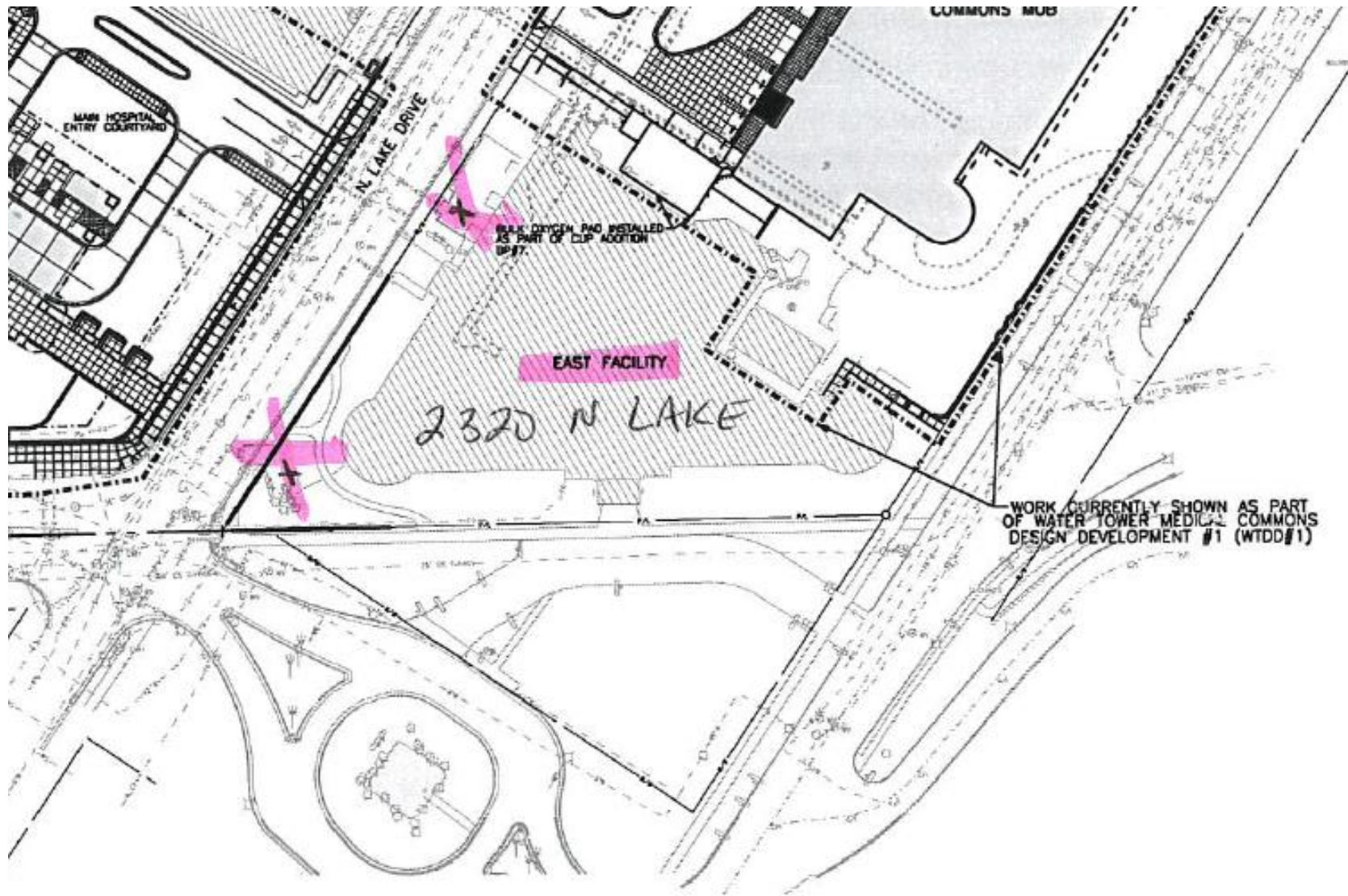
If permits are required, you are responsible for obtaining them from the Milwaukee Development Center. If you have questions about permit requirements, please consult the Development Center's web site, [www.milwaukee.gov/build](http://www.milwaukee.gov/build), or call (414) 286-8210.



---

City of Milwaukee Historic Preservation Staff

Copies to: Development Center, Ald. Nik Kovac, Contractor, Kristin Connelly



Site plan for replacement signs.

Sign Type: Small Monument  
 Sign Code: MON.47.BW  
 Quantity: 1  
 Attachment: Base/Plinth  
 Illumination: Internal  
 Approx. Size:  
 H: 5'-0"  
 W: 6'-6"  
 OAH: 6'-9"  
 Comment:



Context



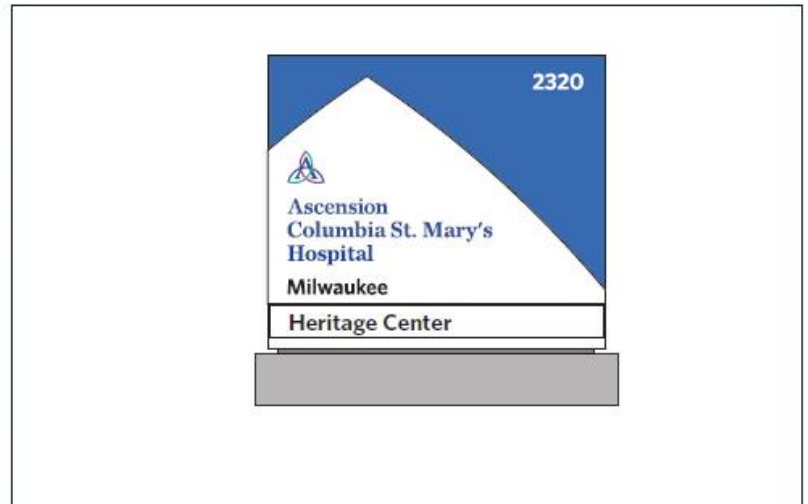
Detail Side A



Detail Side B



Recommended - Side A

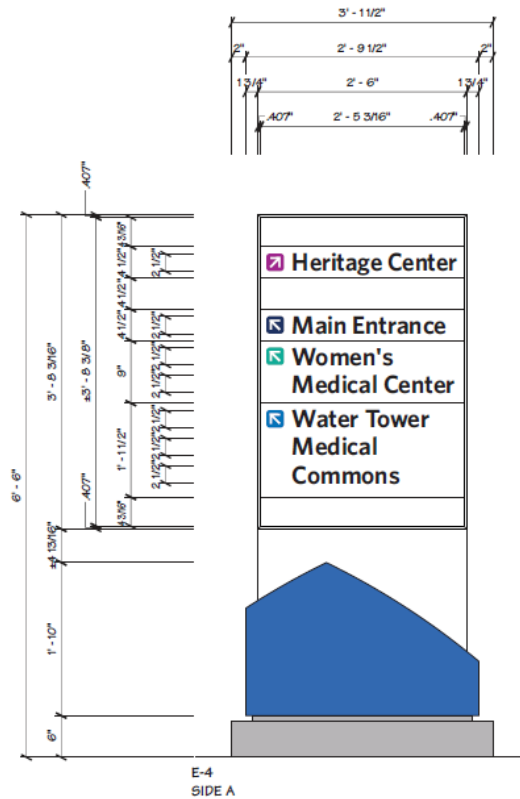


Recommended - Side B

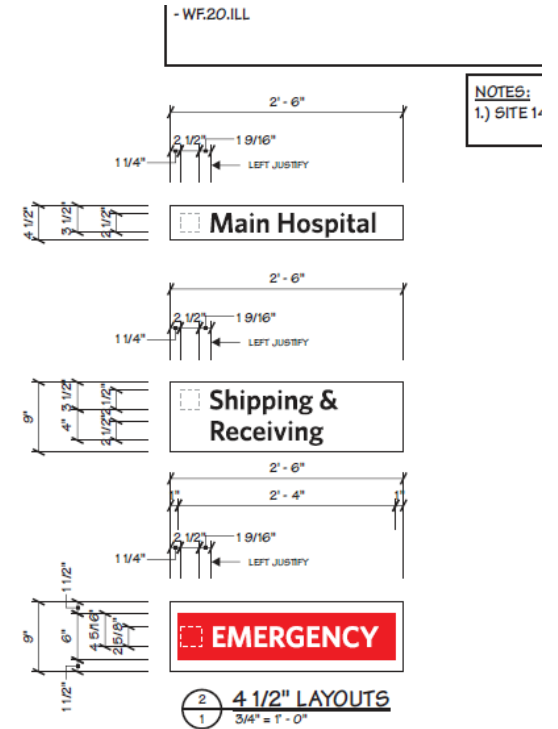
Lake Drive sign, mid-block. Top sign will be replaced with design at bottom.

COPY IS Routed AND BACKED  
 W/ **DULITE DAY/NIGHT BLACK ACRYLIC**  
 -COPY STYLE IS WHITNEY SEMI BOLD

AGI EXTRUDED BODY **PAINTED MP59851 R163470**  
**SV SATIN V1.0 'OPAQUE WHITE' W/ SATIN FINISH**

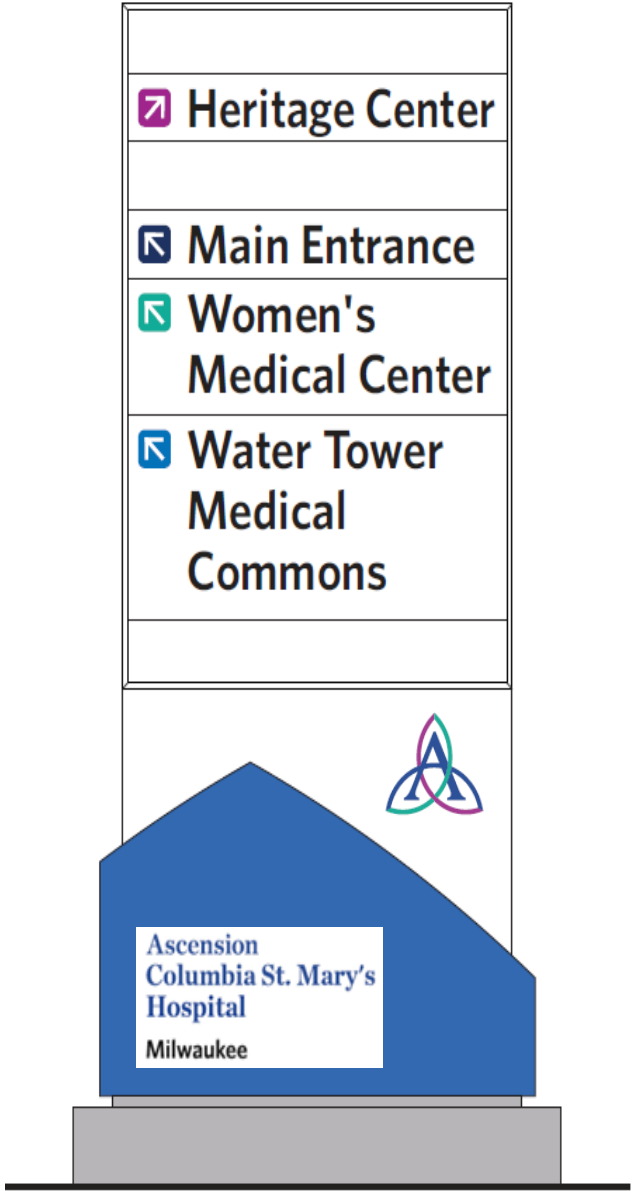


1 GRAPHIC LAYOUT  
 1 3/4" = 1'-0"



Sign for northeast corner of Lake and North. All existing hospital-related signs excepting historical markers are to be removed from this location.

Possible revision for sign at intersection Lake and North. Logo and text may be added at owner's option. Text should not have white background.



E-4  
SIDE A



Scaled view from intersection of corner sign.