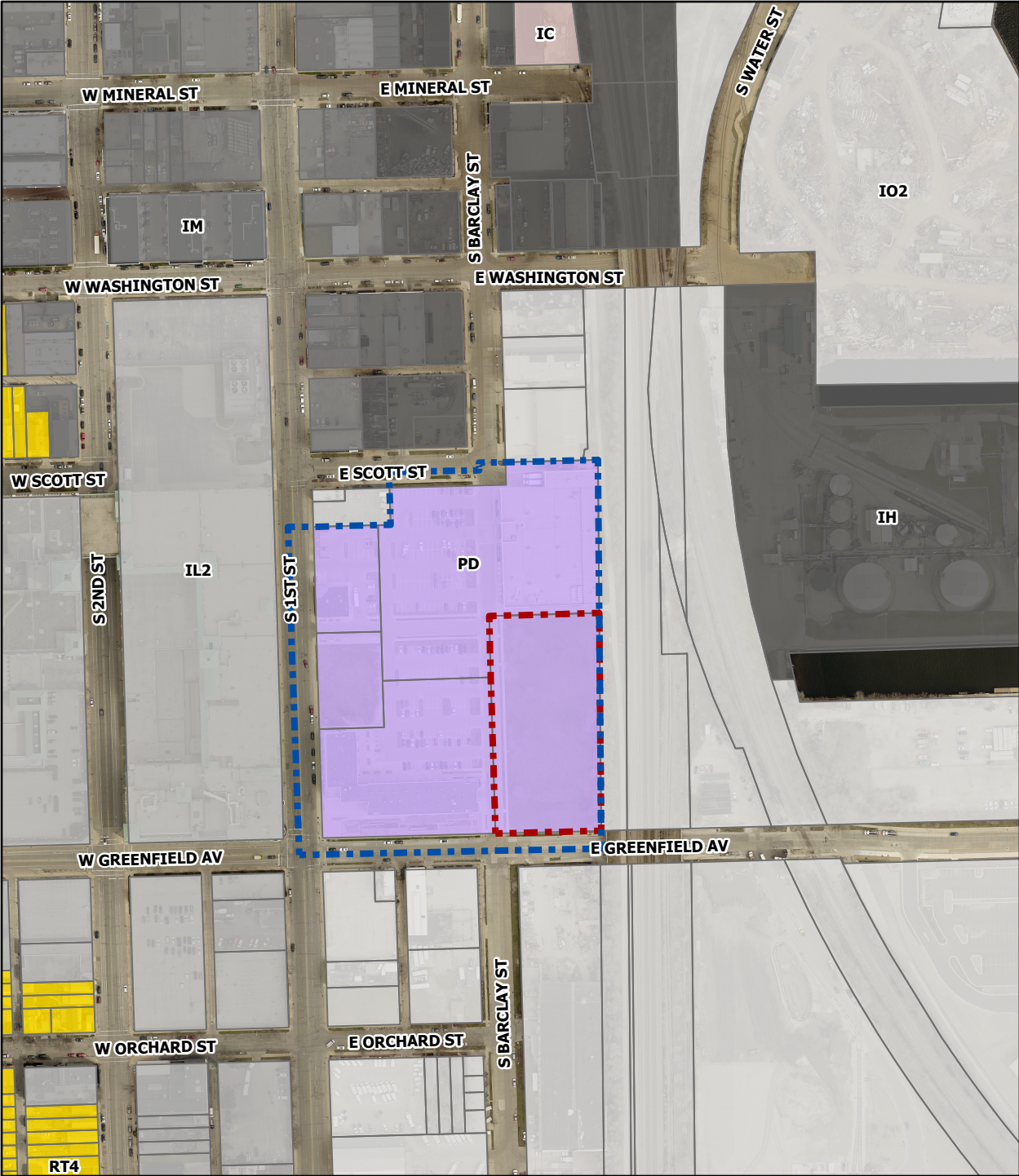




File Nos. 240162 and 230879
4th Amend. to GPD and 4th Amend. to DPD
Freshwater Plaza
200 E. Greenfield Av. (Phase 3, Lot 4)



LEGEND

-  FRESHWATER PLAZA GENERAL PLANNED DEVELOPMENT (GPD)
-  FRESHWATER PLAZA DETAILED PLANNED DEVELOPMENT

Zoning

-  RESIDENTIAL: SINGLE-FAMILY
-  RESIDENTIAL: TWO-FAMILY
-  RESIDENTIAL: MULTI-FAMILY
-  RESIDENTIAL AND OFFICE DISTRICTS
-  CENTRAL BUSINESS DISTRICT: CIVIC ACTIVITY
-  CENTRAL BUSINESS DISTRICT: HIGH-DENSITY RESIDENTIAL
-  CENTRAL BUSINESS DISTRICT: MAJOR RETAIL
-  CENTRAL BUSINESS DISTRICT: MIXED ACTIVITY
-  CENTRAL BUSINESS DISTRICT: NEIGHBORHOOD RETAIL
-  CENTRAL BUSINESS DISTRICT: OFFICE AND SERVICE
-  CENTRAL BUSINESS DISTRICT: RESIDENTIAL AND SPECIALTY USE
-  CENTRAL BUSINESS DISTRICT: WAREHOUSING AND LIGHT MANUFACTURING
-  COMMERCIAL: NEIGHBORHOOD SHOPPING
-  COMMERCIAL: LOCAL BUSINESS
-  COMMERCIAL: COMMERCIAL SERVICE
-  COMMERCIAL: REGIONAL BUSINESS
-  INDUSTRIAL: COMMERCIAL
-  INDUSTRIAL: OFFICE
-  INDUSTRIAL: LIGHT
-  INDUSTRIAL: MIXED
-  INDUSTRIAL: HEAVY
-  SPECIAL: PARKS
-  SPECIAL: INSTITUTIONAL
-  SPECIAL: PLANNED DEVELOPMENT
-  SPECIAL: REDEVELOPMENT
-  UNKNOWN OR PENDING

