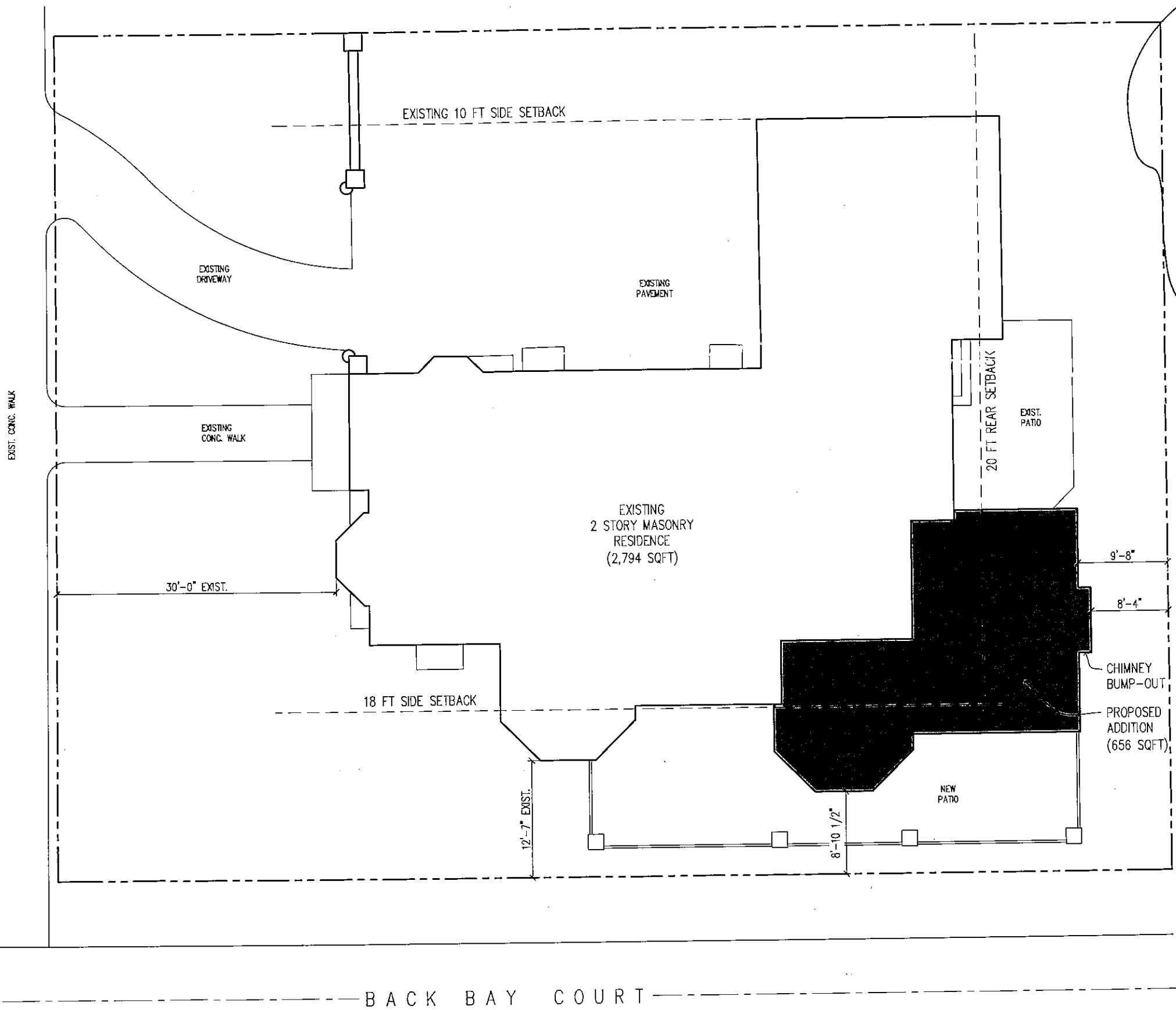


TERRACE AVE



*Recd.  
11:11am  
10/19/11  
P.D.*

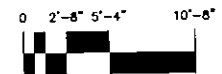
BACK BAY COURT

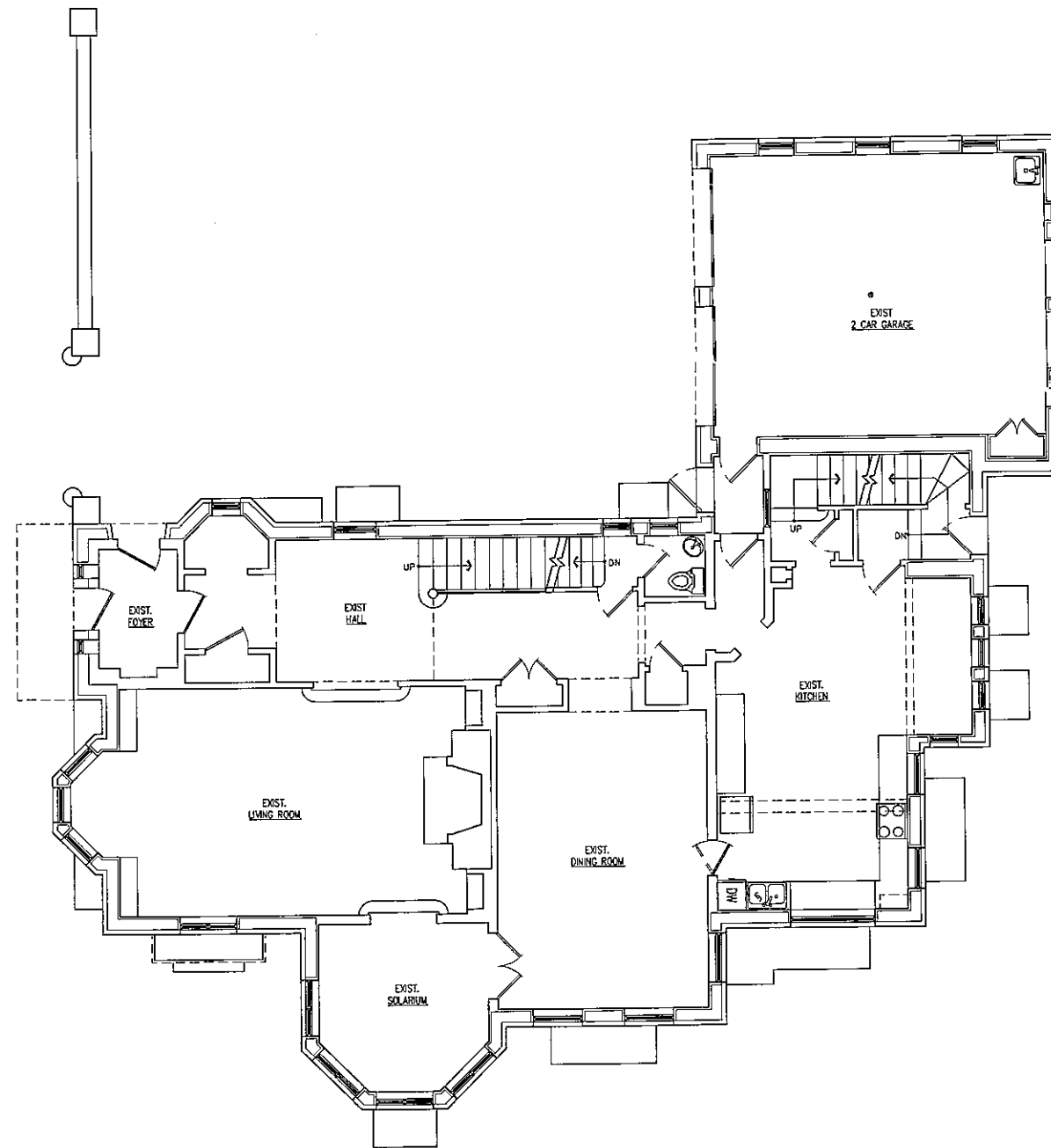
# PROPOSED REMODELING TO

2134 N TERRACE AVE  
MILWAUKEE, WI

SITE PLAN  
SCALE: 3/16"=1'-0"

SEPTEMBER 7, 2011

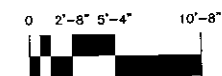


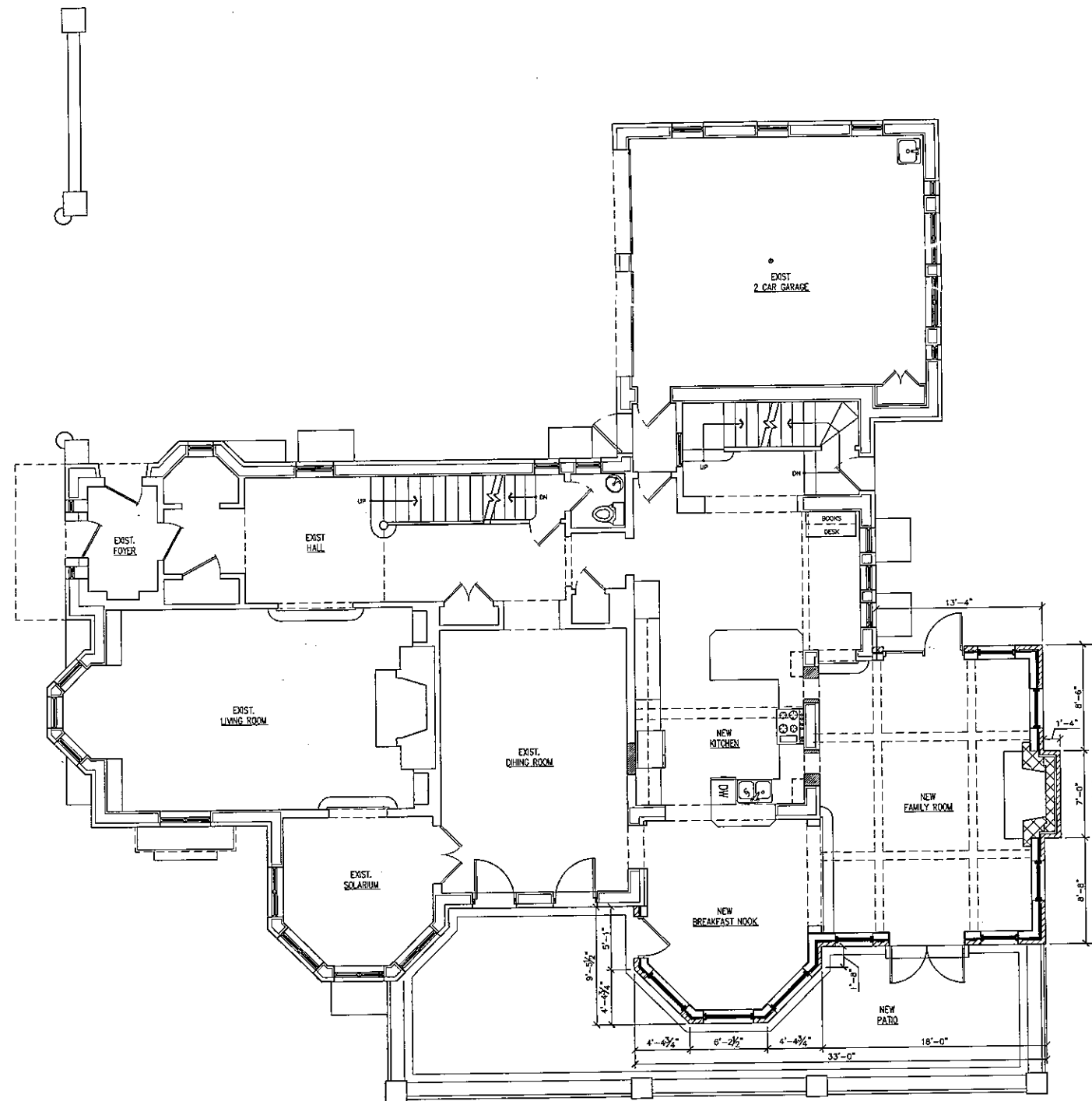


PROPOSED REMODELING TO  
 2134 N TERRACE AVE  
 MILWAUKEE, WI

EXISTING FIRST FLOOR PLAN  
 SCALE: 3/16"=1'-0"

SEPTEMBER 7, 2011





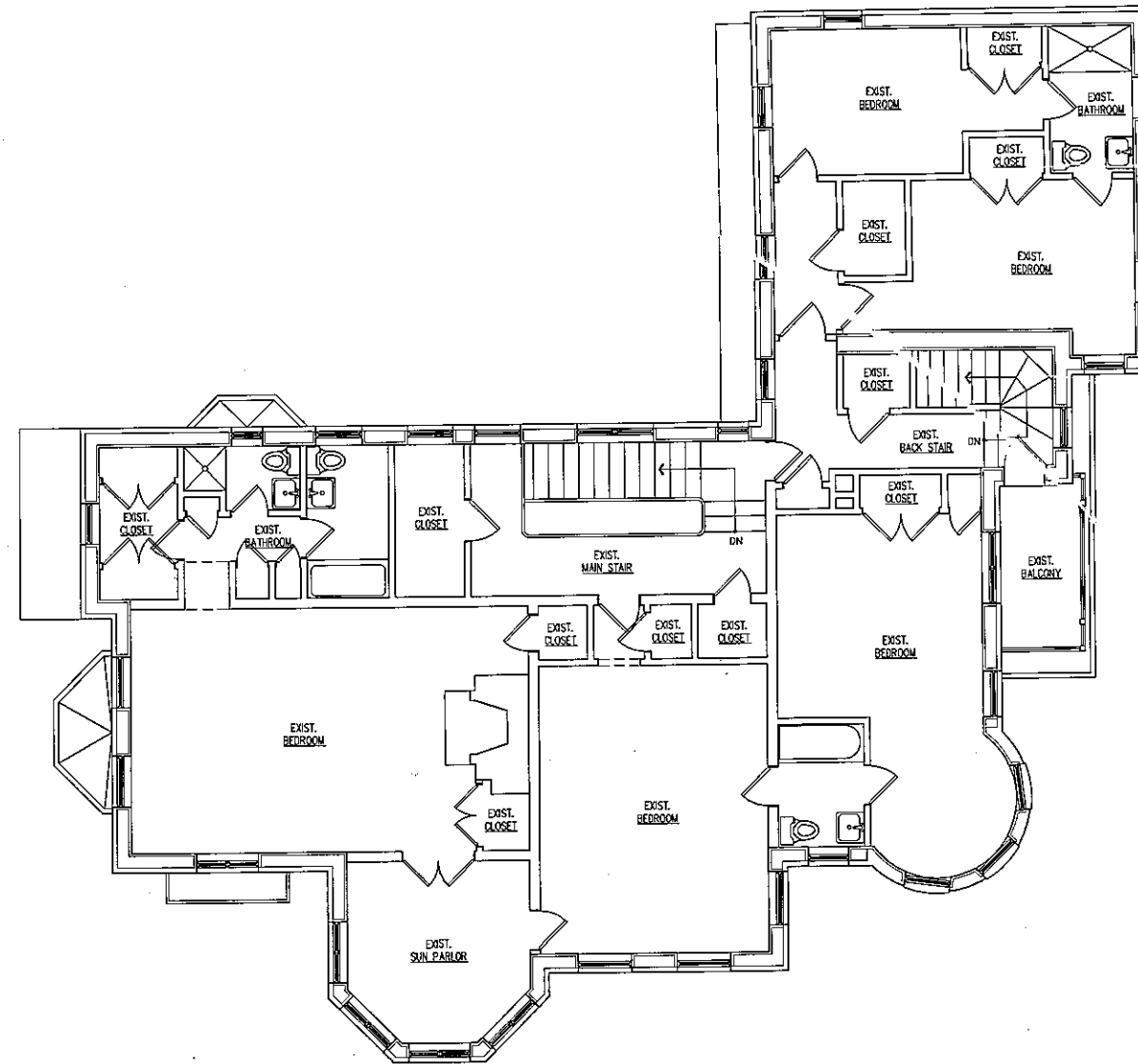
PROPOSED REMODELING TO  
 2134 N TERRACE AVE  
 MILWAUKEE, WI

NEW FIRST FLOOR PLAN  
 SCALE: 3/16"=1'-0"

SEPTEMBER 7, 2011

0 2'-8" 5'-4" 10'-8"

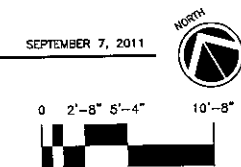
NORTH

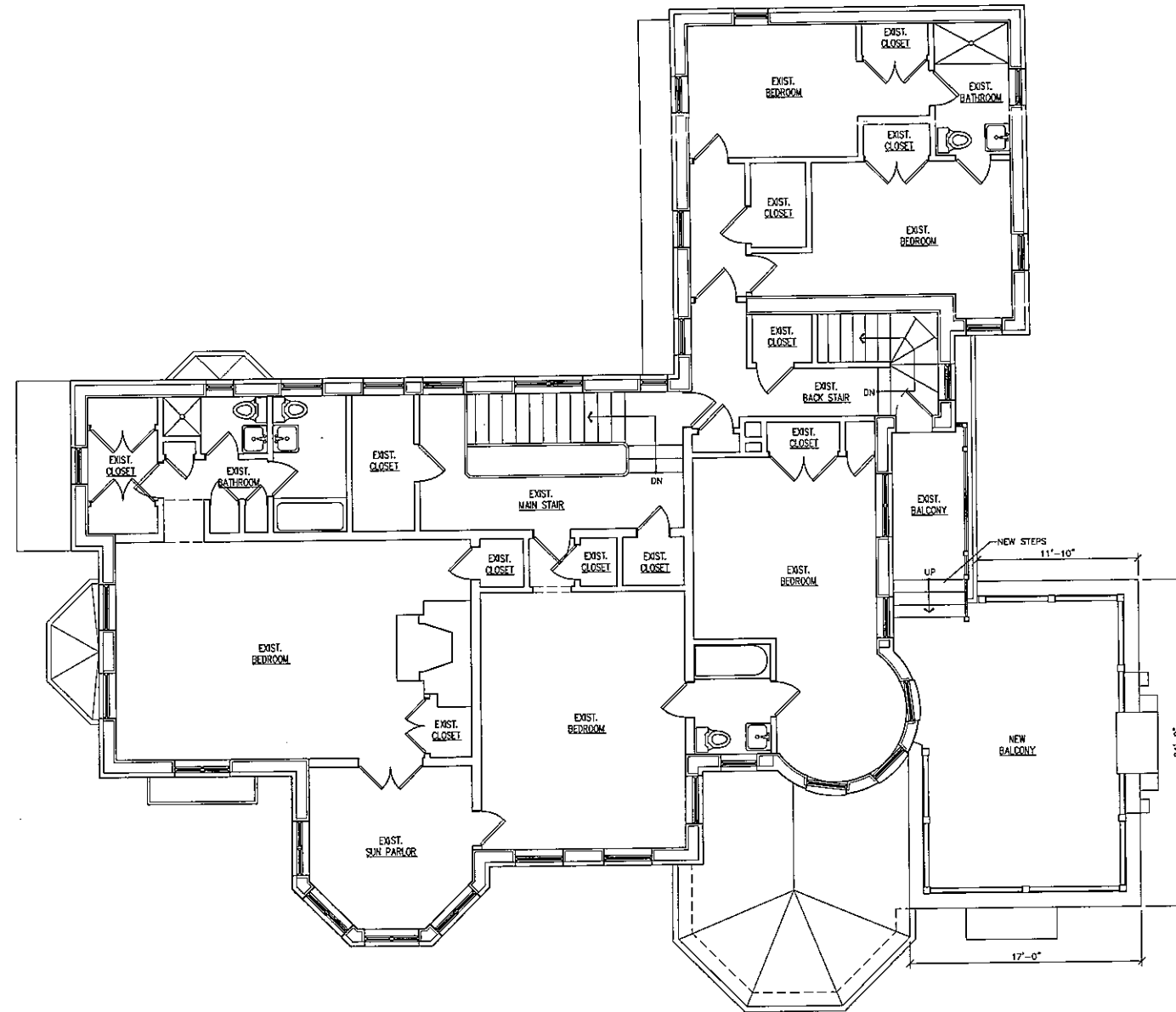


PROPOSED REMODELING TO  
 2134 N TERRACE AVE  
 MILWAUKEE, WI

EXISTING SECOND FLOOR PLAN  
 SCALE: 3/16"=1'-0"

SEPTEMBER 7, 2011





PROPOSED REMODELING TO  
 2134 N TERRACE AVE  
 MILWAUKEE, WI

NEW SECOND FLOOR PLAN  
 SCALE: 3/16"=1'-0"

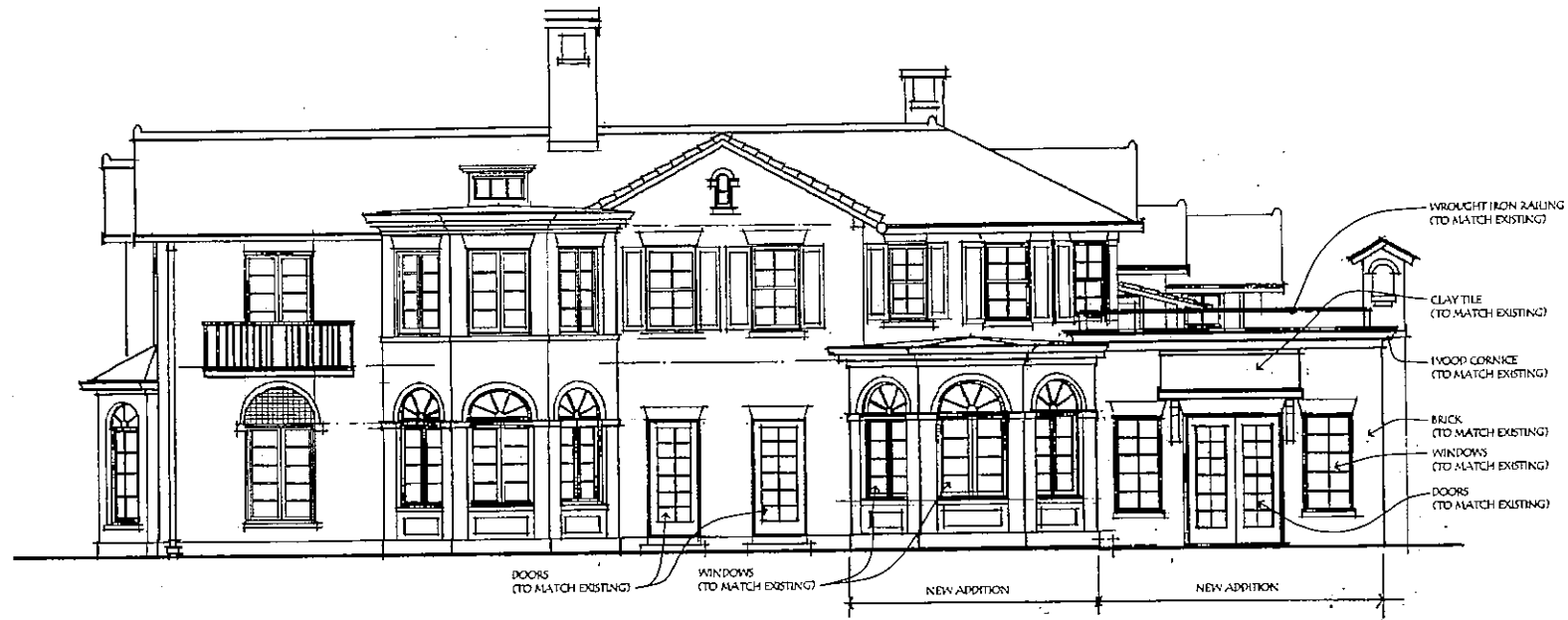
SEPTEMBER 7, 2011

0 2'-8" 5'-4" 10'-8"

NORTH



EAST ELEVATION  
SCALE: 3/16"=1'-0"



SOUTH ELEVATION  
SCALE: 3/16"=1'-0"

PROPOSED REMODELING TO  
2134 N TERRACE AVE  
MILWAUKEE, WI



WEST ELEVATION  
SCALE: 3/16"=1'-0"



NORTH ELEVATION  
SCALE: 3/16"=1'-0"

PROPOSED REMODELING TO  
2134 N TERRACE AVE  
MILWAUKEE, WI