

EXHIBIT A

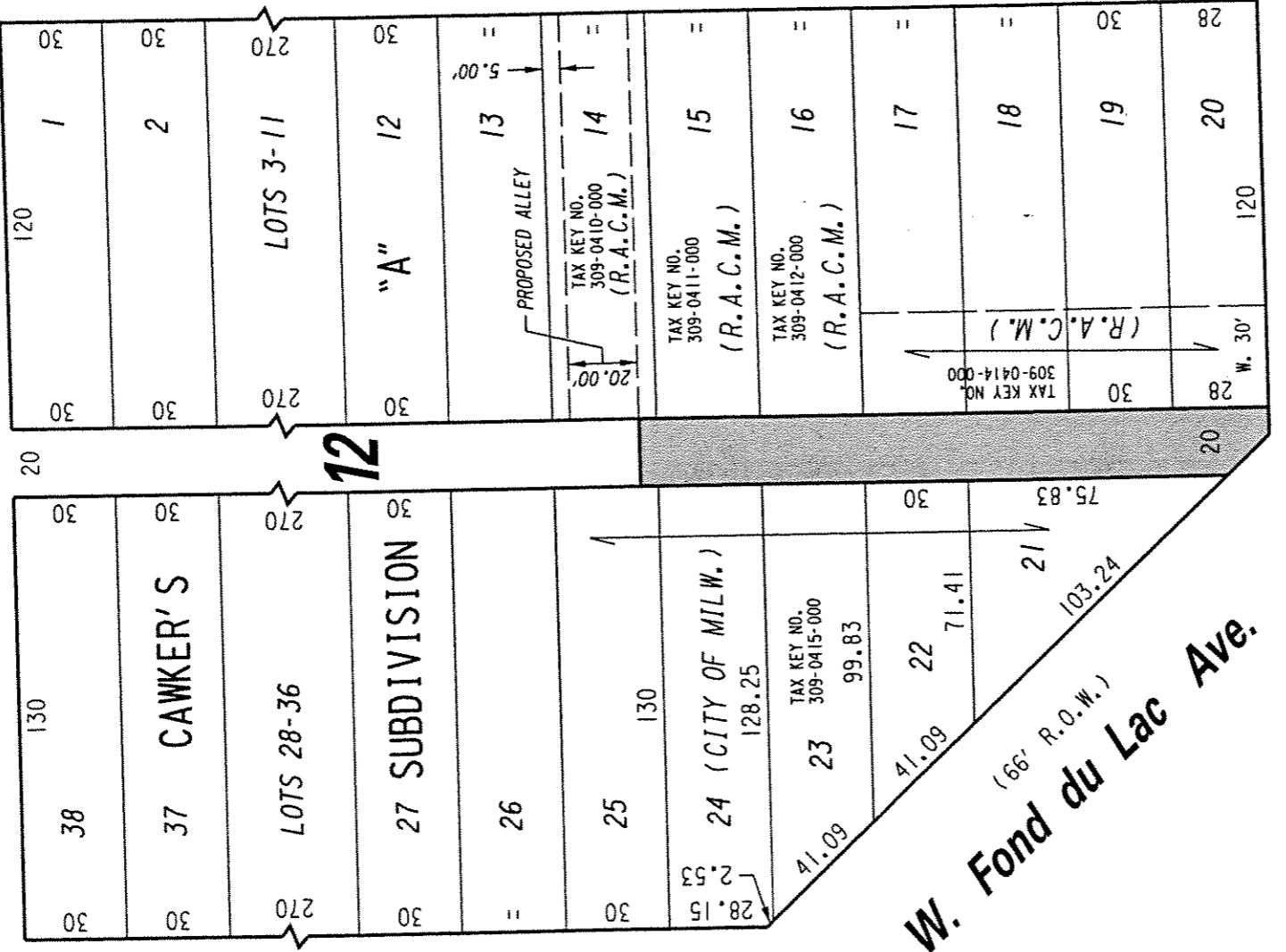
309

N.E. 1/4 SEC. 13, T.7N., R.21E.

W. Hadley St.

(60' R.O.W.)

St.



33

30

1

120

30

30

20

30

38

30

30

St.

(60' R.O.W.)

N. 28th

SEC. LINE

(66' R.O.W.)

N. 27th

33

35

35

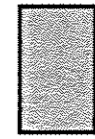
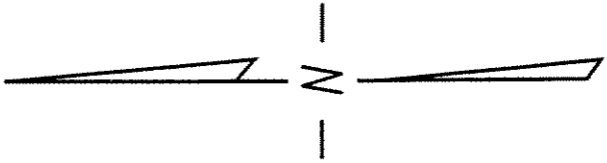
35

1/4 SEC. LINE

(R.O.W. VARIES)

St.

W. Center



PORTION OF PUBLIC ALLEY PROPOSED TO BE VACATED

REVISED: 9-23-2004

VACATION LIMITS REVISED

FILE NO. 000668

INFRASTRUCTURE SERVICES DIVISION

MILWAUKEE, WISCONSIN

ASSIGNED TO: W.E. FUCHS

CH'K'D. BY: W.E. FUCHS

DRAWN BY: W.E.F.

DATE: SEPT. 7, 2004

PROJECT/GRANT NO.: WK52337105

SCALE: 1" = 50'

APPROVED BY:

Maureen Lindholm
 CENTRAL DRAFTING & RECORDS MANAGER
 CIVIL ENGINEER